

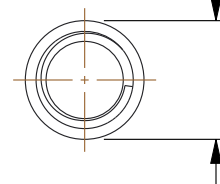
Ø0.247
Small
End
Dia.



2.000
Length

1/4-28
0.312
0.406

Ø0.290
0.288
Large
End
Dia.



NOTES:

1. TYPE : External Threaded with Nut
2. SIZE : #5 x 2
3. MATERIAL : Free Cutting Steel
4. FINISH : Plain
5. INCLUDES : Nut

COMPONENT

Taper Pin

GRAINGER
//

100 Grainger Parkway, Lake Forest, Illinois 60045-5201
1-(800) GRAINGER, 1-(800) 472-4643, (847) 535-1000
www.grainger.com

This file and any associated information and specifications are provided for reference and evaluation purposes only, and is subject to change without notice. Grainger makes no representations, warranties or guarantees as to the appropriateness, accuracy, completeness, or suitability for any purpose, of the file, information or specifications. You are solely responsible for the use of the file, information or specifications.

This drawing is the property of GRAINGER. It contains confidential, proprietary information that is GRAINGER property. Do not disclose to or duplicate for others except as authorized by GRAINGER.

SCALE

2.14

41LM72

Taper Pin, Threaded, Steel, #5 x 2, PK5

UNIT

INCH

SHEET

1 of 1