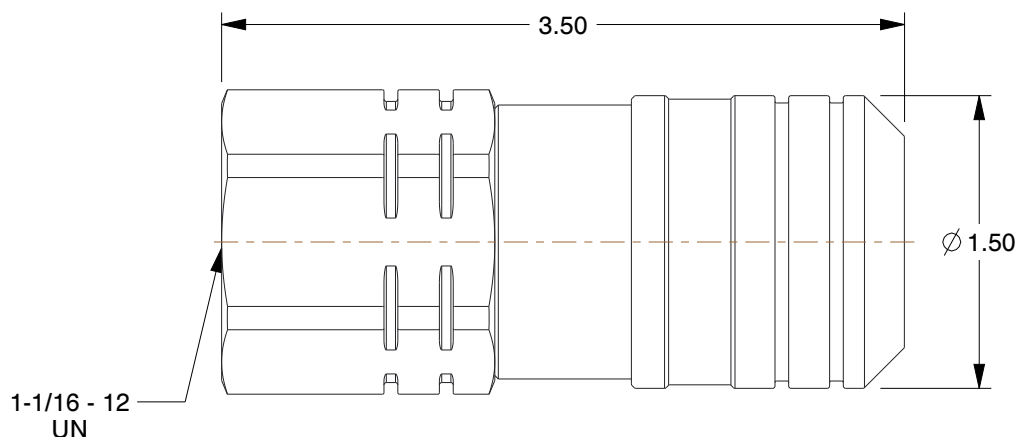
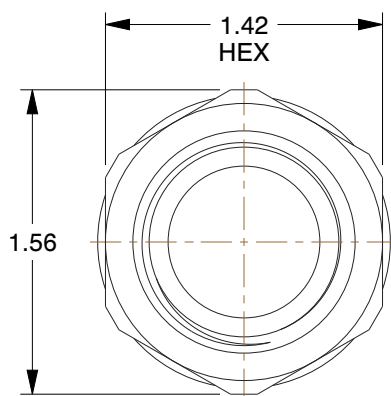




Series	FF	Max. Pressure	5075 psi
Shut Off	Flat Face	Sleeve Material	Zinc Plated Steel
Standards	ISO 16028	Connection Type	FSAE
Seal Material	Buna	Coupler Flow Rate	3.8 gpm
Valve Design	Tubular	Locking Mechanism	Standard Sleeve Lock
Bearing Material	Stainless Steel	Coupler Thread Size	1-1/16"-12



NOTES:

1. SEAL TYPE: Buna N
2. COUPLER BODY SIZE: 1/2"
3. ITEM: Hydraulic Coupler Body
4. COUPLER FINISH: Clear Chromate
5. PARKER INTERCHANGE: FEM501-12FO
6. COUPLER INTERCHANGE TYPE: HTMA
7. OPERATING TEMP. RANGE: -4° to 212°F
8. COUPLER BODY MATERIAL: Zinc Plated Steel
9. QUICK COUPLER TYPE: Hydraulic Coupler Body
10. FOR USE WITH: Mfr. No. 12FFP50, 12FFP75UN, 12FFP87UN

COMPONENT	Hydraulic Quick Couplers
-----------	--------------------------

GRAINGER

100 Grainger Parkway, Lake Forest, Illinois 60045-5201
 1-(800) GRAINGER, 1-(800) 472-4643, (847) 535-1000
www.grainger.com

This file and any associated information and specifications are provided for reference and evaluation purposes only, and is subject to change without notice. Grainger makes no representations, warranties or guarantees as to the appropriateness, accuracy, completeness, or suitability for any purpose, of the file, information or specifications. You are solely responsible for the use of the file, information or specifications.

This drawing is the property of GRAINGER. It contains confidential, proprietary information that is GRAINGER property. Do not disclose to or duplicate for others except as authorized by GRAINGER.

SCALE 1.02

33M276

Body, 1-1/16-12, 1/2 In. Body, Steel

UNIT

INCH

SHEET

1 of 1