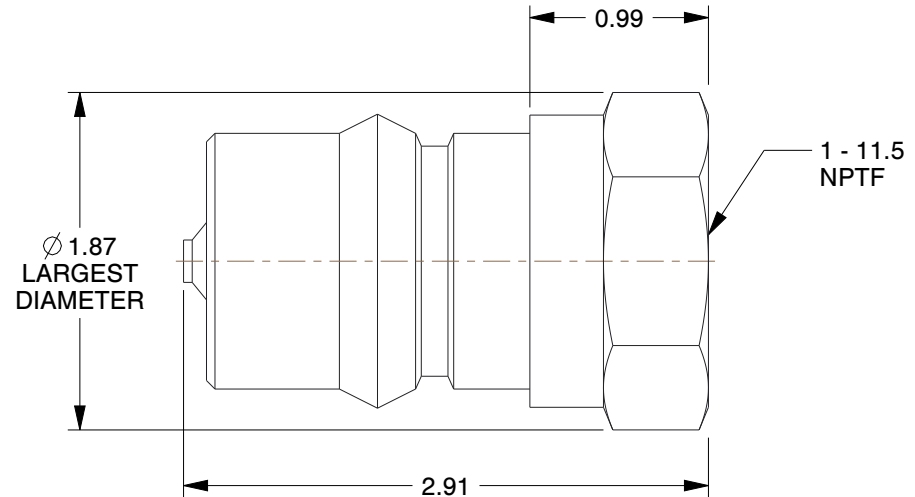
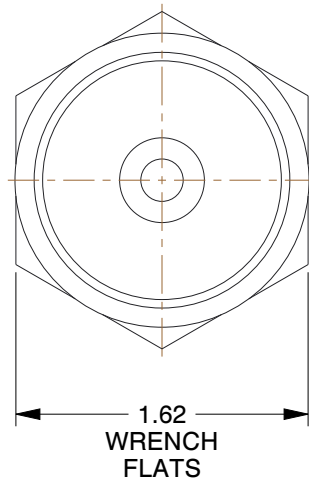




Series	Parker 60 Series	Coupler Body Size	1"
Valve Design	Poppet	Coupler Flow Rate	50.0 gpm
Seal Material	Buna	Locking Mechanism	Ball
Max. Pressure	2000 psi	Coupler Thread Size	1"-11-1/2
Coupler Finish	Zinc Plated	Coupler Body Material	Steel
Connection Type	FNPT	Quick Coupler Type	Hydraulic Coupler Nipple



NOTES:

1. SHUT OFF: Double
2. ITEM: Hydraulic Coupler Nipple
3. STANDARDS: ISO 7241-1 Series B
4. PARKER INTERCHANGE: H8-63
5. BEARING MATERIAL: Stainless Steel
6. OPERATING TEMP. RANGE: -40° to 250°F
7. FOR USE WITH: ISO 7241-1 Series B Coupler
8. COUPLER INTERCHANGE TYPE: ISO 7241-1 Series B
9. INCLUDES: Valve Actuator, Heavy Duty Steel Nipples, Steam

COMPONENT	Hydraulic Quick Couplers		
31A895	Coupler Nipple, 1-11-1/2, 1 In. Body, Steel		
	UNIT		
	INCH		
	SHEET		
1 of 1			

GRAINGER
■■■■■

100 Grainger Parkway, Lake Forest, Illinois 60045-5201
1-(800) GRAINGER, 1-(800) 472-4643, (847) 535-1000
www.grainger.com

This file and any associated information and specifications are provided for reference and evaluation purposes only, and is subject to change without notice. Grainger makes no representations, warranties or guarantees as to the appropriateness, accuracy, completeness, or suitability for any purpose, of the file, information or specifications. You are solely responsible for the use of the file, information or specifications.

This drawing is the property of GRAINGER. It contains confidential, proprietary information that is GRAINGER property. Do not disclose to or duplicate for others except as authorized by GRAINGER.

SCALE 0.94