

# NY SERIES - Nylon Wheels

- |                    |   |   |
|--------------------|---|---|
| Wheel Type:        | Nylon                                   | • Crowned tread for ease of movement  |
| Standard Finish:   | White                                   | • Virtually non-marking; cause little floor damage                                |
| Temperature Range: | -4°F to 176°F (41°F to 104°F preferred) | • Resistant to oils, fats, alkalis, soaps and detergents                          |
| Durometer:         | 80° - 85° Shore D                       | • Ideal for steam cleaning or wash-down applications (e.g. poultry, meat packing) |

**Wheel Characteristics:**

- Water-treated after molding until natural absorption reaches that of normal atmospheric humidity to obtain maximum toughness
- Clean and lightweight with high load capacities
- Minimum lubrication required

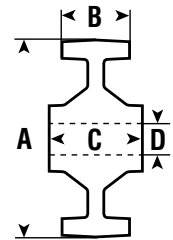
Nylon wheels should not be used in contact with concentrated acids, although some exposure to diluted acids is possible. Where extreme conditions are involved, tests should be conducted to establish the best choice of wheel.



A = Wheel Diameter    B = Tread Width    C = Hub Length    D = Bore

**NY SERIES**

A	B	C	D	Load Capacity	Bearing Type	Wheel Weight	Wheel Part #	Used in Caster Series
1-5/8"	11/16"	3/4"	5/16"	40	Plain	.035	040 NY01	1
2"	11/16"	3/4"	5/16"	110	Plain	.055	050 NY01	1
2"	3/4"	15/16"	5/16"	120	Plain	.06	050 NY02	2
2"	9/16"	11/16"	1/2"	176	Plain	.06	050 NY0L	2SL
2-1/2"	11/16"	3/4"	5/16"	110	Plain	.066	063 NY01	1
2-1/2"	1"	1-3/16"	10mm	260	Plain	.11	063 NY03	3
2-9/16"	1-3/8"	1-11/16"	12mm	715	Roller	.44	065 NY1L	Inverted
2-9/16"	1-3/8"	1-11/16"	12mm	715	Precision Ball	.44	065 NY2L	Inverted
3"	3/4"	15/16"	3/8"	130	Plain	.20	075 NY02	2
3"	1"	1-3/16"	10mm	350	Plain	.15	075 NY03	3
3"	1-3/8"	1-3/4"	12mm*	350	Plain	.15	075 NY04	4
3"	1-3/8"	1-3/4"	12mm*	350	Roller	.16	075 NY14	4
4"	3/4"	15/16"	3/8"	165	Plain	.16	100 NY02	2
4"	1"	1-3/16"	10mm	295	Plain	.30	100 NY03	3
4"	1 3/8"	1-3/4"	12mm*	495	Plain	.30	100 NY04	4, E
4"	1-3/8"	1-3/4"	12mm*	495	Roller	.41	100 NY14	4, E
4"	1-3/8"	2-3/8"	20mm	495	Plain	.52	100 NY0G	G, H, K
5"	1"	1-3/16"	12mm*	295	Plain	.65	125 NY03	3
5"	1-3/8"	1-3/4"	12mm*	595	Plain	.47	125 NY04	4, E
5"	1-3/8"	1-3/4"	12mm*	595	Roller	.55	125 NY14	4, E
5"	1-9/16"	2-3/8"	20mm	725	Plain	1.76	125 NY0G	G, H, K
5"	1-9/16"	2-3/8"	20mm	725	Roller	2.09	125 NY1G	G, H, K
6"	1-3/4"	2-3/8"	20mm**	1100	Plain	.80	150 NY05	5, G, H, K
6"	1-9/16"	2-3/8"	20mm**	1100	Roller	1.35	150 NY15	5, G, H, K
6"	2"	2-3/8"	20mm**	1760	Precision Ball	2.64	150 NY2H	G, H, K
6"	1-9/16"	2-3/8"	1"	1100	Roller	3.30	150 NYRA	
8"	2"	2-3/8"	20mm**	1100	Plain	1.45	200 NY05	5, G, H, K
8"	2"	2-3/8"	20mm**	2200	Plain	1.45	200 NY0E	
8"	2"	2-3/8"	20mm**	1100	Roller	2.20	200 NY15	5, G, H, K
8"	2"	2-3/8"	25mm	3300	Precision Ball	4.18	200 NY2H	G, H, K
8"	2"	2-3/8"	1"	1100	Roller	4.40	200 NYRA	
10"	2-3/8"	2-3/8"	25mm	4400	Precision Ball	5.06	250 NY2H	H



\*Available in 3/8" bore. Please consult factory.

\*\*Available in 1/2" bore. Please consult factory.