

## ***SUPER-GRIP™ Cable Ties & Cable Tie Mounts***

*Now More  
Sizes & Styles*



### **Innovative Solution for Bundling Wire and Cable**

*SUPER-GRIP™* Cable Ties and Mounts are designed to withstand rough installation practices that occur in MRO and construction projects. *SUPER-GRIP™* Cable Ties provide superior bundle tightness, excellent tensile strength, and flexibility. *SUPER-GRIP™* Cable Ties resist lateral movement on the bundle because they are more flexible and can be installed tighter. *SUPER-GRIP™* Cable Tie Mounts are available in a wide variety of styles to maximize application flexibility. The *SUPER-GRIP™* product line expands the *PANDUIT* cable tie and accessory offering, the most comprehensive bundling solution available.

### ***Cable Ties Key Features***

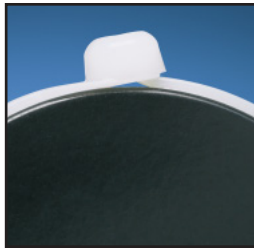
### ***Benefits***

|                                        |                                                                                                                                   |
|----------------------------------------|-----------------------------------------------------------------------------------------------------------------------------------|
| <b><i>High grip strength</i></b>       | Grips the bundle tightly, preventing ties from moving laterally along the length of the bundle                                    |
| <b><i>Thin, wide strap body</i></b>    | Improves tie flexibility while maintaining loop tensile strength, allowing cable tie to easily conform to irregular bundle shapes |
| <b><i>Distinctive flared neck</i></b>  | Offers improved strength and results in excellent small bundle performance                                                        |
| <b><i>Strong wedge and hinge</i></b>   | Improves tensile strength and enables the tie to withstand rough installation practices                                           |
| <b><i>Tapered tip</i></b>              | Threads easily into head for faster installation                                                                                  |
| <b><i>Aggressive tip grips</i></b>     | Allows temporary threading of tie, which permits positioning of tie prior to locking                                              |
| <b><i>Relief on bottom of head</i></b> | Reduces installed head height and minimizes gap between the head and bundle                                                       |

### ***Cable Tie Mounts Key Features***

### ***Benefits***

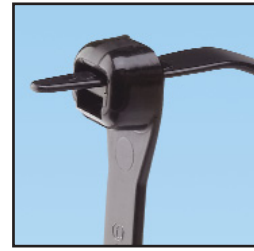
|                                      |                                                                                                                    |
|--------------------------------------|--------------------------------------------------------------------------------------------------------------------|
| <b><i>Low profile design</i></b>     | Positions bundle closer to mounting surface to conserve space; reduces standoff height of cable bundle             |
| <b><i>Stronger bridge design</i></b> | Withstands rough installation practices beyond that of conventional designs; supports increased installation force |



Low Installed Head Height



Flared Neck



Tapered Tip with Aggressive Grips

## Ordering Information

### Cable Ties

| Cable Ties Part Number |              | Material                    | Length In. (mm) | Width In. (mm) | Thickness In. (mm) | Max. Bundle Diameter In. (mm) | Min. Loop Tensile Strength Lbs. (N) | Recommended Tools                                      | Packaging                          |                |                |                |
|------------------------|--------------|-----------------------------|-----------------|----------------|--------------------|-------------------------------|-------------------------------------|--------------------------------------------------------|------------------------------------|----------------|----------------|----------------|
| Standard               | Bulk         |                             |                 |                |                    |                               |                                     |                                                        | Std. Pkg. Qty.                     | Std. Ctn. Qty. | Bulk Pkg. Qty. | Bulk Ctn. Qty. |
| SG100M-C               | SG100M-M     | Nylon 6.6                   | 4.2 (106)       | .118 (3.0)     | .038 (1.0)         | 1.00 (25)                     | 18 (80)                             | GTS, GTSL, GS2B, PTS, PPTS, STS2                       | 100                                | 1000           | 1000           | 50000          |
| SG100M-C0              | SG100M-M0    | Weather Resistant Nylon 6.6 | 4.2 (106)       | .118 (3.0)     | .038 (1.0)         | 1.00 (25)                     | 18 (80)                             |                                                        | 100                                | 1000           | 1000           | 50000          |
| SG150I-C               | SG150I-M     | Nylon 6.6                   | 6.2 (157)       | .168 (4.3)     | .040 (1.0)         | 1.50 (38)                     | 40 (178)                            | GTS, GTSL, GS2B, PTS, PPTS, STS2                       | 100                                | 1000           | 1000           | 25000          |
| SG150I-C0              | SG150I-M0    | Weather Resistant Nylon 6.6 | 6.2 (157)       | .168 (4.3)     | .040 (1.0)         | 1.50 (38)                     | 40 (178)                            |                                                        | 100                                | 1000           | 1000           | 25000          |
| SG200S-C               | SG200S-M     | Nylon 6.6                   | 8.3 (211)       | .225 (5.7)     | .046 (1.2)         | 2.00 (51)                     | 50 (222)                            | GTS, GTSL, GS2B, GTH, GS4H, PTS, PTH, PPTS, STS2, STH2 | 100                                | 1000           | 1000           | 10000          |
| SG200S-C0              | SG200S-M0    | Weather Resistant Nylon 6.6 | 8.3 (211)       | .225 (5.7)     | .046 (1.2)         | 2.00 (51)                     | 50 (222)                            |                                                        | 100                                | 1000           | 1000           | 10000          |
| —                      | SG200S-M30   | Heat Stabilized Nylon 6.6   | 8.3 (211)       | .225 (5.7)     | .046 (1.2)         | 2.00 (51)                     | 50 (222)                            |                                                        | —                                  | —              | 1000           | 10000          |
| SG250S-C               | —            | Nylon 6.6                   | 10.4 (264)      | .225 (5.7)     | .050 (1.3)         | 2.60 (66)                     | 70 (311)                            | GTS, GTSL, GS2B, GTH, GS4H, PTS, PTH, PPTS, STS2, STH2 | 100                                | 1000           | —              | —              |
| SG250S-C0              | —            | Weather Resistant Nylon 6.6 | 10.4 (264)      | .225 (5.7)     | .050 (1.3)         | 2.60 (66)                     | 70 (311)                            |                                                        | 100                                | 1000           | —              | —              |
| SG300S-C               | SG300S-M     | Nylon 6.6                   | 12.4 (315)      | .225 (5.7)     | .050 (1.3)         | 3.20 (81)                     | 70 (311)                            |                                                        | 100                                | 1000           | 1000           | 10000          |
| SG300S-C0              | SG300S-M0    | Weather Resistant Nylon 6.6 | 12.4 (315)      | .225 (5.7)     | .050 (1.3)         | 3.20 (81)                     | 70 (311)                            |                                                        | 100                                | 1000           | 1000           | 10000          |
| —                      | SG300S-M30   | Heat Stabilized Nylon 6.6   | 12.4 (315)      | .225 (5.7)     | .050 (1.3)         | 3.20 (81)                     | 70 (311)                            |                                                        | —                                  | —              | 1000           | 10000          |
| SG370S-C               | SG370S-M     | Nylon 6.6                   | 15.3 (389)      | .225 (5.7)     | .052 (1.3)         | 4.20 (107)                    | 70 (311)                            |                                                        | 100                                | 1000           | 1000           | 5000           |
| SG370S-C0              | SG370S-M0    | Weather Resistant Nylon 6.6 | 15.3 (389)      | .225 (5.7)     | .052 (1.3)         | 4.20 (107)                    | 70 (311)                            |                                                        | 100                                | 1000           | 1000           | 5000           |
| SG350LH-L              | SG350LH-TL   | Nylon 6.6                   | 15.3 (389)      | .330 (8.4)     | .064 (1.6)         | 4.13 (105)                    | 120 (534)                           |                                                        | GTH, GS4H, GS4EH, PTH, STH2, ST3EH | 50             | 500            | 250            |
| SG350LH-L0             | SG350LH-TL0  | Weather Resistant Nylon 6.6 | 15.3 (389)      | .330 (8.4)     | .064 (1.6)         | 4.13 (105)                    | 120 (534)                           | 50                                                     |                                    | 500            | 250            | 2500           |
| —                      | SG350LH-TL30 | Heat Stabilized Nylon 6.6   | 15.3 (389)      | .330 (8.4)     | .064 (1.6)         | 4.13 (105)                    | 120 (534)                           | —                                                      |                                    | —              | 250            | 2500           |
| SG450H-L               | SG450H-C     | Nylon 6.6                   | 18.6 (471)      | .380 (9.7)     | .068 (1.7)         | 5.20 (132)                    | 175 (778)                           | GTH, GS4H, GS4EH, PTH, STH2, ST3EH                     | 50                                 | 500            | 100            | 2000           |
| SG450H-L0              | SG450H-C0    | Weather Resistant Nylon 6.6 | 18.6 (471)      | .380 (9.7)     | .068 (1.7)         | 5.20 (132)                    | 175 (778)                           |                                                        | 50                                 | 500            | 100            | 2000           |

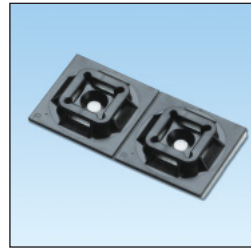
## SUPER-GRIP™ Cable Tie Mounts



SGABM20-A-C



SGABM25-A-C



SGABM25-AT-C0



SGTA1S8-C

### Adhesive Backed Mounts

| Part Number   | Material                    | Used With Cable Ties                                            | Length In. (mm) | Width In. (mm) | Mounting Method        | Std. Pkg. Qty. | Std. Ctn. Qty. |
|---------------|-----------------------------|-----------------------------------------------------------------|-----------------|----------------|------------------------|----------------|----------------|
| SGABM20-A-C   | Nylon 6.6                   | SG100M, SG150I                                                  | .75 (19.0)      | .75 (19.0)     | Rubber Based Adhesive  | 100            | 500            |
| SGABM20-AT-C0 | Weather Resistant Nylon 6.6 | SG100M, SG150I                                                  | .75 (19.0)      | .75 (19.0)     | Acrylic Based Adhesive | 100            | 500            |
| SGABM25-A-C   | Nylon 6.6                   | SG100M, SG150I, SG200S, SG250S, SG300S, SG370S                  | 1.00 (25.4)     | 1.00 (25.4)    | Rubber Based Adhesive  | 100            | 1000           |
| SGABM25-AT-C0 | Weather Resistant Nylon 6.6 | SG100M, SG150I, SG200S, SG250S, SG300S, SG370S                  | 1.00 (25.4)     | 1.00 (25.4)    | Acrylic Based Adhesive | 100            | 1000           |
| SGABM25-S6-C  | Nylon 6.6                   | SG100M, SG150I, SG200S, SG250S, SG300S, SG370S                  | 1.00 (25.4)     | 1.00 (25.4)    | #6 (M3) Screw          | 100            | 1000           |
| SGABM25-S6-C0 | Weather Resistant Nylon 6.6 | SG100M, SG150I, SG200S, SG250S, SG300S, SG370S                  | 1.00 (25.4)     | 1.00 (25.4)    | #6 (M3) Screw          | 100            | 1000           |
| SGABM30-A-C   | Nylon 6.6                   | SG100M, SG150I, SG200S, SG250S, SG300S, SG370S                  | 1.12 (28.5)     | 1.12 (28.5)    | Rubber Based Adhesive  | 100            | 500            |
| SGABM30-AT-C0 | Weather Resistant Nylon 6.6 | SG100M, SG150I, SG200S, SG250S, SG300S, SG370S                  | 1.12 (28.5)     | 1.12 (28.5)    | Acrylic Based Adhesive | 100            | 500            |
| SGABM40-A-L   | Nylon 6.6                   | SG100M, SG150I, SG200S, SG250S, SG300S, SG370S, SG350LH, SG450H | 1.50 (38.1)     | 1.50 (38.1)    | Rubber Based Adhesive  | 100            | 500            |
| SGABM40-AT-L0 | Weather Resistant Nylon 6.6 | SG100M, SG150I, SG200S, SG250S, SG300S, SG370S, SG350LH, SG450H | 1.50 (38.1)     | 1.50 (38.1)    | Acrylic Based Adhesive | 100            | 500            |
| SGABM50-A-L   | Nylon 6.6                   | SG100M, SG150I, SG200S, SG250S, SG300S, SG370S, SG350LH, SG450H | 2.00 (50.8)     | 2.00 (50.8)    | Rubber Based Adhesive  | 100            | 500            |
| SGABM50-AT-L0 | Weather Resistant Nylon 6.6 | SG100M, SG150I, SG200S, SG250S, SG300S, SG370S, SG350LH, SG450H | 2.00 (50.8)     | 2.00 (50.8)    | Acrylic Based Adhesive | 100            | 500            |

### Screw Applied Tie Anchor Mounts

| Part Number | Material                    | Used With Cable Ties                           | Length In. (mm) | Width In. (mm) | Mounting Method | Std. Pkg. Qty. | Std. Ctn. Qty. |
|-------------|-----------------------------|------------------------------------------------|-----------------|----------------|-----------------|----------------|----------------|
| SGTA1S8-C   | Nylon 6.6                   | SG100M, SG150I, SG200S, SG250S, SG300S, SG370S | .80 (20.3)      | .37 (9.4)      | #8 (M4) Screw   | 100            | 500            |
| SGTA1S8-C0  | Weather Resistant Nylon 6.6 | SG100M, SG150I, SG200S, SG250S, SG300S, SG370S | .80 (20.3)      | .37 (9.4)      | #8 (M4) Screw   | 100            | 500            |



**SGMPM**



**SGTM2S8-C**

**Masonry Push Mounts**

| Part Number  | Material                                    | Used With Cable Ties                                            | Grip Length In. (mm) | Hole Diameter In. (mm) | Mounting Method | Std. Pkg. Qty. | Std. Ctn. Qty. |
|--------------|---------------------------------------------|-----------------------------------------------------------------|----------------------|------------------------|-----------------|----------------|----------------|
| SGMPMS19-C0  | Impact Modified Weather Resistant Nylon 6.6 | SG100M, SG150I, SG200S, SG250S, SG300S, SG370S                  | .97 (24.6)           | .187 (4.7)             | Tree Barb       | 100            | 500            |
| SGMPMS25-C0  |                                             | SG100M, SG150I, SG200S, SG250S, SG300S, SG370S                  | .97 (24.6)           | .250 (6.4)             |                 | 100            | 500            |
| SGMPMH38-L0  |                                             | SG100M, SG150I, SG200S, SG250S, SG300S, SG370S, SG350LH, SG450H | 1.25 (31.8)          | .375 (9.5)             |                 | 50             | 500            |
| SGMPMWH32-L0 |                                             | SG100M, SG150I, SG200S, SG250S, SG300S, SG370S, SG350LH, SG450H | 1.41 (35.8)          | .315 (8.0)             |                 | 50             | 500            |

**Screw Applied Tie Mounts**

| Part Number | Material                    | Used With Cable Ties                                    | Length In. (mm) | Width In. (mm) | Mounting Method | Std. Pkg. Qty. | Std. Ctn. Qty. |
|-------------|-----------------------------|---------------------------------------------------------|-----------------|----------------|-----------------|----------------|----------------|
| SGTM1S6-C   | Nylon 6.6                   | SG100M                                                  | .51 (13.0)      | .37 (9.4)      | #6 (M3) Screw   | 100            | 500            |
| SGTM1S6-C0  | Weather Resistant Nylon 6.6 | SG100M                                                  | .51 (13.0)      | .37 (9.4)      | #6 (M3) Screw   | 100            | 500            |
| SGTM2S8-C   | Nylon 6.6                   | SG100M, SG150I, SG200S, SG250S, SG300S, SG370S          | .66 (16.7)      | .48 (12.2)     | #8 (M4) Screw   | 100            | 500            |
| SGTM2S8-C0  | Weather Resistant Nylon 6.6 | SG100M, SG150I, SG200S, SG250S, SG300S, SG370S          | .66 (16.7)      | .48 (12.2)     | #8 (M4) Screw   | 100            | 500            |
| SGTM3S10-C  | Nylon 6.6                   | SG100M, SG150I, SG200S, SG250S, SG300S, SG370S, SG350LH | .91 (23.1)      | .61 (15.4)     | #10 (M5) Screw  | 100            | 500            |
| SGTM3S10-C0 | Weather Resistant Nylon 6.6 | SG100M, SG150I, SG200S, SG250S, SG300S, SG370S, SG350LH | .91 (23.1)      | .61 (15.4)     | #10 (M5) Screw  | 100            | 500            |