

74 12 160

High Leverage Diagonal Cutter



- for very tough, continuous use
- high cutting performance with minimum effort due to optimum co-ordination of the cutting edge angle and transmission ratio
- precision cutting edges additionally induction hardened (cutting edge hardness approx. 64 HRC), for all sorts of wire including piano wire
- Chrome vanadium heavy-duty steel, forged, oil-hardened
 - Style: with opening spring; to be activated if required

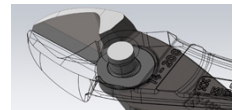
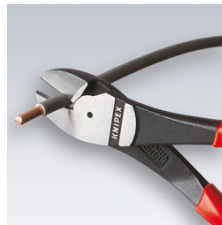


20 % less effort required

compared to conventional diagonal cutters of the same length.

With integrated forged joint axle.

Article No.	74 12 160
EAN	4003773065111
Pliers	black atramentized
Head	polished
Handles	with multi-component grips
Style	1
medium hard wire Ø mm	3,4
hard wire Ø mm	2,5
piano wire Ø mm	2,0
Length mm	160
Net weight g	209



With integrated forged joint axle for very tough, continuous use



74 12: just gentle sliding with your thumb will activate the opening spring



74 12: opening spring in deactivated position

technical change and errors excepted

