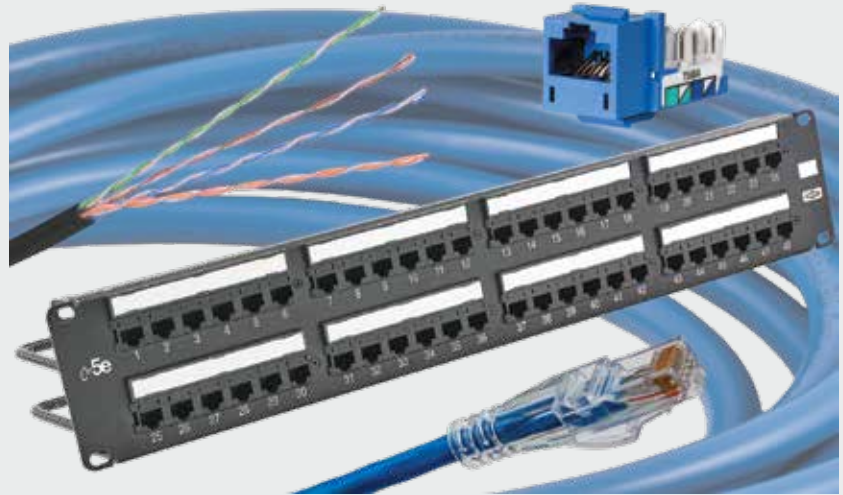


- Exceeds TIA Category 5e Component Compliant
- Quick-Lace Termination Geometry Provides Ample Thumb Room
- 2.5GBASE-T Ethernet Assurance
- Bulk Packaging Reduces Excess Waste on the Job



SPEEDGAIN® Category 5e is designed to support reliable 2.5 Gigabit Ethernet performance. The SPEEDGAIN system is available in a variety of colors, lengths and configurations for multiple applications.

5e



Features

- Guaranteed installed 4-conductor channel PSACR performance 6 dB above the Category 5e channel requirements on all SPEEDGAIN® Category 5e registered installations
- Channel bandwidth beyond 190 MHz
- SPEEDGAIN® Category 5e System delivers channel performance that exceeds all ISO/IEC 11801 and ANSI/TIA/EIA-568-B Category 5e performance requirements
- Independent third-party verification

Applications

- 2.5GBASE-T
- PoE++
- Broadband video
- Voice

Standards/Verifications

- Bit error rate tested ($\leq 1 \cdot 10^{-10}$)
- ANSI/TIA/EIA-568 Category 5e component, link and channel compliant
- Backward compatible Category 5e



Hubbell is a Solution Developer Partner within the Cisco Developer Network Program

Jacks, SPEEDGAIN® Category 5e



The HXJ5E jack supports up to 2.5GBASE-T applications with usable bandwidth of 190 MHz.

	Single Pack	24-Pack
	HXJ5Exx	HXJ5Exx24

xx = Color: **BK** (Black), **B** (Blue), **GL** (Gold), **GY** (Gray), **GN** (Green), **OR** (Orange), **P** (Purple), **R** (Red), **W** (White), **Y** (Yellow)
Note: Gold and Purple available in 24-pack only.

UTP Cable, Category 5e, 4-pair

Description	REELEX® Plenum Box	REELEX® Riser Box
SPEEDGAIN® Cat 5e	C5EPRPxx	C5EPRRxx
Cat 5e	C5ERPxx	C5ERRxx



xx = Color: **B** (Blue), **GY** (Gray), **GN** (Green), **OR** (Orange), **P** (Purple), **W** (White), **Y** (Yellow); Packaged in 1000 foot quantities

22 AWG Low Power Loss UTP Cable, Cat 5e, 4-pair

Description	Plenum Reel in Box	Riser Reel in Box
NEXTPOWER Cat 5e LP	C5ELPPxx	C5ELPRxx



xx = Color: **BK** (Black), **B** (Blue), **GY** (Gray), **GN** (Green), **OR** (Orange), **P** (Purple), **R** (Red), **W** (White), **Y** (Yellow); Packaged in 1000 foot quantities

110 Block Kit

Category 5e performance in a cost-effective 110 block system.



Description	Catalog No.
50-pair kit with 4-pair blocks	110BLK50FTK4
100-pair kit with 4-pair blocks	110BLK100FTK4
300-pair kit with 4-pair blocks	110BLK300FTK4

REELEX® is licensed and patented by Windings Inc.

Patch Panels, SPEEDGAIN® Category 5e



This universal panel is rugged, feature rich and provides performance that exceeds ANSI/TIA/EIA-568-B.2.

Ports	Height	Format	Color	Catalog No.
24	1.75"	Standard	Black	HP5E24*
48	3.50"	Standard	Black	HP5E48*
24	1.75"	Angled	Black	HP5E24A
48	3.50"	Angled	Black	HP5E48A

*Add **W** to Catalog Number for White

Patch Cords, SPEEDGAIN® Category 5e



Designed to guarantee application assurance, the HC5E Category 5e patch cords are center balanced with SPEEDGAIN® 5e patch panels and jacks to deliver positive PSACR to 190MHz with enhanced warranty protection.

Description	Catalog No.
Cat 6A patch cord	HC5Exxy

xx = Color: **BK** (Black), **B** (Blue), **GN** (Green), **GY** (Gray), **OR** (Orange), **PK** (Pink), **P** (Purple), **R** (Red), **W** (White), **Y** (Yellow).
yy = Length: **01** = 1', **03** = 3', **05** = 5', **07** = 7', **10** = 10', **15** = 15', **20** = 20', **25** = 25'

110 Patch Cords



Available with 110-to-110 or 110-to-RJ45 connectors, these patch cords provide modularity and quick termination to our 110 connecting blocks.

Length	110 to 110 Catalog No.	110 to RJ45 (T568B) Catalog No.
3'	-	PC119C5EL3
5'	-	PC119C5EL5
7'	PC110C5EL7	PC119C5EL7
9'	-	PC119C5EL9