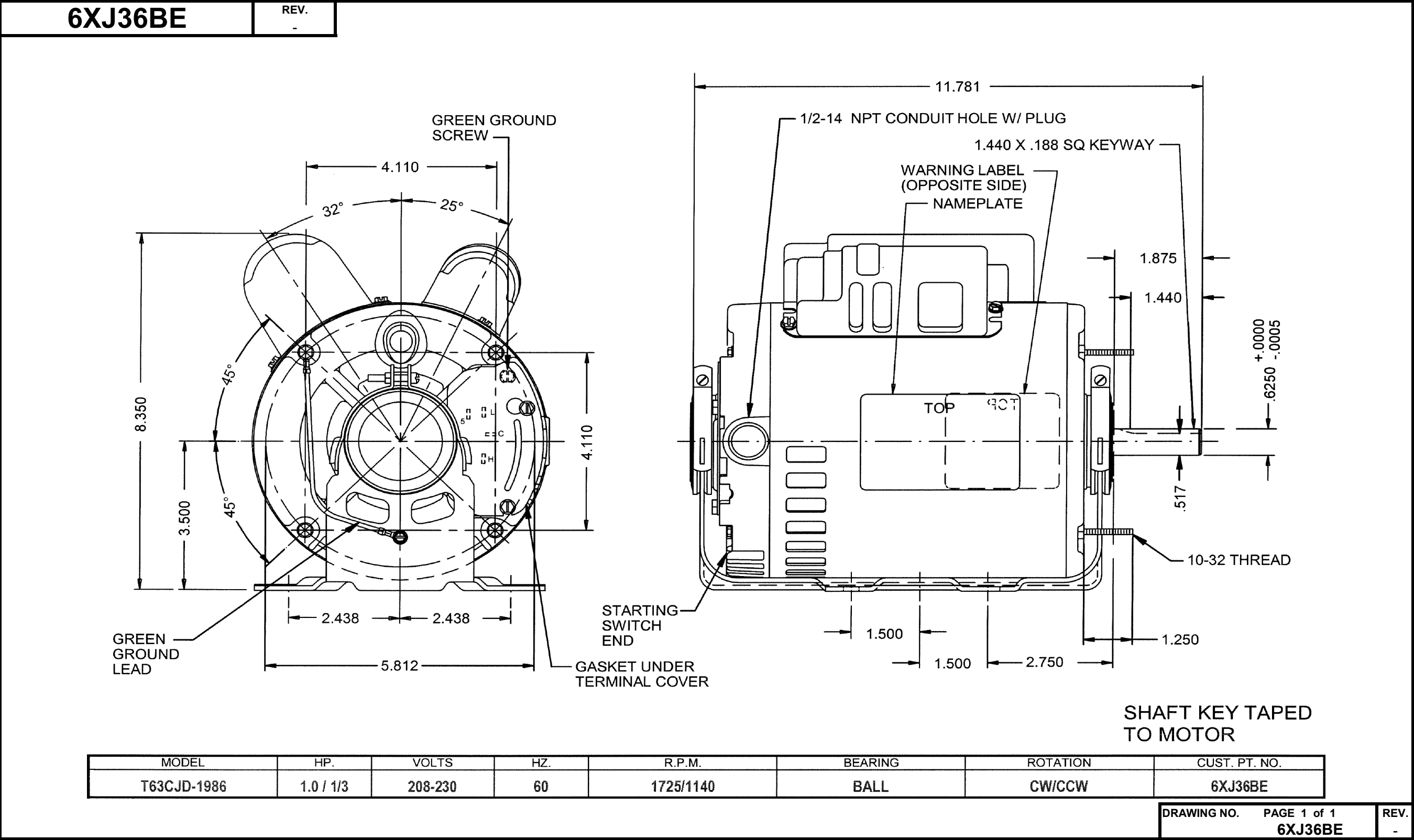


Dimensional Drawing



Dayton Electric Mfg. Co. Lake Forest, IL 60045 USA

Performance Data



6XJ36BE		REV. -						
MOTOR PERFORMANCE								
HP:	1							
Poles:	4							
No. of Speeds:	2							
Volts:	208-230	208	230					
HZ:	60	60	60					
Service Factor:	1.15							
Efficiency:	@ Rated Load	76.20	75.40					
Power Factor:	@ Rated Load	91.10	85.80					
Amps:	@ No Load	1.92	2.82					
	@ Rated Load	5.17	5.01					
	@ Service Factor	5.95	5.61					
	@ Locked Rotor	25.46	29.00					
RPM:	@ Rated Load	1733	1746					
Ambient (°C):		40						
Altitude (FASL):		-						
Torques:	Breakdown	93.1	115.8					
	Locked Rotor	62.47	79.79					
	Pull-Up	44.35	65.06					
	Rated Load	48.48	48.11					
	Service Factor	1.948	2.245					
Watts:	Rated Load	979	989					
KVA Code:		H						
Temperature Rise:	@ Rated Load	39.6	42					
	@ Service Factor	49.9	48.7					
Thermal Protector:	Trip Temp (°C)	-	-					
Winding Material:	Start (Auxiliary)	Cu						
	Run (Main)	Cu						
Capacitor(s):	Start (MFD / Volts)	208 uF/ 125 V						
	No. of Start Capacitors	1						
	Run (MFD / Volts)	25 uF/ 370 V						
	No. of Run Capacitors	1						
LOW SPEED PERFORMANCE DATA:								
HP:	1/3							
Poles:	6							
Volts:	208-230	208	230					
HZ:	60	60	60					
Efficiency:	@ Rated Load	57.60	55.60					
Power Factor:	@ Rated Load	59.90	53.40					
Amps:	@ No Load	2.82	3.22					
	@ Rated Load	3.46	3.63					
	@ Service Factor	3.69	3.79					
	@ Locked Rotor	-	-					
Torques:	Bead Down	50.6	63.3					
	Locked Rotor	-	-					
	Pull-Up	-	-					
	Rated Load	24.31	24.11					
	Service Factor	28.2	27.9					
Watts:	@ Rated Load	431	447					
Temperature Rise:	@ Rated Load	43.8	50.2					
	@ Service Factor	-	-					

Dayton Electric Mfg. Co. Lake Forest, IL 60045 USA

Performance Data



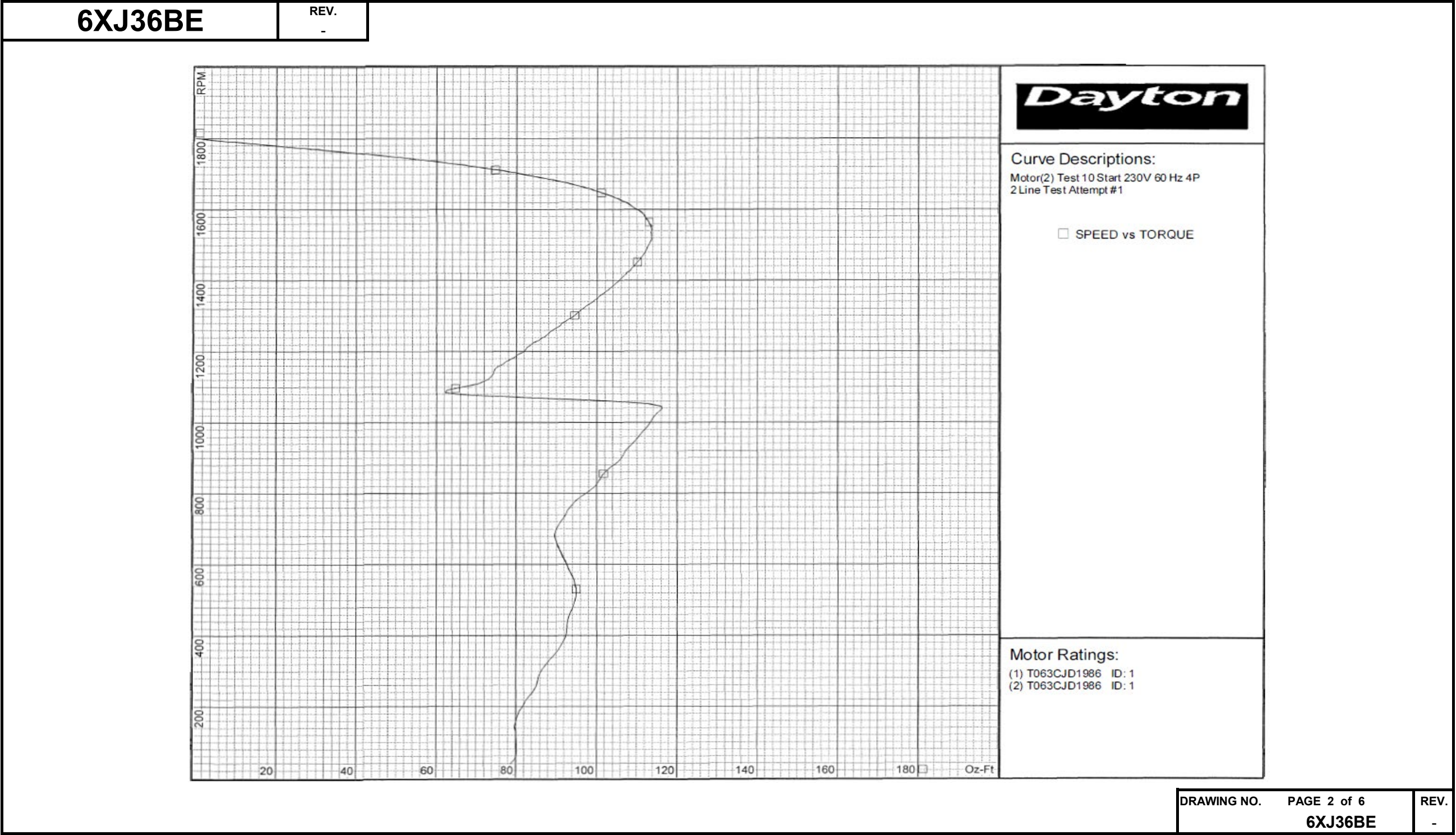
6XJ36BE		REV. -						
Dayton Manufacturing Company								
Motor Description				Test Conditions				
Model:	T063CJD1986			Test Type:	Start	Run Cap:	0	
Motor ID:	1			Test Number:	10	Start Cap:	0µfd	
Poles:	4/6			Poles:	4	Tested:	3/5/2012 12:52:17 PM	
Volts:	208-230			Volts:	230	Tested By:	Sharp, Gerald	
Frequency:	60			Hz:	60	Gear Ratio:	1:1	
HP:	1 - 1/3			Rotation:		Bearing Friction:	-0.59 Oz-Ft	
Speed:	1725/1140			Special Cond:	2 Line Test	Windage Torque:	-2.68 Oz-Ft	
Phase:	1			Speed Conn:				
Protector:	NONE			TestBoard:	Amps Performance	Fixture #3		
Special Points	Vline (V)	Iline (A)	Watts	RPM	Tq (Oz-ft)	HP	Eff (%)	PF (%)
	230.0	28.87	5114	7	79.50	0.007	0.1	77.0
	230.0	28.81	5100	38	78.64	0.036	0.5	77.0
	230.0	28.73	5104	186	80.79	0.179	2.6	77.2
	230.0	28.50	5091	343	89.23	0.364	5.3	77.7
	230.0	28.15	5034	483	94.16	0.542	8.0	77.8
	230.0	27.97	4968	609	92.25	0.668	10.0	77.2
	230.0	28.25	5045	723	91.22	0.785	11.6	77.7
	230.0	28.22	5128	829	100.20	0.989	14.4	79.0
	230.0	27.99	5158	926	107.66	1.187	17.2	80.1
	230.0	27.72	5172	1015	114.07	1.378	19.9	81.1
PUT OZ-FT	230.0	23.83	4049	1080	65.06	0.836	15.4	73.9
	230.0	23.34	3925	1084	62.20	0.803	15.3	73.1
	230.0	22.73	3898	1157	75.31	1.037	19.8	74.6
	230.0	21.87	3830	1230	85.35	1.250	24.3	76.1
	230.0	20.92	3736	1295	93.71	1.445	28.8	77.6
	230.0	19.92	3626	1355	100.54	1.622	33.4	79.2
	230.0	18.94	3512	1404	105.87	1.770	37.6	80.6
	230.0	17.85	3368	1452	110.09	1.903	42.2	82.1
	230.0	16.72	3211	1494	112.48	2.001	46.5	83.5
	230.0	15.59	3043	1532	113.51	2.070	50.7	84.9
	230.0	14.40	2850	1567	112.70	2.102	55.0	86.1
	230.0	13.24	2656	1598	110.42	2.100	59.0	87.2
	230.0	12.01	2438	1626	106.07	2.053	62.8	88.3
	230.0	10.80	2208	1651	100.08	1.967	66.4	88.9
	230.0	9.61	1975	1675	92.62	1.846	69.7	89.4
	230.0	8.34	1717	1697	82.46	1.666	72.4	89.5
	230.0	7.17	1464	1717	71.58	1.463	74.6	88.8
	230.0	5.91	1181	1738	57.58	1.191	75.3	86.9
	230.0	4.71	884	1758	41.55	0.869	73.4	81.6
28.3 OZ-FT	230.0	3.91	656	1771	28.30	0.597	67.8	73.0
	230.0	3.67	581	1775	23.82	0.503	64.6	68.7
0.33 HP	230.0	3.31	447	1784	15.54	0.330	55.1	58.6
	230.0	3.06	295	1794	5.83	0.124	31.4	41.9
	230.0	3.01	206	1800	0.00	0.000	0.0	29.6

DRAWING NO.	PAGE 1 of 6	REV.
6XJ36BE		-

DRAWING NO.	PAGE 1 of 6	REV.
6XJ36BE		-

Dayton Electric Mfg. Co. Lake Forest, IL 60045 USA

Performance Data



Dayton Electric Mfg. Co. Lake Forest, IL 60045 USA

Performance Data



6XJ36BE		REV. -											
Dayton Manufacturing Company													
Motor Description				Test Conditions									
Model: T063CJD1986		Test Type: Run		Run Cap: 0									
Motor ID: 1		Test Number: 4		Start Cap: 0µfd									
Poles: 4/6		Poles: 4											
Volts: 208-230		Volts: 230		Tested: 3/6/2012 8:14:53 AM									
Frequency: 60		Hz: 60		Tested By: Taylor, Melvin									
HP: 1 - 1/3		Rotation:		Gear Ratio: 1:1									
Speed: 1725/1140		Special Cond:		Bearing Friction: -0.59 Oz-Ft									
Phase: 1		Speed Conn:		Windage Torque: -2.14 Oz-Ft									
Protector: NONE		TestBoard:		Amtps Performance Fixture #3									
Special Points	Vline (V)	Vaux (V)	Vcap (V)	Iline (A)	Imain (A)	Iaux (A)	Watts	RPM	Tq (Oz-ft)	HP	Eff (%)	PF (%)	Cap
1 HP 48.7 OZ-FT	230.0	237.4	266.2	2.83	4.07	2.560	185	1790	0.00	0.000	0.0	28.4	25.5
	230.0	231.6	254.6	3.44	3.42	2.432	558	1772	23.25	0.490	65.5	70.5	25.3
	230.0	225.4	244.9	4.55	3.79	2.338	872	1753	41.49	0.866	74.0	83.4	25.3
	230.0	222.6	240.9	5.01	4.09	2.298	989	1746	48.11	1.000	75.4	85.8	25.3
	230.0	222.3	240.5	5.06	4.12	2.294	1000	1745	48.70	1.012	75.5	86.0	25.3
	230.0	218.8	235.9	5.58	4.52	2.248	1125	1735	55.32	1.143	75.8	87.6	25.3
	230.0	218.5	235.4	5.64	4.56	2.243	1138	1734	56.00	1.156	75.8	87.8	25.3
	230.0	215.1	230.7	6.18	5.02	2.198	1270	1725	62.93	1.292	75.9	89.3	25.3
	230.0	209.4	223.7	7.04	5.81	2.132	1458	1715	71.81	1.466	75.0	90.1	25.3
	230.0	200.4	212.0	8.36	7.13	2.025	1743	1691	84.62	1.704	72.9	90.7	25.3
56 OZ-FT 1725 RPM	230.0	189.7	199.7	9.79	8.62	1.913	2031	1667	95.70	1.899	69.8	90.2	25.4
	230.0	179.7	188.2	11.13	10.04	1.810	2288	1642	103.63	2.025	66.0	89.4	25.5
	230.0	169.8	177.4	12.40	11.38	1.715	2524	1614	109.52	2.105	62.2	88.5	25.6
	230.0	159.5	166.5	13.68	12.78	1.619	2749	1583	113.64	2.141	58.1	87.4	25.8
	230.0	149.5	156.3	14.90	14.10	1.527	2951	1551	115.18	2.126	53.7	86.1	25.9
	230.0	147.5	154.5	15.13	14.35	1.511	2988	1544	115.80	2.129	53.2	85.9	25.9
	230.0	139.8	147.1	16.03	15.34	1.443	3126	1515	115.35	2.081	49.7	84.8	26.0
	230.0	130.0	138.2	17.14	16.55	1.363	3290	1477	113.68	1.998	45.3	83.5	26.2
	230.0	120.7	130.5	18.17	17.68	1.292	3430	1436	110.75	1.893	41.2	82.1	26.3
	230.0	111.5	123.7	19.15	18.76	1.226	3553	1392	106.35	1.762	37.0	80.7	26.3
BDT OZ-FT	230.0	102.5	117.6	20.08	19.78	1.172	3659	1342	101.02	1.615	32.9	79.2	26.4
	230.0	94.1	112.7	20.92	20.73	1.124	3747	1290	94.54	1.452	28.9	77.9	26.5
	230.0	86.0	108.7	21.71	21.60	1.084	3825	1233	87.24	1.281	25.0	76.6	26.5
	230.0	78.4	105.6	22.43	22.41	1.054	3885	1172	79.31	1.106	21.2	75.3	26.5
	230.0	70.9	103.5	23.10	23.15	1.027	3936	1106	70.69	0.931	17.6	74.1	26.3
	230.0	63.8	102.2	23.72	23.86	1.011	3961	1034	60.99	0.751	14.1	72.6	26.3
	230.0	57.1	101.2	24.26	24.48	0.998	3989	957	50.94	0.580	10.9	71.5	26.2
	230.0	50.6	100.7	24.77	25.06	0.989	4002	874	39.77	0.414	7.7	70.2	26.1
	230.0	43.9	100.1	25.21	25.56	0.973	3993	785	28.00	0.262	4.9	68.9	25.8
	230.0	36.8	99.6	25.49	25.91	0.961	3968	690	17.64	0.145	2.7	67.7	25.6
	230.0	28.1	101.6	25.41	25.90	0.975	3907	592	21.12	0.149	2.8	66.9	25.4
	230.0	23.5	108.7	25.28	25.84	1.041	3945	489	34.54	0.201	3.8	67.8	25.4
	230.0	22.5	112.8	25.52	26.10	1.076	4005	377	30.92	0.139	2.6	68.2	25.3
	230.0	20.2	114.9	25.78	26.39	1.095	4040	252	20.61	0.062	1.1	68.2	25.3
	230.0	18.3	119.1	25.90	26.57	1.143	4048	118	12.52	0.018	0.3	68.0	25.5

DRAWING NO.

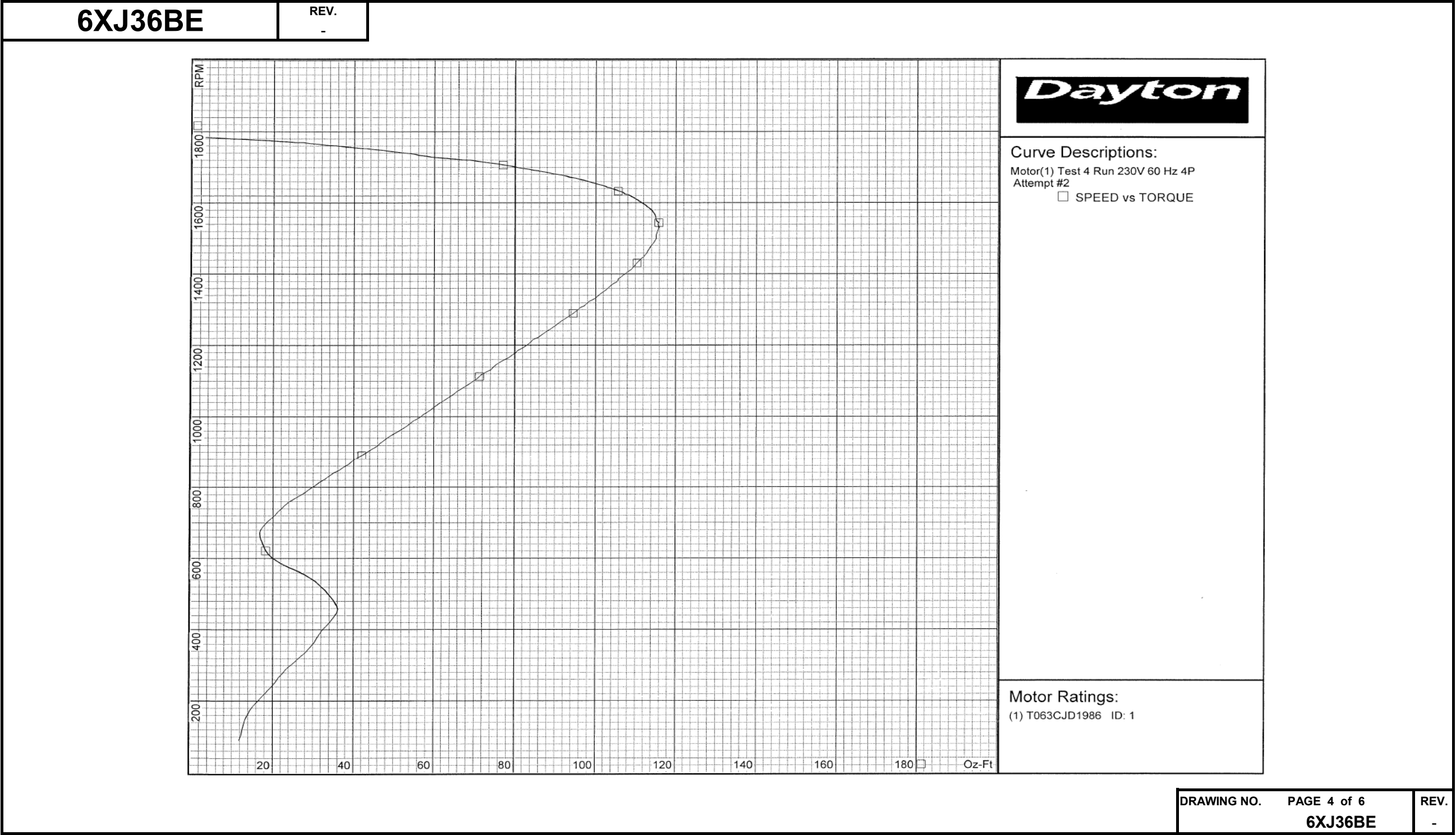
PAGE 3 of 6

6XJ36BE

REV.
-

Dayton Electric Mfg. Co. Lake Forest, IL 60045 USA

Performance Data



Dayton Electric Mfg. Co. Lake Forest, IL 60045 USA

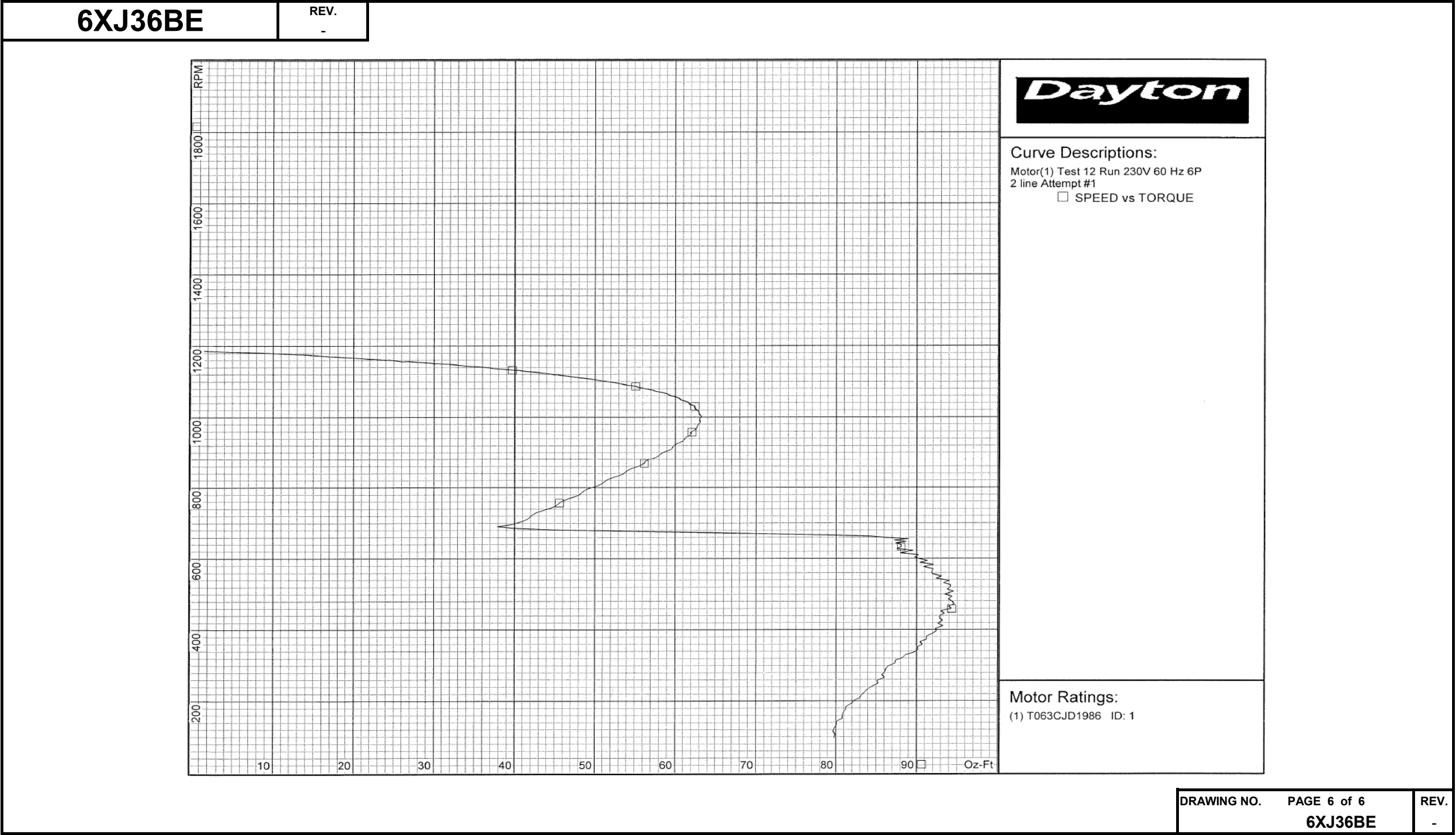
Performance Data



6XJ36BE		REV. -							
Dayton Manufacturing Company									
Motor Description				Test Conditions					
Model:		T063CJD1986		Test Type:		Run		Run Cap: 0	
Motor ID:		1		Test Number:		12		Start Cap: 0µfd	
Poles:		4/6		Poles:		6			
Volts:		208-230		Volts:		230		Tested: 3/5/2012 1:09:53 PM	
Frequency:		60		Hz:		60		Tested By: Sharp, Gerald	
HP:		1 - 1/3		Rotation:				Gear Ratio: 1:1	
Speed:		1725/1140		Special Cond:		2 line		Bearing Friction: -0.63 Oz-Ft	
Phase:		1		Speed Conn:				Windage Torque: -1.81 Oz-Ft	
Protector:		NONE		TestBoard:		Amps Performance			Fixture #3
Special Points		Vline (V)	Iline (A)	Watts	RPM	Tq (Oz-ft)	HP	Eff (%)	PF (%)
		230.0	3.18	159	1189	0.00	0.000	0.0	21.8
		230.0	3.29	305	1176	12.87	0.180	44.1	40.3
		230.0	3.56	421	1163	21.99	0.304	53.9	51.4
0.33 HP		230.0	3.63	444	1161	23.88	0.330	55.4	53.2
24.6 OZ-FT		230.0	3.65	454	1160	24.60	0.340	55.8	54.0
28.3 OZ-FT		230.0	3.80	505	1153	28.30	0.389	57.4	57.7
		230.0	3.89	533	1150	30.12	0.412	57.7	59.6
1140 RPM		230.0	4.20	621	1140	36.03	0.489	58.8	64.2
		230.0	4.30	646	1136	37.36	0.505	58.3	65.4
		230.0	4.74	759	1121	44.15	0.589	58.0	69.6
		230.0	5.24	872	1105	49.90	0.656	56.2	72.3
		230.0	5.73	977	1088	54.64	0.708	54.0	74.1
		230.0	6.23	1080	1070	58.06	0.740	51.1	75.4
		230.0	6.75	1178	1049	60.62	0.757	47.9	75.9
		230.0	7.24	1269	1028	62.36	0.763	44.8	76.2
		230.0	7.74	1355	1004	63.19	0.755	41.6	76.1
BDT OZ-FT		230.0	7.80	1366	1001	63.27	0.754	41.2	76.2
		230.0	8.22	1435	977	62.80	0.730	38.0	75.9
		230.0	8.68	1507	950	61.86	0.700	34.6	75.5
		230.0	9.12	1573	919	59.75	0.653	31.0	74.9
		230.0	9.54	1631	886	57.60	0.608	27.8	74.3
		230.0	9.93	1683	850	54.25	0.549	24.3	73.7
		230.0	10.30	1729	812	51.00	0.493	21.3	72.9
		230.0	10.64	1767	769	46.84	0.429	18.1	72.2
		230.0	10.95	1801	724	42.29	0.364	15.1	71.5
		230.0	20.97	3753	678	51.75	0.418	8.3	77.8
		230.0	27.76	4899	639	88.03	0.669	10.2	76.7
		230.0	28.01	4943	583	92.07	0.639	9.6	76.7
		230.0	28.03	4976	520	94.19	0.583	8.7	77.2
		230.0	28.19	5030	452	92.98	0.501	7.4	77.6
		230.0	28.35	5062	381	91.17	0.413	6.1	77.6
		230.0	28.49	5085	306	87.33	0.318	4.7	77.6
		230.0	28.58	5095	225	83.57	0.224	3.3	77.5
		230.0	28.61	5091	142	80.06	0.136	2.0	77.4
DRAWING NO.		PAGE 5 of 6		REV.					
6XJ36BE									

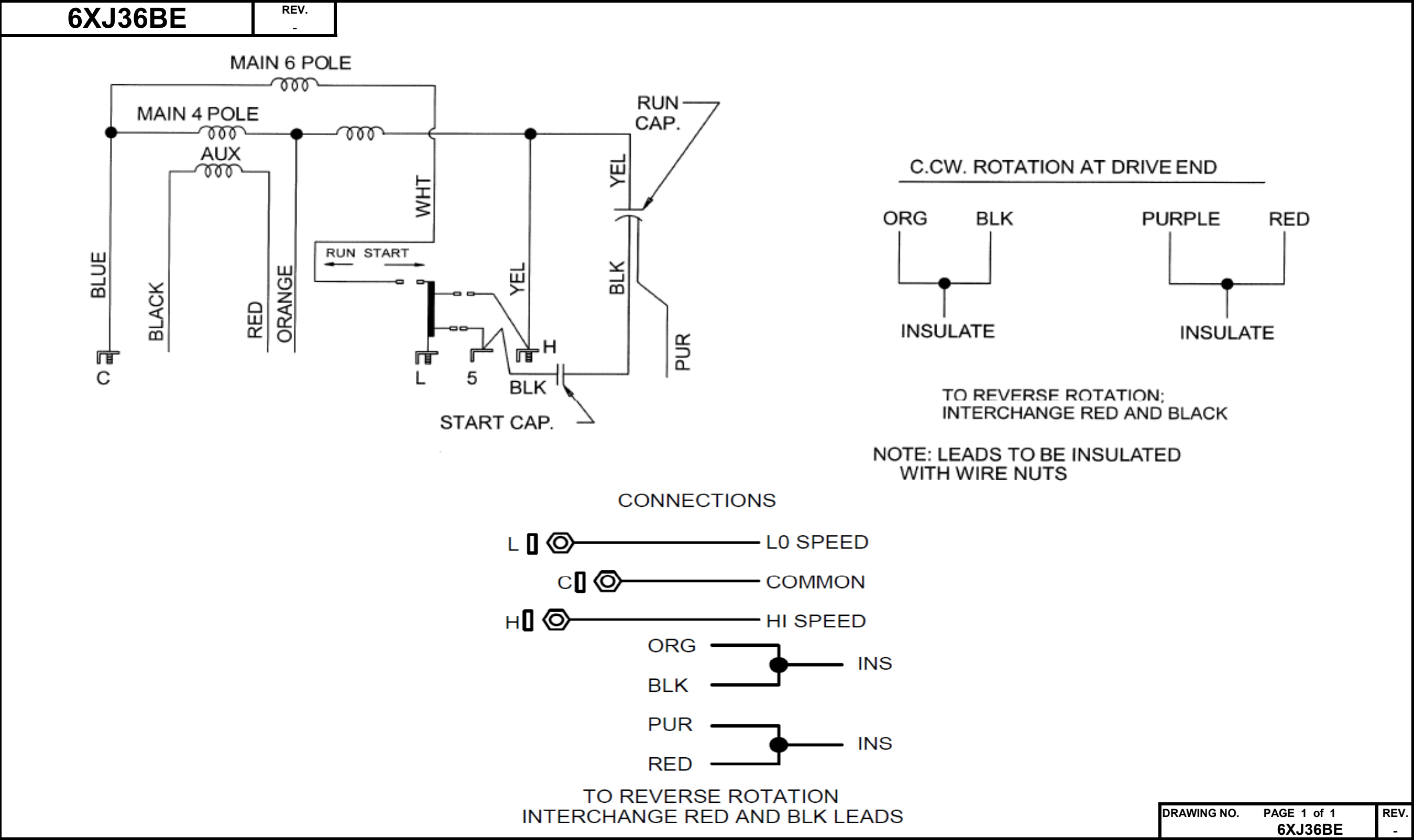
Dayton Electric Mfg. Co. Lake Forest, IL 60045 USA

Performance Data



Dayton Electric Mfg. Co. Lake Forest, IL 60045 USA

Wiring Diagram





Dayton[®]Part
No**6XJ36BE****INDUSTRIAL
MOTOR****HP:** 1.0 / 1/3**PH:** 1**VOLTS:** 208-230**HZ:** 60**AMPS:** 5.2-5.0/3.5**FR:** 56**RPM:** 1725/1140**INS CL:** B**DUTY:** CONT**AMB:** 40 °C**SF:** 1.15**SFA:** 5.9-5.6/3.7**KVA CODE :** H**ENCL:** ODP**MTR REF:** T63CJD-1986**THERMALLY PROTECTED:** NONEPROT. CODE ☐ ☐ MFG. NO. ☐ ☐

258501



E47479

**Disconnect Power Before Making
Any Electrical Connections or Changes****CONNECTIONS**L  ————— L0 SPEEDC  ————— COMMONH  ————— HI SPEEDORG  — INSBLK  — INSPUR  — INSRED  — INS**TO REVERSE ROTATION
INTERCHANGE RED AND BLK LEADS****Mfd for Dayton Electric Mfg. Co., Lake Forest, IL 60045 USA****Made in Mexico**