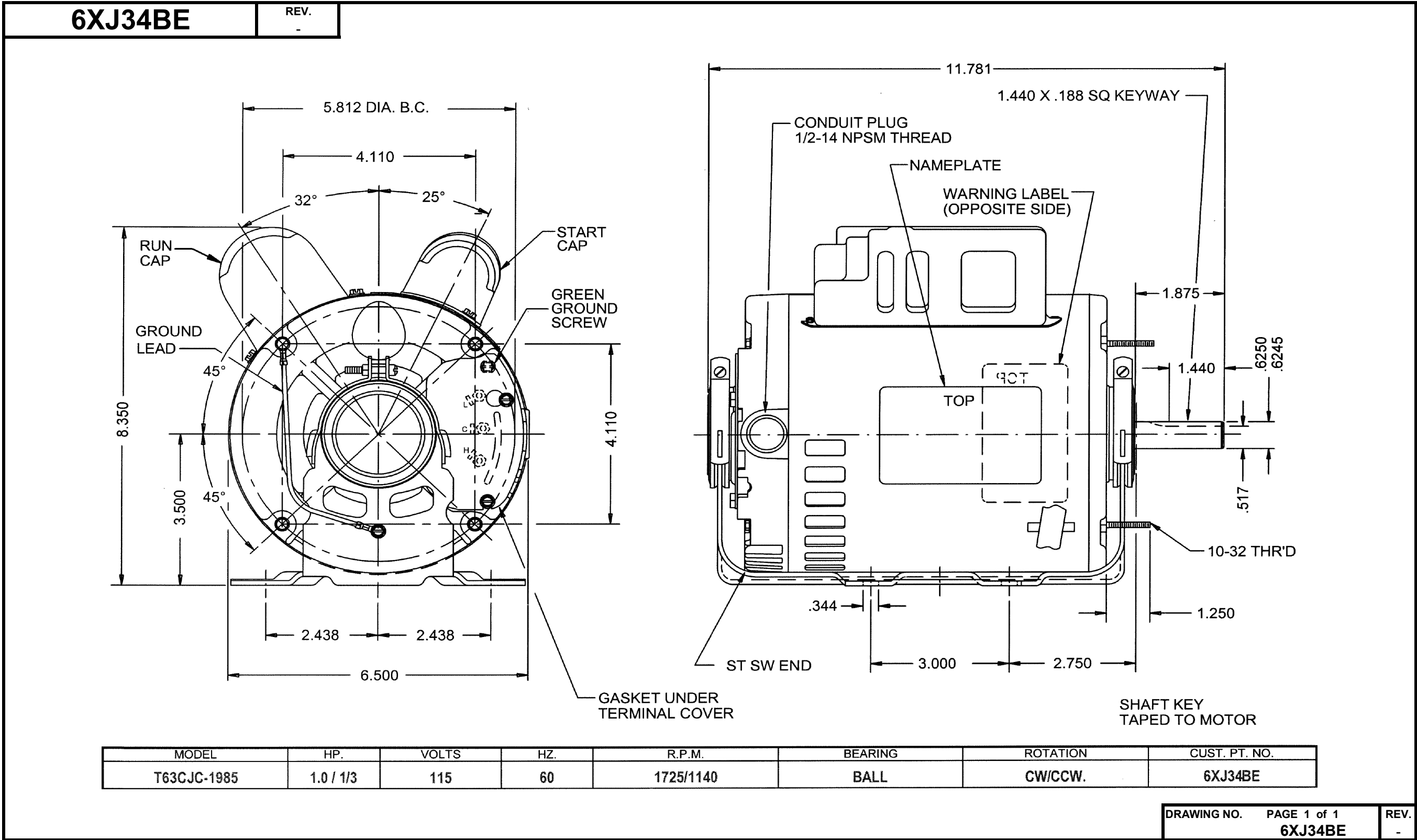


# Dimensional Drawing



Dayton Electric Mfg. Co. Lake Forest, IL 60045 USA

©2019 W.W. Grainger, Inc. This design may not be reproduced, modified or redistributed without written permission from W.W. Grainger, Inc.

# Performance Data



**6XJ34BE**

REV.  
-

## MOTOR PERFORMANCE

<b>HP:</b>	1.0 / 1/3 HP							
<b>Poles:</b>	4P/6P	<b>4P</b>	<b>6P</b>					
<b>No. of Speeds:</b>	1							
<b>Volts:</b>	115	<b>115</b>	<b>115</b>					
<b>HZ:</b>	60	<b>60</b>	<b>60</b>					
<b>Service Factor:</b>								
<b>Efficiency:</b>	@ Rated Load	74.4	49.9					
<b>Power Factor:</b>	@ Rated Load	87.2	55.7					
<b>Amps:</b>	@ No Load							
	@ Rated Load	10.1	7.1					
	@ Service Factor	11.3	7.5					
	@ Locked Rotor	57.04	NA					
<b>RPM:</b>	@ Rated Load							
<b>Ambient (°C):</b>	40							
<b>Altitude (FASL):</b>								
<b>Torques:</b>	Breakdown	110.47	59.08					
	Locked Rotor	83.97	NA					
	Pull-Up	56.85	NA					
	Rated Load							
	Service Factor							
<b>Watts:</b>	Rated Load							
<b>KVA Code:</b>								
<b>Temperature Rise:</b>	@ Rated Load	38.1	46.9					
	@ Service Factor	45	53.3					
<b>Thermal Protector:</b>	Trip Temp (°C)							
<b>Winding Material:</b>	Start (Auxiliary)	Cu						
	Run (Main)	Cu						
<b>Capacitor(s):</b>	Start (MFD / Volts)	216-260 MFD / 125 VAC						
	No. of Start Capacitors							
	Run (MFD / Volts)	25 MFD / 370 VAC						
	No. of Run Capacitors							
<b>HP:</b>								
<b>Poles:</b>								
<b>Volts:</b>								
<b>HZ:</b>								
<b>Efficiency:</b>	@ Rated Load							
<b>Power Factor:</b>	@ Rated Load							
<b>Amps:</b>	@ No Load							
	@ Rated Load							
	@ Service Factor							
	@ Locked Rotor							
<b>Torques:</b>	@ Rated Load							
	Locked Rotor							
	Pull-Up							
	Rated Load							
	Service Factor							
<b>Watts:</b>	@ Rated Load							
<b>Temperature Rise:</b>	@ Rated Load							
	@ Service Factor							

DRAWING NO. PAGE 1 REV.  
6XJ34BE -

# Performance Data



**6XJ34BE**      REV.  
-

## Dayton Manufacturing Company

### Motor Description

Model: T063CJC1985  
 Motor ID: 1  
 Poles: 4/6  
 Volts: 115  
 Frequency: 60  
 HP: 1 - 1/3  
 Speed: 1725/1140  
 Phase: 1  
 Protector: NONE

### Test Conditions

Test Type: Start      Run Cap: 0  
 Test Number: 10      Start Cap: 0µfd  
 Poles: 4  
 Volts: 115      Tested: 5/15/2012 1:45:12 PM  
 Hz: 60      Tested By: Sharp, Gerald  
 Rotation:  
 Special Cond: 2 Line Test      Gear Ratio: 1:1  
 Speed Conn:      Bearing Friction: -0.48 Oz-Ft  
 TestBoard: Amtps Performance Fixture #1      Windage Torque: -1.91 Oz-Ft

Special Points	Vline (V)	Iline (A)	Watts	RPM	Tq (Oz-ft)	HP	Eff (%)	PF (%)
	115.0	57.04	5300	3	83.97	0.003	0.0	80.8
	115.0	56.96	5300	51	86.88	0.053	0.7	80.9
	115.0	56.92	5310	208	86.54	0.215	3.0	81.1
	115.0	56.50	5293	354	93.27	0.393	5.5	81.5
	115.0	55.91	5246	485	96.18	0.556	7.9	81.6
	115.0	55.52	5187	607	95.51	0.691	9.9	81.2
	115.0	56.00	5259	720	95.42	0.817	11.6	81.7
	115.0	55.96	5334	824	102.46	1.005	14.1	82.9
	115.0	55.55	5350	921	109.29	1.198	16.7	83.7
	115.0	54.92	5338	1009	113.45	1.362	19.0	84.5
PUT OZ-FT	115.0	45.37	3922	1074	56.85	0.727	13.8	75.2
	115.0	45.29	3915	1079	58.44	0.751	14.3	75.2
	115.0	44.34	3927	1157	71.48	0.985	18.7	77.0
	115.0	42.72	3853	1228	79.84	1.167	22.6	78.4
	115.0	40.95	3758	1292	87.10	1.340	26.6	79.8
	115.0	39.09	3648	1349	93.31	1.498	30.6	81.2
	115.0	37.05	3516	1402	99.06	1.653	35.1	82.5
	115.0	35.10	3380	1446	102.16	1.759	38.8	83.7
	115.0	32.92	3221	1489	104.94	1.861	43.1	85.1
	115.0	30.68	3045	1528	106.51	1.938	47.5	86.3
	115.0	28.41	2856	1563	106.01	1.972	51.5	87.4
	115.0	26.08	2652	1595	103.45	1.964	55.2	88.4
	115.0	23.74	2439	1623	100.20	1.936	59.2	89.3
	115.0	21.35	2213	1650	96.00	1.885	63.5	90.2
	115.0	18.94	1976	1674	88.02	1.755	66.2	90.7
	115.0	16.51	1725	1697	80.31	1.623	70.2	90.9
	115.0	14.02	1455	1718	68.79	1.407	72.2	90.2
	115.0	11.63	1180	1739	56.16	1.163	73.5	88.2
	115.0	9.12	863	1761	39.97	0.838	72.4	82.3
	115.0	7.11	568	1780	22.98	0.487	64.0	69.4
	115.0	5.98	249	1799	2.51	0.054	16.1	36.2
	115.0	6.01	187	1803	0.00	0.000	0.0	27.1

DRAWING NO.      PAGE 1 of 6      REV.  
**6XJ34BE**      -

**Dayton Electric Mfg. Co. Lake Forest, IL 60045 USA**

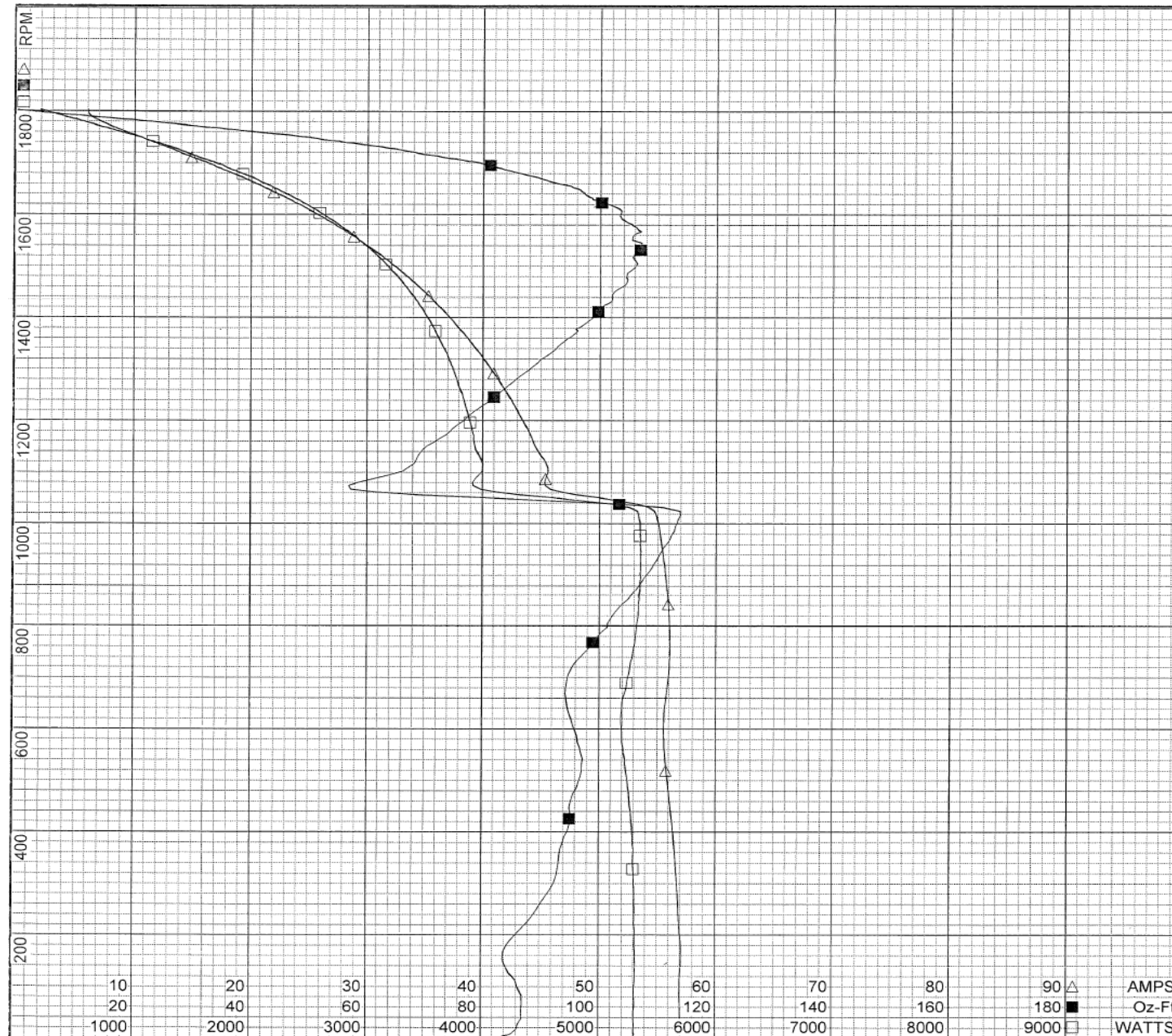
# Performance Data



**6XJ34BE**

REV.

-



**Curve Descriptions:**

Motor(1) Test 10 Start 115V 60 Hz 4P  
2 Line Test Attempt #1

- SPEED vs WATTS
- SPEED vs TORQUE
- △ SPEED vs ILine

**Motor Ratings:**

(1) T063CJC1985 ID: 1

DRAWING NO.	PAGE 2 of 6	REV.
6XJ34BE		-

**Dayton Electric Mfg. Co. Lake Forest, IL 60045 USA**



# Performance Data



**6XJ34BE**

REV.  
-

## Dayton Manufacturing Company

### Motor Description

Model: T063CJC1985  
 Motor ID: 1  
 Poles: 4/6  
 Volts: 115  
 Frequency: 60  
 HP: 1 - 1/3  
 Speed: 1725/1140  
 Phase: 1  
 Protector: NONE

### Test Conditions

Test Type: Run  
 Test Number: 4  
 Poles: 4  
 Volts: 115  
 Hz: 60  
 Rotation:  
 Special Cond:  
 Speed Conn:  
 TestBoard: Amps Performance Fixture #1  
 Run Cap: 0  
 Start Cap: 0µfd  
 Tested: 5/15/2012 1:43:35 PM  
 Tested By: Sharp, Gerald  
 Gear Ratio: 1:1  
 Bearing Friction: -0.22 Oz-Ft  
 Windage Torque: -1.33 Oz-Ft

Special Points	Vline (V)	Iline (A)	Watts	RPM	Tq (Oz-ft)	HP	Eff (%)	PF (%)
	115.0	5.64	193	1793	0.00	0.000	0.0	29.8
	115.0	6.56	506	1777	20.20	0.427	63.0	67.1
	115.0	9.02	877	1758	41.10	0.860	73.2	84.5
1 HP	115.0	9.99	1002	1749	48.02	1.000	74.4	87.2
48.7 OZ-FT	115.0	10.09	1015	1748	48.70	1.014	74.5	87.4
56 OZ-FT	115.0	11.26	1156	1740	56.00	1.160	74.9	89.3
	115.0	11.52	1185	1738	57.41	1.188	74.8	89.4
1725 RPM	115.0	13.12	1368	1725	66.24	1.360	74.2	90.7
	115.0	14.06	1475	1717	71.18	1.455	73.6	91.2
	115.0	16.68	1756	1696	82.71	1.670	71.0	91.5
	115.0	19.22	2018	1673	91.09	1.815	67.1	91.3
	115.0	21.68	2261	1650	99.09	1.946	64.2	90.7
	115.0	24.18	2491	1624	103.13	1.993	59.7	89.6
	115.0	26.59	2710	1595	108.06	2.052	56.5	88.6
	115.0	28.90	2908	1565	109.13	2.033	52.2	87.5
BDT OZ-FT	115.0	29.60	2968	1556	110.47	2.046	51.4	87.2
	115.0	31.11	3090	1532	108.92	1.987	48.0	86.3
	115.0	33.27	3255	1496	107.75	1.919	44.0	85.1
	115.0	35.35	3406	1457	105.78	1.835	40.2	83.8
	115.0	37.30	3539	1416	102.23	1.723	36.3	82.5
	115.0	39.14	3659	1370	97.87	1.596	32.5	81.3
	115.0	40.88	3762	1320	91.89	1.444	28.6	80.0
	115.0	42.48	3848	1266	85.57	1.290	25.0	78.8
	115.0	43.97	3922	1208	78.23	1.125	21.4	77.6
	115.0	45.35	3982	1145	70.52	0.961	18.0	76.4
	115.0	46.61	4037	1076	62.32	0.799	14.8	75.3
	115.0	47.71	4068	1003	53.67	0.641	11.8	74.1
	115.0	48.77	4093	925	44.16	0.486	8.9	73.0
	115.0	49.71	4109	840	33.62	0.336	6.1	71.9
	115.0	50.49	4105	748	22.23	0.198	3.6	70.7
	115.0	50.84	4066	651	14.96	0.116	2.1	69.6
	115.0	50.87	4123	550	29.09	0.191	3.4	70.5
	115.0	56.14	5270	451	96.26	0.517	7.3	81.6
	115.0	56.59	5305	329	92.19	0.361	5.1	81.5
	115.0	56.86	5310	202	87.26	0.210	2.9	81.2
	115.0	56.95	5307	67	87.08	0.069	1.0	81.0

DRAWING NO. PAGE 3 of 6 REV.  
 6XJ34BE -

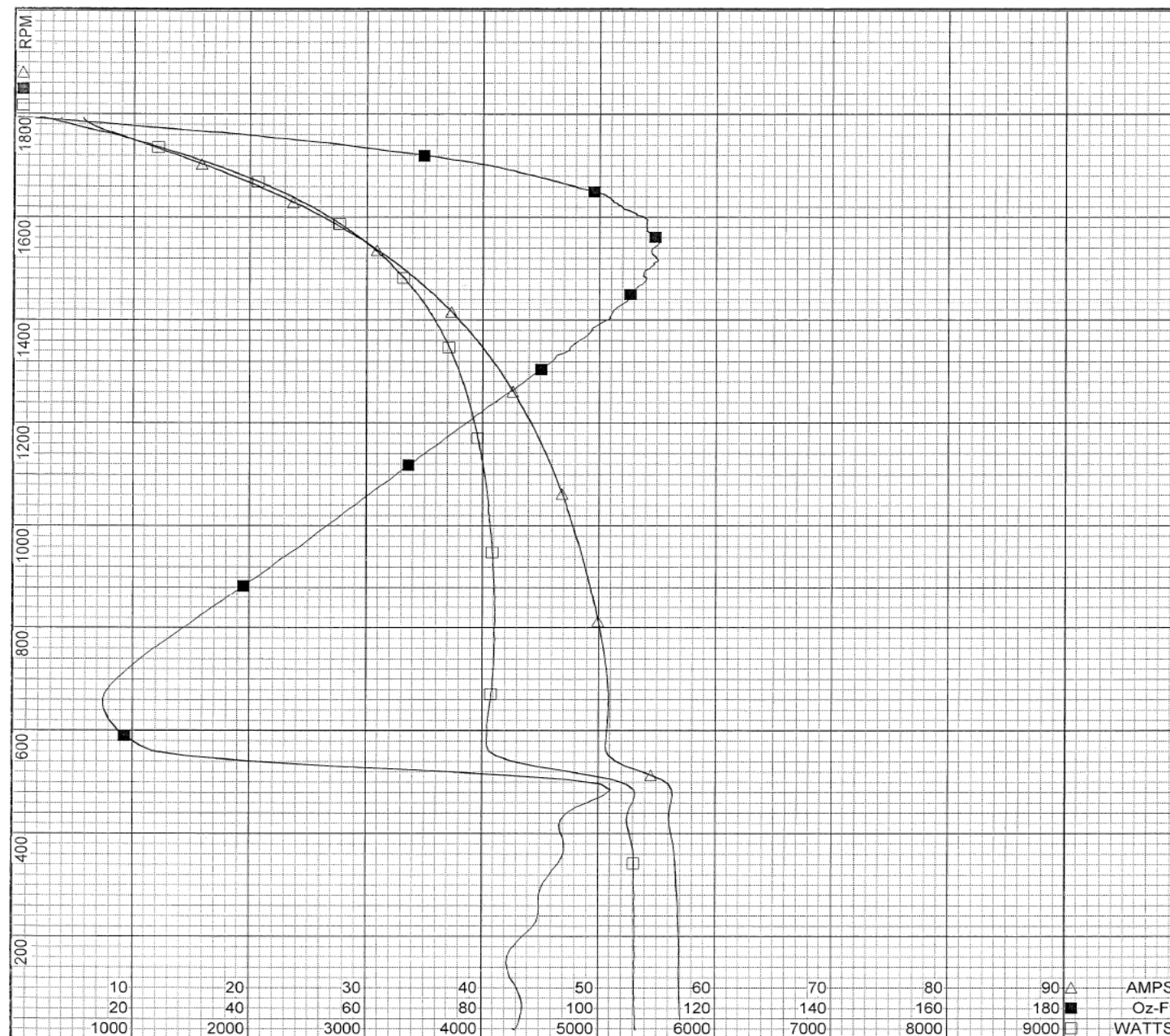
# Performance Data



6XJ34BE

REV.

-



DRAWING NO.	PAGE 4 of 6	REV.
6XJ34BE		-

Dayton Electric Mfg. Co. Lake Forest, IL 60045 USA

# Performance Data



**6XJ34BE**      REV.  
-

## Dayton Manufacturing Company

### Motor Description

Model: T063CJC1985  
 Motor ID: 1  
 Poles: 4/6  
 Volts: 115  
 Frequency: 60  
 HP: 1 - 1/3  
 Speed: 1725/1140  
 Phase: 1  
 Protector: NONE

### Test Conditions

Test Type: Run      Run Cap: 0  
 Test Number: 12      Start Cap: 0µfd  
 Poles: 6  
 Volts: 115      Tested: 5/15/2012 1:40:52 PM  
 Hz: 60      Tested By: Sharp, Gerald  
 Rotation:  
 Special Cond:      Gear Ratio: 1:1  
 Speed Conn:      Bearing Friction: -0.24 Oz-Ft  
 TestBoard:      Windage Torque: -0.61 Oz-Ft  
 Amtps Performance      Fixture #1

Special Points	Vline (V)	Iline (A)	Watts	RPM	Tq (Oz-ft)	HP	Eff (%)	PF (%)
	115.0	6.12	156	1195	0.00	0.000	0.0	22.2
	115.0	6.27	266	1184	9.41	0.133	37.1	37.0
	115.0	6.66	375	1170	18.01	0.251	49.9	49.0
0.33 HP	115.0	7.04	451	1162	23.85	0.330	54.6	55.7
24.6 OZ-FT	115.0	7.11	462	1162	24.60	0.340	54.9	56.5
	115.0	7.36	502	1156	27.22	0.375	55.6	59.4
28.3 OZ-FT	115.0	7.46	518	1154	28.30	0.389	56.0	60.4
	115.0	8.09	609	1143	34.16	0.465	56.9	65.5
1140 RPM	115.0	8.26	633	1140	35.47	0.481	56.7	66.6
	115.0	8.90	714	1129	40.01	0.538	56.2	69.8
	115.0	9.77	818	1113	45.50	0.603	55.0	72.9
	115.0	10.64	915	1098	49.53	0.647	52.8	74.8
	115.0	11.57	1010	1081	53.24	0.685	50.6	75.9
	115.0	12.51	1104	1062	55.58	0.703	47.5	76.7
	115.0	13.47	1195	1041	57.43	0.712	44.4	77.1
	115.0	14.40	1278	1021	58.78	0.714	41.7	77.2
BDT OZ-FT	115.0	15.04	1335	1003	59.08	0.706	39.4	77.1
	115.0	15.32	1357	996	58.95	0.699	38.4	77.0
	115.0	16.22	1432	970	57.92	0.669	34.9	76.7
	115.0	17.10	1502	941	57.21	0.641	31.8	76.4
	115.0	17.93	1561	911	55.00	0.597	28.5	75.7
	115.0	18.73	1617	878	52.62	0.550	25.4	75.1
	115.0	19.48	1665	841	49.35	0.494	22.1	74.3
	115.0	20.19	1711	803	46.09	0.440	19.2	73.7
	115.0	20.84	1747	760	42.20	0.382	16.3	72.9
	115.0	21.45	1780	715	37.99	0.323	13.6	72.2
	115.0	22.00	1809	664	33.31	0.263	10.9	71.5
	115.0	20.19	1555	612	24.50	0.178	8.6	67.0
	115.0	60.92	5544	565	97.08	0.653	8.8	79.1
	115.0	56.46	5244	503	96.12	0.576	8.2	80.8
	115.0	56.56	5279	436	94.72	0.492	7.0	81.2
	115.0	56.84	5298	366	93.35	0.406	5.7	81.1
	115.0	57.08	5315	289	90.05	0.310	4.3	81.0
	115.0	57.14	5313	209	87.11	0.217	3.0	80.8
	115.0	57.09	5300	124	85.46	0.126	1.8	80.7
	115.0	57.31	5317	35	86.77	0.036	0.5	80.7

DRAWING NO.      PAGE 5 of 6      REV.  
 6XJ34BE      -



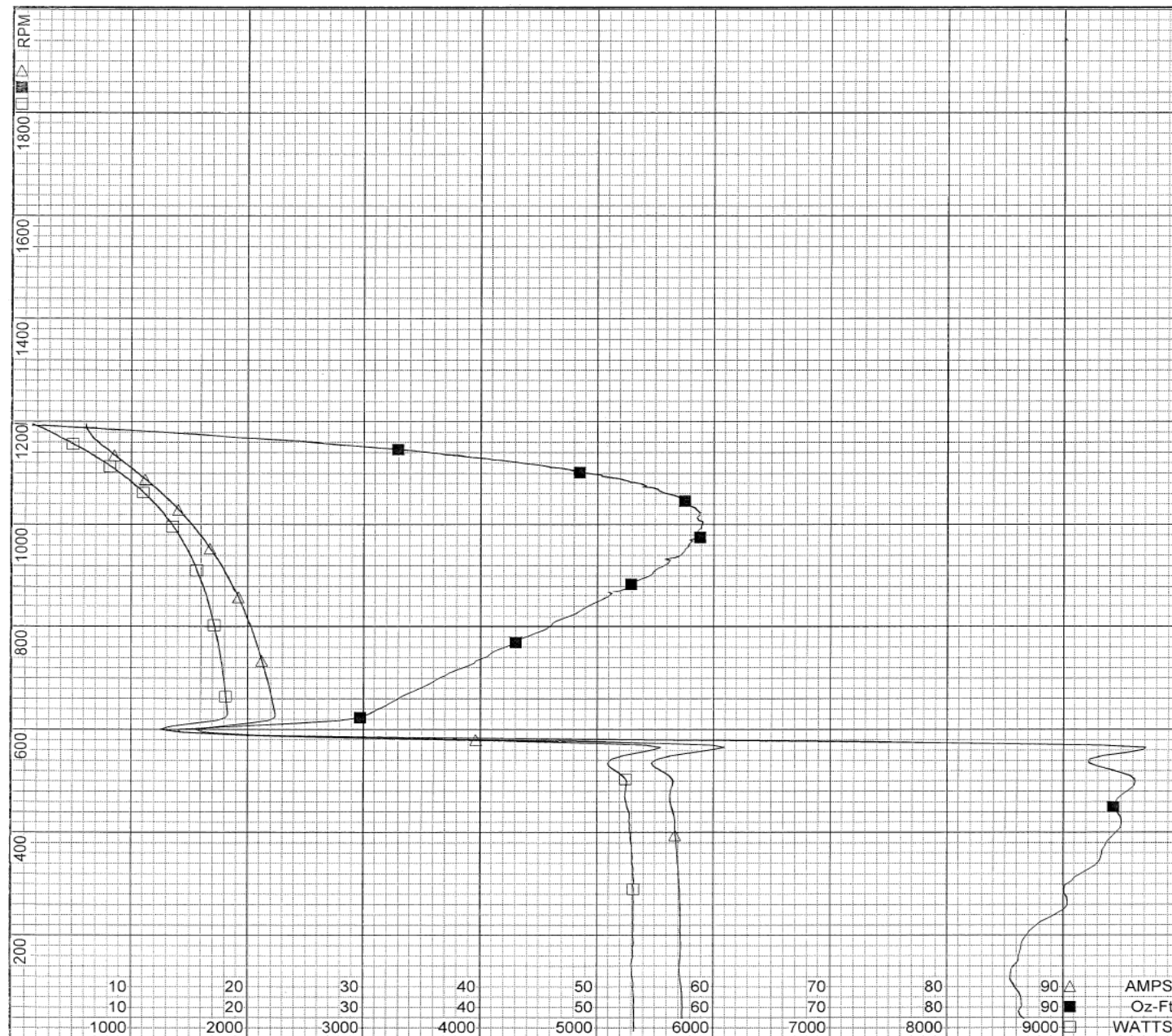
# Performance Data



**6XJ34BE**

REV.

-

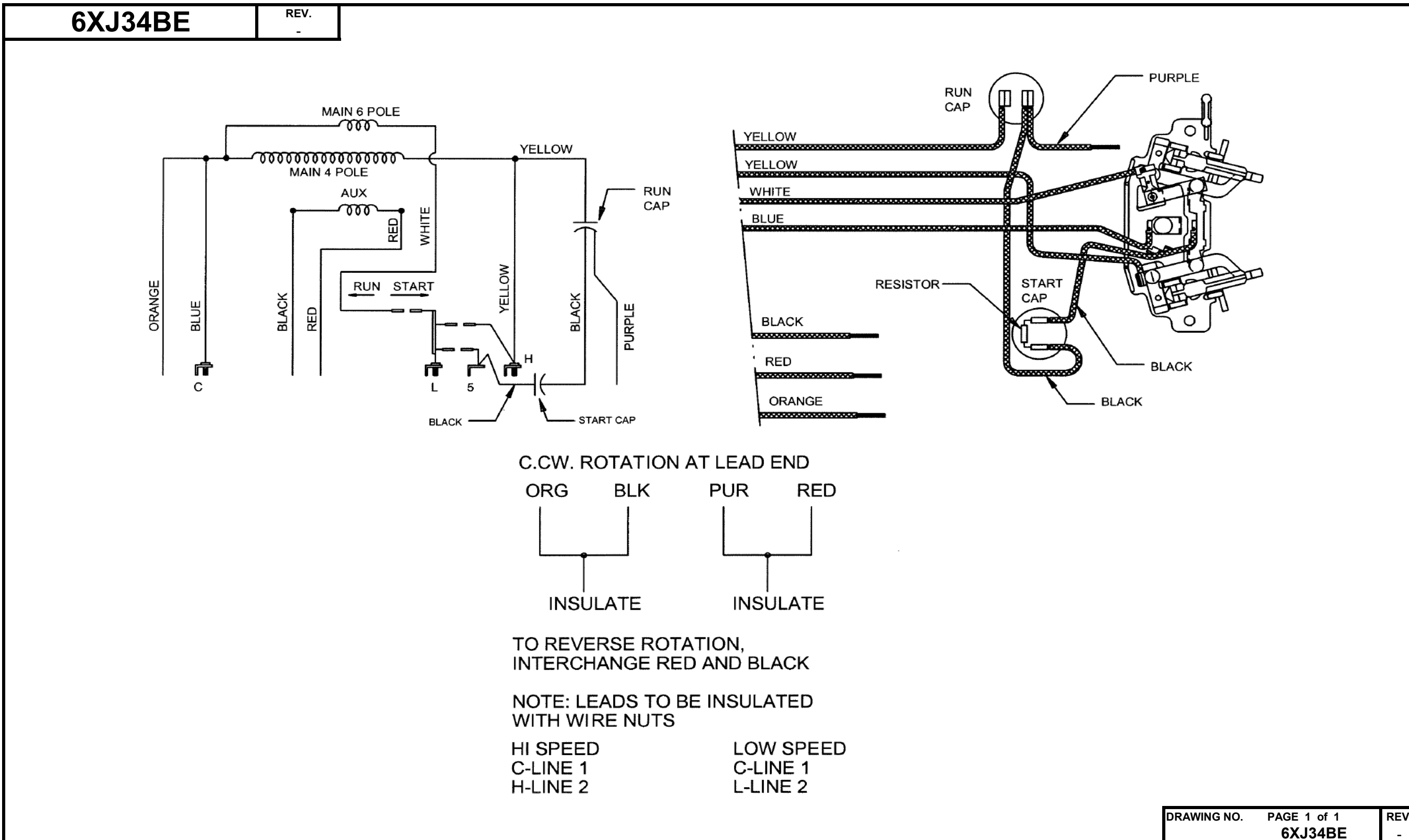


DRAWING NO.	PAGE 6 of 6	REV.
<b>6XJ34BE</b>		-

**Dayton Electric Mfg. Co. Lake Forest, IL 60045 USA**



# Wiring Diagram



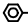

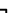
**Dayton Electric Mfg. Co. Lake Forest, IL 60045 USA**

**Dayton**<sup>®</sup>Part No **6XJ34BE****INDUSTRIAL  
MOTOR****HP:** 1.0 / 1/3**PH:** 1**VOLTS:** 115**HZ:** 60**AMPS:** 10.1/ 7.1**FR:** 56**RPM:** 1725/1140**INS CL:** B**DUTY:** CONT**AMB:** 40 °C**SF:** 1.15**SFA:** 11.3/7.5**KVA CODE :** H**ENCL:** ODP**MTR REF:** T63CJC-1985**THERMALLY PROTECTED:** NONEPROT. CODE   MFG. NO.  

258501



E47479

**Disconnect Power Before Making  
Any Electrical Connections or Changes****CONNECTIONS**L  L0 SPEEDC  COMMONH  HI SPEEDORG  INSRED PUR  INSBLK **TO REVERSE ROTATION  
INTERCHANGE RED AND BLK LEADS**

Mfd for Dayton Electric Mfg. Co., Lake Forest, IL 60045 USA

Made in Mexico