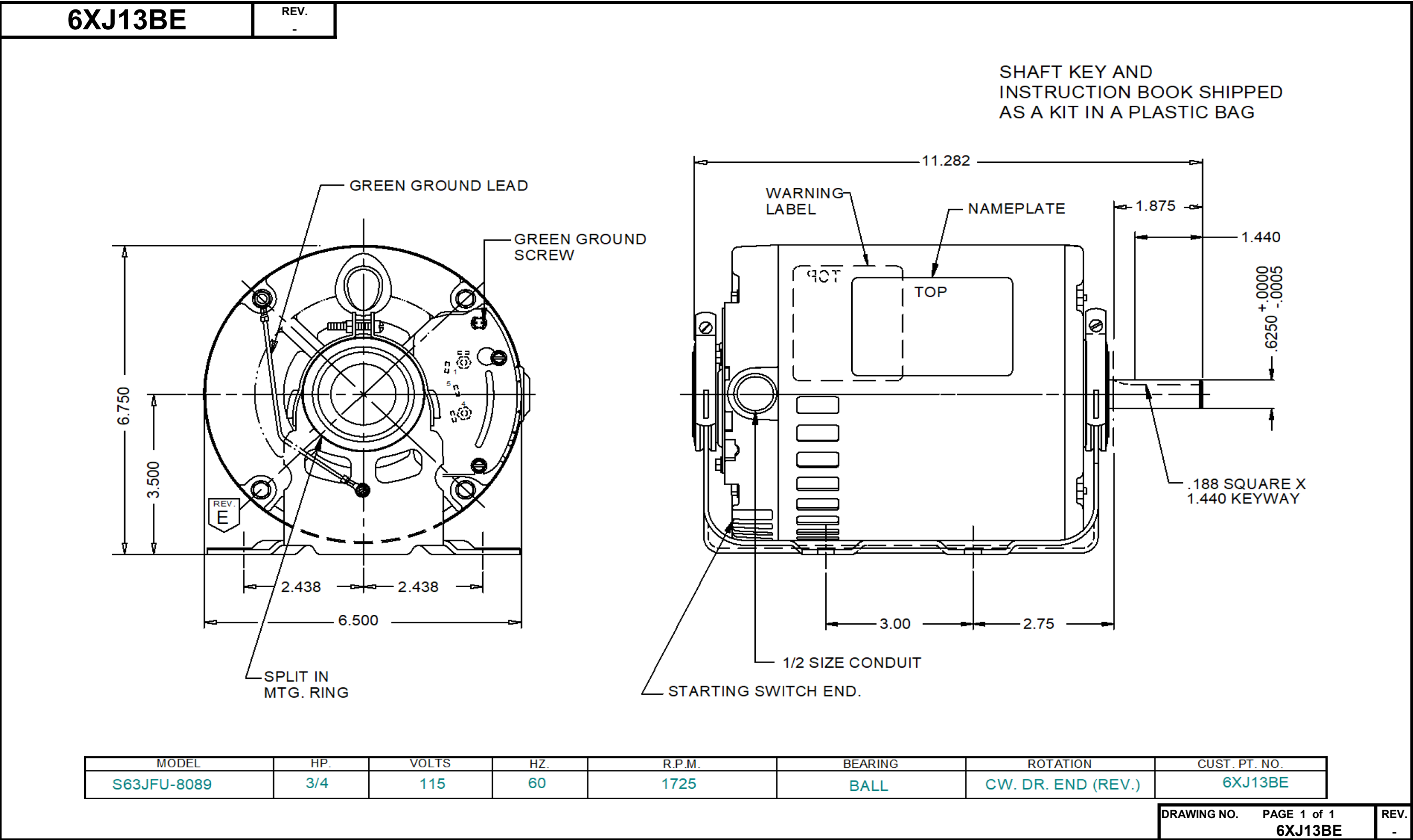


Dimensional Drawing



Dayton Electric Mfg. Co. Lake Forest, IL 60045 USA

**6XJ13BE**

 REV.  
-

## SPLIT-PHASE & CAPACITOR START MOTOR PERFORMANCE

HP:	3/4							
Poles:	4							
Ambient (°C):	40							
Altitude (FASL):								
No. of Speeds:	1							
Volts:	115	115						
HZ:	60	60						
Service Factor:	1.25							
Efficiency:	@ Rated Load	64.20						
Power Factor:	@ Rated Load	66.80						
Amps:	@ No Load	9.29						
	@ Rated Load	11.34						
	@ Service Factor	12.80						
	@ Locked Rotor	62.93						
RPM:	@ Rated Load	1746						
Torques:	Breakdown	88.2						
	Locked Rotor	36.89						
	Pull-Up	36.89						
	Rated Load	36.09						
	Service Factor	45.59						
Watts:	Rated Load	871						
KVA Code:					M			
Temperature Rise:	@ Rated Load	59.10						
	@ Service Factor	74.10						
Thermal Protector:	Trip Temp (°C)	N/A						
Winding Material:	Start (Auxiliary)				Aluminum			
	Run (Main)				Aluminum			
Capacitor(s):	Start (MFD / Volts)				N/A			
	No. of Start Capacitors				N/A			
	Run (MFD / Volts)				N/A			
	No. of Run Capacitors				N/A			

### LOW SPEED PERFORMANCE DATA:

HP:								
Poles:								
Volts:		120	208	230	277	460	100	200
HZ:		60	60	60	60	60	50	50
Efficiency:	@ Rated Load							
Power Factor:	@ Rated Load							
Amps:	@ No Load							
	@ Rated Load							
	@ Service Factor							
	@ Locked Rotor							
Torques:	BreakDown							
	Locked Rotor							
	Pull-Up							
	Rated Load							
	Service Factor							
Watts:	@ Rated Load							
Temperature Rise:	@ Rated Load							
	@ Service Factor							

 DRAWING NO. PAGE 1 of 1  
 6XJ13BE

 REV.  
-

# Performance Data



6XJ13BE		REV. -							
Dayton Manufacturing Company									
Motor Description				Test Conditions					
Model:		S063JFU8089		Test Type:		Start			
Motor ID:		1		Test Number:		3			
Poles:		4		Poles:		4		Environment: 22.1 Deg C 48 % RH 995 hPa	
Volts:		115		Volts:		115		Tested: 6/15/2015 10:37:53 AM	
Frequency:		60		Hz:		60		Tested By: Sharp, Gerald	
HP:		3/4		Rotation:					
Speed:		1725		Special Cond:		Bearing Friction: -0.44 Oz-Ft			
Phase:		1		Speed Conn:		Windage Torque: -1.77 Oz-Ft			
Protector:		NONE		TestBoard:		Amps Performance Fixture #3			
Special Points		Vline (V)	Iline (A)	Watts	RPM	Tq (Oz-ft)	HP	Eff (%)	PF (%)
PUT OZ-FT		115.0	62.93	5647	2	36.89	0.001	0.0	78.0
		115.0	62.93	5647	2	36.89	0.001	0.0	78.0
		115.0	62.74	5632	34	37.65	0.015	0.2	78.1
		115.0	62.52	5612	187	41.61	0.093	1.2	78.1
		115.0	61.93	5571	342	47.61	0.194	2.6	78.2
		115.0	61.19	5520	482	52.11	0.299	4.0	78.4
		115.0	60.69	5466	609	51.60	0.374	5.1	78.3
		115.0	60.49	5464	723	47.82	0.411	5.6	78.5
		115.0	59.74	5450	828	53.17	0.524	7.2	79.3
		115.0	58.71	5404	927	58.73	0.648	8.9	80.0
		115.0	57.56	5339	1016	64.57	0.781	10.9	80.7
		115.0	56.32	5265	1098	69.81	0.912	12.9	81.3
		115.0	55.03	5188	1171	73.85	1.029	14.8	82.0
		115.0	53.65	5090	1239	76.87	1.134	16.6	82.5
		115.0	52.20	4985	1300	79.16	1.225	18.3	83.0
		115.0	50.71	4872	1357	79.24	1.280	19.6	83.5
		115.0	48.29	4634	1407	79.27	1.328	21.4	83.4
		115.0	31.14	2912	1456	84.91	1.471	37.7	81.3
		115.0	29.01	2733	1498	85.45	1.523	41.6	81.9
		115.0	26.96	2555	1535	84.92	1.552	45.3	82.4
		115.0	24.91	2368	1570	83.28	1.557	49.1	82.7
		115.0	22.90	2181	1601	80.28	1.531	52.4	82.8
		115.0	20.86	1980	1630	75.77	1.470	55.4	82.5
		115.0	18.91	1778	1656	70.72	1.394	58.5	81.8
		115.0	16.91	1562	1681	63.92	1.279	61.1	80.3
		115.0	15.04	1347	1703	55.88	1.133	62.8	77.9
		115.0	13.33	1135	1725	47.04	0.966	63.5	74.1
		115.0	11.72	913	1744	37.10	0.770	63.0	67.7
		115.0	10.40	684	1765	25.48	0.535	58.3	57.2
		115.0	9.55	448	1784	12.20	0.259	43.2	40.8
		115.0	9.37	269	1799	1.06	0.023	6.3	25.0

DRAWING NO.

PAGE 1 of 4

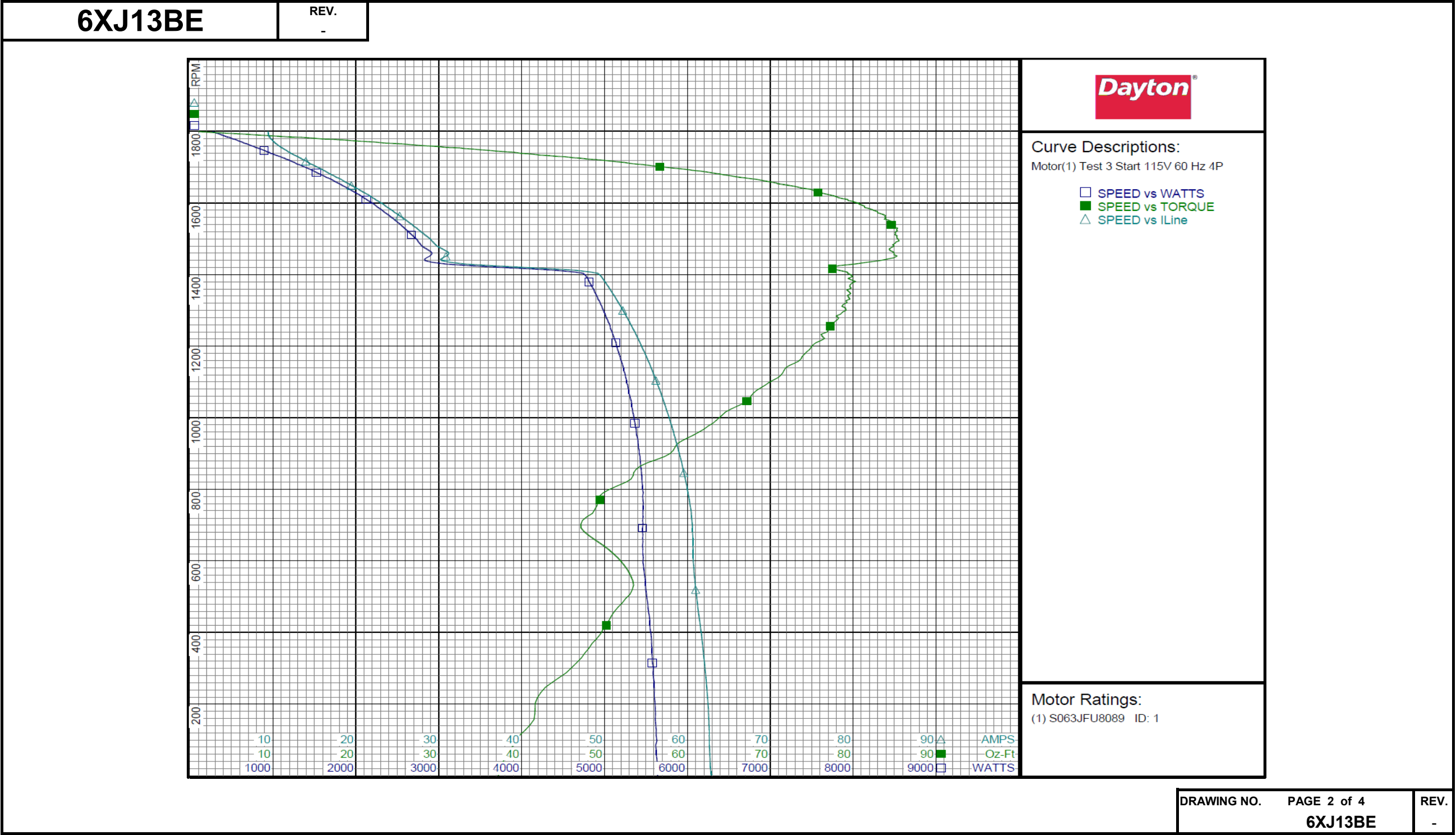
6XJ13BE

REV.

-

Dayton Electric Mfg. Co. Lake Forest, IL 60045 USA

Performance Data



Dayton Electric Mfg. Co. Lake Forest, IL 60045 USA

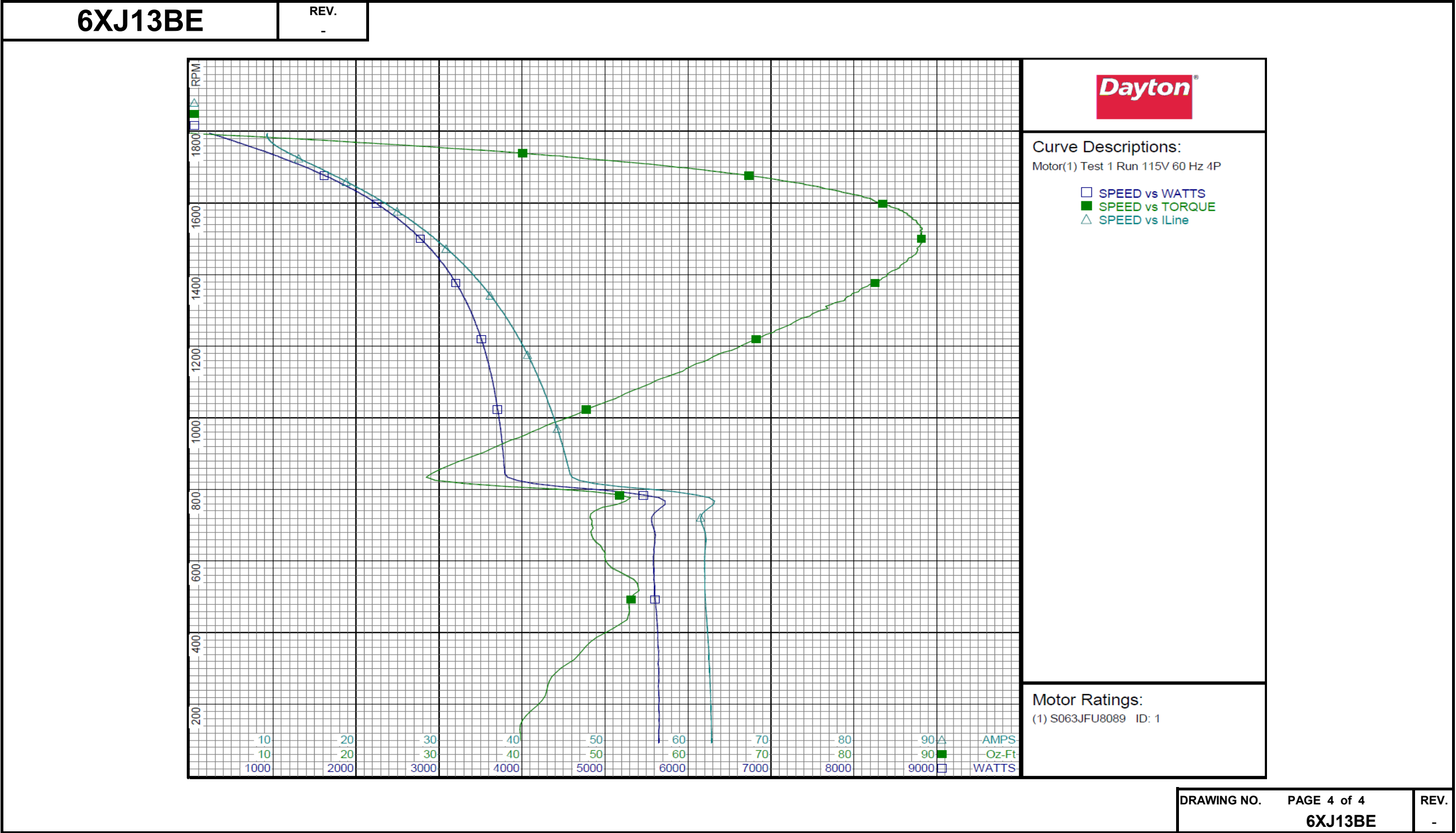
# Performance Data



6XJ13BE		REV. -							
Dayton Manufacturing Company									
Motor Description					Test Conditions				
Model:		S063JFU8089			Test Type:		Run		
Motor ID:		1			Test Number:		1		
Poles:		4			Poles:		4		
Volts:		115			Volts:		115		
Frequency:		60			Hz:		60		
HP:		3/4			Rotation:		Environment: 22.1 Deg C 48 % RH 995 hPa		
Speed:		1725			Special Cond:		Tested: 6/15/2015 10:35:34 AM		
Phase:		1			Speed Conn:		Tested By: Sharp, Gerald		
Protector:		NONE			TestBoard:		Amps Performance Fixture #3		
Bearing Friction:							-0.44 Oz-Ft		
Windage Torque:							-1.86 Oz-Ft		
Special Points		Vline (V)	Iline (A)	Watts	RPM	Tq (Oz-ft)	HP	Eff (%)	PF (%)
		115.0	9.29	230	1795	0.00	0.000	0.0	21.5
		115.0	9.50	479	1776	14.85	0.314	48.9	43.8
		115.0	10.50	727	1757	28.68	0.600	61.6	60.2
36.5 OZ-FT		115.0	11.39	879	1745	36.50	0.758	64.4	67.1
0.75 HP		115.0	11.34	871	1746	36.09	0.750	64.2	66.8
		115.0	12.09	981	1736	41.21	0.852	64.8	70.6
45.7 OZ-FT		115.0	12.82	1077	1728	45.70	0.940	65.1	73.1
0.938 HP		115.0	12.80	1074	1728	45.59	0.938	65.1	73.0
1725 RPM		115.0	13.08	1110	1725	47.17	0.969	65.1	73.7
		115.0	13.78	1203	1717	51.28	1.048	65.0	75.9
		115.0	15.78	1442	1695	60.78	1.226	63.4	79.5
		115.0	17.76	1665	1672	68.73	1.368	61.3	81.5
		115.0	19.91	1891	1646	75.57	1.481	58.4	82.6
		115.0	22.09	2109	1619	80.97	1.560	55.2	83.0
		115.0	24.10	2298	1589	84.41	1.597	51.8	82.9
		115.0	26.20	2493	1558	87.03	1.614	48.3	82.7
BDT OZ-FT		115.0	28.07	2656	1526	88.22	1.602	45.0	82.3
		115.0	28.26	2675	1523	87.96	1.595	44.5	82.3
		115.0	30.24	2839	1485	88.05	1.557	40.9	81.6
		115.0	32.18	2995	1445	86.57	1.490	37.1	80.9
		115.0	34.05	3136	1401	84.00	1.401	33.3	80.1
		115.0	35.82	3264	1352	80.53	1.296	29.6	79.2
		115.0	37.49	3374	1300	76.07	1.178	26.0	78.3
		115.0	39.05	3473	1244	70.52	1.044	22.4	77.3
		115.0	40.52	3556	1183	64.28	0.905	19.0	76.3
		115.0	41.87	3630	1117	57.77	0.768	15.8	75.4
		115.0	43.11	3690	1046	50.29	0.626	12.7	74.4
		115.0	44.25	3740	970	42.13	0.486	9.7	73.5
		115.0	45.29	3777	887	33.37	0.352	7.0	72.5
		115.0	55.08	4820	801	43.90	0.419	6.5	76.1
		115.0	61.55	5559	713	48.43	0.411	5.5	78.5
		115.0	62.00	5579	612	49.97	0.364	4.9	78.2
		115.0	62.05	5600	506	53.39	0.321	4.3	78.5
		115.0	62.40	5634	387	48.98	0.226	3.0	78.5
		115.0	62.64	5647	264	43.28	0.136	1.8	78.4
		115.0	62.81	5648	130	39.73	0.061	0.8	78.2
							DRAWING NO.	PAGE 3 of 4	REV.
							6XJ13BE	-	-

Dayton Electric Mfg. Co. Lake Forest, IL 60045 USA

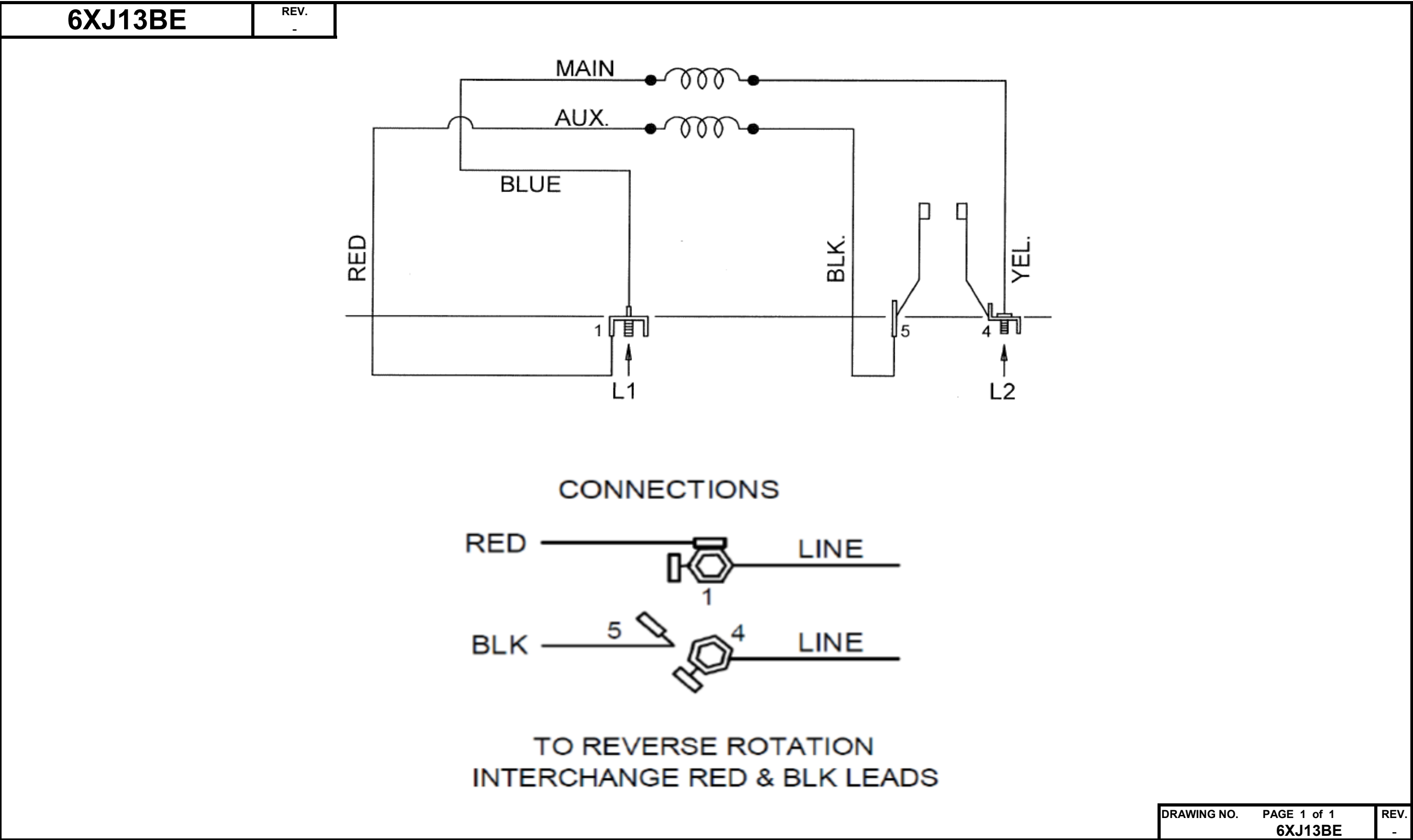
Performance Data



Dayton Electric Mfg. Co. Lake Forest, IL 60045 USA



Wiring Diagram



Dayton Electric Mfg. Co. Lake Forest, IL 60045 USA



Part No **6XJ13BE**



# SPLIT PHASE MOTOR

**HP:** 3/4

**PH:** 1

**VOLTS:** 115

**HZ:** 60

**AMPS:** 11.3

**FR:** 56

**RPM:** 1725

**INS CL:** B

**DUTY:** CONT

**AMB:** 40 °C

**SF:** 1.25

**SFA:** 12.8

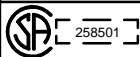
**KVA CODE:** M

**ENCL:** ODP

**MTR REF:** S63JFU-8089

**THERMALLY PROTECTED:** NONE

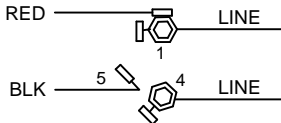
MFG. NO.



E47479

**Disconnect Power Before Making  
Any Electrical Connections or Changes**

## CONNECTIONS



**TO REVERSE ROTATION  
INTERCHANGE RED & BLK LEADS**

Mfd for Dayton Electric Mfg. Co., Lake Forest, IL 60045 USA

Made in Mexico