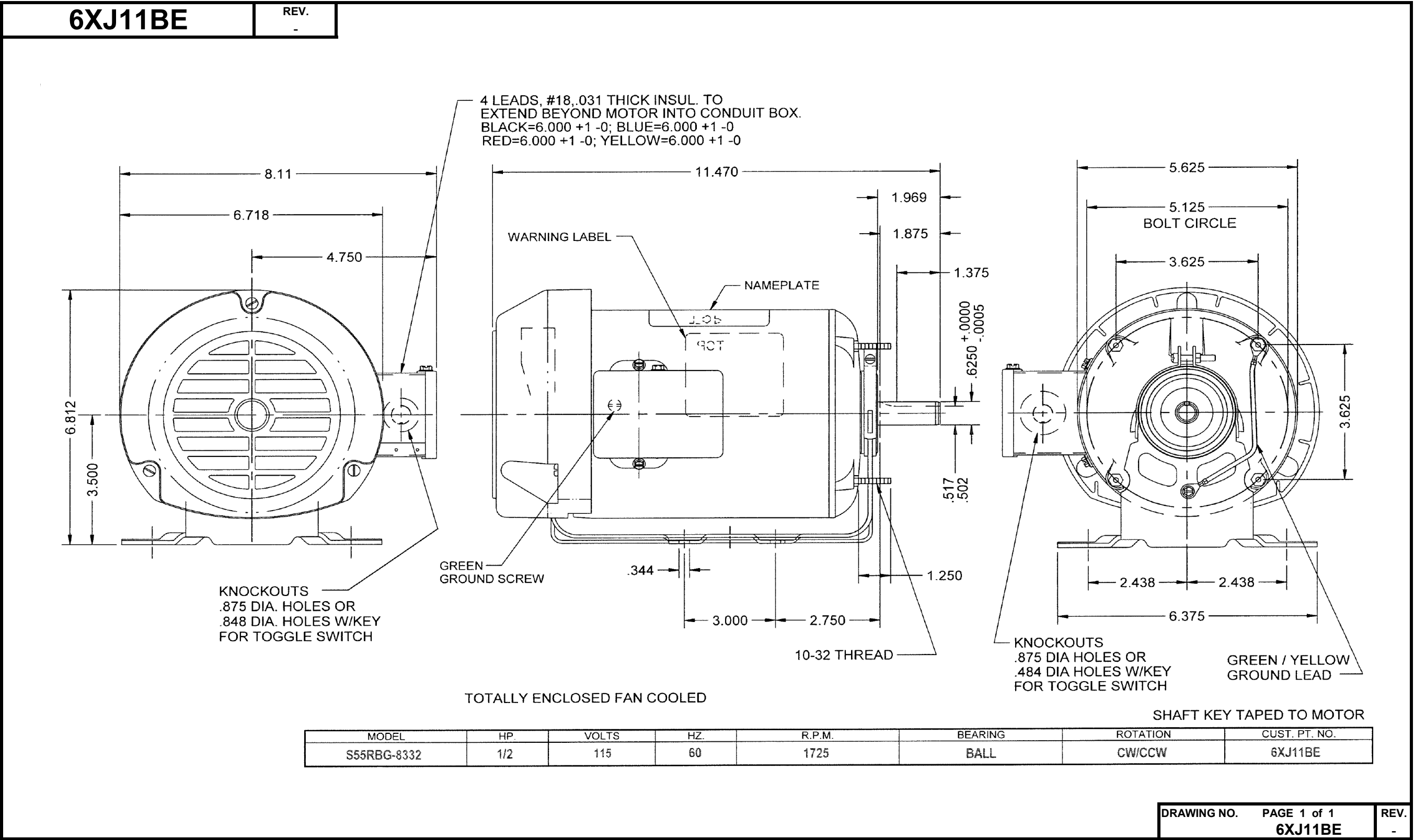


Dimensional Drawing



Dayton Electric Mfg. Co. Lake Forest, IL 60045 USA



6XJ11BE

REV.
-

MOTOR PERFORMANCE

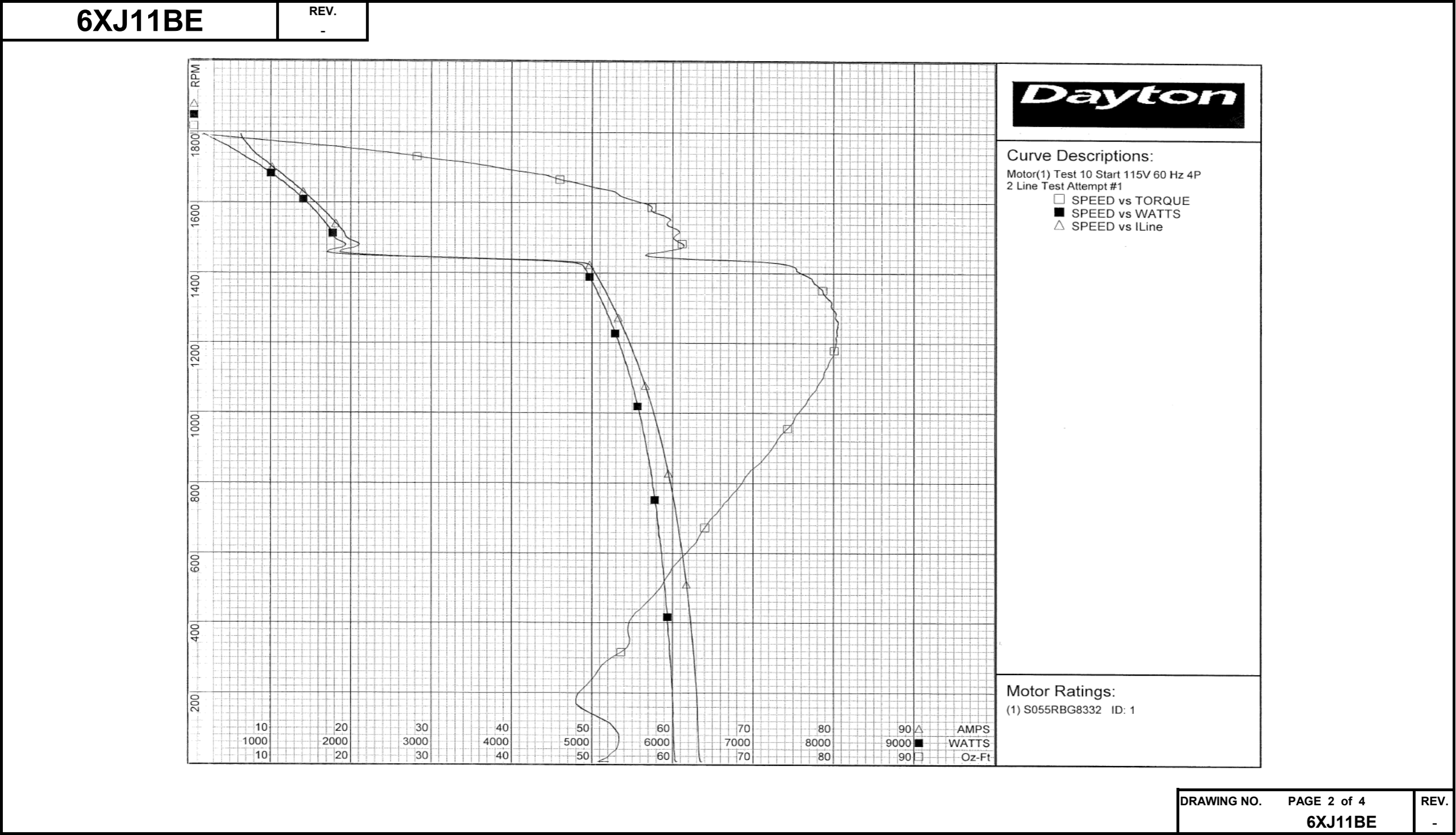
HP:	1/2 HP							
Poles:	4P							
No. of Speeds:	1							
Volts:	115	115						
HZ:	60	60						
Service Factor:	1							
Efficiency:	@ Rated Load	63.9						
Power Factor:	@ Rated Load	63.5						
Amps:	@ No Load							
	@ Rated Load	8						
	@ Service Factor	N/A						
	@ Locked Rotor	63.64						
RPM:	@ Rated Load							
Ambient (°C):	40							
Altitude (FASL):								
Torques:	Breakdown	62.78						
	Locked Rotor	52.08						
	Pull-Up	48						
	Rated Load							
	Service Factor							
Watts:	Rated Load							
KVA Code:								
Temperature Rise:	@ Rated Load	89.6						
	@ Service Factor							
Thermal Protector:	Trip Temp (°C)							
Winding Material:	Start (Auxiliary)					Al		
	Run (Main)					Cu		
Capacitor(s):	Start (MFD / Volts)							
	No. of Start Capacitors							
	Run (MFD / Volts)							
	No. of Run Capacitors							
HP:								
Poles:								
Volts:								
HZ:								
Efficiency:	@ Rated Load							
Power Factor:	@ Rated Load							
Amps:	@ No Load							
	@ Rated Load							
	@ Service Factor							
	@ Locked Rotor							
Torques:	@ Rated Load							
	Locked Rotor							
	Pull-Up							
	Rated Load							
	Service Factor							
Watts:	@ Rated Load							
Temperature Rise:	@ Rated Load							
	@ Service Factor							

Performance Data



6XJ11BE		REV. -															
Dayton Manufacturing Company																	
Motor Description				Test Conditions													
Model:		S055RBG8332		Test Type:		Start		Run Cap:		0							
Motor ID:		1		Test Number:		10		Start Cap:		0µfd							
Poles:		4		Poles:		4											
Volts:		115		Volts:		115		Tested:		3/30/2012 9:41:15 AM							
Frequency:		60		Hz:		60		Tested By:		Sharp, Gerald							
HP:		1/2		Rotation:				Gear Ratio:		1:1							
Speed:		1725		Special Cond:		2 Line Test		Bearing Friction:		-0.50 Oz-Ft							
Phase:		1		Speed Conn:				Windage Torque:		-2.01 Oz-Ft							
Protector:		NONE		TestBoard:		Amps Performance		Fixture #1									
Special Points		Vline (V)		Iline (A)		Watts		RPM		Tq (Oz-ft)		HP		Eff (%)		PF (%)	
		115.0		63.64		6055		4		52.08		0.002		0.0		82.7	
		115.0		63.27		6019		38		53.00		0.024		0.3		82.7	
PUT OZ-FT		115.0		63.04		5999		183		48.00		0.104		1.3		82.7	
		115.0		63.04		5999		183		48.00		0.104		1.3		82.7	
		115.0		62.61		5964		316		53.62		0.202		2.5		82.8	
		115.0		62.10		5929		440		56.04		0.294		3.7		83.0	
		115.0		61.46		5885		556		59.90		0.396		5.0		83.3	
		115.0		60.79		5829		663		63.69		0.503		6.4		83.4	
		115.0		60.06		5777		762		67.22		0.610		7.9		83.6	
		115.0		59.25		5713		854		70.67		0.718		9.4		83.8	
		115.0		58.37		5645		940		73.52		0.822		10.9		84.1	
		115.0		57.42		5567		1019		76.30		0.925		12.4		84.3	
		115.0		56.41		5487		1092		78.44		1.020		13.9		84.6	
		115.0		55.36		5396		1159		79.80		1.102		15.2		84.8	
		115.0		54.28		5301		1222		80.45		1.170		16.5		84.9	
		115.0		53.16		5199		1279		80.26		1.222		17.5		85.1	
		115.0		52.03		5097		1332		79.12		1.254		18.4		85.2	
		115.0		50.90		4993		1381		77.36		1.272		19.0		85.3	
		115.0		49.73		4873		1424		74.44		1.262		19.3		85.2	
		115.0		18.80		1732		1464		59.47		1.037		44.6		80.1	
		115.0		19.41		1789		1502		60.13		1.076		44.9		80.1	
		115.0		18.29		1698		1537		59.36		1.086		47.7		80.7	
		115.0		16.98		1582		1570		58.14		1.086		51.2		81.0	
		115.0		15.65		1457		1599		56.49		1.075		55.1		81.0	
		115.0		14.35		1333		1625		53.20		1.029		57.6		80.8	
		115.0		13.07		1203		1649		49.23		0.967		59.9		80.1	
		115.0		11.80		1070		1673		45.07		0.897		62.5		78.9	
		115.0		10.59		930		1694		39.38		0.794		63.7		76.3	
		115.0		9.53		799		1715		33.82		0.690		64.4		72.9	
		115.0		8.32		648		1734		27.31		0.564		64.9		67.7	
		115.0		7.50		511		1753		20.07		0.419		61.2		59.2	
		115.0		6.83		354		1772		10.88		0.230		48.4		45.0	
		115.0		6.34		196		1791		1.90		0.041		15.4		26.9	
		115.0		6.30		165		1794		0.00		0.000		0.0		22.8	
DRAWING NO. PAGE 1 of 4 REV.																	
6XJ11BE																	

Performance Data



Dayton Electric Mfg. Co. Lake Forest, IL 60045 USA

Performance Data



6XJ11BE		REV.						
		-						
Dayton Manufacturing Company								
Motor Description				Test Conditions				
Model:	S055RBG8332			Test Type:	Run	Run Cap:	0	
Motor ID:	1			Test Number:	20	Start Cap:	0µfd	
Poles:	4			Poles:	4			
Volts:	115			Volts:	115	Tested:	3/30/2012 9:39:42 AM	
Frequency:	60			Hz:	60	Tested By:	Sharp, Gerald	
HP:	1/2			Rotation:		Gear Ratio:	1:1	
Speed:	1725			Special Cond:		Bearing Friction:	-0.56 Oz-Ft	
Phase:	1			Speed Conn:		Windage Torque:	-2.14 Oz-Ft	
Protector:	NONE			TestBoard:	Amps Performance Fixture #1			
Special Points	Vline (V)	Iline (A)	Watts	RPM	Tq (Oz-ft)	HP	Eff (%)	PF (%)
	115.0	6.15	147	1790	0.00	0.000	0.0	20.8
	115.0	6.50	324	1770	10.35	0.218	50.1	43.4
	115.0	7.43	506	1750	20.25	0.422	62.3	59.2
0.5 HP	115.0	8.00	584	1741	24.13	0.500	63.9	63.5
24.4 OZ-FT	115.0	8.04	589	1740	24.40	0.505	64.0	63.7
	115.0	8.42	650	1731	27.73	0.572	65.6	67.1
1725 RPM	115.0	8.70	697	1725	30.04	0.617	66.0	69.7
	115.0	9.60	818	1711	35.66	0.727	66.3	74.0
	115.0	10.83	961	1690	41.45	0.834	64.7	77.1
	115.0	12.29	1119	1666	47.17	0.936	62.4	79.2
	115.0	13.67	1265	1642	52.38	1.024	60.4	80.4
	115.0	15.06	1402	1616	55.69	1.071	57.0	80.9
	115.0	16.47	1537	1587	58.79	1.111	53.9	81.2
	115.0	17.86	1662	1557	61.40	1.138	51.1	80.9
	115.0	19.26	1781	1523	62.31	1.130	47.3	80.4
BDT OZ-FT	115.0	19.53	1803	1516	62.78	1.133	46.9	80.3
	115.0	20.62	1889	1487	62.08	1.099	43.4	79.7
	115.0	21.94	1990	1446	61.92	1.066	40.0	78.9
	115.0	23.19	2079	1403	60.46	1.010	36.3	77.9
	115.0	24.40	2158	1356	57.96	0.935	32.3	76.9
	115.0	25.54	2228	1305	55.47	0.862	28.8	75.9
	115.0	26.61	2288	1250	52.06	0.775	25.3	74.8
	115.0	27.60	2339	1189	48.28	0.683	21.8	73.7
	115.0	28.52	2382	1124	44.05	0.589	18.5	72.6
	115.0	29.35	2419	1054	39.60	0.497	15.3	71.7
	115.0	30.13	2449	978	34.82	0.406	12.4	70.7
	115.0	30.79	2472	898	30.26	0.323	9.8	69.8
	115.0	31.40	2487	810	25.02	0.241	7.2	68.9
	115.0	31.93	2502	716	19.96	0.170	5.1	68.1
	115.0	32.40	2511	616	15.13	0.111	3.3	67.4
	115.0	32.76	2518	509	10.94	0.066	2.0	66.8
	115.0	33.02	2522	396	6.15	0.029	0.9	66.4
	115.0	33.17	2522	274	2.36	0.008	0.2	66.1
	115.0	33.23	2518	145	0.65	0.001	0.0	65.9

DRAWING NO. PAGE 3 of 4

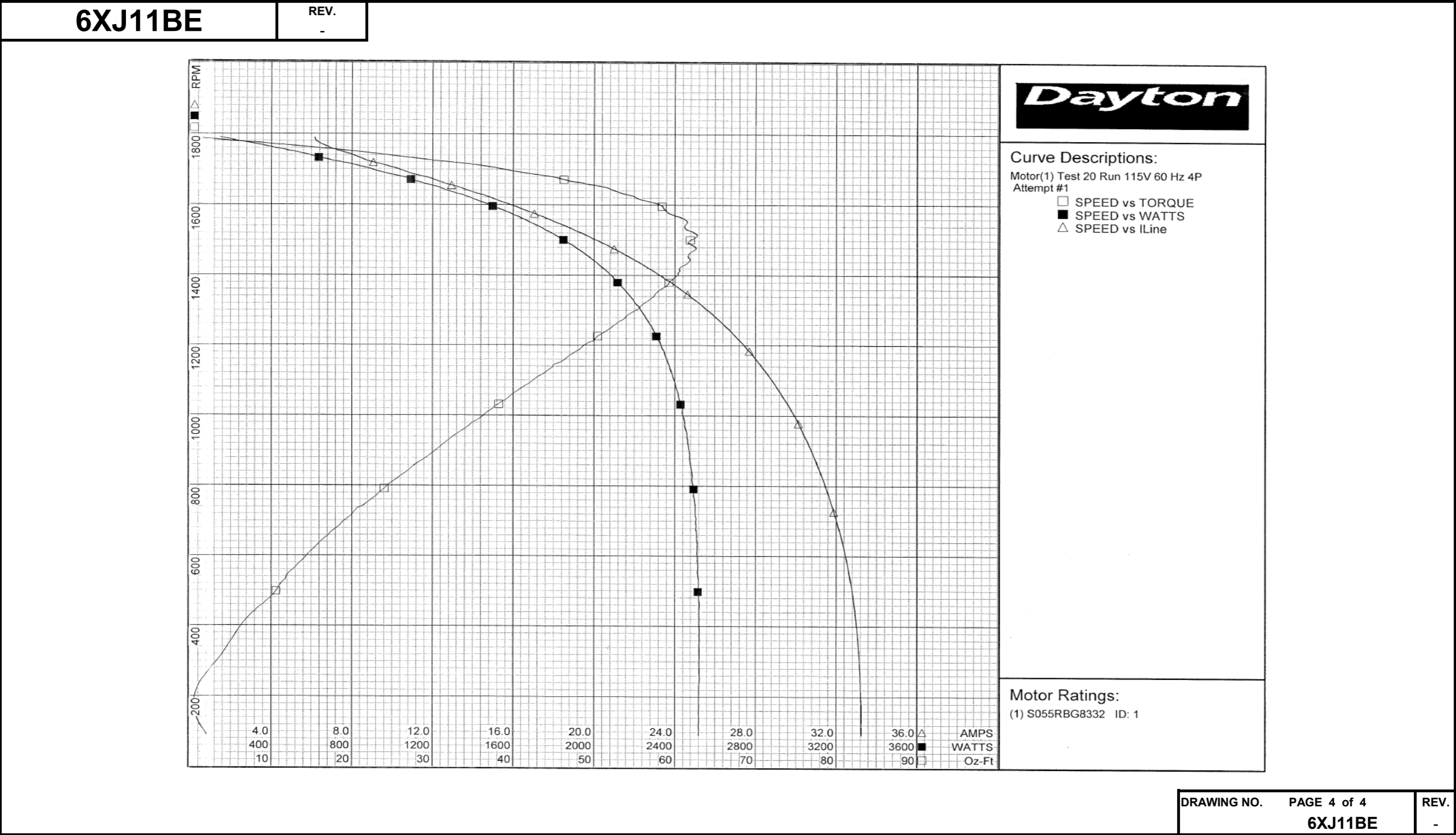
6XJ11BE

REV.

DRAWING NO.	PAGE 3 of 4	REV.
6XJ11BE		-

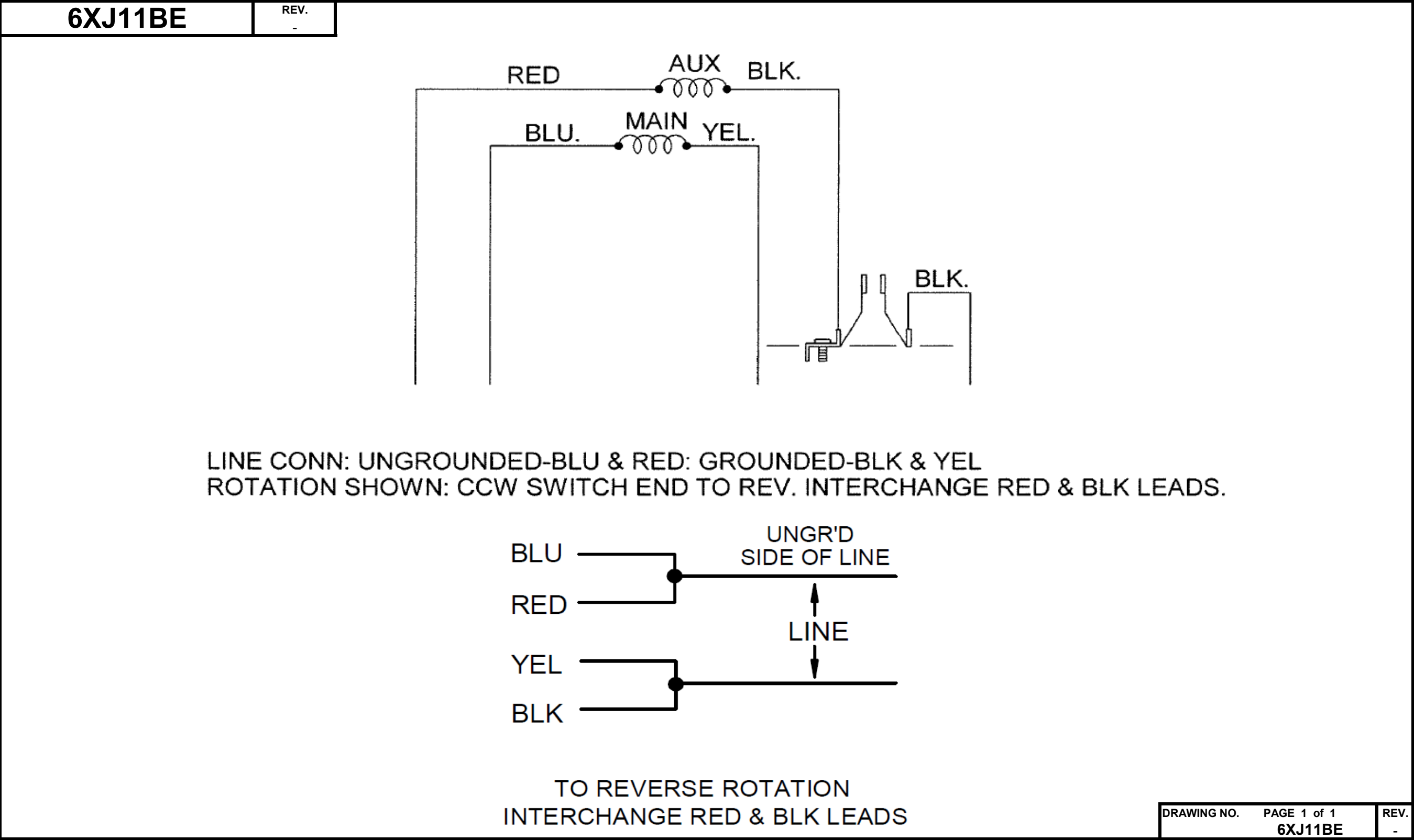
Dayton Electric Mfg. Co. Lake Forest, IL 60045 USA

Performance Data



Dayton Electric Mfg. Co. Lake Forest, IL 60045 USA

Wiring Diagram



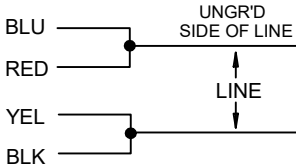
Dayton Electric Mfg. Co. Lake Forest, IL 60045 USA

Dayton[®]Part
No**6XJ11BE****SPLIT PHASE
MOTOR****HP:** 1/2**PH:** 1**VOLTS:** 115**HZ:** 60**AMPS:** 8.0**FR:** 56**RPM:** 1725**INS CL:** F**DUTY:** CONT**AMB:** 40°C**SF:** 1.00**SFA:****KVA CODE:** R**ENCL:** TEFC**MTR REF:** S55RBG-8332**THERMALLY PROTECTED:** NONEPROT. CODE ☐ ☐ MFG. NO. ☐ ☐

258501



E47479

**Disconnect Power Before Making
Any Electrical Connections or Changes****TO REVERSE ROTATION
INTERCHANGE RED & BLK LEADS****Mfd for Dayton Electric Mfg. Co., Lake Forest, IL 60045 USA****Made in Mexico**