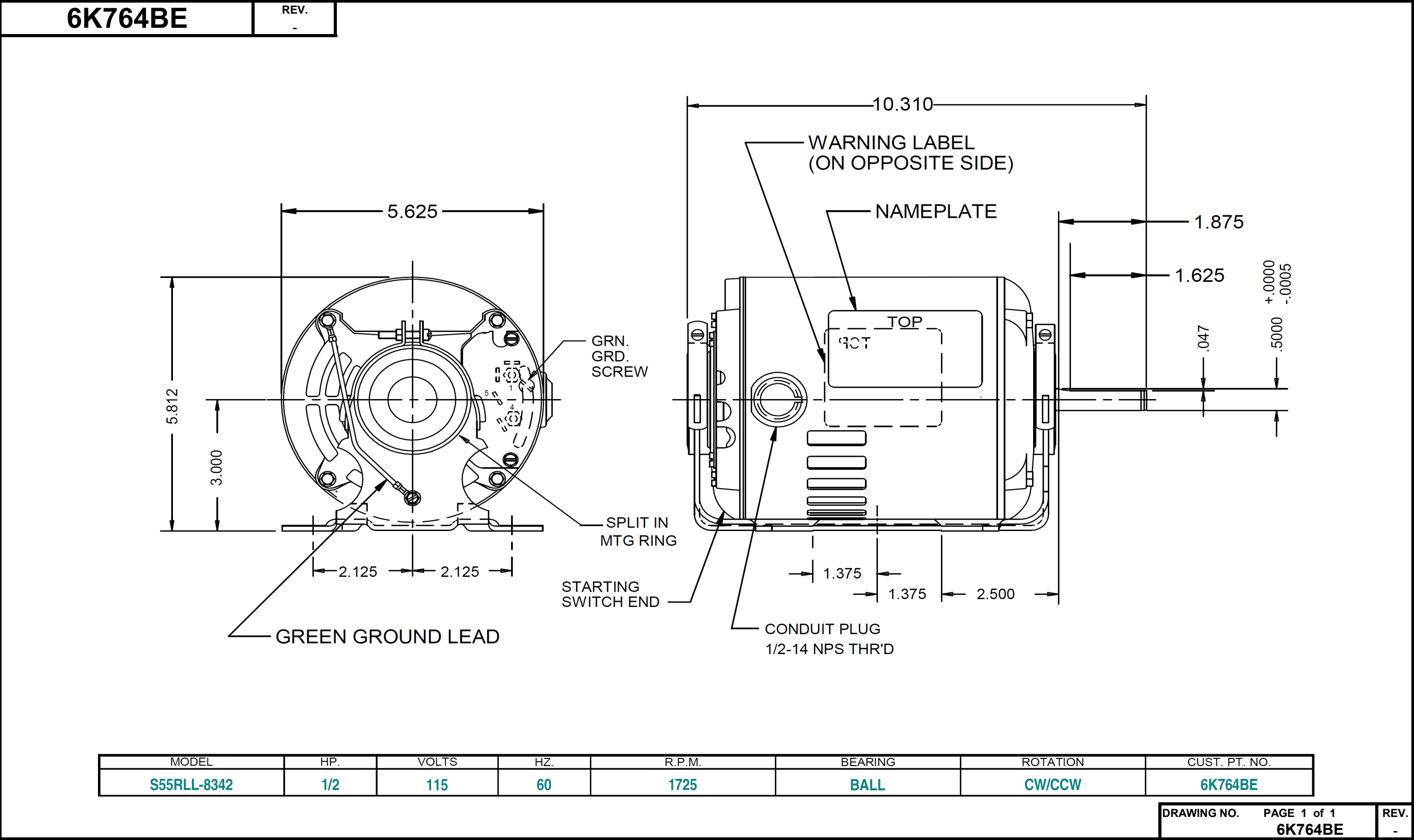


Dimensional Drawing



Dayton Electric Mfg. Co. Lake Forest, IL 60045 USA



6K764BE

REV.  
-

MOTOR PERFORMANCE

|                    |                         |       |  |  |  |    |  |  |
|--------------------|-------------------------|-------|--|--|--|----|--|--|
| HP:                | 1/2 HP                  |       |  |  |  |    |  |  |
| Poles:             | 4P                      |       |  |  |  |    |  |  |
| No. of Speeds:     | 1 Spd                   |       |  |  |  |    |  |  |
| Volts:             | 115                     | 115   |  |  |  |    |  |  |
| HZ:                | 60                      | 60    |  |  |  |    |  |  |
| Service Factor:    | 1.25                    |       |  |  |  |    |  |  |
| Efficiency:        | @ Rated Load            | 54.5  |  |  |  |    |  |  |
| Power Factor:      | @ Rated Load            | 58.5  |  |  |  |    |  |  |
| Amps:              | @ No Load               |       |  |  |  |    |  |  |
|                    | @ Rated Load            | 8.9   |  |  |  |    |  |  |
|                    | @ Service Factor        | 9.6   |  |  |  |    |  |  |
|                    | @ Locked Rotor          | 62.27 |  |  |  |    |  |  |
| RPM:               | @ Rated Load            |       |  |  |  |    |  |  |
| Ambient (°C):      | 40                      |       |  |  |  |    |  |  |
| Torques:           | Breakdown               | 61.58 |  |  |  |    |  |  |
|                    | Locked Rotor            | 44.91 |  |  |  |    |  |  |
|                    | Pull-Up                 | 39.97 |  |  |  |    |  |  |
|                    | Rated Load              |       |  |  |  |    |  |  |
|                    | Service Factor          |       |  |  |  |    |  |  |
| Watts:             | Rated Load              |       |  |  |  |    |  |  |
| KVA Code:          |                         |       |  |  |  |    |  |  |
| Temperature Rise:  | @ Rated Load            | 43.5  |  |  |  |    |  |  |
|                    | @ Service Factor        | 51.7  |  |  |  |    |  |  |
| Thermal Protector: | Trip Temp (°C)          |       |  |  |  |    |  |  |
| Winding Material:  | Start (Auxiliary)       |       |  |  |  | Cu |  |  |
|                    | Run (Main)              |       |  |  |  | Al |  |  |
| Capacitor(s):      | Start (MFD / Volts)     |       |  |  |  |    |  |  |
|                    | No. of Start Capacitors |       |  |  |  |    |  |  |
|                    | Run (MFD / Volts)       |       |  |  |  |    |  |  |
|                    | No. of Run Capacitors   |       |  |  |  |    |  |  |

PERFORMANCE DATA:

|                   |                  |  |  |  |  |  |  |  |
|-------------------|------------------|--|--|--|--|--|--|--|
| HP:               |                  |  |  |  |  |  |  |  |
| Poles:            |                  |  |  |  |  |  |  |  |
| Volts:            |                  |  |  |  |  |  |  |  |
| HZ:               |                  |  |  |  |  |  |  |  |
| Efficiency:       | @ Rated Load     |  |  |  |  |  |  |  |
| Power Factor:     | @ Rated Load     |  |  |  |  |  |  |  |
| Amps:             | @ No Load        |  |  |  |  |  |  |  |
|                   | @ Rated Load     |  |  |  |  |  |  |  |
|                   | @ Service Factor |  |  |  |  |  |  |  |
|                   | @ Locked Rotor   |  |  |  |  |  |  |  |
| Torques:          | @ Rated Load     |  |  |  |  |  |  |  |
|                   | Locked Rotor     |  |  |  |  |  |  |  |
|                   | Pull-Up          |  |  |  |  |  |  |  |
|                   | Rated Load       |  |  |  |  |  |  |  |
|                   | Service Factor   |  |  |  |  |  |  |  |
| Watts:            | @ Rated Load     |  |  |  |  |  |  |  |
| Temperature Rise: | @ Rated Load     |  |  |  |  |  |  |  |
|                   | @ Service Factor |  |  |  |  |  |  |  |

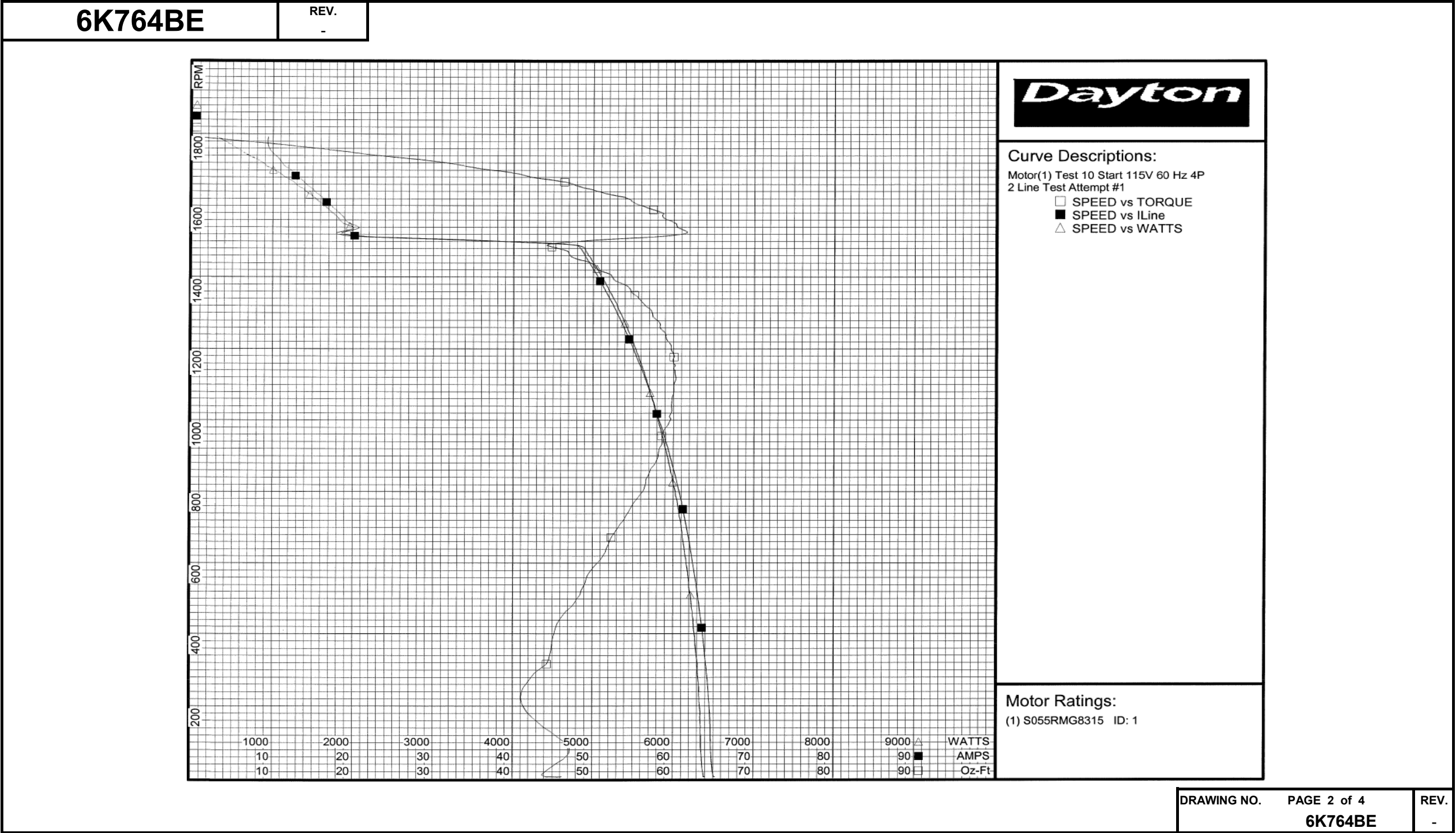
DRAWING NO.    PAGE 1 REV.  
6K764BE        -

# Performance Data



|                              |  |             |  |                 |       |                  |       |                   |       |                     |        |
|------------------------------|--|-------------|--|-----------------|-------|------------------|-------|-------------------|-------|---------------------|--------|
| 6K764BE                      |  | REV.<br>-   |  |                 |       |                  |       |                   |       |                     |        |
| Dayton Manufacturing Company |  |             |  |                 |       |                  |       |                   |       |                     |        |
| Motor Description            |  |             |  | Test Conditions |       |                  |       |                   |       |                     |        |
| Model:                       |  | S055RMG8315 |  | Test Type:      |       | Start            |       | Run Cap:          |       | 0                   |        |
| Motor ID:                    |  | 1           |  | Test Number:    |       | 10               |       | Start Cap:        |       | 0µfd                |        |
| Poles:                       |  | 4           |  | Poles:          |       | 4                |       |                   |       |                     |        |
| Volts:                       |  | 115         |  | Volts:          |       | 115              |       | Tested:           |       | 3/3/2012 6:55:13 AM |        |
| Frequency:                   |  | 60          |  | Hz:             |       | 60               |       |                   |       |                     |        |
| HP:                          |  | 1/2         |  | Rotation:       |       |                  |       | Gear Ratio:       |       | 1:1                 |        |
| Speed:                       |  | 1725        |  | Special Cond:   |       | 2 Line Test      |       | Bearing Friction: |       | -0.42 Oz-Ft         |        |
| Phase:                       |  | 1           |  | Speed Conn:     |       |                  |       | Windage Torque:   |       | -1.67 Oz-Ft         |        |
| Protector:                   |  | NONE        |  | TestBoard:      |       | Amps Performance |       | Fixture #1        |       |                     |        |
| Special Points               |  |             |  | Vline           | Iline | Watts            | Speed | Tq (Oz-ft)        | HP    | Eff (%)             | PF (%) |
|                              |  |             |  | 115.0           | 65.18 | 6389             | 4     | 46.17             | 0.002 | 0.0                 | 85.2   |
|                              |  |             |  | 115.0           | 64.80 | 6360             | 40    | 45.45             | 0.022 | 0.3                 | 85.4   |
|                              |  |             |  | 115.0           | 64.53 | 6341             | 183   | 41.85             | 0.091 | 1.1                 | 85.4   |
| PUT OZ-FT                    |  |             |  | 115.0           | 64.41 | 6324             | 224   | 41.00             | 0.109 | 1.3                 | 85.4   |
|                              |  |             |  | 115.0           | 64.06 | 6305             | 316   | 44.30             | 0.167 | 2.0                 | 85.6   |
|                              |  |             |  | 115.0           | 63.46 | 6254             | 440   | 45.92             | 0.241 | 2.9                 | 85.7   |
|                              |  |             |  | 115.0           | 62.76 | 6193             | 556   | 49.23             | 0.326 | 3.9                 | 85.8   |
|                              |  |             |  | 115.0           | 61.98 | 6122             | 662   | 52.11             | 0.411 | 5.0                 | 85.9   |
|                              |  |             |  | 115.0           | 61.11 | 6054             | 762   | 54.90             | 0.498 | 6.1                 | 86.1   |
|                              |  |             |  | 115.0           | 60.13 | 5969             | 853   | 57.02             | 0.579 | 7.2                 | 86.3   |
|                              |  |             |  | 115.0           | 59.07 | 5882             | 939   | 58.65             | 0.656 | 8.3                 | 86.6   |
|                              |  |             |  | 115.0           | 57.99 | 5791             | 1018  | 59.65             | 0.723 | 9.3                 | 86.8   |
|                              |  |             |  | 115.0           | 56.89 | 5695             | 1091  | 60.01             | 0.780 | 10.2                | 87.1   |
|                              |  |             |  | 115.0           | 55.74 | 5594             | 1159  | 59.97             | 0.827 | 11.0                | 87.3   |
|                              |  |             |  | 115.0           | 54.60 | 5497             | 1221  | 59.26             | 0.862 | 11.7                | 87.5   |
|                              |  |             |  | 115.0           | 53.43 | 5380             | 1279  | 58.05             | 0.884 | 12.3                | 87.6   |
|                              |  |             |  | 115.0           | 52.26 | 5274             | 1331  | 55.98             | 0.887 | 12.6                | 87.7   |
|                              |  |             |  | 115.0           | 51.08 | 5159             | 1380  | 53.82             | 0.884 | 12.8                | 87.8   |
|                              |  |             |  | 115.0           | 49.95 | 5047             | 1424  | 50.31             | 0.853 | 12.6                | 87.9   |
|                              |  |             |  | 115.0           | 48.83 | 4932             | 1465  | 46.95             | 0.819 | 12.4                | 87.8   |
|                              |  |             |  | 115.0           | 33.71 | 3270             | 1503  | 50.45             | 0.903 | 20.6                | 84.4   |
|                              |  |             |  | 115.0           | 20.67 | 1995             | 1540  | 60.38             | 1.107 | 41.4                | 83.9   |
|                              |  |             |  | 115.0           | 18.68 | 1791             | 1571  | 58.57             | 1.095 | 45.6                | 83.4   |
|                              |  |             |  | 115.0           | 17.30 | 1646             | 1600  | 55.94             | 1.066 | 48.3                | 82.7   |
|                              |  |             |  | 115.0           | 15.98 | 1496             | 1626  | 53.16             | 1.029 | 51.3                | 81.4   |
|                              |  |             |  | 115.0           | 14.73 | 1347             | 1650  | 48.76             | 0.958 | 53.1                | 79.5   |
|                              |  |             |  | 115.0           | 13.54 | 1199             | 1673  | 44.23             | 0.881 | 54.8                | 77.0   |
|                              |  |             |  | 115.0           | 12.44 | 1057             | 1695  | 39.03             | 0.788 | 55.6                | 73.9   |
|                              |  |             |  | 115.0           | 11.28 | 900              | 1715  | 33.17             | 0.677 | 56.1                | 69.4   |
|                              |  |             |  | 115.0           | 10.62 | 752              | 1734  | 25.72             | 0.531 | 52.7                | 61.6   |
|                              |  |             |  | 115.0           | 9.72  | 599              | 1753  | 18.26             | 0.381 | 47.5                | 53.6   |
|                              |  |             |  | 115.0           | 9.37  | 460              | 1771  | 10.35             | 0.218 | 35.4                | 42.7   |
|                              |  |             |  | 115.0           | 9.39  | 312              | 1790  | 0.97              | 0.021 | 4.9                 | 28.9   |
|                              |  |             |  | 115.0           | 9.42  | 297              | 1792  | 0.00              | 0.000 | 0.0                 | 27.5   |
| DRAWING NO. PAGE 1 of 4      |  |             |  |                 |       |                  |       |                   |       |                     |        |
| 6K764BE                      |  |             |  |                 |       |                  |       |                   |       |                     |        |
| REV.                         |  |             |  |                 |       |                  |       |                   |       |                     |        |

Performance Data



Dayton Electric Mfg. Co. Lake Forest, IL 60045 USA

# Performance Data



|                              |             |           |       |                 |                  |       |                   |                     |
|------------------------------|-------------|-----------|-------|-----------------|------------------|-------|-------------------|---------------------|
| 6K764BE                      |             | REV.<br>- |       |                 |                  |       |                   |                     |
| Dayton Manufacturing Company |             |           |       |                 |                  |       |                   |                     |
| Motor Description            |             |           |       | Test Conditions |                  |       |                   |                     |
| Model:                       | S055RMG8315 |           |       | Test Type:      | Run              |       | Run Cap:          | 0                   |
| Motor ID:                    | 1           |           |       | Test Number:    | 20               |       | Start Cap:        | 0µfd                |
| Poles:                       | 4           |           |       | Poles:          | 4                |       |                   |                     |
| Volts:                       | 115         |           |       | Volts:          | 115              |       | Tested:           | 3/3/2012 6:54:21 AM |
| Frequency:                   | 60          |           |       | Hz:             | 60               |       |                   |                     |
| HP:                          | 1/2         |           |       | Rotation:       |                  |       | Gear Ratio:       | 1:1                 |
| Speed:                       | 1725        |           |       | Special Cond:   |                  |       | Bearing Friction: | -0.42 Oz-Ft         |
| Phase:                       | 1           |           |       | Speed Conn:     |                  |       | Windage Torque:   | -1.73 Oz-Ft         |
| Protector:                   | NONE        |           |       | TestBoard:      | Amps Performance |       | Fixture #1        |                     |
| Special Points               | Vline       | Iline     | Watts | Speed           | Tq(Oz-ft)        | HP    | Eff(%)            | PF(%)               |
|                              | 115.0       | 9.60      | 273   | 1787            | 0.00             | 0.000 | 0.0               | 24.7                |
|                              | 115.0       | 9.56      | 424   | 1769            | 9.17             | 0.193 | 34.0              | 38.6                |
|                              | 115.0       | 9.83      | 605   | 1748            | 20.04            | 0.417 | 51.4              | 53.5                |
| 0.5 HP                       | 115.0       | 10.16     | 684   | 1740            | 24.14            | 0.500 | 54.5              | 58.5                |
| 24.4 OZ-FT                   | 115.0       | 10.19     | 690   | 1740            | 24.40            | 0.505 | 54.6              | 58.9                |
|                              | 115.0       | 10.74     | 785   | 1729            | 29.08            | 0.599 | 56.9              | 63.5                |
| 30 OZ-FT                     | 115.0       | 10.88     | 805   | 1727            | 30.00            | 0.617 | 57.1              | 64.3                |
| 1725 RPM                     | 115.0       | 11.00     | 820   | 1725            | 30.88            | 0.634 | 57.7              | 64.8                |
|                              | 115.0       | 11.64     | 929   | 1709            | 35.83            | 0.729 | 58.5              | 69.4                |
|                              | 115.0       | 12.93     | 1113  | 1688            | 43.46            | 0.873 | 58.5              | 74.8                |
|                              | 115.0       | 14.13     | 1283  | 1665            | 48.97            | 0.970 | 56.4              | 79.0                |
|                              | 115.0       | 15.51     | 1450  | 1639            | 53.92            | 1.052 | 54.1              | 81.3                |
|                              | 115.0       | 17.01     | 1616  | 1613            | 56.74            | 1.090 | 50.3              | 82.6                |
|                              | 115.0       | 18.52     | 1775  | 1584            | 60.38            | 1.139 | 47.9              | 83.3                |
|                              | 115.0       | 20.02     | 1930  | 1553            | 62.51            | 1.156 | 44.7              | 83.8                |
|                              | 115.0       | 21.53     | 2077  | 1519            | 63.28            | 1.144 | 41.1              | 83.9                |
| BDT OZ-FT                    | 115.0       | 22.16     | 2137  | 1505            | 64.11            | 1.149 | 40.1              | 83.8                |
|                              | 115.0       | 23.05     | 2219  | 1483            | 63.36            | 1.118 | 37.6              | 83.7                |
|                              | 115.0       | 24.57     | 2353  | 1443            | 63.08            | 1.083 | 34.3              | 83.3                |
|                              | 115.0       | 26.02     | 2480  | 1399            | 62.02            | 1.033 | 31.1              | 82.9                |
|                              | 115.0       | 27.41     | 2596  | 1351            | 59.55            | 0.958 | 27.5              | 82.3                |
|                              | 115.0       | 28.75     | 2704  | 1300            | 56.89            | 0.880 | 24.3              | 81.8                |
|                              | 115.0       | 30.04     | 2802  | 1243            | 53.63            | 0.794 | 21.1              | 81.1                |
|                              | 115.0       | 31.24     | 2888  | 1184            | 49.83            | 0.702 | 18.1              | 80.4                |
|                              | 115.0       | 32.36     | 2967  | 1117            | 45.84            | 0.610 | 15.3              | 79.7                |
|                              | 115.0       | 33.44     | 3033  | 1047            | 41.52            | 0.518 | 12.7              | 78.9                |
|                              | 115.0       | 34.38     | 3092  | 971             | 36.85            | 0.426 | 10.3              | 78.2                |
|                              | 115.0       | 35.24     | 3141  | 890             | 31.99            | 0.339 | 8.0               | 77.5                |
|                              | 115.0       | 63.77     | 6187  | 805             | 56.35            | 0.540 | 6.5               | 84.4                |
|                              | 115.0       | 64.31     | 6337  | 711             | 54.81            | 0.464 | 5.5               | 85.7                |
|                              | 115.0       | 64.82     | 6378  | 610             | 51.81            | 0.376 | 4.4               | 85.6                |
|                              | 115.0       | 65.08     | 6399  | 502             | 48.79            | 0.292 | 3.4               | 85.5                |
|                              | 115.0       | 65.29     | 6410  | 386             | 45.59            | 0.210 | 2.4               | 85.4                |
|                              | 115.0       | 65.30     | 6410  | 264             | 42.77            | 0.134 | 1.6               | 85.4                |
|                              | 115.0       | 65.20     | 6398  | 134             | 42.59            | 0.068 | 0.8               | 85.3                |

DRAWING NO.

PAGE 3 of 4

6K764BE

REV.

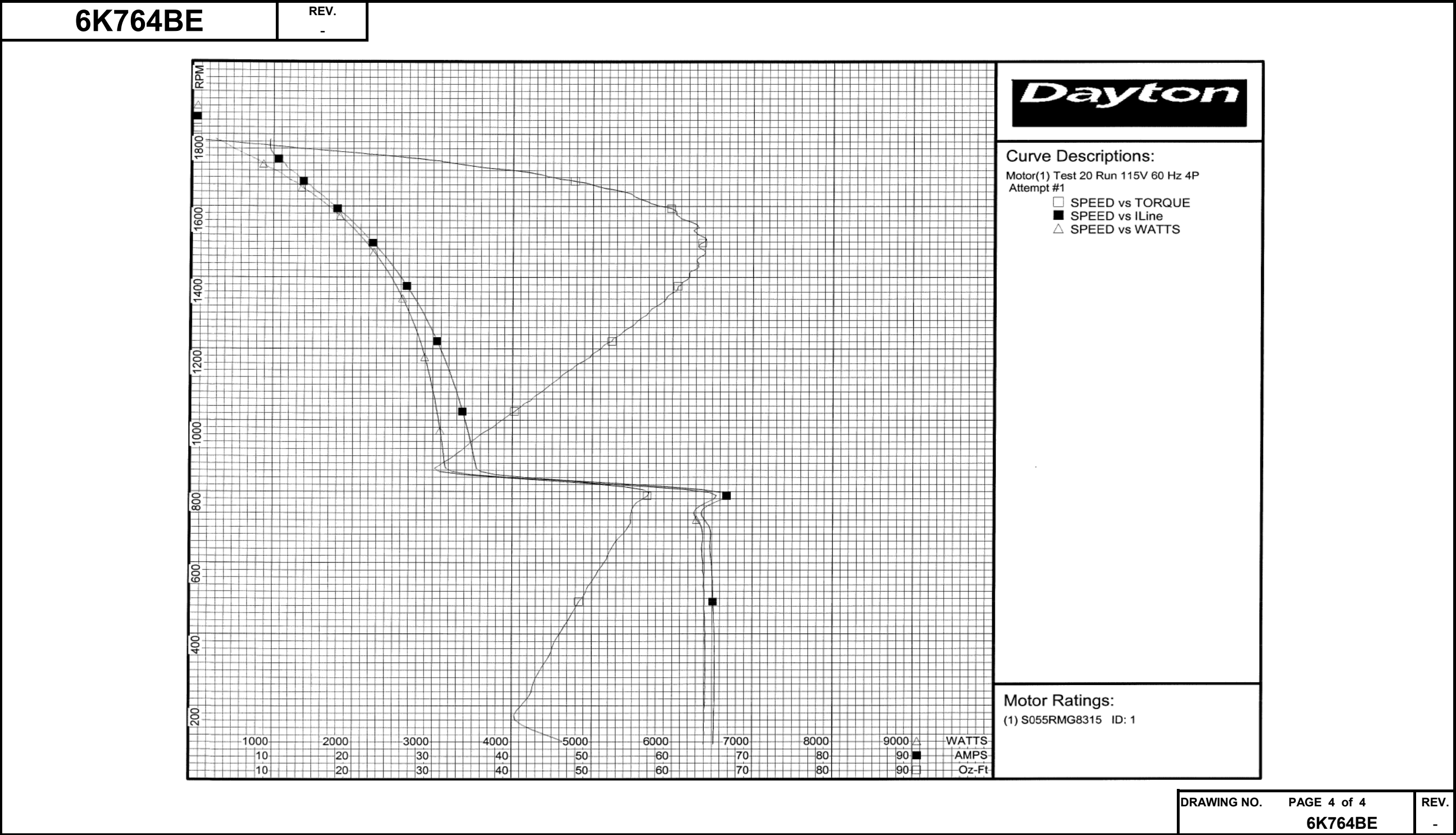
-

|             |             |      |
|-------------|-------------|------|
| DRAWING NO. | PAGE 3 of 4 | REV. |
| 6K764BE     |             | -    |

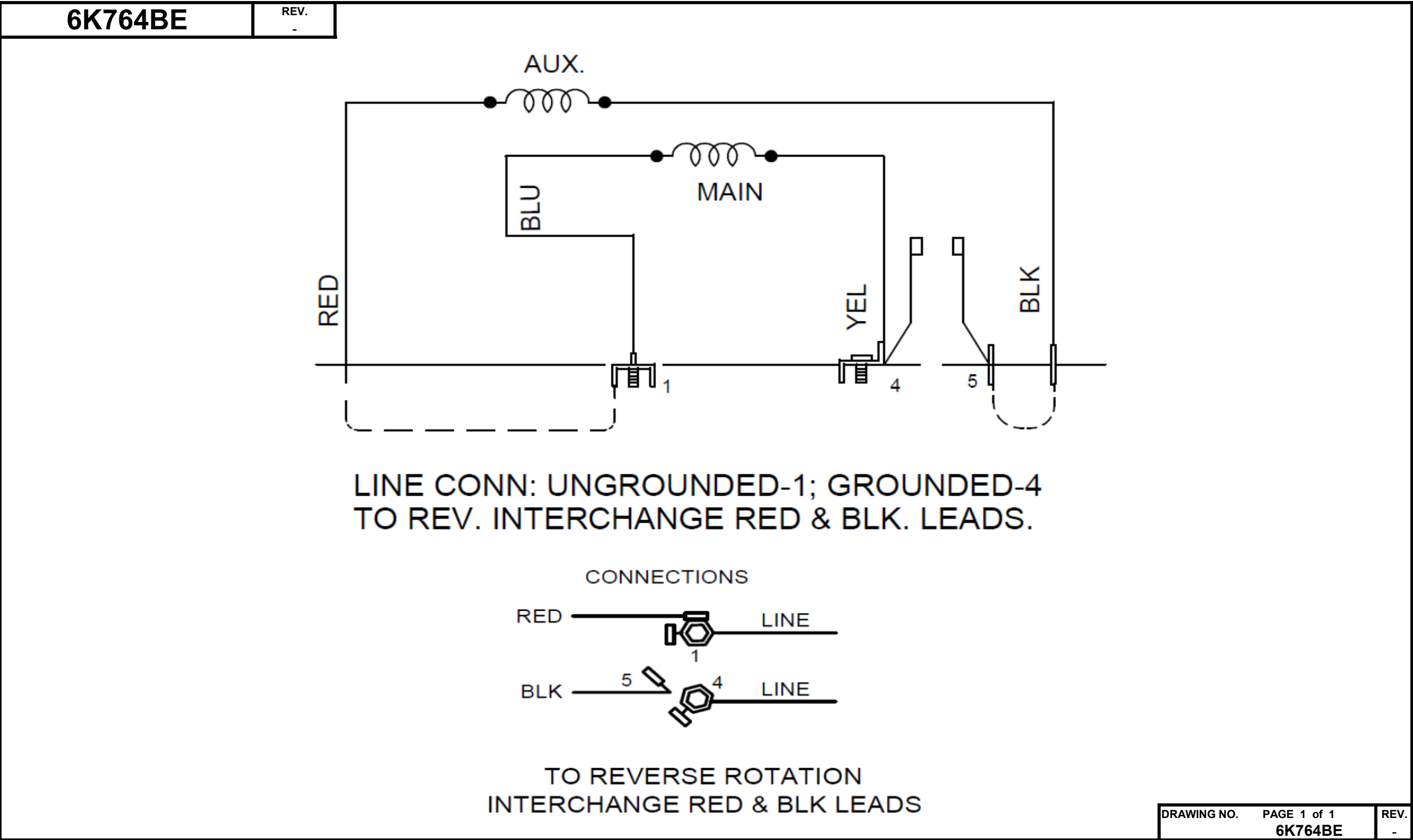
Dayton Electric Mfg. Co. Lake Forest, IL 60045 USA



Performance Data



Wiring Diagram



Dayton Electric Mfg. Co. Lake Forest, IL 60045 USA



Part  
No

**6K764BE**



# SPLIT PHASE MOTOR

**HP:** 1/2

**VOLTS:** 115

**AMPS:** 8.9

**RPM:** 1725



**DUTY:** CONT

**SF:** 1.25

**KVA CODE :** R

**MTR REF:** S55RLL-8342

**THERMALLY PROTECTED:** NONE

MFG. NO.  

**PH:** 1

**HZ:** 60

**FR:** 48Z

**INS CL:** F

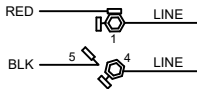
**AMB:** 40 °C

**SFA:** 9.6

**ENCL:** ODP

**Disconnect Power Before Making  
Any Electrical Connections or Changes**

## CONNECTIONS



**TO REVERSE ROTATION  
INTERCHANGE RED & BLK LEADS**



258501



E47479

Mfd for Dayton Electric Mfg. Co., Lake Forest, IL 60045 USA

Made in Mexico