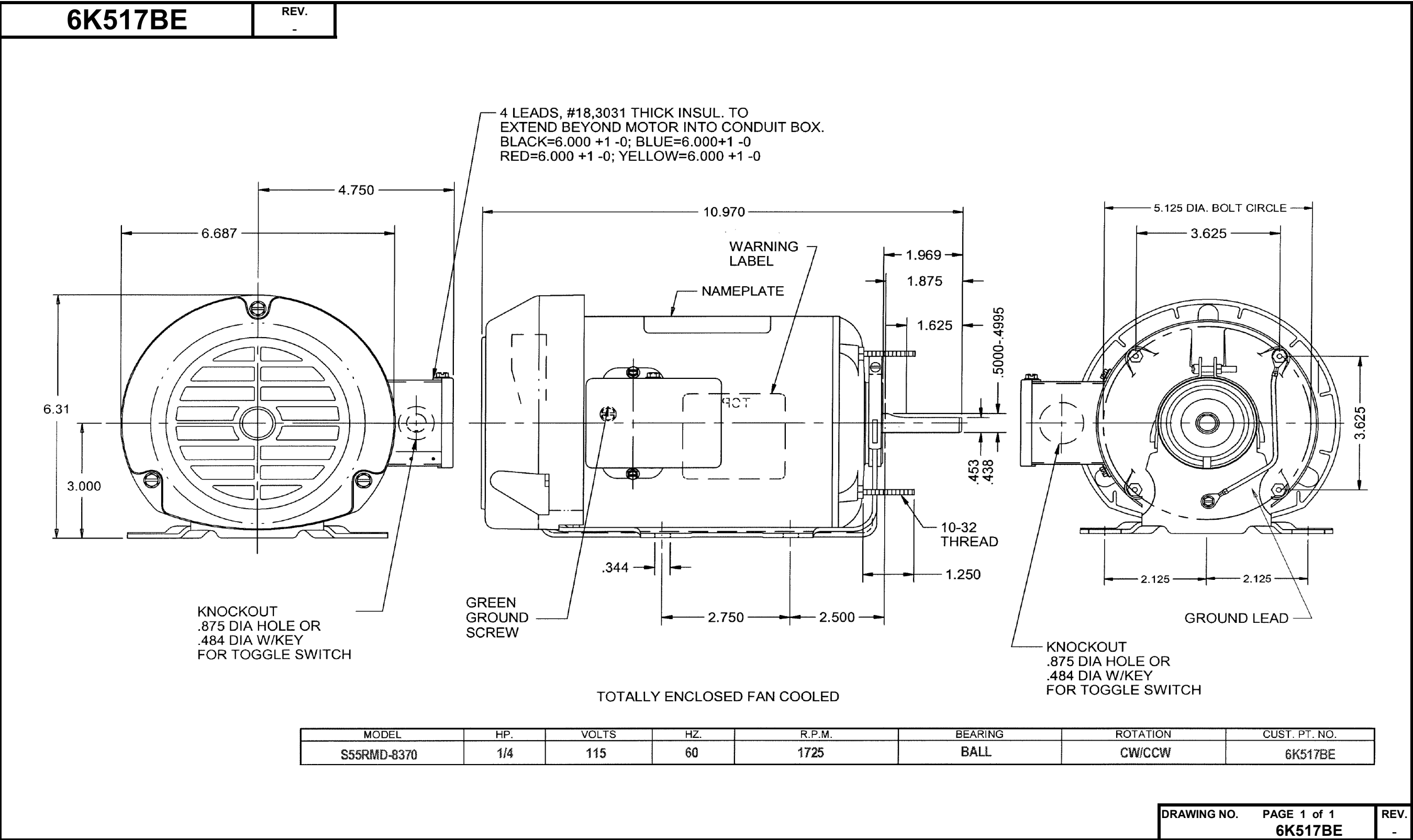


Dimensional Drawing



Dayton Electric Mfg. Co. Lake Forest, IL 60045 USA

Performance Data



6K517BE

REV.
-

MOTOR PERFORMANCE

HP:	1/4HP							
Poles:	4							
No. of Speeds:	1							
Volts:	115	115						
HZ:	60	60						
Service Factor:	1							
Efficiency:	@ Rated Load	55.2						
Power Factor:	@ Rated Load	60.4						
Amps:	@ No Load							
	@ Rated Load	4.9						
	@ Service Factor	N/A						
	@ Locked Rotor	42.71						
RPM:	@ Rated Load							
Ambient (°C):								
Altitude (FASL):								
Torques:	Breakdown	35.34						
	Locked Rotor	28.21						
	Pull-Up	26.69						
	Rated Load							
	Service Factor							
Watts:	Rated Load							
KVA Code:								
Temperature Rise:	@ Rated Load	59.8						
	@ Service Factor							
Thermal Protector:	Trip Temp (°C)							
Winding Material:	Start (Auxiliary)	Al						
	Run (Main)	Al						
Capacitor(s):	Start (MFD / Volts)	N/A						
	No. of Start Capacitors							
	Run (MFD / Volts)	N/A						
	No. of Run Capacitors							

LOW SPEED PERFORMANCE DATA:

HP:								
Poles:								
Volts:								
HZ:								
Efficiency:	@ Rated Load							
Power Factor:	@ Rated Load							
Amps:	@ No Load							
	@ Rated Load							
	@ Service Factor							
	@ Locked Rotor							
Torques:	@ Rated Load							
	Locked Rotor							
	Pull-Up							
	Rated Load							
	Service Factor							
Watts:	@ Rated Load							
Temperature Rise:	@ Rated Load							
	@ Service Factor							

DRAWING NO. PAGE 1 REV.
6K517BE -

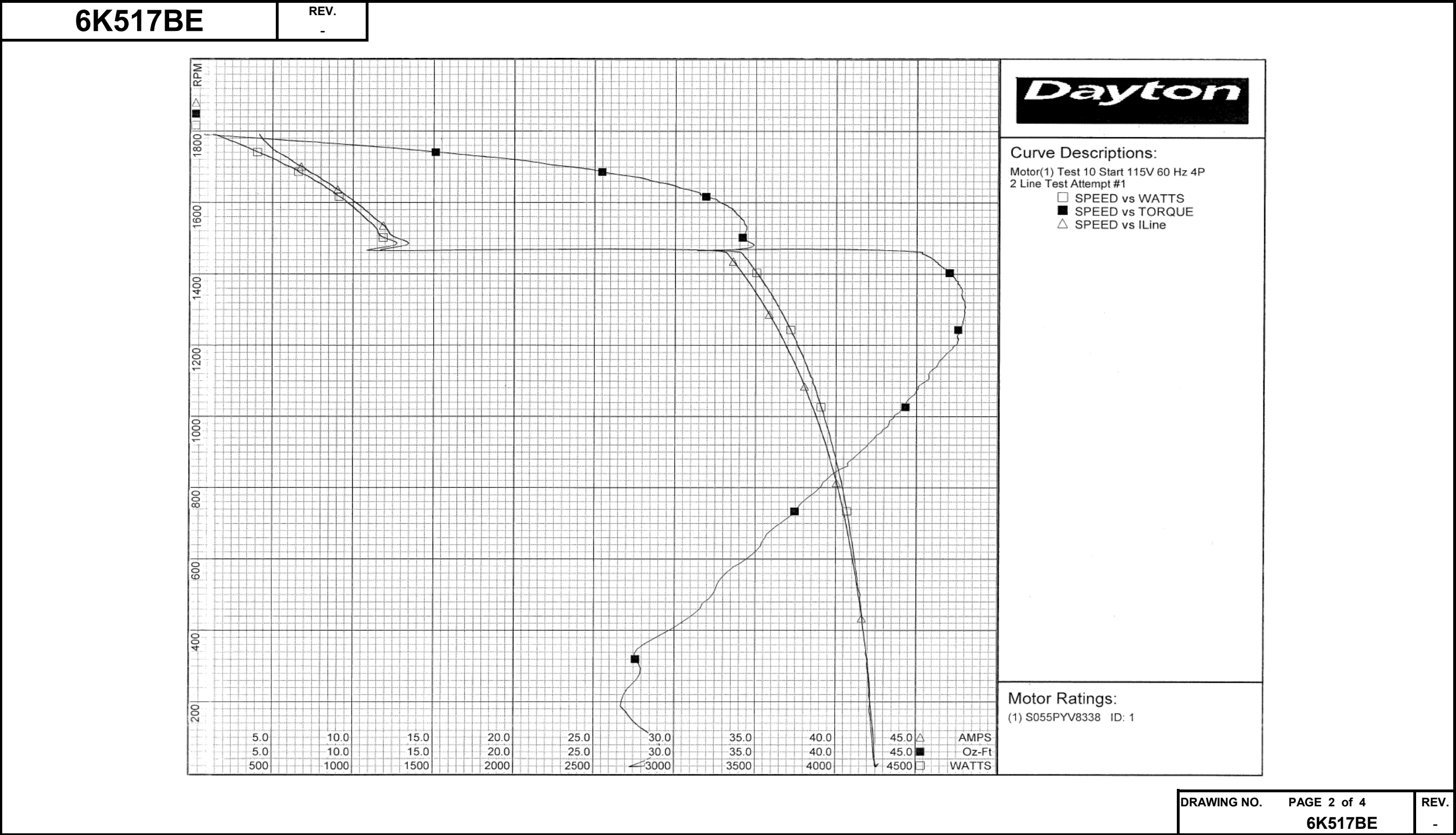
Performance Data



6K517BE		REV. -							
Dayton Manufacturing Company									
Motor Description				Test Conditions					
Model: S055PYV8338		Test Type: Start		Run Cap: 0					
Motor ID: 1		Test Number: 10		Start Cap: 0µfd					
Poles: 4		Poles: 4							
Volts: 115		Volts: 115		Tested: 4/26/2012 10:20:24 AM					
Frequency: 60		Hz: 60		Tested By: Sharp, Gerald					
HP: 1/4		Rotation:		Gear Ratio: 1:1					
Speed: 1725		Special Cond: 2 Line Test		Bearing Friction: -0.50 Oz-Ft					
Phase: 1		Speed Conn:		Windage Torque: -2.04 Oz-Ft					
Protector: NONE		TestBoard:		Amps Performance		Fixture #4			
Special Points	Vline (V)	Iline (A)	Watts	RPM	Tq (Oz-ft)	HP	Eff (%)	PF (%)	
	115.0	42.71	4266	24	28.21	0.008	0.1	86.9	
	115.0	42.47	4245	34	28.22	0.011	0.2	86.9	
	115.0	42.23	4212	174	26.99	0.056	1.0	86.7	
PUT OZ-FT	115.0	42.20	4214	188	26.69	0.060	1.1	86.8	
	115.0	41.93	4188	334	27.54	0.110	2.0	86.9	
	115.0	41.47	4152	488	32.12	0.187	3.4	87.0	
	115.0	40.94	4109	626	35.13	0.262	4.8	87.3	
	115.0	40.42	4065	744	37.62	0.333	6.1	87.5	
	115.0	39.83	4016	851	40.23	0.408	7.6	87.7	
	115.0	39.17	3962	947	42.50	0.479	9.0	88.0	
	115.0	38.48	3902	1034	44.29	0.545	10.4	88.2	
	115.0	37.78	3840	1113	45.74	0.606	11.8	88.4	
	115.0	37.05	3777	1184	47.03	0.663	13.1	88.6	
	115.0	36.30	3710	1249	47.63	0.708	14.2	88.9	
	115.0	35.57	3641	1307	48.00	0.747	15.3	89.0	
	115.0	34.82	3572	1360	47.78	0.774	16.2	89.2	
	115.0	34.08	3502	1408	46.96	0.787	16.8	89.3	
	115.0	33.34	3426	1450	45.66	0.788	17.2	89.4	
	115.0	12.37	1149	1466	31.70	0.553	35.9	80.8	
	115.0	12.43	1170	1507	34.16	0.613	39.1	81.9	
	115.0	11.44	1084	1553	34.15	0.631	43.4	82.4	
	115.0	10.46	993	1590	33.26	0.630	47.3	82.6	
	115.0	9.55	905	1619	31.81	0.613	50.6	82.4	
	115.0	8.72	821	1646	30.02	0.588	53.4	81.9	
	115.0	7.95	738	1669	27.93	0.555	56.1	80.8	
	115.0	7.19	654	1690	25.27	0.508	58.0	79.0	
	115.0	6.49	567	1708	22.02	0.448	58.9	76.0	
	115.0	5.90	488	1726	18.68	0.384	58.7	71.9	
	115.0	5.22	399	1743	14.77	0.306	57.3	66.4	
	115.0	4.78	316	1760	10.54	0.221	52.0	57.6	
	115.0	4.41	224	1776	5.45	0.115	38.4	44.2	
	115.0	4.18	130	1792	0.00	0.000	0.0	27.0	
						DRAWING NO.	PAGE 1 of 4		REV.
						6K517BE		-	

Dayton Electric Mfg. Co. Lake Forest, IL 60045 USA

Performance Data



Dayton Electric Mfg. Co. Lake Forest, IL 60045 USA

Performance Data



6K517BE		REV. -						
Dayton Manufacturing Company								
Motor Description				Test Conditions				
Model: S055PYV8338		Test Type: Run		Run Cap: 0				
Motor ID: 1		Test Number: 20		Start Cap: 0µfd				
Poles: 4		Poles: 4						
Volts: 115		Volts: 115		Tested: 4/26/2012 10:13:30 AM				
Frequency: 60		Hz: 60		Tested By: Sharp, Gerald				
HP: 1/4		Rotation:		Gear Ratio: 1:1				
Speed: 1725		Special Cond:		Bearing Friction: -0.65 Oz-Ft				
Phase: 1		Speed Conn:		Windage Torque: -2.24 Oz-Ft				
Protector: NONE		TestBoard:		Amps Performance		Fixture #4		
Special Points	Vline (V)	Iline (A)	Watts	RPM	Tq (Oz-ft)	HP	Eff (%)	PF (%)
	115.0	4.02	119.9	1789	0.00	0.000	0.0	25.9
	115.0	4.14	192.9	1777	4.29	0.091	35.1	40.5
	115.0	4.46	264.9	1766	8.20	0.172	48.5	51.6
0.25 HP	115.0	4.86	337.6	1752	11.99	0.250	55.2	60.4
12.2 OZ-FT	115.0	4.89	341.9	1751	12.20	0.254	55.5	60.8
	115.0	4.91	346.2	1750	12.41	0.259	55.7	61.3
	115.0	5.42	435.6	1734	16.82	0.347	59.4	69.9
1725 RPM	115.0	5.75	483.4	1725	18.92	0.389	60.0	73.1
	115.0	6.14	531.5	1716	20.90	0.427	59.9	75.2
	115.0	6.85	617.6	1694	24.24	0.489	59.0	78.4
	115.0	7.85	731.7	1671	28.02	0.557	56.8	81.0
	115.0	8.80	834.4	1645	30.89	0.605	54.1	82.4
	115.0	9.76	931.3	1615	33.04	0.635	50.9	83.0
	115.0	10.77	1029.1	1581	34.48	0.649	47.0	83.1
	115.0	11.75	1118.7	1546	35.16	0.647	43.2	82.8
BDT OZ-FT	115.0	12.37	1173.0	1520	35.34	0.640	40.7	82.5
	115.0	12.68	1199.5	1507	35.22	0.632	39.3	82.2
	115.0	13.54	1271.8	1465	34.68	0.605	35.5	81.7
	115.0	14.33	1331.6	1422	33.76	0.571	32.0	80.8
	115.0	15.07	1386.7	1375	32.26	0.528	28.4	80.0
	115.0	15.73	1431.4	1327	30.93	0.489	25.5	79.1
	115.0	16.33	1472.1	1276	29.20	0.444	22.5	78.4
	115.0	16.90	1507.0	1223	27.36	0.398	19.7	77.5
	115.0	17.40	1536.6	1166	25.20	0.350	17.0	76.8
	115.0	17.87	1563.3	1104	22.92	0.301	14.4	76.1
	115.0	18.30	1584.7	1040	20.63	0.255	12.0	75.3
	115.0	18.68	1603.7	971	18.18	0.210	9.8	74.6
	115.0	19.04	1619.2	898	15.76	0.168	7.8	74.0
	115.0	19.34	1632.3	820	13.27	0.130	5.9	73.4
	115.0	19.62	1643.3	737	10.60	0.093	4.2	72.8
	115.0	19.87	1650.7	649	8.02	0.062	2.8	72.3
	115.0	20.05	1656.1	557	6.20	0.041	1.9	71.8
	115.0	20.19	1660.4	462	4.68	0.026	1.2	71.5
	115.0	20.30	1664.2	359	2.32	0.010	0.4	71.3
	115.0	20.36	1666.6	250	0.91	0.003	0.1	71.2
	115.0	20.38	1663.7	135	-0.77	-0.001	0.0	71.0

DRAWING NO. 6K517BE

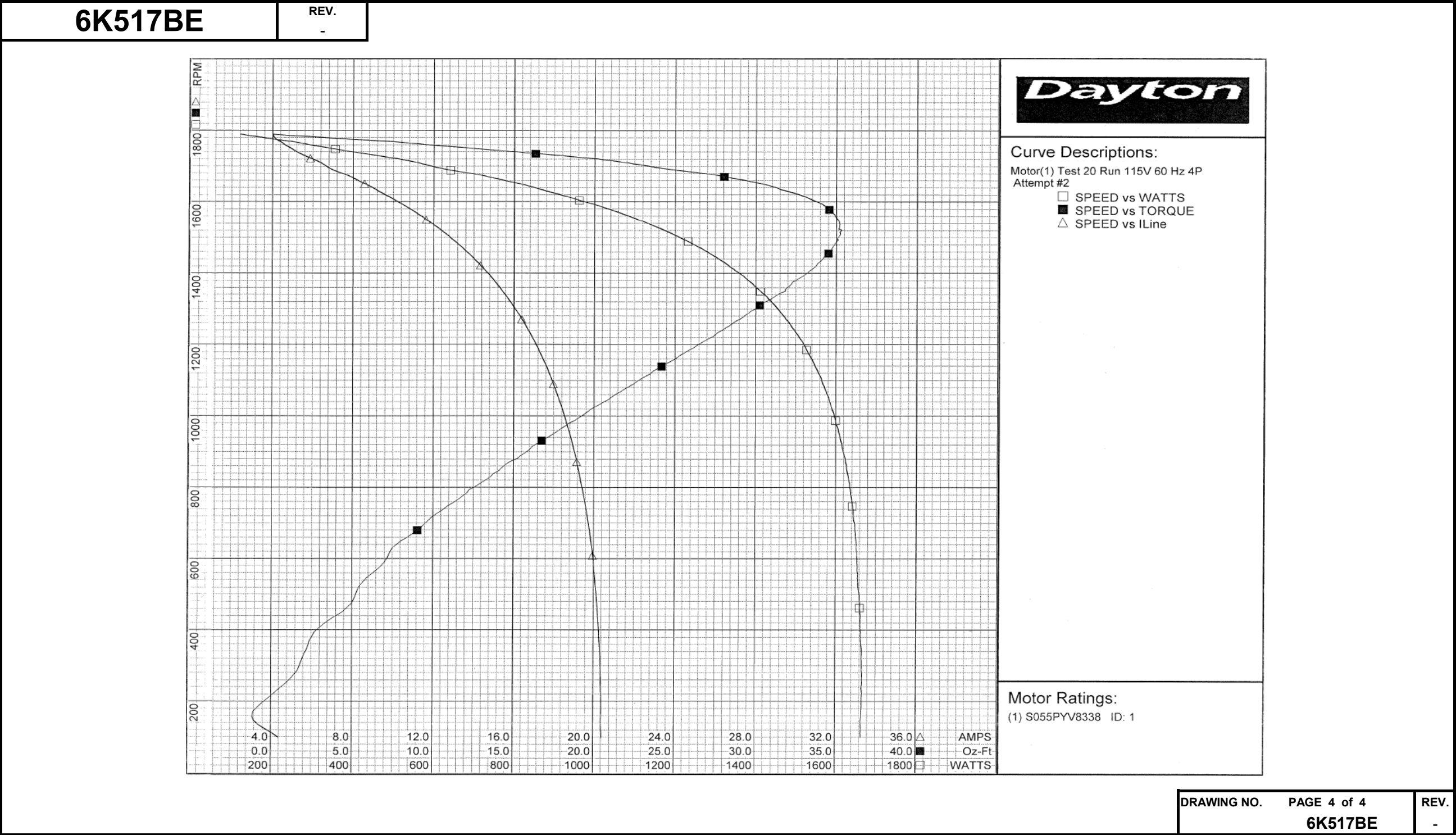
PAGE 3 of 4

REV. -

DRAWING NO.	PAGE 3 of 4	REV.
	6K517BE	-

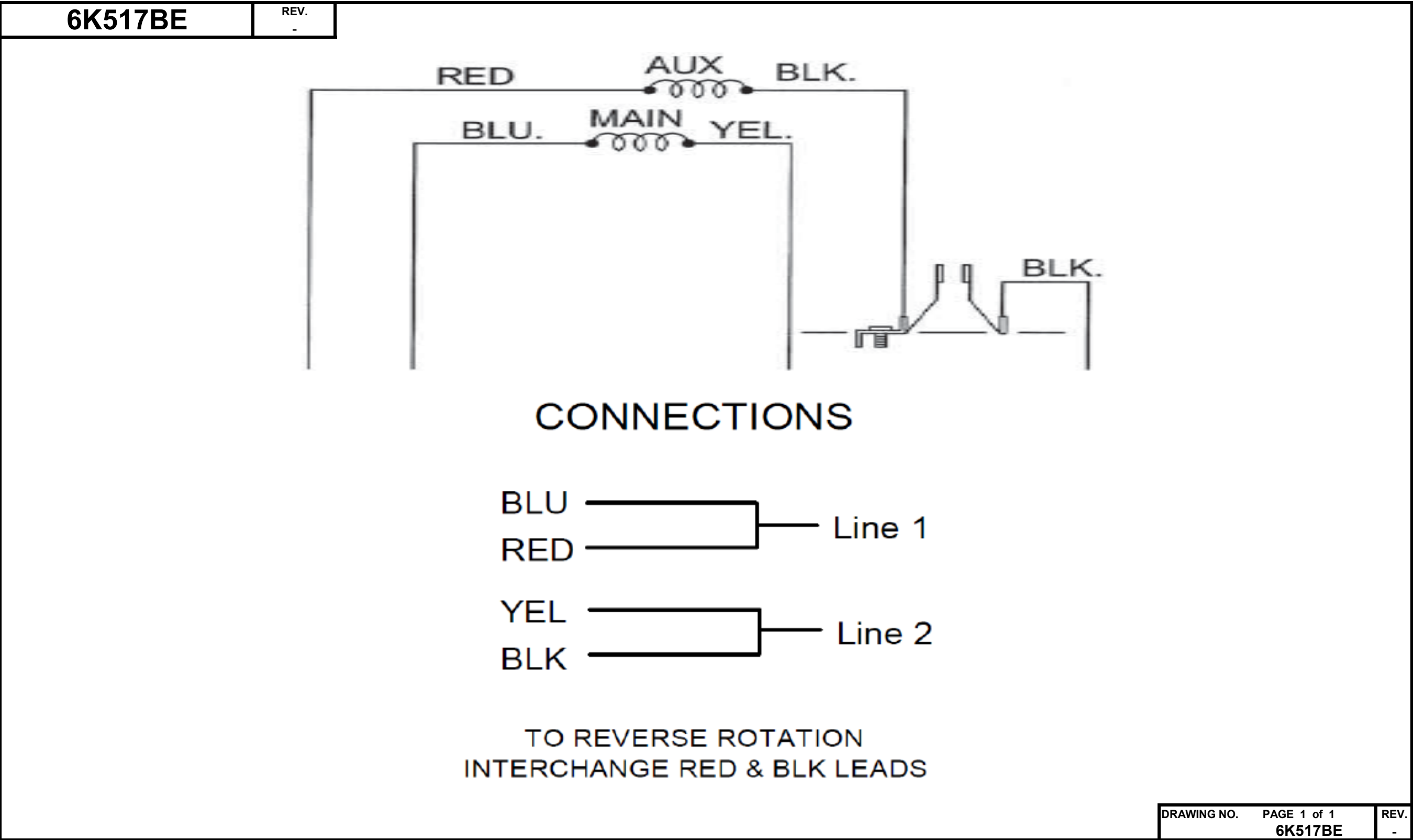
Dayton Electric Mfg. Co. Lake Forest, IL 60045 USA

Performance Data



Dayton Electric Mfg. Co. Lake Forest, IL 60045 USA

Wiring Diagram





Part
No

6K517BE

SPLIT PHASE MOTOR



HP: 1/4

PH: 1

VOLTS: 115

HZ: 60

AMPS: 4.9

FR: 48Z

RPM: 1725

INS CL: B

DUTY: CONT

AMB: 40 °C

SF: 1.0

SFA:

KVA CODE : T

ENCL: TEFC

MTR REF: S55RMD-8370

THERMALLY PROTECTED: NONE

PROT. CODE ☐ ☐ MFG. NO. ☐ ☐

Disconnect Power Before Making
Any Electrical Connections or Changes

CONNECTIONS

BLU ☐ — Line 1

RED ☐ —

YEL ☐ — Line 2

BLK ☐ —

TO REVERSE ROTATION
INTERCHANGE RED & BLK LEADS



258501



E47479

Mfd for Dayton Electric Mfg. Co., Lake Forest, IL 60045 USA

Made in Mexico