

Dimensional Drawing



6K311BG

REV.
-

VAR	MODEL	CUST. PT. NO.	A	B	C	D	HP	VOLTS	SF	AMPS	HZ	RPM	CONN VOLTS	PROT.	DESCRIPTION / REMARKS
001	T63YZBBP-2236	6K311BG	14.25	-----	-----	-----	1 1/2	115/230	1.15	16.2/8.1	60	1725	---	MANUAL	145T, TEFC, GREEN

Front View Dimensions:

- Overall Width: $A \pm .060$
- Overall Height: $3.500^{+0.000}_{-.060}$
- Knockout .875 DIA.
- Knockout 1.125 DIA.
- .484 DIA. KNOCKOUT W/KEY .031 DEEP
- Knockout .625 DIA.
- WARNING LABEL
- NAMEPLATE
- 2.310 $\pm .031$
- 2.25
- 1.44
- .8750
- .8745
- .771
- WASHER SLINGER
- MANUAL RESET PROTECTOR
- PUSH TO RESET
- 9.15
- 5.81
- 25°
- 32°
- START CAP
- 8.25
- 8.50
- 4.88 FROM CENTER OF .344 DIA SLOT
- 5.50 FROM CENTERS OF .344 DIA. HOLES
- DRAIN PLUG

Side View Dimensions:

- 3.00
- 5.00
- 4.00
- 5.00
- .344 SLOT (6)
- 2.75
- 2.25
- .344 DIA. (6)
- 1.25
- DRAIN HOLE AND PLUG REQUIRED BOTH ENDS

End View (SLOT VIEW (6)) Dimensions:

- 1.25

CONNECTIONS:

UNGROUND SIDE OF LINE

LOW VOLT LINE

HIGH VOLT LINE

MOTOR IS CCW ROTATION LEAD END TO REVERSE ROTATION INTERCHANGE RED AND BLACK LEADS

ROTATION: REVERSIBLE

NOTE: KEY AND INSTRUCTION BOOK SHIPPED AS A KIT IN A PLASTIC BAG

DRAWING NO.	PAGE 1 of 1	REV.
6K311BG		-

6K311BG

REV.

-

MOTOR PERFORMANCE

HP:	1 1/2							
Poles:	4							
No. of Speeds:	1							
Volts:	115 / 230	115	230					
HZ:	60	60	60					
Service Factor:	1.15							
Efficiency:	@ Rated Load	80.9	80.2					
Power Factor:	@ Rated Load	93.1	92.9					
Amps:	@ No Load							
	@ Rated Load	13.2	6.6					
	@ Service Factor	15	7.6					
	@ Locked Rotor	104.1	52					
RPM:	@ Rated Load							
Ambient (°C):								
Altitude (FASL):								
Torques:	Breakdown	172.1	177.1					
	Locked Rotor	221.1	191					
	Pull-Up	208.9	189.4					
	Rated Load	73	73					
	Service Factor	84	84					
Watts:	Rated Load	1406	1405					
KVA Code:								
Temperature Rise:	@ Rated Load	57.5	56.7					
	@ Service Factor	71.7	70.9					
Thermal Protector:	Trip Temp (°C)	154.5	159.3					
Winding Material:	Start (Auxiliary)	Cu	Cu					
	Run (Main)	Cu	Cu					
Capacitor(s):	Start (MFD / Volts)	896.5 mfd, 125v						
	No. of Start Capacitors							
	Run (MFD / Volts)	50 mfd, 370v						
	No. of Run Capacitors							

LOW SPEED PERFORMANCE DATA:

HP:								
Poles:								
Volts:								
HZ:								
Efficiency:	@ Rated Load							
Power Factor:	@ Rated Load							
Amps:	@ No Load							
	@ Rated Load							
	@ Service Factor							
	@ Locked Rotor							
Torques:	@ Rated Load							
	Locked Rotor							
	Pull-Up							
	Rated Load							
	Service Factor							
Watts:	@ Rated Load							
Temperature Rise:	@ Rated Load							
	@ Service Factor							

 DRAWING NO. PAGE 1 REV.
 6K311BG -

Performance Data



6K311BG		REV. -											
Dayton Manufacturing Company													
Motor Description				Test Conditions									
Model: T063BBP2236 6K311				Test Type: Start		Run Cap: 50 mFd, 370V							
Motor ID:				Test Number: 30		Start Cap: 896.5 mFd, 125V							
Poles: 4				Poles: 4		Environment:							
Volts: 115/230				Volts: 115		Tested: 6/26/2014 2:52:51 PM							
Frequency: 60				Hz: 60		Tested By: Sharp, Gerald							
HP: 1.5				Rotation:		Gear Ratio: 1:1							
Speed: 1725				Special Cond: 2 Line Start		Bearing Friction: 0.00 Oz-Ft							
Phase: 1				Speed Conn:		Windage Torque: -2.08 Oz-Ft							
Protector: CED				TestBoard: Amps Performance		Fixture #2							
Special Points	Vline(V)	Vaux(V)	Vcap(V)	Iline(A)	Imain(A)	Iaux(A)	Watts	RPM	Tq(Oz-ft)	HP	Eff(%)	PF(%)	Cap
	115.0	128.7	114.0	104.07	81.51	37.62	10629	13	221.1	0.034	0.2	88.8	875.6
	115.0	129.3	113.0	104.01	81.35	37.28	10613	55	220.6	0.146	1.0	88.7	875.1
PUT OZ-FT	115.0	130.1	111.2	103.65	80.67	36.66	10574	169	208.9	0.420	3.0	88.7	874.8
	115.0	130.4	110.6	103.45	80.36	36.38	10571	210	212.2	0.531	3.7	88.9	872.7
	115.0	132.1	107.6	102.84	79.17	35.38	10525	357	230.5	0.980	6.9	89.0	871.9
	115.0	133.2	104.0	101.60	77.88	34.07	10399	488	237.4	1.379	9.9	89.0	868.8
	115.0	135.4	99.6	101.38	77.57	32.51	10294	609	235.5	1.708	12.4	88.3	866.2
	115.0	141.7	98.3	103.62	77.97	32.05	10537	721	228.3	1.959	13.9	88.4	865.2
	115.0	147.4	98.2	104.53	77.06	32.04	10730	824	229.4	2.250	15.6	89.3	865.7
	115.0	151.7	97.3	104.29	75.66	31.78	10777	921	234.9	2.575	17.8	89.9	866.4
	115.0	156.0	96.6	103.78	74.24	31.52	10778	1008	235.7	2.827	19.6	90.3	866.0
	115.0	160.1	95.9	103.09	72.88	31.26	10753	1088	232.7	3.014	20.9	90.7	864.7
	115.0	164.5	95.0	102.25	71.60	31.04	10719	1161	226.5	3.131	21.8	91.2	866.2
	115.0	168.8	95.0	101.45	70.42	30.99	10655	1228	218.0	3.188	22.3	91.3	865.8
	115.0	173.6	95.5	100.63	69.25	31.22	10604	1288	208.2	3.193	22.5	91.6	866.9
	115.0	178.5	96.7	99.83	68.15	31.65	10559	1344	194.4	3.109	22.0	92.0	867.9
	115.0	183.5	98.6	98.97	67.06	32.32	10507	1394	178.1	2.956	21.0	92.3	869.9
	115.0	188.6	100.7	98.17	66.06	33.16	10455	1440	161.0	2.759	19.7	92.6	873.5
	115.0	193.8	103.6	97.40	65.10	34.21	10411	1481	143.2	2.526	18.1	93.0	875.6
	115.0	198.7	106.6	96.62	64.19	35.35	10352	1519	121.3	2.193	15.8	93.2	879.2
	115.0	147.3	125.5	67.94	54.80	18.13	7018	1557	146.2	2.710	28.8	89.8	383.4
	115.0	120.0	144.3	36.74	35.06	3.37	3792	1598	156.9	2.984	58.7	89.8	62.0
	115.0	124.4	150.8	32.26	30.91	2.94	3365	1626	150.1	2.904	64.4	90.7	51.7
	115.0	129.9	157.0	28.75	27.32	3.02	3017	1651	138.3	2.719	67.2	91.3	51.0
	115.0	135.6	163.3	25.31	23.80	3.14	2675	1674	129.1	2.572	71.7	91.9	51.0
	115.0	140.9	169.6	21.94	20.35	3.25	2327	1696	113.2	2.286	73.3	92.3	50.9
	115.0	146.1	176.1	18.54	16.92	3.36	1972	1718	99.9	2.042	77.2	92.5	50.7
	115.0	152.2	183.5	14.85	13.30	3.51	1570	1738	80.5	1.664	79.1	91.9	50.7
	115.0	156.8	190.0	11.59	10.29	3.62	1207	1756	60.6	1.266	78.3	90.5	50.5
	115.0	162.0	197.9	7.86	7.47	3.78	751	1777	34.2	0.724	71.9	83.1	50.6
	115.0	166.7	206.7	4.98	6.51	3.96	334	1796	8.3	0.177	39.5	58.4	50.8
	115.0	167.9	208.6	4.68	6.70	4.00	254	1799	2.9	0.062	18.2	47.2	50.9
DRAWING NO. PAGE 1 of 8												REV.	
6K311BG												-	

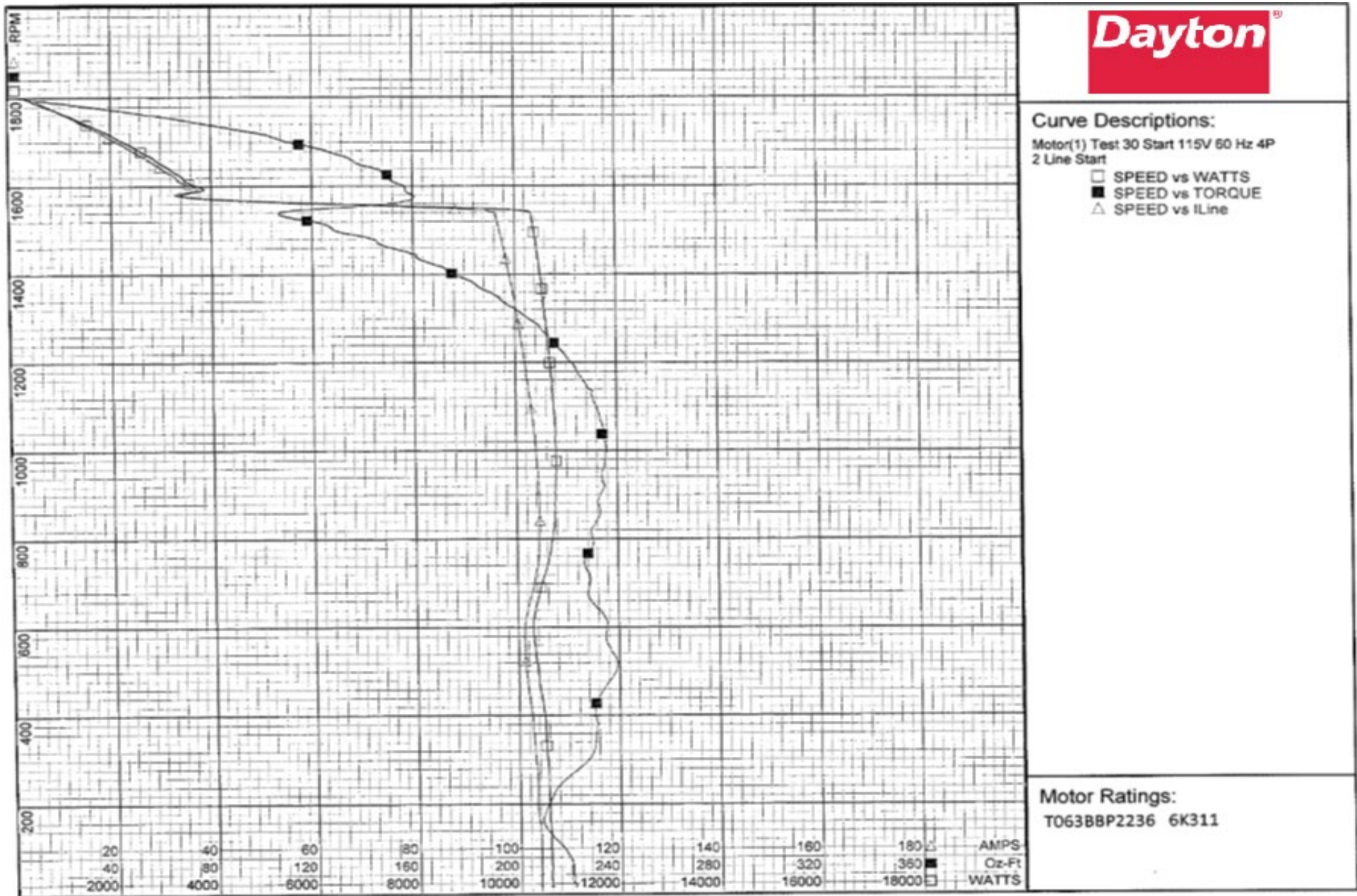
Dayton Electric Mfg. Co. Lake Forest, IL 60045 USA

Performance Data



6K311BG

REV.
-



Performance Data



6K311BG			REV. -											
Dayton Manufacturing Company														
Motor Description				Test Conditions										
Model: T063BBP2236 6K311				Test Type: Run		Run Cap: 50 mFd, 370V								
Motor ID:				Test Number: 13		Start Cap: 896.5 mFd, 125V								
Poles: 4				Poles: 4		Environment:								
Volts: 115/230				Volts: 115		Tested: 6/26/2014 2:42:19 PM								
Frequency: 60				Hz: 60		Tested By: Sharp, Gerald								
HP: 1.5				Rotation:		Gear Ratio: 1:1								
Speed: 1725				Special Cond:		Bearing Friction: 0.32 Oz-Ft								
Phase: 1				Speed Conn:		Windage Torque: -1.76 Oz-Ft								
Protector: CED				TestBoard: Amps Performance		Fixture #2								
Special Points	Vline(V)	Vaux(V)	Vcap(V)	Iline(A)	Imain(A)	Iaux(A)	Watts	RPM	Tq(Oz-ft)	HP	Eff(%)	PF(%)	Cap	
	115.0	170.1	211.2	3.89	6.38	4.145	165	1797	0.00	0.000	0.0	36.9	52.1	
	115.0	164.7	201.6	6.17	6.18	3.911	580	1780	25.63	0.543	69.8	81.7	51.5	
	115.0	159.7	193.5	9.83	8.66	3.752	1014	1763	51.31	1.077	79.2	89.7	51.4	
73 OZ-FT	115.0	154.9	186.8	13.24	11.68	3.635	1406	1745	73.00	1.517	80.4	92.4	51.6	
1.5 HP	115.0	155.1	187.1	13.08	11.54	3.641	1388	1746	72.15	1.500	80.6	92.3	51.6	
	115.0	154.7	186.4	13.38	11.82	3.630	1423	1744	73.77	1.531	80.3	92.5	51.6	
84 OZ-FT	115.0	152.3	183.4	14.96	13.30	3.573	1602	1736	84.00	1.736	80.9	93.1	51.7	
1725 RPM	115.0	149.1	179.1	17.22	15.51	3.491	1854	1725	95.38	1.959	78.8	93.6	51.7	
	115.0	149.0	179.0	17.27	15.56	3.489	1860	1725	95.63	1.964	78.8	93.6	51.7	
	115.0	143.6	172.3	20.95	19.30	3.386	2242	1704	112.21	2.276	75.7	93.0	52.1	
	115.0	137.5	165.2	24.78	23.20	3.248	2639	1682	129.34	2.589	73.2	92.6	52.2	
	115.0	131.2	158.2	28.60	27.13	3.114	3027	1658	141.69	2.797	68.9	92.0	52.2	
	115.0	125.3	151.4	32.39	31.05	2.989	3400	1631	153.85	2.988	65.5	91.3	52.4	
	115.0	118.7	144.9	36.19	35.00	2.869	3748	1603	159.87	3.051	60.7	90.0	52.5	
	115.0	112.8	138.7	39.84	38.80	2.756	4081	1572	168.26	3.149	57.6	89.1	52.7	
	115.0	106.5	133.1	43.43	42.54	2.652	4387	1540	169.97	3.115	53.0	87.8	52.9	
BDT OZ-FT	115.0	105.2	132.2	44.18	43.32	2.633	4449	1534	172.05	3.141	52.7	87.6	52.8	
	115.0	100.1	127.7	46.99	46.26	2.543	4679	1504	170.78	3.057	48.7	86.6	52.8	
	115.0	93.9	123.0	50.38	49.82	2.457	4969	1465	168.72	2.942	44.2	85.8	53.0	
	115.0	87.7	118.6	53.67	53.28	2.374	5211	1422	164.82	2.791	40.0	84.4	53.1	
	115.0	81.6	114.9	56.84	56.60	2.290	5433	1376	157.65	2.583	35.5	83.1	52.9	
	115.0	75.6	111.5	59.89	59.80	2.232	5629	1326	149.13	2.353	31.2	81.7	53.1	
	115.0	69.8	108.9	62.72	62.78	2.178	5794	1272	139.34	2.110	27.2	80.3	53.0	
	115.0	64.2	107.1	65.43	65.64	2.132	5938	1214	127.10	1.836	23.1	78.9	52.8	
	115.0	58.9	105.6	67.98	68.32	2.107	6062	1150	114.01	1.561	19.2	77.5	52.9	
	115.0	53.6	104.6	70.23	70.71	2.078	6148	1082	98.18	1.265	15.4	76.1	52.7	
	115.0	48.8	103.8	72.34	72.95	2.068	6226	1009	83.10	0.999	12.0	74.8	52.8	
	115.0	43.7	103.3	74.26	74.98	2.055	6274	930	64.71	0.716	8.5	73.5	52.8	
	115.0	39.0	102.5	76.00	76.85	2.038	6299	845	42.38	0.426	5.0	72.1	52.8	
	115.0	33.6	101.4	77.38	78.35	2.016	6261	754	18.66	0.167	2.0	70.4	52.7	
	115.0	26.3	100.8	77.60	78.72	1.985	6129	658	8.14	0.064	0.8	68.7	52.2	
	115.0	17.0	105.8	76.29	77.59	2.082	6046	561	39.58	0.264	3.3	68.9	52.2	
	115.0	14.8	113.2	76.66	78.02	2.222	6228	456	58.88	0.320	3.8	70.6	52.1	
	115.0	14.4	115.8	78.15	79.54	2.264	6364	336	42.95	0.172	2.0	70.8	51.8	
	115.0	12.5	117.9	79.07	80.54	2.307	6409	209	24.13	0.060	0.7	70.5	51.9	
	115.0	11.6	120.4	79.42	80.97	2.355	6421	74	17.02	0.015	0.2	70.3	51.9	
												DRAWING NO.	PAGE 3 of 8	REV.
												6K311BG		-

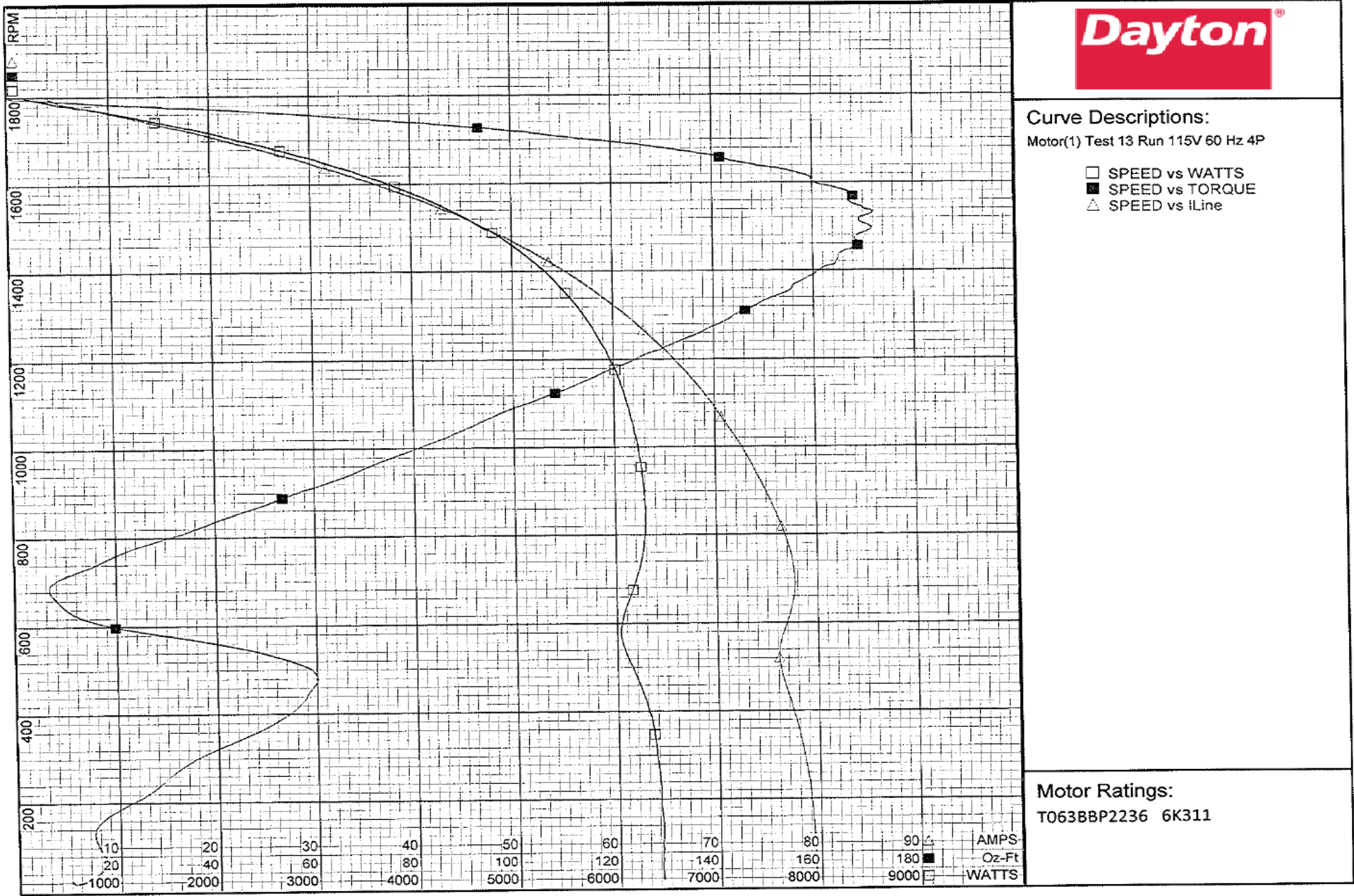
Dayton Electric Mfg. Co. Lake Forest, IL 60045 USA

Performance Data



6K311BG

REV.
-



Performance Data



6K311BG

REV.

-

Dayton Manufacturing Company

Motor Description

Model: T063BBP2236 6K311
Motor ID:
Poles: 4
Volts: 115/230
Frequency: 60
HP: 1.5
Speed: 1725
Phase: 1
Protector: CED

Test Conditions

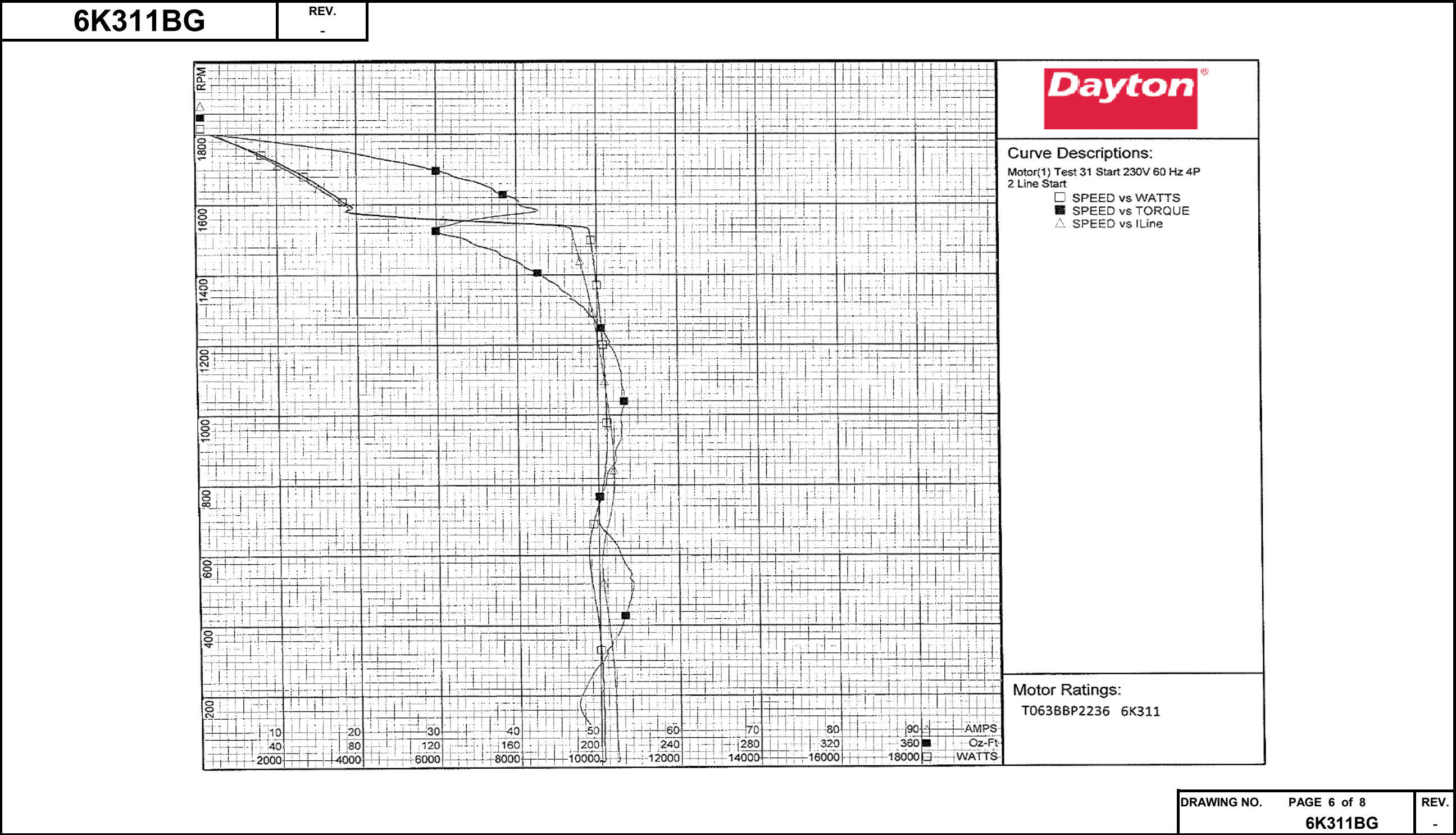
Test Type: Start Run Cap: 50 mFd, 370V
Test Number: 31 Start Cap: 896.5 mFd, 125V
Poles: 4 Environment:
Volts: 230 Tested: 6/27/2014 7:52:53 AM
Hz: 60 Tested By: Sharp, Gerald
Rotation: Gear Ratio: 1:1
Special Cond: 2 Line Start Bearing Friction: -0.16 Oz-Ft
Speed Conn: Windage Torque: -2.72 Oz-Ft
TestBoard: Amtps Performance Fixture #2

Special Points	Vline (V)	Vaux (V)	Vcap (V)	Iline (A)	Imain (A)	Iaux (A)	Watts	RPM	Tq (Oz-ft)	HP	Eff (%)	PF (%)	Cap
	230.0	223.2	103.1	51.97	37.13	33.52	10044	12	191.0	0.027	0.2	84.0	862.3
	230.0	223.9	102.3	52.04	36.90	33.32	10078	54	195.4	0.126	0.9	84.2	863.7
PUT OZ-FT	230.0	226.1	100.5	51.87	35.94	32.62	10070	183	189.4	0.414	3.1	84.4	861.1
	230.0	226.7	100.1	51.86	35.74	32.49	10063	210	191.3	0.479	3.6	84.4	861.4
	230.0	229.4	97.4	51.38	34.42	31.60	10009	357	206.2	0.877	6.5	84.7	860.6
	230.0	231.5	94.0	50.67	33.30	30.41	9865	488	216.0	1.255	9.5	84.6	857.8
	230.0	235.4	89.6	50.48	32.50	28.89	9750	608	210.3	1.523	11.7	84.0	855.0
	230.0	242.9	88.1	51.48	31.20	28.37	9938	719	200.3	1.715	12.9	83.9	853.7
	230.0	249.5	88.3	51.94	29.25	28.53	10145	825	204.4	2.008	14.8	84.9	856.7
	230.0	254.7	88.3	51.79	27.42	28.49	10228	921	210.6	2.308	16.8	85.9	856.0
	230.0	259.3	87.4	51.36	25.84	28.21	10216	1009	212.1	2.548	18.6	86.5	856.4
	230.0	264.1	86.9	50.90	24.36	28.04	10198	1090	211.8	2.747	20.1	87.1	855.9
	230.0	268.9	86.7	50.43	23.07	27.98	10148	1164	209.6	2.903	21.3	87.5	856.1
	230.0	274.0	87.1	49.95	21.94	28.09	10117	1231	203.9	2.986	22.0	88.1	855.4
	230.0	279.1	87.9	49.41	20.98	28.42	10065	1291	195.3	3.003	22.3	88.6	857.8
	230.0	284.4	89.4	48.89	20.21	28.96	10027	1347	185.1	2.967	22.1	89.2	859.0
	230.0	289.5	91.5	48.38	19.67	29.69	9982	1397	172.9	2.876	21.5	89.7	861.1
	230.0	294.6	94.0	47.84	19.35	30.59	9910	1443	157.6	2.709	20.4	90.1	863.4
	230.0	299.8	96.9	47.35	19.31	31.63	9876	1485	139.4	2.465	18.6	90.7	866.1
	230.0	304.7	100.0	46.96	19.48	32.77	9818	1523	121.5	2.203	16.7	90.9	869.1
	230.0	202.1	140.8	23.88	20.89	8.76	4947	1566	149.4	2.786	42.0	90.1	165.0
	230.0	187.8	144.6	18.39	17.24	2.98	3784	1600	161.1	3.068	60.5	89.5	54.7
	230.0	189.9	150.1	16.58	15.36	2.89	3440	1629	153.4	2.974	64.5	90.2	51.1
	230.0	192.2	156.3	14.82	13.52	3.00	3098	1653	145.1	2.855	68.7	90.9	50.9
	230.0	194.5	162.7	13.05	11.69	3.12	2752	1677	130.5	2.605	70.6	91.7	50.9
	230.0	196.3	168.9	11.31	9.93	3.23	2392	1699	118.5	2.396	74.7	91.9	50.7
	230.0	198.0	174.7	9.63	8.27	3.33	2048	1719	102.6	2.100	76.5	92.4	50.6
	230.0	200.2	182.3	7.78	6.58	3.48	1653	1740	84.1	1.742	78.6	92.4	50.7
	230.0	200.9	189.0	6.08	5.30	3.59	1268	1759	64.1	1.342	78.9	90.7	50.5
	230.0	201.8	196.6	4.18	4.44	3.74	820	1779	38.4	0.814	74.1	85.2	50.4
	230.0	200.0	204.7	2.60	4.61	3.90	395	1798	11.0	0.234	44.3	66.1	50.5
	230.0	200.0	205.4	2.48	4.68	3.92	357	1799	9.3	0.199	41.6	62.4	50.6

DRAWING NO. PAGE 5 of 8 REV.
6K311BG -

Dayton Electric Mfg. Co. Lake Forest, IL 60045 USA

Performance Data



Performance Data



6K311BG		REV. -											
Dayton Manufacturing Company													
Motor Description				Test Conditions									
Model: T063BBP2236 6K311				Test Type: Run		Run Cap: 50 mFd, 370V							
Motor ID:				Test Number: 15		Start Cap: 896.5 mFd, 125V							
Poles: 4				Poles: 4		Environment:							
Volts: 115/230				Volts: 230		Tested: 6/27/2014 8:20:01 AM							
Frequency: 60				Hz: 60		Tested By: Sharp, Gerald							
HP: 1.5				Rotation:		Gear Ratio: 1:1							
Speed: 1725				Special Cond:		Bearing Friction: 0.00 Oz-Ft							
Phase: 1				Speed Conn:		Windage Torque: -2.24 Oz-Ft							
Protector: CED				TestBoard: Aamps Performance		Fixture #2							
Special Points	Vline(V)	Vaux(V)	Vcap(V)	Iline(A)	Imain(A)	Iaux(A)	Watts	RPM	Tq(Oz-ft)	HP	Eff (%)	PF (%)	Cap
	230.0	199.8	210.3	1.99	5.03	4.113	160	1799	0.00	0.000	0.0	35.1	51.9
	230.0	201.4	200.8	3.17	4.18	3.895	589	1781	25.97	0.551	69.7	80.8	51.4
	230.0	201.9	193.2	4.99	4.55	3.749	1023	1764	51.67	1.085	79.1	89.2	51.5
	230.0	201.3	187.1	6.56	5.50	3.642	1389	1748	72.10	1.500	80.5	92.1	51.6
1.5 HP	230.0	201.3	186.8	6.63	5.55	3.637	1405	1747	73.00	1.518	80.6	92.2	51.6
73 OZ-FT	230.0	201.2	186.3	6.77	5.66	3.627	1437	1745	74.60	1.550	80.4	92.3	51.6
	230.0	200.6	183.2	7.56	6.29	3.567	1616	1737	84.00	1.737	80.2	92.9	51.6
84 OZ-FT	230.0	199.5	179.2	8.64	7.26	3.491	1846	1726	95.08	1.954	79.0	92.9	51.7
	230.0	199.3	178.6	8.80	7.41	3.481	1877	1725	96.58	1.983	78.8	92.8	51.7
1725 RPM	230.0	198.2	172.9	10.41	8.95	3.390	2222	1706	112.36	2.282	76.6	92.8	52.0
	230.0	195.8	165.4	12.46	11.02	3.249	2640	1683	130.63	2.617	74.0	92.2	52.1
	230.0	193.4	158.4	14.40	13.02	3.111	3034	1659	143.26	2.830	69.6	91.6	52.1
	230.0	190.9	151.7	16.31	15.03	2.992	3400	1633	156.49	3.043	66.8	90.6	52.3
	230.0	188.4	145.6	18.16	16.99	2.880	3745	1605	162.89	3.113	62.0	89.7	52.5
	230.0	185.4	139.4	20.06	19.03	2.763	4086	1574	172.01	3.223	58.9	88.5	52.6
	230.0	182.3	133.5	21.90	21.01	2.650	4395	1541	175.92	3.228	54.8	87.2	52.7
	230.0	179.0	127.8	23.75	23.00	2.540	4696	1505	176.05	3.154	50.1	86.0	52.7
BDT OZ-FT	230.0	178.4	126.7	24.09	23.38	2.518	4748	1497	177.11	3.157	49.6	85.7	52.7
	230.0	175.7	122.8	25.49	24.87	2.448	4957	1466	174.98	3.054	46.0	84.5	52.9
	230.0	172.2	118.2	27.20	26.73	2.356	5198	1424	171.15	2.902	41.6	83.1	52.9
	230.0	168.8	114.1	28.81	28.48	2.270	5418	1378	164.13	2.692	37.1	81.8	52.8
	230.0	165.4	110.5	30.37	30.18	2.208	5605	1328	156.38	2.472	32.9	80.2	53.0
	230.0	161.8	107.6	31.84	31.79	2.144	5770	1273	146.39	2.219	28.7	78.8	52.9
	230.0	158.4	105.1	33.23	33.32	2.097	5911	1215	134.47	1.945	24.5	77.3	52.9
	230.0	155.0	103.1	34.52	34.74	2.057	6029	1152	120.72	1.655	20.5	75.9	52.9
	230.0	151.6	101.9	35.69	36.03	2.028	6108	1084	104.48	1.348	16.5	74.4	52.8
	230.0	148.7	100.7	36.78	37.24	2.008	6182	1010	88.56	1.065	12.8	73.1	52.9
	230.0	145.8	100.1	37.77	38.35	2.000	6224	931	69.62	0.771	9.2	71.7	53.0
	230.0	143.6	98.9	38.66	39.35	1.974	6238	846	46.24	0.466	5.6	70.2	53.0
	230.0	141.3	97.4	39.36	40.16	1.946	6188	753	23.04	0.207	2.5	68.4	53.0
	230.0	138.6	96.3	39.48	40.44	1.905	6055	658	12.74	0.100	1.2	66.7	52.5
	230.0	131.1	101.1	38.84	39.96	1.993	5969	561	42.89	0.287	3.6	66.8	52.3
	230.0	123.6	108.6	39.02	40.22	2.137	6155	456	61.48	0.334	4.0	68.6	52.2
	230.0	120.9	111.3	39.74	40.98	2.185	6289	336	45.16	0.181	2.1	68.8	52.1
	230.0	118.4	113.2	40.22	41.52	2.208	6335	208	23.10	0.057	0.7	68.5	51.7
	230.0	115.4	115.4	40.35	41.72	2.250	6351	75	16.52	0.015	0.2	68.4	51.7

DRAWING NO. PAGE 7 of 8

6K311BG

REV.
-

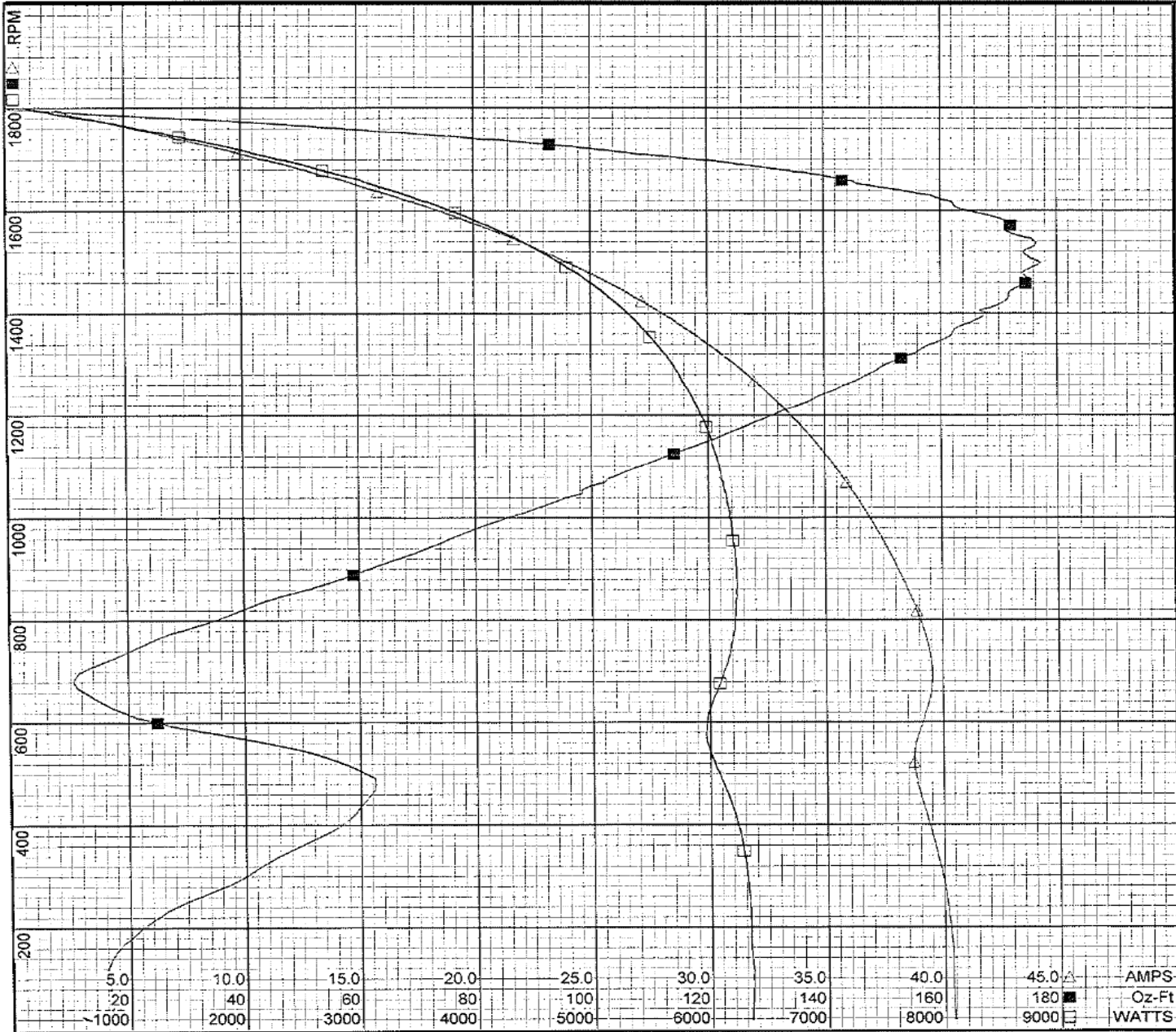
Performance Data



6K311BG

REV.

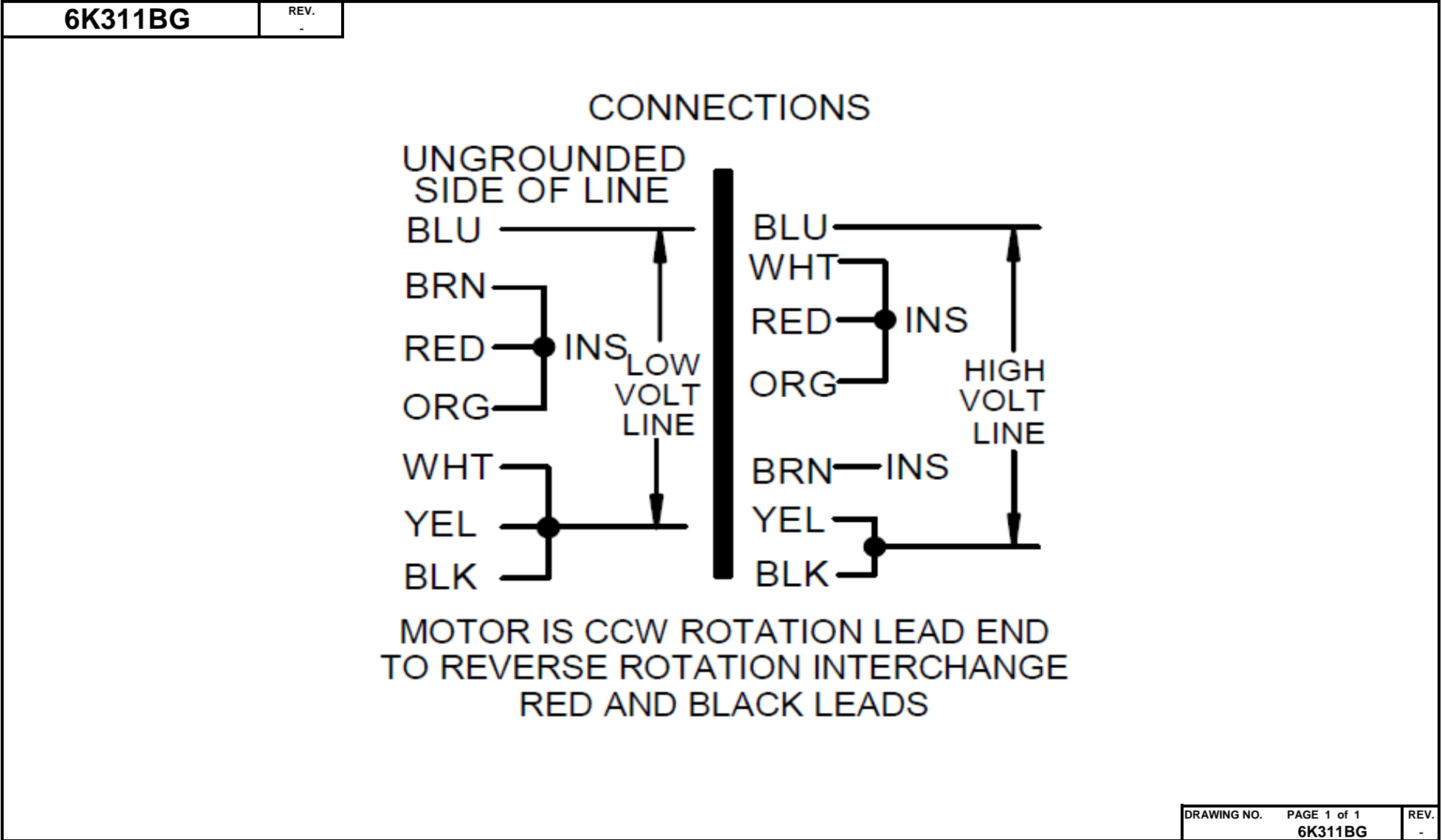
-



Curve Descriptions:
Motor(1) Test 15 Run 230V 60 Hz 4P

- SPEED vs WATTS
- SPEED vs TORQUE
- △ SPEED vs ILine

Motor Ratings:
T063B8P2236 6K311



Dayton®

FARM DUTY MOTOR

HP: 1 1/2

VOLTS: 115/230

AMPS: 16.2/8.1

RPM: 1725

DUTY: CONT

SF: 1.15

KVA CODE: K

ENCL: TEFC

THERMALLY PROTECTED: MANUAL

MFG. NO.

PROT. CODE: 01512

AVG. F.L.
EFF.

MTR REF: T63YZBJB-2232

Part No **6K311BG**



PH: 1

HZ: 60

FR: 145T

INS CL: B

AMB: 40 °C

SFA: 17.6/8.8

**Disconnect Power Before Making Any
Electrical Connections or Changes**

CONNECTIONS

UNGROUND
SIDE OF LINE

BLU ———

BRN ———

RED ———

ORG ———

WHT ———

YEL ———

BLK ———

INS
LOW
VOLT
LINE

BLU ———

WHT ———

RED ———

ORG ———

BRN ———

YEL ———

BLK ———

INS
HIGH
VOLT
LINE

**MOTOR IS CCW ROTATION LEAD END
TO REVERSE ROTATION INTERCHANGE
RED AND BLACK LEADS**



E37403



258501

Mfd for Dayton Electric Mfg. Co., Lake Forest, IL 60045 USA

Made in Mexico