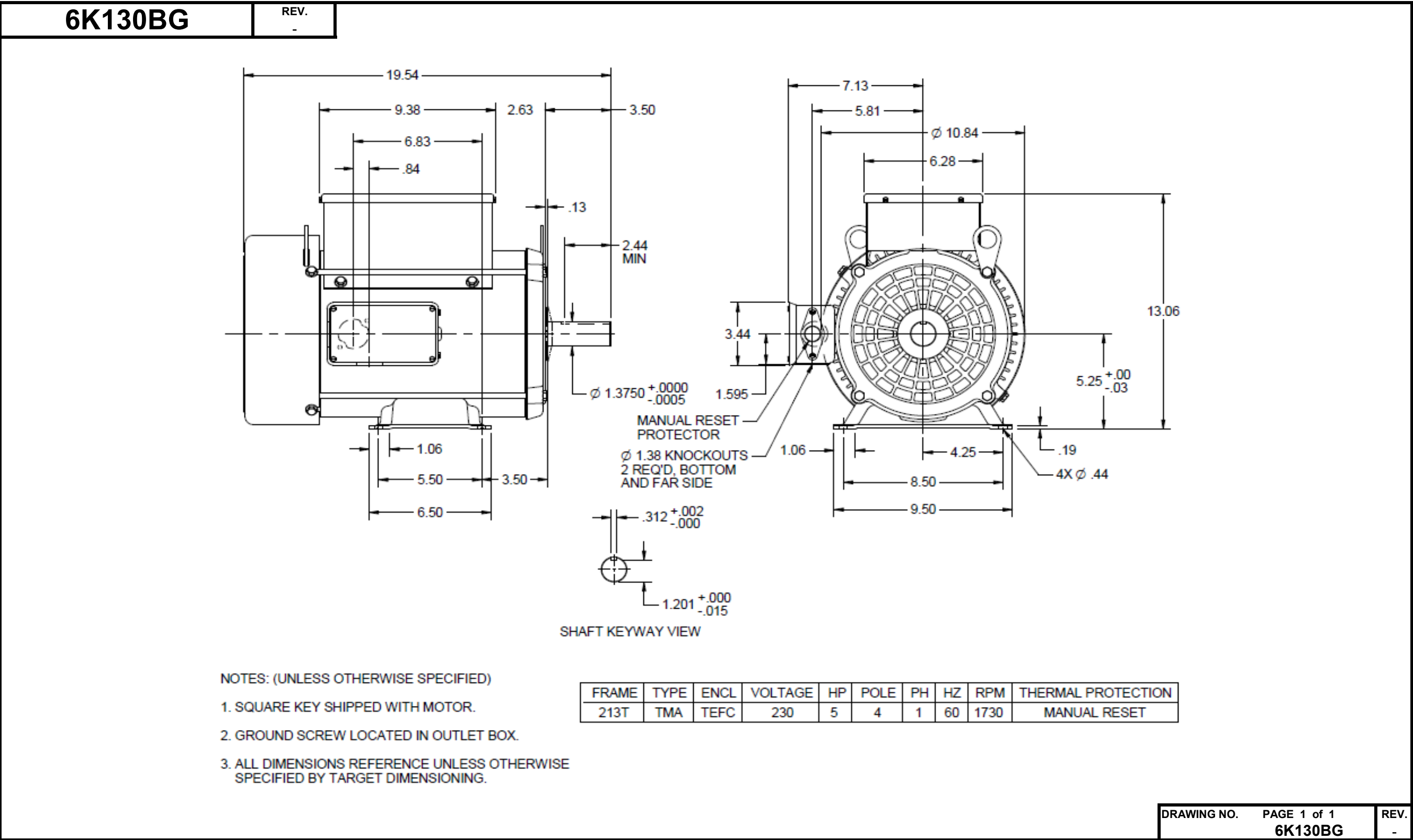


Dimensional Drawing



Dayton Electric Mfg. Co. Lake Forest, IL 60045 USA

# Performance Data

**6K130BG**REV.  
X

## MOTOR PERFORMANCE

MODEL NO.	SKU NO.	PHASE	TYPE	FRAME
6K130BG	6K130BG	1	SMA	213T

ORDER NO.	NA	LINE NO.
-----------	----	----------

HP:	5
POLES:	4
HZ:	60
SERVICE FACTOR:	1.00
DUTY CYCLE:	CONTINUOUS
ALTITUDE (FASL) FT:	3300
MAX AMBIENT:	40°C
ENCLOSURE:	TE
INSULATION CLASS:	F
VOLTS:	230
EFFICIENCY (%):	
S.F.	-
FULL	82.4
3/4	83.0
1/2	80.3
1/4	69.6
POWER FACTOR (%):	
S.F.	-
FULL	89.4
3/4	88.4
1/2	84.4
1/4	71.5
AMPS:	
S.F.	-
FULL	23.0
3/4	16.6
1/2	11.9
1/4	8.1
NO LOAD	5.6
LOCKED ROTOR AMPS:	134
NEMA CODE LETTER	G
NEMA DESIGN LETTER	L
FULL LOAD RPM	1730
THERMAL PROTECTION	MANUAL RESET
TORQUES:	
BREAKDOWN{LB-FT}	33.3
LOCKED ROTOR{LB-FT}	37.9
FULL LOAD{LB-FT}	15.0

NEMA Nominal and Guaranteed Efficiencies are up to 3,300 feet above sea level and 25 ° C ambient

DRAWING NO.	PAGE 1 of 2	REV.
	6K130BG	X

**Dayton Electric Mfg. Co. Lake Forest, IL 60045 USA**

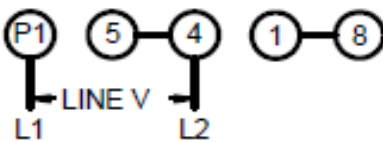
6K130BG

REV.  
0

**Motor Wiring Diagram**

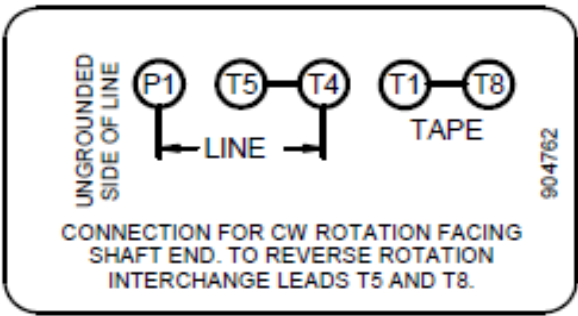
5 Lead, Single Phase, Single Voltage,  
Thermally Protected, CW Rotation

SINGLE PHASE THERMALLY PROTECTED  
PROTECTION THERMIQUE INHERENTE  
MOTOR LEAD CONNECTIONS



CONNECTION FOR CW ROTATION  
FACING SHAFT END. TO REVERSE ROTATION  
INTERCHANGE LEADS 5 AND 8.  
MOTOR MUST BE GROUNDED (USE GREEN LEAD IF  
SUPPLIED) PER THE NATIONAL ELECTRIC CODE.

912541



Connected for CW Rotation Facing the Shaft End.

To Reverse Direction of Rotation, Interchange Leads 5 & 8.

Each lead may have one or more cables comprising that lead.  
In such case, cable will be marked with the appropriate lead number.

DRAWING NO.	PAGE 1 of 1	REV.
6K130BG		0

**Dayton****Farm Duty Motor**

E47479



258525

MODEL NO **6K130BG**VOLTS **230**HP **5** RPM **1730**AMPS **23.0**PH **1** FRAME **213T** TYPE **TMA**

SFA

MOTOR  
REFSF **1.0**HZ **60**NEMA  
DESIGN**L**INSUL  
CLASS**F**ENCL **TEFC**MAX  
AMB **40 C**LR KVA  
CODE**G**THERMALLY  
PROTECTED **MANUAL RESET**DUTY **CONT**SHAFT  
END BRG **6208**OPP  
END BRG **6205**

Make sure that voltage,  
phase and freq of line  
agrees with values given  
on this plate. Connect  
per wiring diagram  
supplied with motor.

2040632

Manufactured for Dayton Electric Mfg. Co., Lake Forest, IL 60045 U.S.A.

Made in Mexico