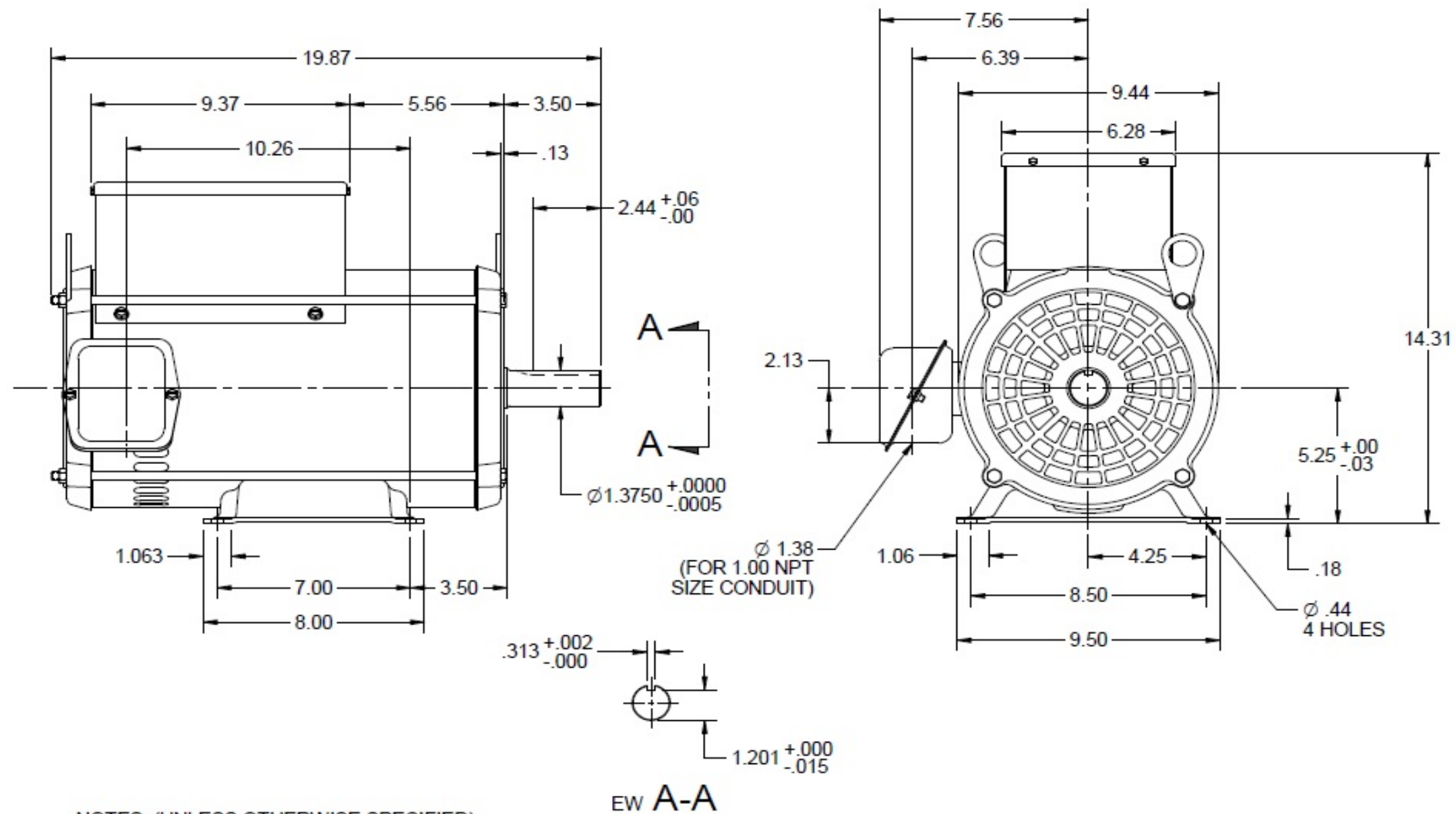


# Dimensional Drawing



- NOTES: (UNLESS OTHERWISE SPECIFIED)

1. SQUARE KEY SHIPPED WITH MOTOR.
2. GROUND SCREW LOCATED IN OUTLET BOX.
3. ALL DIMENSIONS REFERENCE UNLESS OTHERWISE SPECIFIED BY TARGET DIMENSIONING.

FRAME	TYPE	ENCL	VOLTS	HP	POLE	PH	HZ	THERMAL PROTECTION
215T	DM	ODP	230	10	4	1	60	NONE

DRAWING NO.	PAGE 1 of 1	REV.
	6K100BG	-

**Dayton Electric Mfg. Co. Lake Forest, IL 60045 USA**

# Performance Data

**6K100BG**REV.  
-

## MOTOR PERFORMANCE

MODEL NO.	SKU NO.	PHASE	TYPE	FRAME
6K100BG	6K100BG	1	DM	215T

ORDER NO.	NA	LINE NO.
-----------	----	----------

HP:	10
POLES:	4
HZ:	60
SERVICE FACTOR:	1.15
DUTY CYCLE:	CONTINUOUS
ALTITUDE (FASL) FT:	3300
MAX AMBIENT:	40 °C
ENCLOSURE:	ODP
INSULATION CLASS:	F
VOLTS:	230
EFFICIENCY (%):	
S.F.	87.5
FULL	88.2
3/4	88.5
1/2	82.6
1/4	78.3
POWER FACTOR (%):	
S.F.	91.4
FULL	90.7
3/4	88.4
1/2	82.6
1/4	66.8
AMPS:	
S.F.	48.0
FULL	42.2
3/4	31.3
1/2	22.9
1/4	15.8
NO LOAD	11.3
LOCKED ROTOR AMPS:	260
NEMA CODE LETTER	G
NEMA DESIGN LETTER	L
FULL LOAD RPM	1740
THERMAL PROTECTION	-
TORQUES:	
BREAKDOWN{LB-FT}	71.9
LOCKED ROTOR{LB-FT}	64.2
PULL UP{LB-FT}	61.7
FULL LOAD{LB-FT}	30.1

NEMA Nominal and Guaranteed Efficiencies are up to 3,300 feet above sea level and 25 °C ambient

The Above Data Is Typical, Sinewave Power Unless Noted Otherwise

DRAWING NO.	PAGE 1 of 1	REV.
	6K100BG	-

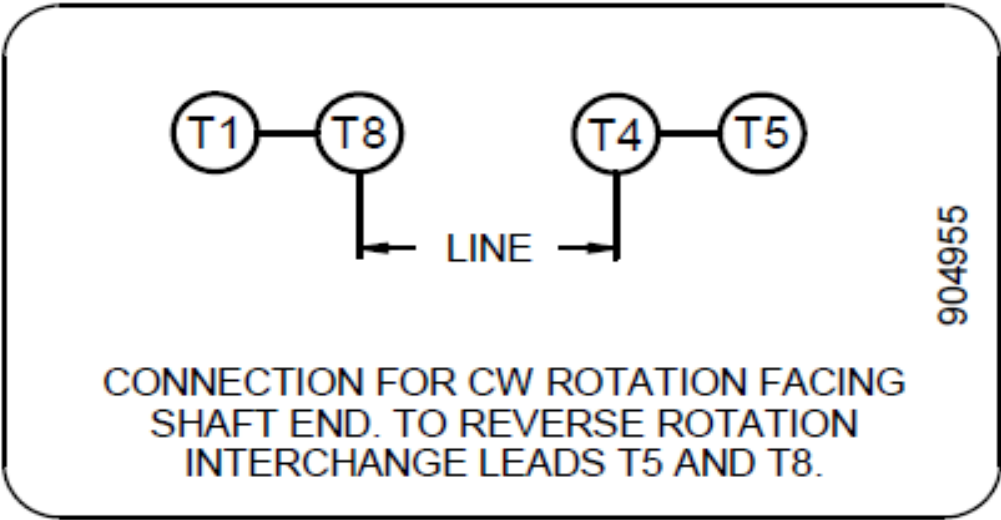
**Dayton Electric Mfg. Co. Lake Forest, IL 60045 USA**

6K100BG

REV.  
0

Motor Wiring Diagram

4 Lead, Single Phase, Single Voltage, CW Rotation



Connected for CW Rotation Facing Shaft End.  
To reverse direction of rotation, interchange leads T5 & T8.

Each lead may have one or more cables comprising that lead.  
In such case, cable will be marked with the appropriate lead number.

The Dayton logo consists of the word "Dayton" in a white, italicized, sans-serif font, set against a red rectangular background.Part  
No. 6K100BG**INDUSTRIAL  
MOTOR**SHAFT  
END BRG 6208-2Z-J/C3OPP  
END BRG 6205-2Z-J/C3

FR 215T

TYPE DM

ENCL ODP

PH 1 MAX  
AMB 40 °C ID#INSUL  
CLASS F DUTY CONT WT 153 LB BAL

HP 10

RPM 1740

SF 1.15

HZ 60

VOLTS 230

MAX  
KVARNEMA NOM  
EFFICIENCY 88.2

AMPS 42.2

CODE G

DES L

SF AMPS 48.0

PF 90.7

GUARANTEED  
EFFICIENCY

2041394-004 MADE IN MEXICO OF IMPORTED AND DOMESTIC COMPONENTS

Mfd. for Dayton Electric Mfg. Co.  
Lake Forest, IL 60045 USA