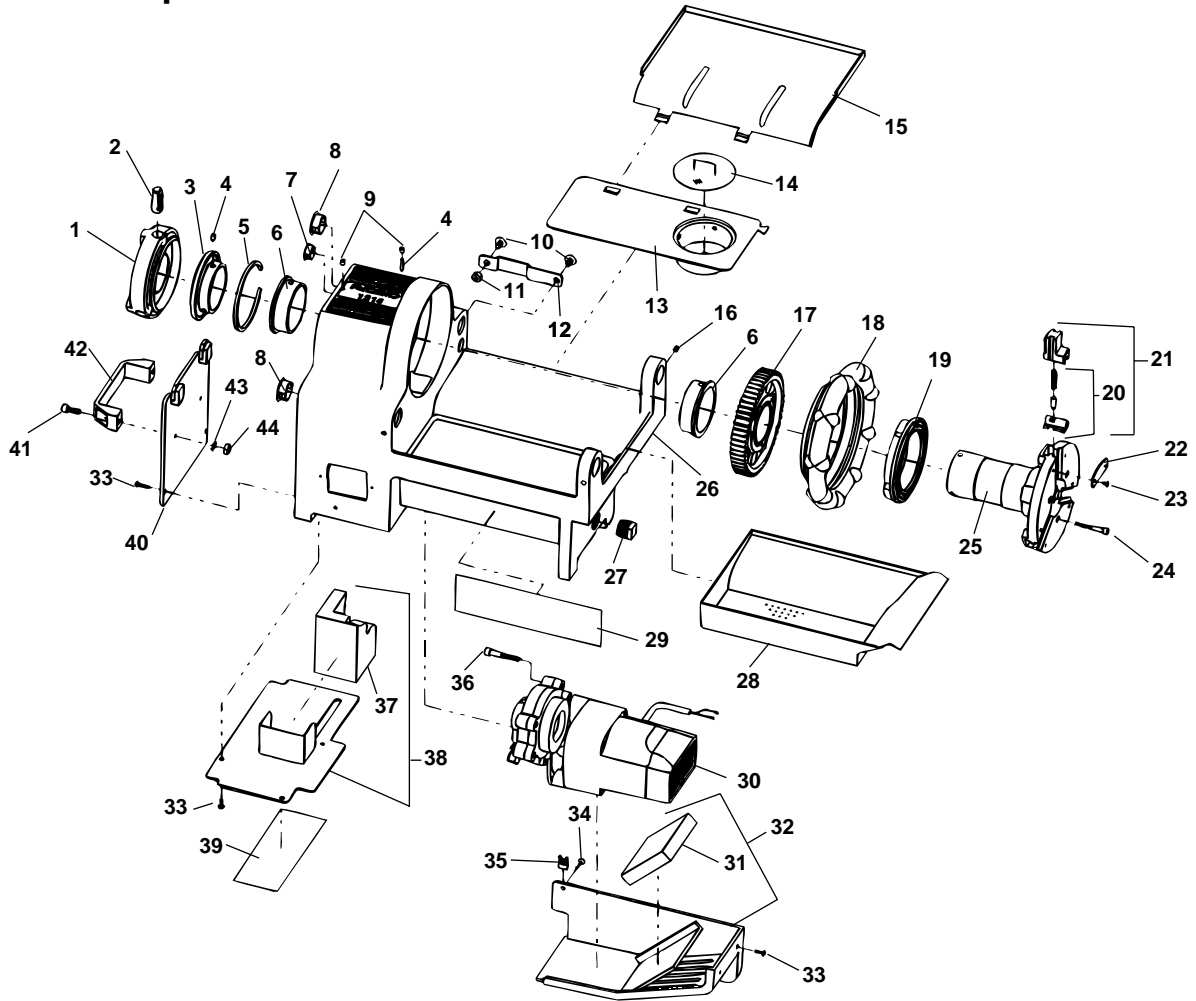


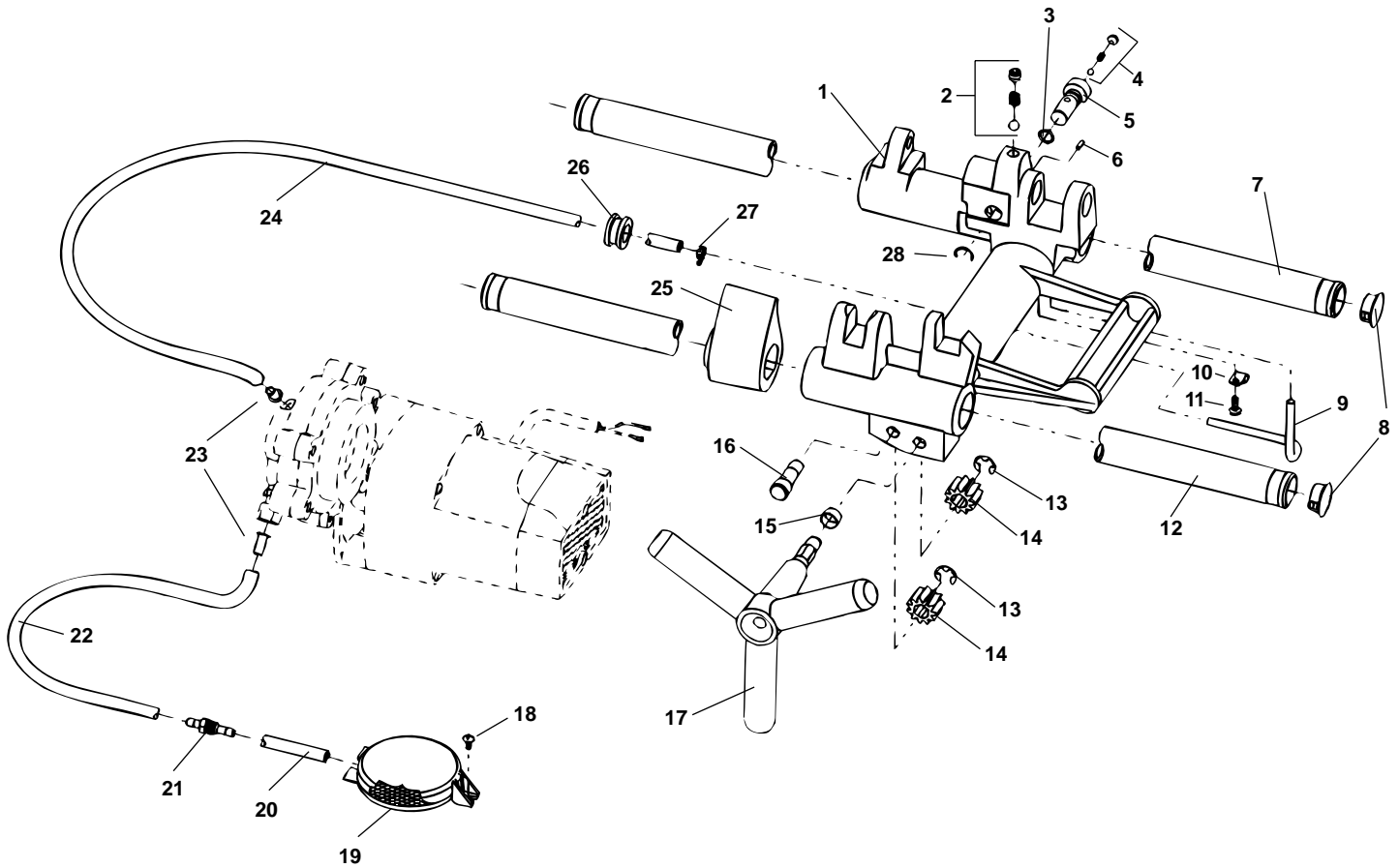
**Main Drive Components**



**NOTE: Order parts by Catalog Number only.  
DO NOT order by Reference Number.**

Ref. No.	Catalog No.	Description	Ref. No.	Catalog No.	Description
1	58232	Centering Head	24	46775	Screw 1/4" - 20 S.H.C.S. (6)
2	58237	Centering Jaw Set	25	58327	Chuck Cap and Spindle Assembly
3	58242	Centering Scroll	26	58332	Base Assembly (includes Ref. #6, 9 & 10)
4	54007	Roll Pin (4)	27	54302	Pipe Plug
5	58247	Internal Spiral Ring	28	58337	Chip Tray
6	58252	Spindle Bearing (2)	29	58342	Warning Plate
7	58257	Plug 13/16"	30	58347	4294 Motor Assembly - 230V
8	58262	Plug 13/16" (2)		58352	4194 Motor Assembly - 115V
9	54022	Ball Valve Oiler (2)		58357	4094 Motor Assembly - 110V
10	54137	Screw 5/16" - 18	31	58362	Motor Cover Foam
11	96730	Hex Nut 5/16" - 18	32	58367	Motor Cover
12	62767	Foot Switch Bracket	33	79965	Pan Head Screw #10 - 32 x 1/2" (6)
13	58272	Oil Pan Liner	34	43367	Self Tapping Screw
14	58277	Baffle Screen Assembly	35	43362	J-Clip
15	58282	Drip Tray	36	46035	Screw 5/16" x 13/4" S.H.C.S. (4)
16	45420	Set Screw 5/16" - 18 x 1/4" (3)	37	58372	Foam Baffle
17	58287	Drive Gear	38	58377	Bottom Cover
18	58292	Hand Wheel	39	58382	Wiring Diagram
19	58297	Chuck Scroll		58387	Wiring Diagram (Europe)
20	58302	Jaw Insert Set	40	58392	Rear Cover
	58307	Jaw Insert Set — Plastic Coated Pipe	41	44590	Screw 5/16" - 18 x 1" (2)
21	58312	Chuck Jaw Set	42	58402	Rear Handle
22	58317	Chip Guard	43	40770	Lock Washer 5/16" (2)
23	58322	Screw #6-32 Button HD C.S. (6)	44	96730	Hex Nut 5/16" - 18

**Carriage and Oil System**

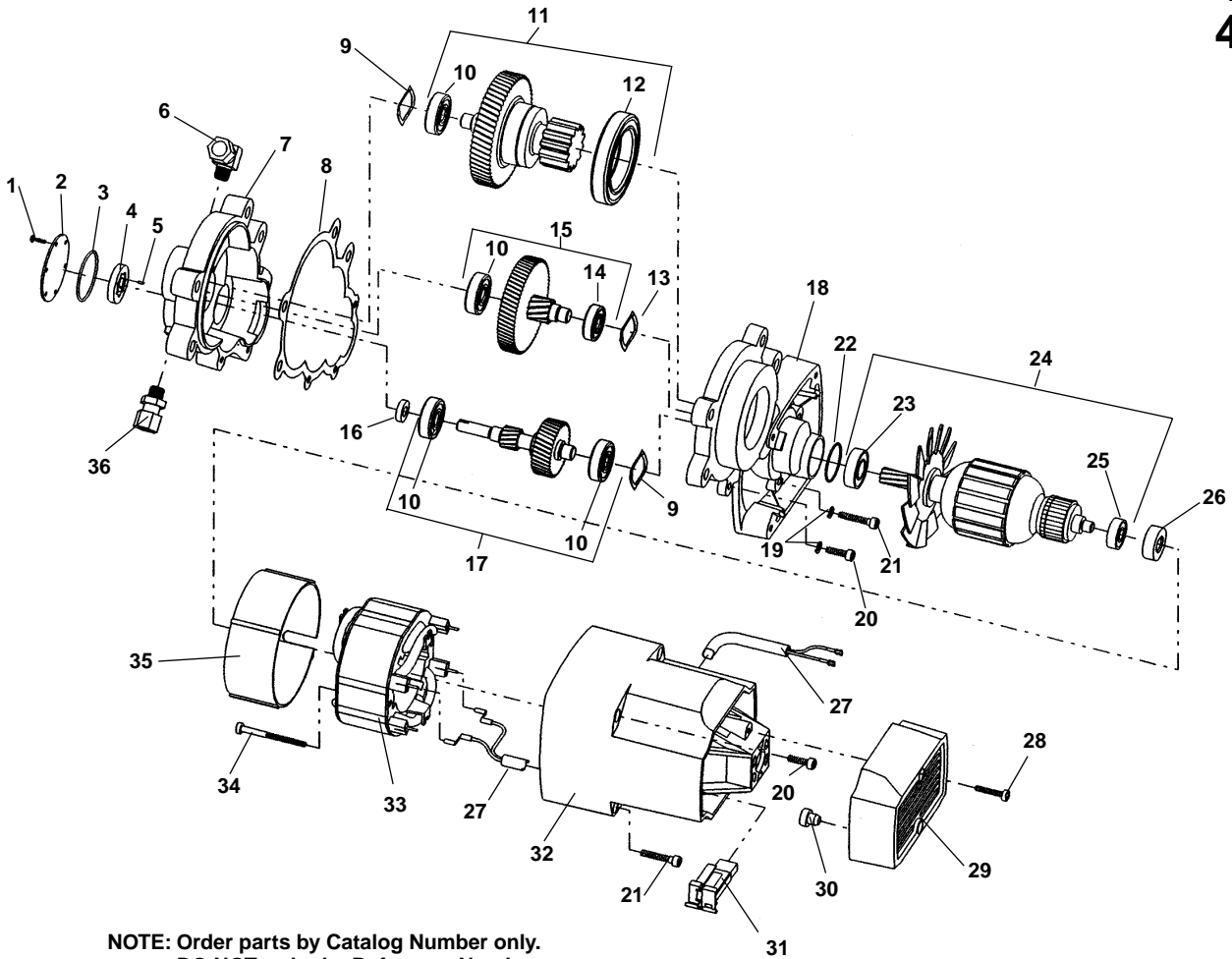


**NOTE: Order parts by Catalog Number only.  
DO NOT order by Reference Number.**

Ref. No.	Catalog No.	Description	Ref. No.	Catalog No.	Description
1	58407	Carriage (Includes Ref. #2)	16	58457	Idler Shaft
2	46810	Die Head Detente	17	58427	Plastic Plug (not shown)
3	54102	O-Ring	18	58462	Handwheel
4	35307	Oil Pressure Relief	19	45420	Screw
5	54097	Bypass Valve	20	58467	Filter Screen Assembly
6	58417	Roll Pin	21	61897	Oil Tube
7	58422	Rear Rail	22	54142	Bulkhead Fitting
8	58257	Plug (2)	23	58477	Intake Oil Line
9	58432	Oil Line	24	35117	Tube Insert
10	35062	Clamp	25	58482	Output Oil Line
11	79965	Screw 10-32 x 1/2"	26	58487	Carriage Stop
12	58437	Front Rail	27	47080	Grommet
13	58442	Retaining Ring	28	35142	Hose Clamp
14	58447	Carriage Pinion Gear		54107	Retaining Ring
15	58452	Bushing			

**Motor**

**4294  
4194  
4094**



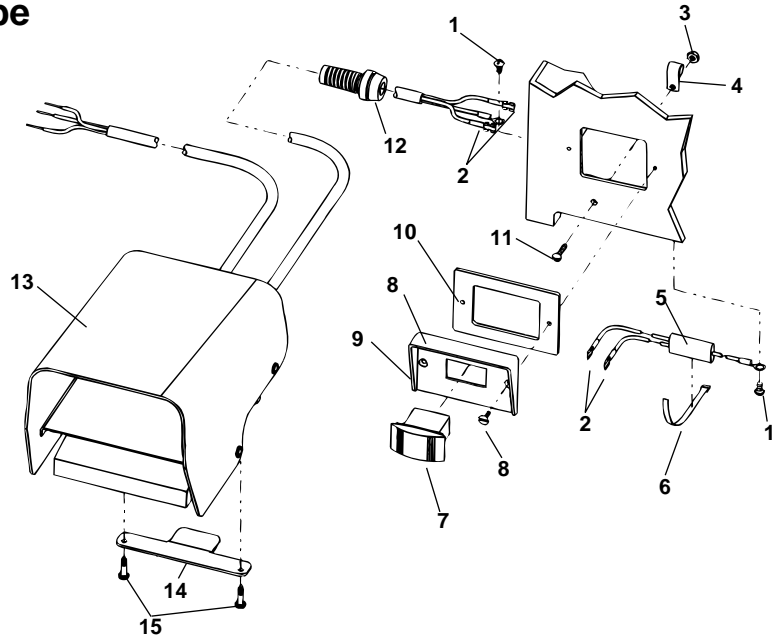
**NOTE: Order parts by Catalog Number only.  
DO NOT order by Reference Number.**

Ref. No.	Catalog No.	Description	Ref. No.	Catalog No.	Description
—	58347	4294 Motor Assembly - 230V	20	58547	Screw 10-32 x 3/4" S.H.C.S.
—	58352	4194 Motor Assembly - 115V	21	26642	Screw 10-32 x 1 3/4" S.H.C.S.
—	58357	4094 Motor Assembly - 110V	22	60227	O-Ring
1	96890	Screw 4-40 x 3/8"	23	45912	Bearing
2	96840	Geroter Cover	24	58552	Armature Assembly - 230V
3	96875	O-Ring		45907	Armature Assembly - 115V
4	96870	Geroter Set		58557	Armature Assembly - 100V
5	96885	Geroter Pin	25	43017	Bearing
6	52517	90 degree fitting	26	42777	Rubber Bearing Mount
7	58492	Rear Gear Case	27	58562	Wiring Harness
8	58497	Gasket	28	45867	Screw #8 x 7/8" Self Tapping (2)
9	58502	Wave Spring (2)	29	45872	End Cap
10	44760	Bearing (4)	30	45877	Bumper
11	58507	Drive Gear Assembly	31	45882	Brush Holder Assembly (2) 115V
12	58512	Bearing		61287	Brush Holder Assembly (2) 230V
13	35365	Wave Spring	32	45892	Motor Housing
14	58522	Bearing	33	58567	Field Assembly 230V
15	58527	2nd Gear Assembly		58572	Field Assembly 100V
16	96880	Oil Seal		45897	Field Assembly 115V
17	58532	1st Gear Assembly	34	45902	Field Screw (2)
18	58537	Front Gear Case	35	58577	Fan Shroud
19	58542	#10 Lock Washer (3)	36	58582	Straight Fitting

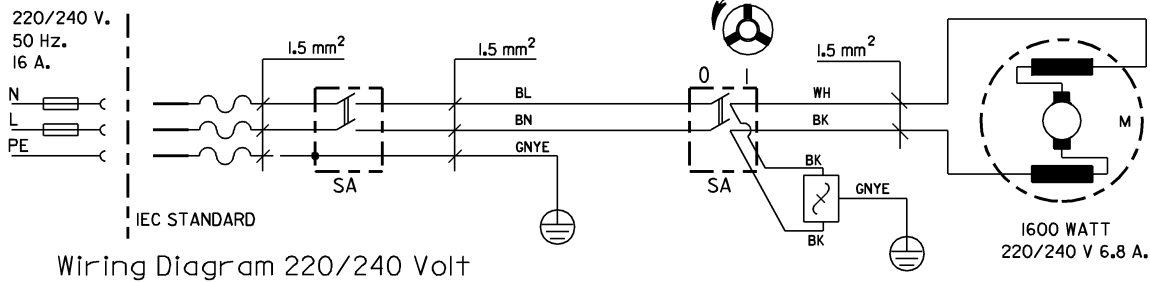
**Electrical Components – 230V Europe**

**NOTE: Order parts by Catalog Number only.  
DO NOT order by Reference Number.**

Ref. No.	Catalog No.	Description
1	45420	Ground Screw
2	58587	Quick Disconnect Terminal (4)
3	44695	Hex Nut #10-24
4	54222	Cable Clamp
5	36502	Suppressor
6	43552	Cable Tie
7	58597	Switch
8	54162	Screw 6-32 x 1/2" Flat Head (2)
9	58592	Mounting Plate
10	54172	Switch Gasket
11	92455	Screw #10-24 x 3/4" Round Head
12	72107	Strain Relief
13	36652	B-296 Foot Switch Assembly
14	58602	Foot Switch Hanger Bracket
15	54357	Screw

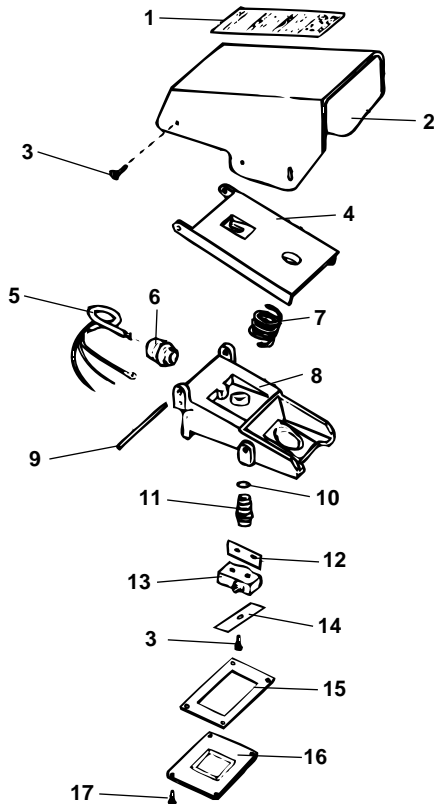


**Wiring Diagram – 220V/240V**



Wiring Diagram 220/240 Volt

**Foot Switch – B-294, B-296**

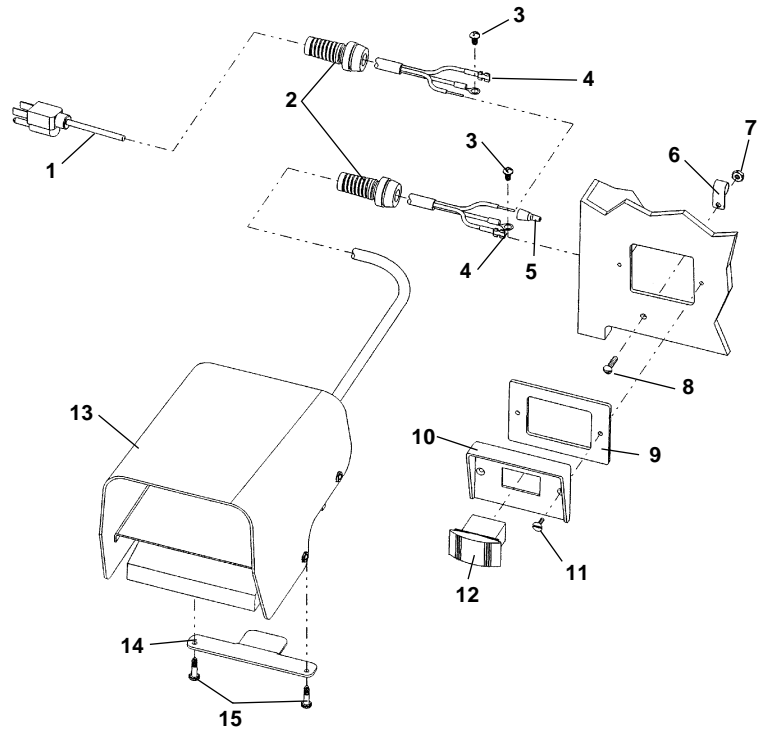


Ref. No.	Catalog No.	Description
—	36652	B-296 Foot Switch
—	36642	B-294 Foot Switch
1	54387	Warning Label
2	54382	Cover
3	36787	Screw #10 Self-Taping (5)
4	36697	Foot Pedal
5	36717	B-296 Cord
	39732	B-296 Line Cord (not shown)
	36707	B-294 Cord
6	36732	Cord Connector
7	36702	Spring
8	54352	B-296 Base
	54347	B-294 Base
9	36747	Pivot Pin
10	36767	O-Ring
11	36772	Poppet
12	54367	Insulator
13	36762	Micro Switch (2 Reg. on B-296)
14	54377	Switch Bracket
15	54372	Seal
16	54362	Bottom Cover
17	54357	Bottom Cover Screw (4)

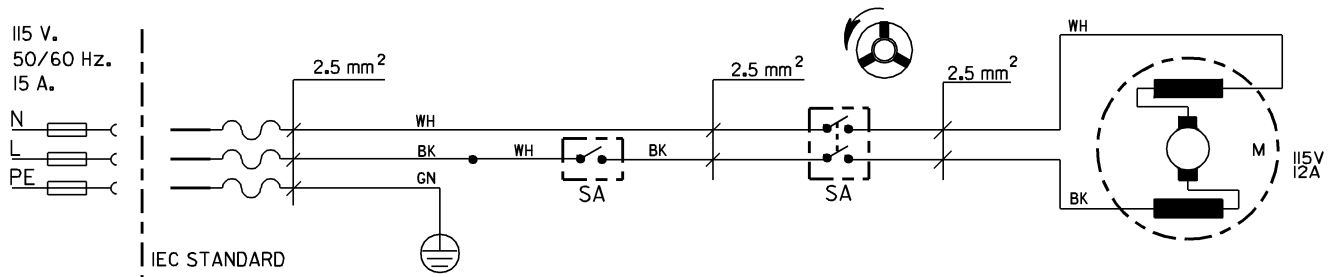
**Electrical Components – 115V/60Hz**

**NOTE: Order parts by Catalog Number only.  
DO NOT order by Reference Number.**

Ref. No.	Catalog No.	Description
1	46740	Power Cord
2	72107	Strain Relief (2)
3	45420	Ground Screw (2)
4	58587	Quick Disconnect (2)
5	44635	Wire Nut
6	54222	Cable Clamp (2)
7	44695	Hex Nut #10-24
8	92455	Screw #10-24 x 3/4" Round Head
9	54172	Switch Gasket
10	58592	Switch Plate
11	54162	Screw 6-32 x 2" Flat Head
12	58597	Switch
13	36642	B-294 Foot Switch
14	58602	Foot Switch Hanger Bracket
15	54357	Screw



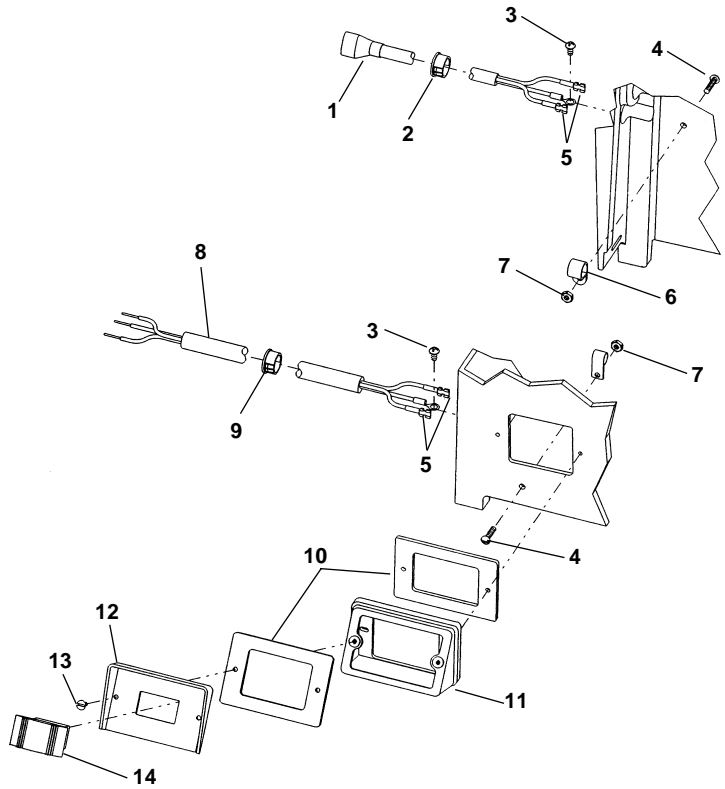
**Wiring Diagram – 115V**



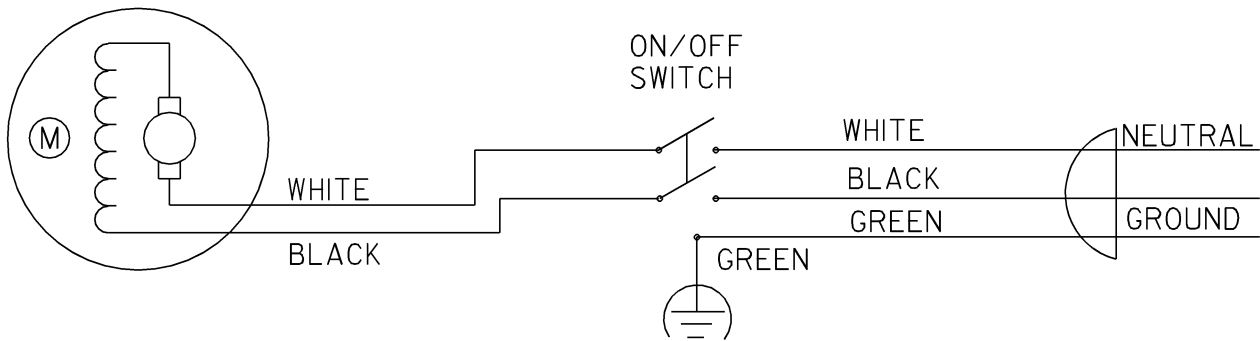
**Electrical Components**

**100V**      **Japan**  
**115V**      **Far East**  
**230V**      **Far East**

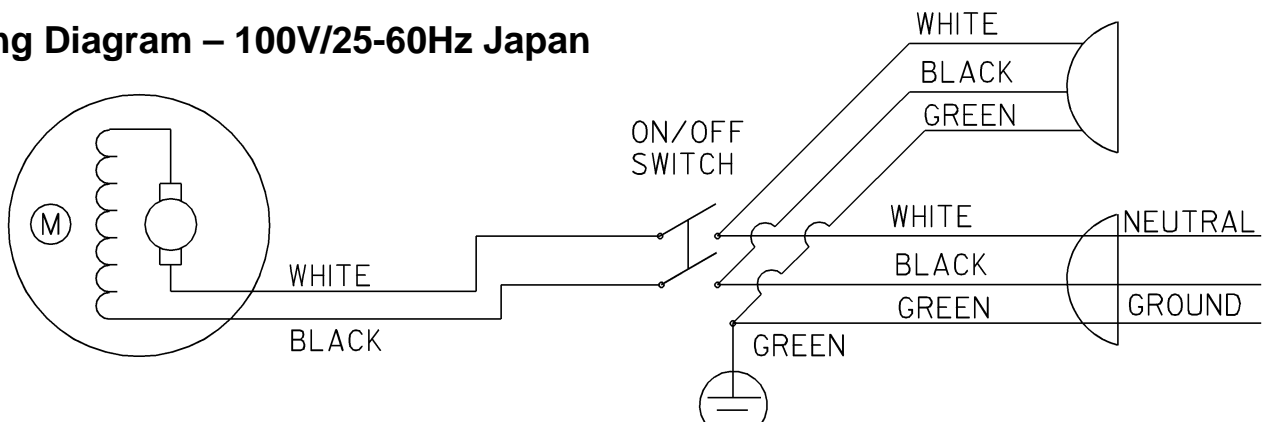
Ref. No.	Catalog No.	Description
1	64197	Accessory Cord w/Plug (Japan Only)
2	72117	Strain Relief (Japan Only)
3	45420	Ground Screw (2 Req. on Japan Models)
4	92455	Screw #10-24 x 3/4" (2 Req. on Japan Models)
5	58587	Quick Disconnect (2) (4 Req. on Japan Models)
6	54222	Cable Clamp (2 Req. on Japan Models)
7	44695	Hex Nut #10-24 (2 Req. on Japan Models)
8	46740	Power Cord
9	72112	Strain Relief
10	54172	Switch Gasket (2 Req. on Japan Models)
11	64202	Mounting Plate (Japan Only)
12	58592	Switch Plate
13	54162	Screw #6-32 x 1/2" Flat Head (2)
14	58597	Switch



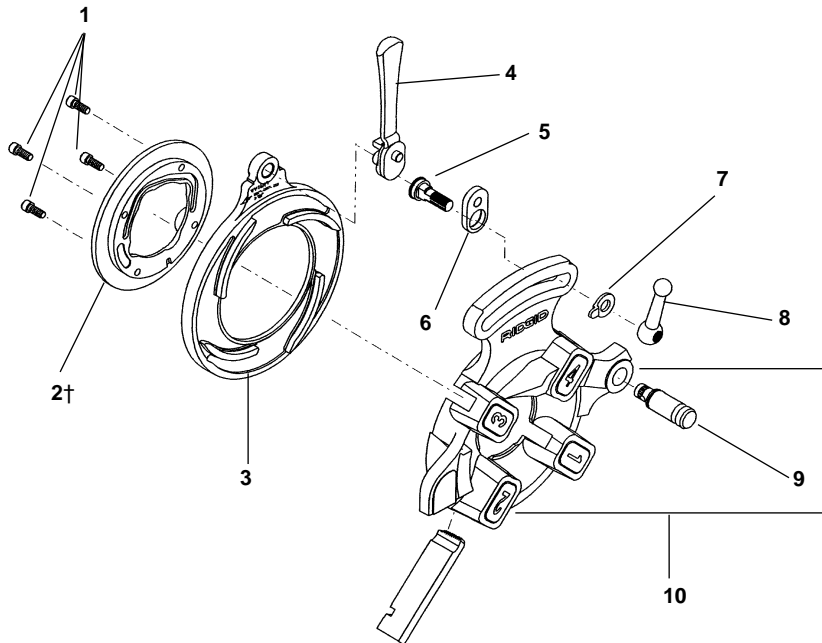
**Wiring Diagram – 100V-115V-230V/25-60Hz**



**Wiring Diagram – 100V/25-60Hz Japan**



**810 A Die Head  
811 A Die Head**

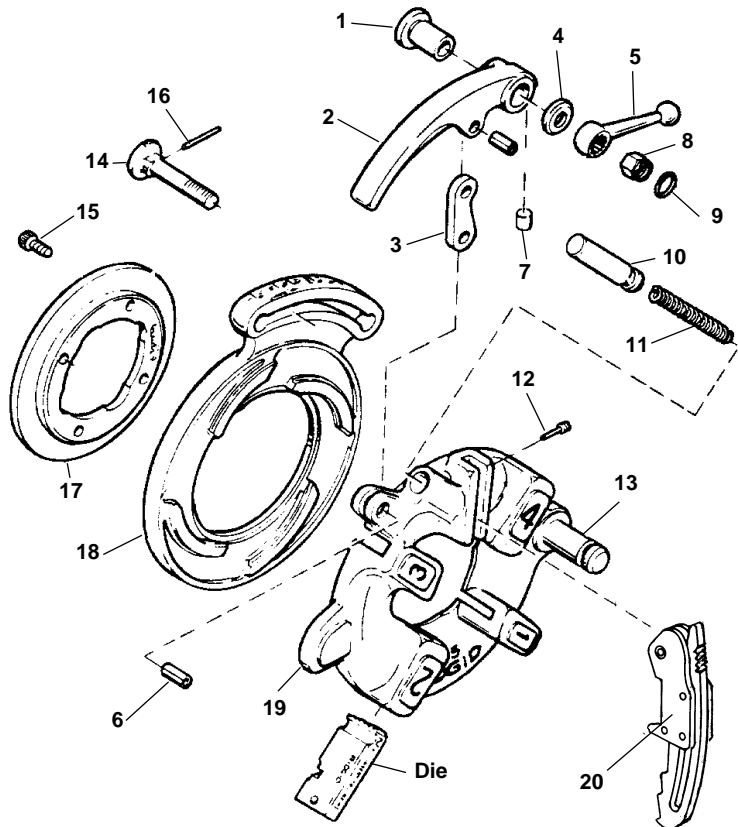


**NOTE: Order parts by Catalog Number only.  
DO NOT order by Reference Number.**

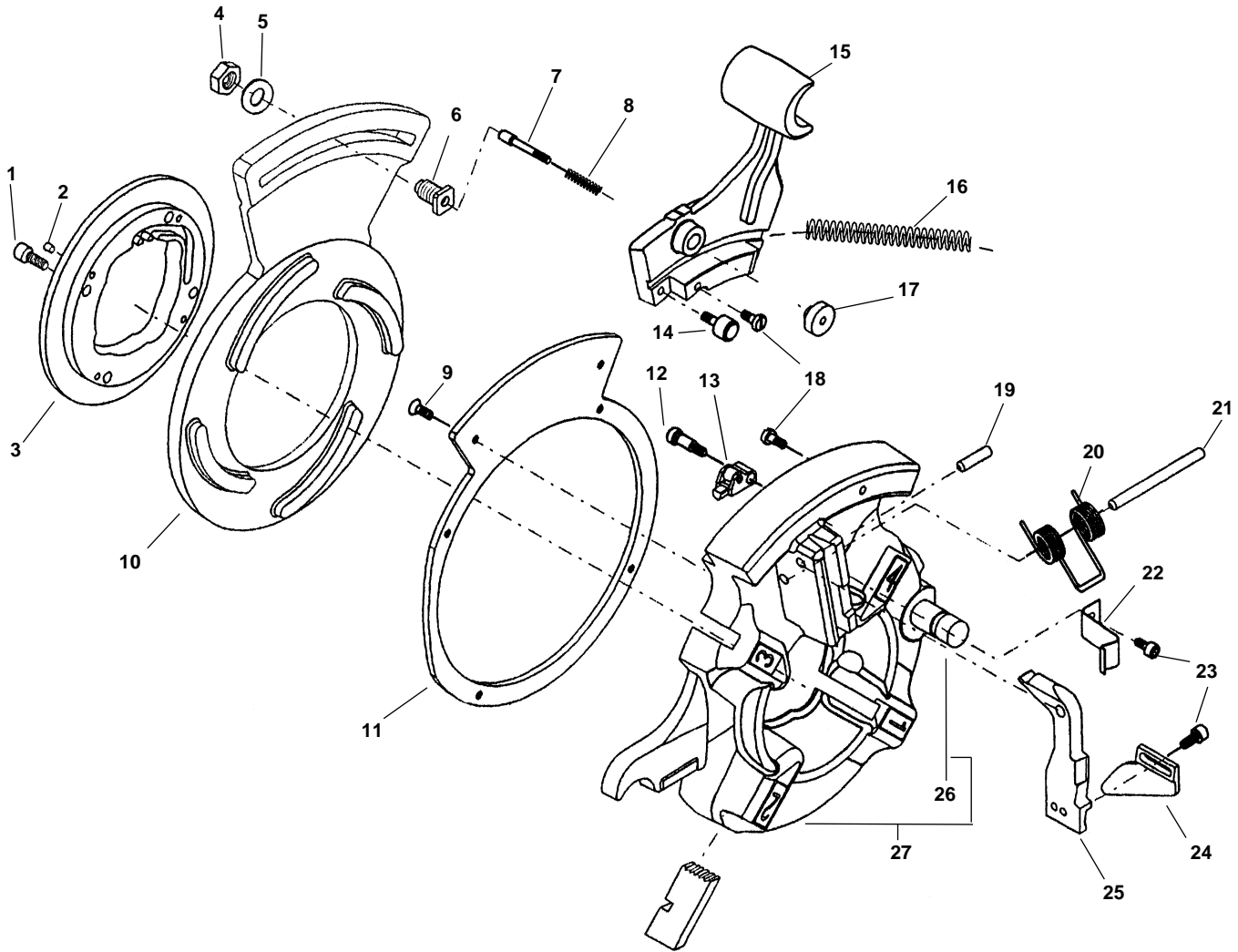
Ref. No.	Catalog No.	Description
—	59272	810A Die Head - BSPT
—	59277	810A Die Head - NPT
—	97065	811A Die Head - NPT
1	32205	Screw 1/4" - 20 x 5/8" S.H.C.S.
2	97020	Retaining Ring
3	43360	Cam Plate
4	46520	Throw Out Lever
5	39860	Lock Screw
6	39950	Link
7	26957	Lever Washer
8	39970	Clamp Lever
9	59832	Die Head Post
10	58642	810A Head w/Post - BSPT
	59467	810A Head w/Post - NPT
	40922	811A Head w/Post - NPT

**812 A Die Head**

Ref. No.	Catalog No.	Description
—	57982	812A Die Head - BSPT
1	44240	Blushing
2	43830	Throw-Out Lever
3	44265	Throw-Out Link
4	44245	Washer
5	44260	Clamp Lever
6	44270	Roll Pin (2)
7	45055	Insert
8	44250	Nut
9	44255	Retaining Clip
10	44275	Throw-Out Plunger
11	11565	Spring
12	44290	Trigger Screw
13	59832	Post
14	44235	Lock Screw
15	32205	Screw 1/4" - 20 x 5/8" S.H.C.S.
16	45050	Pin
17	97020	Retaining Ring
18	57987	Cam Plate With Size Bar - BSPT
	57992	Size Plate - BSPT (not shown)
	57997	Screw (2) (not shown)
19	40932	Head With Post
20	45327	Trigger Assembly



**No. 724 NPT & 924 BSPT 1/2" - 3/4" Die Heads**  
**No. 726 NPT & 926 BSPT 1" - 2" Die Heads**



**NOTE: Order parts by Catalog Number only.  
 DO NOT order by Reference Number.**

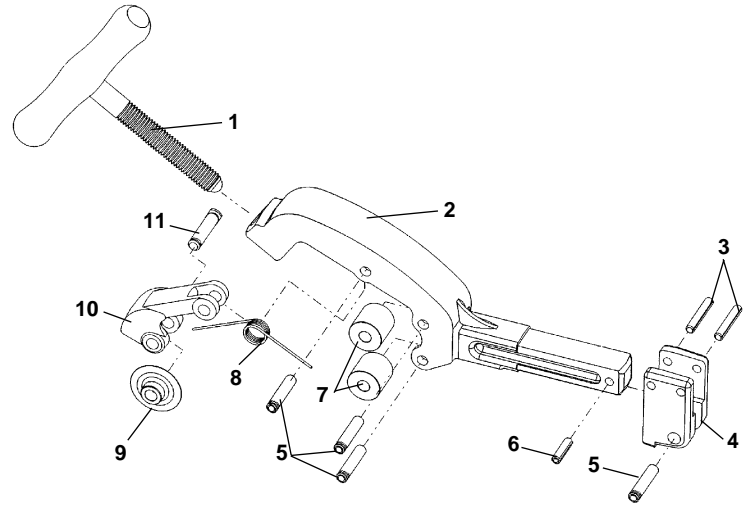
Ref. No.	Catalog No.	Description	Ref. No.	Catalog No.	Description
—	50317	924 1/2" - 3/4" BSPT Die Head	11	52442	Support Ring
—	50322	926 1" - 2" BSPT Die Head	12	34877	Soc. Hd. Shoulder Bolt 1/4" x 1/2"
—	54447	724 1/2" - 3/4" NPT Die Head	13	61617	Rocker Release Assembly
—	54442	726 1" - 2" NPT Die Head	14	52377	Slide Roller Bearing (2)
1	32205	Screw 1/4" - 20 x 5/8" SHCS (4)	15	58667	Adjuster Slide
2	60097	Detente Plunger (4)	16	61612	Release Spring
3	52292	Retaining Ring 1/2" - 3/4", 1" - 2"	17	61597	Adjuster Knob
4	61587	Jam Nut 3/8"	18	52372	Spring Retainer (2)
5	61592	Flat Washer 3/8"	19	87940	Roll Pin 1/4" x 1/8"
6	61607	Adjuster Bolt	20	52387	Trigger Spring
7	61602	Adjuster Plunger	21	52397	Spring Mounting Pin
8	52342	Adjuster Spring	22	60092	Trigger Spring
9	52447	Screw #10-24 x 1/2" FHCS (6)	23	45750	Screw #10-24 x 3/8" SHCS (2)
10	52312	Cam Plate BSPT 924, 1/2" - 3/4"	24	52417	Adjustable Trigger
	52317	Cam Plate BSPT 926, 1" - 2"	25	52422	Trigger Pivot
	56067	Cam Plate NPT 724, 1/2" - 3/4"	26	59832	Die Head Post
	56072	Cam Plate NPT 726, 1" - 2"	27	52432	Die Head w/Post



**No. 732 Pipe Cutter**

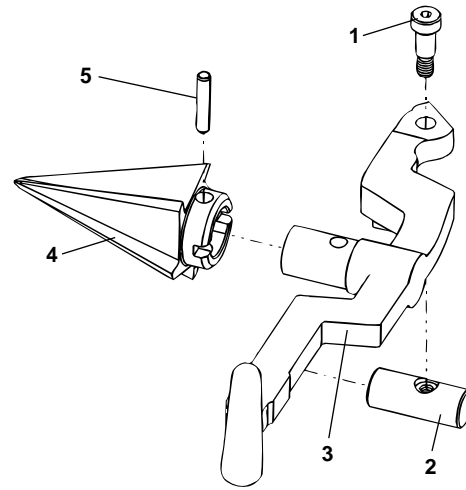
**NOTE: Order parts by Catalog Number only.  
DO NOT order by Reference Number.**

Ref. No.	Catalog No.	Description
—	58657	732 Cutter Assembly
1	58607	Handle Assembly
2	58612	Cutter Frame
3	54300	Roll Pin 1/4" x 1 1/2" (2)
4	58627	Support Arm Bracket
5	46662	Roller Pin (4)
6	58090	Roll Pin 1/4" x 1"
7	46960	Roll (2)
8	58617	Torsion Spring
9	44185	Cutter Wheel
10	58622	Wheel Housing
11	34780	Wheel Pin



**No. 344 Reamer**

Ref. No.	Catalog No.	Description
—	34612	344 Reamer Complete
1	36262	Shoulder Screw
2	36267	Pivot Pin
3	36272	Reamer Arm
4	36277	Reamer Core (R.H.)
	46660	Reamer Core (L.H. & R.H.)
5	35355	Split Roll Pin



**No. 1203 Stand**

Ref. No.	Catalog No.	Description
—	61187	1203 Stand
1	61182	Base
2	58637	Front Leg (2)
3	61470	Leg Rest (3)
4	40945	Chain Assembly
5	58412	Rear Leg
6	80045	Screw 3/8" - 16 x 3 1/4" (3)
7	46220	Thumb Screw (3)
8	79985	Lock Nut 3/8" -16 (3)

