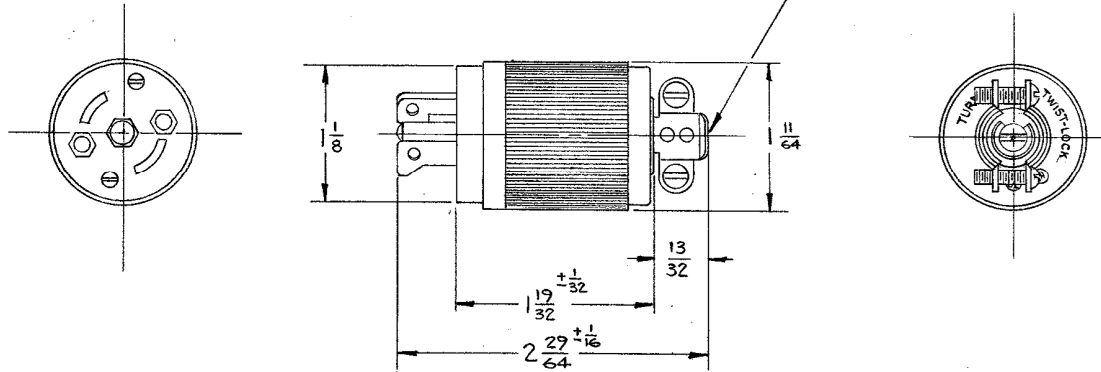


M-1828

4



LIST OF PARTS

DESCRIPTION	MATERIAL	FINISH
BODY	POLYESTER	BLACK
BASE	NYLON	BLACK
CONTACT BLADES	.060 BRASS	
INSULATOR	.031 NYLON	NATURAL
CORD CLAMP	.040 CRS	BLACK OX.
BINDING SCREWS	BRASS	
ROUND HEAD SCREWS	STEEL	BLACK OX.
FILISTER HEAD SCREWS	STEEL	ZINC PLATE

4	PARTS LIST: BODY MATERIAL POLYESTER WAS BAKELITE; CAT. NO. HBL7485 WAS 7485; DELETED BAKELITE FROM TITLE PER DCN 22825 RM	DJP	10/3/17
3	ADDED ED. H.D. & FILISTER H.D. SCREWS INSULATOR WAS VUL. FIB. SEE DCN #1258	ESJ	6-18-92 JLL
2	REVISED & REDRAWN		5-5-83 ASM
SYM	REVISIONS	APP	DATE

SUPERSEDES DWG. DATED 5-11-66

TITLE
15A. 125/250 V. 3 WIRE POLARIZED
MIDGET TWIST-LOCK
MALE CAP

TOLERANCES UNLESS
OTHERWISE SPECIFIED
FRACTIONS ± 1/64
DECIMALS ± .005
ANGLES ± 2°

HARVEY HUBBELL, INC.
SHELTON CONN.
DR. BY ASM APP. BY
TR. BY SCALE 1:1
CHK'D. BY DATE 5-5-83

DIMENSION SHEET FOR CAT. NO. HBL7485

REPAIRABLE NON-REPAIRABLE

B M-1828

4