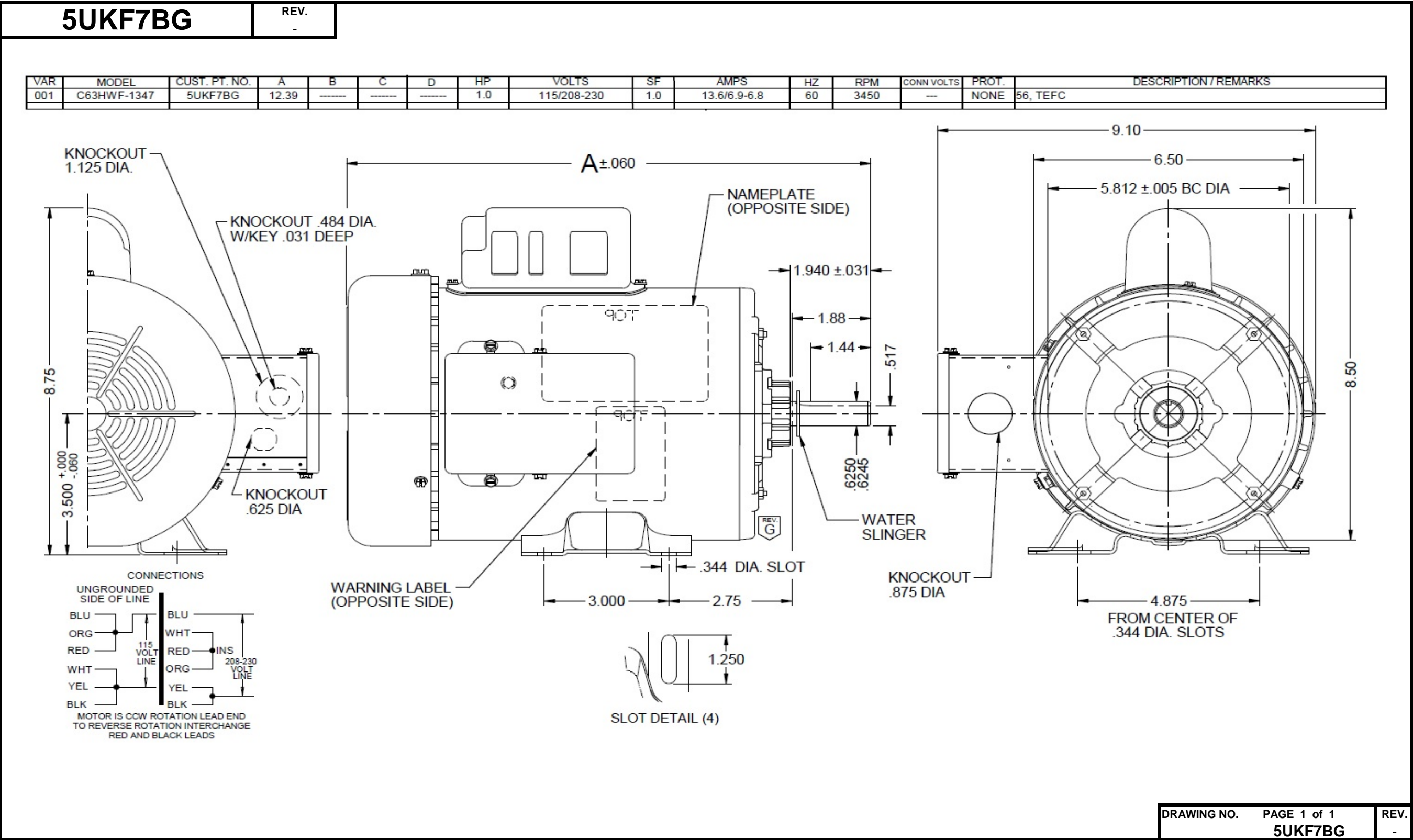


Dimensional Drawing



Performance Data



5UKF7BG

REV.
-

MOTOR PERFORMANCE

HP:	1						
Poles:	2						
No. of Speeds:	1						
Volts:	115/208-230	115	208	230			
HZ:	60	60	60	60			
Service Factor:	1						
Efficiency:	@ Rated Load	67.0	66.5	67.2			
Power Factor:	@ Rated Load	78.5	83.4	78.0			
Amps:	@ No Load						
	@ Rated Load	12.4	6.5	6.2			
	@ Service Factor	12.4	6.5	6.2			
	@ Locked Rotor	64.6	29.8	33.3			
RPM:	@ Rated Load	3483	3448	3485			
Ambient (°C):	40						
Altitude (FASL):							
Torques:	Breakdown	59.2	47.9	60.6			
	Locked Rotor	71.5	52.3	66.8			
	Pull-Up	69.4	51.9	65			
	Rated Load	24.3	24.3	24.3			
	Service Factor	24.3	24.3	24.3			
Watts:	Rated Load	1122	1119	1118			
KVA Code:	J	J	G	J			
Temperature Rise:	@ Rated Load	59.5	64.8	60.2			
	@ Service Factor	-	-	-			
Thermal Protector:	Trip Temp (°C)	-	-	-			
Winding Material:	Start (Auxiliary)	Cu	Cu	Cu			
	Run (Main)	Al	Al	Al			
Capacitor(s):	Start (MFD / Volts)	519 mFd, 110V					
	No. of Start Capacitors						
	Run (MFD / Volts)	NA					
	No. of Run Capacitors						

LOW SPEED PERFORMANCE DATA:

HP:							
Poles:							
Volts:							
HZ:							
Efficiency:	@ Rated Load						
Power Factor:	@ Rated Load						
Amps:	@ No Load						
	@ Rated Load						
	@ Service Factor						
	@ Locked Rotor						
Torques:	Bead Down						
	Locked Rotor						
	Pull-Up						
	Rated Load						
	Service Factor						
Watts:	@ Rated Load						
Temperature Rise:	@ Rated Load						
	@ Service Factor						

DRAWING NO. PAGE 1 of 1 REV.
5UKF7BG -

Dayton Electric Mfg. Co. Lake Forest, IL 60045 USA

Performance Data



5UKF7BG

REV.
-

Dayton Manufacturing Company

Motor Description

Model: C063HWF1347 5UKF7BG
 Motor ID: 1 of 3
 Poles: 2
 Volts: 115/208-230
 Frequency: 60/50
 HP: 1
 Speed: 3450/2850
 Phase: 1
 Protector:

Test Conditions

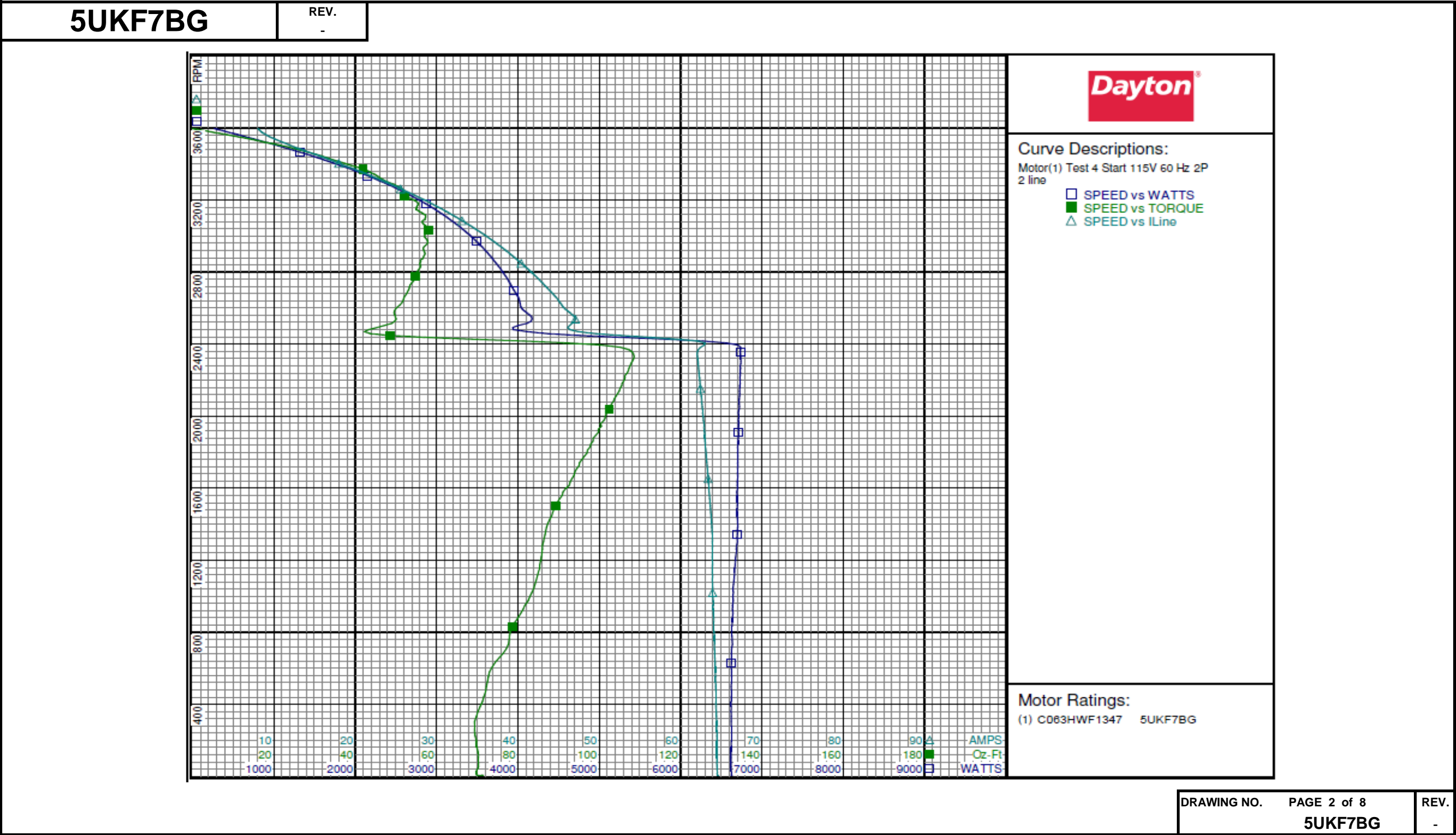
Test Type: Start
 Test Number: 4
 Poles: 2
 Volts: 115
 Hz: 60
 Rotation:
 Special Cond: 2 line
 Speed Conn:
 TestBoard: Amps Performance Fixture #1
 Run Cap: 0
 Start Cap: 519µfd
 Environment: 19.8 Deg C 57 % RH 998 hPa
 Tested: 7/10/2015 8:12:47 AM
 Tested By: Sharp, Gerald
 Gear Ratio: 1:1
 Bearing Friction: -0.50 Oz-Ft
 Windage Torque: -4.06 Oz-Ft

Special Points	Vline (V)	Iline (A)	Watts	RPM	Tq (Oz-ft)	HP	Eff (%)	PF (%)
	115.0	64.56	6626	5	71.50	0.004	0.0	89.3
	115.0	64.46	6622	75	70.32	0.063	0.7	89.3
PUT OZ-FT	115.0	64.42	6622	305	69.37	0.252	2.8	89.4
	115.0	64.38	6621	359	70.16	0.300	3.4	89.4
	115.0	64.24	6626	631	74.39	0.559	6.3	89.7
	115.0	64.06	6635	880	80.03	0.838	9.4	90.1
	115.0	63.92	6660	1111	84.77	1.121	12.6	90.6
	115.0	63.90	6693	1324	86.48	1.363	15.2	91.1
	115.0	63.60	6696	1522	89.74	1.626	18.1	91.5
	115.0	63.30	6700	1707	94.44	1.919	21.4	92.0
	115.0	62.98	6710	1877	98.49	2.201	24.5	92.6
	115.0	62.69	6719	2037	102.50	2.485	27.6	93.2
	115.0	62.38	6734	2182	105.67	2.745	30.4	93.9
	115.0	62.11	6740	2318	108.45	2.993	33.1	94.4
	115.0	56.32	5279	2437	57.12	1.657	23.4	81.5
	115.0	46.99	4169	2550	49.87	1.514	27.1	77.2
	115.0	44.71	4006	2658	51.99	1.645	30.6	77.9
	115.0	42.61	3877	2757	54.54	1.790	34.4	79.1
	115.0	40.42	3733	2848	55.87	1.894	37.9	80.3
	115.0	38.15	3574	2932	56.73	1.980	41.3	81.5
	115.0	35.82	3400	3008	57.15	2.047	44.9	82.5
	115.0	33.39	3205	3078	56.46	2.069	48.2	83.5
	115.0	30.95	3000	3142	55.40	2.072	51.5	84.3
	115.0	28.48	2782	3200	54.28	2.068	55.4	84.9
	115.0	26.08	2559	3252	51.83	2.007	58.5	85.3
	115.0	23.54	2314	3303	47.60	1.872	60.3	85.5
	115.0	21.19	2076	3348	44.05	1.756	63.1	85.2
	115.0	18.67	1814	3391	39.03	1.576	64.8	84.5
	115.0	16.26	1548	3432	33.26	1.359	65.5	82.8
	115.0	13.88	1268	3472	27.20	1.124	66.1	79.5
	115.0	11.68	988	3509	20.37	0.851	64.3	73.6
	115.0	9.67	682	3547	12.27	0.518	56.6	61.4
	115.0	8.28	364	3585	2.58	0.110	22.6	38.2
	115.0	8.07	267	3596	0.00	0.000	0.0	28.7

DRAWING NO. PAGE 1 of 8 REV.
 5UKF7BG -

Dayton Electric Mfg. Co. Lake Forest, IL 60045 USA

Performance Data



Performance Data



5UKF7BG

REV.
-

Dayton Manufacturing Company

Motor Description

Model: C063HWF1347 5UKF7BG
Motor ID: 1 of 3
Poles: 2
Volts: 115/208-230
Frequency: 60/50
HP: 1
Speed: 3450/2850
Phase: 1
Protector:

Test Conditions

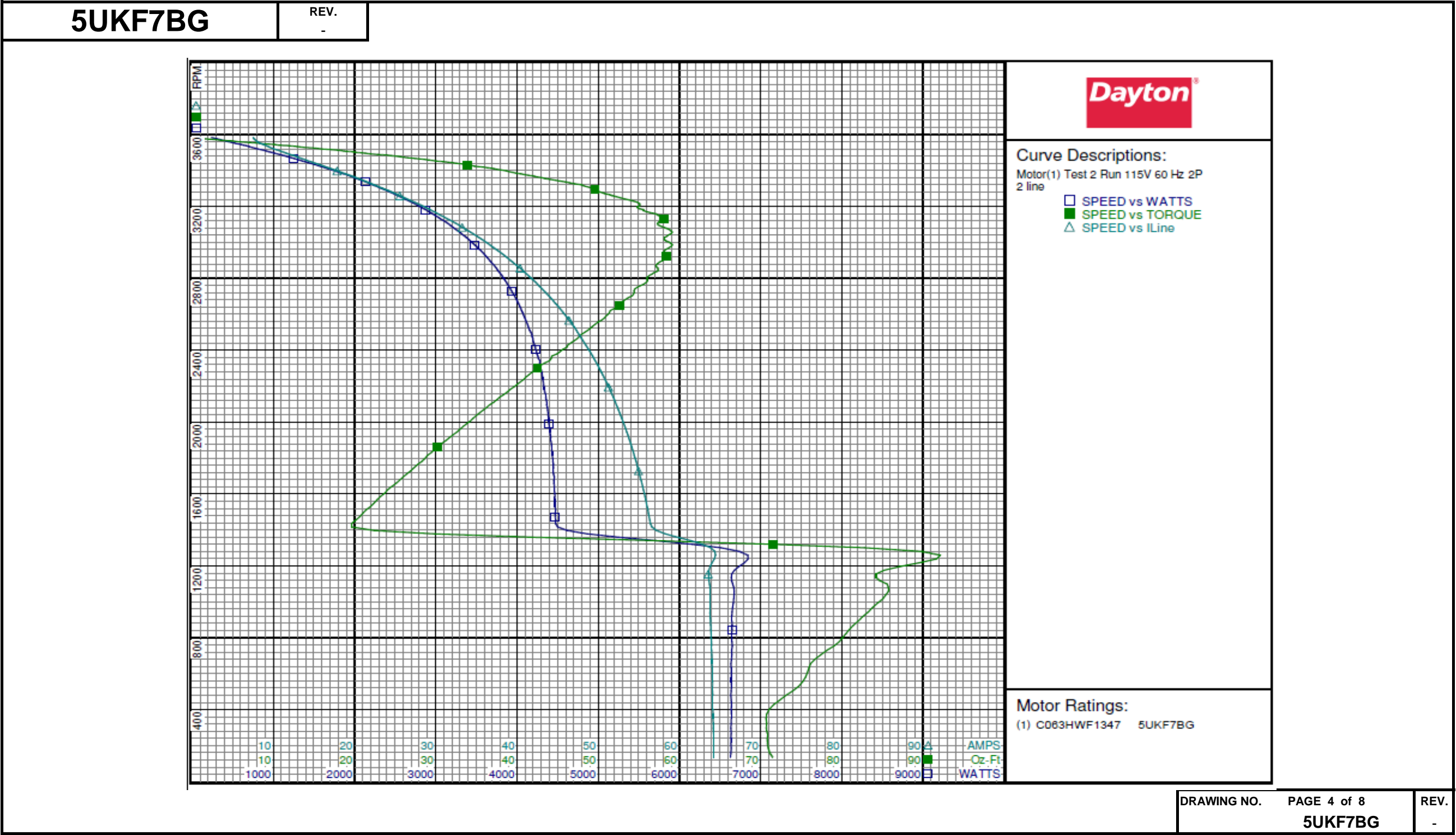
Test Type: Run Run Cap: 0
Test Number: 2 Start Cap: 519 µfd
Poles: 2 Environment: 19.9 Deg C 56 % RH 998 hPa
Volts: 115 Tested: 7/9/2015 10:37:01 AM
Hz: 60 Tested By: Sharp, Gerald
Rotation: Gear Ratio: 1:1
Special Cond: 2 line Bearing Friction: -0.51 Oz-Ft
Speed Conn: Windage Torque: -4.05 Oz-Ft
TestBoard: Amps Performance Fixture #1

Special Points	Vline (V)	Iline (A)	Watts	RPM	Tq (Oz-ft)	HP	Eff (%)	PF (%)
	115.0	7.49	238	3583	0.00	0.000	0.0	27.6
	115.0	8.76	601	3544	10.13	0.428	53.0	59.7
	115.0	11.11	951	3503	19.86	0.828	65.0	74.4
24.3 OZ-FT	115.0	12.42	1122	3483	24.30	1.008	67.0	78.5
	115.0	13.48	1255	3465	27.51	1.135	67.5	81.0
27.9 OZ-FT	115.0	13.59	1268	3464	27.90	1.150	67.7	81.1
3450 RPM	115.0	14.46	1372	3450	30.46	1.251	68.0	82.5
	115.0	16.26	1576	3423	34.79	1.418	67.1	84.3
	115.0	18.90	1865	3380	40.49	1.630	65.2	85.8
	115.0	21.56	2136	3335	45.99	1.826	63.8	86.2
	115.0	24.19	2394	3287	49.92	1.954	60.9	86.0
	115.0	26.73	2641	3236	53.75	2.070	58.5	85.9
	115.0	29.30	2873	3182	55.57	2.105	54.7	85.3
	115.0	31.92	3100	3119	57.68	2.142	51.5	84.5
	115.0	34.29	3295	3055	59.11	2.150	48.7	83.6
BDT OZ-FT	115.0	36.65	3479	2985	59.15	2.102	45.1	82.5
	115.0	36.65	3479	2985	59.15	2.102	45.1	82.5
	115.0	38.97	3648	2907	58.29	2.018	41.3	81.4
	115.0	41.19	3801	2822	56.60	1.902	37.3	80.2
	115.0	43.31	3932	2730	54.41	1.769	33.6	79.0
	115.0	45.29	4048	2630	51.97	1.627	30.0	77.7
	115.0	47.15	4146	2522	49.06	1.473	26.5	76.5
	115.0	48.80	4229	2404	45.65	1.306	23.0	75.4
	115.0	50.40	4306	2276	41.85	1.134	19.6	74.3
	115.0	51.86	4353	2138	37.89	0.964	16.5	73.0
	115.0	53.15	4393	1990	33.80	0.801	13.6	71.9
	115.0	54.35	4434	1830	29.44	0.641	10.8	70.9
	115.0	55.38	4455	1658	25.08	0.495	8.3	70.0
	115.0	56.26	4472	1473	20.67	0.363	6.0	69.1
	115.0	64.35	6738	1279	89.79	1.367	15.1	91.0
	115.0	63.77	6669	1079	85.72	1.101	12.3	90.9
	115.0	63.86	6648	845	80.92	0.814	9.1	90.5
	115.0	64.04	6638	605	75.74	0.545	6.1	90.1
	115.0	64.14	6638	349	70.66	0.293	3.3	90.0

DRAWING NO.	PAGE 3 of 8	REV.
	5UKF7BG	-

Dayton Electric Mfg. Co. Lake Forest, IL 60045 USA

Performance Data



Performance Data



5UKF7BG

REV.
-

Dayton Manufacturing Company

Motor Description

Model: C063HWF1347 5UKF7BG
 Motor ID: 1 of 3
 Poles: 2
 Volts: 115/208-230
 Frequency: 60/50
 HP: 1
 Speed: 3450/2850
 Phase: 1
 Protector:

Test Conditions

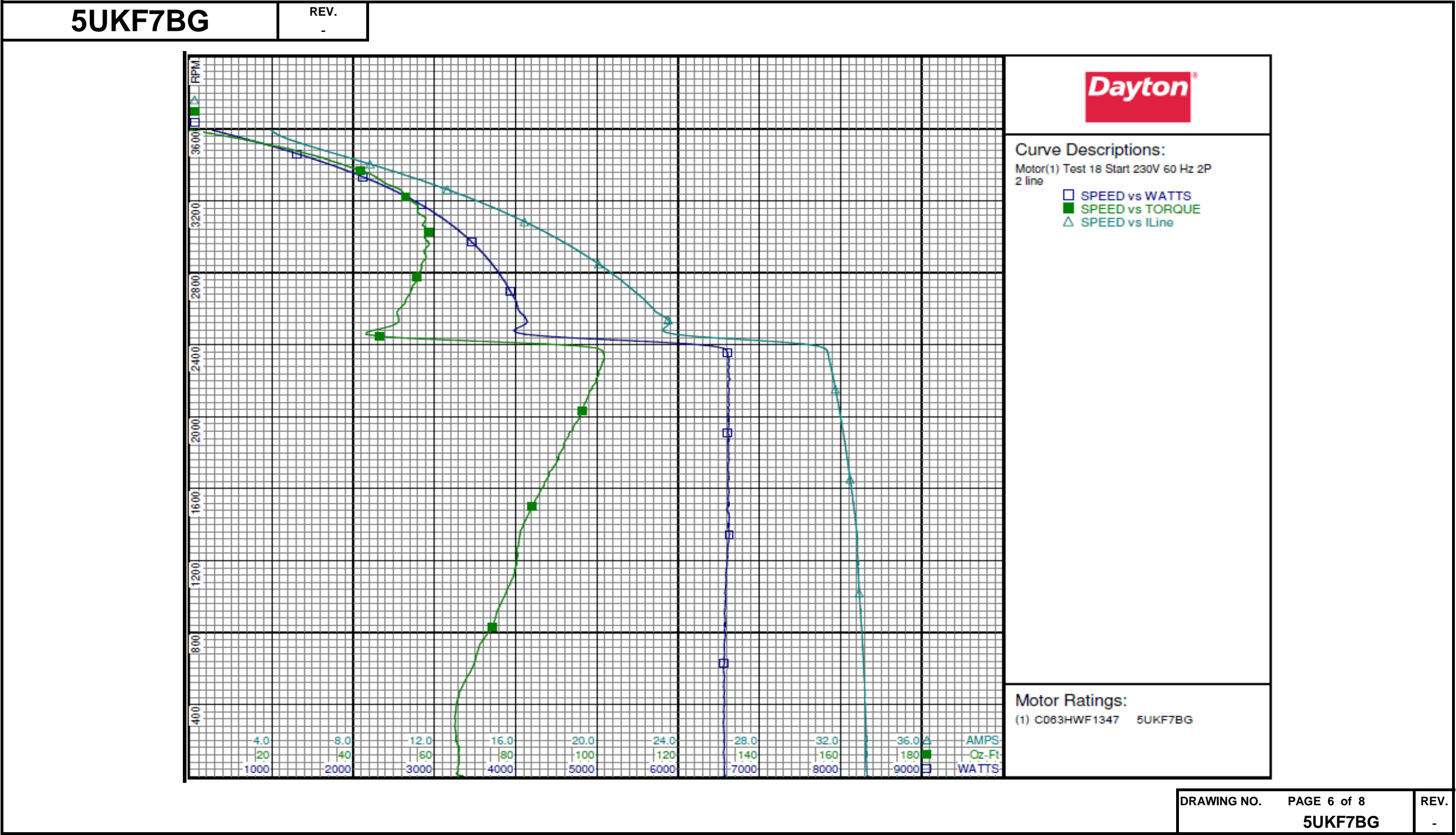
Test Type: Start
 Test Number: 18
 Poles: 2
 Volts: 230
 Hz: 60
 Rotation:
 Special Cond: 2 line
 Speed Conn:
 TestBoard: Amtps Performance Fixture #1
 Run Cap: 0
 Start Cap: 519 µfd
 Environment: 20.0 Deg C 56 % RH 997 hPa
 Tested: 7/9/2015 8:56:03 AM
 Tested By: Sharp, Gerald
 Gear Ratio: 1:1
 Bearing Friction: -0.43 Oz-Ft
 Windage Torque: -3.80 Oz-Ft

Special Points	Vline (V)	Iline (A)	Watts	RPM	Tq (Oz-ft)	HP	Eff (%)	PF (%)
	230.0	33.32	6573	5	66.81	0.004	0.0	85.8
	230.0	33.27	6571	75	66.12	0.059	0.7	85.9
PUT OZ-FT	230.0	33.25	6560	278	64.99	0.215	2.4	85.8
	230.0	33.22	6562	359	65.27	0.279	3.2	85.9
	230.0	33.13	6568	630	69.89	0.524	6.0	86.2
	230.0	33.00	6579	879	75.05	0.786	8.9	86.7
	230.0	32.88	6589	1110	79.44	1.050	11.9	87.1
	230.0	32.82	6624	1323	80.89	1.274	14.4	87.8
	230.0	32.62	6622	1522	84.54	1.532	17.3	88.2
	230.0	32.40	6612	1706	89.03	1.808	20.4	88.7
	230.0	32.17	6618	1877	92.61	2.069	23.3	89.4
	230.0	31.94	6624	2035	96.45	2.337	26.3	90.2
	230.0	31.70	6617	2182	99.51	2.584	29.1	90.8
	230.0	31.44	6626	2317	101.78	2.808	31.6	91.6
	230.0	26.05	4763	2436	53.38	1.548	24.2	79.5
	230.0	23.39	4119	2550	51.15	1.553	28.1	76.6
	230.0	22.26	3989	2658	53.19	1.683	31.5	77.9
	230.0	21.20	3855	2757	55.47	1.820	35.2	79.1
	230.0	20.09	3712	2848	56.80	1.926	38.7	80.3
	230.0	18.95	3551	2931	57.84	2.018	42.4	81.5
	230.0	17.78	3373	3006	57.93	2.073	45.9	82.5
	230.0	16.56	3179	3077	57.38	2.102	49.3	83.4
	230.0	15.37	2977	3139	55.87	2.088	52.3	84.2
	230.0	14.10	2752	3199	54.23	2.065	56.0	84.9
	230.0	12.87	2526	3253	52.02	2.014	59.5	85.3
	230.0	11.67	2291	3301	47.64	1.872	61.0	85.4
	230.0	10.48	2049	3346	44.47	1.771	64.5	85.0
	230.0	9.22	1784	3391	38.73	1.564	65.4	84.2
	230.0	8.04	1524	3430	33.42	1.365	66.8	82.4
	230.0	6.85	1248	3470	27.24	1.125	67.3	79.2
	230.0	5.72	956	3508	19.60	0.819	63.9	72.6
	230.0	4.74	660	3545	11.88	0.501	56.6	60.6
	230.0	4.08	360	3582	3.21	0.137	28.3	38.4
	230.0	3.97	267	3593	0.00	0.000	0.0	29.2

DRAWING NO.	PAGE 5 of 8	REV.
	5UKF7BG	-

Dayton Electric Mfg. Co. Lake Forest, IL 60045 USA

Performance Data



Performance Data



5UKF7BG

REV.
-

Dayton Manufacturing Company

Motor Description

Model: C063HWF1347 5UKF7BG
 Motor ID: 1 of 3
 Poles: 2
 Volts: 115/208-230
 Frequency: 60/50
 HP: 1
 Speed: 3450/2850
 Phase: 1
 Protector:

Test Conditions

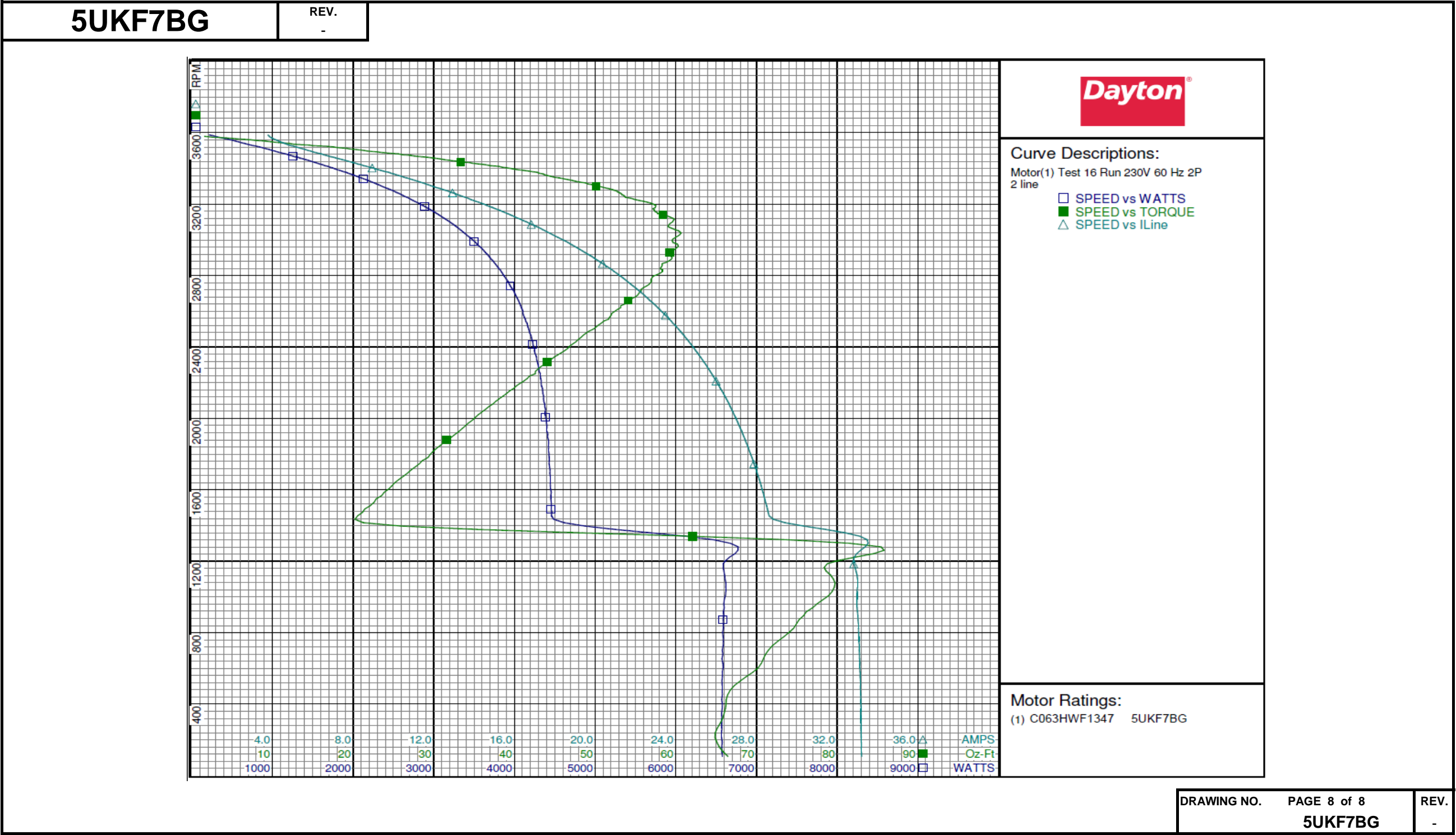
Test Type: Run
 Test Number: 16
 Poles: 2
 Volts: 230
 Hz: 60
 Rotation:
 Special Cond: 2 line
 Speed Conn:
 TestBoard: Amtps Performance Fixture #1
 Run Cap: 0
 Start Cap: 519 μ fd
 Environment: 19.8 Deg C 54 % RH 997 hPa
 Tested: 7/9/2015 8:22:28 AM
 Tested By: Sharp, Gerald
 Gear Ratio: 1:1
 Bearing Friction: -0.41 Oz-Ft
 Windage Torque: -3.87 Oz-Ft

Special Points	Vline (V)	Iline (A)	Watts	RPM	Tq (Oz-ft)	HP	Eff (%)	PF (%)
	230.0	3.78	216	3587	0.00	0.000	0.0	24.8
	230.0	4.39	576	3548	9.78	0.413	53.6	57.0
	230.0	5.52	932	3508	19.59	0.818	65.5	73.4
24.3 OZ-FT	230.0	6.24	1118	3485	24.30	1.008	67.2	78.0
	230.0	6.78	1251	3469	27.61	1.140	68.0	80.3
27.9 OZ-FT	230.0	6.82	1261	3467	27.90	1.152	68.1	80.4
3450 RPM	230.0	7.41	1400	3450	31.07	1.276	68.0	82.2
	230.0	8.12	1559	3428	34.78	1.419	67.9	83.4
	230.0	9.50	1861	3384	41.78	1.683	67.5	85.2
	230.0	10.78	2126	3342	46.01	1.831	64.2	85.8
	230.0	12.16	2401	3291	51.19	2.006	62.3	85.9
	230.0	13.42	2640	3243	53.67	2.072	58.6	85.5
	230.0	14.78	2889	3186	57.49	2.181	56.3	85.0
	230.0	16.02	3103	3127	59.26	2.206	53.0	84.2
	230.0	17.30	3309	3063	59.55	2.171	49.0	83.2
BDT OZ-FT	230.0	17.75	3381	3037	60.62	2.192	48.4	82.8
	230.0	18.55	3504	2991	59.59	2.122	45.2	82.1
	230.0	19.73	3672	2913	59.50	2.063	41.9	80.9
	230.0	20.85	3823	2830	58.36	1.966	38.4	79.7
	230.0	21.88	3948	2741	56.34	1.838	34.7	78.4
	230.0	22.90	4067	2641	53.73	1.689	31.0	77.2
	230.0	23.85	4155	2532	50.74	1.530	27.5	75.7
	230.0	24.74	4228	2416	47.21	1.358	24.0	74.3
	230.0	25.54	4296	2290	43.29	1.180	20.5	73.1
	230.0	26.28	4349	2153	39.39	1.010	17.3	71.9
	230.0	26.95	4386	2006	35.16	0.839	14.3	70.8
	230.0	27.55	4419	1847	30.77	0.676	11.4	69.7
	230.0	28.08	4442	1675	26.23	0.523	8.8	68.8
	230.0	28.54	4454	1492	21.44	0.381	6.4	67.9
	230.0	33.53	6674	1300	81.59	1.263	14.1	86.5
	230.0	33.00	6610	1099	79.54	1.041	11.7	87.1
	230.0	33.03	6586	872	75.26	0.781	8.8	86.7
	230.0	33.12	6583	629	70.61	0.528	6.0	86.4
	230.0	33.18	6573	373	66.14	0.294	3.3	86.1
	230.0	33.21	6577	106	66.46	0.084	1.0	86.1

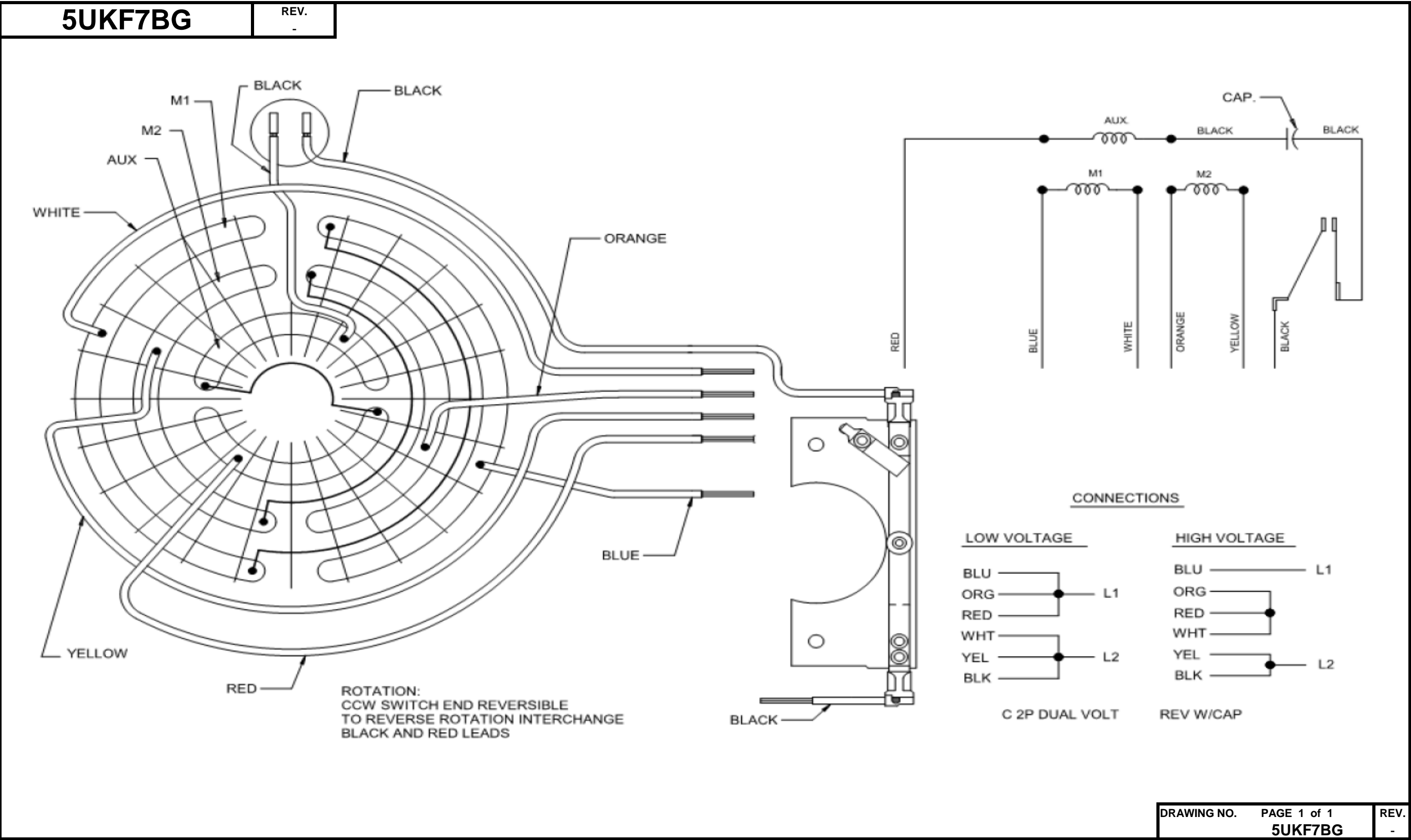
DRAWING NO.	PAGE 7 of 8	REV.
	5UKF7BG	-

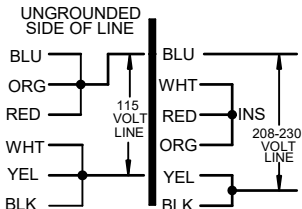
Dayton Electric Mfg. Co. Lake Forest, IL 60045 USA

Performance Data



Wiring Diagram



Dayton[®]**INDUSTRIAL MOTOR****HP:** 1.0
VOLTS: 115/208-230**Part No** 5UKF7BG**AMPS:** 13.6/6.9-6.8**RPM:** 3450**DUTY:** CONT**SF:** 1.0**KVA CODE:** J**ENCL:** TEFC**THERMALLY PROTECTED:** NONE**MFG. NO.** **PROT. CODE:** **MTR REF:** C63HWF-1347**PH:** 1**HZ:** 60**FR:** 56**INS CL:** B**AMB:** 40 °C**SFA:** 13.6/6.9-6.8**AVG. F.L.
EFF.** 66.7**Disconnect Power Before Making Any
Electrical Connections or Changes****CONNECTIONS**

MOTOR IS CCW ROTATION LEAD END
TO REVERSE ROTATION INTERCHANGE
RED AND BLACK LEADS



E47479



258501

Mfd for Dayton Electric Mfg. Co., Lake Forest, IL 60045 USA

Made in Mexico