

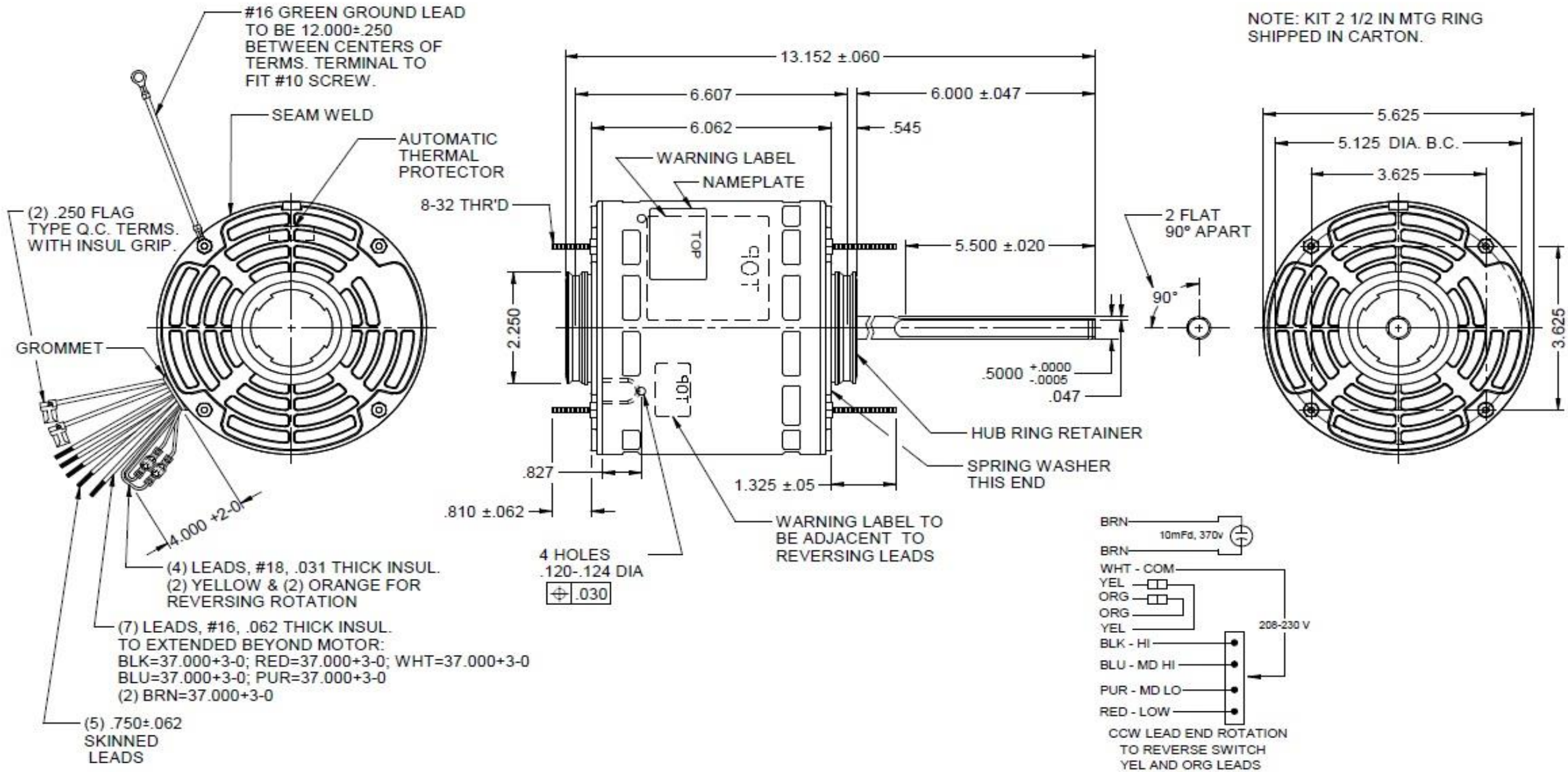
Dimensional Drawing

5RHU1BG

REV.

-

MODEL	REF	CUSTOMER	HP	VOLTS	AMPS	HZ	RPM	ROTATION	CUSTOMER PN	DESCRIPTION / REMARKS
K55HXJIT-2453	E42964	GRAINGER	1/2-1/5	208-230	3.9-1.4	60	825/4 SPD	CCW LEAD END REV	5RHU1BG	DIRECT DRIVE, STUD MTG., OAO.



DRAWING NO.	PAGE 1 of 1	REV.
	5RHU1BG	-

Performance Data



5RHU1BG

REV.
-

MOTOR PERFORMANCE

HP:	1/2-1/5 HP	1/2HP		1/3HP		1/4HP		1/5HP	
Poles:	8P								
No. of Speeds:	4	HIGH		HIGH		LOW		LOW	
Volts:	208-230	208	230	208	230	208	230	208	230
HZ:	60	60	60	60	60	60	60	60	60
Service Factor:									
Efficiency:	@ Rated Load								
Power Factor:	@ Rated Load								
Amps:	@ No Load								
	@ Rated Load	3.961	3.918	2.6	2.6	1.9	1.9	1.5	1.4
	@ Service Factor	3.961	3.918	2.6	2.6	1.9	1.9	1.5	1.4
	@ Locked Rotor	7.87	8.78	5.87	6.5	4.6	5.1	3.7	4.1
RPM:	@ Rated Load	796	819	814	834	824	841	827	842
Ambient (°C):	60								
Torques:	Breakdown	63.5	77.8	49.8	61.2	40.7	50.2	34.3	42.3
	Locked Rotor	15.26	20.53	13.47	17.2	13.33	15.48	8.78	14.17
	Pull-Up	15.26	19.86	12.27	17.2	10.2	15.5	8.8	12.3
	Rated Load	50.8	50.92	34.4	33.5	25.5	25	20.3	19.9
	Service Factor	50.8	50.92	34.4	33.5	25.5	25	20.3	19.9
Watts:	Rated Load	671.6	695.4	464	484	352	374	286	305
KVA Code:									
Temperature Rise:	@ Rated Load								
	@ Service Factor								
Thermal Protector:	Trip Temp (°C)								
Winding Material:	Start (Auxiliary)								
	Run (Main)								
Capacitor(s):	Start (MFD / Volts)								
	No. of Start Capacitors								
	Run (MFD / Volts)								
	No. of Run Capacitors								

PERFORMANCE DATA:

HP:									
Poles:									
Volts:									
HZ:									
Efficiency:	@ Rated Load								
Power Factor:	@ Rated Load								
Amps:	@ No Load								
	@ Rated Load								
	@ Service Factor								
	@ Locked Rotor								
Torques:	@ Rated Load								
	Locked Rotor								
	Pull-Up								
	Rated Load								
	Service Factor								
Watts:	@ Rated Load								
Temperature Rise:	@ Rated Load								
	@ Service Factor								

DRAWING NO. PAGE 1 of 1 REV.
5RHU1BG -

Performance Data



5RHU1BG

REV.

-

Dayton Manufacturing Company

Motor Description

Model: K055JIT2453 5RHU1BG
 Motor ID:
 Poles: 8
 Volts: 208-230
 Frequency: 60
 HP: 1/2
 Speed: 825
 Phase: 1
 Protector: 7AM036-A5

Test Conditions

Test Type: Start
 Test Number: 1
 Poles: 8
 Volts: 208
 Hz: 60
 Rotation: CCW
 Special Cond:
 Speed Conn: M1
 TestBoard: CMD InLine Three Phase #2 Fixture #1
 Run Cap: 10
 Start Cap: 0µfd
 Environment: 24.2 Deg C 64 % RH 965 hPa
 Tested: 5/18/2016 7:36:17 AM
 Tested By: Bribiesca, Griselda
 Gear Ratio: 1:1
 Bearing Friction: -1.27 Oz-Ft
 Windage Torque: -3.12 Oz-Ft

Special Points PUT OZ-FT	Vline (V)	Vaux (V)	Vcap (V)	Iline (A)	Imain (A)	Iaux (A)	Watts	RPM	Tq(Oz-ft)	HP	Eff(%)	PF(%)	Cap
	208.0	41.5	229.2	7.865	8.335	0.888	1262.2	0	15.26	0.000	0.0	77.2	10.3
	208.0	41.5	229.2	7.865	8.335	0.888	1262.2	0	15.26	0.000	0.0	77.2	10.3
	208.0	46.3	225.9	7.862	8.299	0.878	1266.2	97	18.59	0.021	1.3	77.4	10.3
	208.0	52.0	223.2	7.786	8.196	0.865	1259.6	172	22.54	0.046	2.7	77.8	10.3
	208.0	58.3	221.3	7.693	8.065	0.858	1251.5	241	26.58	0.076	4.6	78.2	10.3
	208.0	65.3	220.0	7.549	7.891	0.852	1237.5	311	32.75	0.121	7.3	78.8	10.3
	208.0	72.4	219.2	7.397	7.702	0.851	1221.6	369	37.17	0.163	10.0	79.4	10.3
	208.0	80.4	219.0	7.209	7.476	0.851	1200.6	425	42.09	0.213	13.2	80.1	10.3
	208.0	89.3	219.7	6.980	7.205	0.852	1173.3	479	47.26	0.270	17.1	80.8	10.3
	208.0	98.2	221.4	6.741	6.925	0.857	1143.6	527	50.94	0.319	20.8	81.6	10.3
	208.0	108.0	224.3	6.461	6.607	0.870	1106.9	573	55.65	0.380	25.6	82.4	10.3
	208.0	117.8	228.2	6.172	6.275	0.881	1065.0	613	58.29	0.425	29.8	83.0	10.2
	208.0	130.4	234.6	5.763	5.828	0.908	1004.3	658	61.53	0.482	35.8	83.8	10.3
	208.0	139.1	240.2	5.468	5.525	0.928	955.3	687	61.12	0.500	39.0	84.0	10.2
	208.0	149.8	247.9	5.105	5.137	0.952	893.7	717	60.55	0.517	43.2	84.2	10.2
	208.0	160.5	256.4	4.732	4.747	0.987	826.8	745	58.56	0.520	46.9	84.0	10.2
	208.0	170.8	265.8	4.352	4.371	1.026	754.6	770	55.37	0.507	50.2	83.4	10.2
	208.0	180.9	275.7	3.985	4.019	1.059	680.3	793	50.27	0.474	52.0	82.1	10.2
	208.0	189.3	284.8	3.668	3.741	1.096	611.2	811	44.67	0.431	52.7	80.1	10.2
	208.0	197.8	294.1	3.369	3.496	1.134	541.1	828	38.38	0.378	52.1	77.2	10.2
	208.0	204.7	302.2	3.126	3.330	1.161	480.1	842	31.92	0.320	49.7	73.9	10.2
	208.0	211.1	310.7	2.917	3.219	1.194	416.5	856	24.32	0.248	44.4	68.7	10.2
	208.0	216.3	317.6	2.768	3.173	1.217	364.6	865	17.79	0.183	37.5	63.3	10.2
	208.0	220.7	323.4	2.669	3.172	1.239	320.9	874	11.68	0.121	28.2	57.8	10.2
	208.0	223.8	327.9	2.606	3.188	1.259	284.7	881	6.70	0.070	18.4	52.5	10.2
	208.0	226.0	331.5	2.580	3.222	1.274	256.3	887	2.53	0.027	7.8	47.7	10.2
	208.0	227.5	333.6	2.566	3.245	1.277	241.6	890	0.00	0.000	0.0	45.3	10.2

DRAWING NO. PAGE 1 of 32 REV.
5RHU1BG -

Dayton Electric Mfg. Co. Lake Forest, IL 60045 USA

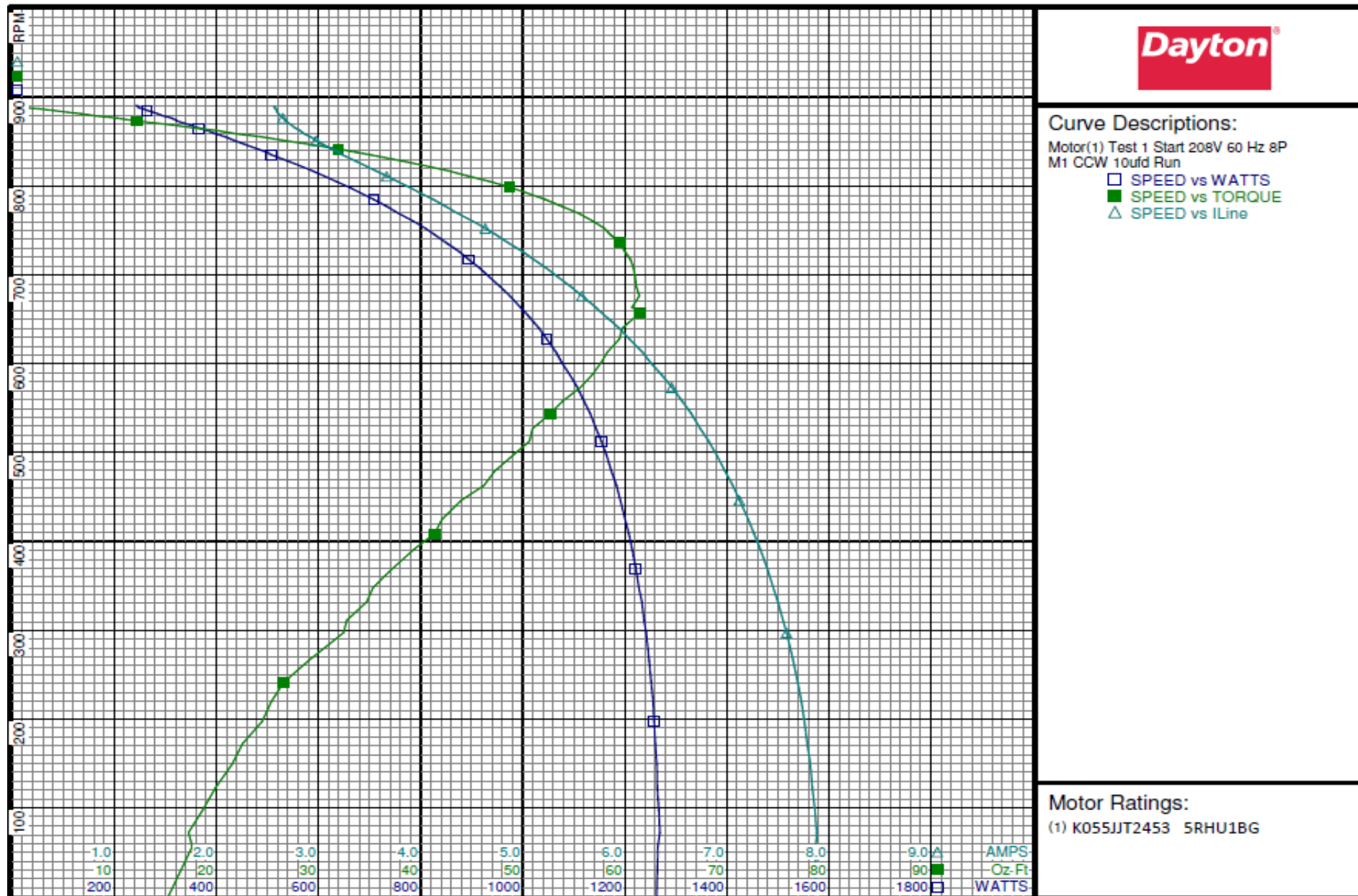
Performance Data



5RHU1BG

REV.

-



DRAWING NO.	PAGE 2 of 32	REV.
5RHU1BG		-

Dayton Electric Mfg. Co. Lake Forest, IL 60045 USA

Performance Data



5RHU1BG

REV.

-

Dayton Manufacturing Company

Motor Description

Model: K055JIT2453 5RHU1BG
 Motor ID:
 Poles: 8
 Volts: 208-230
 Frequency: 60
 HP: 1/2
 Speed: 825
 Phase: 1
 Protector: 7AM036-A5

Test Conditions

Test Type: Run
 Test Number: 9
 Poles: 8
 Volts: 208
 Hz: 60
 Rotation: CCW
 Special Cond:
 Speed Conn: M1
 TestBoard: CMD InLine Three Phase #2 Fixture #1
 Run Cap: 10
 Start Cap: 0µfd
 Environment: 24.2 Deg C 64 % RH 965 hPa
 Tested: 5/18/2016 7:33:17 AM
 Tested By: Bribiesca, Griselda
 Gear Ratio: 1:1
 Bearing Friction: -1.35 Oz-Ft
 Windage Torque: -3.28 Oz-Ft

Special Points	Vline (V)	Vaux (V)	Vcap (V)	Iline (A)	Imain (A)	Iaux (A)	Watts	RPM	Tq(Oz-ft)	HP	Eff (%)	PF (%)	Cap
	208.0	226.9	333.1	2.578	3.259	1.268	237.9	888	0.00	0.000	0.0	44.4	10.1
	208.0	226.0	331.7	2.586	3.245	1.263	247.9	886	1.67	0.018	5.3	46.1	10.1
	208.0	224.6	329.2	2.599	3.208	1.254	267.0	882	4.70	0.049	13.8	49.4	10.1
	208.0	221.9	325.3	2.647	3.190	1.238	298.7	877	9.01	0.094	23.5	54.2	10.1
	208.0	220.1	322.4	2.684	3.175	1.228	320.9	871	12.42	0.129	29.9	57.5	10.1
	208.0	218.0	319.6	2.734	3.181	1.217	342.5	866	15.75	0.162	35.4	60.2	10.1
	208.0	213.9	313.9	2.846	3.206	1.196	386.7	859	21.44	0.219	42.3	65.3	10.1
	208.0	209.7	308.4	2.971	3.254	1.175	429.4	851	26.50	0.268	46.6	69.5	10.1
	208.0	205.8	303.4	3.099	3.322	1.156	466.6	844	30.94	0.311	49.7	72.4	10.1
	208.0	199.1	295.2	3.338	3.478	1.124	530.2	831	37.53	0.371	52.2	76.4	10.1
	208.0	195.5	290.9	3.469	3.575	1.108	562.1	823	41.32	0.405	53.7	77.9	10.1
	208.0	189.6	284.1	3.696	3.758	1.082	614.0	811	45.90	0.443	53.9	79.9	10.1
	208.0	183.8	277.8	3.913	3.946	1.059	661.7	799	50.01	0.475	53.6	81.3	10.1
50.8 OZ-FT	208.0	182.5	276.5	3.961	3.989	1.054	671.6	796	50.80	0.481	53.5	81.5	10.1
	208.0	177.5	271.3	4.149	4.160	1.034	711.1	785	53.76	0.502	52.7	82.4	10.1
	208.0	171.5	265.5	4.376	4.377	1.012	755.8	772	56.60	0.520	51.3	83.0	10.1
	208.0	163.9	258.5	4.656	4.654	0.986	809.8	754	59.46	0.534	49.2	83.6	10.1
	208.0	155.1	251.1	4.982	4.986	0.956	868.4	733	61.09	0.533	45.8	83.8	10.1
	208.0	149.4	246.7	5.178	5.191	0.940	903.6	718	62.62	0.535	44.2	83.9	10.1
	208.0	142.6	241.8	5.413	5.441	0.922	943.6	699	63.22	0.526	41.6	83.8	10.1
BDT OZ-FT	208.0	135.0	236.7	5.674	5.722	0.903	986.5	677	63.47	0.511	38.7	83.6	10.1
	208.0	135.0	236.7	5.674	5.722	0.903	986.5	677	63.47	0.511	38.7	83.6	10.1
	208.0	127.8	232.6	5.908	5.978	0.887	1022.7	654	62.44	0.486	35.4	83.2	10.1
	208.0	121.5	229.2	6.108	6.200	0.874	1053.4	631	61.82	0.465	32.9	82.9	10.1
	208.0	113.9	226.0	6.344	6.464	0.862	1087.7	603	59.84	0.430	29.5	82.4	10.1
	208.0	107.5	223.5	6.534	6.679	0.852	1114.1	577	57.88	0.397	26.6	82.0	10.1
	208.0	101.0	221.5	6.724	6.894	0.844	1139.3	548	55.24	0.360	23.6	81.5	10.1
	208.0	94.7	220.0	6.900	7.097	0.838	1161.8	517	52.66	0.324	20.8	81.0	10.1
	208.0	88.9	219.2	7.053	7.276	0.835	1180.5	484	49.66	0.286	18.1	80.5	10.1
	208.0	83.4	218.7	7.189	7.437	0.833	1196.7	452	47.23	0.254	15.9	80.0	10.1
	208.0	77.5	218.6	7.332	7.607	0.833	1212.3	413	43.25	0.213	13.1	79.5	10.1
	208.0	72.3	218.8	7.450	7.749	0.834	1225.3	375	40.30	0.180	11.0	79.1	10.1
	208.0	66.6	219.5	7.571	7.898	0.835	1237.2	325	34.61	0.134	8.1	78.6	10.1
	208.0	62.8	220.2	7.641	7.987	0.839	1244.6	292	33.10	0.115	6.9	78.3	10.1
	208.0	58.5	221.0	7.715	8.081	0.841	1251.7	250	30.24	0.090	5.4	78.0	10.1
	208.0	54.3	222.2	7.781	8.169	0.846	1257.9	201	27.29	0.065	3.9	77.7	10.1
	208.0	49.9	224.1	7.823	8.237	0.854	1260.1	152	23.31	0.042	2.5	77.4	10.1
	208.0	46.6	225.6	7.866	8.297	0.859	1265.7	106	21.79	0.027	1.6	77.4	10.1
	208.0	43.3	228.1	7.859	8.314	0.869	1261.7	50	19.21	0.011	0.7	77.2	10.1

DRAWING NO. PAGE 3 of 32 REV.
5RHU1BG -

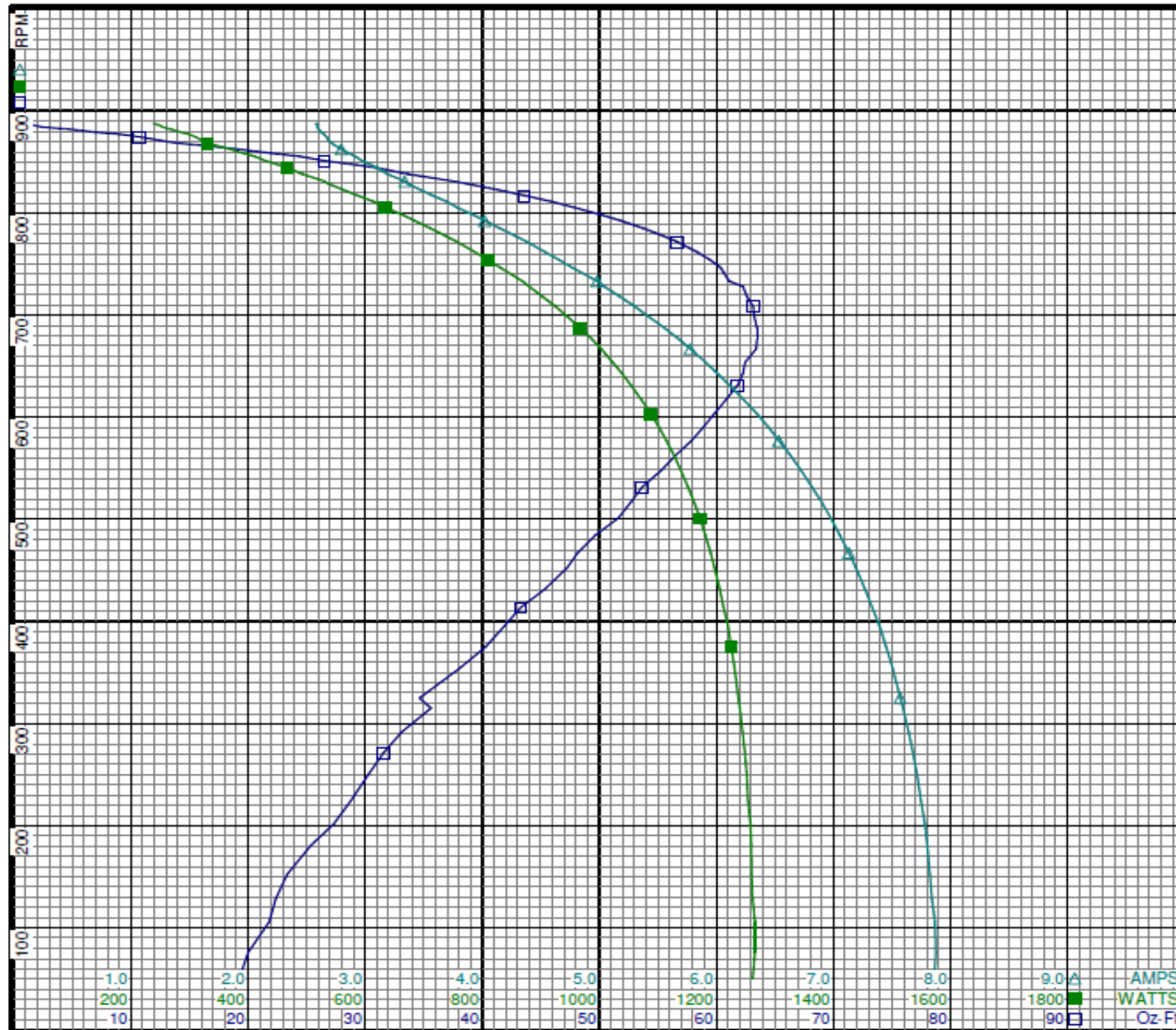
Performance Data



5RHU1BG

REV.

-



Curve Descriptions:

Motor(1) Test 9 Run 208V 60 Hz 8P
M1 CCW 10ufd Run

- SPEED vs TORQUE
- SPEED vs WATTS
- △ SPEED vs ILine

Motor Ratings:

(1) K055JIT2453 5RHU1BG

DRAWING NO.	PAGE 4 of 32	REV.
5RHU1BG		-

Dayton Electric Mfg. Co. Lake Forest, IL 60045 USA

Performance Data



5RHU1BG

REV.

-

Dayton Manufacturing Company

Motor Description

Model: K055JIT2453 5RHU1BG
 Motor ID:
 Poles: 8
 Volts: 208-230
 Frequency: 60
 HP: 1/2
 Speed: 825
 Phase: 1
 Protector: 7AM036-A5

Test Conditions

Test Type: Start
 Test Number: 2
 Poles: 8
 Volts: 208
 Hz: 60
 Rotation: CCW
 Special Cond:
 Speed Conn: M2
 TestBoard: CMD InLine Three Phase #2 Fixture #1
 Run Cap: 10
 Start Cap: 0µfd
 Environment: 24.2 Deg C 64 % RH 965 hPa
 Tested: 5/18/2016 8:01:30 AM
 Tested By: Bribiesca, Griselda
 Gear Ratio: 1:1
 Bearing Friction: -1.33 Oz-Ft
 Windage Torque: -2.99 Oz-Ft

Special Points	Vline (V)	Vaux (V)	Vcap (V)	Iline (A)	Imain (A)	Iaux (A)	Watts	RPM	Tq (Oz-ft)	HP	Eff (%)	PF (%)	Cap
PUT OZ-FT	208.0	41.9	228.4	5.874	6.300	0.868	991.0	15	13.47	0.002	0.2	81.1	10.1
	208.0	43.3	229.2	5.880	6.302	0.871	994.7	39	12.27	0.006	0.4	81.3	10.1
	208.0	44.6	227.4	5.865	6.274	0.865	991.3	68	13.87	0.011	0.8	81.3	10.1
	208.0	47.7	225.9	5.849	6.239	0.859	990.8	120	15.31	0.022	1.6	81.4	10.1
	208.0	51.1	224.3	5.812	6.182	0.853	987.6	172	18.58	0.038	2.9	81.7	10.1
	208.0	54.9	223.1	5.762	6.111	0.848	982.5	219	21.06	0.055	4.2	82.0	10.1
	208.0	58.9	222.2	5.704	6.031	0.845	976.7	266	23.83	0.076	5.8	82.3	10.1
	208.0	63.0	221.5	5.638	5.943	0.842	969.5	309	26.22	0.097	7.4	82.7	10.1
	208.0	68.0	220.9	5.539	5.819	0.841	958.7	360	30.78	0.132	10.3	83.2	10.1
	208.0	71.8	220.7	5.466	5.727	0.839	949.4	389	31.61	0.147	11.5	83.5	10.1
	208.0	76.5	220.7	5.367	5.605	0.839	937.3	428	34.10	0.174	13.8	84.0	10.1
	208.0	81.3	221.1	5.266	5.481	0.840	924.3	462	36.08	0.198	16.0	84.4	10.1
	208.0	86.8	221.7	5.139	5.329	0.842	907.5	497	38.91	0.230	18.9	84.9	10.1
	208.0	92.2	222.8	5.012	5.178	0.847	890.3	529	41.12	0.259	21.7	85.4	10.1
	208.0	97.5	224.3	4.884	5.028	0.852	871.8	558	42.40	0.282	24.1	85.8	10.1
	208.0	103.7	226.2	4.729	4.847	0.859	849.1	588	44.46	0.311	27.3	86.3	10.1
	208.0	109.7	228.6	4.573	4.667	0.869	825.4	615	45.87	0.336	30.4	86.8	10.1
	208.0	115.8	231.5	4.411	4.484	0.880	799.7	640	46.73	0.356	33.2	87.2	10.1
	208.0	122.1	234.7	4.241	4.292	0.892	772.3	664	47.63	0.377	36.4	87.5	10.1
	208.0	128.2	238.4	4.068	4.100	0.906	743.4	686	47.83	0.391	39.2	87.9	10.1
	208.0	134.5	242.6	3.884	3.902	0.922	711.4	707	47.37	0.399	41.8	88.0	10.1
	208.0	141.0	247.2	3.696	3.701	0.939	677.7	727	46.69	0.404	44.5	88.2	10.1
	208.0	147.5	252.4	3.496	3.495	0.960	640.8	746	45.43	0.403	46.9	88.1	10.1
	208.0	152.9	257.2	3.319	3.330	0.978	607.2	762	43.91	0.398	48.9	88.0	10.1
	208.0	159.2	262.8	3.121	3.133	0.999	569.2	777	41.67	0.386	50.5	87.7	10.1
	208.0	164.9	268.3	2.939	2.965	1.020	532.3	792	39.12	0.369	51.7	87.1	10.1
	208.0	169.9	273.3	2.779	2.826	1.039	499.0	804	36.54	0.350	52.3	86.3	10.1
	208.0	175.5	279.2	2.599	2.679	1.062	460.2	816	33.11	0.322	52.2	85.1	10.1
	208.0	180.5	284.8	2.436	2.560	1.083	423.6	828	29.54	0.291	51.3	83.6	10.1
	208.0	184.8	289.8	2.300	2.474	1.102	391.1	838	26.20	0.261	49.8	81.7	10.1
	208.0	189.0	294.8	2.173	2.404	1.121	358.4	847	22.31	0.225	46.8	79.3	10.1
	208.0	193.1	299.9	2.053	2.355	1.141	325.8	856	18.37	0.187	42.8	76.3	10.1
	208.0	195.8	303.0	1.980	2.327	1.153	305.2	860	15.96	0.163	39.9	74.1	10.1
	208.0	199.4	307.8	1.886	2.314	1.171	274.5	869	11.74	0.121	33.0	70.0	10.1
	208.0	201.9	311.2	1.827	2.316	1.184	252.2	874	8.63	0.090	26.6	66.4	10.1
	208.0	204.1	313.9	1.781	2.319	1.194	235.5	879	6.08	0.064	20.2	63.6	10.1
	208.0	205.8	316.3	1.747	2.333	1.204	219.3	883	3.66	0.038	13.1	60.3	10.1
	208.0	207.6	318.7	1.719	2.348	1.213	204.0	887	1.26	0.013	4.9	57.1	10.1
	208.0	208.2	319.9	1.709	2.364	1.217	196.0	889	0.00	0.000	0.0	55.1	10.1

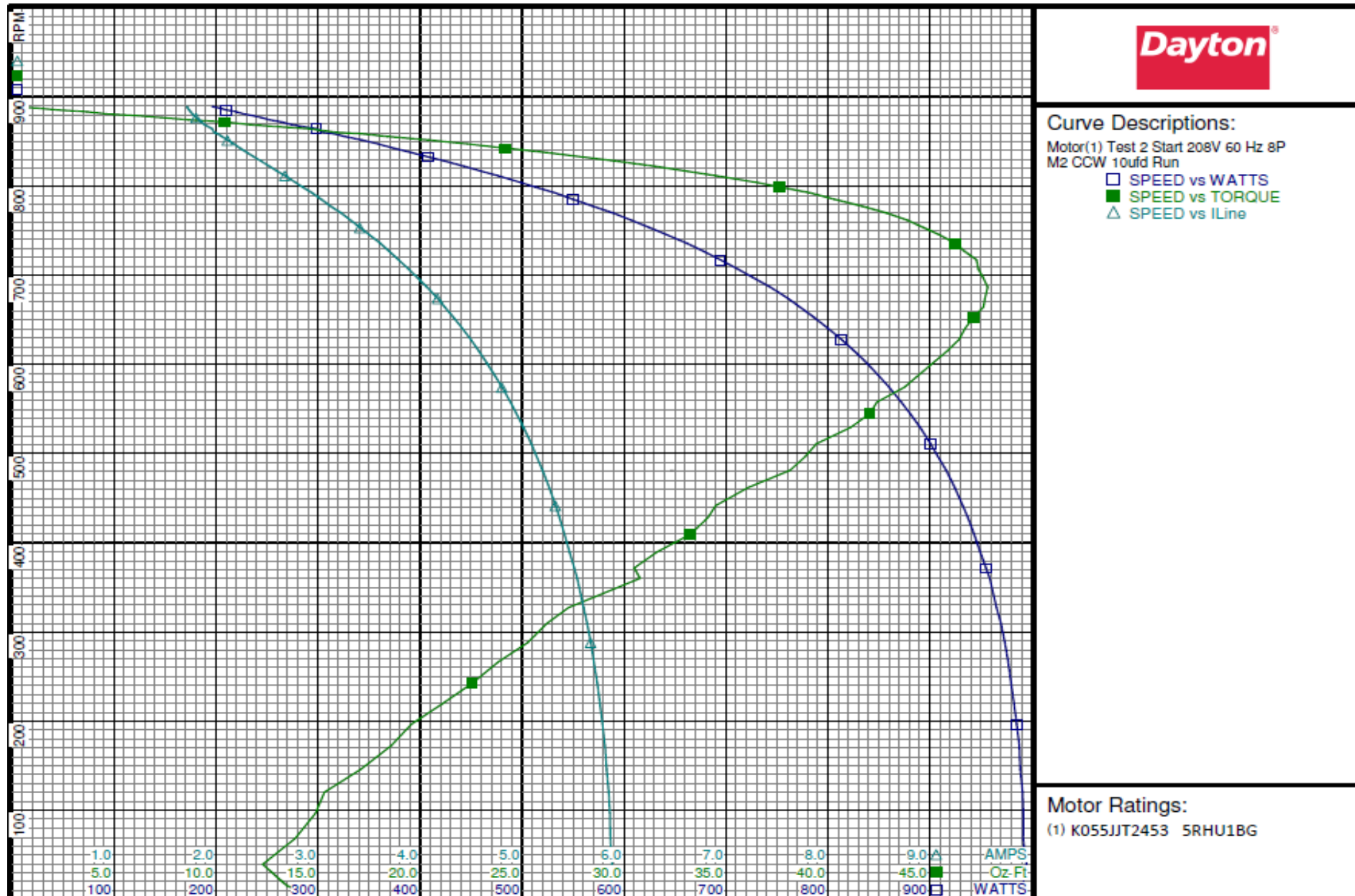
Performance Data



5RHU1BG

REV.

-



DRAWING NO.	PAGE 6 of 32	REV.
5RHU1BG		-

Dayton Electric Mfg. Co. Lake Forest, IL 60045 USA

Performance Data



5RHU1BG

REV.

-

Dayton Manufacturing Company

Motor Description

Model: K055JIT2453 5RHU1BG
 Motor ID:
 Poles: 8
 Volts: 208-230
 Frequency: 60
 HP: 1/2
 Speed: 825
 Phase: 1
 Protector: 7AM036-A5

Test Conditions

Test Type: Run
 Test Number: 10
 Poles: 8
 Volts: 208
 Hz: 60
 Rotation: CCW
 Special Cond:
 Speed Conn: M2
 TestBoard: CMD InLine Three Phase #2 Fixture #1
 Run Cap: 10
 Start Cap: 0µfd
 Environment: 24.2 Deg C 64 % RH 965 hPa
 Tested: 5/18/2016 8:09:21 AM
 Tested By: Rivera, Victor
 Gear Ratio: 1:1
 Bearing Friction: -1.20 Oz-Ft
 Windage Torque: -2.69 Oz-Ft

Special Points	Vline (V)	Vaux (V)	Vcap (V)	Iline (A)	Imain (A)	Iaux (A)	Watts	RPM	Tq(Oz-ft)	HP	Eff(%)	PF(%)	Cap
	208.0	208.8	320.5	1.704	2.370	1.219	191.9	886	0.00	0.000	0.0	54.2	10.1
	208.0	208.2	319.5	1.714	2.359	1.215	198.8	884	0.92	0.010	3.6	55.8	10.1
	208.0	207.3	318.4	1.727	2.354	1.211	205.1	879	1.87	0.020	7.1	57.1	10.1
	208.0	204.2	313.6	1.783	2.315	1.194	235.3	874	7.27	0.076	24.0	63.4	10.1
	208.0	200.2	308.5	1.873	2.315	1.174	269.3	868	11.59	0.120	33.2	69.1	10.1
	208.0	197.2	304.5	1.949	2.323	1.159	294.7	862	14.90	0.153	38.7	72.7	10.1
	208.0	193.9	300.2	2.041	2.347	1.142	322.5	855	18.66	0.190	43.9	76.0	10.1
	208.0	190.4	295.6	2.146	2.386	1.125	352.0	847	22.58	0.228	48.2	78.9	10.1
	208.0	186.5	291.0	2.264	2.448	1.107	382.3	839	26.17	0.261	51.0	81.2	10.1
	208.0	182.3	286.0	2.393	2.525	1.089	413.9	829	29.61	0.292	52.7	83.1	10.1
	208.0	176.9	280.0	2.567	2.650	1.066	453.5	817	33.41	0.325	53.4	84.9	10.1
33.75 OZ-FT	208.0	176.3	279.5	2.585	2.664	1.064	457.2	816	33.75	0.328	53.5	85.0	10.1
0.333 HP	208.0	175.3	278.4	2.617	2.689	1.060	464.2	814	34.39	0.333	53.5	85.3	10.1
	208.0	172.1	274.9	2.720	2.770	1.047	487.1	806	36.89	0.354	54.2	86.1	10.1
	208.0	166.3	269.0	2.907	2.929	1.024	526.4	792	40.18	0.379	53.7	87.1	10.1
	208.0	160.1	263.0	3.104	3.109	1.001	566.8	777	43.04	0.398	52.4	87.8	10.1
	208.0	154.7	258.2	3.275	3.273	0.983	599.9	764	45.07	0.410	51.0	88.1	10.1
48.14 OZ-FT	208.0	148.0	252.3	3.485	3.482	0.961	640.3	746	47.12	0.418	48.7	88.3	10.1
	208.0	143.3	248.7	3.628	3.629	0.947	666.6	732	48.14	0.420	47.0	88.3	10.1
	208.0	141.7	247.4	3.676	3.679	0.942	675.4	728	48.44	0.420	46.3	88.3	10.1
	208.0	135.4	242.8	3.862	3.876	0.925	708.9	709	49.26	0.416	43.7	88.3	10.1
	208.0	128.7	238.4	4.057	4.087	0.908	742.9	687	49.77	0.407	40.9	88.0	10.1
BDT OZ-FT	208.0	126.0	236.6	4.135	4.172	0.901	756.5	678	49.80	0.402	39.6	87.9	10.1
	208.0	122.3	234.5	4.239	4.287	0.893	773.4	665	49.49	0.392	37.8	87.7	10.1
	208.0	116.4	231.5	4.395	4.462	0.882	799.1	643	49.23	0.377	35.2	87.4	10.1
	208.0	110.0	228.5	4.569	4.660	0.870	826.7	617	48.03	0.353	31.8	87.0	10.1
	208.0	104.0	226.1	4.724	4.838	0.862	850.5	590	46.74	0.328	28.8	86.6	10.1
	208.0	98.4	224.2	4.862	4.999	0.854	870.8	563	45.36	0.304	26.0	86.1	10.1
	208.0	92.6	222.8	5.000	5.162	0.848	890.2	531	43.15	0.273	22.9	85.6	10.1
	208.0	87.2	221.6	5.126	5.313	0.844	907.9	500	41.37	0.246	20.2	85.2	10.1
	208.0	82.3	221.1	5.232	5.441	0.843	922.2	469	39.30	0.219	17.7	84.7	10.1
	208.0	77.1	220.8	5.343	5.576	0.840	936.2	431	36.46	0.187	14.9	84.2	10.1
	208.0	72.3	220.7	5.438	5.695	0.841	948.3	393	34.14	0.160	12.6	83.8	10.1
	208.0	68.0	221.0	5.519	5.797	0.842	958.2	356	32.02	0.136	10.6	83.5	10.1
	208.0	63.4	221.6	5.596	5.897	0.845	966.9	313	29.26	0.109	8.4	83.1	10.1
	208.0	59.5	222.2	5.661	5.981	0.846	974.5	270	26.82	0.086	6.6	82.8	10.1
	208.0	55.6	223.2	5.713	6.054	0.850	980.0	225	24.45	0.065	5.0	82.5	10.1
	208.0	52.0	224.2	5.755	6.116	0.853	984.2	178	21.39	0.045	3.4	82.2	10.1
	208.0	48.5	225.6	5.780	6.161	0.859	986.1	129	19.41	0.030	2.3	82.0	10.1
	208.0	45.6	227.0	5.808	6.205	0.864	990.0	80	18.51	0.018	1.3	81.9	10.1

DRAWING NO.	PAGE 7 of 32	REV.
5RHU1BG		-

Dayton Electric Mfg. Co. Lake Forest, IL 60045 USA

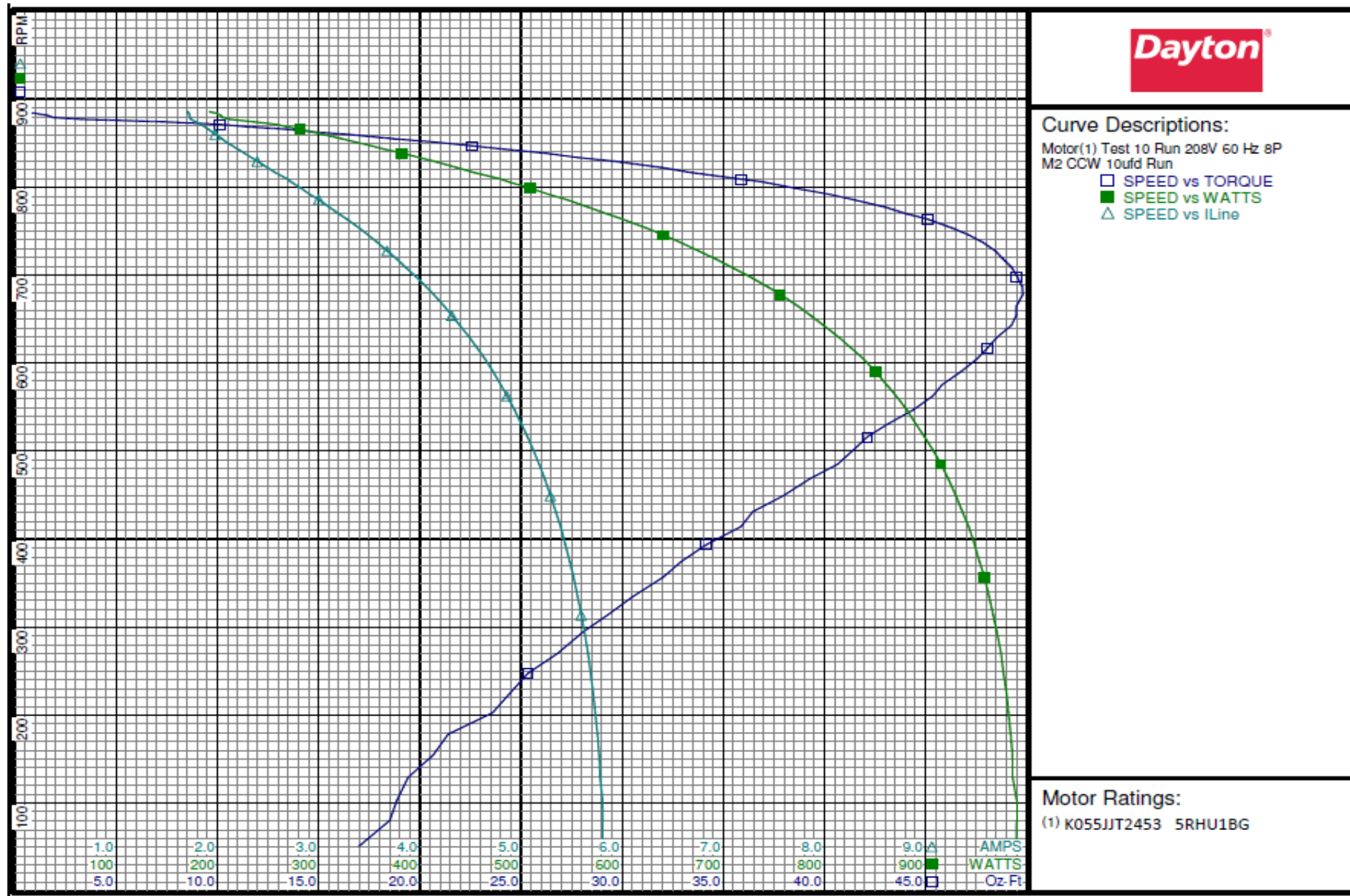
Performance Data



5RHU1BG

REV.

-



DRAWING NO. PAGE 8 of 32 REV.
 5RHU1BG -

Dayton Electric Mfg. Co. Lake Forest, IL 60045 USA

Performance Data



5RHU1BG

REV.

-

Dayton Manufacturing Company

Motor Description

Model: K055JJT2453 5RHU1BG
 Motor ID:
 Poles: 8
 Volts: 208-230
 Frequency: 60
 HP: 1/2
 Speed: 825
 Phase: 1
 Protector: 7AM036-A5

Test Conditions

Test Type: Start
 Test Number: 3
 Poles: 8
 Volts: 208
 Hz: 60
 Rotation: CCW
 Special Cond:
 Speed Conn: M3
 TestBoard: CMD InLine Three Phase #2 Fixture #1
 Run Cap: 10
 Start Cap: 0µfd
 Environment: 24.0 Deg C 56 % RH 965 hPa
 Tested: 5/18/2016 8:37:28 AM
 Tested By: Navarro, Susana
 Gear Ratio: 1:1
 Bearing Friction: -1.31 Oz-Ft
 Windage Torque: -3.01 Oz-Ft

Special Points	Vline (V)	Vaux (V)	Vcap (V)	Iline (A)	Imain (A)	Iaux (A)	Watts	RPM	Tq(Oz-ft)	HP	Eff(%)	PF (%)	Cap
PUT OZ-FT	208.0	41.8	227.7	4.623	5.029	0.867	803.3	28	13.33	0.004	0.4	83.5	10.1
	208.0	42.6	228.9	4.616	5.023	0.870	803.2	40	10.17	0.005	0.5	83.7	10.1
	208.0	43.9	227.1	4.611	5.006	0.864	802.3	71	12.18	0.010	1.0	83.6	10.1
	208.0	46.5	226.0	4.596	4.975	0.859	801.3	122	12.99	0.019	1.8	83.8	10.1
	208.0	49.3	224.5	4.571	4.932	0.854	799.1	172	15.55	0.032	3.0	84.0	10.1
	208.0	52.8	223.4	4.531	4.872	0.850	794.8	220	17.07	0.045	4.2	84.3	10.1
	208.0	56.0	222.7	4.491	4.814	0.847	790.5	263	18.91	0.059	5.6	84.6	10.1
	208.0	59.7	221.9	4.436	4.737	0.844	784.7	310	21.78	0.080	7.6	85.0	10.1
	208.0	63.5	221.4	4.371	4.653	0.842	776.9	351	23.59	0.099	9.5	85.4	10.1
	208.0	67.4	221.1	4.305	4.566	0.840	768.8	389	25.67	0.119	11.5	85.9	10.1
	208.0	71.7	221.0	4.226	4.465	0.840	758.9	428	27.90	0.142	14.0	86.3	10.1
	208.0	76.9	221.2	4.124	4.336	0.842	746.2	471	31.18	0.175	17.5	87.0	10.1
	208.0	80.5	221.8	4.047	4.248	0.844	735.5	498	31.74	0.188	19.1	87.4	10.1
	208.0	85.6	222.6	3.942	4.120	0.847	720.5	530	33.42	0.211	21.8	87.9	10.1
	208.0	90.2	223.7	3.840	3.998	0.850	705.8	560	34.52	0.230	24.3	88.4	10.1
	208.0	95.7	225.3	3.727	3.851	0.858	689.2	588	36.66	0.257	27.8	88.9	10.1
	208.0	100.7	227.1	3.615	3.720	0.864	671.6	613	37.09	0.271	30.1	89.3	10.1
	208.0	106.5	229.7	3.472	3.560	0.874	648.9	641	37.94	0.290	33.3	89.9	10.1
	208.0	112.2	232.5	3.334	3.403	0.884	626.1	665	38.42	0.304	36.2	90.3	10.1
	208.0	117.6	235.5	3.199	3.252	0.896	603.2	686	38.62	0.315	39.0	90.6	10.1
	208.0	123.6	239.1	3.058	3.085	0.909	578.6	707	38.43	0.323	41.7	91.0	10.1
	208.0	129.2	242.9	2.910	2.925	0.924	552.1	726	37.82	0.327	44.2	91.2	10.1
	208.0	134.6	247.2	2.757	2.775	0.940	524.0	745	36.90	0.327	46.6	91.4	10.1
	208.0	140.5	251.9	2.597	2.608	0.958	493.9	762	35.55	0.323	48.7	91.4	10.1
	208.0	146.0	256.5	2.450	2.460	0.976	465.3	777	33.92	0.314	50.3	91.3	10.1
	208.0	151.3	261.3	2.299	2.320	0.995	435.5	791	31.83	0.300	51.4	91.1	10.1
	208.0	156.1	266.0	2.158	2.199	1.012	407.2	804	29.45	0.282	51.7	90.7	10.1
	208.0	161.2	271.5	2.001	2.082	1.034	374.0	817	26.73	0.260	51.9	89.8	10.1
	208.0	165.5	276.3	1.873	1.991	1.051	346.5	828	23.60	0.233	50.1	88.9	10.1
	208.0	169.5	280.5	1.761	1.919	1.068	321.4	838	21.14	0.211	48.9	87.7	10.1
	208.0	173.5	285.1	1.645	1.858	1.085	294.8	847	18.02	0.182	46.0	86.2	10.1
	208.0	176.9	289.2	1.548	1.823	1.101	270.8	854	15.17	0.154	42.5	84.1	10.1
	208.0	181.2	294.5	1.428	1.794	1.121	239.5	864	11.11	0.114	35.6	80.6	10.1
	208.0	182.8	296.6	1.386	1.792	1.129	227.4	868	9.40	0.097	31.9	78.9	10.1
	208.0	185.3	299.9	1.323	1.790	1.142	209.1	874	6.72	0.070	24.9	76.0	10.1
	208.0	187.3	302.5	1.276	1.799	1.152	193.6	878	4.41	0.046	17.8	72.9	10.1
	208.0	189.1	304.8	1.240	1.810	1.161	180.8	883	2.50	0.026	10.8	70.1	10.1
	208.0	190.3	306.7	1.211	1.823	1.168	169.4	887	0.80	0.008	3.7	67.3	10.1
	208.0	191.0	307.7	1.199	1.831	1.172	164.1	888	0.00	0.000	0.0	65.8	10.1

DRAWING NO. PAGE 9 of 32 REV.
 5RHU1BG -

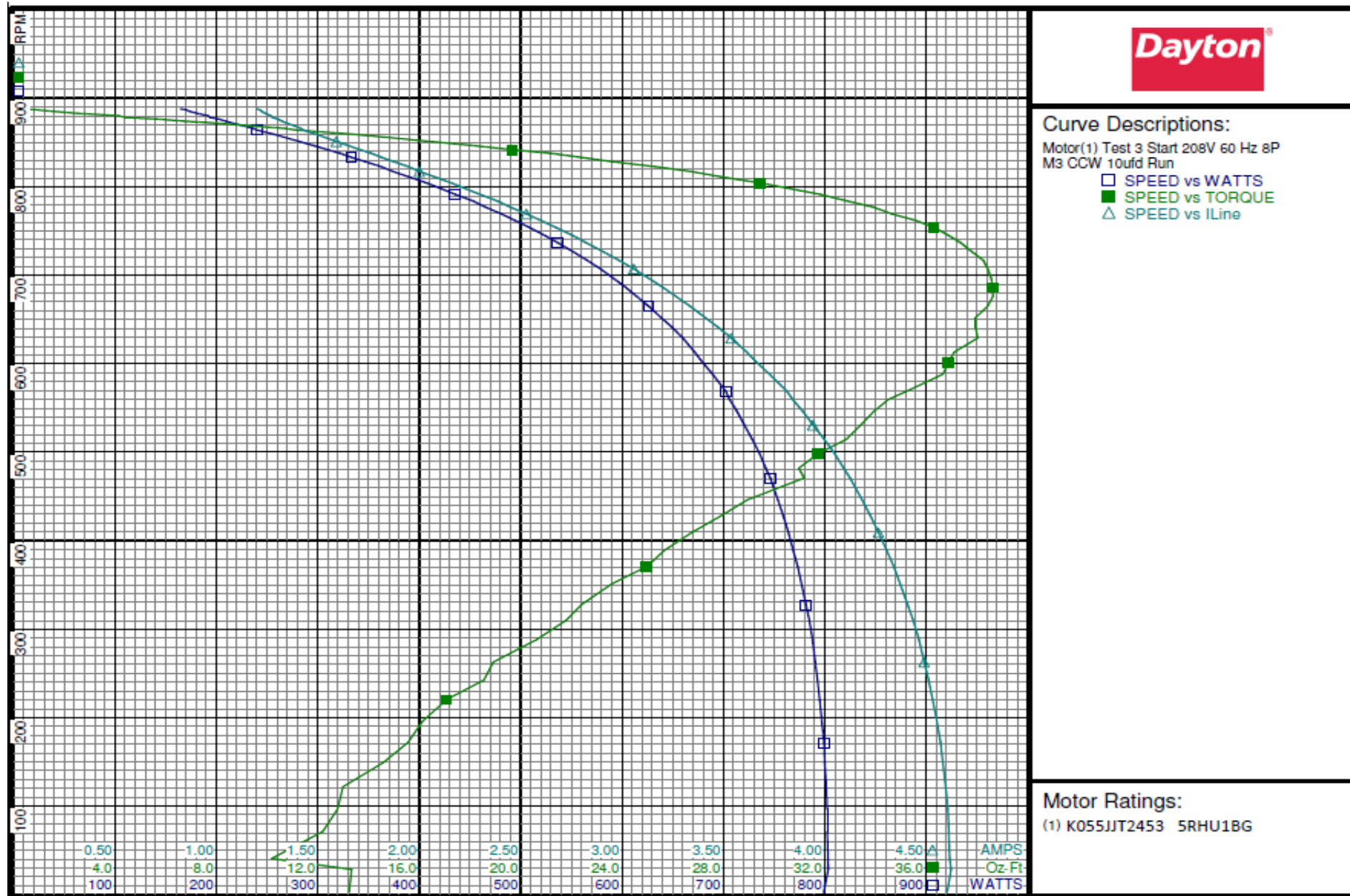
Performance Data



5RHU1BG

REV.

-



DRAWING NO.	PAGE 10 of 32	REV.
5RHU1BG		-

Dayton Electric Mfg. Co. Lake Forest, IL 60045 USA

Performance Data



5RHU1BG

REV.

-

Dayton Manufacturing Company

Motor Description

Model: K055JIT2453 5RHU1BG
 Motor ID:
 Poles: 8
 Volts: 208-230
 Frequency: 60
 HP: 1/2
 Speed: 825
 Phase: 1
 Protector: 7AM036-A5

Test Conditions

Test Type: Run
 Test Number: 11
 Poles: 8
 Volts: 208
 Hz: 60
 Rotation: CCW
 Special Cond:
 Speed Conn: M3
 TestBoard: CMD InLine Three Phase #2 Fixture #1
 Run Cap: 10
 Start Cap: 0µfd
 Environment: 24.0 Deg C 56 % RH 965 hPa
 Tested: 5/18/2016 8:46:27 AM
 Tested By: Navarro, Susana
 Gear Ratio: 1:1
 Bearing Friction: -1.12 Oz-Ft
 Windage Torque: -2.80 Oz-Ft

Special Points	Vline (V)	Vaux (V)	Vcap (V)	Iline (A)	Imain (A)	Iaux (A)	Watts	RPM	Tq(Oz-ft)	HP	Eff (%)	PF (%)	Cap
	208.0	191.6	308.1	1.197	1.831	1.173	163.2	882	0.00	0.000	0.0	65.6	10.1
	208.0	191.4	307.3	1.202	1.821	1.171	167.0	879	0.86	0.009	4.0	66.8	10.1
	208.0	188.5	303.1	1.265	1.794	1.155	191.1	874	4.84	0.050	19.7	72.6	10.1
	208.0	184.4	298.0	1.360	1.781	1.135	221.4	868	8.95	0.092	31.2	78.2	10.1
	208.0	181.7	294.4	1.432	1.789	1.121	241.2	862	11.92	0.122	37.8	81.0	10.1
	208.0	178.6	290.5	1.517	1.807	1.107	263.8	855	15.16	0.154	43.6	83.6	10.1
	208.0	175.1	286.2	1.618	1.837	1.090	289.2	847	18.24	0.184	47.4	85.9	10.1
	208.0	171.6	282.0	1.722	1.887	1.074	313.5	838	21.12	0.211	50.1	87.5	10.1
	208.0	167.4	277.3	1.843	1.957	1.056	340.9	828	24.34	0.240	52.5	88.9	10.1
25.49 OZ-FT	208.0	165.7	275.4	1.892	1.987	1.049	351.7	824	25.49	0.250	53.0	89.3	10.1
0.25 HP	208.0	165.7	275.4	1.892	1.987	1.049	351.7	824	25.49	0.250	53.0	89.3	10.1
	208.0	163.1	272.6	1.970	2.042	1.038	368.6	817	27.11	0.264	53.4	89.9	10.1
	208.0	158.8	268.2	2.093	2.136	1.022	394.4	806	29.74	0.285	54.0	90.6	10.1
	208.0	153.2	262.5	2.260	2.272	1.000	429.0	792	32.55	0.307	53.4	91.3	10.1
	208.0	147.8	257.8	2.403	2.408	0.982	457.6	778	34.88	0.323	52.7	91.6	10.1
	208.0	142.8	253.5	2.542	2.544	0.966	484.4	764	36.57	0.333	51.2	91.6	10.1
38.03 OZ-FT	208.0	137.8	249.2	2.683	2.683	0.950	511.4	749	38.03	0.339	49.5	91.6	10.1
	208.0	137.1	248.7	2.702	2.702	0.948	515.0	747	38.22	0.340	49.3	91.6	10.1
	208.0	131.0	244.1	2.864	2.872	0.930	545.2	728	39.40	0.341	46.7	91.5	10.1
	208.0	125.8	240.4	2.998	3.016	0.916	569.5	710	40.22	0.340	44.6	91.3	10.1
BDT OZ-FT	208.0	119.6	236.4	3.160	3.193	0.901	598.3	689	40.71	0.334	41.6	91.0	10.1
	208.0	119.6	236.4	3.160	3.193	0.901	598.3	689	40.71	0.334	41.6	91.0	10.1
	208.0	113.6	232.9	3.310	3.361	0.888	624.0	665	40.60	0.322	38.4	90.6	10.1
	208.0	108.1	230.3	3.438	3.509	0.878	645.2	643	40.18	0.307	35.6	90.2	10.1
	208.0	102.6	227.9	3.568	3.660	0.868	666.2	618	39.41	0.290	32.5	89.8	10.1
	208.0	97.3	225.8	3.689	3.804	0.861	685.2	591	38.40	0.270	29.4	89.3	10.1
	208.0	92.2	224.3	3.799	3.935	0.855	701.7	564	37.41	0.251	26.7	88.8	10.1
	208.0	86.9	223.0	3.910	4.071	0.850	718.2	533	35.89	0.228	23.6	88.3	10.1
	208.0	82.2	222.2	4.007	4.190	0.846	731.8	501	34.35	0.205	20.9	87.8	10.1
	208.0	77.5	221.6	4.098	4.303	0.844	744.4	468	32.55	0.181	18.2	87.3	10.1
	208.0	72.9	221.4	4.181	4.409	0.844	755.5	432	30.90	0.159	15.7	86.9	10.1
	208.0	68.8	221.5	4.254	4.503	0.844	764.9	395	28.75	0.135	13.2	86.4	10.1
	208.0	65.1	221.7	4.316	4.584	0.845	772.8	359	27.43	0.117	11.3	86.1	10.1
	208.0	61.2	222.2	4.378	4.667	0.846	780.5	318	25.57	0.097	9.2	85.7	10.1
	208.0	57.4	222.8	4.430	4.740	0.849	786.3	272	23.07	0.075	7.1	85.3	10.1
	208.0	54.1	223.7	4.473	4.800	0.852	791.5	229	21.06	0.057	5.4	85.1	10.1
	208.0	50.7	224.6	4.507	4.853	0.855	794.8	179	19.22	0.041	3.8	84.8	10.1
	208.0	47.7	225.9	4.536	4.899	0.860	798.6	129	17.45	0.027	2.5	84.6	10.1
	208.0	45.1	227.1	4.545	4.925	0.865	798.7	81	16.38	0.016	1.5	84.5	10.1

DRAWING NO. PAGE 11 of 32 REV.
5RHU1BG -

Dayton Electric Mfg. Co. Lake Forest, IL 60045 USA

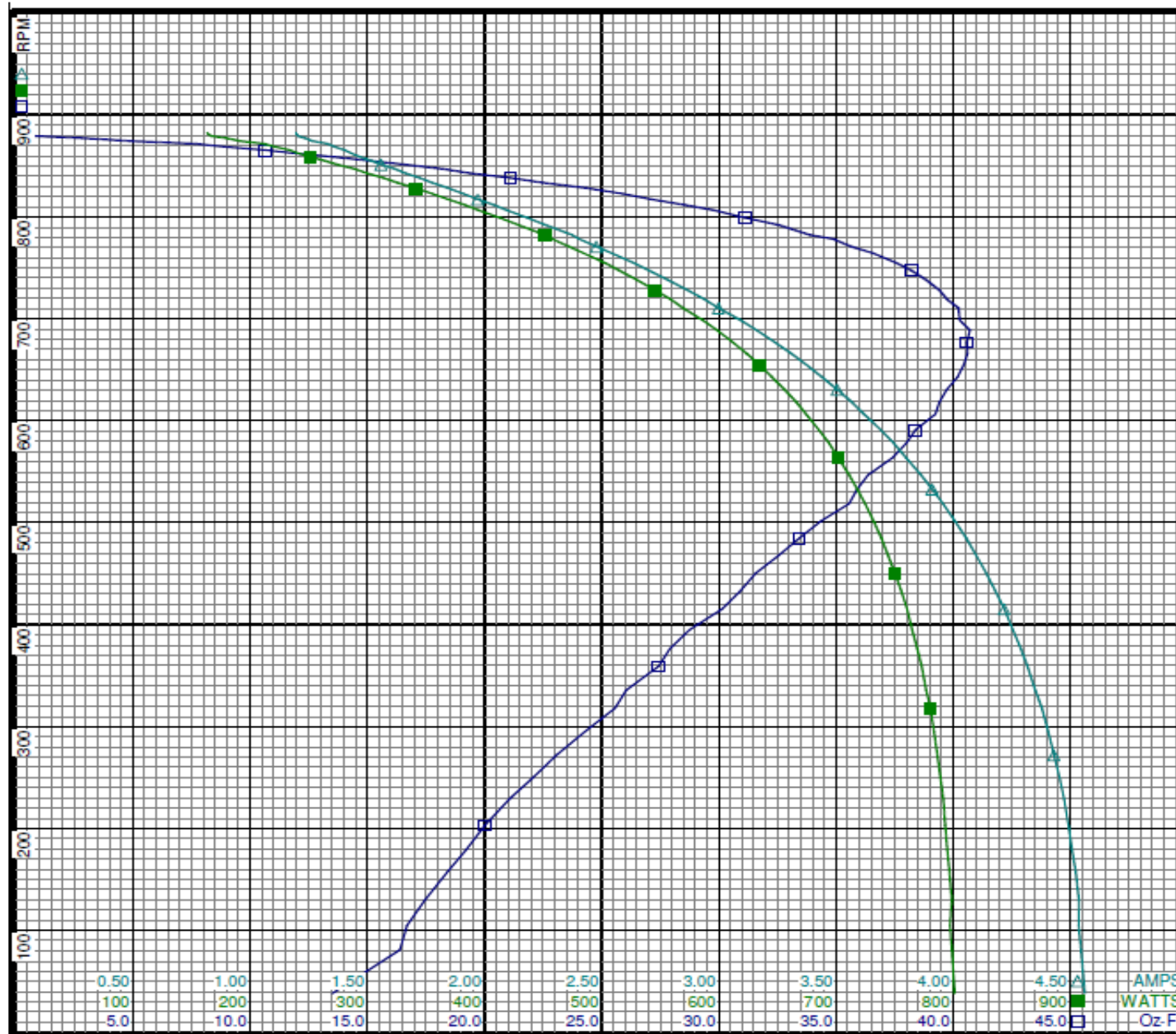
Performance Data



5RHU1BG

REV.

-



Curve Descriptions:

Motor(1) Test 11 Run 208V 60 Hz 8P
M3 CCW 10ufd Run

- SPEED vs TORQUE
- SPEED vs WATTS
- △ SPEED vs ILine

Motor Ratings:

(1) K055JIT2453 5RHU1BG

DRAWING NO.	PAGE 12 of 32	REV.
5RHU1BG		-

Dayton Electric Mfg. Co. Lake Forest, IL 60045 USA

Performance Data



5RHU1BG

REV.

-

Dayton Manufacturing Company

Motor Description

Model: K055JJT2453 5RHU1BG
 Motor ID:
 Poles: 8
 Volts: 208-230
 Frequency: 60
 HP: 1/2
 Speed: 825
 Phase: 1
 Protector: 7AM036-A5

Test Conditions

Test Type: Start
 Test Number: 4
 Poles: 8
 Volts: 208
 Hz: 60
 Rotation: CCW
 Special Cond:
 Speed Conn: M4
 TestBoard: CMD InLine Three Phase #2 Fixture #1
 Run Cap: 10
 Start Cap: 0µfd
 Environment: 24.0 Deg C 56 % RH 965 hPa
 Tested: 5/18/2016 8:50:51 AM
 Tested By: Navarro, Susana
 Gear Ratio: 1:1
 Bearing Friction: -1.17 Oz-Ft
 Windage Torque: -2.89 Oz-Ft

Special Points PUT OZ-FT	Vline (V)	Vaux (V)	Vcap (V)	Iline (A)	Imain (A)	Iaux (A)	Watts	RPM	Tq(Oz-ft)	HP	Eff(%)	PF(%)	Cap
208.0	42.0	229.4	3.663	4.049	0.873	659.2	14	8.78	0.001	0.2	86.5	10.1	
208.0	44.5	227.7	3.669	4.036	0.866	660.8	70	10.88	0.009	1.0	86.6	10.1	
208.0	47.0	226.0	3.658	4.009	0.860	659.9	123	12.01	0.018	2.0	86.7	10.1	
208.0	49.7	225.0	3.634	3.967	0.856	657.1	173	13.93	0.029	3.3	86.9	10.1	
208.0	52.6	224.0	3.603	3.919	0.853	653.6	220	15.43	0.040	4.6	87.2	10.1	
208.0	55.9	223.2	3.565	3.862	0.850	649.4	267	17.43	0.055	6.4	87.6	10.1	
208.0	59.0	222.6	3.525	3.804	0.847	644.6	308	18.32	0.067	7.8	87.9	10.1	
208.0	62.6	222.2	3.474	3.733	0.845	638.4	352	20.73	0.087	10.1	88.3	10.1	
208.0	66.3	221.9	3.417	3.655	0.845	631.0	391	22.42	0.104	12.3	88.8	10.1	
208.0	69.7	221.9	3.363	3.583	0.844	623.6	425	23.39	0.118	14.2	89.2	10.1	
208.0	74.2	222.1	3.288	3.485	0.845	613.6	464	25.57	0.141	17.2	89.7	10.1	
208.0	78.3	222.6	3.216	3.392	0.847	603.2	497	26.89	0.159	19.7	90.2	10.1	
208.0	82.7	223.3	3.136	3.290	0.850	591.6	529	28.50	0.179	22.6	90.7	10.1	
208.0	87.6	224.5	3.045	3.175	0.854	577.7	560	29.48	0.197	25.4	91.2	10.1	
208.0	92.1	225.9	2.957	3.066	0.859	564.2	589	30.45	0.213	28.2	91.7	10.1	
208.0	98.1	227.9	2.837	2.919	0.868	545.2	621	32.29	0.239	32.7	92.4	10.1	
208.0	102.2	229.7	2.752	2.818	0.874	530.6	641	32.04	0.244	34.4	92.7	10.1	
208.0	106.8	232.0	2.653	2.702	0.883	513.8	663	32.28	0.255	37.0	93.1	10.1	
208.0	112.3	235.1	2.533	2.564	0.894	492.8	687	32.19	0.263	39.8	93.5	10.1	
208.0	117.7	238.2	2.415	2.429	0.906	472.1	708	32.17	0.271	42.9	94.0	10.1	
208.0	122.3	241.4	2.308	2.312	0.918	452.2	726	31.40	0.271	44.8	94.2	10.1	
208.0	128.0	245.5	2.173	2.169	0.934	427.1	746	30.52	0.271	47.3	94.5	10.1	
208.0	132.8	249.3	2.056	2.050	0.949	404.9	761	29.30	0.266	48.9	94.7	10.1	
208.0	137.5	253.4	1.939	1.938	0.964	382.2	777	27.95	0.258	50.4	94.7	10.1	
208.0	142.6	258.0	1.809	1.821	0.982	356.3	792	26.00	0.245	51.3	94.7	10.1	
208.0	146.8	262.2	1.692	1.726	0.998	332.9	805	24.11	0.231	51.8	94.6	10.1	
208.0	151.4	266.4	1.583	1.635	1.014	310.6	817	21.92	0.213	51.2	94.3	10.1	
208.0	155.5	271.0	1.465	1.564	1.032	285.5	828	19.44	0.192	50.1	93.7	10.1	
208.0	158.8	274.9	1.368	1.511	1.047	264.9	838	16.94	0.169	47.6	93.1	10.1	
208.0	163.7	280.1	1.242	1.454	1.067	237.4	849	13.84	0.140	44.0	91.9	10.1	
208.0	165.6	282.5	1.189	1.444	1.076	224.4	855	12.09	0.123	40.9	90.8	10.1	
208.0	168.1	285.8	1.120	1.432	1.088	208.4	861	9.65	0.099	35.4	89.5	10.1	
208.0	170.8	289.1	1.047	1.426	1.101	190.5	868	7.12	0.074	28.8	87.4	10.1	
208.0	172.9	291.7	0.995	1.428	1.111	177.1	874	5.18	0.054	22.7	85.6	10.1	
208.0	175.1	294.4	0.944	1.435	1.121	163.5	879	3.42	0.036	16.3	83.3	10.1	
208.0	176.5	296.5	0.907	1.449	1.129	152.7	883	1.60	0.017	8.2	80.9	10.1	
208.0	178.1	298.5	0.874	1.462	1.137	142.7	887	0.05	0.001	0.3	78.5	10.1	

DRAWING NO. PAGE 13 of 32 REV.
 5RHU1BG -

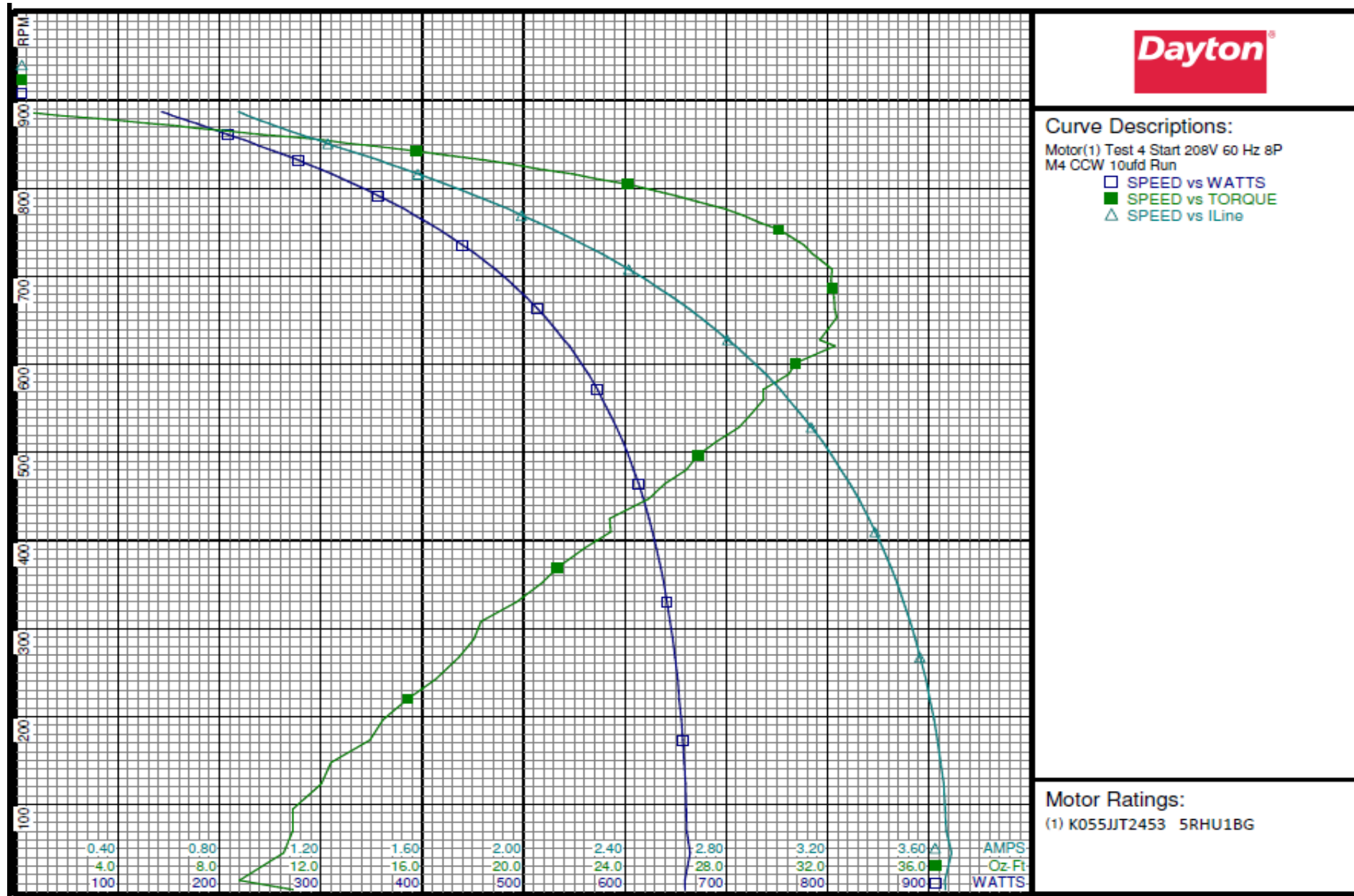
Performance Data



5RHU1BG

REV.

-



DRAWING NO.	PAGE 14 of 32	REV.
5RHU1BG		-

Dayton Electric Mfg. Co. Lake Forest, IL 60045 USA

Performance Data



5RHU1BG

REV.

-

Dayton Manufacturing Company

Motor Description

Model: K055JIT2453 5RHU1BG
 Motor ID:
 Poles: 8
 Volts: 208-230
 Frequency: 60
 HP: 1/2
 Speed: 825
 Phase: 1
 Protector: 7AM036-A5

Test Conditions

Test Type: Run
 Test Number: 12
 Poles: 8
 Volts: 208
 Hz: 60
 Rotation: CCW
 Special Cond:
 Speed Conn: M4
 TestBoard: CMD InLine Three Phase #2 Fixture #1
 Run Cap: 10
 Start Cap: 0µfd
 Environment: 24.0 Deg C 56 % RH 965 hPa
 Tested: 5/18/2016 8:57:35 AM
 Tested By: Navarro, Susana
 Gear Ratio: 1:1
 Bearing Friction: -1.13 Oz-Ft
 Windage Torque: -2.77 Oz-Ft

Special Points	Vline (V)	Vaux (V)	Vcap (V)	Iline (A)	Imain (A)	Iaux (A)	Watts	RPM	Tq(Oz-ft)	HP	Eff (%)	PF (%)	Cap
	208.0	178.0	298.5	0.871	1.467	1.137	140.8	881	0.00	0.000	0.0	77.7	10.1
	208.0	177.8	297.9	0.879	1.463	1.135	143.4	877	0.71	0.007	3.8	78.4	10.1
	208.0	173.0	291.7	0.991	1.428	1.111	175.5	871	5.44	0.056	24.0	85.2	10.1
	208.0	170.1	287.8	1.069	1.426	1.096	195.4	865	8.46	0.087	33.3	87.9	10.1
	208.0	167.7	284.8	1.132	1.432	1.085	210.9	859	10.74	0.110	38.9	89.6	10.1
	208.0	164.4	280.8	1.224	1.451	1.070	232.4	850	13.62	0.138	44.3	91.3	10.1
	208.0	162.1	278.0	1.289	1.474	1.059	247.2	845	15.21	0.153	46.2	92.2	10.1
	208.0	158.1	273.3	1.400	1.525	1.041	271.4	833	18.74	0.186	51.1	93.2	10.1
20.49 OZ-FT	208.0	155.2	270.3	1.478	1.569	1.030	288.1	826	20.49	0.201	52.2	93.7	10.1
0.2 HP	208.0	155.5	270.6	1.470	1.564	1.031	286.3	827	20.32	0.200	52.1	93.6	10.1
	208.0	154.0	268.9	1.513	1.591	1.024	295.6	822	21.22	0.208	52.4	93.9	10.1
	208.0	149.7	264.4	1.629	1.670	1.007	319.7	811	23.74	0.229	53.5	94.4	10.1
	208.0	145.5	260.3	1.740	1.756	0.992	342.5	799	25.76	0.245	53.4	94.6	10.1
	208.0	140.7	255.8	1.868	1.867	0.975	367.8	785	28.05	0.262	53.1	94.7	10.1
31.14 OZ-FT	208.0	136.2	251.5	1.987	1.971	0.959	391.4	770	30.15	0.276	52.7	94.7	10.1
	208.0	129.1	246.1	2.153	2.148	0.937	423.3	750	31.21	0.279	49.1	94.5	10.1
	208.0	125.6	243.4	2.236	2.235	0.928	439.1	737	32.56	0.286	48.6	94.4	10.1
	208.0	120.3	239.7	2.361	2.369	0.914	462.2	719	33.30	0.285	46.0	94.1	10.1
	208.0	115.0	236.4	2.484	2.503	0.901	483.9	698	33.61	0.279	43.0	93.7	10.1
BDT OZ-FT	208.0	110.4	233.3	2.598	2.621	0.890	504.6	677	34.27	0.276	40.9	93.4	10.1
	208.0	110.4	233.3	2.598	2.621	0.890	504.6	677	34.27	0.276	40.9	93.4	10.1
	208.0	104.6	230.6	2.713	2.768	0.879	524.5	655	34.02	0.265	37.7	92.9	10.1
	208.0	99.5	228.3	2.818	2.894	0.870	541.8	630	33.40	0.250	34.5	92.4	10.1
	208.0	94.7	226.4	2.917	3.013	0.863	558.0	605	32.91	0.237	31.7	92.0	10.1
	208.0	89.8	224.8	3.017	3.131	0.857	573.7	575	31.79	0.218	28.3	91.4	10.1
	208.0	85.0	223.6	3.106	3.246	0.852	587.2	546	30.53	0.198	25.2	90.9	10.1
	208.0	81.0	222.7	3.177	3.338	0.849	598.2	519	30.59	0.189	23.6	90.5	10.1
	208.0	76.3	222.1	3.260	3.445	0.847	610.0	486	28.79	0.166	20.3	90.0	10.1
	208.0	72.2	221.8	3.331	3.537	0.845	619.7	450	26.90	0.144	17.3	89.5	10.1
	208.0	68.3	221.7	3.393	3.620	0.845	628.3	415	25.99	0.128	15.2	89.0	10.1
	208.0	64.4	221.9	3.450	3.698	0.846	635.6	376	24.05	0.107	12.6	88.6	10.1
	208.0	61.0	222.3	3.500	3.767	0.847	641.9	336	22.37	0.089	10.4	88.2	10.1
	208.0	57.8	222.8	3.544	3.829	0.849	647.4	295	21.08	0.074	8.5	87.8	10.1
	208.0	54.5	223.6	3.582	3.886	0.852	651.9	250	19.26	0.057	6.6	87.5	10.1
	208.0	51.3	224.5	3.614	3.936	0.855	655.5	202	17.50	0.042	4.8	87.2	10.1
	208.0	48.9	225.1	3.634	3.970	0.858	657.8	159	16.78	0.032	3.6	87.0	10.1
	208.0	45.4	226.9	3.655	4.013	0.864	660.0	91	13.05	0.014	1.6	86.8	10.1
	208.0	43.6	228.4	3.656	4.026	0.870	660.2	51	13.44	0.008	0.9	86.8	10.1

DRAWING NO. PAGE 15 of 32 REV.
5RHU1BG -

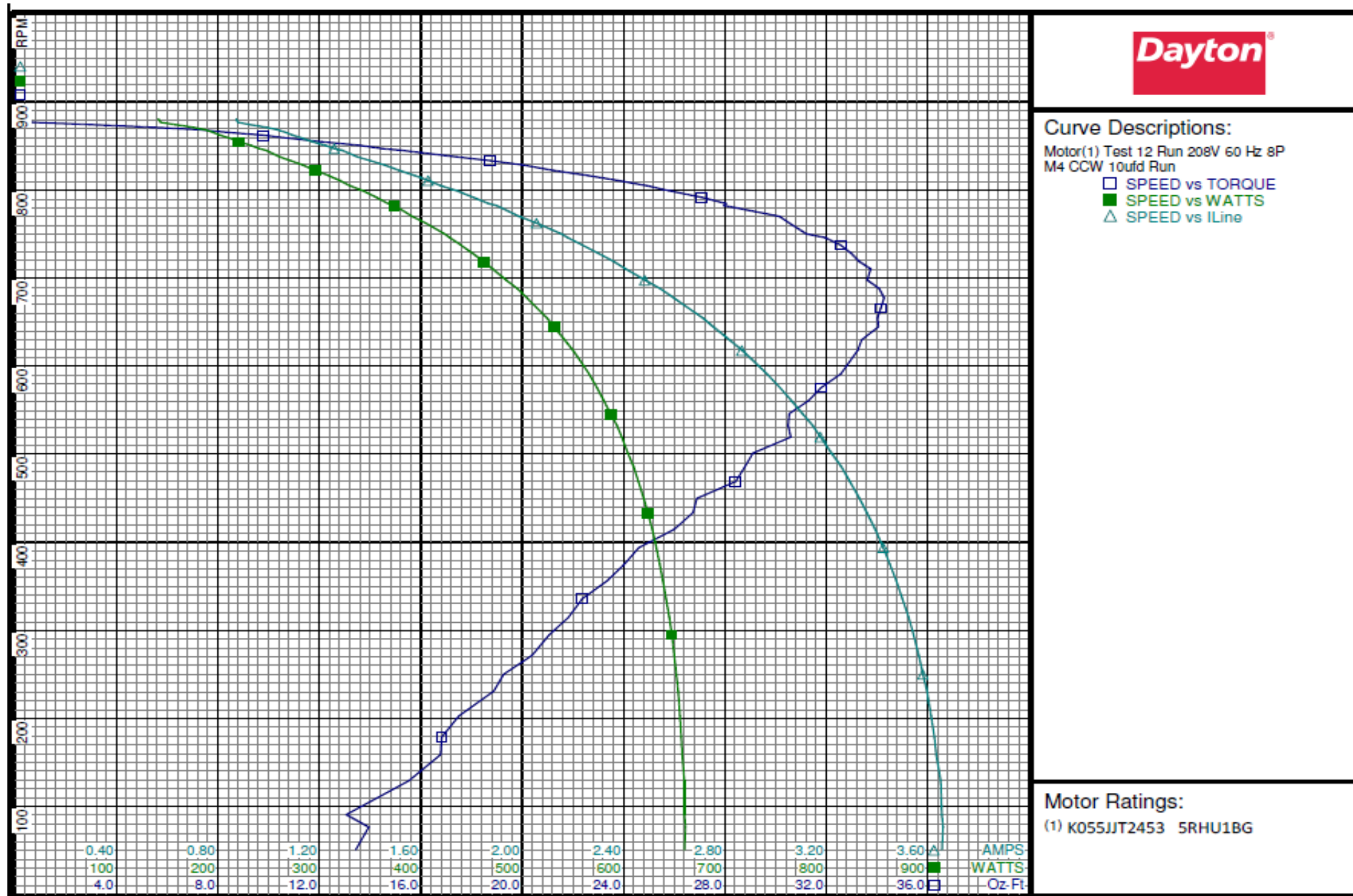
Performance Data



5RHU1BG

REV.

-



DRAWING NO. PAGE 16 of 32 REV.
 5RHU1BG -

Dayton Electric Mfg. Co. Lake Forest, IL 60045 USA

Performance Data



5RHU1BG

REV.

-

Dayton Manufacturing Company

Motor Description

Model: K055JJT2453 5RHU1BG
 Motor ID:
 Poles: 8
 Volts: 208-230
 Frequency: 60
 HP: 1/2
 Speed: 825
 Phase: 1
 Protector: 7AM036-A5

Test Conditions

Test Type: Start
 Test Number: 5
 Poles: 8
 Volts: 230
 Hz: 60
 Rotation: CCW
 Special Cond:
 Speed Conn: M1
 TestBoard: CMD InLine Three Phase #2 Fixture #1
 Run Cap: 10
 Start Cap: 0µfd
 Environment: 24.2 Deg C 64 % RH 965 hPa
 Tested: 5/18/2016 7:37:49 AM
 Tested By: Bribiesca, Griselda
 Gear Ratio: 1:1
 Bearing Friction: -1.28 Oz-Ft
 Windage Torque: -2.95 Oz-Ft

Special Points	Vline (V)	Vaux (V)	Vcap (V)	Iline (A)	Imain (A)	Iaux (A)	Watts	RPM	Tq(Oz-ft)	HP	Eff (%)	PF (%)	Cap
	230.0	46.1	252.0	8.778	9.286	0.978	1565.1	13	20.53	0.003	0.2	77.5	10.3
PUT OZ-FT	230.0	47.8	252.6	8.730	9.235	0.981	1555.5	42	19.86	0.010	0.5	77.5	10.3
	230.0	51.3	249.7	8.722	9.203	0.967	1557.2	93	23.22	0.026	1.2	77.6	10.3
	230.0	57.5	246.9	8.645	9.086	0.956	1550.4	168	27.48	0.055	2.6	78.0	10.3
	230.0	65.0	244.9	8.535	8.938	0.955	1540.2	240	33.28	0.095	4.6	78.5	10.3
	230.0	72.6	243.7	8.382	8.748	0.946	1523.4	308	40.56	0.148	7.3	79.0	10.3
	230.0	80.9	242.9	8.196	8.527	0.948	1500.8	368	47.02	0.206	10.3	79.6	10.4
	230.0	89.6	242.9	7.989	8.273	0.945	1474.9	424	52.75	0.266	13.5	80.3	10.3
	230.0	99.3	243.9	7.738	7.980	0.948	1440.9	478	58.76	0.335	17.3	81.0	10.3
	230.0	109.9	245.9	7.448	7.644	0.953	1401.1	530	64.74	0.408	21.7	81.8	10.3
	230.0	119.5	249.0	7.178	7.334	0.967	1359.7	570	68.18	0.463	25.4	82.4	10.3
	230.0	131.8	254.0	6.799	6.914	0.987	1298.9	615	72.48	0.531	30.5	83.1	10.3
	230.0	143.5	260.1	6.436	6.510	1.003	1237.3	653	74.47	0.579	34.9	83.6	10.2
	230.0	152.5	265.7	6.124	6.170	1.032	1183.0	680	76.11	0.616	38.9	84.0	10.3
	230.0	166.7	275.7	5.649	5.661	1.068	1091.4	717	74.63	0.637	43.6	84.0	10.3
	230.0	178.1	285.1	5.244	5.252	1.101	1009.8	745	71.95	0.638	47.1	83.7	10.2
	230.0	189.2	295.2	4.845	4.860	1.140	923.4	769	67.60	0.619	50.0	82.9	10.2
	230.0	198.3	304.1	4.504	4.531	1.178	847.0	788	63.22	0.593	52.2	81.8	10.3
	230.0	208.9	316.1	4.102	4.200	1.218	746.3	811	54.59	0.527	52.7	79.1	10.2
	230.0	217.4	325.8	3.800	3.968	1.249	664.1	828	46.68	0.460	51.7	76.0	10.2
	230.0	225.0	335.2	3.543	3.808	1.289	584.6	842	38.00	0.381	48.6	71.7	10.2
	230.0	231.2	343.3	3.362	3.728	1.316	515.6	855	29.48	0.300	43.4	66.7	10.2
	230.0	236.5	350.6	3.230	3.701	1.351	454.3	865	21.61	0.223	36.5	61.2	10.2
	230.0	240.3	356.3	3.161	3.724	1.369	404.4	874	14.48	0.151	27.8	55.6	10.2
	230.0	243.6	361.2	3.117	3.769	1.390	360.9	881	7.98	0.084	17.3	50.3	10.2
	230.0	245.6	364.6	3.102	3.812	1.400	331.6	887	3.03	0.032	7.2	46.5	10.2
	230.0	247.1	366.9	3.095	3.846	1.408	310.6	890	0.00	0.000	0.0	43.6	10.2

DRAWING NO. PAGE 17 of 32 REV.
5RHU1BG -

Dayton Electric Mfg. Co. Lake Forest, IL 60045 USA

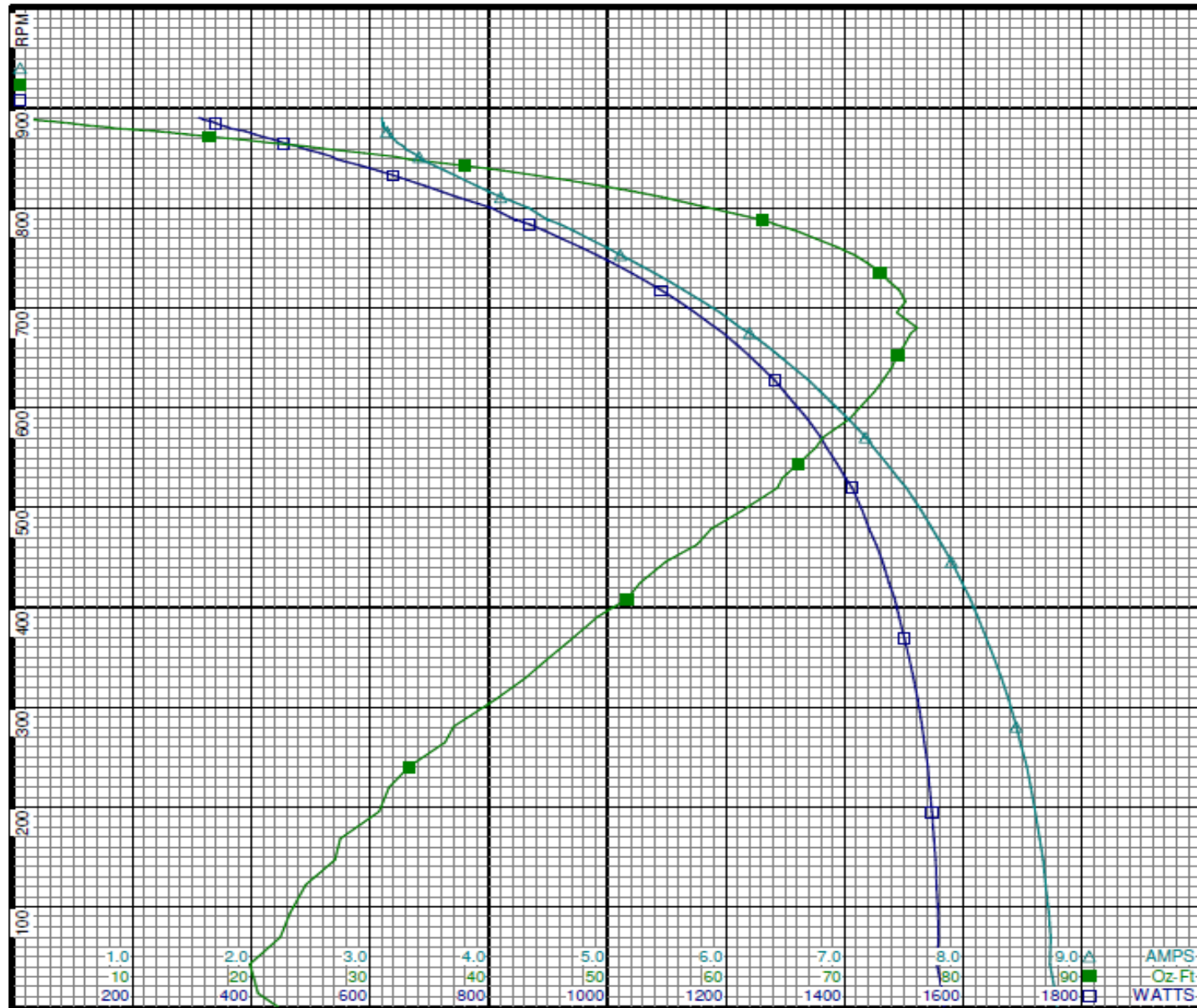
Performance Data



5RHU1BG

REV.

-



Curve Descriptions:

Motor(1) Test 5 Start 230V 60 Hz 8P
M1 CCW 10ufd Run
□ SPEED vs WATTS
■ SPEED vs TORQUE
△ SPEED vs ILine

Motor Ratings:

(1) K055JIT2453 5RHU1BG

DRAWING NO.	PAGE 18 of 32	REV.
5RHU1BG		-

Dayton Electric Mfg. Co. Lake Forest, IL 60045 USA

©2019 W.W. Grainger, Inc. This design may not be reproduced, modified or redistributed without written permission from W.W. Grainger, Inc.

Performance Data



5RHU1BG

REV.

-

Dayton Manufacturing Company

Motor Description

Model: K055JJT2453 5RHU1BG
 Motor ID:
 Poles: 8
 Volts: 208-230
 Frequency: 60
 HP: 1/2
 Speed: 825
 Phase: 1
 Protector: 7AM036-A5

Test Conditions

Test Type: Run
 Test Number: 13
 Poles: 8
 Volts: 230
 Hz: 60
 Rotation: CCW
 Special Cond:
 Speed Conn: M1
 TestBoard: CMD InLine Three Phase #2 Fixture #1
 Run Cap: 10
 Start Cap: 0µfd
 Environment: 24.2 Deg C 64 % RH 965 hPa
 Tested: 5/18/2016 7:44:44 AM
 Tested By: Bribiesca, Griselda
 Gear Ratio: 1:1
 Bearing Friction: -1.29 Oz-Ft
 Windage Torque: -2.80 Oz-Ft

Special Points	Vline (V)	Vaux (V)	Vcap (V)	Iline (A)	Imain (A)	Iaux (A)	Watts	RPM	Tq(Oz-ft)	HP	Eff (%)	PF (%)	Cap
	230.0	247.0	366.7	3.103	3.863	1.396	306.1	888	0.00	0.000	0.0	42.9	10.1
	230.0	246.4	365.5	3.102	3.841	1.391	317.1	886	1.86	0.020	4.6	44.4	10.1
	230.0	245.5	364.2	3.105	3.821	1.387	330.1	882	3.83	0.040	9.1	46.2	10.1
	230.0	245.3	363.7	3.107	3.813	1.384	332.6	877	4.34	0.045	10.2	46.5	10.1
	230.0	240.4	355.8	3.162	3.727	1.354	404.6	872	15.34	0.159	29.3	55.6	10.1
	230.0	237.5	351.5	3.216	3.712	1.338	441.6	866	20.61	0.212	35.9	59.7	10.1
	230.0	234.6	347.2	3.283	3.712	1.322	478.4	859	25.67	0.263	40.9	63.4	10.1
	230.0	230.9	342.2	3.380	3.736	1.302	521.6	852	31.17	0.316	45.2	67.1	10.1
0.333 HP	230.0	229.6	340.4	3.422	3.756	1.296	536.4	849	32.94	0.333	46.3	68.1	10.1
	230.0	226.6	336.1	3.519	3.793	1.279	573.1	843	37.63	0.377	49.1	70.8	10.1
	230.0	222.0	330.2	3.672	3.880	1.257	623.7	833	43.43	0.431	51.5	73.8	10.1
	230.0	216.8	323.7	3.857	4.003	1.233	678.3	823	49.24	0.482	53.0	76.5	10.1
50.92 OZ-FT	230.0	215.1	321.8	3.918	4.047	1.225	695.4	819	50.92	0.497	53.3	77.1	10.1
	230.0	211.0	317.0	4.068	4.161	1.207	736.3	811	54.71	0.528	53.5	78.7	10.1
	230.0	204.3	309.6	4.314	4.365	1.179	798.8	798	60.19	0.572	53.4	80.5	10.1
	230.0	197.9	303.2	4.539	4.572	1.155	853.0	786	64.49	0.603	52.8	81.7	10.1
	230.0	190.6	296.0	4.811	4.824	1.127	915.3	770	68.61	0.629	51.3	82.7	10.1
	230.0	183.1	288.5	5.108	5.094	1.099	979.7	753	71.96	0.645	49.1	83.4	10.1
	230.0	175.6	282.1	5.374	5.365	1.075	1035.7	736	74.66	0.654	47.1	83.8	10.1
	230.0	167.6	275.6	5.658	5.657	1.050	1092.7	717	76.37	0.652	44.5	84.0	10.1
	230.0	160.5	270.7	5.884	5.911	1.032	1136.7	700	77.25	0.644	42.3	84.0	10.1
	230.0	152.2	264.9	6.169	6.214	1.010	1190.3	678	77.81	0.628	39.3	83.9	10.1
BDT OZ-FT	230.0	148.5	262.6	6.289	6.344	1.001	1212.3	667	77.81	0.618	38.0	83.8	10.1
	230.0	144.2	259.8	6.448	6.495	0.989	1239.8	653	76.63	0.596	35.9	83.6	10.1
	230.0	136.6	255.7	6.689	6.763	0.974	1281.9	629	75.83	0.568	33.0	83.3	10.1
	230.0	128.7	252.2	6.924	7.032	0.961	1320.8	602	73.78	0.529	29.9	82.9	10.1
	230.0	121.4	249.5	7.128	7.275	0.951	1353.2	576	71.80	0.493	27.2	82.5	10.1
	230.0	114.7	247.1	7.322	7.496	0.942	1384.0	549	69.38	0.454	24.5	82.2	10.1
	230.0	107.4	245.2	7.525	7.727	0.934	1414.0	517	65.68	0.405	21.3	81.7	10.1
	230.0	100.7	244.0	7.700	7.931	0.930	1439.1	485	62.26	0.360	18.6	81.3	10.1
	230.0	94.6	243.2	7.852	8.110	0.927	1460.1	452	59.17	0.319	16.3	80.8	10.1
	230.0	88.2	242.8	8.010	8.297	0.924	1480.8	414	54.36	0.268	13.5	80.4	10.1
	230.0	82.4	243.0	8.136	8.449	0.926	1496.6	376	50.45	0.226	11.3	80.0	10.1
	230.0	76.6	243.4	8.257	8.598	0.927	1511.1	333	45.84	0.182	9.0	79.6	10.1
	230.0	71.4	244.0	8.359	8.724	0.929	1523.8	293	42.10	0.147	7.2	79.3	10.1
	230.0	66.1	245.0	8.444	8.835	0.933	1533.3	248	38.15	0.113	5.5	78.9	10.1
	230.0	61.3	246.4	8.509	8.924	0.939	1540.7	203	34.10	0.082	4.0	78.7	10.1
	230.0	57.0	247.6	8.564	9.001	0.942	1546.5	153	30.22	0.055	2.7	78.5	10.1
	230.0	52.9	249.5	8.587	9.048	0.951	1546.8	106	27.54	0.035	1.7	78.3	10.1
	230.0	49.1	251.2	8.628	9.109	0.956	1553.9	51	24.18	0.015	0.7	78.3	10.1

DRAWING NO. PAGE 19 of 32 REV.
5RHU1BG -

Dayton Electric Mfg. Co. Lake Forest, IL 60045 USA

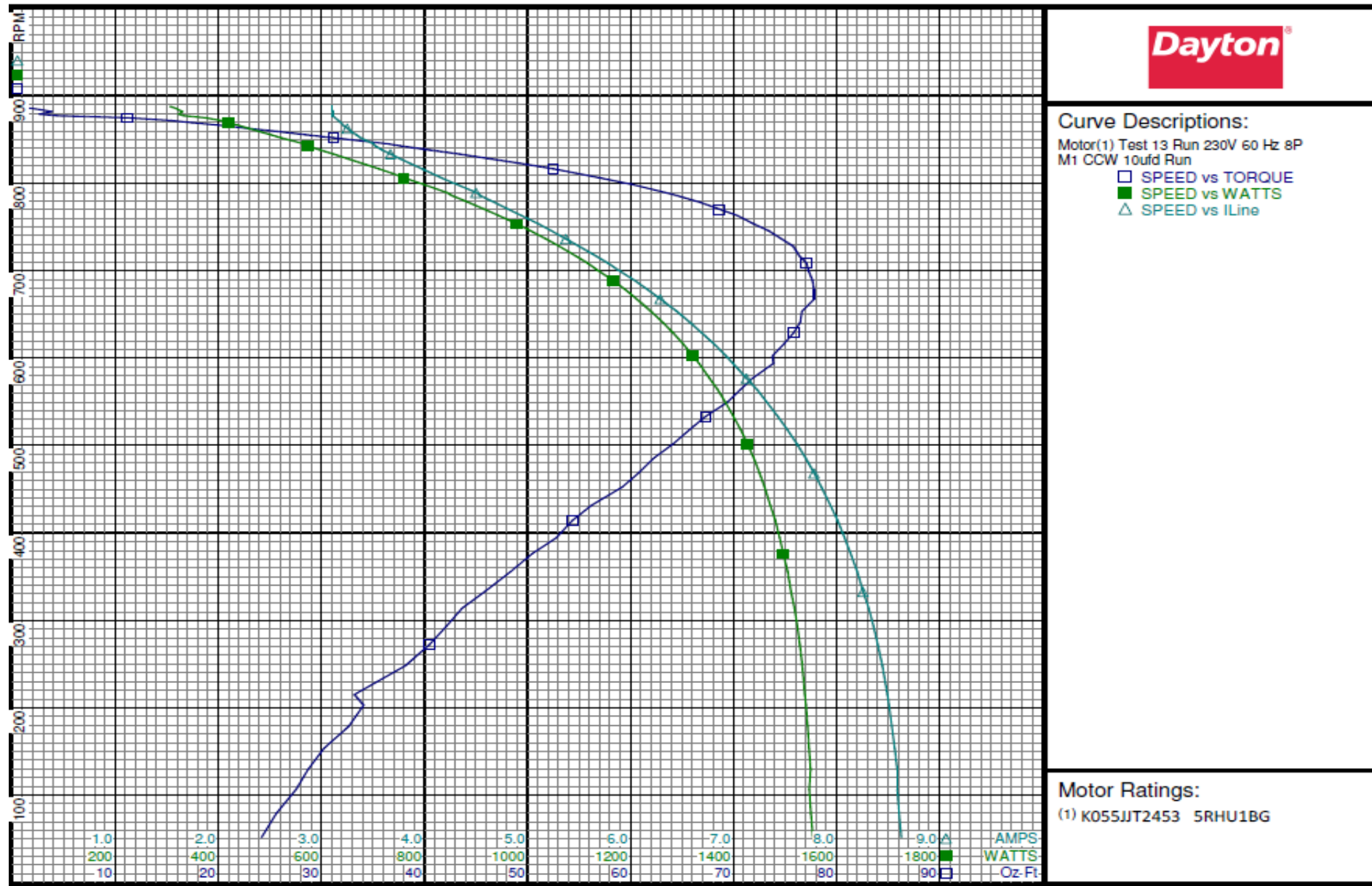
Performance Data



5RHU1BG

REV.

-



DRAWING NO.	PAGE 20 of 32	REV.
5RHU1BG		-

Dayton Electric Mfg. Co. Lake Forest, IL 60045 USA

Performance Data



5RHU1BG

REV.

-

Dayton Manufacturing Company

Motor Description

Model: K055JIT2453 5RHU1BG
 Motor ID:
 Poles: 8
 Volts: 208-230
 Frequency: 60
 HP: 1/2
 Speed: 825
 Phase: 1
 Protector: 7AM036-A5

Test Conditions

Test Type: Start
 Test Number: 6
 Poles: 8
 Volts: 230
 Hz: 60
 Rotation: CCW
 Special Cond:
 Speed Conn: M2
 TestBoard: CMD InLine Three Phase #2 Fixture #1
 Run Cap: 10
 Start Cap: 0µfd
 Environment: 24.2 Deg C 64 % RH 965 hPa
 Tested: 5/18/2016 8:03:19 AM
 Tested By: Bribiesca, Griselda
 Gear Ratio: 1:1
 Bearing Friction: -1.31 Oz-Ft
 Windage Torque: -2.88 Oz-Ft

Special Points	Vline (V)	Vaux (V)	Vcap (V)	Iline (A)	Imain (A)	Iaux (A)	Watts	RPM	Tq(Oz-ft)	HP	Eff (%)	PF (%)	Cap
PUT OZ-FT	230.0	46.5	253.0	6.497	6.967	0.962	1216.3	15	17.20	0.003	0.2	81.4	10.1
	230.0	46.5	253.0	6.497	6.967	0.962	1216.3	15	17.20	0.003	0.2	81.4	10.1
	230.0	49.5	251.5	6.494	6.944	0.956	1217.7	68	18.33	0.015	0.9	81.5	10.1
	230.0	53.0	249.7	6.474	6.902	0.949	1217.0	121	20.74	0.030	1.8	81.7	10.1
	230.0	56.9	248.1	6.432	6.837	0.943	1212.2	171	23.97	0.049	3.0	81.9	10.1
	230.0	61.0	246.7	6.378	6.759	0.938	1205.9	218	26.33	0.068	4.2	82.2	10.1
	230.0	65.4	245.8	6.313	6.671	0.935	1198.7	265	30.28	0.096	5.9	82.6	10.1
	230.0	70.1	245.0	6.237	6.571	0.931	1189.6	309	33.40	0.123	7.7	82.9	10.1
	230.0	74.2	244.7	6.158	6.471	0.930	1179.0	346	35.33	0.145	9.2	83.2	10.1
	230.0	79.8	244.3	6.049	6.334	0.928	1164.7	390	39.67	0.184	11.8	83.7	10.1
	230.0	85.1	244.4	5.938	6.198	0.928	1149.1	428	42.72	0.217	14.1	84.1	10.1
	230.0	90.4	244.9	5.819	6.055	0.931	1132.0	462	45.21	0.249	16.4	84.6	10.1
	230.0	96.4	245.7	5.684	5.892	0.933	1112.0	497	48.78	0.288	19.3	85.1	10.1
	230.0	102.3	246.9	5.546	5.728	0.938	1090.8	528	51.05	0.321	22.0	85.5	10.1
	230.0	108.7	248.6	5.392	5.547	0.945	1066.1	559	53.19	0.354	24.8	86.0	10.1
	230.0	115.0	250.8	5.231	5.360	0.953	1039.6	587	55.07	0.385	27.6	86.4	10.1
	230.0	121.7	253.5	5.059	5.163	0.963	1010.4	615	56.74	0.415	30.7	86.8	10.1
	230.0	128.1	256.5	4.889	4.970	0.975	980.4	639	57.78	0.440	33.4	87.2	10.1
	230.0	135.5	260.4	4.687	4.744	0.990	944.3	665	59.11	0.468	36.9	87.6	10.1
	230.0	142.1	264.3	4.501	4.539	1.005	909.6	686	59.27	0.484	39.7	87.9	10.1
	230.0	149.2	269.1	4.292	4.314	1.023	869.0	707	58.69	0.494	42.4	88.0	10.1
	230.0	156.0	274.0	4.092	4.102	1.042	829.2	726	57.78	0.500	45.0	88.1	10.1
	230.0	162.9	279.6	3.881	3.885	1.063	785.6	745	56.21	0.498	47.3	88.0	10.1
	230.0	169.5	285.1	3.678	3.684	1.084	742.8	761	54.27	0.492	49.4	87.8	10.1
	230.0	176.1	291.0	3.467	3.480	1.107	697.6	777	51.74	0.478	51.2	87.5	10.1
	230.0	182.7	297.4	3.257	3.289	1.131	650.1	792	48.45	0.457	52.4	86.8	10.1
	230.0	187.9	302.8	3.087	3.144	1.152	610.4	804	45.26	0.433	52.9	86.0	10.1
	230.0	190.0	304.9	3.018	3.088	1.160	594.4	808	43.98	0.423	53.1	85.6	10.1
	230.0	199.3	315.5	2.714	2.870	1.200	517.2	828	36.53	0.360	52.0	82.9	10.1
	230.0	204.0	320.7	2.574	2.779	1.220	479.0	838	32.41	0.323	50.3	80.9	10.1
	230.0	208.4	326.0	2.442	2.711	1.240	441.2	847	28.03	0.283	47.8	78.6	10.1
	230.0	212.3	331.0	2.329	2.668	1.259	405.4	855	23.52	0.239	44.0	75.7	10.1
	230.0	215.9	335.6	2.231	2.642	1.277	371.8	862	19.21	0.197	39.6	72.5	10.1
	230.0	219.1	339.8	2.152	2.635	1.293	341.6	868	15.23	0.157	34.4	69.0	10.1
	230.0	221.9	343.5	2.091	2.640	1.307	314.9	874	11.28	0.117	27.8	65.5	10.1
	230.0	224.4	346.9	2.042	2.652	1.320	289.6	879	7.79	0.081	21.0	61.7	10.1
	230.0	226.0	349.4	2.016	2.677	1.329	270.8	883	4.90	0.052	14.2	58.4	10.1
	230.0	227.8	352.1	1.991	2.704	1.340	252.5	887	2.15	0.023	6.7	55.1	10.1
	230.0	228.7	353.5	1.982	2.722	1.345	243.2	890	0.15	0.002	0.5	53.4	10.1

DRAWING NO. PAGE 21 of 32 REV.
5RHU1BG -

Dayton Electric Mfg. Co. Lake Forest, IL 60045 USA

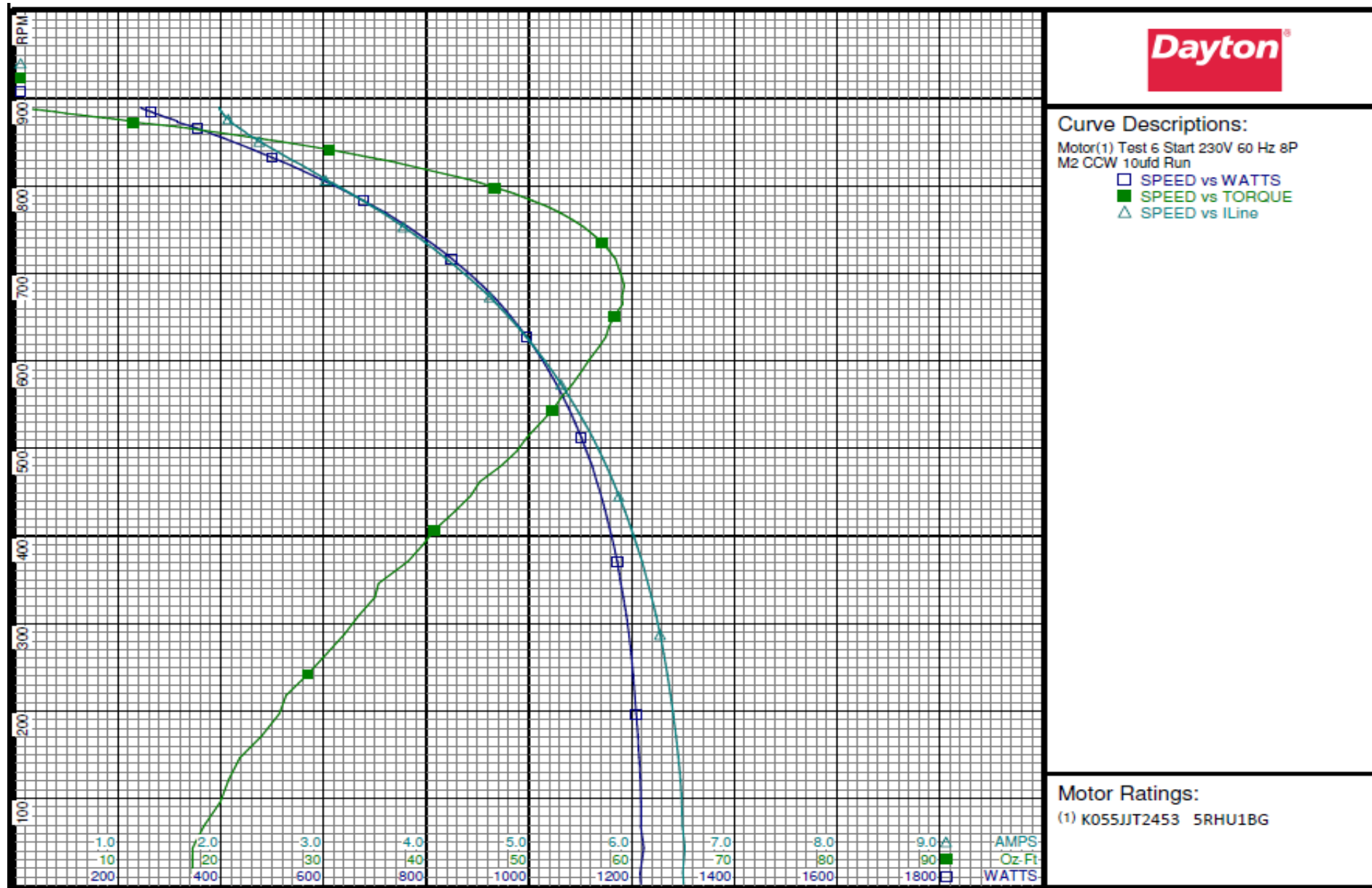
Performance Data



5RHU1BG

REV.

-



DRAWING NO.	PAGE 22 of 32	REV.
5RHU1BG		-

Dayton Electric Mfg. Co. Lake Forest, IL 60045 USA

Performance Data



5RHU1BG

REV.

-

Dayton Manufacturing Company

Motor Description

Model: K055JIT2453 5RHU1BG
 Motor ID:
 Poles: 8
 Volts: 208-230
 Frequency: 60
 HP: 1/2
 Speed: 825
 Phase: 1
 Protector: 7AM036-A5

Test Conditions

Test Type: Run
 Test Number: 14
 Poles: 8
 Volts: 230
 Hz: 60
 Rotation: CCW
 Special Cond:
 Speed Conn: M2
 TestBoard: CMD InLine Three Phase #2 Fixture #1
 Run Cap: 10
 Start Cap: 0µfd
 Environment: 24.2 Deg C 64 % RH 965 hPa
 Tested: 5/18/2016 8:04:47 AM
 Tested By: Bribiesca, Griselda
 Gear Ratio: 1:1
 Bearing Friction: -1.15 Oz-Ft
 Windage Torque: -2.71 Oz-Ft

Special Points	Vline (V)	Vaux (V)	Vcap (V)	Iline (A)	Imain (A)	Iaux (A)	Watts	RPM	Tq(Oz-ft)	HP	Eff(%)	PF(%)	Cap
	230.0	228.9	353.6	1.980	2.727	1.346	238.3	888	0.00	0.000	0.0	52.3	10.1
	230.0	228.6	353.2	1.983	2.722	1.344	241.9	885	0.59	0.006	1.9	53.0	10.1
	230.0	228.0	352.2	1.990	2.707	1.340	249.8	881	1.84	0.019	5.8	54.6	10.1
	230.0	226.3	349.7	2.012	2.682	1.331	266.5	877	4.62	0.048	13.5	57.6	10.1
	230.0	221.7	342.8	2.098	2.636	1.305	317.6	871	12.38	0.128	30.2	65.8	10.1
	230.0	219.0	339.2	2.160	2.633	1.291	344.1	866	16.15	0.167	36.1	69.3	10.1
	230.0	215.7	334.7	2.243	2.641	1.274	376.0	859	20.75	0.212	42.1	72.9	10.1
	230.0	211.7	329.5	2.353	2.670	1.254	414.1	851	25.62	0.259	46.8	76.5	10.1
	230.0	208.0	325.0	2.460	2.719	1.237	445.9	844	29.40	0.295	49.4	78.8	10.1
33.4 OZ-FT	230.0	203.9	319.9	2.587	2.784	1.218	482.9	835	33.40	0.332	51.3	81.2	10.1
0.333 HP	230.0	203.7	319.7	2.592	2.787	1.217	484.4	834	33.53	0.333	51.3	81.2	10.1
	230.0	203.3	319.2	2.607	2.796	1.215	488.4	833	33.92	0.336	51.4	81.5	10.1
	230.0	198.3	313.4	2.762	2.895	1.193	529.8	823	38.98	0.382	53.8	83.4	10.1
	230.0	192.6	307.3	2.946	3.031	1.170	575.9	812	43.23	0.418	54.1	85.0	10.1
	230.0	186.5	300.8	3.144	3.192	1.145	623.4	799	47.58	0.452	54.1	86.2	10.1
	230.0	180.5	294.8	3.337	3.359	1.123	668.3	785	51.06	0.477	53.3	87.1	10.1
	230.0	174.0	288.6	3.548	3.557	1.099	715.2	770	54.24	0.497	51.9	87.6	10.1
58.78 OZ-FT	230.0	167.2	282.7	3.758	3.759	1.076	760.9	754	56.81	0.510	50.0	88.0	10.1
	230.0	160.6	277.1	3.965	3.968	1.056	804.3	737	58.87	0.517	47.9	88.2	10.1
BDT OZ-FT	230.0	153.7	271.9	4.172	4.184	1.036	846.2	719	60.25	0.516	45.5	88.2	10.1
	230.0	146.7	266.9	4.380	4.404	1.017	887.5	699	61.21	0.509	42.8	88.1	10.1
	230.0	139.5	262.3	4.595	4.627	0.999	928.3	677	60.97	0.491	39.5	87.8	10.1
	230.0	132.8	258.3	4.783	4.833	0.984	963.1	654	60.72	0.473	36.6	87.5	10.1
	230.0	126.0	254.9	4.973	5.042	0.971	997.2	630	60.12	0.451	33.7	87.2	10.1
	230.0	119.0	251.9	5.153	5.251	0.959	1028.4	603	58.51	0.420	30.5	86.8	10.1
	230.0	112.6	249.4	5.321	5.440	0.950	1056.8	576	56.84	0.390	27.5	86.4	10.1
	230.0	106.2	247.6	5.472	5.624	0.943	1081.1	546	54.75	0.356	24.6	85.9	10.1
	230.0	99.8	246.2	5.620	5.806	0.938	1104.1	514	51.69	0.317	21.4	85.4	10.1
	230.0	93.8	245.1	5.750	5.965	0.933	1123.8	482	49.53	0.284	18.9	85.0	10.1
	230.0	88.5	244.6	5.863	6.105	0.932	1141.1	451	47.45	0.255	16.7	84.6	10.1
	230.0	83.2	244.4	5.973	6.240	0.931	1156.6	414	44.47	0.219	14.1	84.2	10.1
	230.0	78.0	244.5	6.074	6.366	0.931	1170.5	376	40.87	0.183	11.7	83.8	10.1
	230.0	72.9	244.9	6.165	6.482	0.932	1182.6	335	37.82	0.151	9.5	83.4	10.1
	230.0	68.6	245.5	6.234	6.573	0.935	1191.6	294	35.13	0.123	7.7	83.1	10.1
	230.0	64.0	246.2	6.304	6.665	0.937	1200.1	247	31.06	0.091	5.7	82.8	10.1
	230.0	59.9	247.3	6.355	6.737	0.941	1206.7	203	29.09	0.070	4.3	82.6	10.1
	230.0	55.7	248.8	6.392	6.798	0.948	1210.2	155	25.88	0.048	2.9	82.3	10.1
	230.0	52.1	250.4	6.429	6.855	0.953	1215.6	102	22.66	0.027	1.7	82.2	10.1
	230.0	48.8	252.4	6.423	6.872	0.961	1212.5	52	20.84	0.013	0.8	82.1	10.1

DRAWING NO. PAGE 23 of 32 REV.
5RHU1BG -

Dayton Electric Mfg. Co. Lake Forest, IL 60045 USA

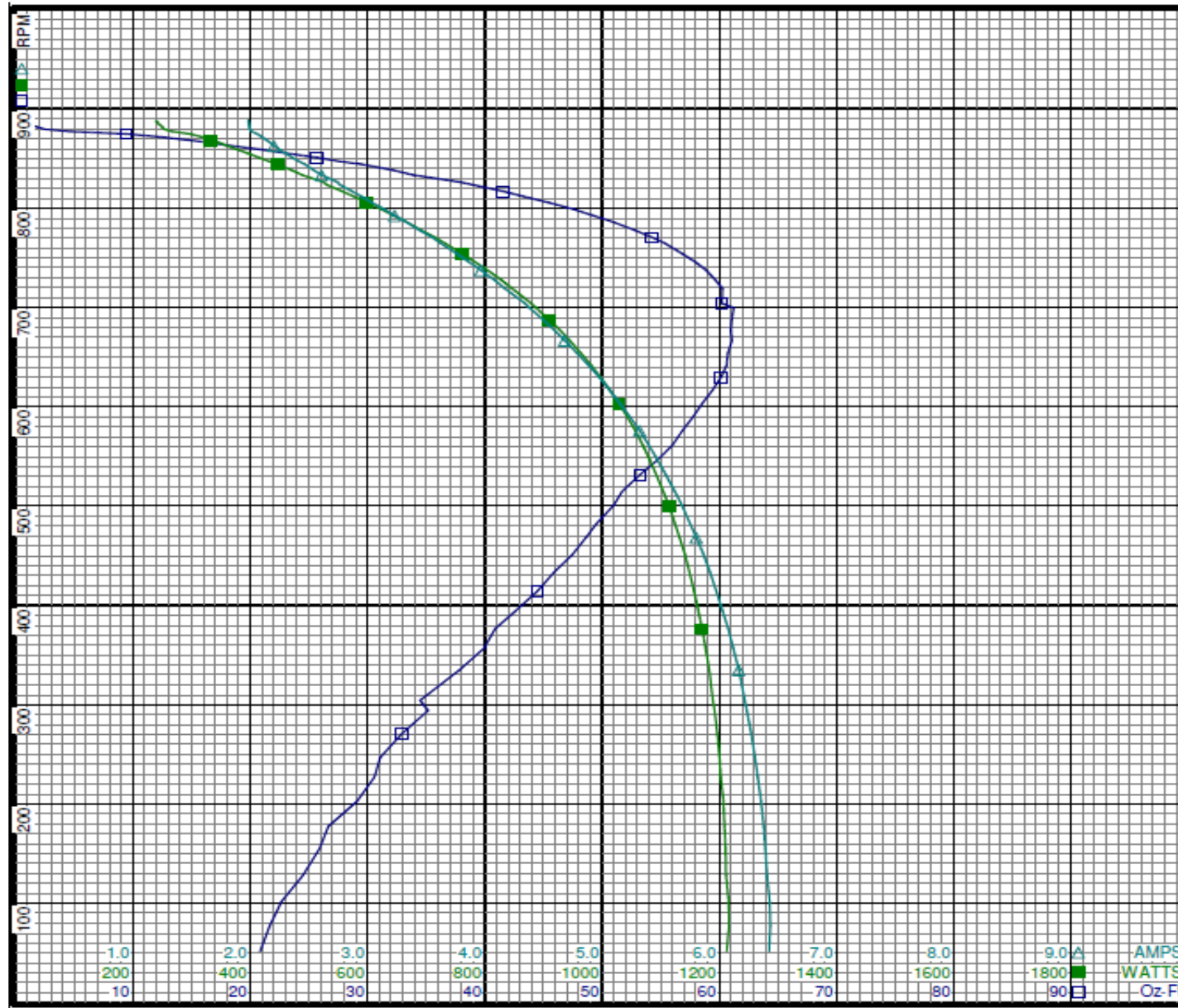
Performance Data



5RHU1BG

REV.

-



Curve Descriptions:

Motor(1) Test 14 Run 230V 60 Hz 8P
M2 CCW 10ufd Run

- SPEED vs TORQUE
- SPEED vs WATTS
- △ SPEED vs ILine

Motor Ratings:

(1) K055JIT2453 5RHU1BG

DRAWING NO.	PAGE 24 of 32	REV.
5RHU1BG		-

Dayton Electric Mfg. Co. Lake Forest, IL 60045 USA

Performance Data



5RHU1BG

REV.

-

Dayton Manufacturing Company

Motor Description

Model: K055JJT2453 5RHU1BG
 Motor ID:
 Poles: 8
 Volts: 208-230
 Frequency: 60
 HP: 1/2
 Speed: 825
 Phase: 1
 Protector: 7AM036-A5

Test Conditions

Test Type: Start
 Test Number: 7
 Poles: 8
 Volts: 230
 Hz: 60
 Rotation: CCW
 Special Cond:
 Speed Conn: M3
 TestBoard: CMD InLine Three Phase #2 Fixture #1
 Run Cap: 10
 Start Cap: 0µfd
 Environment: 24.0 Deg C 56 % RH 965 hPa
 Tested: 5/18/2016 8:40:05 AM
 Tested By: Navarro, Susana
 Gear Ratio: 1:1
 Bearing Friction: -1.23 Oz-Ft
 Windage Torque: -3.03 Oz-Ft

Special Points	Vline (V)	Vaux (V)	Vcap (V)	Iline (A)	Imain (A)	Iaux (A)	Watts	RPM	Tq(Oz-ft)	HP	Eff (%)	PF (%)	Cap
PUT OZ-FT	230.0	45.9	251.9	5.136	5.585	0.959	988.4	17	15.48	0.003	0.2	83.7	10.1
	230.0	45.9	251.9	5.136	5.585	0.959	988.4	17	15.48	0.003	0.2	83.7	10.1
	230.0	48.7	251.6	5.118	5.551	0.957	987.8	70	15.85	0.013	1.0	83.9	10.1
	230.0	51.8	249.5	5.094	5.506	0.949	984.3	124	18.05	0.027	2.0	84.0	10.1
	230.0	54.9	248.4	5.061	5.455	0.945	980.6	171	19.44	0.040	3.0	84.2	10.1
	230.0	58.4	247.4	5.018	5.392	0.941	975.7	219	22.33	0.058	4.5	84.5	10.1
	230.0	62.6	246.3	4.965	5.316	0.937	969.2	267	24.86	0.079	6.1	84.9	10.1
	230.0	66.2	245.8	4.906	5.238	0.935	961.5	307	27.13	0.099	7.7	85.2	10.1
	230.0	70.6	245.1	4.836	5.143	0.933	952.6	352	29.77	0.125	9.8	85.6	10.1
	230.0	74.8	244.9	4.764	5.049	0.931	942.6	388	31.87	0.147	11.6	86.0	10.1
	230.0	79.7	244.8	4.671	4.931	0.931	929.6	428	35.11	0.179	14.3	86.5	10.1
	230.0	84.5	245.1	4.579	4.815	0.933	916.3	463	37.18	0.205	16.7	87.0	10.1
	230.0	89.8	245.6	4.474	4.684	0.934	900.2	497	39.83	0.236	19.5	87.5	10.1
	230.0	94.9	246.6	4.367	4.553	0.938	883.5	529	41.59	0.262	22.1	88.0	10.1
	230.0	100.7	248.0	4.242	4.403	0.944	863.4	559	43.68	0.291	25.1	88.5	10.1
	230.0	106.5	249.8	4.114	4.249	0.949	841.5	588	44.90	0.314	27.9	88.9	10.1
	230.0	112.5	252.0	3.977	4.088	0.959	818.0	615	46.20	0.338	30.9	89.4	10.1
	230.0	118.4	254.7	3.838	3.926	0.969	793.3	640	47.31	0.361	33.9	89.9	10.1
	230.0	124.2	257.4	3.699	3.765	0.979	768.3	663	48.03	0.379	36.8	90.3	10.1
	230.0	130.7	261.1	3.540	3.586	0.993	738.2	686	48.19	0.394	39.8	90.7	10.1
	230.0	137.1	265.1	3.373	3.402	1.009	705.9	707	47.74	0.402	42.5	91.0	10.1
	230.0	143.3	269.4	3.213	3.229	1.025	673.9	726	47.01	0.407	45.0	91.2	10.1
	230.0	149.6	274.1	3.043	3.053	1.043	639.1	745	45.78	0.406	47.4	91.3	10.1
	230.0	155.5	278.9	2.880	2.889	1.062	605.1	761	44.10	0.400	49.3	91.3	10.1
	230.0	161.1	283.7	2.722	2.733	1.080	571.8	776	42.27	0.390	50.9	91.3	10.1
	230.0	167.5	289.7	2.538	2.566	1.103	530.9	792	39.40	0.371	52.2	90.9	10.1
	230.0	172.7	294.7	2.387	2.438	1.122	496.7	804	36.74	0.352	52.8	90.5	10.1
	230.0	178.0	300.2	2.231	2.316	1.143	460.7	816	33.41	0.325	52.6	89.8	10.1
	230.0	182.1	304.6	2.108	2.230	1.160	431.1	825	30.88	0.303	52.5	88.9	10.1
	230.0	185.5	308.7	2.013	2.176	1.174	406.4	835	27.22	0.271	49.7	87.8	10.1
	230.0	191.7	315.6	1.829	2.076	1.202	360.1	847	22.62	0.228	47.2	85.6	10.1
	230.0	195.5	320.3	1.721	2.042	1.220	329.5	855	18.73	0.191	43.2	83.3	10.1
	230.0	198.7	324.3	1.635	2.024	1.235	303.9	862	15.20	0.156	38.3	80.8	10.1
	230.0	202.8	329.3	1.530	2.010	1.254	271.5	870	10.84	0.112	30.9	77.1	10.1
	230.0	204.6	331.8	1.486	2.016	1.264	255.7	874	8.81	0.092	26.8	74.8	10.1
	230.0	206.6	334.9	1.437	2.027	1.275	236.8	879	5.90	0.062	19.4	71.7	10.1
	230.0	208.2	337.1	1.405	2.042	1.284	222.6	883	3.60	0.038	12.7	68.9	10.1
	230.0	210.0	339.4	1.370	2.057	1.292	207.6	887	1.23	0.013	4.7	65.9	10.1
	230.0	210.9	340.7	1.357	2.070	1.297	200.2	889	0.00	0.000	0.0	64.1	10.1

DRAWING NO. PAGE 25 of 32 REV.
5RHU1BG -

Dayton Electric Mfg. Co. Lake Forest, IL 60045 USA

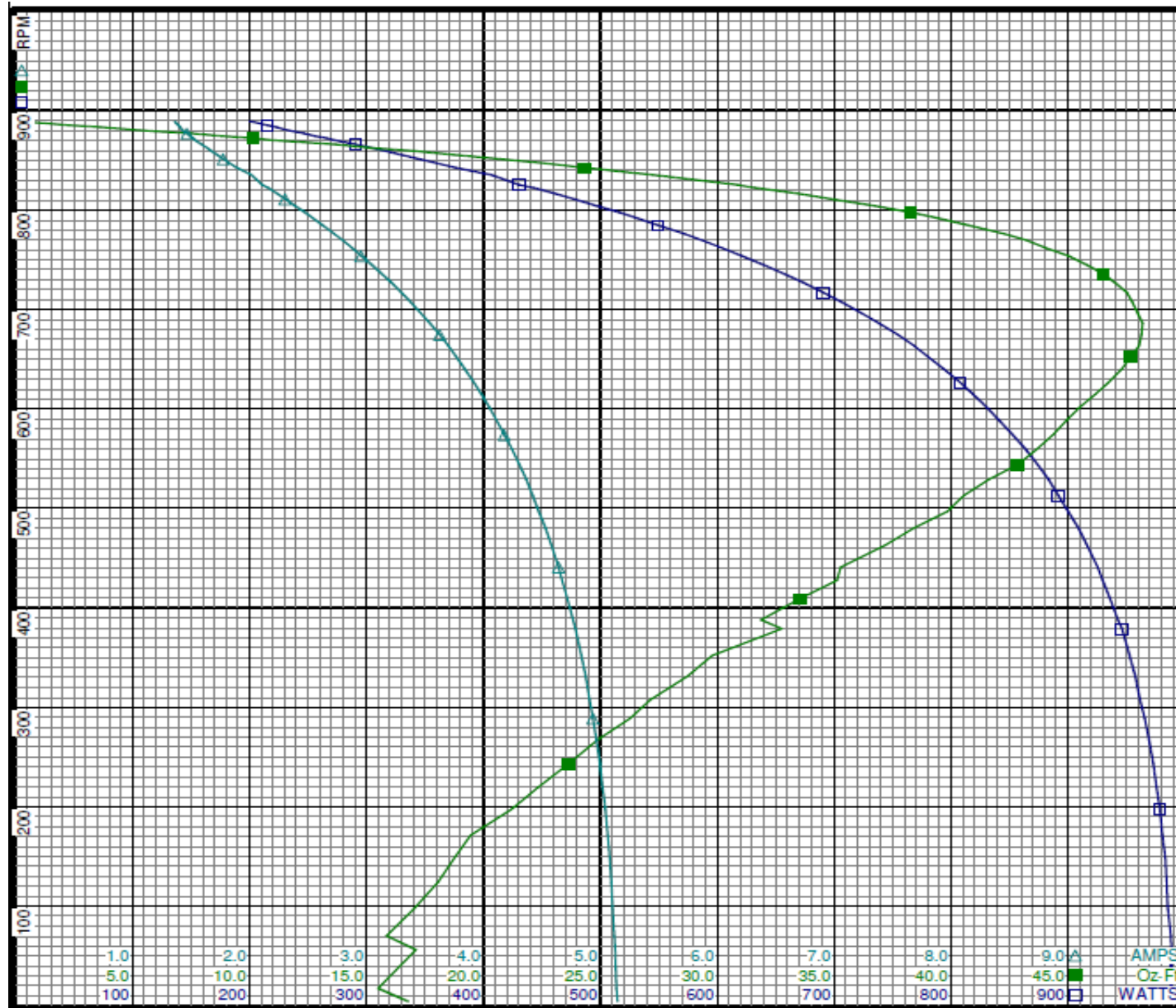
Performance Data



5RHU1BG

REV.

-



Curve Descriptions:

Motor(1) Test 7 Start 230V 60 Hz 8P
M3 CCW 10ufd Run

- SPEED vs WATTS
- SPEED vs TORQUE
- △ SPEED vs ILine

Motor Ratings:

(1) K055JJT2453 5RHU1BG

DRAWING NO.	PAGE 26 of 32	REV.
5RHU1BG		-

Dayton Electric Mfg. Co. Lake Forest, IL 60045 USA

Performance Data



5RHU1BG

REV.

-

Dayton Manufacturing Company

Motor Description

Model: K055JJT2453 5RHU1BG
 Motor ID:
 Poles: 8
 Volts: 208-230
 Frequency: 60
 HP: 1/2
 Speed: 825
 Phase: 1
 Protector: 7AM036-A5

Test Conditions

Test Type: Run
 Test Number: 15
 Poles: 8
 Volts: 230
 Hz: 60
 Rotation: CCW
 Special Cond:
 Speed Conn: M3
 TestBoard: CMD InLine Three Phase #2 Fixture #1
 Run Cap: 10
 Start Cap: 0ufd
 Environment: 24.0 Deg C 56 % RH 965 hPa
 Tested: 5/18/2016 8:42:30 AM
 Tested By: Navarro, Susana
 Gear Ratio: 1:1
 Bearing Friction: -1.24 Oz-Ft
 Windage Torque: -3.00 Oz-Ft

Special Points	Vline (V)	Vaux (V)	Vcap (V)	Iline (A)	Imain (A)	Iaux (A)	Watts	RPM	Tq (Oz-ft)	HP	Eff (%)	PF (%)	Cap
	230.0	210.9	340.5	1.356	2.075	1.297	198.0	883	0.00	0.000	0.0	63.5	10.1
	230.0	210.3	339.5	1.368	2.062	1.293	204.8	879	1.26	0.013	4.8	65.1	10.1
	230.0	205.9	333.4	1.456	2.021	1.270	243.8	874	7.31	0.076	23.3	72.8	10.1
	230.0	202.7	328.9	1.535	2.009	1.253	273.1	869	11.47	0.119	32.4	77.3	10.1
	230.0	199.9	325.1	1.608	2.010	1.238	297.0	863	14.95	0.154	38.6	80.3	10.1
	230.0	196.5	320.8	1.701	2.029	1.222	324.7	855	19.00	0.193	44.4	83.0	10.1
	230.0	192.9	316.6	1.802	2.068	1.206	352.0	847	22.33	0.225	47.7	84.9	10.1
	230.0	189.9	313.1	1.888	2.104	1.193	375.5	841	25.10	0.251	49.9	86.4	10.1
25.1 OZ-FT	230.0	189.9	313.1	1.888	2.104	1.193	375.5	841	25.10	0.251	49.9	86.4	10.1
0.25 HP	230.0	190.1	313.2	1.884	2.102	1.193	374.3	841	24.97	0.250	49.8	86.4	10.1
	230.0	189.0	312.0	1.915	2.118	1.189	382.2	839	25.82	0.258	50.3	86.8	10.1
	230.0	184.6	307.0	2.044	2.193	1.169	414.5	829	29.62	0.292	52.6	88.2	10.1
	230.0	179.0	300.9	2.211	2.303	1.146	455.4	817	33.43	0.325	53.3	89.6	10.1
	230.0	174.0	295.6	2.359	2.416	1.127	490.2	805	37.35	0.358	54.5	90.3	10.1
	230.0	168.4	290.1	2.521	2.551	1.106	527.2	792	40.46	0.382	54.0	90.9	10.1
	230.0	162.5	284.5	2.692	2.704	1.084	565.2	778	43.29	0.401	52.9	91.3	10.1
	230.0	156.6	279.4	2.861	2.868	1.065	601.3	763	45.47	0.413	51.2	91.4	10.1
47.28 OZ-FT	230.0	150.8	274.7	3.023	3.030	1.047	635.5	747	47.28	0.421	49.4	91.4	10.1
	230.0	150.2	274.2	3.039	3.046	1.045	638.8	746	47.42	0.421	49.2	91.4	10.1
	230.0	144.2	269.7	3.199	3.213	1.028	671.8	728	48.82	0.423	47.0	91.3	10.1
	230.0	137.7	265.1	3.372	3.398	1.011	706.4	708	49.73	0.419	44.3	91.1	10.1
	230.0	131.3	261.1	3.539	3.582	0.995	738.7	688	50.20	0.411	41.5	90.8	10.1
BDT OZ-FT	230.0	125.2	257.6	3.691	3.753	0.982	767.6	666	50.24	0.398	38.7	90.4	10.1
	230.0	125.2	257.6	3.691	3.753	0.982	767.6	666	50.24	0.398	38.7	90.4	10.1
	230.0	118.7	254.3	3.848	3.932	0.970	796.3	642	49.56	0.379	35.5	90.0	10.1
	230.0	112.5	251.8	3.993	4.101	0.960	822.1	617	48.53	0.356	32.3	89.5	10.1
	230.0	106.6	249.6	4.128	4.261	0.952	845.6	590	47.20	0.332	29.3	89.1	10.1
	230.0	100.9	247.7	4.255	4.413	0.944	866.6	561	45.69	0.305	26.3	88.5	10.1
	230.0	95.5	246.5	4.367	4.550	0.939	884.7	532	43.97	0.278	23.5	88.1	10.1
	230.0	90.3	245.5	4.474	4.680	0.936	901.5	502	42.35	0.253	21.0	87.6	10.1
	230.0	85.1	245.0	4.577	4.809	0.933	916.9	467	39.45	0.219	17.8	87.1	10.1
	230.0	80.2	244.8	4.669	4.925	0.933	930.5	431	37.33	0.192	15.4	86.7	10.1
	230.0	75.5	244.8	4.753	5.032	0.932	942.7	393	34.70	0.162	12.9	86.2	10.1
	230.0	71.1	245.1	4.825	5.127	0.934	952.4	355	32.60	0.138	10.8	85.8	10.1
	230.0	66.9	245.7	4.888	5.213	0.937	960.9	314	30.20	0.113	8.8	85.5	10.1
	230.0	63.2	246.3	4.941	5.285	0.939	968.0	274	28.30	0.092	7.1	85.2	10.1
	230.0	59.1	247.3	4.988	5.355	0.942	973.3	225	25.13	0.067	5.2	84.8	10.1
	230.0	55.7	248.3	5.025	5.411	0.946	977.9	178	22.55	0.048	3.7	84.6	10.1
	230.0	52.4	249.7	5.046	5.451	0.952	979.8	131	21.04	0.033	2.5	84.4	10.1
	230.0	49.3	251.3	5.074	5.498	0.957	984.4	77	18.90	0.017	1.3	84.3	10.1

DRAWING NO. PAGE 27 of 32 REV.
5RHU1BG -

Dayton Electric Mfg. Co. Lake Forest, IL 60045 USA

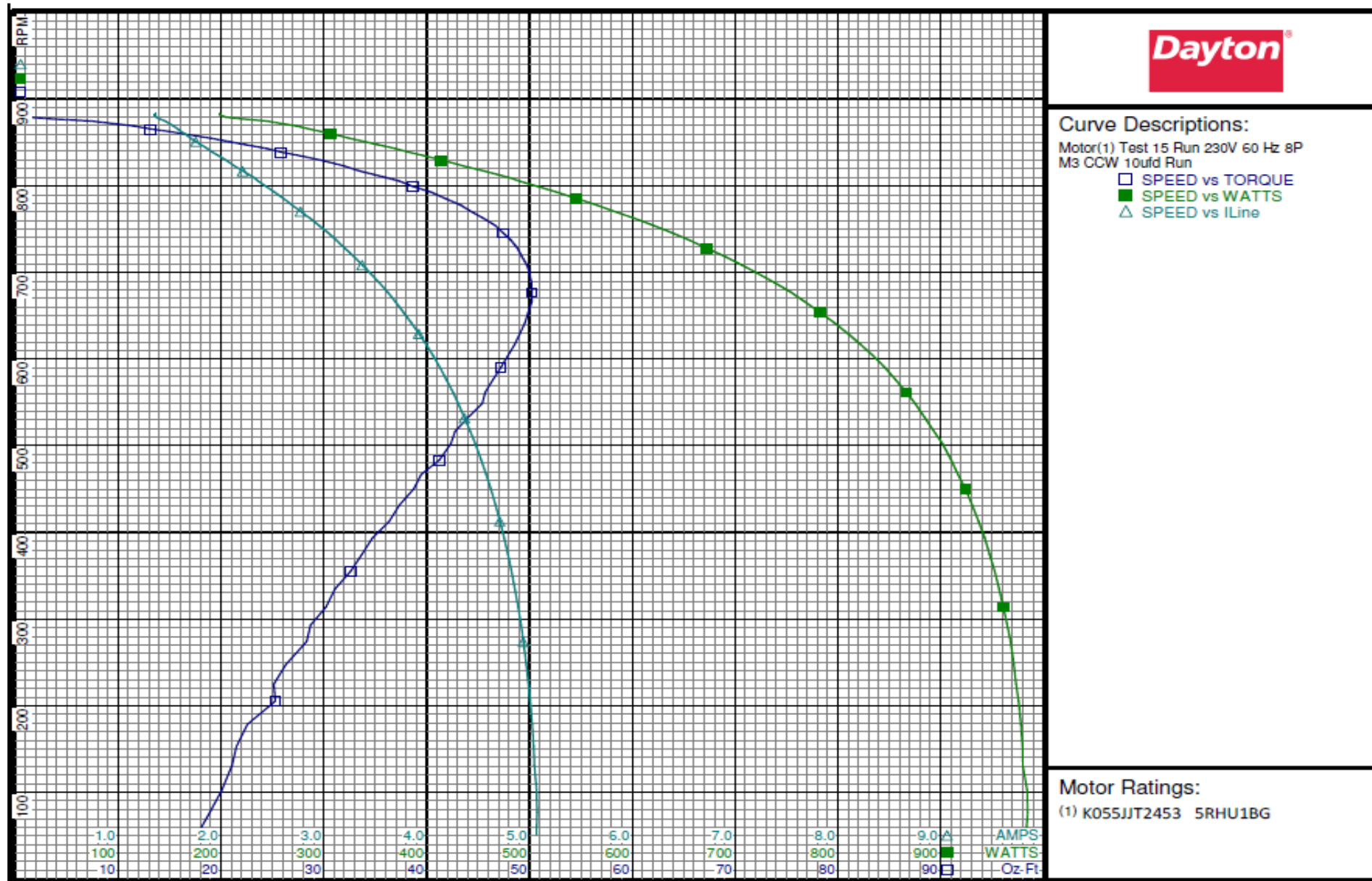
Performance Data



5RHU1BG

REV.

-



DRAWING NO.	PAGE 28 of 32	REV.
5RHU1BG		0

Dayton Electric Mfg. Co. Lake Forest, IL 60045 USA

Performance Data



5RHU1BG

REV.

-

Dayton Manufacturing Company

Motor Description

Model: K055JIT2453 5RHU1BG
 Motor ID:
 Poles: 8
 Volts: 208-230
 Frequency: 60
 HP: 1/2
 Speed: 825
 Phase: 1
 Protector: 7AM036-A5

Test Conditions

Test Type: Start
 Test Number: 8
 Poles: 8
 Volts: 230
 Hz: 60
 Rotation: CCW
 Special Cond:
 Speed Conn: M4
 TestBoard: CMD InLine Three Phase #2 Fixture #1
 Run Cap: 10
 Start Cap: 0µfd
 Environment: 24.0 Deg C 56 % RH 965 hPa
 Tested: 5/18/2016 9:01:01 AM
 Tested By: Navarro, Susana
 Gear Ratio: 1:1
 Bearing Friction: -1.24 Oz-Ft
 Windage Torque: -2.84 Oz-Ft

Special Points	Vline (V)	Vaux (V)	Vcap (V)	Iline (A)	Imain (A)	Iaux (A)	Watts	RPM	Tq(Oz-ft)	HP	Eff(%)	PF(%)	Cap
	230.0	46.7	252.0	4.070	4.487	0.959	810.4	18	14.17	0.003	0.3	86.6	10.1
PUT OZ-FT	230.0	47.9	252.9	4.056	4.471	0.962	808.9	41	12.29	0.006	0.6	86.7	10.1
	230.0	49.3	251.3	4.057	4.459	0.956	808.9	70	13.77	0.011	1.1	86.7	10.1
	230.0	52.1	250.2	4.039	4.425	0.952	807.0	123	15.52	0.023	2.1	86.9	10.1
	230.0	55.1	248.8	4.016	4.382	0.947	804.3	172	17.32	0.035	3.3	87.1	10.1
	230.0	58.4	247.8	3.986	4.332	0.943	800.9	217	19.18	0.050	4.6	87.4	10.1
	230.0	61.9	247.0	3.944	4.270	0.940	795.6	265	21.71	0.069	6.4	87.7	10.1
	230.0	65.5	246.3	3.897	4.203	0.937	789.3	309	23.74	0.087	8.3	88.1	10.1
	230.0	69.3	245.9	3.841	4.126	0.936	781.3	349	25.60	0.106	10.2	88.4	10.1
	230.0	73.4	245.6	3.779	4.041	0.934	772.8	390	28.19	0.131	12.6	88.9	10.1
	230.0	77.8	245.6	3.708	3.947	0.935	762.0	428	29.87	0.152	14.9	89.4	10.1
	230.0	82.3	245.9	3.630	3.845	0.936	750.3	464	31.98	0.177	17.6	89.9	10.1
	230.0	86.8	246.5	3.553	3.745	0.937	737.8	495	33.36	0.197	19.9	90.3	10.1
	230.0	91.3	247.2	3.472	3.642	0.940	724.7	526	35.10	0.220	22.6	90.8	10.1
	230.0	96.9	248.5	3.366	3.509	0.945	706.8	559	36.65	0.244	25.7	91.3	10.1
	230.0	102.1	250.1	3.266	3.385	0.951	689.4	587	37.82	0.264	28.6	91.8	10.1
	230.0	107.7	252.1	3.153	3.248	0.959	669.5	615	38.99	0.286	31.8	92.3	10.1
	230.0	113.2	254.5	3.040	3.113	0.969	648.6	640	39.63	0.302	34.8	92.8	10.1
	230.0	118.6	257.1	2.926	2.978	0.978	627.2	664	40.26	0.318	37.8	93.2	10.1
	230.0	124.4	260.3	2.801	2.834	0.990	603.0	686	40.26	0.329	40.7	93.6	10.1
	230.0	130.3	264.0	2.667	2.683	1.005	576.3	708	39.81	0.335	43.4	94.0	10.1
	230.0	135.7	267.6	2.544	2.549	1.018	551.4	726	39.04	0.337	45.7	94.2	10.1
	230.0	141.6	271.9	2.403	2.401	1.035	522.2	745	37.93	0.336	48.1	94.5	10.1
	230.0	146.8	276.1	2.277	2.274	1.051	495.6	761	36.51	0.331	49.8	94.6	10.1
	230.0	152.4	280.8	2.135	2.135	1.069	465.2	777	34.70	0.321	51.5	94.7	10.1
	230.0	157.9	285.8	1.996	2.011	1.088	434.5	792	32.31	0.305	52.3	94.6	10.1
	230.0	162.7	290.4	1.870	1.908	1.106	406.3	804	30.01	0.287	52.8	94.5	10.1
	230.0	167.2	295.0	1.750	1.818	1.123	379.1	816	27.38	0.266	52.4	94.2	10.1
	230.0	172.0	300.1	1.620	1.735	1.143	348.6	828	24.21	0.239	51.1	93.6	10.1
	230.0	175.2	303.4	1.535	1.686	1.156	328.6	835	22.18	0.220	50.1	93.1	10.1
	230.0	177.6	306.6	1.469	1.662	1.167	311.6	843	19.42	0.195	46.7	92.2	10.1
	230.0	183.2	313.0	1.315	1.608	1.192	273.3	855	15.12	0.154	42.0	90.4	10.1
	230.0	187.2	317.8	1.210	1.592	1.210	245.7	864	10.96	0.113	34.2	88.3	10.1
	230.0	188.9	320.0	1.165	1.591	1.218	232.9	869	9.40	0.097	31.1	86.9	10.1
	230.0	191.4	323.1	1.106	1.597	1.230	215.9	874	6.99	0.073	25.1	84.9	10.1
	230.0	193.4	326.0	1.053	1.611	1.242	199.2	879	4.46	0.047	17.5	82.2	10.1
	230.0	194.9	328.0	1.021	1.626	1.249	188.4	883	2.48	0.026	10.3	80.2	10.1
	230.0	196.5	330.1	0.984	1.637	1.257	175.8	887	0.58	0.006	2.6	77.7	10.1
	230.0	197.0	330.8	0.975	1.644	1.260	172.5	888	0.00	0.000	0.0	76.9	10.1

DRAWING NO. PAGE 29 of 32 REV.
5RHU1BG 0

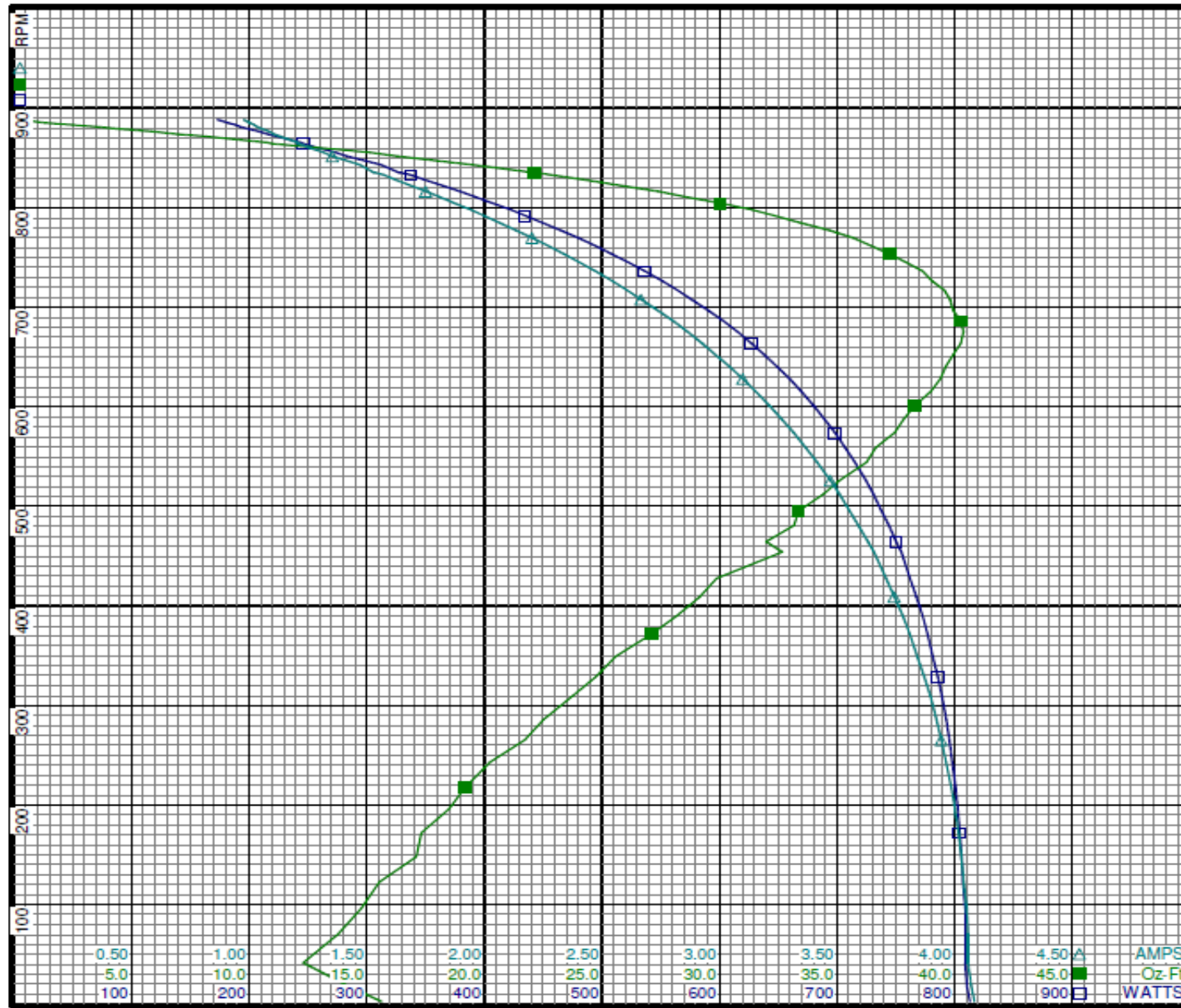
Dayton Electric Mfg. Co. Lake Forest, IL 60045 USA

Performance Data



5RHU1BG

REV.
0



Curve Descriptions:
 Motor(1) Test 8 Start 230V 60 Hz 8P
 M4 CCW 10ufd Run
 □ SPEED vs WATTS
 ■ SPEED vs TORQUE
 △ SPEED vs ILine

Motor Ratings:
 (1) K055JIT2453 5RHU1BG

DRAWING NO.	PAGE 30 of 32	REV.
5RHU1BG		0

Dayton Electric Mfg. Co. Lake Forest, IL 60045 USA

Performance Data



5RHU1BG

REV.
0

Dayton Manufacturing Company

Motor Description

Model: K055JIT2453 5RHU1BG
 Motor ID:
 Poles: 8
 Volts: 208-230
 Frequency: 60
 HP: 1/2
 Speed: 825
 Phase: 1
 Protector: 7AM036-A5

Test Conditions

Test Type: Run
 Test Number: 16
 Poles: 8
 Volts: 230
 Hz: 60
 Rotation: CCW
 Special Cond:
 Speed Conn: M4
 TestBoard: CMD InLine Three Phase #2 Fixture #1
 Run Cap: 10
 Start Cap: 0µfd
 Environment: 24.0 Deg C 56 % RH 965 hPa
 Tested: 5/18/2016 9:03:00 AM
 Tested By: Navarro, Susana
 Gear Ratio: 1:1
 Bearing Friction: -1.04 Oz-Ft
 Windage Torque: -2.91 Oz-Ft

Special Points	Vline (V)	Vaux (V)	Vcap (V)	Iline (A)	Imain (A)	Iaux (A)	Watts	RPM	Tq (Oz-ft)	HP	Eff (%)	PF (%)	Cap
	230.0	197.0	330.8	0.971	1.648	1.260	170.1	882	0.00	0.000	0.0	76.2	10.1
	230.0	197.1	330.9	0.970	1.648	1.261	170.0	879	0.06	0.001	0.3	76.2	10.1
	230.0	194.4	326.8	1.031	1.611	1.245	192.3	875	3.90	0.041	15.8	81.1	10.1
	230.0	189.8	320.8	1.146	1.591	1.222	227.5	868	9.39	0.097	31.8	86.3	10.1
	230.0	187.1	317.5	1.217	1.595	1.209	247.0	862	12.08	0.124	37.5	88.3	10.1
	230.0	183.9	313.4	1.302	1.603	1.194	270.1	855	15.15	0.154	42.6	90.2	10.1
	230.0	180.5	309.1	1.394	1.626	1.178	294.0	847	18.48	0.186	47.3	91.7	10.1
20.16 OZ-FT	230.0	178.5	307.0	1.447	1.649	1.170	306.7	842	20.16	0.202	49.1	92.2	10.1
0.2 HP	230.0	178.8	307.3	1.440	1.646	1.171	305.1	842	19.94	0.200	48.9	92.1	10.1
	230.0	177.1	305.4	1.486	1.667	1.164	316.2	838	21.50	0.214	50.6	92.5	10.1
	230.0	172.6	300.5	1.608	1.728	1.145	345.6	828	24.58	0.242	52.3	93.5	10.1
	230.0	168.1	295.6	1.728	1.804	1.126	373.9	817	27.92	0.271	54.2	94.1	10.1
	230.0	163.6	291.0	1.851	1.892	1.109	402.0	806	30.60	0.293	54.5	94.5	10.1
	230.0	157.2	284.8	2.020	2.033	1.085	439.8	789	33.57	0.315	53.5	94.7	10.1
	230.0	153.4	281.1	2.124	2.115	1.071	462.9	777	35.87	0.332	53.5	94.8	10.1
38.38 OZ-FT	230.0	148.0	276.5	2.262	2.247	1.054	492.5	762	37.80	0.343	52.0	94.7	10.1
	230.0	146.4	275.1	2.302	2.285	1.048	501.3	757	38.38	0.346	51.5	94.7	10.1
	230.0	142.3	271.8	2.402	2.386	1.036	522.3	745	39.49	0.350	50.0	94.6	10.1
	230.0	137.1	267.9	2.527	2.517	1.022	548.3	728	40.78	0.354	48.1	94.4	10.1
	230.0	131.2	263.9	2.664	2.667	1.006	576.4	709	41.56	0.351	45.4	94.1	10.1
	230.0	125.2	260.1	2.802	2.819	0.992	603.8	687	42.08	0.344	42.5	93.7	10.1
BDT OZ-FT	230.0	119.0	257.0	2.925	2.977	0.980	627.7	666	42.29	0.335	39.8	93.3	10.1
	230.0	119.0	257.0	2.925	2.977	0.980	627.7	666	42.29	0.335	39.8	93.3	10.1
	230.0	113.3	254.2	3.049	3.120	0.969	651.0	641	41.74	0.319	36.5	92.8	10.1
	230.0	108.1	251.9	3.164	3.249	0.960	672.1	616	40.97	0.301	33.4	92.4	10.1
	230.0	102.9	250.0	3.269	3.373	0.953	691.0	591	40.13	0.282	30.5	91.9	10.1
	230.0	97.3	248.3	3.373	3.507	0.946	708.7	561	38.84	0.259	27.3	91.4	10.1
	230.0	92.1	247.2	3.466	3.630	0.942	724.6	531	37.69	0.238	24.5	90.9	10.1
	230.0	87.3	246.3	3.552	3.740	0.939	738.5	500	35.89	0.214	21.6	90.4	10.1
	230.0	82.8	245.9	3.631	3.840	0.937	751.1	466	33.94	0.188	18.7	89.9	10.1
	230.0	78.2	245.6	3.706	3.938	0.936	762.6	430	32.25	0.165	16.2	89.5	10.1
	230.0	74.0	245.6	3.772	4.025	0.935	772.6	394	30.37	0.142	13.7	89.1	10.1
	230.0	70.0	245.9	3.830	4.106	0.937	781.0	354	28.22	0.119	11.4	88.7	10.1
	230.0	66.1	246.4	3.880	4.181	0.939	788.1	314	26.40	0.099	9.3	88.3	10.1
	230.0	62.8	246.9	3.926	4.241	0.941	794.5	273	24.64	0.080	7.5	88.0	10.1
	230.0	59.2	247.7	3.961	4.301	0.944	798.8	225	22.44	0.060	5.6	87.7	10.1
	230.0	55.8	248.8	3.993	4.350	0.948	803.1	177	20.57	0.043	4.0	87.4	10.1
	230.0	52.9	249.8	4.012	4.388	0.952	805.1	130	18.88	0.029	2.7	87.3	10.1
	230.0	49.9	251.6	4.029	4.423	0.958	807.9	76	17.10	0.015	1.4	87.2	10.1

DRAWING NO. PAGE 31 of 32 REV.
5RHU1BG 0

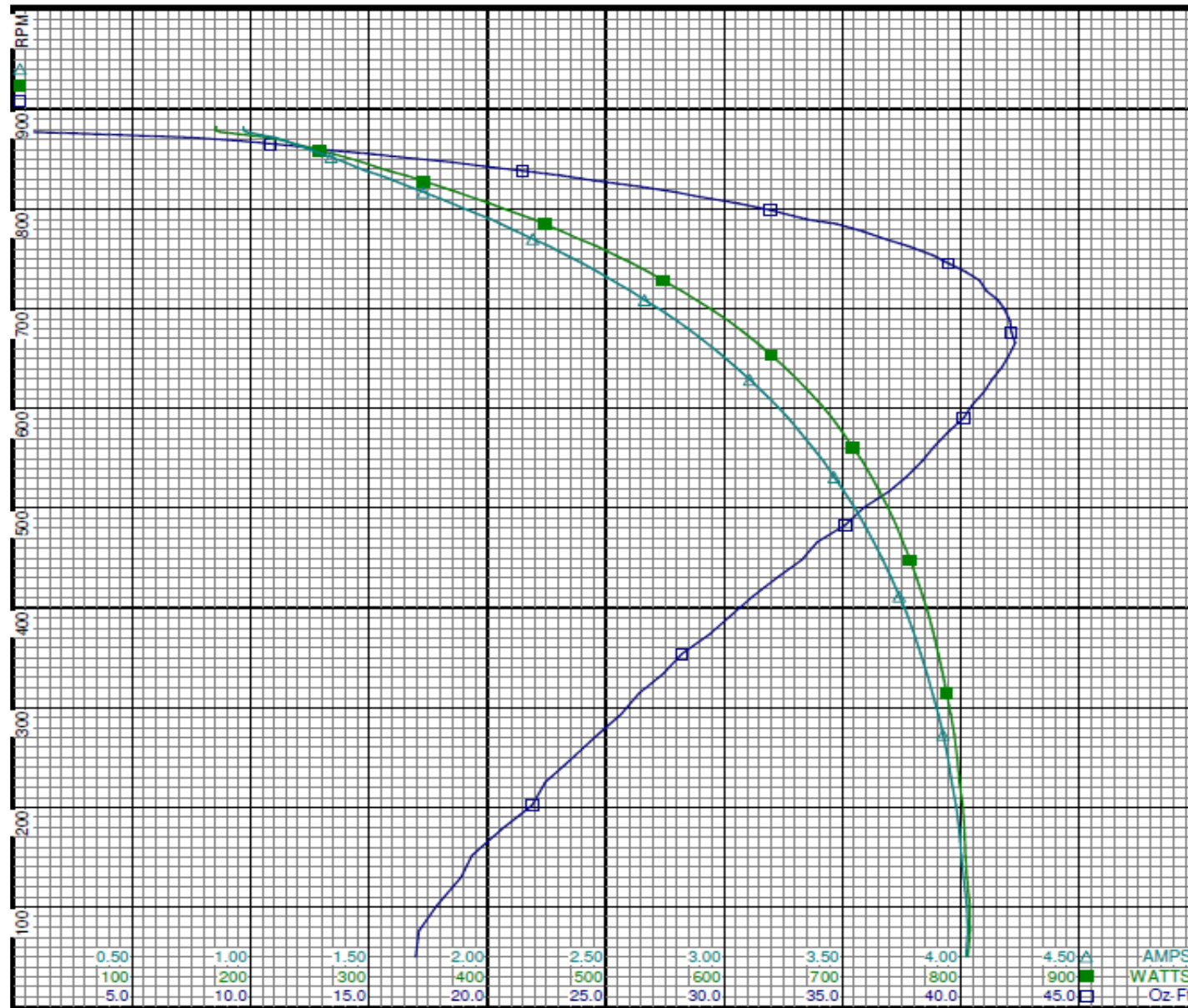
Dayton Electric Mfg. Co. Lake Forest, IL 60045 USA

Performance Data



5RHU1BG

REV.
0



Dayton

Curve Descriptions:
 Motor(1) Test 16 Run 230V 60 Hz 8P
 M4 CCW 10ufd Run
 □ SPEED vs TORQUE
 ■ SPEED vs WATTS
 △ SPEED vs ILine

Motor Ratings:
 (1) K055JIT2453 5RHU1BG

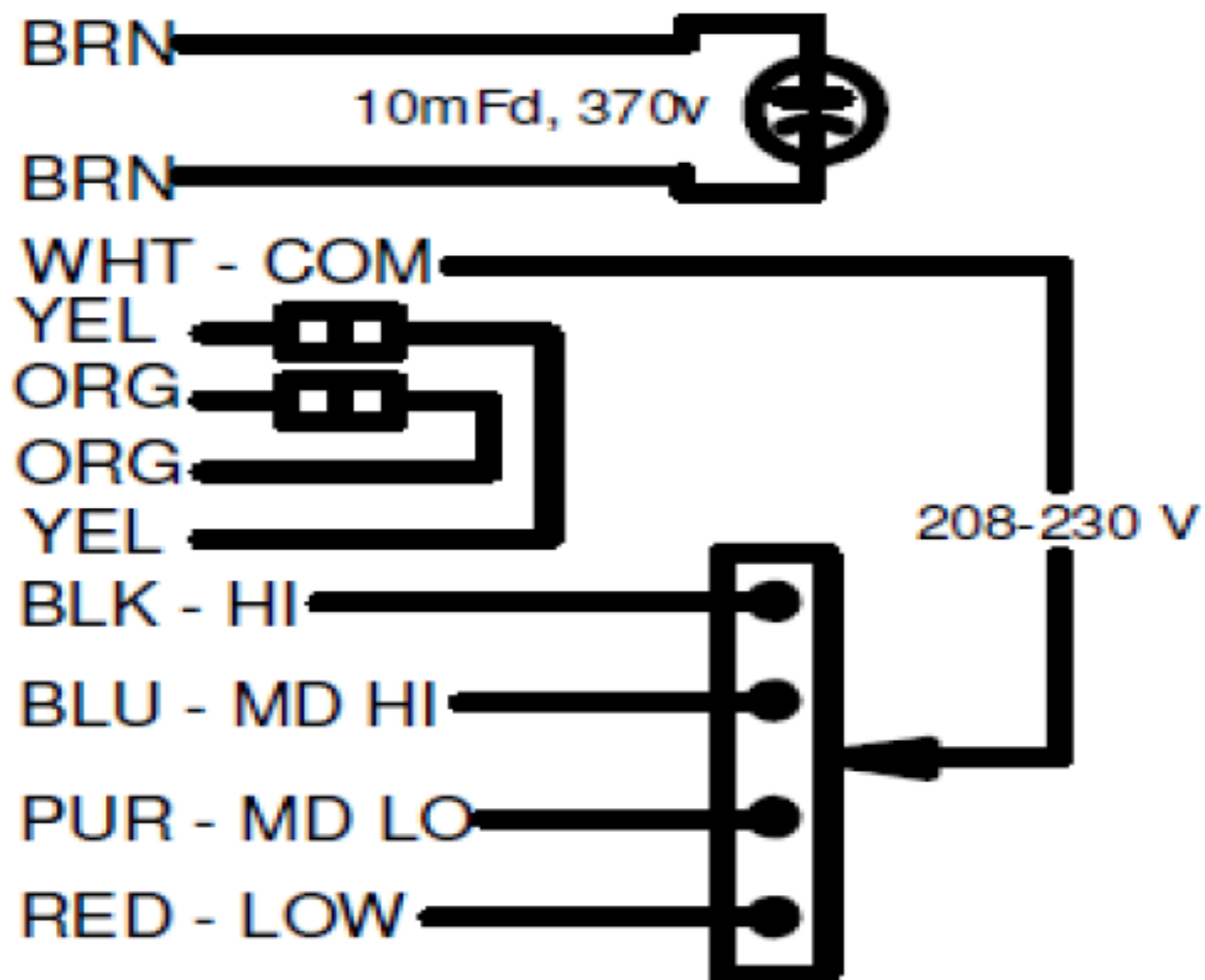
DRAWING NO. PAGE 32 of 32 REV.
 5RHU1BG 0

Dayton Electric Mfg. Co. Lake Forest, IL 60045 USA

Wiring Diagram



5RHU1BG	REV. -
---------	-----------



**CCW LEAD END ROTATION
TO REVERSE SWITCH
YEL AND ORG LEADS**

DRAWING NO.	PAGE 1 of 1	REV.
5RHU1BG		-

Dayton[®]**DIRECT DRIVE BLOWER MOTOR**

HP: SEE TABLE VOLTS: 208-230 HZ: 60 PH: 1 SF: 1.0

RPM: 825/4 SPD INS CL: B AMPS: 3.9-1.4 SFA: 3.9-1.4

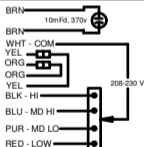
ENCL: OAO DUTY: CONT AMB: 60 °C KVA CODE: A

FR: 48YZ MFG. NO. PROT. CODE: 7A010 AVG. F.L. EFF.

MTR REF: K55HXJJT-2453 THERMALLY PROTECTED: AUTO

ROTATION: CCW Lead End Rev CAPACITOR: See Table Below

Part No: 5RHU1BG

CCW LEAD END ROTATION
TO REVERSE SWITCH
YEL AND ORG LEADS

258501

MOTOR	CAP MFD/370V		COOL	HEAT	FLA
	208V	230V			
1/2 HP	10	10	HI	MED- LOW	3.9/3.9
1/3 HP	10	10	MED- HI	MED- LOW	2.6/2.6
1/4 HP	10	10	MED- LOW	LOW	1.8/1.8
1/5 HP	10	10	LOW	LOW	1.4/1.4

Mfd for Dayton Electric Mfg. Co., Lake Forest, IL 60045 USA

Made in Mexico