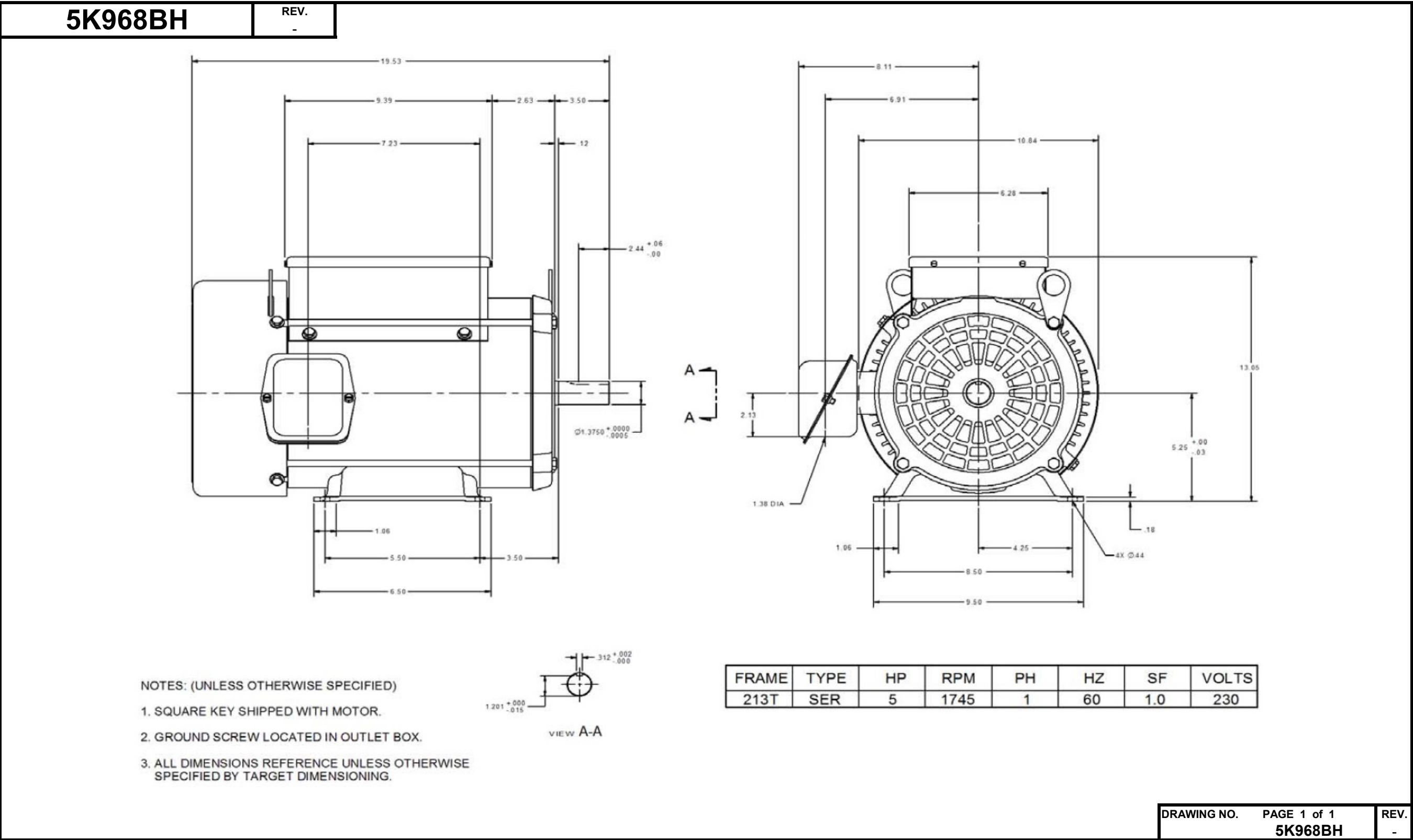


Dimensional Drawing



Dayton Electric Mfg. Co. Lake Forest, IL 60045 USA

Performance Data

**5K968BH**REV.
-

MOTOR PERFORMANCE

MODEL NO.	SKU NO.	PHASE	TYPE	FRAME
5K968BH	5K968BH	1	SER	213T

ORDER NO.	NA	LINE NO.
-----------	----	----------

HP:	5
POLES:	4
HZ:	60
SERVICE FACTOR:	1.00
DUTY CYCLE:	CONTINUOUS
ALTITUDE (FASL) FT:	3300
MAX AMBIENT:	40 °C
ENCLOSURE:	TEFC
INSULATION CLASS:	F
VOLTS:	230
EFFICIENCY (%):	
S.F.	-
FULL	83.7
3/4	83.1
1/2	79.7
1/4	68.9
POWER FACTOR (%):	
S.F.	-
FULL	91.3
3/4	89.3
1/2	84.6
1/4	72.8
AMPS:	
S.F.	-
FULL	23.0
3/4	16.5
1/2	12.2
1/4	8.4
NO LOAD	5.6
LOCKED ROTOR AMPS:	134
NEMA CODE LETTER	G
NEMA DESIGN LETTER	L
FULL LOAD RPM	1745
THERMAL PROTECTION	-
TORQUES:	
BREAKDOWN{LB-FT}	36.9
LOCKED ROTOR{LB-FT}	34.9
PULL UP{LB-FT}	33.0
FULL LOAD{LB-FT}	14.6

NEMA Nominal and Guaranteed Efficiencies are up to 3,300 feet above sea level and 25 °C ambient

The Above Data Is Typical, Sinewave Power Unless Noted Otherwise

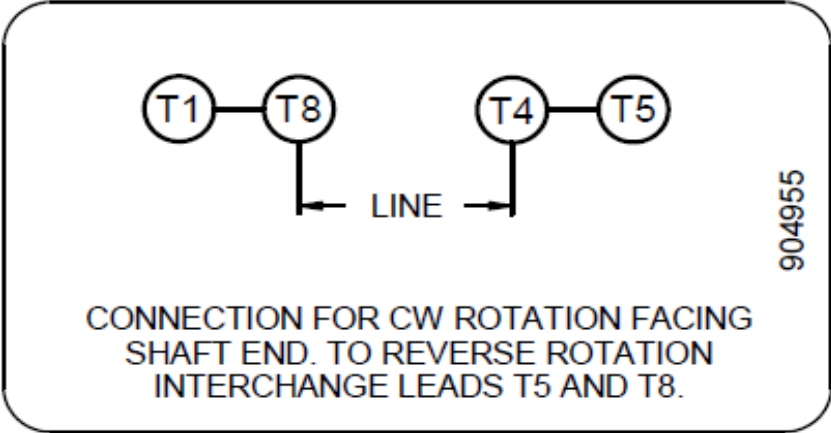
DRAWING NO.	PAGE 1 of 1	REV.
	5K968BH	-

Dayton Electric Mfg. Co. Lake Forest, IL 60045 USA



5K968BE	REV. -
---------	-----------

Motor Wiring Diagram
4 Lead, Single Phase, Single Voltage, CW Rotation



Connected for CW Rotation Facing Shaft End.
To reverse direction of rotation, interchange leads T5 & T8.

Each lead may have one or more cables comprising that lead.
In such case, cable will be marked with the appropriate lead number.

DRAWING NO.	PAGE 1 of 1	REV.
5K968BE		-

Dayton[®]Part
No.**5K968BH****INDUSTRIAL
MOTOR**SHAFT
END BRG **6208-2Z-J/C3**OPP
END BRG **6205-2Z-J/C3****FR 213T****TYPE SER****ENCL TEFC****PH 1** MAX
AMB **40 °C** **ID#**INSUL
CLASS **F****DUTY CONT** **WT 121 LB** **BAL****HP 5****RPM 1745****SF 1.0****HZ 60****VOLTS 230**MAX
KVARNEMA NOM
EFFICIENCY **83.7****AMPS 23.0****CODE G****DES L****SF AMPS****PF 91.3**GUARANTEED
EFFICIENCY**2041394-004** **MADE IN MEXICO OF IMPORTED AND DOMESTIC COMPONENTS****Mfd. for Dayton Electric Mfg. Co.
Lake Forest, IL 60045 USA**