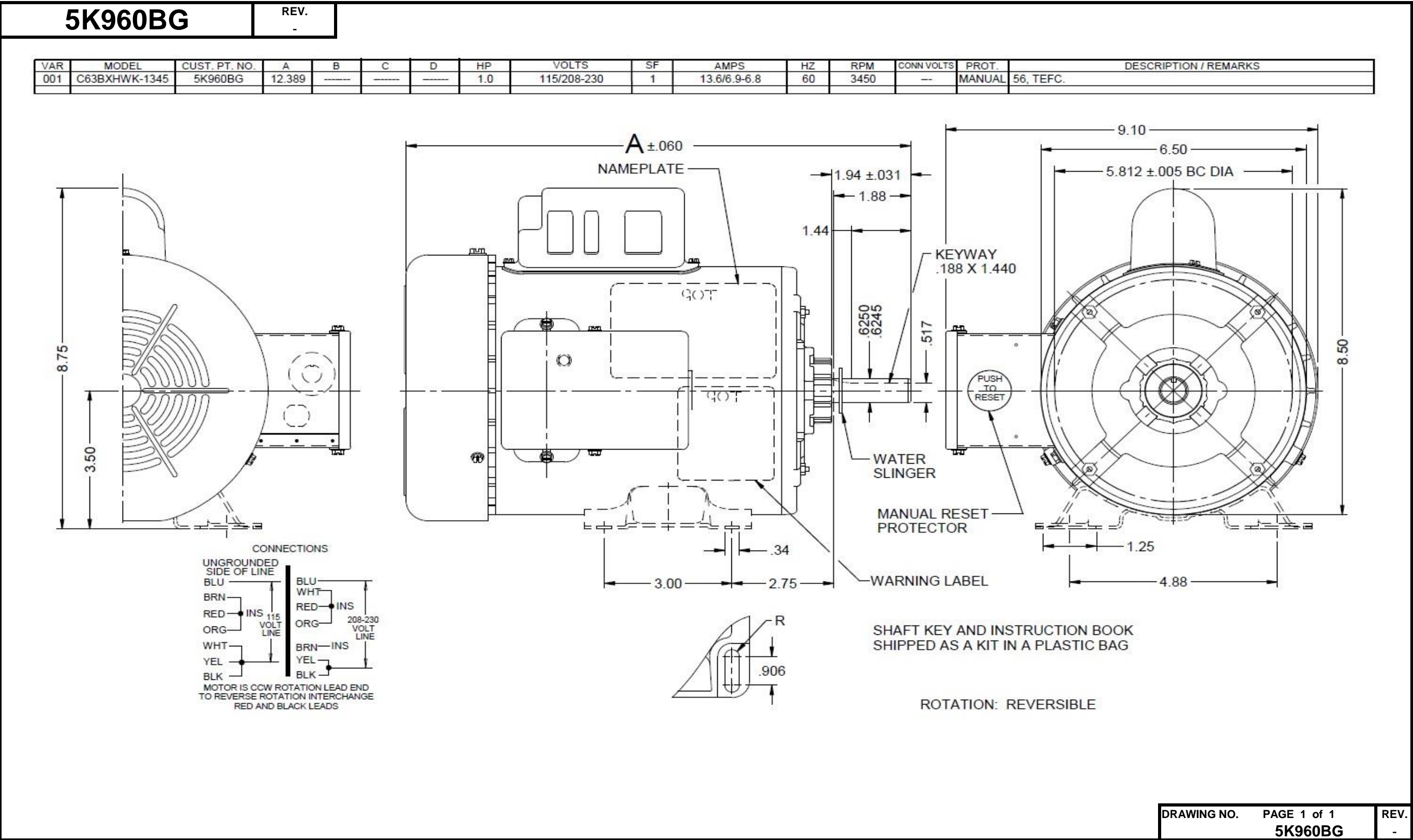


Dimensional Drawing



Performance Data



5K960BG

REV.
-

MOTOR PERFORMANCE

HP:	1						
Poles:	2						
No. of Speeds:	1						
Volts:	115/208-230	115	208	230			
HZ:	60	60	60	60			
Service Factor:	1						
Efficiency:	@ Rated Load	66.9	68.7	69.2			
Power Factor:	@ Rated Load	79.0	83.4	77.3			
Amps:	@ No Load						
	@ Rated Load	12.4	6.3	6.1			
	@ Service Factor	12.4	6.3	6.1			
	@ Locked Rotor	70	30	34			
RPM:	@ Rated Load	3493	3473	3497			
Ambient (°C):	40						
Altitude (FASL):							
Torques:	Breakdown	63.9	52.9	65.7			
	Locked Rotor	65	47	58			
	Pull-Up	55.8	41.4	50367			
	Rated Load	24.1	24.2	24			
	Service Factor	24.1	24.2	24			
Watts:	Rated Load	1119	1086	1081			
KVA Code:	K	K	G	J			
Temperature Rise:	@ Rated Load	64.7	60.6	59.5			
	@ Service Factor	64.7	60.6	59.5			
Thermal Protector:	Trip Temp (°C)	130.5	143	147.2			
Winding Material:	Start (Auxiliary)	Cu	Cu	Cu			
	Run (Main)	Al	Al	Al			
Capacitor(s):	Start (MFD / Volts)	519 mFd, 110V					
	No. of Start Capacitors						
	Run (MFD / Volts)						
	No. of Run Capacitors						

LOW SPEED PERFORMANCE DATA:

HP:							
Poles:							
Volts:							
HZ:							
Efficiency:	@ Rated Load						
Power Factor:	@ Rated Load						
Amps:	@ No Load						
	@ Rated Load						
	@ Service Factor						
	@ Locked Rotor						
Torques:	Bead Down						
	Locked Rotor						
	Pull-Up						
	Rated Load						
	Service Factor						
Watts:	@ Rated Load						
Temperature Rise:	@ Rated Load						
	@ Service Factor						

DRAWING NO. PAGE 1 of 1
5K960BG

REV.
-

Dayton Electric Mfg. Co. Lake Forest, IL 60045 USA

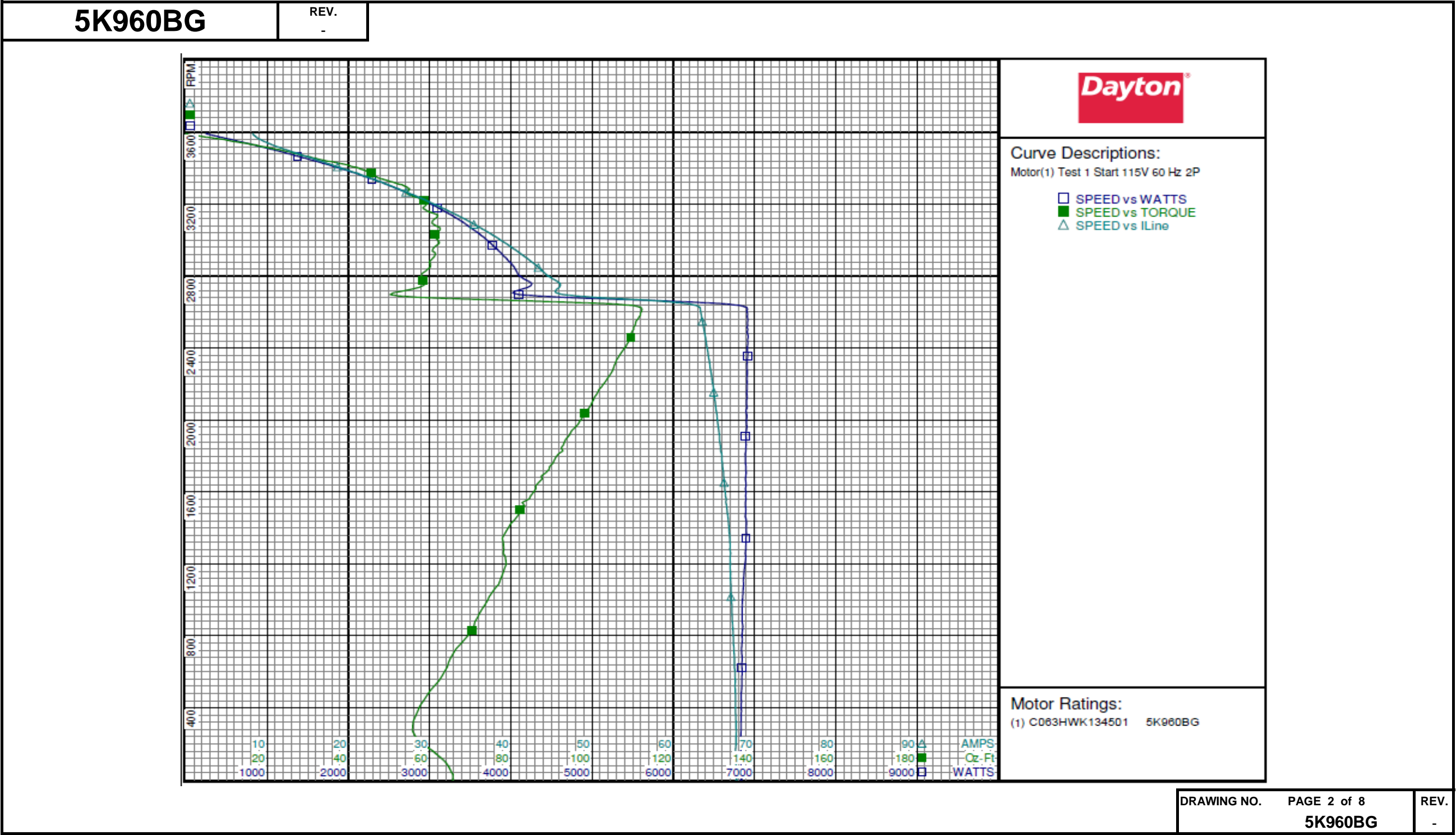
Performance Data



5K960BG			REV. -							
Dayton Manufacturing Company										
Motor Description				Test Conditions						
Model:	C063HWK134501 5K960BG		Test Type:	Start			Run Cap:	0		
Motor ID:	No.1 Of 3		Test Number:	1			Start Cap:	519 MFD 110V		
Poles:	2		Poles:	2			Environment:			
Volts:	115/208-230		Volts:	115			Tested:	2/24/2005 10:32:44 PM		
Frequency:	60		Hz:	60			Tested By:	Sharp, Gerald		
HP:	1		Rotation:				Gear Ratio:	1:1		
Speed:	3450		Special Cond:				Bearing Friction:	-0.31 Oz-Ft		
Phase:	1		Speed Conn:				Windage Torque:	-3.24 Oz-Ft		
Protector:	CEJ49CA		TestBoard:	Amps Performance Fixture #1						
Special Points	Vline (V)	Vaux (V)	Vcap (V)	Iline (A)	Watts	RPM	Tq (Oz-ft)	HP	Eff (%)	PF (%)
	115.0	3.3	120.4	67.79	6844	1	65.90	0.001	0.0	87.8
	115.0	3.0	119.4	67.71	6830	72	64.67	0.056	0.6	87.7
PUT OZ-FT	115.0	3.1	117.5	67.73	6832	271	55.77	0.180	2.0	87.7
	115.0	3.2	116.7	67.67	6835	352	56.49	0.237	2.6	87.8
	115.0	3.0	114.0	67.52	6843	626	64.34	0.480	5.2	88.1
	115.0	3.0	111.7	67.26	6846	877	71.15	0.742	8.1	88.5
	115.0	3.0	110.1	67.04	6860	1109	77.36	1.021	11.1	89.0
	115.0	3.1	109.4	66.96	6895	1322	78.11	1.230	13.3	89.6
	115.0	3.1	106.5	66.55	6887	1521	83.42	1.511	16.4	90.0
	115.0	3.5	104.4	66.18	6898	1707	88.61	1.800	19.5	90.6
	115.0	3.0	102.0	65.71	6892	1878	93.17	2.083	22.5	91.2
	115.0	3.0	100.4	65.33	6899	2037	98.19	2.381	25.7	91.8
	115.0	3.0	99.0	64.90	6908	2183	102.33	2.660	28.7	92.6
	115.0	3.0	97.9	64.45	6910	2320	105.82	2.922	31.5	93.2
	115.0	3.3	97.6	63.99	6912	2446	109.26	3.181	34.3	93.9
	115.0	3.1	97.2	63.48	6914	2561	111.29	3.393	36.6	94.7
	115.0	3.2	104.8	57.23	5753	2664	81.02	2.570	33.3	87.4
	115.0	3.1	109.8	46.06	4259	2757	58.97	1.936	33.9	80.4
	115.0	3.1	109.0	43.40	4042	2848	60.09	2.037	37.6	81.0
	115.0	3.3	108.3	40.95	3868	2933	61.12	2.134	41.2	82.1
	115.0	3.1	107.6	38.40	3678	3010	61.51	2.204	44.7	83.3
	115.0	3.2	106.4	35.71	3465	3081	61.42	2.253	48.5	84.4
	115.0	3.1	106.1	33.03	3238	3145	61.39	2.299	53.0	85.2
	115.0	3.2	105.0	30.30	2996	3204	59.45	2.268	56.5	86.0
	115.0	3.1	104.1	27.60	2743	3257	54.42	2.110	57.4	86.4
	115.0	3.2	103.2	24.93	2485	3307	53.31	2.098	63.0	86.7
	115.0	3.2	102.8	22.25	2211	3351	46.85	1.869	63.1	86.4
	115.0	3.1	102.4	19.54	1922	3394	43.08	1.741	67.6	85.5
	115.0	3.1	101.4	16.80	1619	3436	35.85	1.466	67.6	83.8
	115.0	3.1	100.3	14.14	1308	3475	28.04	1.160	66.1	80.5
	115.0	3.2	100.1	11.57	974	3513	20.30	0.849	65.0	73.2
	115.0	3.2	99.2	9.54	636	3550	11.22	0.474	55.6	58.0
	115.0	3.4	98.2	8.28	283	3587	0.52	0.022	5.9	29.7
	115.0	3.2	98.0	8.20	245	3591	0.00	0.000	0.0	26.0
							DRAWING NO.	PAGE 1 of 8		REV.
							5K960BG		-	

Dayton Electric Mfg. Co. Lake Forest, IL 60045 USA

Performance Data



Dayton Electric Mfg. Co. Lake Forest, IL 60045 USA

Performance Data



5K960BG

REV.
-

Dayton Manufacturing Company

Motor Description

Model: C063HWK134501 5K960BG
Motor ID: No.1 Of 3
Poles: 2
Volts: 115/208-230
Frequency: 60
HP: 1
Speed: 3450
Phase: 1
Protector: CEJ49CA

Test Conditions

Test Type: Run
Test Number: 2
Poles: 2
Volts: 115
Hz: 60
Rotation:
Special Cond:
Speed Conn:
TestBoard: Aamps Performance Fixture #1
Run Cap: 0
Start Cap: 519 MFD 110V
Environment:
Tested: 2/24/2005 10:37:27 PM
Tested By: Sharp, Gerald
Gear Ratio: 1:1
Bearing Friction: -0.34 Oz-Ft
Windage Torque: -3.32 Oz-Ft

Special Points	Vline(V)	Iline(A)	Watts	RPM	Tq(Oz-ft)	HP	Eff (%)	PF (%)
	115.0	7.75	232	3582	0.00	0.000	0.0	26.1
6.09 OZ-FT	115.0	8.29	458	3559	6.09	0.258	42.0	47.9
	115.0	9.19	650	3541	11.48	0.484	55.5	61.5
12.17 OZ-FT	115.0	9.31	673	3539	12.17	0.513	56.8	62.8
18.26 OZ-FT	115.0	10.67	890	3517	18.26	0.764	64.1	72.5
	115.0	11.70	1033	3502	21.85	0.911	65.8	76.8
1 HP	115.0	12.35	1119	3493	24.05	1.000	66.7	78.7
24.35 OZ-FT	115.0	12.42	1128	3492	24.35	1.012	66.9	79.0
28 OZ-FT	115.0	13.60	1276	3475	28.00	1.158	67.7	81.6
30.43 OZ-FT	115.0	14.38	1372	3464	30.43	1.255	68.2	83.0
	115.0	14.54	1392	3462	31.18	1.285	68.9	83.2
3450 RPM	115.0	15.42	1494	3450	33.83	1.389	69.4	84.2
	115.0	17.56	1739	3420	39.99	1.628	69.9	86.1
	115.0	20.65	2073	3375	45.88	1.843	66.3	87.3
	115.0	23.39	2362	3332	50.22	1.992	62.9	87.8
	115.0	26.36	2655	3283	56.40	2.204	61.9	87.6
	115.0	29.28	2933	3231	58.38	2.245	57.1	87.1
	115.0	32.14	3189	3172	61.14	2.309	54.0	86.3
	115.0	34.87	3422	3111	63.74	2.361	51.5	85.3
	115.0	37.55	3637	3042	63.56	2.302	47.2	84.2
BDT OZ-FT	115.0	37.78	3656	3037	63.91	2.310	47.1	84.2
	115.0	40.16	3837	2967	62.74	2.216	43.1	83.1
	115.0	42.56	4008	2890	61.75	2.124	39.5	81.9
	115.0	44.81	4156	2803	59.62	1.990	35.7	80.7
	115.0	46.94	4283	2713	56.53	1.825	31.8	79.3
	115.0	48.89	4393	2609	53.50	1.662	28.2	78.1
	115.0	50.78	4492	2500	49.95	1.487	24.7	76.9
	115.0	52.45	4571	2380	45.79	1.297	21.2	75.8
	115.0	54.02	4626	2250	41.26	1.105	17.8	74.5
	115.0	55.48	4680	2108	36.78	0.923	14.7	73.3
	115.0	56.71	4718	1958	32.14	0.749	11.8	72.3
	115.0	57.88	4752	1795	27.29	0.583	9.2	71.4
	115.0	59.07	4786	1621	22.54	0.435	6.8	70.5
PUT OZ-FT	115.0	11.86	1055	3500	22.47	0.936	66.2	77.3
	115.0	67.01	7070	1438	86.17	1.476	15.6	91.8
	115.0	66.96	6949	1235	78.54	1.154	12.4	90.2
	115.0	66.95	6905	1030	77.53	0.950	10.3	89.7
	115.0	67.15	6890	795	70.11	0.663	7.2	89.2
	115.0	67.32	6884	549	63.55	0.416	4.5	88.9
	115.0	67.38	6879	288	57.09	0.196	2.1	88.8

DRAWING NO.	PAGE 3 of 8	REV.
	5K960BG	-

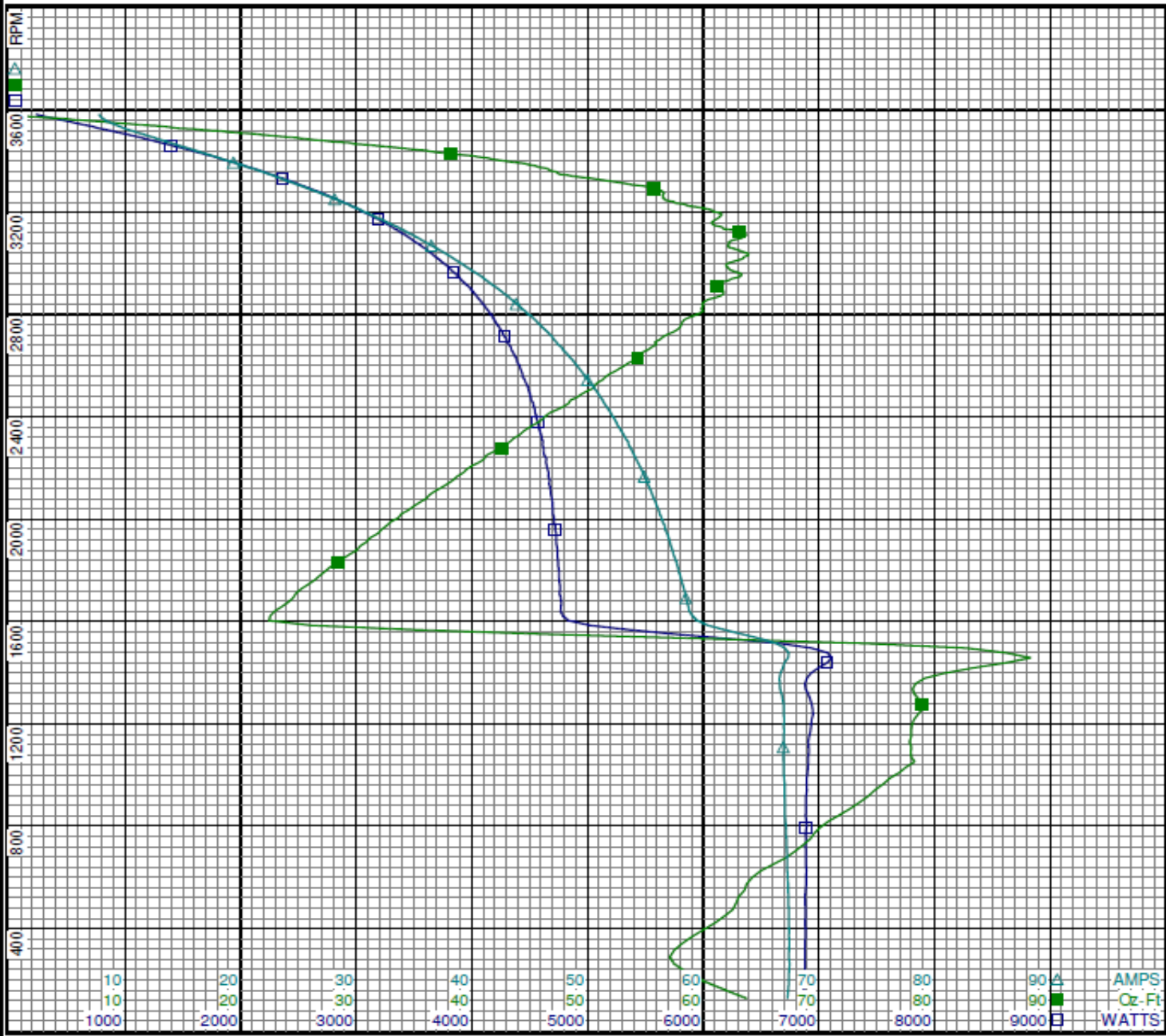
Dayton Electric Mfg. Co. Lake Forest, IL 60045 USA

Performance Data



5K960BG

REV.
-



Curve Descriptions:
Motor(1) Test 2 Run 115V 60 Hz 2P

- SPEED vs WATTS
- SPEED vs TORQUE
- △ SPEED vs ILine

Motor Ratings:
(1) C063HWK134501 5K960BG

DRAWING NO.	PAGE 4 of 8	REV.
	5K960BG	-

Dayton Electric Mfg. Co. Lake Forest, IL 60045 USA

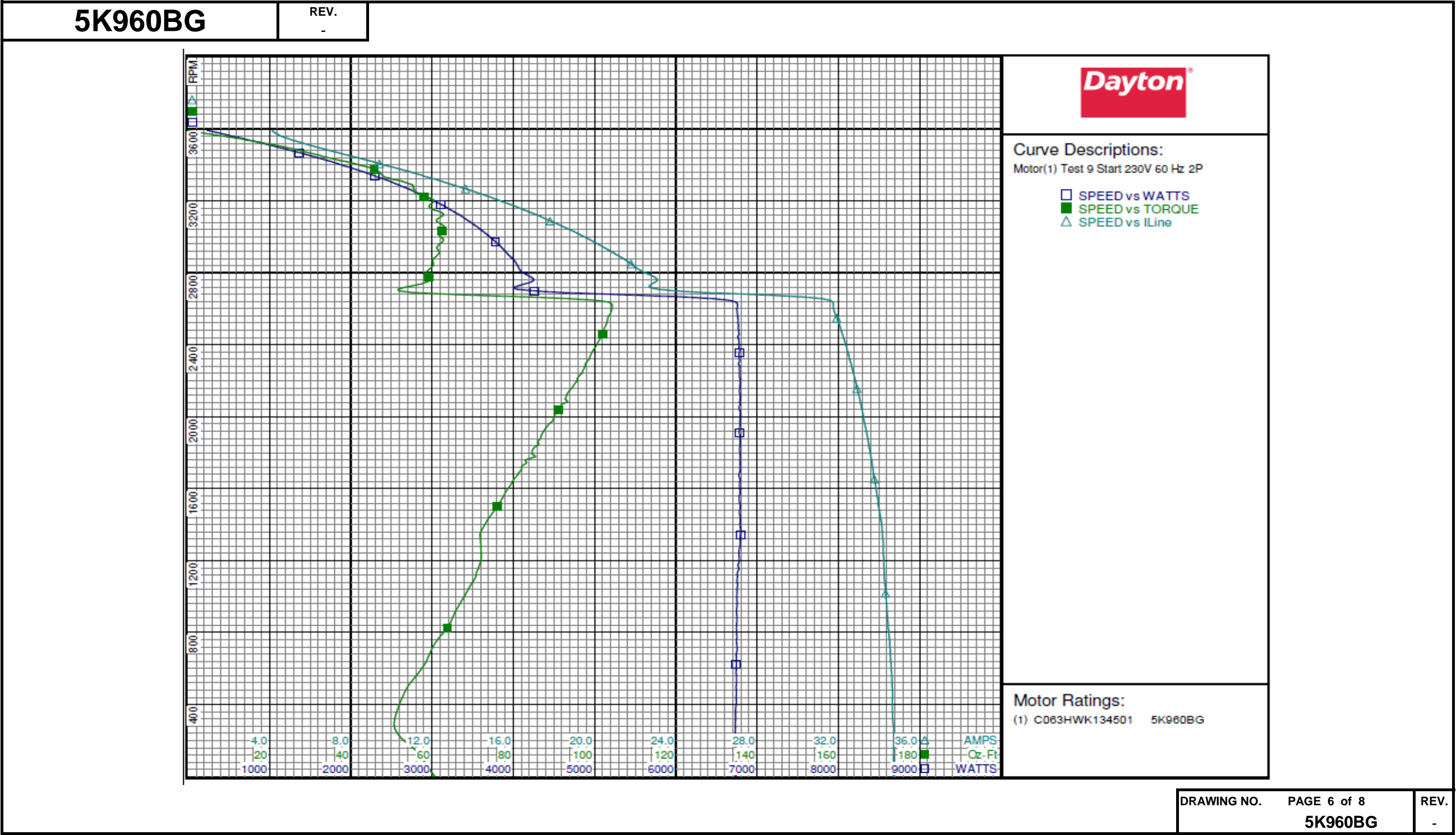
Performance Data



5K960BG		REV. -								
Dayton Manufacturing Company										
Motor Description					Test Conditions					
Model:		C063HWK134501 5K960BG		Test Type:		Start		Run Cap:		0
Motor ID:		No.1 Of 3		Test Number:		9		Start Cap:		519 MFD 110V
Poles:		2		Poles:		2		Environment:		
Volts:		115/208-230		Volts:		230		Tested:		2/24/2005 9:22:29 PM
Frequency:		60		Hz:		60		Tested By:		Sharp, Gerald
HP:		1		Rotation:				Gear Ratio:		1:1
Speed:		3450		Special Cond:				Bearing Friction:		-0.32 Oz-Ft
Phase:		1		Speed Conn:				Windage Torque:		-3.33 Oz-Ft
Protector:		CEJ49CA		TestBoard:		Amps Performance		Fixture #1		
Special Points		Vline (V)	Vaux(V)	Vcap(V)	Iline (A)	Watts	RPM	Tq(Oz-ft)	HP	Eff (%)
		230.0	8.4	108.3	34.71	6740	0	60.44	0.000	0.0
		230.0	8.5	107.9	34.71	6738	71	58.48	0.050	0.5
PUT OZ-FT		230.0	8.6	105.8	34.69	6731	298	50.67	0.180	2.0
		230.0	8.5	105.2	34.65	6733	353	51.20	0.215	2.4
		230.0	8.5	103.0	34.58	6743	626	58.30	0.435	4.8
		230.0	8.5	100.9	34.42	6750	875	64.87	0.676	7.5
		230.0	8.4	99.4	34.25	6757	1108	70.71	0.933	10.3
		230.0	8.4	98.7	34.18	6791	1322	71.91	1.132	12.4
		230.0	8.5	96.0	33.95	6783	1521	76.66	1.389	15.3
		230.0	8.5	93.9	33.70	6789	1707	82.02	1.666	18.3
		230.0	8.5	92.2	33.44	6787	1878	86.69	1.938	21.3
		230.0	8.4	90.8	33.16	6785	2037	91.04	2.208	24.3
		230.0	8.5	89.6	32.86	6790	2183	95.13	2.473	27.2
		230.0	8.3	88.7	32.53	6780	2320	98.67	2.725	30.0
		230.0	8.3	88.5	32.23	6762	2447	101.68	2.962	32.7
		230.0	8.4	88.3	31.88	6761	2560	103.48	3.154	34.8
		230.0	8.4	91.2	30.25	6081	2665	83.39	2.645	32.5
		230.0	8.4	94.3	23.08	4251	2756	59.53	1.953	34.3
		230.0	8.3	93.6	21.80	4040	2849	60.33	2.046	37.8
		230.0	8.3	93.0	20.58	3871	2932	61.26	2.138	41.2
		230.0	8.3	92.5	19.31	3681	3010	61.72	2.212	44.8
		230.0	8.1	92.0	17.94	3467	3082	61.23	2.247	48.3
		230.0	8.4	92.2	16.62	3244	3145	61.12	2.288	52.6
		230.0	8.2	91.7	15.29	3009	3202	60.46	2.305	57.1
		230.0	8.3	91.5	13.94	2760	3256	55.46	2.150	58.1
		230.0	8.2	91.0	12.53	2492	3306	52.93	2.083	62.4
		230.0	8.3	90.9	11.18	2213	3352	47.29	1.887	63.6
		230.0	8.3	90.8	9.78	1915	3394	42.89	1.733	67.5
		230.0	8.3	90.5	8.44	1613	3436	34.93	1.429	66.1
		230.0	8.4	90.4	7.11	1304	3474	28.04	1.160	66.3
		230.0	8.3	90.1	5.89	982	3512	20.58	0.860	65.4
		230.0	8.3	90.0	4.78	627	3550	11.03	0.466	55.5
		230.0	8.3	89.8	4.15	270	3587	0.11	0.005	1.4
		230.0	8.3	89.8	4.13	234	3592	0.00	0.000	0.0
DRAWING NO. PAGE 5 of 8										
5K960BG										
REV.										

Dayton Electric Mfg. Co. Lake Forest, IL 60045 USA

Performance Data



Performance Data



5K960BG		REV. -						
Dayton Manufacturing Company								
Motor Description				Test Conditions				
Model:	C063HWK134501	5K960BG	Test Type:	Run	Run Cap:	0		
Motor ID:	No.1 Of 3		Test Number:	10	Start Cap:	519 MFD 110V		
Poles:	2		Poles:	2	Environment:			
Volts:	115/208-230		Volts:	230	Tested:	2/24/2005 8:58:53 PM		
Frequency:	60		Hz:	60	Tested By:	Sharp, Gerald		
HP:	1		Rotation:		Gear Ratio:	1:1		
Speed:	3450		Special Cond:		Bearing Friction:	-0.29 Oz-Ft		
Phase:	1		Speed Conn:		Windage Torque:	-3.31 Oz-Ft		
Protector:	CEJ49CA		TestBoard:	Amps Performance	Fixture #1			
Special Points	Vline (V)	Iline (A)	Watts	RPM	Tq (Oz-ft)	HP	Eff (%)	PF (%)
	230.0	3.92	239	3578	0.00	0.000	0.0	26.5
6.09 OZ-FT	230.0	4.18	450	3558	6.09	0.258	42.7	46.7
12.17 OZ-FT	230.0	4.65	650	3541	12.17	0.513	58.9	60.7
	230.0	4.73	675	3538	12.91	0.544	60.1	62.1
18.26 OZ-FT	230.0	5.33	869	3519	18.26	0.765	65.7	70.9
1 HP	230.0	6.10	1081	3497	24.02	1.000	69.0	77.1
	230.0	6.10	1082	3497	24.04	1.001	69.0	77.1
24.35 OZ-FT	230.0	6.14	1092	3496	24.35	1.013	69.2	77.3
28 OZ-FT	230.0	6.68	1228	3482	28.00	1.161	70.5	79.9
30.43 OZ-FT	230.0	7.05	1321	3472	30.43	1.258	71.0	81.4
	230.0	7.64	1461	3456	33.28	1.369	69.9	83.2
3450 RPM	230.0	7.89	1518	3450	34.79	1.429	70.2	83.6
	230.0	9.15	1804	3416	40.48	1.646	68.1	85.7
	230.0	10.72	2141	3372	47.18	1.894	66.0	86.9
	230.0	12.18	2445	3327	54.04	2.141	65.3	87.3
	230.0	13.77	2754	3276	56.52	2.204	59.7	87.0
	230.0	15.19	3017	3226	61.86	2.375	58.7	86.4
	230.0	16.72	3287	3166	62.88	2.370	53.8	85.5
	230.0	18.15	3525	3102	63.69	2.352	49.8	84.5
BDT OZ-FT	230.0	19.02	3663	3059	65.67	2.391	48.7	83.7
	230.0	19.45	3729	3037	64.64	2.337	46.7	83.4
	230.0	20.73	3912	2964	64.13	2.263	43.1	82.1
	230.0	21.96	4079	2885	62.39	2.142	39.2	80.8
	230.0	23.13	4224	2797	59.98	1.997	35.3	79.4
	230.0	24.21	4350	2703	57.65	1.855	31.8	78.1
	230.0	25.21	4452	2600	53.81	1.665	27.9	76.8
	230.0	26.17	4539	2488	49.81	1.475	24.2	75.4
	230.0	27.01	4606	2367	45.85	1.292	20.9	74.1
	230.0	27.81	4658	2236	41.26	1.098	17.6	72.8
	230.0	28.49	4698	2094	36.48	0.910	14.4	71.7
	230.0	29.13	4738	1943	31.95	0.739	11.6	70.7
	230.0	29.68	4753	1778	26.79	0.567	8.9	69.6
PUT OZ-FT	230.0	5.80	999	3506	21.87	0.913	68.2	74.9
	230.0	30.16	4766	1603	21.87	0.417	6.5	68.7
	230.0	34.55	6963	1416	77.72	1.310	14.0	87.6
	230.0	34.39	6828	1214	71.06	1.027	11.2	86.3
	230.0	34.39	6783	1003	69.43	0.829	9.1	85.7
	230.0	34.51	6763	771	62.60	0.574	6.3	85.2
	230.0	34.61	6766	524	55.49	0.346	3.8	85.0
	230.0	34.62	6756	262	52.29	0.163	1.8	84.8

DRAWING NO.

PAGE 7 of 8

5K960BG

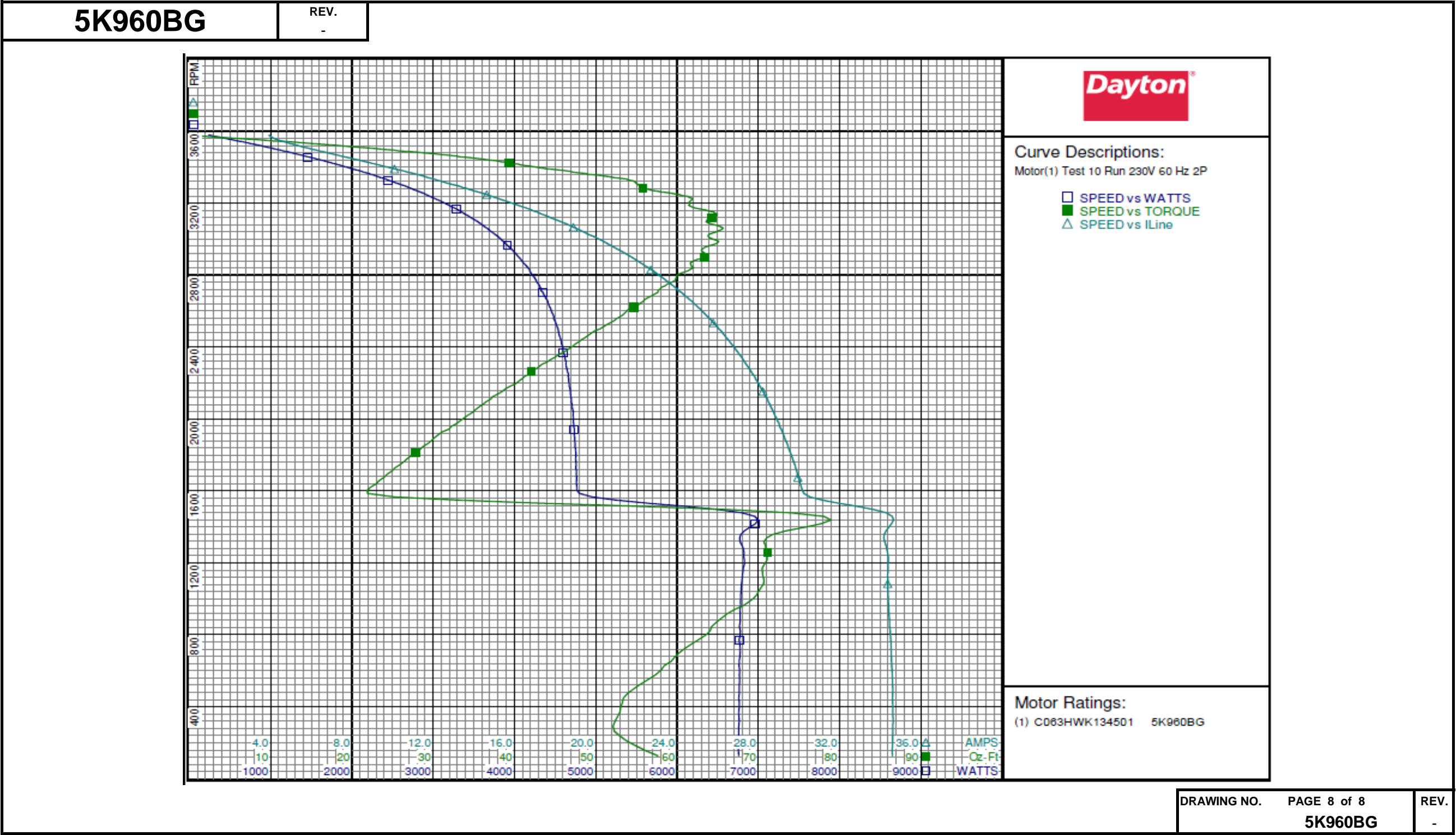
REV.

-

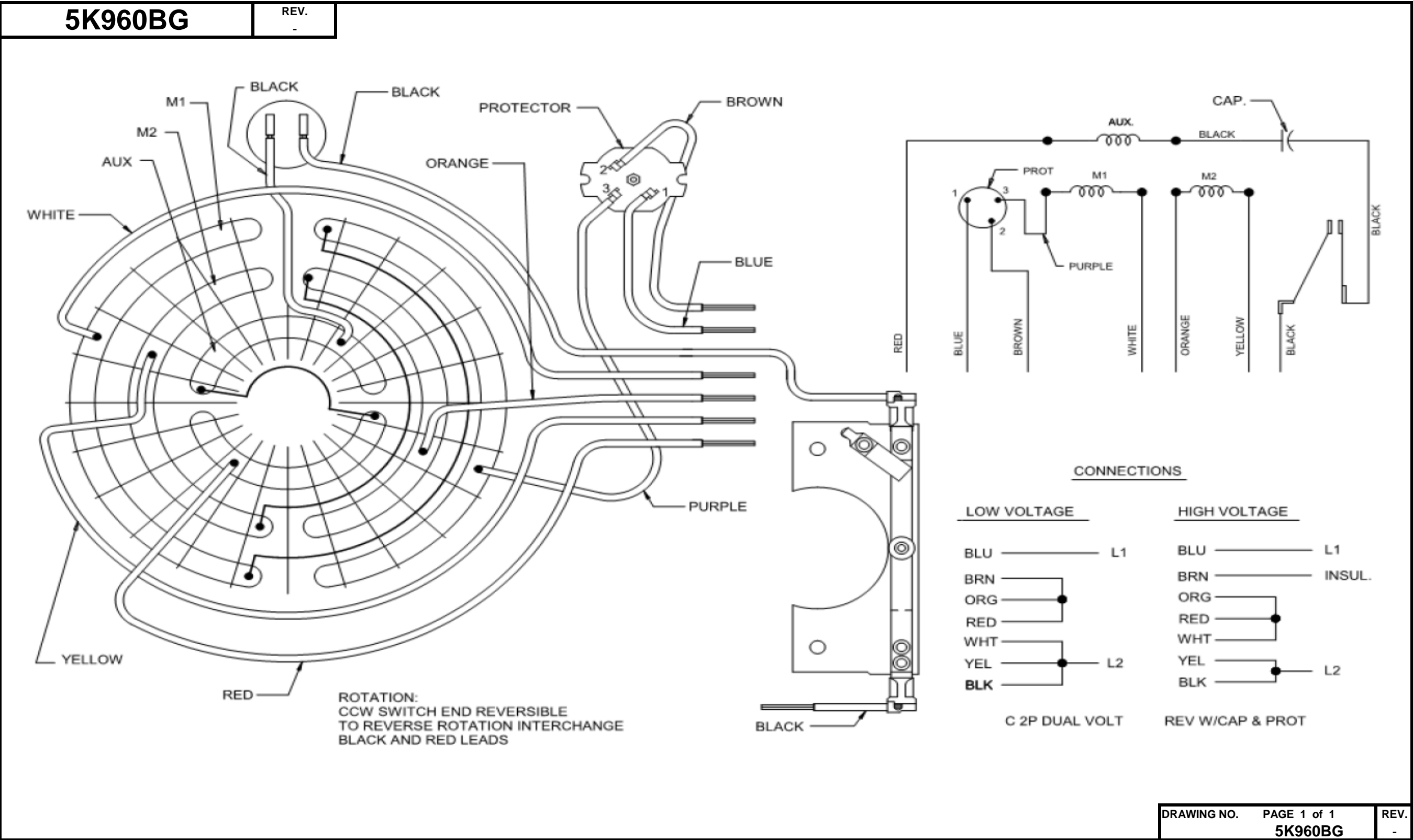
DRAWING NO.	PAGE 7 of 8	REV.
	5K960BG	-

Dayton Electric Mfg. Co. Lake Forest, IL 60045 USA

Performance Data



Wiring Diagram



Dayton®

CAP START GENERAL PURPOSE

HP: 1
VOLTS: 115/208-230



Part
No 5K960BG

AMPS: 13.6/6.9-6.8

RPM: 3450

DUTY: CONT

SF: 1

KVA CODE: J

ENCL: TEFC

THERMALLY PROTECTED: MANUAL

MFG. NO. PROT. CODE: 01430

AVG. F.L.
EFF.

MTR REF: C63BXHWK-1345

PH: 1

HZ: 60

FR: 56

INS CL: B

AMB: 40 °C

SFA:

**Disconnect Power Before Making Any
Electrical Connections or Changes**

CONNECTIONS

UNGROUND
SIDE OF LINE

BLU

BRN

RED

ORG

WHT

YEL

BLK

INS
115
VOLT
LINE

BLU

WHT

RED

ORG

WHT

YEL

BLK

INS

208-230
VOLT
LINE

INS

INS

MOTOR IS CCW ROTATION LEAD END
TO REVERSE ROTATION INTERCHANGE
RED AND BLACK LEADS



E37403



258501

Mfd for Dayton Electric Mfg. Co., Lake Forest, IL 60045 USA

Made in Mexico