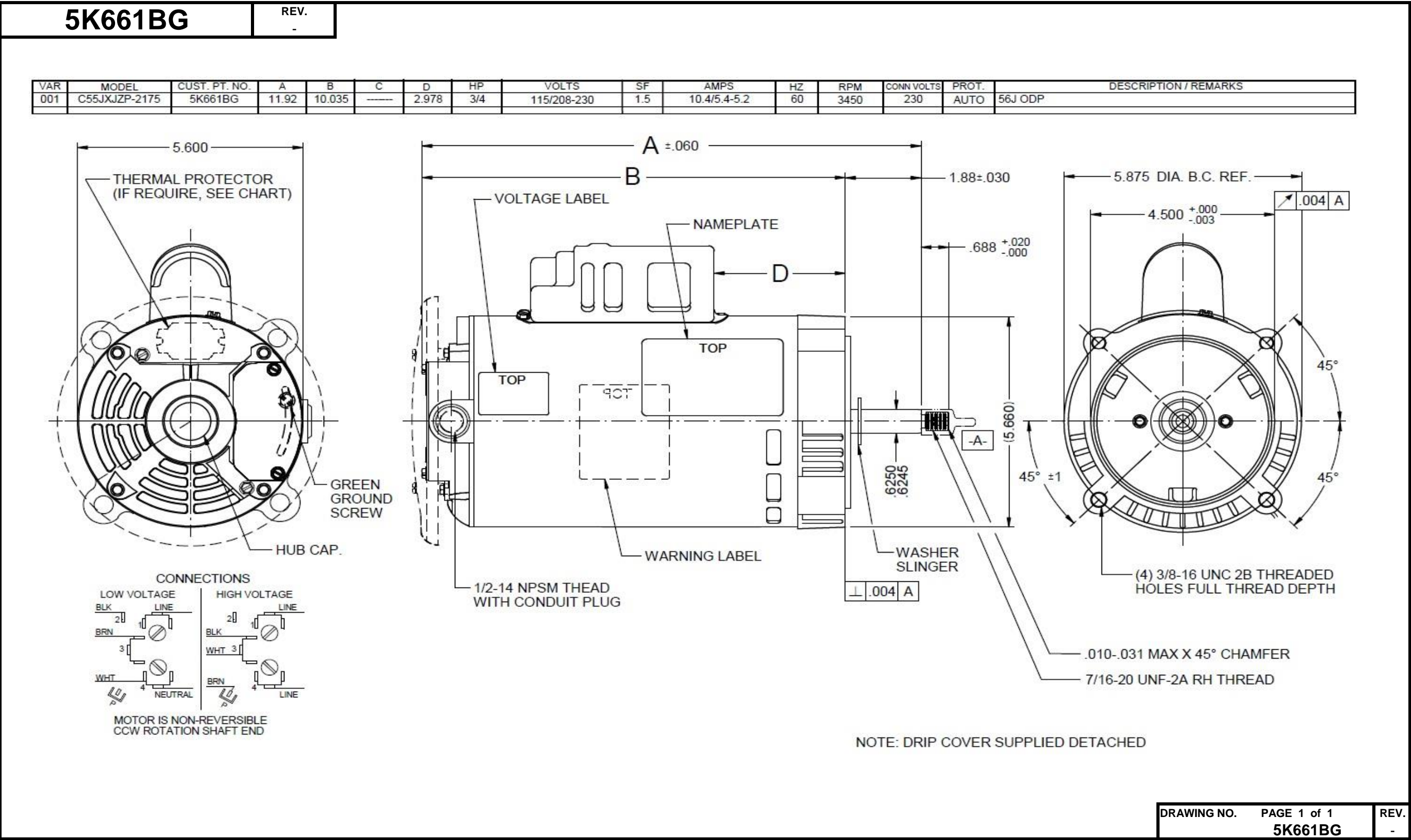


Dimensional Drawing



# Performance Data



**5K661BG**

REV.  
-

## MOTOR PERFORMANCE

<b>HP:</b>	3/4							
<b>Poles:</b>	2							
<b>No. of Speeds:</b>	1							
<b>Volts:</b>	115/208-230	115	208	230				
<b>HZ:</b>	60	60	60	60				
<b>Service Factor:</b>	1.5							
<b>Efficiency:</b>	@ Rated Load	67.0	67.2	67.4				
<b>Power Factor:</b>	@ Rated Load	79.5	84.4	79.4				
<b>Amps:</b>	@ No Load							
	@ Rated Load	9.3	4.8	4.7				
	@ Service Factor	12.48	6.87	6.23				
	@ Locked Rotor	59.9	27.7	31.2				
<b>RPM:</b>	@ Rated Load	3518	3501	3519				
<b>Ambient (°C):</b>	40							
<b>Altitude (FASL):</b>								
<b>Torques:</b>	Breakdown	54.1	42.8	54.5				
	Locked Rotor	36.9	29.7	39				
	Pull-Up	36.9	29.6	36.8				
	Rated Load	18.3	18.3	18.3				
	Service Factor	27.5	27.5	27.5				
<b>Watts:</b>	Rated Load	854	847	849				
<b>KVA Code:</b>	L	L	J	L				
<b>Temperature Rise:</b>	@ Rated Load	50.4	61.9	48.2				
	@ Service Factor	60.4	71.9	58.2				
<b>Thermal Protector:</b>	Trip Temp (°C)	133.3	155.8	150.4				
<b>Winding Material:</b>	Start (Auxiliary)	Cu	Cu	Cu				
	Run (Main)	Cu	Cu	Cu				
<b>Capacitor(s):</b>	Start (MFD / Volts)	XXX/XXXV						
	No. of Start Capacitors							
	Run (MFD / Volts)	XXX/XXXV						
	No. of Run Capacitors							

## LOW SPEED PERFORMANCE DATA:

<b>HP:</b>								
<b>Poles:</b>								
<b>Volts:</b>								
<b>HZ:</b>								
<b>Efficiency:</b>	@ Rated Load							
<b>Power Factor:</b>	@ Rated Load							
<b>Amps:</b>	@ No Load							
	@ Rated Load							
	@ Service Factor							
	@ Locked Rotor							
<b>Torques:</b>	Bead Down							
	Locked Rotor							
	Pull-Up							
	Rated Load							
	Service Factor							
<b>Watts:</b>	@ Rated Load							
<b>Temperature Rise:</b>	@ Rated Load							
	@ Service Factor							

DRAWING NO. PAGE 1 of 1 REV.  
5K661BG -

**Dayton Electric Mfg. Co. Lake Forest, IL 60045 USA**

# Performance Data



**5K661BG**

REV.  
-

## Dayton Manufacturing Company

### Motor Description

Model: C055JZP217501 5K661BG  
Motor ID: 1  
Poles: 2  
Volts: 115/208-230  
Frequency: 60  
HP: 3/4  
Speed: 3450  
Phase: 1  
Protector: AUTO

### Test Conditions

Test Type: Start  
Test Number: 1  
Poles: 2  
Volts: 115  
Hz: 60  
Rotation:  
Special Cond:  
Speed Conn:  
TestBoard: Amps Performance Fixture #3  
Run Cap: 0  
Start Cap: 198 MFD 110 VOLT  
Environment:  
Tested: 8/17/2010 2:52:04 PM  
Tested By: Sharp, Gerald  
Gear Ratio: 1:1  
Bearing Friction: -0.48 Oz-Ft  
Windage Torque: -2.97 Oz-Ft

Special Points	Vline (V)	Vaux (V)	Vcap (V)	Iline (A)	Imain (A)	Iaux (A)	Watts	RPM	Tq (Oz-ft)	HP	Eff (%)	PF (%)	Cap
PUT OZ-FT	115.0	82.6	126.0	59.89	59.28	9.205	5370	1	36.91	0.000	0.0	78.0	193.8
	115.0	82.6	126.0	59.89	59.28	9.205	5370	1	36.91	0.000	0.0	78.0	193.8
	115.0	83.2	125.5	59.83	59.14	9.173	5364	68	38.44	0.031	0.4	78.0	193.9
	115.0	85.6	122.2	59.57	58.60	8.915	5352	362	37.65	0.162	2.3	78.1	193.5
	115.0	88.8	119.2	59.27	57.97	8.679	5349	676	39.17	0.315	4.4	78.5	193.1
	115.0	91.8	116.5	58.86	57.19	8.469	5348	960	41.23	0.471	6.6	79.0	192.8
	115.0	95.6	113.8	58.39	56.32	8.237	5339	1214	44.70	0.646	9.0	79.5	192.0
	115.0	100.7	112.2	57.91	55.33	8.126	5362	1444	48.33	0.831	11.6	80.5	192.1
	115.0	104.9	110.4	57.27	54.23	7.981	5351	1653	51.55	1.014	14.1	81.2	191.7
	115.0	109.9	108.6	56.55	53.01	7.839	5348	1849	55.54	1.222	17.1	82.2	191.5
	115.0	115.4	107.3	55.78	51.72	7.744	5345	2023	59.33	1.428	19.9	83.3	191.5
	115.0	123.5	106.5	54.92	50.37	7.542	5319	2187	62.08	1.616	22.7	84.2	187.9
	115.0	154.1	109.1	50.28	50.20	-0.106	4313	2322	31.53	0.872	15.1	74.6	-2.6
	115.0	152.6	105.8	48.76	48.65	0.010	4248	2454	34.88	1.019	17.9	75.8	0.3
	115.0	151.2	103.4	47.01	46.89	0.017	4165	2578	38.64	1.186	21.2	77.0	0.4
	115.0	150.0	101.5	44.98	44.86	0.018	4051	2694	42.12	1.351	24.9	78.3	0.5
	115.0	149.0	100.0	42.81	42.69	0.015	3920	2799	45.39	1.513	28.8	79.6	0.4
	115.0	148.2	98.7	40.54	40.42	0.018	3772	2894	48.01	1.654	32.7	80.9	0.5
	115.0	147.5	97.5	38.10	38.00	0.015	3602	2979	49.99	1.773	36.7	82.2	0.4
	115.0	146.9	96.3	35.60	35.50	0.015	3417	3058	51.41	1.871	40.9	83.5	0.4
	115.0	146.2	95.3	32.99	32.90	0.014	3206	3127	51.76	1.927	44.8	84.5	0.4
	115.0	145.5	94.3	30.33	30.24	0.010	2981	3191	51.27	1.948	48.7	85.5	0.3
	115.0	144.9	93.5	27.54	27.46	0.010	2736	3250	50.12	1.939	52.9	86.4	0.3
	115.0	144.4	92.6	24.72	24.65	0.011	2476	3303	47.80	1.879	56.6	87.1	0.3
	115.0	143.9	91.9	21.84	21.80	0.011	2198	3352	44.40	1.772	60.1	87.5	0.3
	115.0	143.3	91.0	18.86	18.83	0.013	1897	3398	39.93	1.615	63.5	87.4	0.4
	115.0	143.0	90.3	15.89	15.86	0.012	1582	3440	34.17	1.400	66.0	86.5	0.4
	115.0	142.5	89.4	12.79	12.76	0.008	1238	3483	26.88	1.115	67.2	84.2	0.2
	115.0	142.0	88.8	9.83	9.80	0.010	873	3523	18.29	0.767	65.5	77.3	0.3
	115.0	141.7	88.0	7.14	7.12	0.009	479	3563	7.66	0.325	50.6	58.4	0.3
	115.0	141.3	87.6	6.12	6.12	0.009	217	3589	0.00	0.000	0.0	30.9	0.3

DRAWING NO. PAGE 1 of 8 REV.  
5K661BG -

Dayton Electric Mfg. Co. Lake Forest, IL 60045 USA



Performance Data



5K661BG

REV.  
-



Curve Descriptions:  
Motor(1) Test 1 Start 115V 60 Hz 2P  
3 LINE  
□ SPEED vs TORQUE  
■ SPEED vs ILine  
△ SPEED vs WATTS

Motor Ratings:  
(1) C055JZP217501 ID: 1  
5K661BG

DRAWING NO. PAGE 2 of 8 REV.  
5K661BG -

Dayton Electric Mfg. Co. Lake Forest, IL 60045 USA

# Performance Data



5K661BG		REV. -															
Dayton Manufacturing Company																	
Motor Description				Test Conditions													
Model:		C055JZP217501 5K661BG		Test Type:		Run		Run Cap:		0							
Motor ID:		1		Test Number:		2		Start Cap:		198 MFD 110 VOLT							
Poles:		2		Poles:		2		Environment:									
Volts:		115/208-230		Volts:		115		Tested:		8/17/2010 2:47:08 PM							
Frequency:		60		Hz:		60		Tested By:		Sharp, Gerald							
HP:		3/4		Rotation:				Gear Ratio:		1:1							
Speed:		3450		Special Cond:				Bearing Friction:		-0.47 Oz-Ft							
Phase:		1		Speed Conn:				Windage Torque:		-3.01 Oz-Ft							
Protector:		AUTO		TestBoard:		Amps Performance		Fixture #3									
Special Points		Vline (V)		Iline (A)		Watts		RPM		Tq (Oz-ft)		HP		Eff (%)		PF (%)	
		115.0		5.58		182		3577		0.00		0.000		0.0		28.3	
		115.0		7.77		643		3538		12.87		0.542		62.9		72.0	
18.3 OZ-FT		115.0		9.33		854		3518		18.30		0.766		67.0		79.5	
0.75 HP		115.0		9.22		839		3519		17.90		0.750		66.7		79.1	
		115.0		11.06		1066		3497		23.70		0.987		69.0		83.8	
27.5 OZ-FT		115.0		12.48		1233		3480		27.50		1.139		68.9		85.9	
		115.0		14.42		1452		3457		32.51		1.338		68.8		87.5	
3450 RPM		115.0		14.97		1511		3450		33.73		1.385		68.4		87.8	
		115.0		17.69		1800		3415		39.17		1.592		66.0		88.5	
		115.0		20.77		2118		3372		44.51		1.787		62.9		88.7	
		115.0		23.83		2413		3325		48.54		1.921		59.4		88.1	
		115.0		26.72		2687		3278		51.39		2.005		55.7		87.5	
		115.0		29.46		2926		3223		52.79		2.025		51.6		86.4	
		115.0		32.04		3144		3168		53.44		2.016		47.8		85.3	
BDT OZ-FT		115.0		34.12		3320		3120		54.11		2.010		45.2		84.6	
		115.0		34.62		3359		3107		53.90		1.994		44.3		84.4	
		115.0		37.04		3542		3042		53.13		1.924		40.5		83.1	
		115.0		39.33		3709		2969		51.75		1.829		36.8		82.0	
		115.0		41.52		3858		2890		49.60		1.707		33.0		80.8	
		115.0		43.55		3986		2806		47.01		1.570		29.4		79.6	
		115.0		45.47		4101		2713		44.07		1.423		25.9		78.4	
		115.0		47.21		4190		2613		40.75		1.268		22.6		77.2	
		115.0		48.86		4284		2503		37.40		1.115		19.4		76.2	
		115.0		50.37		4346		2385		33.75		0.958		16.4		75.0	
		115.0		51.79		4399		2254		29.69		0.797		13.5		73.9	
		115.0		53.12		4453		2108		25.67		0.644		10.8		72.9	
		115.0		54.22		4489		1960		22.18		0.518		8.6		72.0	
		115.0		55.17		4517		1807		18.58		0.400		6.6		71.2	
		115.0		56.07		4541		1636		15.08		0.294		4.8		70.4	
		115.0		56.86		4555		1449		11.33		0.195		3.2		69.7	
		115.0		57.74		4719		1265		16.12		0.243		3.8		71.1	
		115.0		58.36		5284		1064		40.99		0.519		7.3		78.7	
		115.0		58.74		5300		832		39.09		0.387		5.4		78.5	
		115.0		58.98		5305		587		38.06		0.266		3.7		78.2	
		115.0		59.22		5312		326		37.17		0.144		2.0		78.0	

DRAWING NO.

PAGE 3 of 8

5K661BG

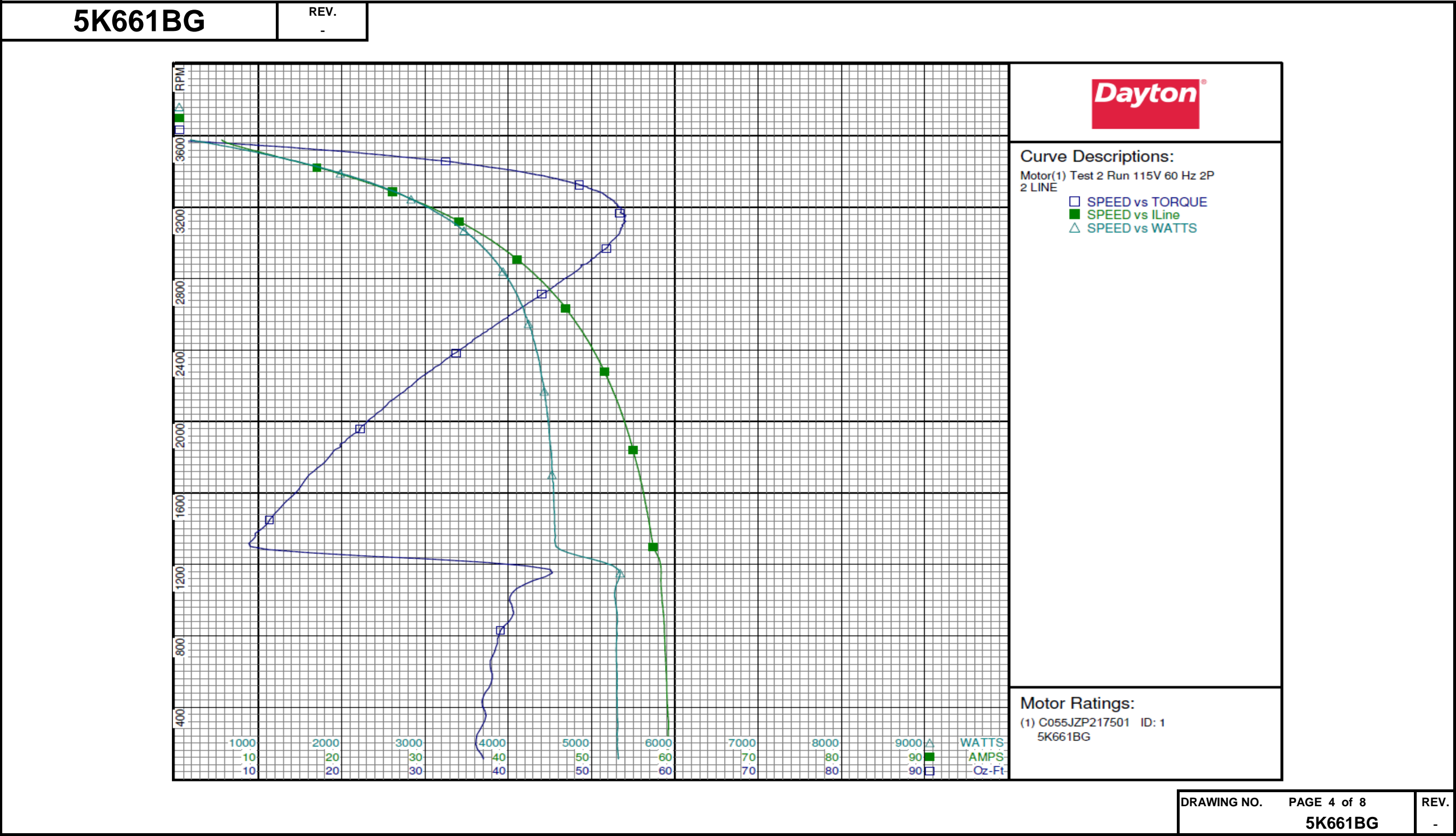
REV.

-

DRAWING NO.	PAGE 3 of 8	REV.
	5K661BG	-

Dayton Electric Mfg. Co. Lake Forest, IL 60045 USA

Performance Data



# Performance Data



5K661BG		REV. -								
Dayton Manufacturing Company										
Motor Description				Test Conditions						
Model:	C055JZP217501 5K661BG			Test Type:	Start		Run Cap:	0		
Motor ID:	1			Test Number:	6		Start Cap:	198 MFD 110 VOLT		
Poles:	2			Poles:	2		Environment:			
Volts:	115/208-230			Volts:	230		Tested:	8/18/2010 10:35:37 AM		
Frequency:	60			Hz:	60		Tested By:	Sharp, Gerald		
HP:	3/4			Rotation:			Gear Ratio:	1:1		
Speed:	3450			Special Cond:			Bearing Friction:	-0.55 Oz-Ft		
Phase:	1			Speed Conn:			Windage Torque:	-3.13 Oz-Ft		
Protector:	AUTO			TestBoard:	Amps Performance		Fixture #3			
Special Points	Vline (V)	Vaux (V)	Vcap (V)	Iline (A)	Watts	RPM	Tq(Oz-ft)	HP	Eff (%)	PF (%)
	230.0	81.1	127.3	31.22	5482	1	39.00	0.000	0.0	76.3
	230.0	82.0	126.6	31.20	5479	67	37.41	0.030	0.4	76.4
PUT OZ-FT	230.0	83.9	123.4	31.05	5451	332	36.82	0.145	2.0	76.3
	230.0	84.1	123.2	31.03	5455	361	36.99	0.159	2.2	76.4
	230.0	87.4	120.3	30.91	5456	675	38.92	0.313	4.3	76.8
	230.0	91.0	118.0	30.74	5466	960	40.96	0.468	6.4	77.3
	230.0	94.2	114.1	30.44	5453	1214	44.37	0.641	8.8	77.9
	230.0	98.4	112.1	30.26	5470	1444	48.19	0.829	11.3	78.6
	230.0	102.3	110.2	30.12	5496	1653	52.10	1.025	13.9	79.3
	230.0	113.8	118.4	30.39	5658	1850	54.72	1.205	15.9	81.0
	230.0	123.1	120.7	29.20	5598	2023	56.53	1.361	18.1	83.4
	230.0	130.5	115.2	28.61	5456	2185	58.81	1.530	20.9	82.9
	230.0	166.9	128.1	25.85	4372	2325	32.53	0.900	15.4	73.5
	230.0	165.7	125.5	25.04	4299	2454	35.65	1.042	18.1	74.6
	230.0	164.1	123.1	24.10	4206	2579	39.35	1.208	21.4	75.9
	230.0	162.8	121.3	23.07	4114	2695	43.05	1.381	25.1	77.5
	230.0	161.9	119.8	21.97	3988	2801	46.47	1.549	29.0	78.9
	230.0	160.9	118.4	20.80	3838	2896	49.15	1.694	32.9	80.3
	230.0	160.1	117.3	19.57	3674	2981	51.18	1.817	36.9	81.6
	230.0	159.4	116.2	18.29	3485	3058	52.47	1.910	40.9	82.9
	230.0	158.8	115.2	16.96	3280	3128	53.03	1.975	44.9	84.1
	230.0	158.2	114.5	15.59	3052	3193	52.56	1.997	48.8	85.1
	230.0	157.6	113.6	14.17	2804	3251	51.11	1.978	52.6	86.1
	230.0	157.2	112.7	12.74	2546	3304	48.81	1.920	56.3	86.9
	230.0	156.8	112.0	11.25	2254	3352	45.41	1.812	60.0	87.1
	230.0	156.3	111.3	9.73	1951	3399	40.86	1.653	63.2	87.1
	230.0	156.0	110.5	8.20	1629	3442	35.20	1.442	66.0	86.4
	230.0	155.5	109.9	6.61	1278	3484	27.69	1.148	67.0	84.1
	230.0	155.0	109.4	5.06	902	3525	18.77	0.788	65.1	77.6
	230.0	154.7	108.7	3.66	506	3564	8.22	0.349	51.5	60.1
	230.0	154.5	108.3	3.05	204	3593	0.00	0.000	0.0	29.1
							DRAWING NO.	PAGE 5 of 8		REV.
							5K661BG			-

Dayton Electric Mfg. Co. Lake Forest, IL 60045 USA

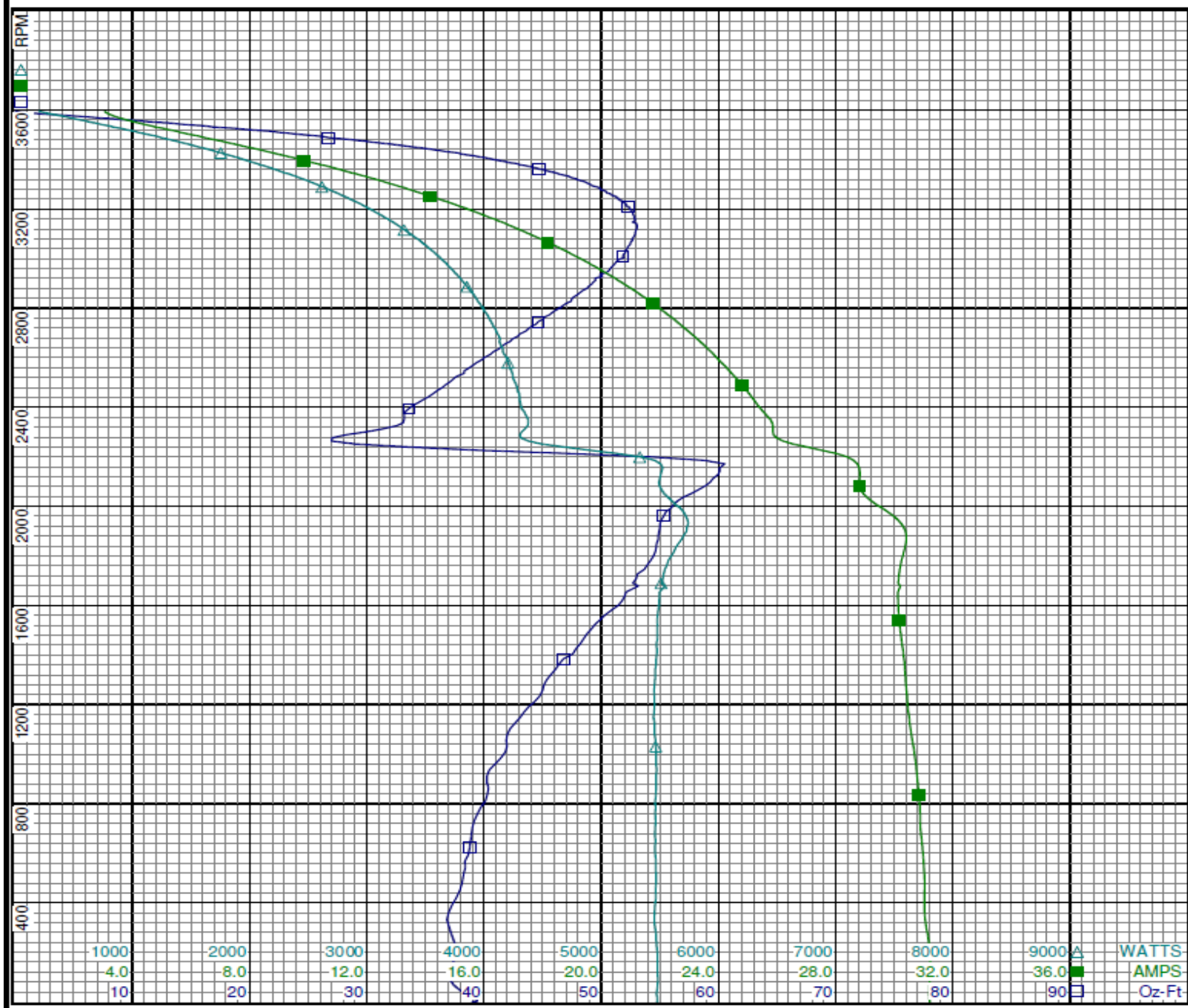


Performance Data



5K661BG

REV.  
-



Curve Descriptions:  
Motor(1) Test 6 Start 230V 60 Hz 2P  
3 LINE  
□ SPEED vs TORQUE  
■ SPEED vs ILine  
△ SPEED vs WATTS

Motor Ratings:  
(1) C055JZP217501 ID: 1  
5K661BG



# Performance Data



**5K661BG**

REV.  
-

## Dayton Manufacturing Company

### Motor Description

Model: C055JZP217501 5K661BG  
 Motor ID: 1  
 Poles: 2  
 Volts: 115/208-230  
 Frequency: 60  
 HP: 3/4  
 Speed: 3450  
 Phase: 1  
 Protector: AUTO

### Test Conditions

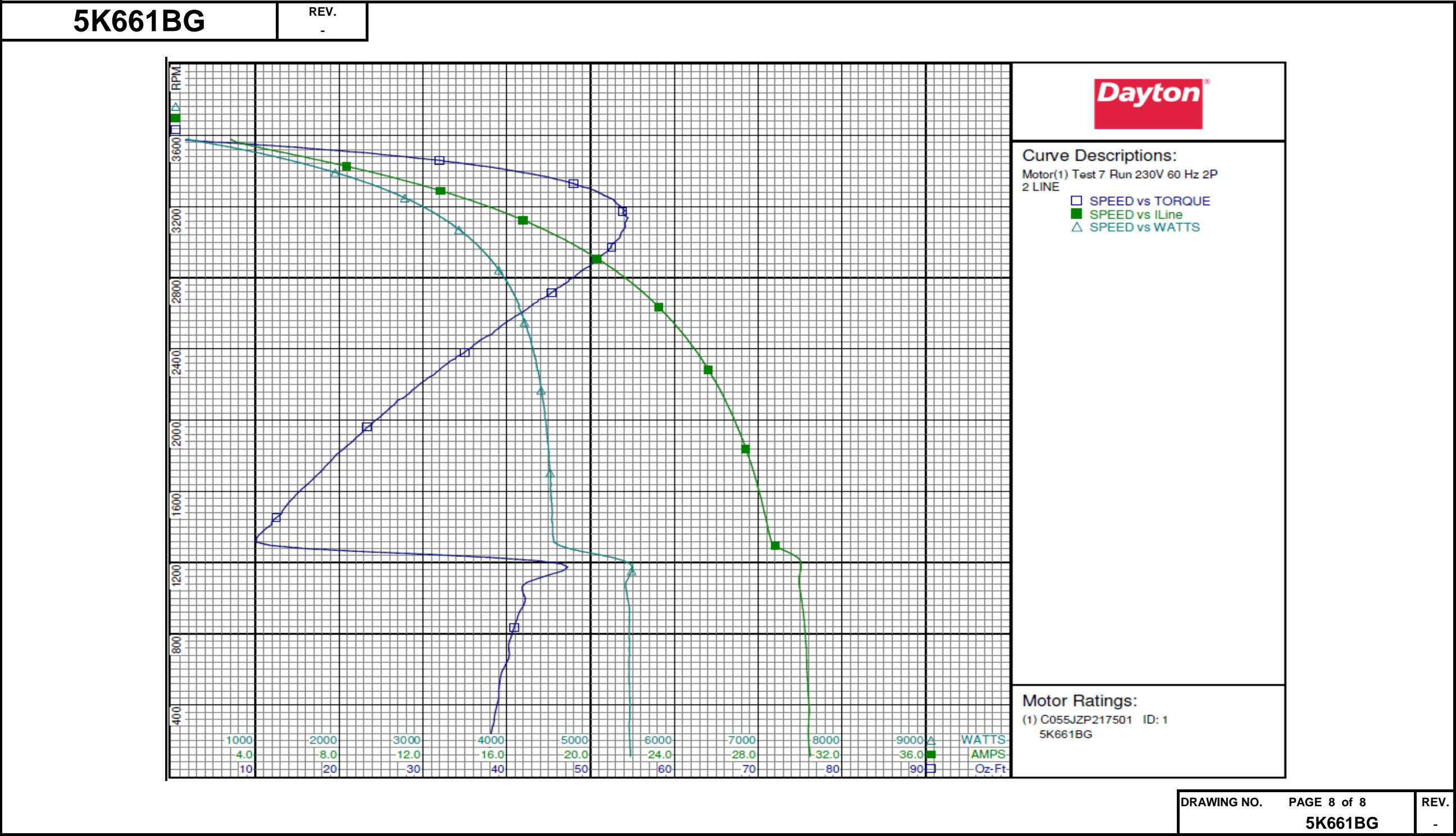
Test Type: Run  
 Test Number: 7  
 Poles: 2  
 Volts: 230  
 Hz: 60  
 Rotation:  
 Special Cond:  
 Speed Conn:  
 TestBoard: Amps Performance Fixture #3  
 Run Cap: 0  
 Start Cap: 198 MFD 110 VOLT  
 Environment:  
 Tested: 8/18/2010 9:28:25 AM  
 Tested By: Sharp, Gerald  
 Gear Ratio: 1:1  
 Bearing Friction: -0.56 Oz-Ft  
 Windage Torque: -2.92 Oz-Ft

Special Points	Vline (V)	Iline (A)	Watts	RPM	Tq(Oz-ft)	HP	Eff (%)	PF (%)
	230.0	2.82	175	3578	0.00	0.000	0.0	27.1
	230.0	3.89	637	3539	12.91	0.544	63.6	71.3
18.3 OZ-FT	230.0	4.65	849	3519	18.30	0.767	67.4	79.4
0.75 HP	230.0	4.60	834	3520	17.90	0.750	67.1	78.9
	230.0	5.48	1050	3500	23.54	0.981	69.7	83.4
27.5 OZ-FT	230.0	6.23	1225	3481	27.50	1.140	69.4	85.5
	230.0	7.07	1415	3459	32.02	1.319	69.5	87.0
3450 RPM	230.0	7.41	1489	3450	33.32	1.369	68.6	87.3
	230.0	8.67	1759	3416	38.74	1.576	66.8	88.2
	230.0	10.20	2072	3373	43.94	1.765	63.5	88.3
	230.0	11.69	2368	3328	47.96	1.900	59.9	88.1
	230.0	13.10	2635	3279	50.97	1.989	56.3	87.5
	230.0	14.48	2882	3226	52.92	2.032	52.6	86.6
	230.0	15.78	3108	3170	53.84	2.032	48.8	85.6
BDT OZ-FT	230.0	16.54	3232	3136	54.46	2.033	46.9	85.0
	230.0	17.04	3314	3109	54.10	2.003	45.1	84.6
	230.0	18.24	3502	3043	53.56	1.940	41.3	83.5
	230.0	19.41	3672	2970	52.49	1.856	37.7	82.2
	230.0	20.51	3824	2893	50.46	1.738	33.9	81.1
	230.0	21.55	3957	2807	48.15	1.609	30.3	79.8
	230.0	22.52	4075	2715	45.35	1.466	26.8	78.7
	230.0	23.42	4161	2614	42.13	1.311	23.5	77.3
	230.0	24.25	4246	2505	38.66	1.153	20.3	76.1
	230.0	25.06	4318	2383	34.99	0.993	17.1	74.9
	230.0	25.76	4381	2254	31.26	0.839	14.3	74.0
	230.0	26.44	4429	2110	26.90	0.676	11.4	72.8
	230.0	27.00	4472	1960	23.35	0.545	9.1	72.0
	230.0	27.50	4501	1805	19.63	0.422	7.0	71.2
	230.0	27.95	4526	1634	16.08	0.313	5.2	70.4
	230.0	28.35	4538	1452	12.50	0.216	3.6	69.6
	230.0	29.36	4904	1260	23.07	0.346	5.3	72.6
	230.0	29.96	5416	1066	41.83	0.531	7.3	78.6
	230.0	30.22	5458	833	40.86	0.405	5.5	78.5
	230.0	30.33	5459	586	39.39	0.275	3.8	78.3
	230.0	30.42	5468	325	38.48	0.149	2.0	78.2

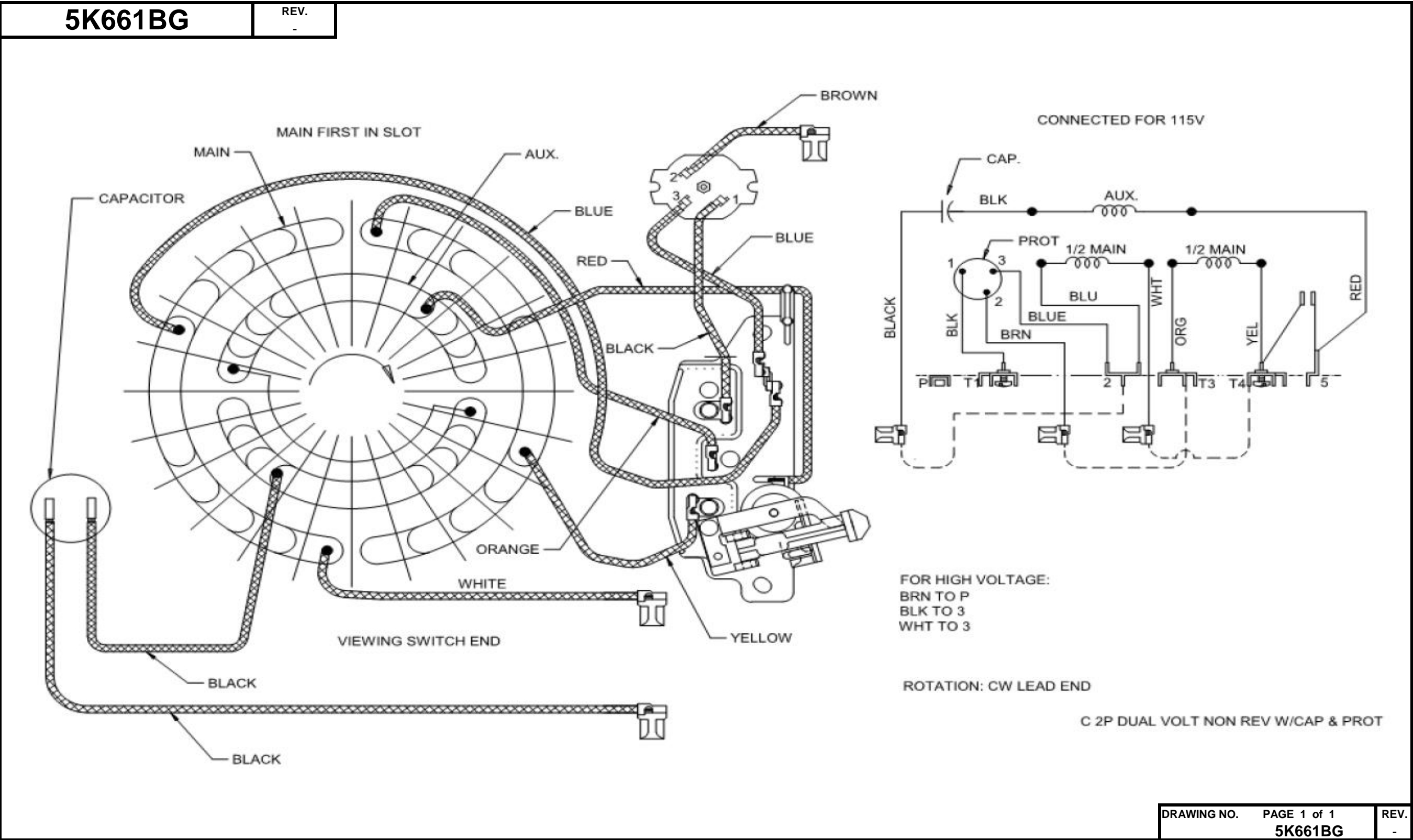
DRAWING NO.	PAGE 7 of 8	REV.
5K661BG		-

Dayton Electric Mfg. Co. Lake Forest, IL 60045 USA

Performance Data



Wiring Diagram



Dayton Electric Mfg. Co. Lake Forest, IL 60045 USA

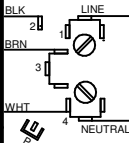
**Dayton**<sup>®</sup>

# JET PUMP MOTOR

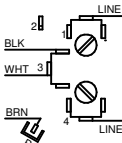
**HP:** 3/4**VOLTS:** 115/208-230**AMPS:** 10.4/5.4-5.2**RPM:** 3450**DUTY:** CONT**SF:** 1.5**KVA CODE:** L**ENCL:** ODP**THERMALLY PROTECTED:** AUTOMFG. NO. PROT. CODE: **MTR REF:** C55JXJZP-2175**PH:** 1**HZ:** 60**FR:** 56J**INS CL:** B**AMB:** 40 °C**SFA:** 12.8/7.0-6.4AVG. F.L.  
EFF.Part  
No **5K661BG****Disconnect Power Before Making  
Any Electrical Connections or Changes**

## CONNECTIONS

### LOW VOLTAGE



### HIGH VOLTAGE

**MOTOR IS NON-REVERSIBLE  
CCW ROTATION SHAFT END****UL**<sup>®</sup>  
E37403**CS**<sup>®</sup>  
258501

Mfd for Dayton Electric Mfg. Co., Lake Forest, IL 60045 USA

Made in Mexico