

Dimensional Drawing



DRAWING NO.	PAGE 1 of 1	REV
	5K618BE	-

Dayton Electric Mfg. Co. Lake Forest, IL 60045 USA

Performance Data



5K618BE

REV.

-

MOTOR PERFORMANCE

HP:	1/2 / 1/4 HP							
Poles:	4 / 6 POLES	4 POLE	6 POLE					
No. of Speeds:	2							
Volts:	115	115	115					
HZ:	60	60	60					
Service Factor:	1							
Efficiency:	@ Rated Load	64	51.8					
Power Factor:	@ Rated Load	70.9	62.7					
Amps:	@ No Load	NA	NA					
	@ Rated Load	7.2	5					
	@ Service Factor	NA	NA					
	@ Locked Rotor	46.18	NA					
RPM:	@ Rated Load							
Ambient (°C):	40							
Altitude (FASL):								
Torques:	Breakdown	55	36.19					
	Locked Rotor	33.4	NA					
	Pull-Up	33.24	NA					
	Rated Load							
	Service Factor							
Watts:	Rated Load							
KVA Code:								
Temperature Rise:	@ Rated Load	57.5	59.9					
	@ Service Factor							
Thermal Protector:	Trip Temp (°C)							
Winding Material:	Start (Auxiliary)	AL	AL					
	Run (Main)	AL	CU					
Capacitor(s):	Start (MFD / Volts)							
	No. of Start Capacitors							
	Run (MFD / Volts)							
	No. of Run Capacitors							

LOW SPEED PERFORMANCE DATA:

HP:								
Poles:								
Volts:								
HZ:								
Efficiency:	@ Rated Load							
Power Factor:	@ Rated Load							
Amps:	@ No Load							
	@ Rated Load							
	@ Service Factor							
	@ Locked Rotor							
Torques:	@ Rated Load							
	Locked Rotor							
	Pull-Up							
	Rated Load							
	Service Factor							
Watts:	@ Rated Load							
Temperature Rise:	@ Rated Load							
	@ Service Factor							

DRAWING NO. PAGE 1 REV.
5K618BE -

Dayton Electric Mfg. Co. Lake Forest, IL 60045

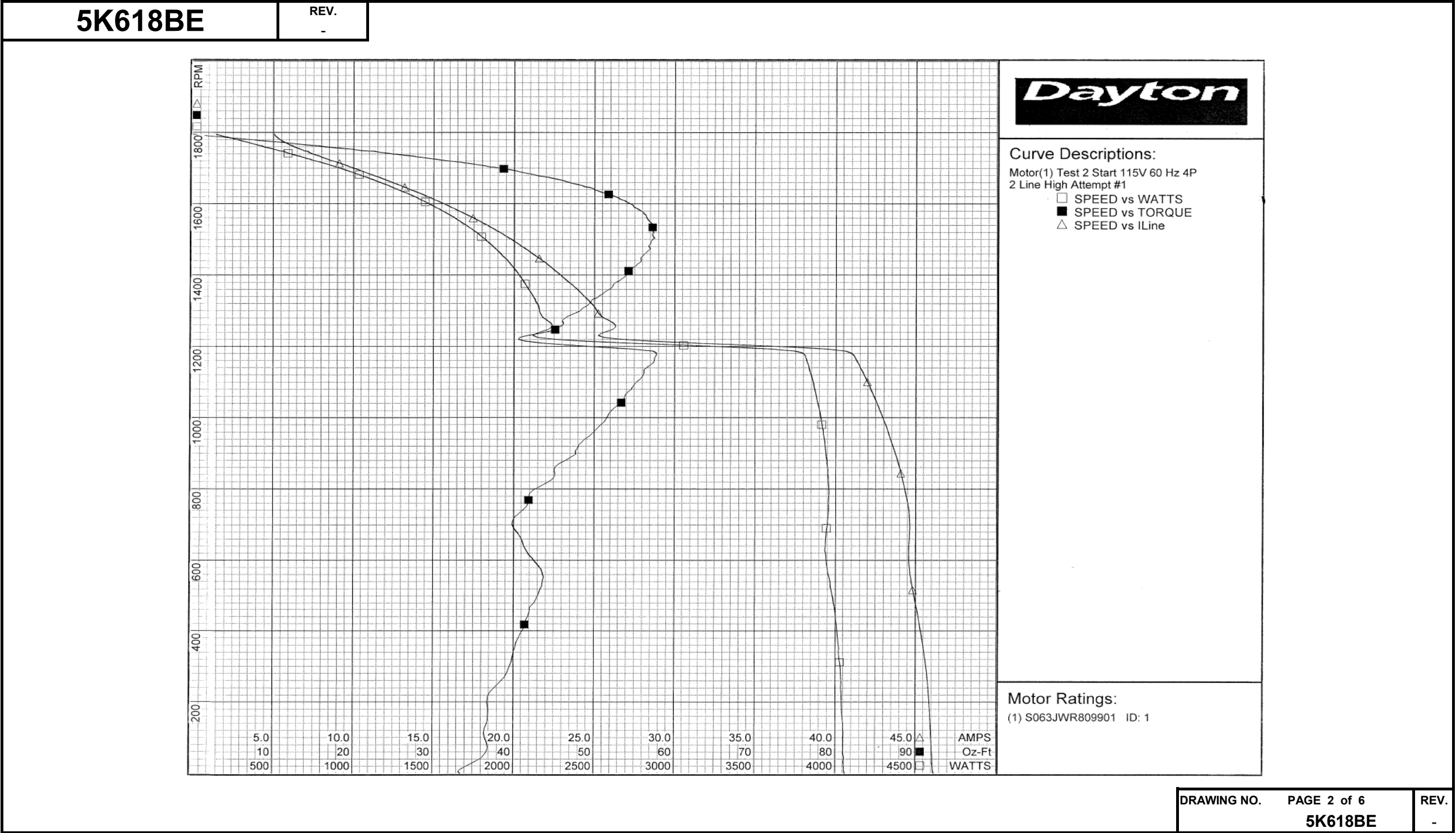
Performance Data



5K618BE		REV. -									
Dayton Manufacturing Company											
Motor Description				Test Conditions							
Model:		S063JWR809901		Test Type:		Start		Run Cap:		0	
Motor ID:		1		Test Number:		2		Start Cap:		0µfd	
Poles:		4/6		Poles:		4					
Volts:		115		Volts:		115		Tested:		3/26/2012 2:42:20 PM	
Frequency:		60		Hz:		60		Tested By:		Sharp, Gerald	
HP:		See Note		Rotation:				Gear Ratio:		1:1	
Speed:		1725/1140		Special Cond:		2 Line		Bearing Friction:		-0.65 Oz-Ft	
Phase:		1		Speed Conn:		High		Windage Torque:		-2.54 Oz-Ft	
Protector:		NONE		TestBoard:		Amps Performance		Fixture #3			
Special Points		Vline (V)	Iline (A)	Watts	RPM	Tq (Oz-ft)	HP	Eff (%)	PF (%)		
		115.0	46.18	4063	0	33.44	0.000	0.0	76.5		
PUT OZ-FT		115.0	46.10	4057	4	33.24	0.002	0.0	76.5		
		115.0	46.04	4053	33	35.38	0.014	0.3	76.5		
		115.0	45.88	4042	184	36.87	0.081	1.5	76.6		
		115.0	45.53	4021	340	39.98	0.162	3.0	76.8		
		115.0	44.99	3988	480	42.53	0.243	4.5	77.1		
		115.0	44.58	3941	606	42.31	0.305	5.8	76.9		
		115.0	44.61	3951	720	40.08	0.344	6.5	77.0		
		115.0	44.18	3954	826	44.79	0.441	8.3	77.8		
		115.0	43.54	3933	923	48.04	0.528	10.0	78.5		
		115.0	42.83	3903	1012	51.83	0.624	11.9	79.2		
		115.0	42.05	3863	1092	54.98	0.715	13.8	79.9		
		115.0	41.20	3814	1167	57.52	0.799	15.6	80.5		
		115.0	25.24	2117	1230	41.75	0.612	21.6	72.9		
		115.0	25.25	2163	1293	47.59	0.733	25.3	74.5		
		115.0	24.10	2103	1351	51.25	0.825	29.2	75.9		
		115.0	22.78	2026	1404	54.27	0.907	33.4	77.3		
		115.0	21.43	1935	1451	55.83	0.964	37.2	78.5		
		115.0	20.05	1837	1493	56.99	1.013	41.1	79.7		
		115.0	18.63	1727	1531	57.27	1.044	45.1	80.6		
		115.0	17.19	1608	1566	56.42	1.052	48.8	81.3		
		115.0	15.75	1483	1597	54.67	1.039	52.3	81.8		
		115.0	14.25	1345	1627	51.75	1.002	55.6	82.0		
		115.0	12.81	1204	1653	48.03	0.945	58.6	81.8		
		115.0	11.39	1061	1677	43.33	0.865	60.8	81.0		
		115.0	9.99	911	1699	38.22	0.773	63.3	79.3		
		115.0	8.62	755	1721	31.49	0.645	63.7	76.2		
		115.0	7.42	607	1740	24.76	0.513	63.1	71.1		
		115.0	6.29	442	1760	16.46	0.345	58.2	61.1		
		115.0	5.37	263	1781	6.67	0.141	40.2	42.5		
		115.0	5.06	142	1794	0.00	0.000	0.0	24.4		
DRAWING NO. PAGE 1 of 6										REV.	
5K618BE										-	

Dayton Electric Mfg. Co. Lake Forest, IL 60045 USA

Performance Data



Performance Data



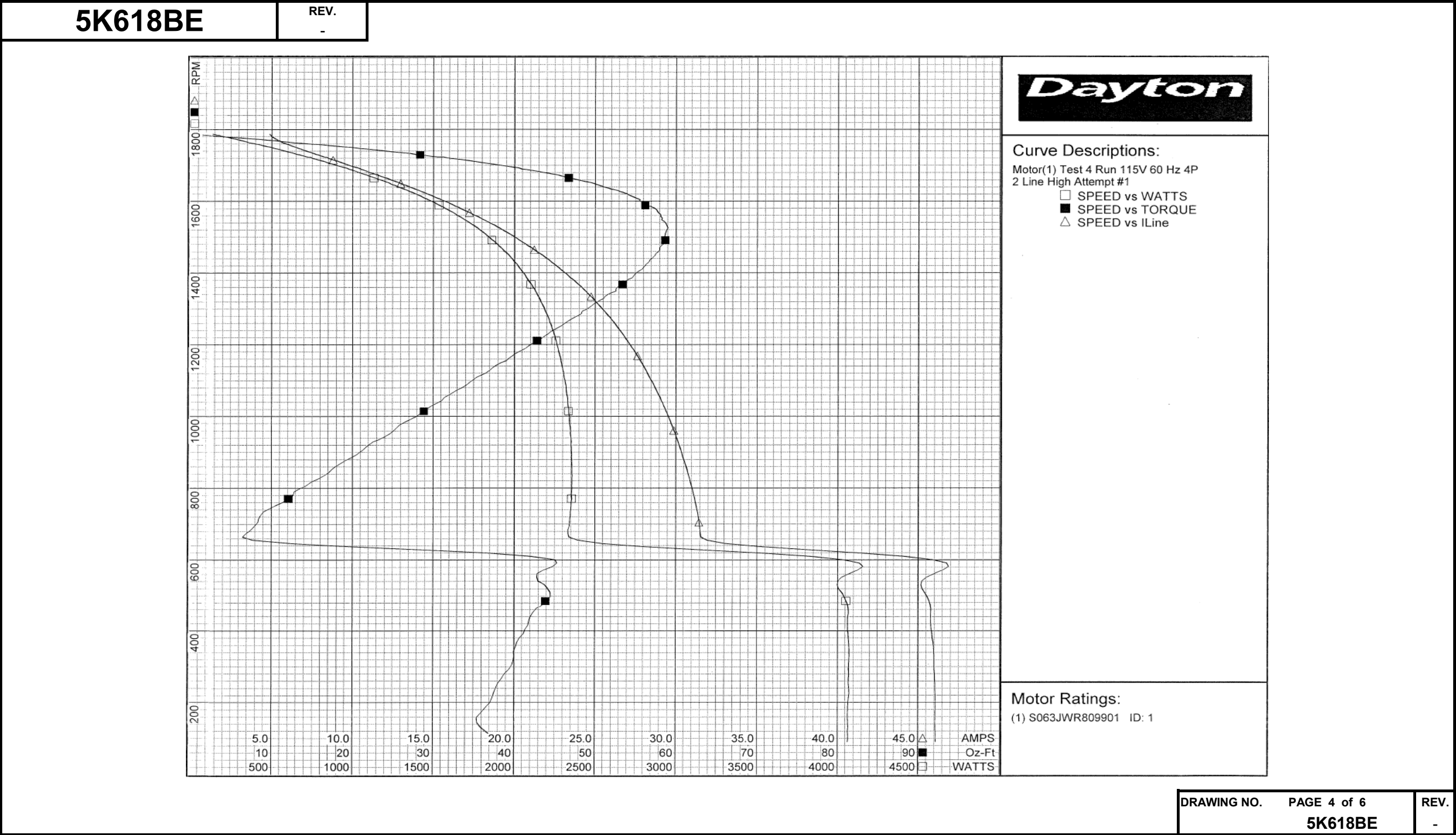
5K618BE		REV. -							
Dayton Manufacturing Company									
Motor Description					Test Conditions				
Model: S063JWR809901		Test Type: Run		Run Cap: 0					
Motor ID: 1		Test Number: 4		Start Cap: 0µfd					
Poles: 4/6		Poles: 4							
Volts: 115		Volts: 115		Tested: 3/26/2012 2:38:45 PM					
Frequency: 60		Hz: 60		Tested By: Sharp, Gerald					
HP: See Note		Rotation:		Gear Ratio: 1:1					
Speed: 1725/1140		Special Cond: 2 Line		Bearing Friction: -0.67 Oz-Ft					
Phase: 1		Speed Conn: High		Windage Torque: -2.53 Oz-Ft					
Protector: NONE		TestBoard: Amps Performance		Fixture #3					
Special Points	Vline (V)	Iline (A)	Watts	RPM	Tq (Oz-ft)	HP	Eff (%)	PF (%)	
	115.0	4.88	135	1787	0.00	0.000	0.0	24.0	
	115.0	5.48	324	1768	10.66	0.224	51.7	51.4	
	115.0	6.66	517	1747	20.84	0.433	62.6	67.5	
0.5 HP	115.0	7.15	583	1740	24.14	0.500	64.0	70.9	
24.3 OZ-FT	115.0	7.18	587	1739	24.30	0.503	64.0	71.1	
	115.0	7.98	689	1727	29.08	0.598	64.7	75.1	
1725 RPM	115.0	8.14	708	1725	29.81	0.612	64.5	75.7	
	115.0	9.29	842	1708	35.83	0.728	64.5	78.9	
	115.0	10.80	1009	1685	42.26	0.848	62.7	81.3	
	115.0	12.28	1163	1661	47.45	0.938	60.2	82.3	
	115.0	13.70	1300	1637	51.52	1.004	57.6	82.5	
	115.0	15.20	1444	1609	55.03	1.054	54.4	82.6	
	115.0	16.67	1573	1580	57.40	1.079	51.2	82.1	
	115.0	18.07	1692	1548	58.22	1.073	47.3	81.4	
BDT OZ-FT	115.0	19.08	1773	1524	59.00	1.071	45.1	80.8	
	115.0	19.49	1804	1514	58.78	1.059	43.8	80.5	
	115.0	20.82	1902	1476	58.23	1.023	40.1	79.5	
	115.0	22.11	1990	1436	56.81	0.971	36.4	78.3	
	115.0	23.34	2068	1392	54.77	0.907	32.7	77.1	
	115.0	24.52	2136	1344	51.90	0.830	29.0	75.7	
	115.0	25.61	2191	1292	48.34	0.744	25.3	74.4	
	115.0	26.61	2241	1236	44.49	0.654	21.8	73.2	
	115.0	27.55	2279	1174	40.08	0.560	18.3	71.9	
	115.0	28.40	2308	1108	35.30	0.466	15.0	70.7	
	115.0	29.20	2330	1037	30.46	0.376	12.0	69.4	
	115.0	29.89	2347	961	25.15	0.288	9.1	68.3	
	115.0	30.53	2355	878	19.18	0.200	6.3	67.1	
	115.0	31.07	2354	790	12.78	0.120	3.8	65.9	
	115.0	31.47	2340	695	7.96	0.066	2.1	64.7	
	115.0	45.85	4029	601	45.03	0.322	6.0	76.4	
	115.0	45.55	4041	497	44.46	0.263	4.9	77.1	
	115.0	45.86	4068	380	40.64	0.184	3.4	77.1	
	115.0	46.04	4068	254	38.01	0.115	2.1	76.8	
	115.0	46.06	4064	119	36.53	0.052	0.9	76.7	

DRAWING NO.	PAGE 3 of 6	REV.
5K618BE		-

DRAWING NO.	PAGE 3 of 6	REV.
5K618BE		-

Dayton Electric Mfg. Co. Lake Forest, IL 60045 USA

Performance Data



Performance Data



5K618BE

REV.
-

Dayton Manufacturing Company

Motor Description				Test Conditions				
Model:	S063JWR809901			Test Type:	Run	Run Cap:	0	
Motor ID:	1			Test Number:	7	Start Cap:	0µfd	
Poles:	4/6			Poles:	6	Tested:	3/26/2012 2:35:13 PM	
Volts:	115			Volts:	115	Tested By:	Sharp, Gerald	
Frequency:	60			Hz:	60	Gear Ratio:	1:1	
HP:	See Note			Rotation:		Bearing Friction:	-0.66 Oz-Ft	
Speed:	1725/1140			Special Cond:	2 Line	Windage Torque:	-1.94 Oz-Ft	
Phase:	1			Speed Conn:	Low			
Protector:	NONE			TestBoard:	Amps Performance	Fixture #3		
Special Points	Vline (V)	Iline (A)	Watts	RPM	Tq (Oz-ft)	HP	Eff (%)	PF (%)
	115.0	3.89	113	1190	0.00	0.000	0.0	25.3
0.062 HP	115.0	3.99	172	1181	4.41	0.062	26.9	37.4
4.57 OZ-FT	115.0	4.00	173	1180	4.57	0.064	27.7	37.6
	115.0	4.04	188	1176	6.06	0.085	33.6	40.5
0.167 HP	115.0	4.38	265	1164	12.05	0.167	47.0	52.6
12.2 OZ-FT	115.0	4.39	267	1164	12.20	0.169	47.3	52.8
	115.0	4.41	271	1162	12.61	0.174	48.0	53.4
	115.0	4.87	342	1150	17.42	0.238	52.1	61.0
0.25 HP	115.0	4.99	360	1146	18.32	0.250	51.8	62.7
18.4 OZ-FT	115.0	5.00	362	1146	18.40	0.251	51.7	62.9
1140 RPM	115.0	5.22	392	1140	20.39	0.277	52.6	65.3
	115.0	5.36	411	1137	21.57	0.292	53.0	66.6
	115.0	5.93	480	1122	25.38	0.339	52.6	70.4
	115.0	6.52	547	1106	28.54	0.376	51.2	73.0
	115.0	7.13	611	1089	31.20	0.404	49.4	74.5
	115.0	7.76	673	1071	33.55	0.428	47.4	75.5
	115.0	8.38	732	1052	34.93	0.437	44.6	76.0
	115.0	9.01	790	1030	35.65	0.437	41.3	76.2
BDT OZ-FT	115.0	9.50	832	1011	36.19	0.436	39.1	76.1
	115.0	9.63	841	1007	35.95	0.431	38.2	75.9
	115.0	10.24	890	982	35.81	0.419	35.1	75.6
	115.0	10.82	933	955	34.80	0.396	31.6	75.0
	115.0	11.37	971	925	33.71	0.371	28.5	74.3
	115.0	11.89	1005	893	31.99	0.340	25.3	73.5
	115.0	12.40	1038	857	30.27	0.309	22.2	72.8
	115.0	12.87	1065	819	27.56	0.269	18.8	71.9
	115.0	13.31	1087	779	25.30	0.235	16.1	71.0
	115.0	13.64	1100	734	21.96	0.192	13.0	70.1
	115.0	12.26	710	677	-20.41	-0.165	0.0	50.4
	115.0	39.06	3315	634	24.28	0.183	4.1	73.8
	115.0	44.79	3957	589	41.11	0.288	5.4	76.8
	115.0	45.27	4012	529	43.54	0.274	5.1	77.1
	115.0	45.46	4033	463	43.33	0.239	4.4	77.2
	115.0	45.60	4042	394	41.56	0.195	3.6	77.1
	115.0	45.72	4044	321	40.25	0.154	2.8	76.9
	115.0	45.77	4045	242	38.46	0.111	2.0	76.9
	115.0	45.75	4038	159	36.88	0.070	1.3	76.7

DRAWING NO. PAGE 5 of 6 REV.

5K618BE -

DRAWING NO.	PAGE 5 of 6	REV.
5K618BE		-

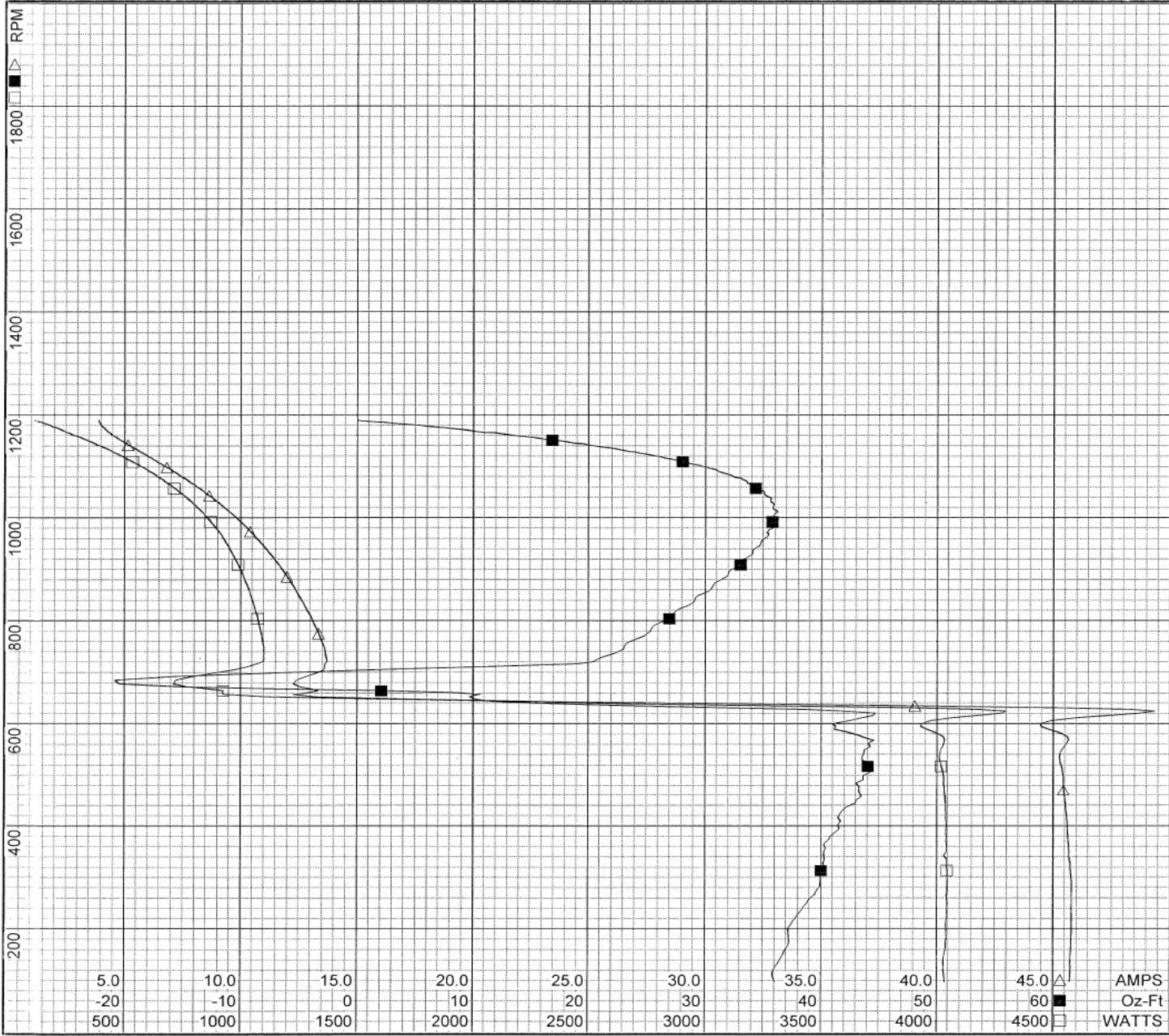
Dayton Electric Mfg. Co. Lake Forest, IL 60045 USA

Performance Data



5K618BE

REV.
-

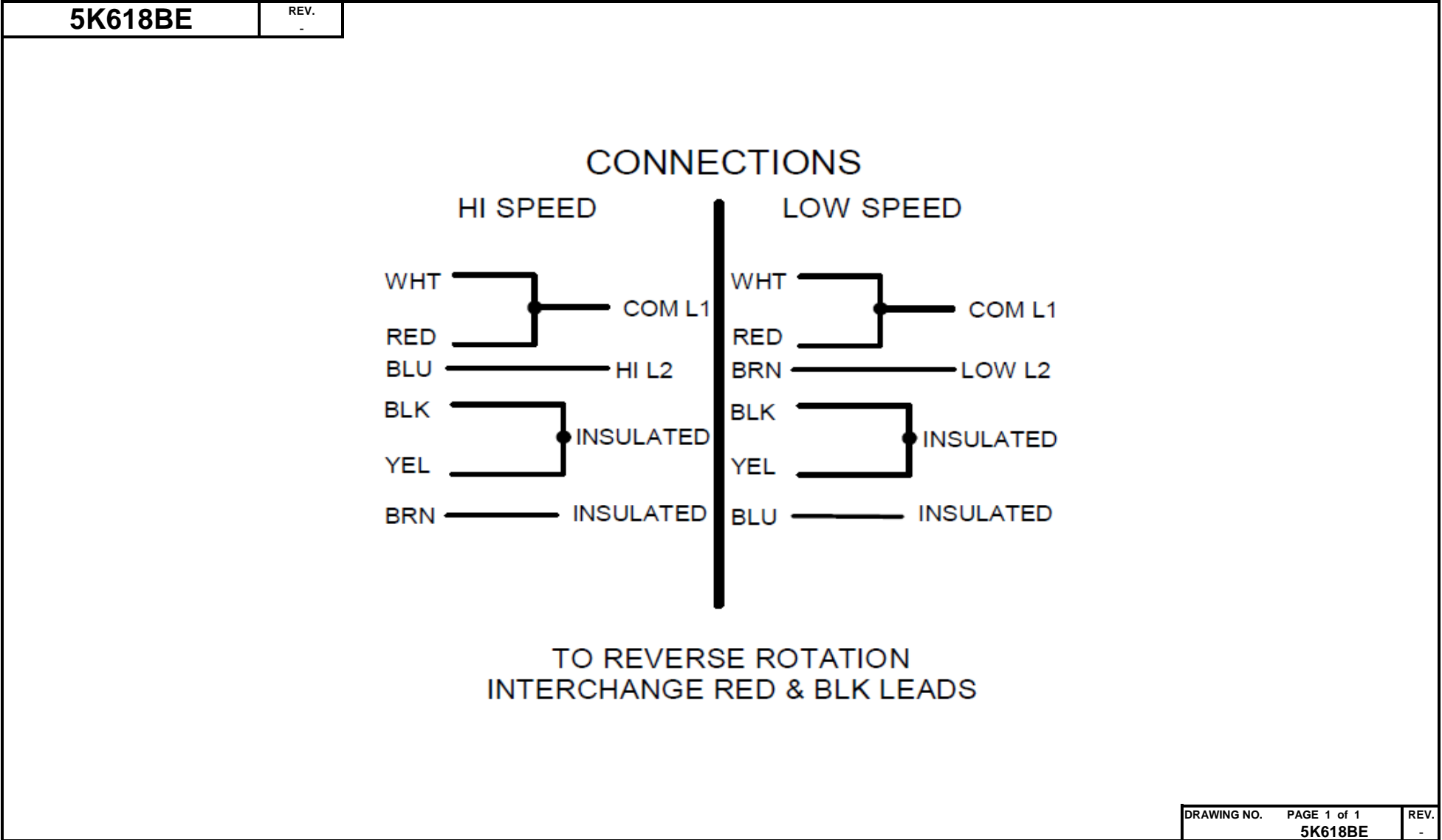


Curve Descriptions:
Motor(1) Test 7 Run 115V 60 Hz 6P
2 Line Low Attempt #1
□ SPEED vs WATTS
■ SPEED vs TORQUE
△ SPEED vs ILine

Motor Ratings:
(1) S063JWR809901 ID: 1

DRAWING NO.	PAGE 6 of 6	REV.
5K618BE		-

Dayton Electric Mfg. Co. Lake Forest, IL 60045 USA





Part No **5K618BE**



SPLIT PHASE MOTOR

HP: 1/2 / 1/4

VOLTS: 115

AMPS: 7.2/5.0

RPM: 1725/1140

DUTY: CONT

SF: 1.0

KVA CODE: M

MTR REF: S63JWR-8099

THERMALLY PROTECTED: NONE

PH: 1

HZ: 60

FR: 56

INS CL: B

AMB: 40 °C

SFA:

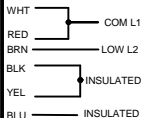
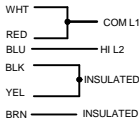
ENCL: TEFC

**Disconnect Power Before Making Any Electrical
Connections or Changes**

CONNECTIONS

HI SPEED

LOW SPEED



258501



E47479

**TO REVERSE ROTATION
INTERCHANGE RED & BLK LEADS**

Mfd for Dayton Electric Mfg. Co., Lake Forest, IL 60045 USA

Made in Mexico