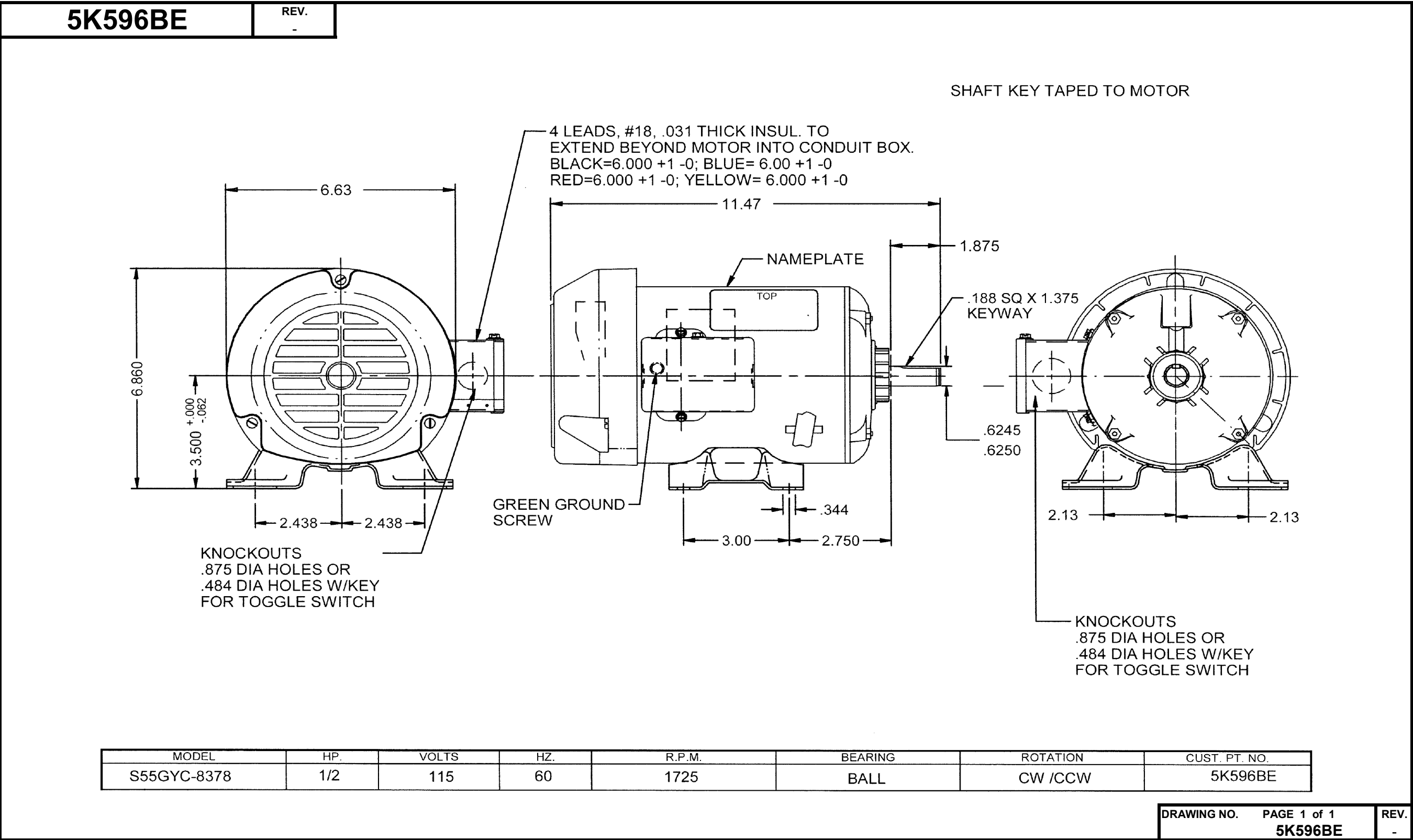


Dimensional Drawing



Performance Data



5K596BE

REV.  
-

MOTOR PERFORMANCE

HP:	1/2 HP							
Poles:	4P							
No. of Speeds:	1							
Volts:	115	115						
HZ:	60	60						
Service Factor:	1							
Efficiency:	@ Rated Load	63.9						
Power Factor:	@ Rated Load	63.5						
Amps:	@ No Load							
	@ Rated Load	8						
	@ Service Factor	N/A						
	@ Locked Rotor	63.64						
RPM:	@ Rated Load							
Ambient (°C):	40							
Altitude (FASL):								
Torques:	Breakdown	62.78						
	Locked Rotor	52.08						
	Pull-Up	48						
	Rated Load							
	Service Factor							
Watts:	Rated Load							
KVA Code:								
Temperature Rise:	@ Rated Load							
	@ Service Factor							
Thermal Protector:	Trip Temp (°C)							
Winding Material:	Start (Auxiliary)	Al						
	Run (Main)	Cu						
Capacitor(s):	Start (MFD / Volts)							
	No. of Start Capacitors							
	Run (MFD / Volts)							
	No. of Run Capacitors							
HP:								
Poles:								
Volts:								
HZ:								
Efficiency:	@ Rated Load							
Power Factor:	@ Rated Load							
Amps:	@ No Load							
	@ Rated Load							
	@ Service Factor							
	@ Locked Rotor							
Torques:	@ Rated Load							
	Locked Rotor							
	Pull-Up							
	Rated Load							
	Service Factor							
Watts:	@ Rated Load							
Temperature Rise:	@ Rated Load							
	@ Service Factor							

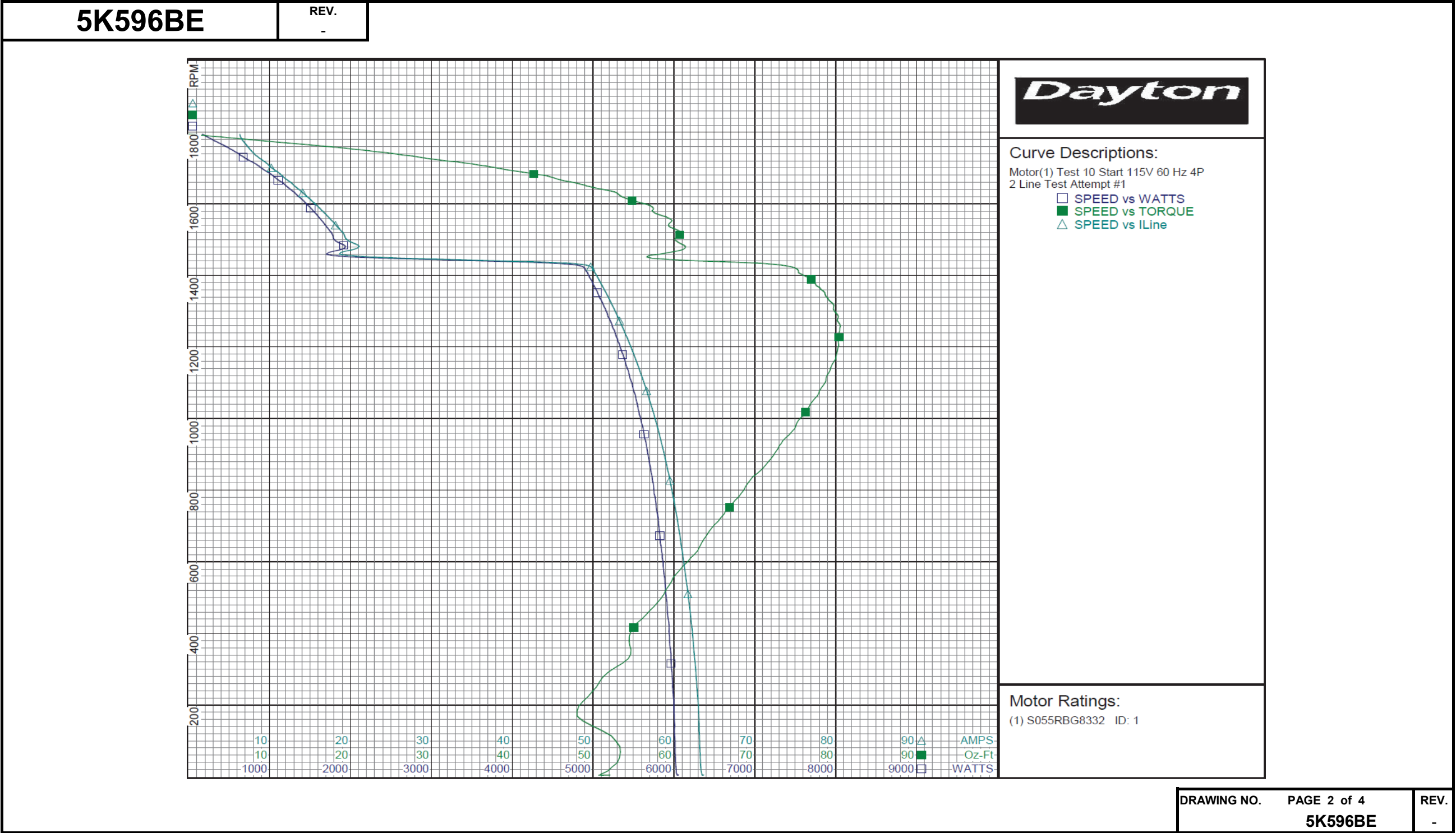
DRAWING NO. PAGE 1 REV.  
5K596BE -

# Performance Data



5K596BE		REV. -							
Dayton Manufacturing Company									
Motor Description					Test Conditions				
Model: S055RBG8332		Test Type: Start		Run Cap: 0					
Motor ID: 1		Test Number: 10		Start Cap: 0µfd					
Poles: 4		Poles: 4							
Volts: 115		Volts: 115		Tested: 3/30/2012 9:41:15 AM					
Frequency: 60		Hz: 60		Tested By: Sharp, Gerald					
HP: 1/2		Rotation:		Gear Ratio: 1:1					
Speed: 1725		Special Cond: 2 Line Test		Bearing Friction: -0.50 Oz-Ft					
Phase: 1		Speed Conn:		Windage Torque: -2.01 Oz-Ft					
Protector: NONE		TestBoard: Amps Performance		Fixture #1					
Special Points	Vline (V)	Iline (A)	Watts	RPM	Tq (Oz-ft)	HP	Eff (%)	PF (%)	
	115.0	63.64	6055	4	52.08	0.002	0.0	82.7	
	115.0	63.27	6019	38	53.00	0.024	0.3	82.7	
PUT OZ-FT	115.0	63.04	5999	183	48.00	0.104	1.3	82.7	
	115.0	63.04	5999	183	48.00	0.104	1.3	82.7	
	115.0	62.61	5964	316	53.62	0.202	2.5	82.8	
	115.0	62.10	5929	440	56.04	0.294	3.7	83.0	
	115.0	61.46	5885	556	59.90	0.396	5.0	83.3	
	115.0	60.79	5829	663	63.69	0.503	6.4	83.4	
	115.0	60.06	5777	762	67.22	0.610	7.9	83.6	
	115.0	59.25	5713	854	70.67	0.718	9.4	83.8	
	115.0	58.37	5645	940	73.52	0.822	10.9	84.1	
	115.0	57.42	5567	1019	76.30	0.925	12.4	84.3	
	115.0	56.41	5487	1092	78.44	1.020	13.9	84.6	
	115.0	55.36	5396	1159	79.80	1.102	15.2	84.8	
	115.0	54.28	5301	1222	80.45	1.170	16.5	84.9	
	115.0	53.16	5199	1279	80.26	1.222	17.5	85.1	
	115.0	52.03	5097	1332	79.12	1.254	18.4	85.2	
	115.0	50.90	4993	1381	77.36	1.272	19.0	85.3	
	115.0	49.73	4873	1424	74.44	1.262	19.3	85.2	
	115.0	18.80	1732	1464	59.47	1.037	44.6	80.1	
	115.0	19.41	1789	1502	60.13	1.076	44.9	80.1	
	115.0	18.29	1698	1537	59.36	1.086	47.7	80.7	
	115.0	16.98	1582	1570	58.14	1.086	51.2	81.0	
	115.0	15.65	1457	1599	56.49	1.075	55.1	81.0	
	115.0	14.35	1333	1625	53.20	1.029	57.6	80.8	
	115.0	13.07	1203	1649	49.23	0.967	59.9	80.1	
	115.0	11.80	1070	1673	45.07	0.897	62.5	78.9	
	115.0	10.59	930	1694	39.38	0.794	63.7	76.3	
	115.0	9.53	799	1715	33.82	0.690	64.4	72.9	
	115.0	8.32	648	1734	27.31	0.564	64.9	67.7	
	115.0	7.50	511	1753	20.07	0.419	61.2	59.2	
	115.0	6.83	354	1772	10.88	0.230	48.4	45.0	
	115.0	6.34	196	1791	1.90	0.041	15.4	26.9	
	115.0	6.30	165	1794	0.00	0.000	0.0	22.8	

Performance Data



Dayton Electric Mfg. Co. Lake Forest, IL 60045 USA

# Performance Data



5K596BE		REV. -															
Dayton Manufacturing Company																	
Motor Description					Test Conditions												
Model:		S055RBG8332			Test Type:		Run		Run Cap:		0						
Motor ID:		1			Test Number:		20		Start Cap:		0µfd						
Poles:		4			Poles:		4										
Volts:		115			Volts:		115		Tested:		3/30/2012 9:39:42 AM						
Frequency:		60			Hz:		60		Tested By:		Sharp, Gerald						
HP:		1/2			Rotation:				Gear Ratio:		1:1						
Speed:		1725			Special Cond:				Bearing Friction:		-0.56 Oz-Ft						
Phase:		1			Speed Conn:				Windage Torque:		-2.14 Oz-Ft						
Protector:		NONE			TestBoard:		Amps Performance		Fixture #1								
Special Points		Vline (V)		Iline (A)		Watts		RPM		Tq (Oz-ft)		HP		Eff (%)		PF (%)	
		115.0		6.15		147		1790		0.00		0.000		0.0		20.8	
		115.0		6.50		324		1770		10.35		0.218		50.1		43.4	
		115.0		7.43		506		1750		20.25		0.422		62.3		59.2	
0.5 HP		115.0		8.00		584		1741		24.13		0.500		63.9		63.5	
24.4 OZ-FT		115.0		8.04		589		1740		24.40		0.505		64.0		63.7	
		115.0		8.42		650		1731		27.73		0.572		65.6		67.1	
1725 RPM		115.0		8.70		697		1725		30.04		0.617		66.0		69.7	
		115.0		9.60		818		1711		35.66		0.727		66.3		74.0	
		115.0		10.83		961		1690		41.45		0.834		64.7		77.1	
		115.0		12.29		1119		1666		47.17		0.936		62.4		79.2	
		115.0		13.67		1265		1642		52.38		1.024		60.4		80.4	
		115.0		15.06		1402		1616		55.69		1.071		57.0		80.9	
		115.0		16.47		1537		1587		58.79		1.111		53.9		81.2	
		115.0		17.86		1662		1557		61.40		1.138		51.1		80.9	
		115.0		19.26		1781		1523		62.31		1.130		47.3		80.4	
BDT OZ-FT		115.0		19.53		1803		1516		62.78		1.133		46.9		80.3	
		115.0		20.62		1889		1487		62.08		1.099		43.4		79.7	
		115.0		21.94		1990		1446		61.92		1.066		40.0		78.9	
		115.0		23.19		2079		1403		60.46		1.010		36.3		77.9	
		115.0		24.40		2158		1356		57.96		0.935		32.3		76.9	
		115.0		25.54		2228		1305		55.47		0.862		28.8		75.9	
		115.0		26.61		2288		1250		52.06		0.775		25.3		74.8	
		115.0		27.60		2339		1189		48.28		0.683		21.8		73.7	
		115.0		28.52		2382		1124		44.05		0.589		18.5		72.6	
		115.0		29.35		2419		1054		39.60		0.497		15.3		71.7	
		115.0		30.13		2449		978		34.82		0.406		12.4		70.7	
		115.0		30.79		2472		898		30.26		0.323		9.8		69.8	
		115.0		31.40		2487		810		25.02		0.241		7.2		68.9	
		115.0		31.93		2502		716		19.96		0.170		5.1		68.1	
		115.0		32.40		2511		616		15.13		0.111		3.3		67.4	
		115.0		32.76		2518		509		10.94		0.066		2.0		66.8	
		115.0		33.02		2522		396		6.15		0.029		0.9		66.4	
		115.0		33.17		2522		274		2.36		0.008		0.2		66.1	
		115.0		33.23		2518		145		0.65		0.001		0.0		65.9	

DRAWING NO.

PAGE 3 of 4

REV.

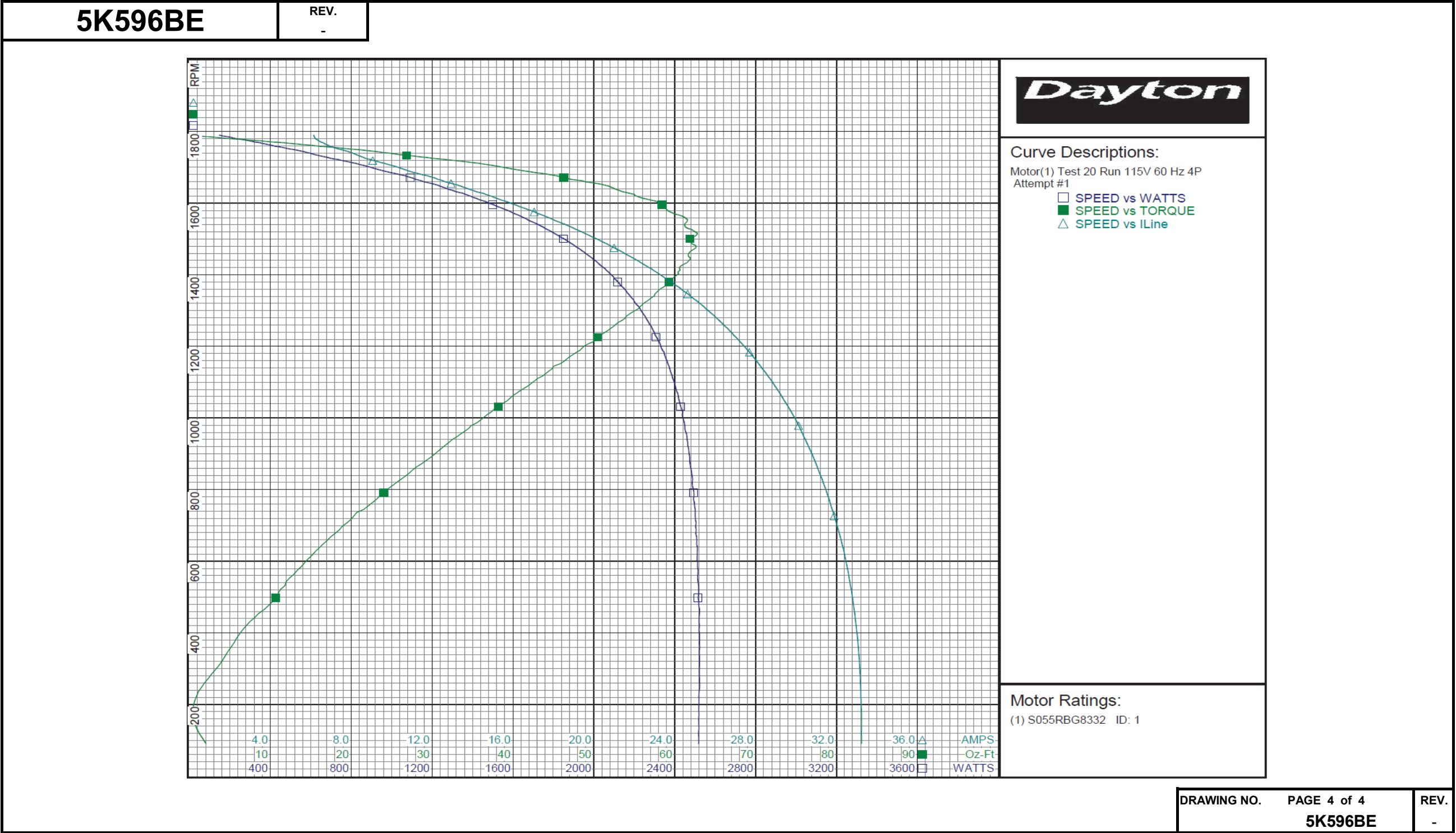
5K596BE

DRAWING NO.	PAGE 3 of 4	REV.
5K596BE		-

Dayton Electric Mfg. Co. Lake Forest, IL 60045 USA



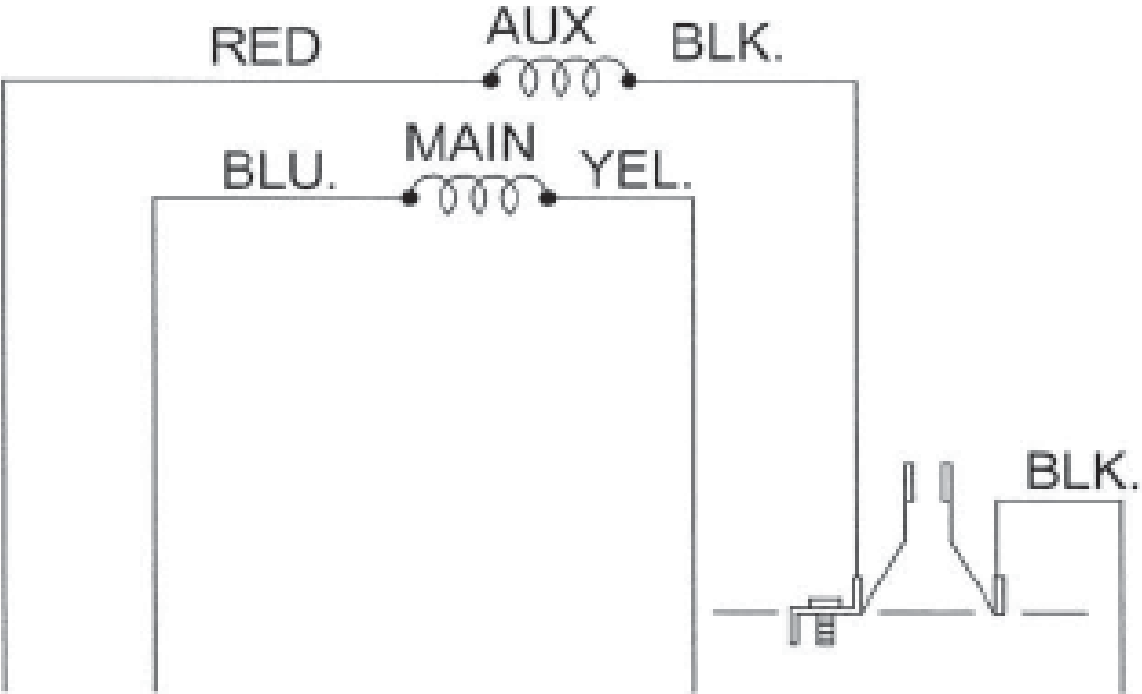
Performance Data



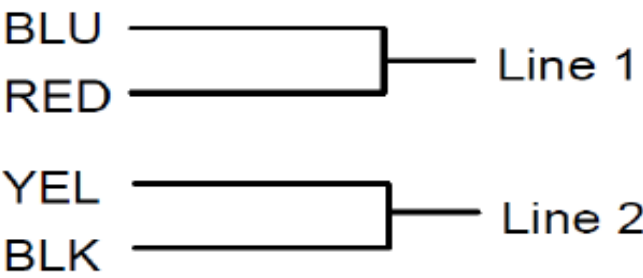
Wiring Diagram



5K596BE	REV. -
---------	-----------



CONNECTIONS



TO REVERSE ROTATION  
INTERCHANGE RED & BLK LEADS

DRAWING NO.	PAGE 1 of 1	REV.
5K596BE		-

**Dayton**<sup>®</sup>Part  
No.**5K596BE****SPLIT PHASE  
MOTOR****HP:** 1/2**PH:** 1**VOLTS:** 115**HZ:** 60**AMPS:** 8.0**FR:** 56**RPM:** 1725**INS CL:** F**DUTY:** CONT**AMB:** 40 °C**SF:** 1.0**SFA:****KVA CODE :** R**ENCL:** TEFC**MTR REF:** S55GYC-8378**THERMALLY PROTECTED:** NONEPROT. CODE: ☐ ☐ MFG. NO. ☐ ☐Disconnect Power Before Making  
Any Electrical Connections or Changes**CONNECTIONS**BLU ☐ — Line 1RED ☐YEL ☐ — Line 2BLK ☐TO REVERSE ROTATION  
INTERCHANGE RED & BLK LEADS

258501



E47479

Mfd for Dayton Electric Mfg. Co., Lake Forest, IL 60045 USA

Made in Mexico