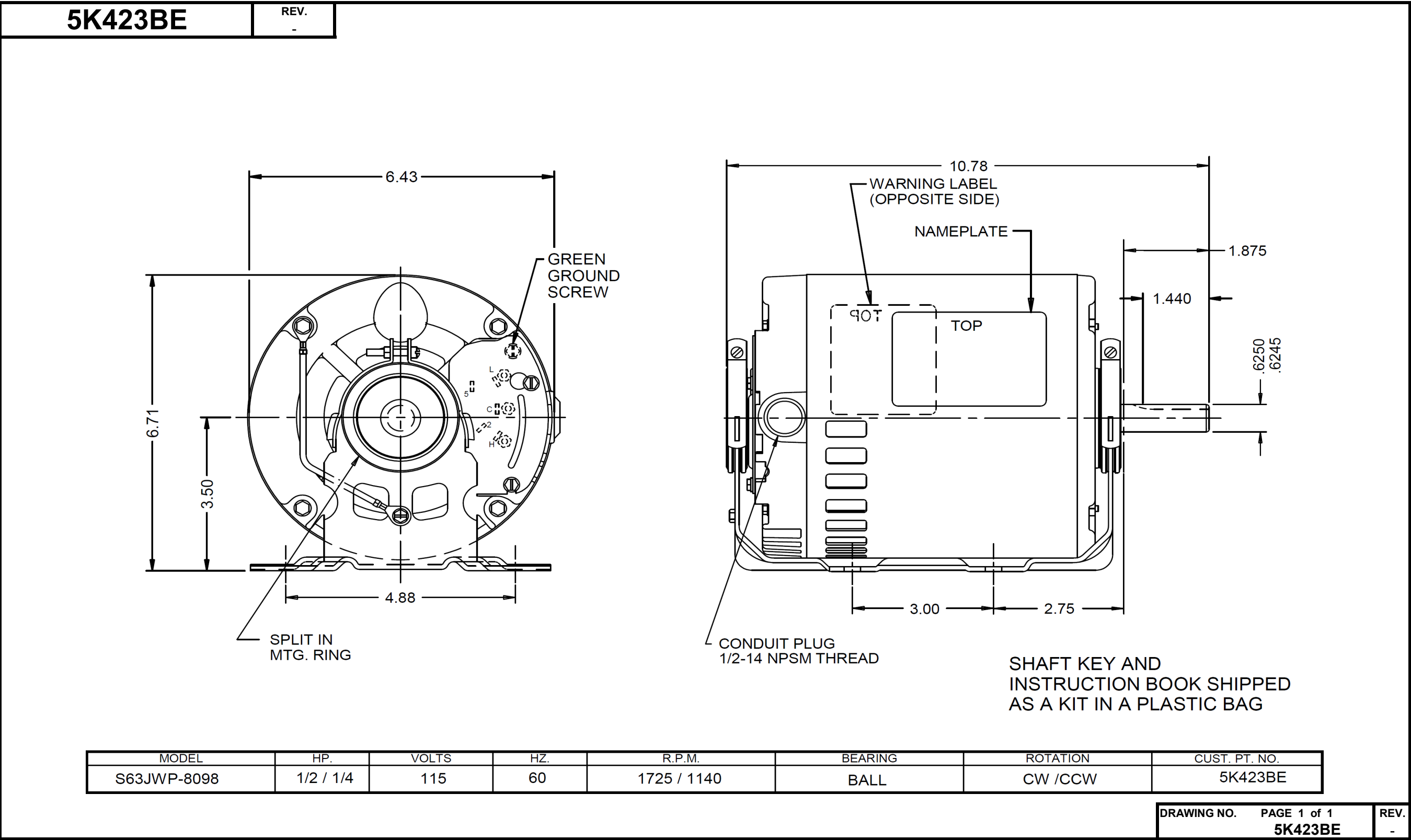


Dimensional Drawing





5K423BE

REV.  
-

SPLIT-PHASE & CAPACITOR START MOTOR PERFORMANCE

HP:	1/2							
Poles:	4							
Ambient (°C):	40							
Altitude (FASL):								
No. of Speeds:	1							
Volts:	115	115						
HZ:	60	60						
Service Factor:	1.25							
Efficiency:	@ Rated Load	62.50						
Power Factor:	@ Rated Load	67.30						
Amps:	@ No Load	6.07						
	@ Rated Load	7.71						
	@ Service Factor	8.67						
	@ Locked Rotor	63.89						
RPM:	@ Rated Load	1735						
Torques:	Breakdown	55.8						
	Locked Rotor	31.24						
	Pull-Up	30.66						
	Rated Load	24.20						
	Service Factor	30.58						
Watts:	Rated Load	597						
KVA Code:					R			
Temperature Rise:	@ Rated Load	43.20						
	@ Service Factor	53.10						
Thermal Protector:	Trip Temp (°C)							
Winding Material:	Start (Auxiliary)				Al			
	Run (Main)				Cu			
Capacitor(s):	Start (MFD / Volts)							
	No. of Start Capacitors							
	Run (MFD / Volts)							
	No. of Run Capacitors							

LOW SPEED PERFORMANCE DATA:

HP:	1/4							
Poles:	6							
Volts:	115	115						
HZ:	60	60						
Efficiency:	@ Rated Load	49.90						
Power Factor:	@ Rated Load	60.50						
Amps:	@ No Load	4.886						
	@ Rated Load	5.37						
	@ Service Factor	5.87						
	@ Locked Rotor							
Torques:	BreakDown	36.8						
	Locked Rotor							
	Pull-Up							
	Rated Load	18.27						
	Service Factor	23.14						
Watts:	@ Rated Load	374						
Temperature Rise:	@ Rated Load	58						
	@ Service Factor	68.6						

DRAWING NO. PAGE 1 of 1  
5K423BE

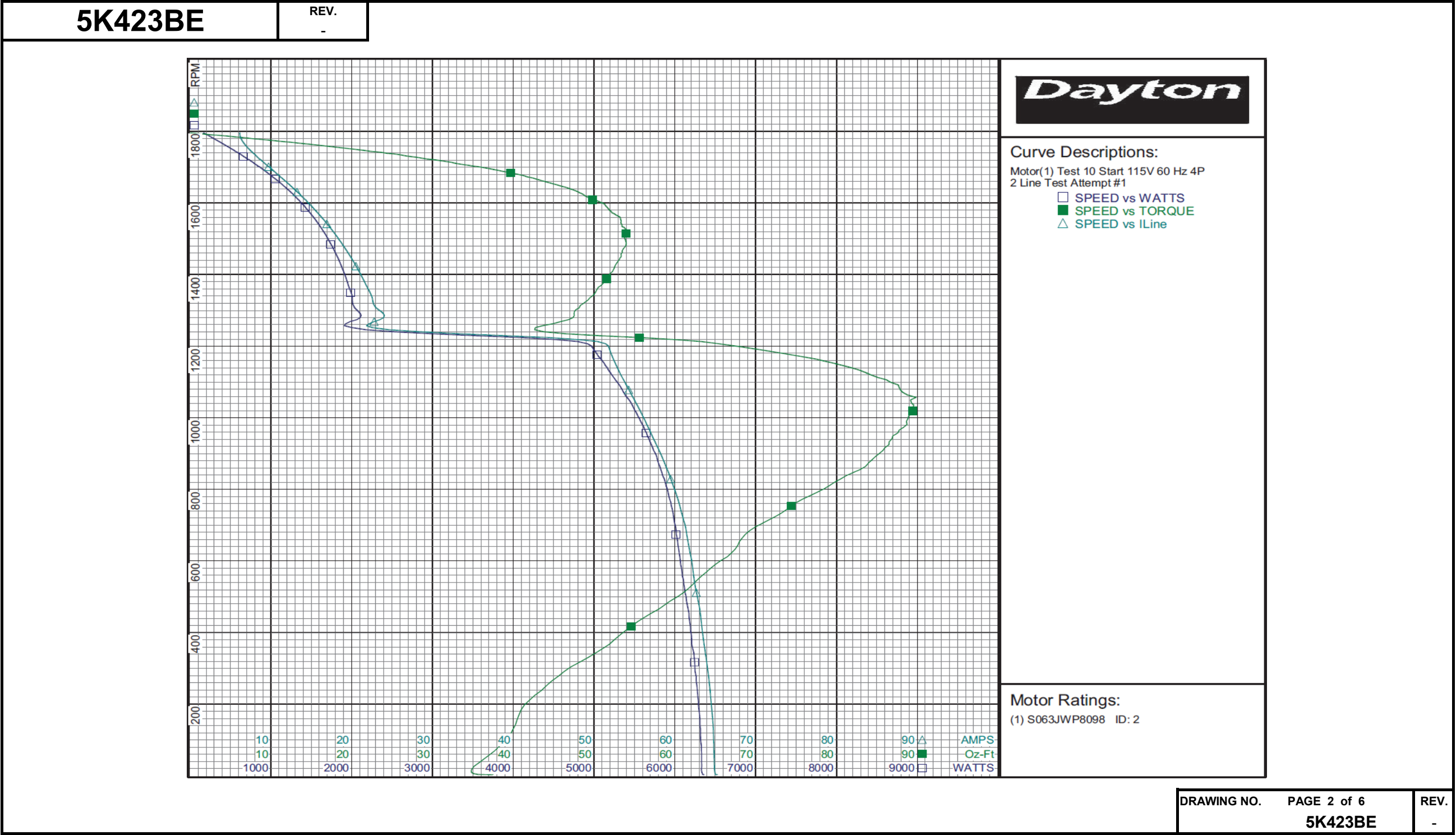
REV.  
-

# Performance Data



5K423BE		REV. -							
Dayton Manufacturing Company									
Motor Description				Test Conditions					
Model: S063JWP8098		Test Type: Start		Run Cap: 0					
Motor ID: 2		Test Number: 10		Start Cap: 0µfd					
Poles: 4/6		Poles: 4							
Volts: 115		Volts: 115		Tested: 3/26/2012 9:13:46 AM					
Frequency: 60		Hz: 60		Tested By: Sharp, Gerald					
HP: 1/2 - 1/4		Rotation:		Gear Ratio: 1:1					
Speed: 1725/1140		Special Cond: 2 Line Test		Bearing Friction: -0.66 Oz-Ft					
Phase: 1		Speed Conn:		Windage Torque: -1.94 Oz-Ft					
Protector: NONE		TestBoard: Amps Performance		Fixture #1					
Special Points		Vline(V)	Iline(A)	Watts	RPM	Tq (Oz-ft)	HP	Eff (%)	PF (%)
		115.0	65.20	6356	3	37.47	0.001	0.0	84.8
PUT OZ-FT		115.0	64.93	6332	10	34.80	0.004	0.0	84.8
		115.0	64.85	6330	39	35.89	0.016	0.2	84.9
		115.0	64.55	6297	184	40.96	0.090	1.1	84.8
		115.0	63.92	6244	317	48.23	0.182	2.2	84.9
		115.0	63.20	6175	442	56.21	0.296	3.6	85.0
		115.0	62.31	6091	557	63.29	0.420	5.1	85.0
		115.0	61.53	6026	664	68.33	0.540	6.7	85.2
		115.0	60.47	5948	763	75.07	0.682	8.6	85.5
		115.0	59.04	5825	855	82.91	0.844	10.8	85.8
		115.0	57.34	5678	941	86.86	0.973	12.8	86.1
		115.0	55.68	5504	1020	89.44	1.086	14.7	86.0
		115.0	53.97	5312	1091	87.63	1.138	16.0	85.6
		115.0	52.49	5104	1157	78.55	1.082	15.8	84.5
		115.0	48.10	4538	1218	60.09	0.871	14.3	82.1
		115.0	23.49	2063	1274	46.83	0.710	25.7	76.4
		115.0	22.57	2006	1329	49.26	0.779	29.0	77.3
		115.0	21.59	1946	1379	51.22	0.841	32.2	78.4
		115.0	20.52	1871	1424	52.57	0.891	35.5	79.3
		115.0	19.38	1786	1466	53.47	0.933	39.0	80.2
		115.0	18.23	1693	1504	53.73	0.962	42.4	80.8
		115.0	17.05	1596	1538	53.44	0.979	45.7	81.4
		115.0	15.87	1492	1570	52.48	0.981	49.0	81.7
		115.0	14.68	1381	1598	51.13	0.973	52.5	81.8
		115.0	13.48	1264	1626	48.43	0.937	55.3	81.5
		115.0	12.30	1142	1650	45.38	0.892	58.3	80.8
		115.0	11.14	1018	1673	41.70	0.830	60.8	79.5
		115.0	10.03	891	1695	37.20	0.751	62.8	77.3
		115.0	8.98	762	1715	31.73	0.648	63.4	73.8
		115.0	8.01	628	1735	25.76	0.532	63.2	68.2
		115.0	7.13	490	1754	18.81	0.393	59.8	59.8
		115.0	6.47	350	1772	11.10	0.234	50.0	47.0
		115.0	6.14	205	1790	2.59	0.055	20.1	29.1
		115.0	6.11	161	1796	0.00	0.000	0.0	23.0

Performance Data



Dayton Electric Mfg. Co. Lake Forest, IL 60045 USA

# Performance Data



5K423BE		REV.						
		-						
Dayton Manufacturing Company								
Motor Description				Test Conditions				
Model: S063JWP8098		Test Type: Run		Run Cap: 0				
Motor ID: 2		Test Number: 4		Start Cap: 0µfd				
Poles: 4/6		Poles: 4						
Volts: 115		Volts: 115		Tested: 3/26/2012 9:04:57 AM				
Frequency: 60		Hz: 60		Tested By: Sharp, Gerald				
HP: 1/2 - 1/4		Rotation:		Gear Ratio: 1:1				
Speed: 1725/1140		Special Cond:		Bearing Friction: -0.62 Oz-Ft				
Phase: 1		Speed Conn:		Windage Torque: -2.00 Oz-Ft				
Protector: NONE		TestBoard:		Amps Performance		Fixture #1		
Special Points	Vline(V)	Iline(A)	Watts	RPM	Tq (Oz-ft)	HP	Eff (%)	PF (%)
	115.0	5.81	151	1789	0.00	0.000	0.0	22.6
	115.0	6.10	312	1770	9.70	0.204	48.8	44.5
	115.0	6.88	482	1750	19.11	0.398	61.6	60.9
0.5 HP	115.0	7.53	583	1737	24.18	0.500	63.9	67.4
24.3 OZ-FT	115.0	7.55	586	1736	24.30	0.502	64.0	67.5
	115.0	7.87	629	1731	26.55	0.547	64.9	69.6
1725 RPM	115.0	8.15	669	1725	28.43	0.584	65.1	71.4
0.625 HP	115.0	8.52	720	1718	30.56	0.625	64.7	73.5
30.4 OZ-FT	115.0	8.49	716	1719	30.40	0.622	64.8	73.4
	115.0	8.97	776	1711	33.06	0.673	64.7	75.2
	115.0	10.15	917	1689	38.88	0.782	63.6	78.6
	115.0	11.39	1056	1666	44.05	0.874	61.7	80.6
	115.0	12.68	1192	1642	48.01	0.938	58.7	81.7
	115.0	13.95	1317	1615	51.59	0.992	56.2	82.1
	115.0	15.22	1437	1587	53.68	1.014	52.6	82.1
	115.0	16.49	1553	1556	54.69	1.013	48.6	81.9
BDT OZ-FT	115.0	17.35	1627	1532	55.49	1.012	46.4	81.5
	115.0	17.73	1659	1522	55.34	1.003	45.1	81.4
	115.0	18.93	1754	1486	55.04	0.974	41.4	80.6
	115.0	20.09	1844	1445	54.57	0.939	38.0	79.8
	115.0	21.19	1919	1402	53.20	0.888	34.5	78.8
	115.0	22.24	1989	1356	51.41	0.830	31.1	77.8
	115.0	23.23	2049	1305	48.67	0.756	27.5	76.7
	115.0	24.17	2100	1249	45.51	0.677	24.1	75.5
	115.0	25.03	2144	1189	41.97	0.594	20.7	74.5
	115.0	25.83	2182	1124	38.02	0.509	17.4	73.5
	115.0	26.54	2213	1054	33.67	0.423	14.2	72.5
	115.0	27.18	2232	979	29.17	0.340	11.4	71.4
	115.0	27.77	2254	897	24.72	0.264	8.7	70.6
	115.0	28.28	2265	810	19.48	0.188	6.2	69.6
	115.0	28.73	2268	717	14.46	0.123	4.1	68.6
	115.0	60.15	5632	621	58.67	0.434	5.7	81.4
	115.0	63.76	6238	517	62.43	0.384	4.6	85.1
	115.0	64.36	6301	400	54.28	0.259	3.1	85.1
	115.0	64.44	6301	277	46.32	0.153	1.8	85.0
	115.0	64.44	6304	147	39.64	0.069	0.8	85.1

DRAWING NO. 5K423BE

PAGE 3 of 6

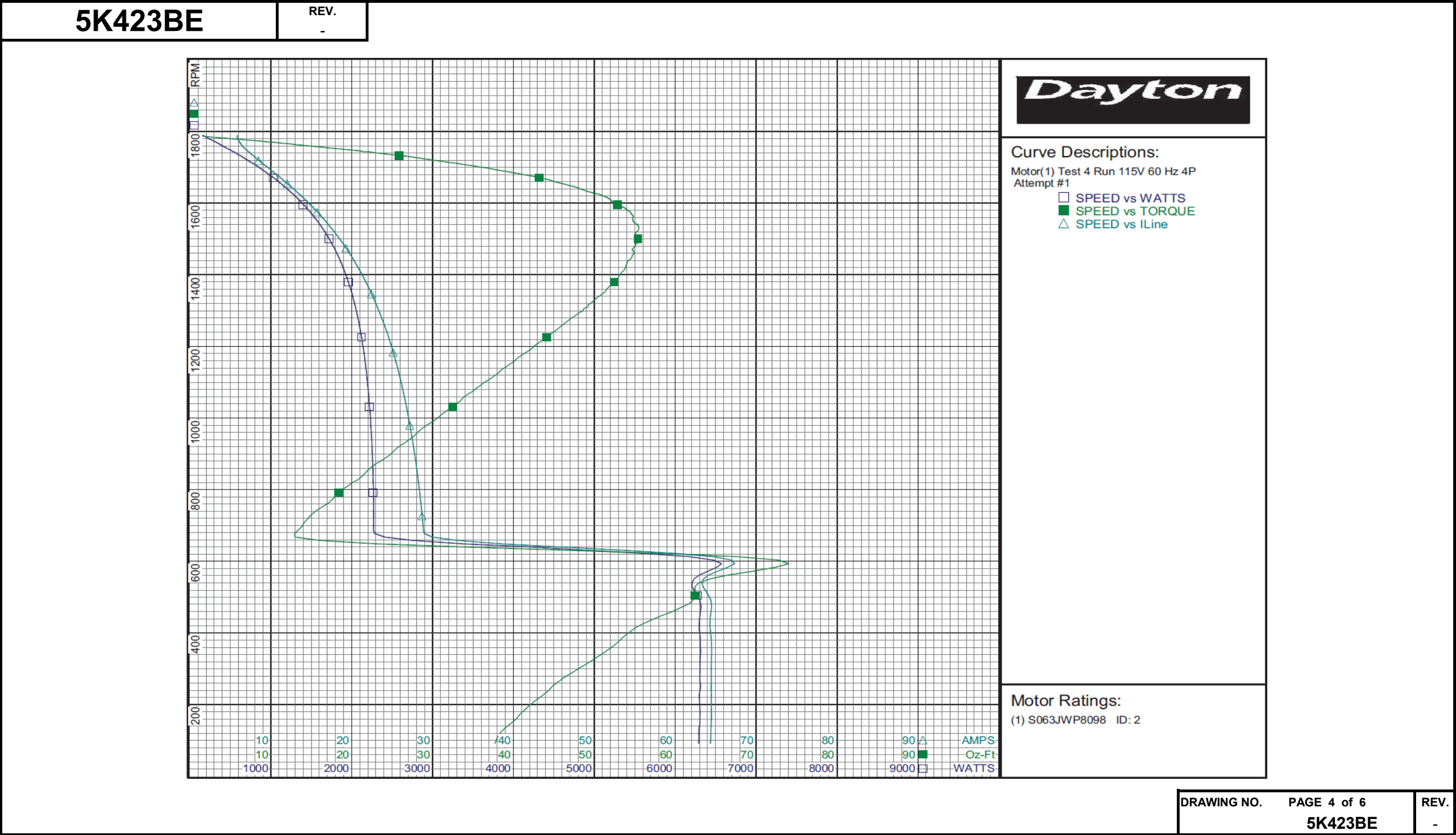
REV. -

DRAWING NO.	PAGE 3 of 6	REV.
5K423BE		-

Dayton Electric Mfg. Co. Lake Forest, IL 60045 USA



Performance Data



# Performance Data



5K423BE		REV. -						
Dayton Manufacturing Company								
Motor Description				Test Conditions				
Model: S063JWP8098		Test Type: Run		Run Cap: 0				
Motor ID: 2		Test Number: 12		Start Cap: 0µfd				
Poles: 4/6		Poles: 6		Tested: 3/26/2012 9:03:44 AM				
Volts: 115		Volts: 115		Tested By: Sharp, Gerald				
Frequency: 60		Hz: 60		Gear Ratio: 1:1				
HP: 1/2 - 1/4		Rotation:		Bearing Friction: -0.66 Oz-Ft				
Speed: 1725/1140		Special Cond:		Windage Torque: -1.83 Oz-Ft				
Phase: 1		Speed Conn:						
Protector: NONE		TestBoard:		Amps Performance Fixture #1				
Special Points	Vline(V)	Iline(A)	Watts	RPM	Tq(Oz-ft)	HP	Eff (%)	PF (%)
	115.0	4.70	145	1191	0.00	0.000	0.0	26.8
	115.0	4.74	217	1179	6.27	0.088	30.2	39.8
0.167 HP	115.0	4.95	289	1166	12.03	0.167	43.1	50.7
	115.0	4.96	290	1166	12.12	0.168	43.3	50.8
0.209 HP	115.0	5.14	330	1158	15.15	0.209	47.3	55.8
	115.0	5.30	362	1152	17.45	0.239	49.3	59.5
0.25 HP	115.0	5.37	374	1150	18.27	0.250	49.9	60.5
18.2 OZ-FT	115.0	5.37	372	1150	18.20	0.249	49.9	60.4
1140 RPM	115.0	5.69	425	1140	21.40	0.290	51.0	64.9
	115.0	5.75	434	1138	22.11	0.300	51.5	65.5
22.8 OZ-FT	115.0	5.83	446	1136	22.80	0.308	51.6	66.5
0.312 HP	115.0	5.87	451	1135	23.10	0.312	51.6	66.8
	115.0	6.23	501	1123	25.92	0.347	51.6	70.0
	115.0	6.74	568	1108	29.13	0.384	50.5	73.2
	115.0	7.28	631	1092	31.84	0.414	48.9	75.4
	115.0	7.84	693	1075	33.90	0.434	46.7	76.9
	115.0	8.41	754	1055	35.51	0.446	44.1	78.0
	115.0	8.98	812	1034	36.40	0.448	41.2	78.6
	115.0	9.56	867	1011	36.64	0.441	37.9	78.8
BDT OZ-FT	115.0	9.72	882	1004	36.76	0.439	37.2	78.9
	115.0	10.11	918	985	36.56	0.429	34.9	78.9
	115.0	10.65	965	960	35.74	0.408	31.6	78.8
	115.0	11.16	1008	930	34.57	0.383	28.3	78.5
	115.0	11.66	1046	898	32.93	0.352	25.1	78.0
	115.0	12.12	1083	863	31.01	0.319	22.0	77.7
	115.0	12.55	1113	826	28.76	0.283	18.9	77.1
	115.0	12.95	1141	785	26.53	0.248	16.2	76.6
	115.0	13.32	1165	741	23.70	0.209	13.4	76.0
	115.0	23.10	2164	694	21.97	0.181	6.3	81.5
	115.0	63.83	6254	651	68.86	0.534	6.4	85.2
	115.0	64.48	6302	594	66.54	0.470	5.6	85.0
	115.0	64.40	6286	533	63.66	0.404	4.8	84.9
	115.0	64.34	6281	469	59.16	0.330	3.9	84.9
	115.0	64.28	6281	399	54.49	0.259	3.1	85.0
	115.0	64.30	6273	327	49.77	0.194	2.3	84.8
	115.0	64.18	6256	249	44.95	0.133	1.6	84.8
	115.0	64.10	6248	166	40.28	0.080	1.0	84.8

DRAWING NO. PAGE 5 of 6

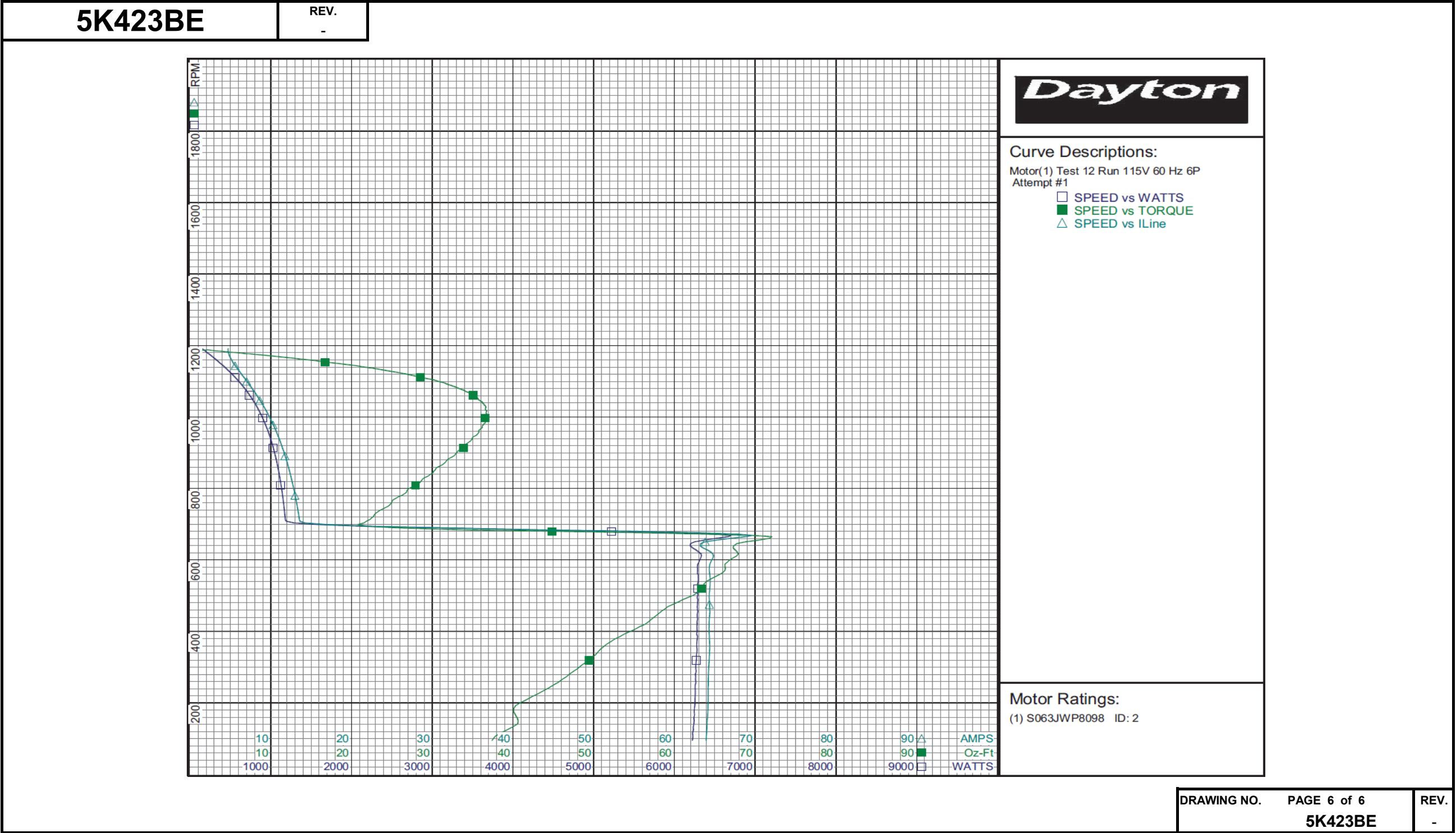
5K423BE

REV.  
-

DRAWING NO.	PAGE 5 of 6	REV.
5K423BE		-

Dayton Electric Mfg. Co. Lake Forest, IL 60045 USA

Performance Data



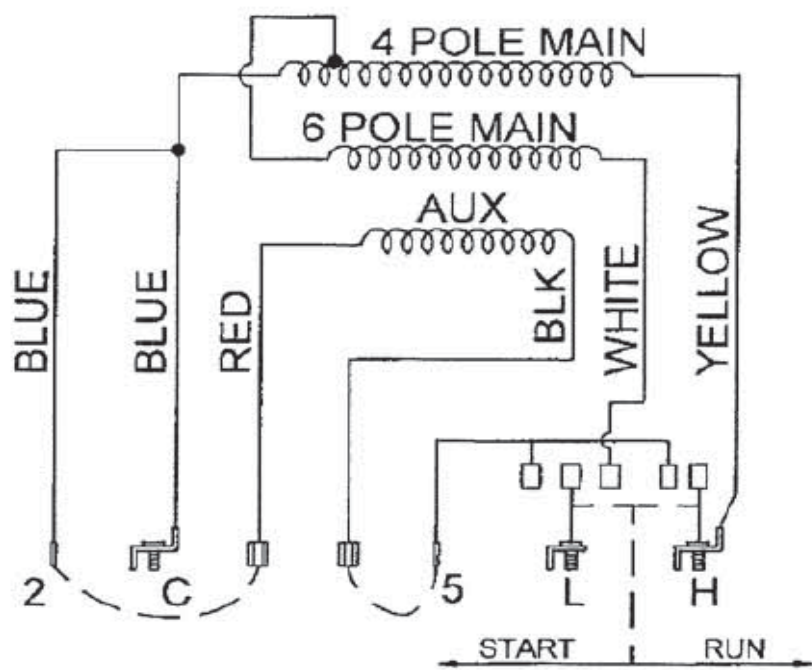


# Wiring Diagram



5K423BE

REV.  
0



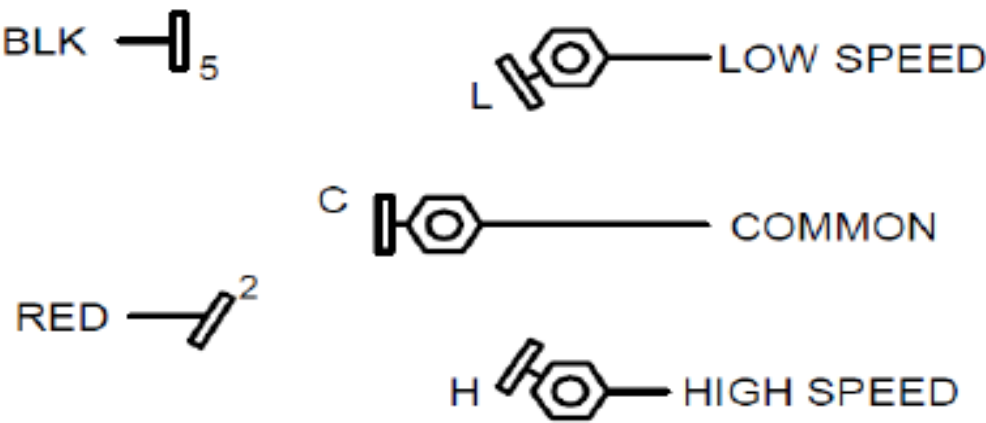
FOR CCW ROTATION LEAD END

BLACK ON 5  
RED ON 2

FOR CW ROTATION LEAD END

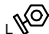


BLACK ON 2  
RED ON 5

## CONNECTIONS



TO REVERSE ROTATION  
INTERCHANGE RED & BLK LEADS

DRAWING NO.	PAGE 1 of 1	REV.
5K423BE		0

**Dayton**® Part  
No**5K423BE****SPLIT PHASE  
MOTOR****HP:** 1/2 / 1/4**VOLTS:** 115**AMPS:** 7.5 / 5.4**RPM:** 1725/1140**DUTY:** CONT**SF:** 1.25**KVA CODE:** R**MTR REF:** S63JWP-8098**THERMALLY PROTECTED:** NONEPROT. CODE ☐ ☐ MFG. NO. ☐ ☐**PH:** 1**HZ:** 60**FR:** 56**INS CL:** B**AMB:** 40 °C**SFA:** 8.5 / 5.9**ENCL:** ODPDisconnect Power Before Making  
Any Electrical Connections or Changes**CONNECTIONS**BLK —  5 — LOW SPEEDC  — COMMONRED —  2H  — HIGH SPEEDTO REVERSE ROTATION  
INTERCHANGE RED & BLK LEADS

258501



E47479

Mfd for Dayton Electric Mfg. Co., Lake Forest, IL 60045 USA

Made in Mexico