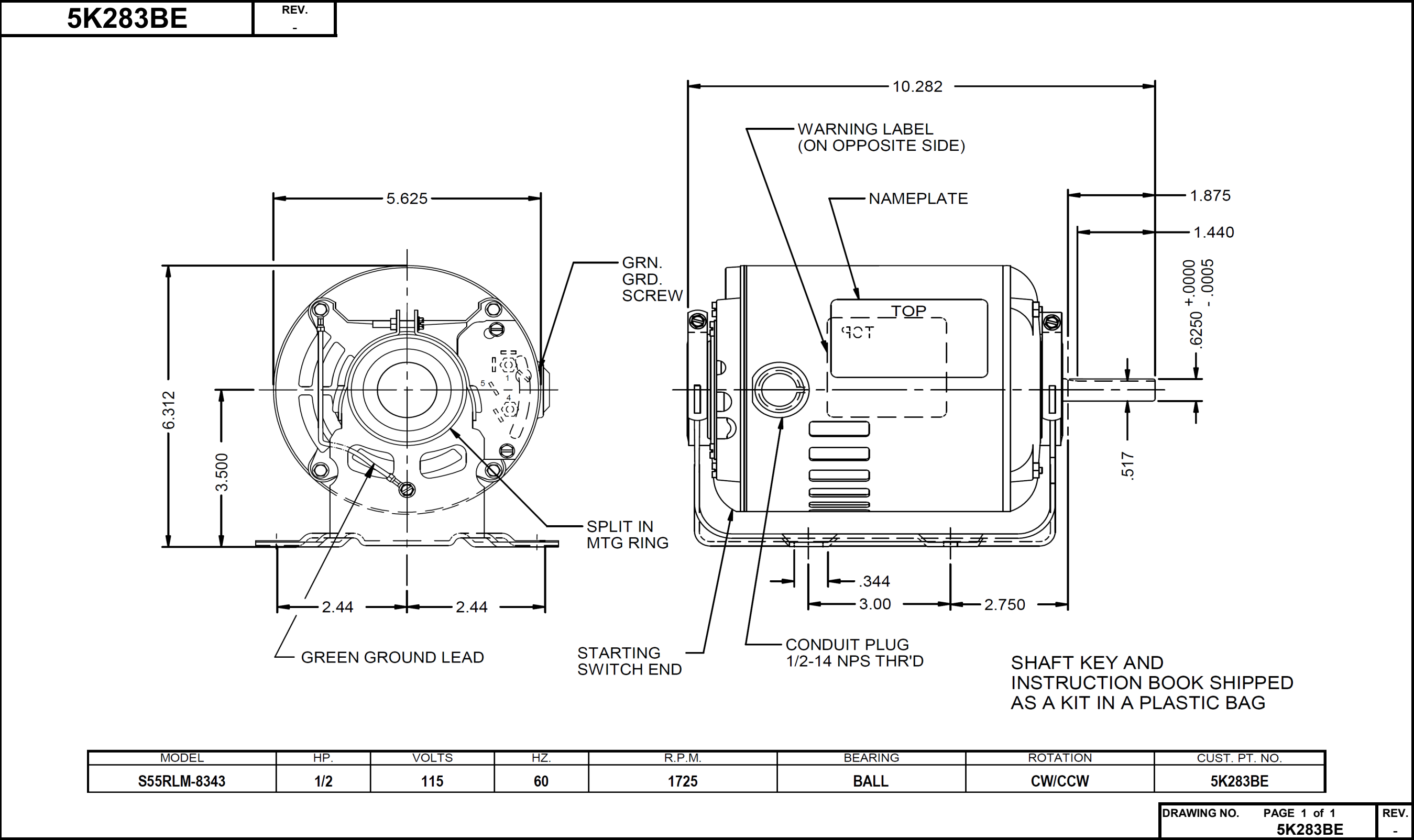


Dimensional Drawing



Dayton Electric Mfg. Co. Lake Forest, IL 60045 USA



5K283BE		REV. -							
SPLIT-PHASE & CAPACITOR START MOTOR PERFORMANCE									
HP:	1/2								
Poles:	4								
Ambient (°C):	40								
Altitude (FASL):									
No. of Speeds:	1								
Volts:	115	115							
HZ:	60	60							
Service Factor:	1.25								
Efficiency:	@ Rated Load	58.00							
Power Factor:	@ Rated Load	60.60							
Amps:	@ No Load	8.38							
	@ Rated Load	9.22							
	@ Service Factor	9.79							
	@ Locked Rotor	63.37							
RPM:	@ Rated Load	1748							
Torques:	Breakdown	66.2							
	Locked Rotor	42.34							
	Pull-Up	41.13							
	Rated Load	24.02							
	Service Factor	30.25							
Watts:	Rated Load	643							
KVA Code:					R				
Temperature Rise:	@ Rated Load	79.20							
	@ Service Factor	93.80							
Thermal Protector:	Trip Temp (°C)	N/A							
Winding Material:	Start (Auxiliary)				Cu				
	Run (Main)				Al				
Capacitor(s):	Start (MFD / Volts)								
	No. of Start Capacitors								
	Run (MFD / Volts)								
	No. of Run Capacitors								
LOW SPEED PERFORMANCE DATA:									
HP:									
Poles:									
Volts:									
HZ:									
Efficiency:	@ Rated Load								
Power Factor:	@ Rated Load								
Amps:	@ No Load								
	@ Rated Load								
	@ Service Factor								
	@ Locked Rotor								
Torques:	BreakDown								
	Locked Rotor								
	Pull-Up								
	Rated Load								
	Service Factor								
Watts:	@ Rated Load								
Temperature Rise:	@ Rated Load								
	@ Service Factor								
		DRAWING NO. PAGE 1 of 1					REV.		
		5K283BE					-		

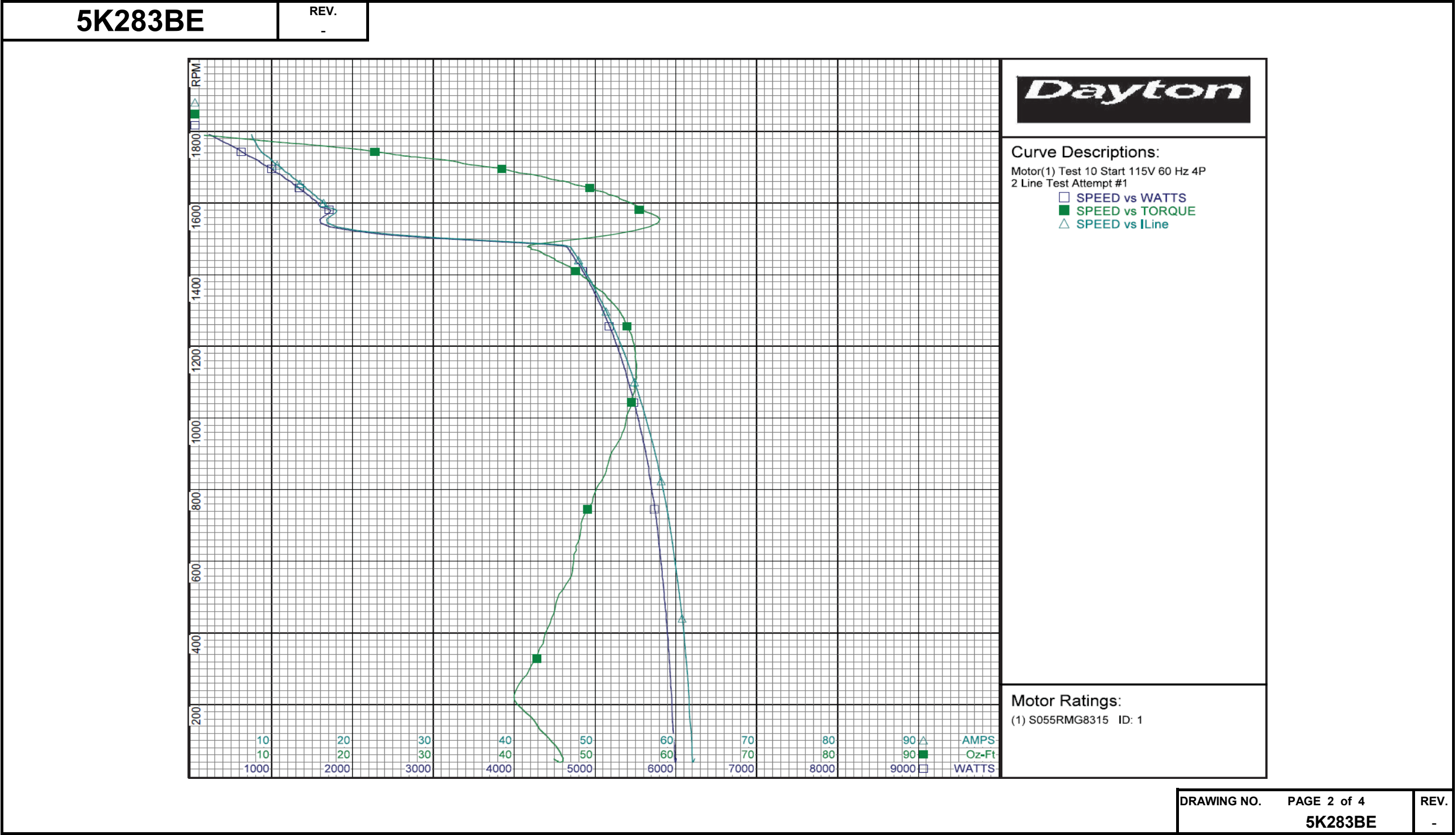
Performance Data



5K283BE		REV. -								
Dayton Manufacturing Company										
Motor Description					Test Conditions					
Model:		S055RMG8315			Test Type:		Start		Run Cap: 0	
Motor ID:		1			Test Number:		10		Start Cap: 0μfd	
Poles:		4			Poles:		4			
Volts:		115			Volts:		115		Tested: 3/22/2012 3:47:26 PM	
Frequency:		60			Hz:		60			
HP:		1/2			Rotation:				Gear Ratio: 1:1	
Speed:		1725			Special Cond:		2 Line Test		Bearing Friction: -0.39 Oz-Ft	
Phase:		1			Speed Conn:				Windage Torque: -1.74 Oz-Ft	
Protector:		NONE			TestBoard:		Amps Performance		Fixture #4	
Special Points		Vline	Iline	Watts	Speed	Tq(Oz-ft)	HP	Eff (%)	PF (%)	
		115.0	62.27	6001	47	44.91	0.025	0.3	83.8	
		115.0	62.00	5982	57	45.86	0.031	0.4	83.9	
		115.0	61.66	5952	177	41.46	0.087	1.1	83.9	
PUT OZ-FT		115.0	61.61	5946	225	39.97	0.107	1.3	83.9	
		115.0	61.24	5915	328	42.78	0.167	2.1	84.0	
		115.0	60.57	5864	482	45.14	0.259	3.3	84.2	
		115.0	59.75	5805	619	47.38	0.349	4.5	84.5	
		115.0	58.97	5747	736	48.83	0.428	5.6	84.7	
		115.0	58.01	5667	842	51.22	0.514	6.8	85.0	
		115.0	56.97	5589	941	53.10	0.595	7.9	85.3	
		115.0	55.89	5498	1029	54.38	0.666	9.0	85.5	
		115.0	54.77	5401	1107	55.05	0.726	10.0	85.8	
		115.0	53.66	5312	1177	54.98	0.771	10.8	86.1	
		115.0	52.52	5208	1240	54.31	0.802	11.5	86.2	
		115.0	51.37	5100	1298	53.01	0.819	12.0	86.3	
		115.0	50.23	4990	1348	51.08	0.820	12.3	86.4	
		115.0	49.13	4887	1394	48.50	0.805	12.3	86.5	
		115.0	48.08	4765	1437	45.38	0.776	12.2	86.2	
		115.0	47.04	4662	1475	42.08	0.739	11.8	86.2	
		115.0	16.79	1596	1554	58.02	1.073	50.2	82.7	
		115.0	16.59	1582	1594	54.99	1.043	49.2	82.9	
		115.0	15.53	1477	1617	52.73	1.015	51.3	82.7	
		115.0	14.69	1384	1634	50.42	0.981	52.9	81.9	
		115.0	13.81	1286	1650	47.66	0.936	54.3	80.9	
		115.0	12.83	1173	1667	44.44	0.882	56.1	79.5	
		115.0	11.92	1063	1684	40.49	0.812	56.9	77.5	
		115.0	11.00	949	1701	36.52	0.740	58.1	75.1	
		115.0	10.07	837	1717	32.22	0.659	58.7	72.3	
		115.0	9.33	708	1731	26.29	0.542	57.1	66.0	
		115.0	8.51	592	1749	20.98	0.437	55.1	60.4	
		115.0	8.11	465	1764	14.02	0.294	47.2	49.8	
		115.0	7.71	332	1779	6.65	0.141	31.6	37.5	
		115.0	7.48	218	1791	0.00	0.000	0.0	25.4	
								DRAWING NO.	PAGE 1 of 4	REV.
								5K283BE		-

Dayton Electric Mfg. Co. Lake Forest, IL 60045 USA

Performance Data



Dayton Electric Mfg. Co. Lake Forest, IL 60045 USA

Performance Data



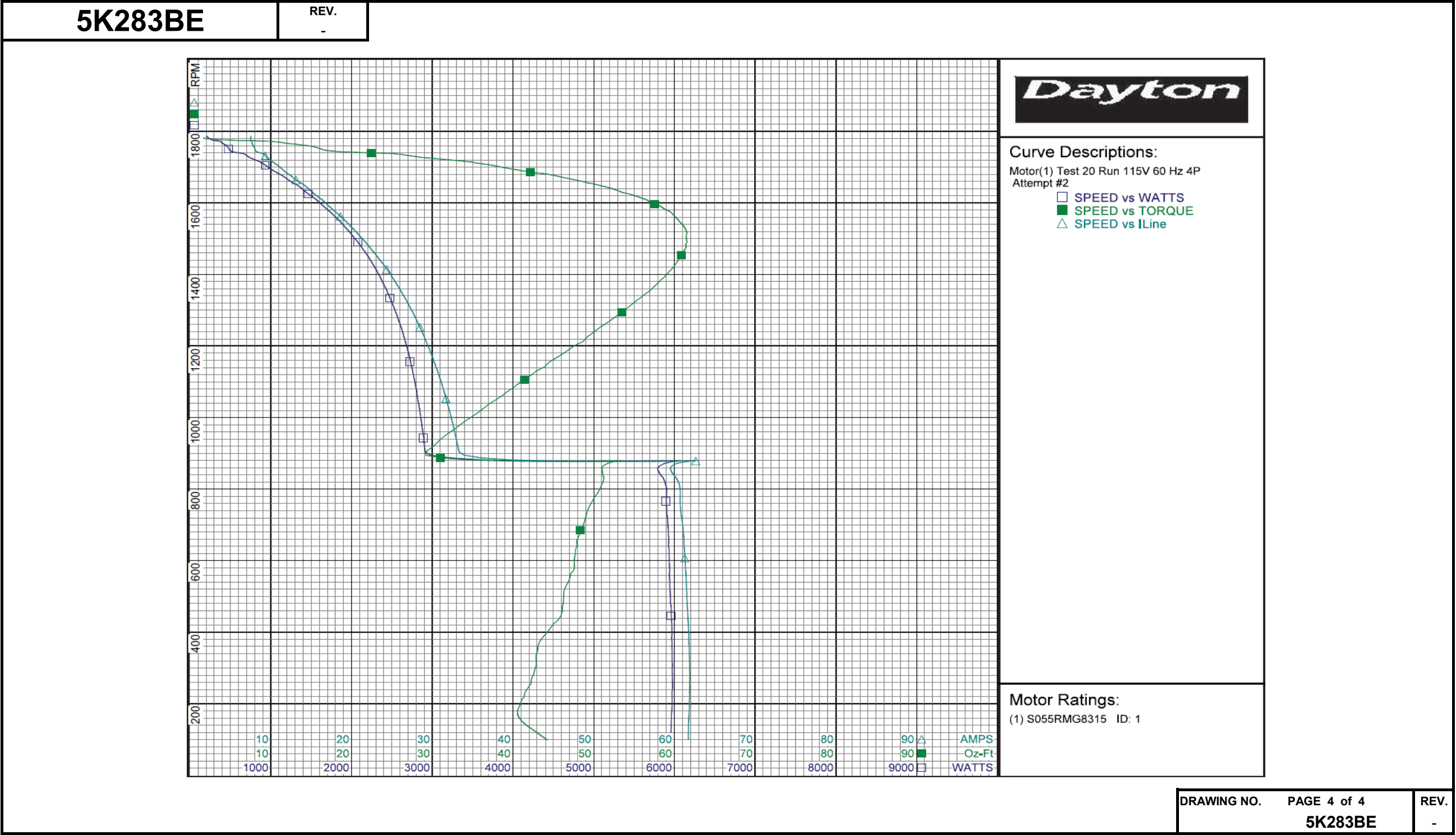
5K283BE		REV. -						
Dayton Manufacturing Company								
Motor Description				Test Conditions				
Model:	S055RMG8315			Test Type:	Run		Run Cap:	0
Motor ID:	1			Test Number:	20		Start Cap:	0µfd
Poles:	4			Poles:	4			
Volts:	115			Volts:	115		Tested:	3/22/2012 3:45:42 PM
Frequency:	60			Hz:	60			
HP:	1/2			Rotation:			Gear Ratio:	1:1
Speed:	1725			Special Cond:			Bearing Friction:	-0.34 Oz-Ft
Phase:	1			Speed Conn:			Windage Torque:	-1.73 Oz-Ft
Protector:	NONE			TestBoard:	Amps Performance		Fixture #4	
Special Points	Vline	Iline	Watts	Speed	Tq (Oz-ft)	HP	Eff (%)	PF (%)
	115.0	7.54	201	1786	0.00	0.000	0.0	23.2
	115.0	7.47	282	1775	5.03	0.106	28.1	32.8
	115.0	7.62	385	1769	11.03	0.232	45.0	44.0
	115.0	7.96	472	1754	15.79	0.330	52.1	51.6
	115.0	8.75	621	1739	23.58	0.488	58.6	61.7
0.5 HP	115.0	8.84	635	1738	24.16	0.500	58.8	62.4
24.4 OZ-FT	115.0	8.88	640	1738	24.40	0.505	58.8	62.7
	115.0	9.51	745	1725	29.42	0.604	60.5	68.2
1725 RPM	115.0	9.53	750	1725	29.66	0.609	60.6	68.5
30 OZ-FT	115.0	9.56	757	1724	30.00	0.616	60.7	68.9
	115.0	10.55	901	1709	36.09	0.734	60.8	74.3
	115.0	11.77	1056	1686	42.20	0.847	59.8	78.0
	115.0	13.64	1271	1655	49.26	0.971	57.0	81.1
	115.0	14.81	1400	1636	52.72	1.027	54.7	82.2
	115.0	16.69	1598	1602	56.96	1.086	50.7	83.3
	115.0	18.84	1813	1557	60.25	1.117	46.0	83.7
	115.0	20.83	1997	1512	61.50	1.107	41.3	83.4
BDT OZ-FT	115.0	21.67	2074	1490	61.58	1.093	39.3	83.2
	115.0	22.63	2159	1464	61.12	1.065	36.8	82.9
	115.0	24.35	2300	1414	59.61	1.004	32.6	82.1
	115.0	25.82	2414	1364	57.40	0.932	28.8	81.3
	115.0	27.14	2517	1311	54.44	0.850	25.2	80.6
	115.0	28.33	2602	1258	51.21	0.767	22.0	79.9
	115.0	29.49	2682	1198	47.46	0.677	18.8	79.1
	115.0	30.56	2751	1135	43.32	0.585	15.9	78.3
	115.0	31.50	2807	1069	39.07	0.497	13.2	77.5
	115.0	32.34	2857	998	34.68	0.412	10.8	76.8
	115.0	33.07	2896	927	30.50	0.337	8.7	76.2
	115.0	56.41	5327	877	48.57	0.507	7.1	82.1
	115.0	59.58	5802	849	51.06	0.516	6.6	84.7
	115.0	60.71	5897	755	49.52	0.445	5.6	84.5
	115.0	61.16	5928	653	47.87	0.372	4.7	84.3
	115.0	61.43	5938	552	47.04	0.309	3.9	84.1
	115.0	61.65	5959	446	45.92	0.244	3.1	84.0
	115.0	61.83	5971	334	42.83	0.171	2.1	84.0
	115.0	61.85	5969	219	41.35	0.108	1.3	83.9
	115.0	61.71	5957	98	44.25	0.052	0.6	83.9

DRAWING NO.	PAGE 3 of 4	REV.
5K283BE		-

DRAWING NO.	PAGE 3 of 4	REV.
5K283BE		-

Dayton Electric Mfg. Co. Lake Forest, IL 60045 USA

Performance Data



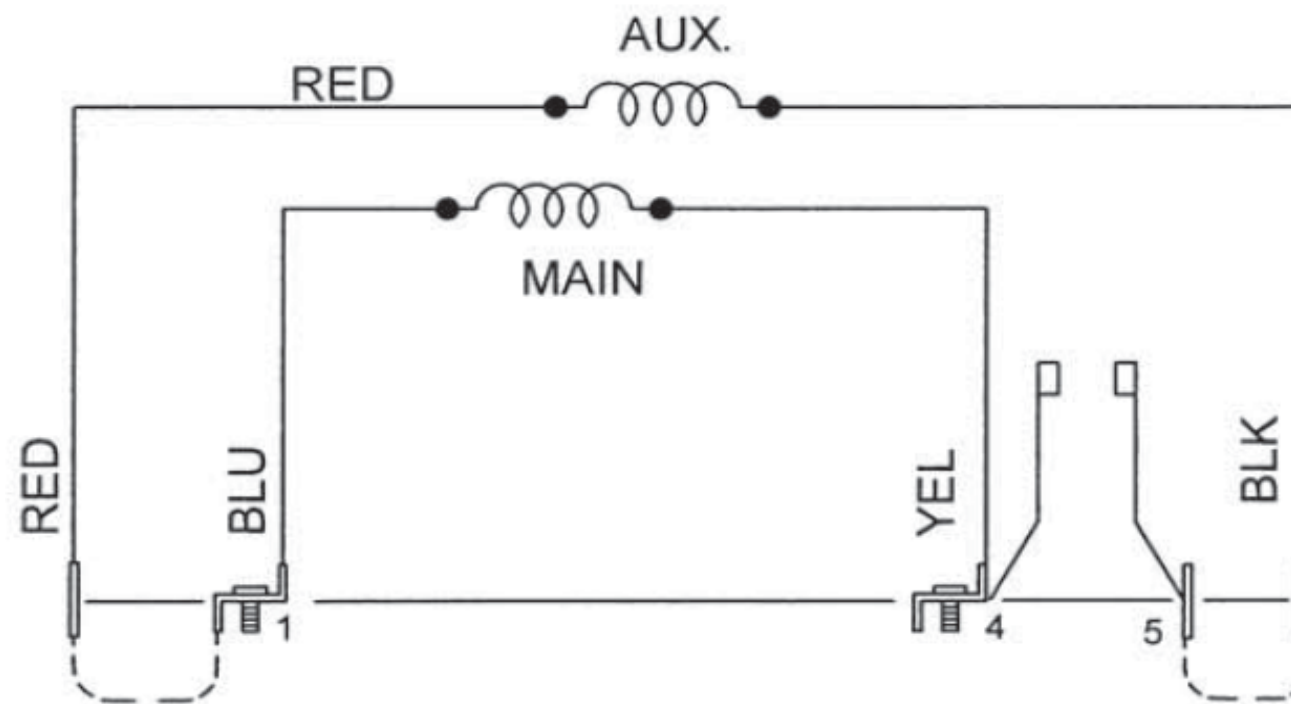
Dayton Electric Mfg. Co. Lake Forest, IL 60045 USA

Wiring Diagram



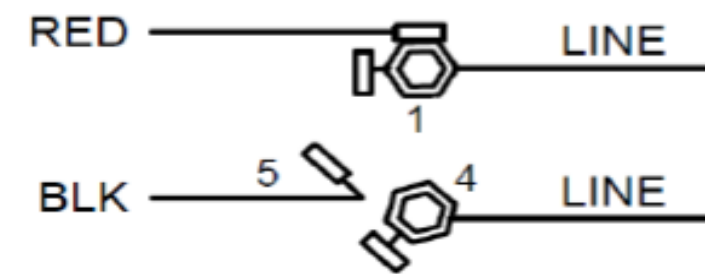
5K283BE

REV.



LINE CONN: UNGROUNDED-1; GROUNDED-4
ROTATION SHOWN: C.CW. SW. END. TO REV.
INTERCHANGE RED & BLK. LEADS.

CONNECTIONS



TO REVERSE ROTATION
INTERCHANGE RED & BLK LEADS

DRAWING NO.	PAGE 1 of 1	REV.
	5K283BE	-

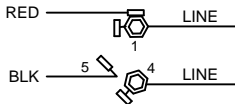
Dayton Electric Mfg. Co. Lake Forest, IL 60045 USA

Dayton[®]Part No **5K283BE****SPLIT PHASE
MOTOR****HP:** 1/2**PH:** 1**VOLTS:** 115**HZ:** 60**AMPS:** 8.9**FR:** 56**RPM:** 1725**INS CL:** F**DUTY:** CONT**AMB:** 40 °C**SF:** 1.25**SFA:** 9.6**KVA CODE :** R**ENCL:** ODP**MTR REF:** S55RLM-8343**THERMALLY PROTECTED:** NONEMFG. NO.  

258501



E47479

**Disconnect Power Before Making
Any Electrical Connections or Changes****CONNECTIONS****TO REVERSE ROTATION
INTERCHANGE RED & BLK LEADS**

Mfd for Dayton Electric Mfg. Co., Lake Forest, IL 60045 USA

Made in Mexico