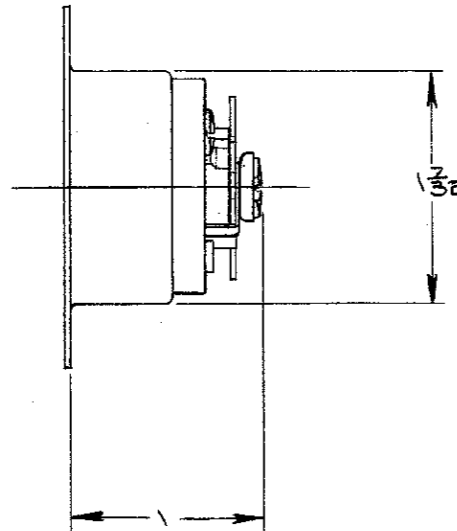
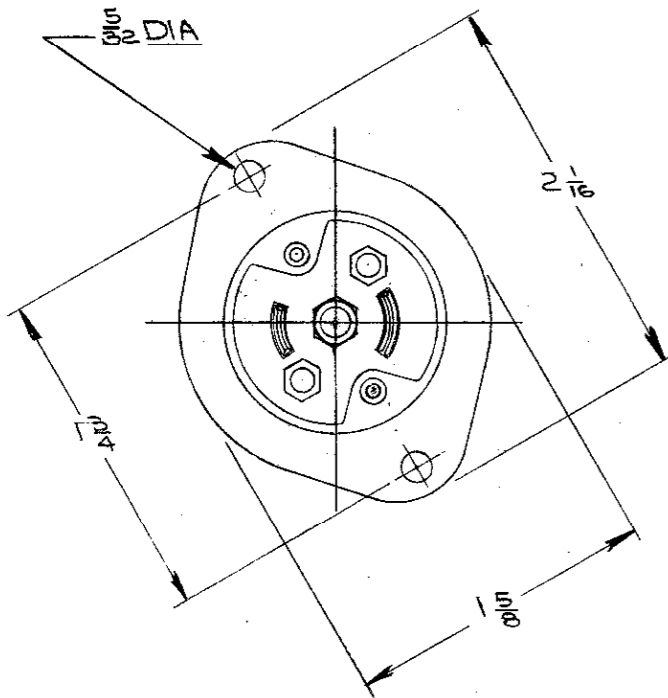


M-3896

LIST OF PARTS

DESCRIPTION	MATERIAL	FINISH
BASE	POLYESTER	BLACK
GRD. CONTACT SLEEVE	BRASS	
CONTACT BLADES	.060 BRASS	1-WHITE
BINDING SCREWS	BRASS	1-WHITE
HEX HD. BINDING SCREW	BRASS	GREEN
CASING	.025 BRASS	POL. NICKEL
INSULATOR	.031 NYLON	NATURAL
CUPPED WASHER	.025 BRASS	
SHUNT	.012 BRASS	
RIVETS	BRASS	



2	PARTS LIST: BASE MATERIAL POLYESTER WAS PHENOLIC; CAT. NO. HBL7595 WAS 7595; REMOVED MARKING FROM FRONT VIEW PER DCN 22625 RM DJP	10/3/17
	BASE MATL. WAS BAKELITE INSULATOR. MATL. WAS FIBER. RED FINISH SHUNT WAS .015	3-5-90 P.L. CSC
REVISIONS		DATE

TOLERANCES UNLESS OTHERWISE SPECIFIED
 FRACTIONS ± 1/64
 DECIMALS ± .005
 ANGLES ± 2°

HARVEY HUBBELL, INC.

SHELTON CONN.

DR. BY RAR APP. BY _____
 TR. BY _____ SCALE FULL
 CHK'D. BY J.C.H. DATE 5-18-62