

RESCUE® Select Pro™

Motor Installation and Configuration Guide

For technical assistance or questions
related to your RESCUE® Select Pro™ Motor
call the Technical Hotline:
1-888-540-5540

Read the entire manual prior to installation and operation
of the RESCUE® Select Pro™ Motor.
Follow all instructions contained herein.

Nidec

— All for dreams



Table of Contents

Important Safety Information	1
Product Overview	3
Key Features and Benefits	3
Specifications	3
Motor Dimensions.....	3
General Information.....	4
Materials Enclosed	4
Initial Inspection.....	4
Installing the Motor	5
STEP 1: Turn OFF Electrical Power	5
STEP 2: Remove the Blower Housing from the HVAC Equipment	5
STEP 3: Locate and Verify the Connector.....	6
STEP 4: Remove the Original ECM Motor	6
STEP 5: Install the Replacement Motor	7
STEP 6: Install the Replacement Motor in the Air Handling Unit.....	8
STEP 7: Reinstall the Blower Assembly in the HVAC System	8
STEP 8: The Motor Is Ready for Operation!.....	9
Motor Start-Up and Operation	9
Operating Mode Checklist	10
Final Checks.....	10
Maintenance	11
Troubleshooting.....	12
FCC Certification / Digital Modulation.....	13
Warranty Information	14

Important Safety Information



- Read all instructions thoroughly and be familiar with the equipment before installing or working on it.
- Only trained and qualified professionals familiar with RESCUE® Select Pro™ motors should service the motor and control unit.
- Before connecting or disconnecting cables or other electrical connections, verify that the electrical power to the system is removed. Failure to comply may cause serious damage to the motor or HVAC system or injury.
- Because of the risk of electric shock, only individuals thoroughly trained in the use of multimeters should conduct voltage tests.
- Never touch the metal contacts on the multimeter during a test.
- Always check testing equipment for proper operation before use.



Installation, operation, and maintenance must be performed by qualified personnel. Familiarization with and adherence to the National Electrical Code (NEC) and National Fire Protection Association (NFPA) standards and to local codes are required. It is important to observe safety precautions to protect personnel from possible injury. Personnel should be instructed for handling each of the following:

- Insulate all connections carefully to prevent grounding or short circuits. Reinstall all conduit and terminal box covers. To avoid overheating or loss of performance, voltage to the motor control unit must be within plus or minus 10% of the nameplate voltage.
- Make sure the unit is electrically grounded and that proper electrical installation, wiring, and controls are used consistent with local and national electric codes. Refer to **NEC Handbook** and **NFPA No. 70**. Employ qualified electricians for the installation and maintenance of the unit.
- Code requirements differ from state to state. Install equipment using qualified electricians in accordance with the applicable codes and ordinances in your area and in accordance with NEC. All electrical connections should be made and maintained by a qualified or licensed electrician.
- Make sure there are no unusual noises or vibrations when the motor is running.
- Avoid contact with energized circuits or rotating parts.
- Provide proper safeguards for personnel against rotating parts.
- All aspects of the installation must conform to the applicable requirements of the NEC, including **Article 430 (Motor Circuits and Controllers)**, as well as all local codes.

WARNING

- Always disconnect electrical power at the fuse box or circuit breaker panel before handling electrical connections or performing maintenance on this unit. Allow the motor to come to a complete stop and wait four (4) minutes. This allows the capacitors to discharge any residual voltage for safety.
- Double-check to make sure that electrical power is removed and that it cannot be turned on while you are working on the equipment.
- A poor electrical connection can overheat and cause terminal and/or terminal board failures. Examine the wiring harness quick-connect terminals carefully for any signs of physical deterioration or loose fit to the terminals on the motor terminal board.
- If there is evidence of deterioration or loose fit, remove the quick-connect terminals from the wiring harness and then connect the harness wires directly to the motor terminal board wiring terminals.
- Care must be taken to assure connections are made to the proper terminals and adequate electrical clearances are maintained.
- The control unit on the motor contains hazardous voltage.
- Use only specially designed motors where explosive atmospheric hazards exist. See the ***National Electrical Code (NEC) Article 500*** or check with local codes for explanation of hazardous or classified atmospheres and locations. Unless the motor is specifically marked “Electric Motor for Hazardous Locations,” it is not suitable for use in Class I or II hazardous locations as defined by the NEC.

CAUTION

- Wear safety glasses to inspect the equipment while it is running or while working on equipment.

NOTICE

The motor and control unit are assembled and calibrated as a set. Replacing either the motor or control unit with other unsuitable parts could drastically affect performance tolerance.

- To prevent permanent damage to the unit, only apply nameplate voltage.
- **Do not** apply 230 Vac when the motor is configured for 115 Vac operation. Refer to **page 7**.
- **Do not** strike the motor shaft with a hammer or other tool as this may damage the bearings.
- **Do not** operate the motor without the blower wheel attached. Without the blower wheel attached, the motor will run continuously to a maximum speed and then stop.
- Voltage symbols vary among different multimeters and may be displayed as Vac, AC, V, or a V beneath a wavy line. Select the correct symbol and set the multimeter to the voltage closest to but higher than the voltage you are measuring.
- The RESCUE® Select Pro™ motor is properly packaged for shipment and storage and should be kept in a clean and dry indoor area.
- The motor should be stored indoors in a clean, dry location. Proper selection, installation, and maintenance will assure longer life and more dependable service.
- The RESCUE® Select Pro™ motor may is designed for direct-drive centrifugal blower applications only.
- The RESCUE® Select Pro™ motor is designated for continuous, air-over duty, and must be mounted in the air stream of an air moving device, such as a fan. **Do not** operate the motor outside of the air stream as that may overheat and damage the motor.

Product Overview

The RESCUE® Select Pro™ is a high efficiency variable speed, pre-programmed replacement motor for HVAC applications. This motor enables the homeowner to enjoy many of the benefits of variable speed motors.

Key Features and Benefits

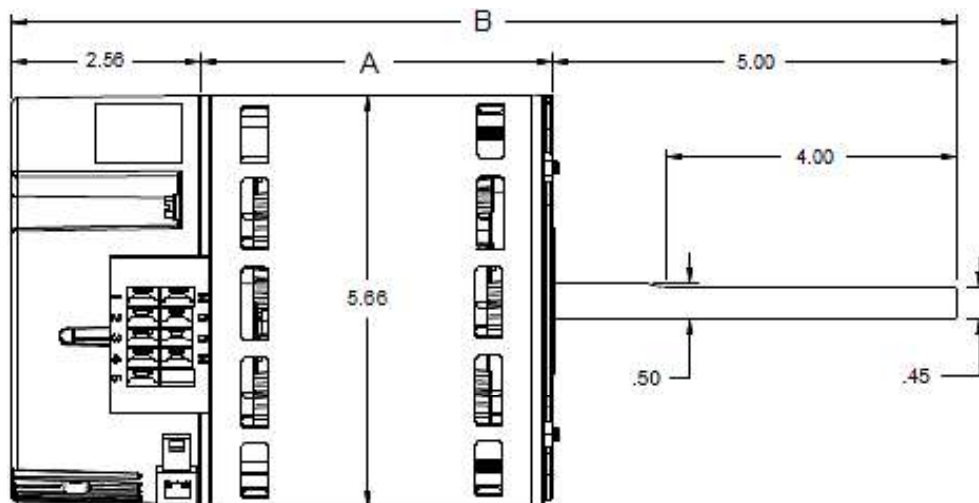
- Ready to install
- Auto rotation sensing technology
- Dual voltage
- Multi-speed operations with five programmable 24 volt taps
- Fully customizable taps
- No programming required

Specifications

- **Horsepower:** 1/3-1/2, 3/4, 1HP
- **Voltage:** 1Ø, 115/208-230 Vac
- **Speed:** 1050 RPM
- **Hertz:** 60 or 50
- **Frame:** NEMA® 48
- **Mounting:** Belly-band

Motor Dimensions

All motor dimensions are for reference only.



HP	Dim. A	Dim. B
1/3-1/2	3.66	11.23
3/4	4.04	11.60
1	4.41	11.98

General Information

Materials Enclosed

- RESCUE® Select Pro™ Motor
- RESCUE® Select Pro™ Motor and Programming App Installation and Configuration Guide
- RESCUE® Select Pro™ Wiring Harness
- Voltage Change Connector (115V)
- Motor Labels for recording a customized Motor ID

Initial Inspection

Check the RESCUE® Select Pro™ motor to verify the following:

- The shaft spins freely by hand.
- The nameplate information conforms to the specifications of the motor ordered.

NOTICE

The RESCUE® Select Pro™ may look visually different than the motor it is replacing. The external appearance is not an exact replica of the motor it is replacing. However, when properly installed, the motor will fit in the blower housing and function according to specifications.

Installing the Motor



- Always disconnect electrical power at the fuse box or circuit breaker panel before handling electrical connections or performing maintenance on this unit. Allow the motor to come to a complete stop and wait four (4) minutes. This allows the capacitors to discharge any residual voltage for safety.
- Double-check to make sure that electrical power is removed and that it cannot be turned on while you are working on the equipment.
- A poor electrical connection can overheat and cause terminal and/or terminal board failures. Examine the wiring harness quick-connect terminals carefully for any signs of physical deterioration or loose fit to the terminals on the motor terminal board.

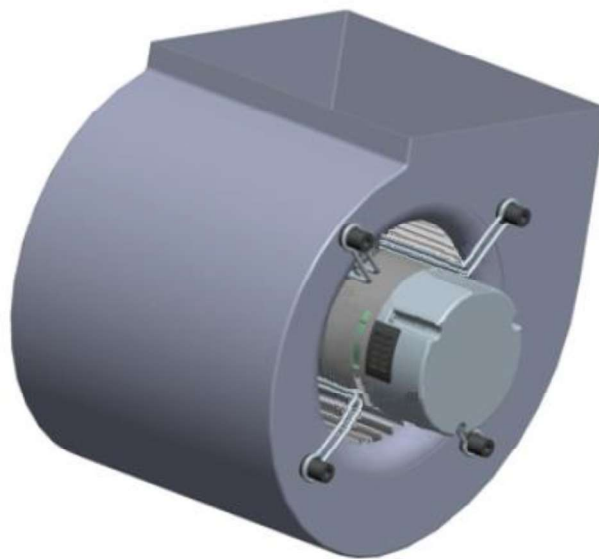
STEP 1: Turn OFF Electrical Power

These instructions provide field technicians with a guide for installing a RESCUE® Select Pro™ motor and are intended for a typical air handler/furnace equipment system. These instructions **do not** override or replace HVAC system manufacturer instructions.

1. Turn **OFF** electric power to the HVAC unit at the disconnect or the main service panel before making any electrical connections.
2. Make sure electrical power cannot be accidentally switched on while you are working on the equipment.

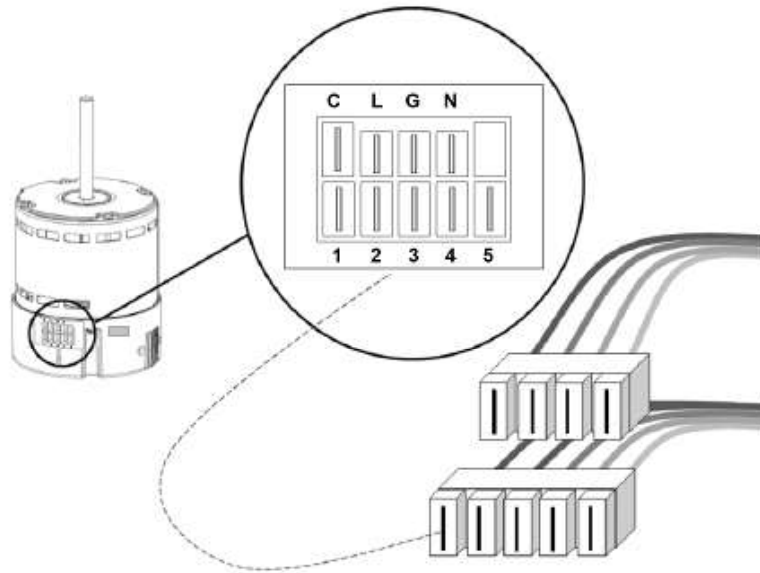
STEP 2: Remove the Blower Housing from the HVAC Equipment

1. Disconnect the furnace wiring harness from the motor.
2. Remove the blower housing from the air handling unit. Refer to the manufacturer's installation manual for blower removal instructions.



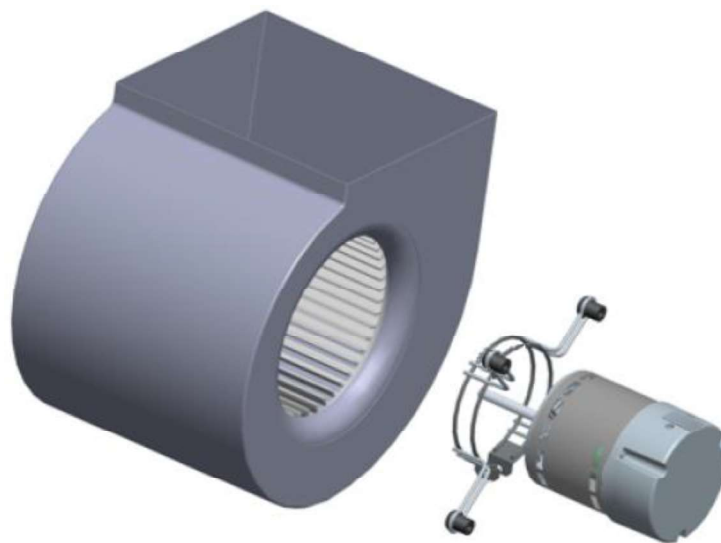
STEP 3: Locate and Verify the Connector

1. Connect the furnace wiring harness to the RESCUE® Select Pro™ replacement motor to ensure proper fit.
2. Disconnect the furnace wiring harness from the new motor and set it aside.



STEP 4: Remove the Original ECM Motor

1. Loosen the set screw on the motor shaft.
2. Remove the screw that secures the belly-band mounting bracket to the original motor and set aside.
3. Remove the original motor from the mounting bracket.
4. Verify that the RESCUE® Select Pro™ has the same horsepower and voltage rating as the original ECM motor.



STEP 5: Install the Replacement Motor

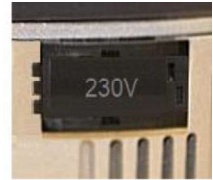
1. Make sure that the nameplate voltage on the RESCUE® Select Pro™ matches the OEM motor. The RESCUE® Select Pro™ ships connected for **208-230 Vac** systems. No action is needed in the case of a **208-230 Vac** requirement.

NOTICE

- If **115 Vac** is required, change the voltage on the RESCUE® Select Pro™ using the Voltage Change Connector located on the control.
 - Flip open the plastic door marked 230V and remove the plastic door.
 - Locate the **115V plug** in the accessory components bag and insert the 115V plug into the Voltage Change Connector. Make sure the 115V plug is pressed firmly into the connector. Without the 115V plug, the motor will not start.
 - Operating the motor at 230 Vac with the 115V plug installed in the connector will cause significant damage to the motor.
2. Insert the RESCUE® Select Pro™ into the mounting bracket. The belly-band can be positioned anywhere on the motor shell except on the end bell (i.e., the control). The preferred position is at the midpoint between the vents. **Do not** cover any of the vents with the belly-band.



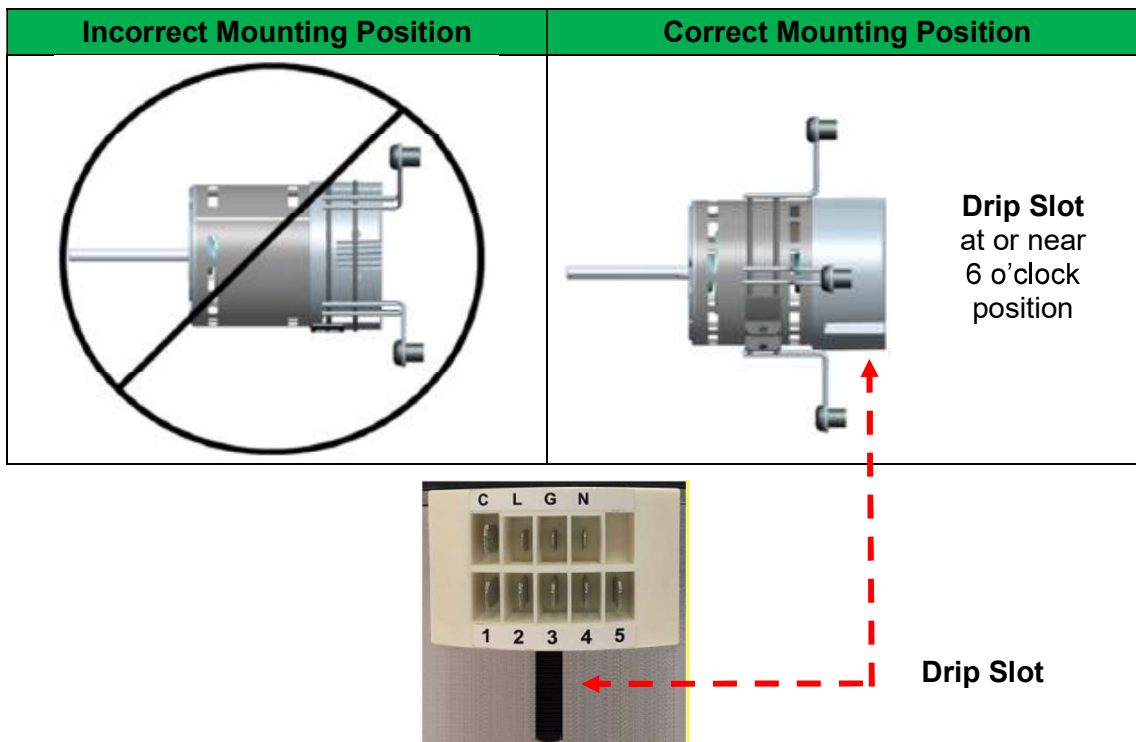
115 Vac System



230 Vac System

NOTICE

- The RESCUE® Select Pro™ can be installed with the mounting bracket from the OEM motor. If a replacement bracket is needed, contact your authorized U.S. Motors® distributor.
- Placing the belly-band on the control housing can damage the motor.



3. When mounting the motor and control into the belly-band, ensure that the **Drip Slot** is positioned at or near the 6 o'clock position to allow any condensation build-up to drain from the motor.

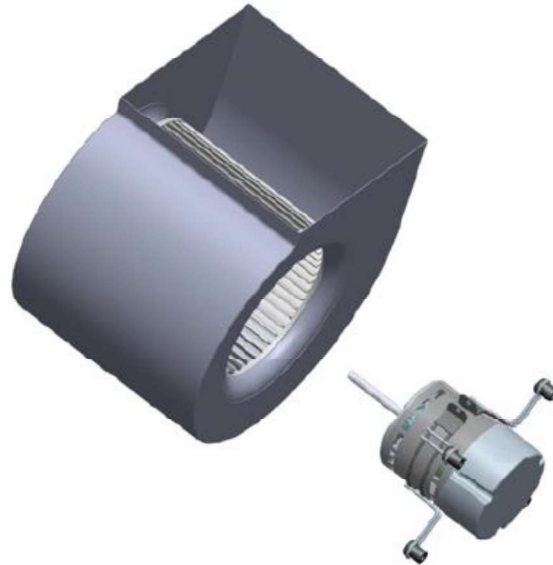
4. Secure the bracket to the motor by tightening the bracket mounting screw.

NOTICE

- The motor must be securely fastened to minimize noise and prevent vibration. Ensure the belly-band legs cannot be moved. For secure mounting, use high-quality bolts of the largest possible diameter.

STEP 6: Install the Replacement Motor in the Air Handling Unit

1. Insert the motor shaft into the blower wheel, securing the motor to the blower housing.



2. Align the blower wheel so it is properly centered in the blower housing. Then, align the wheel's set screw to the flat of the motor shaft.
3. Secure the blower wheel to the motor shaft by tightening the set screw to a torque setting of **157 in-lbs**.

STEP 7: Reinstall the Blower Assembly in the HVAC System

1. Follow the manufacturer's installation manual for blower installation instructions.
2. Connect the furnace wiring harness to the replacement motor.

STEP 8: The Motor Is Ready for Operation!

- The RESCUE® Select Pro™ is pre-programmed with default settings.
- The motor is ready to perform.
- (Optional) You can customize the motor, if you want to.

Interested in Advance Configuration and Programming?

Download the App! Refer to the download and programming instructions beginning on **page 11**. Advance features allow you to:

- Access direct OEM Profiles.
- Create a Customized Profile.
- Make airflow setting adjustments on-the-fly.
- Program other advanced capabilities.

Motor Start-Up and Operation

For default settings, the first time the RESCUE® Select Pro™ is powered on and receives a run signal from the system control board, it performs a rotation sensing process. The motor runs for approximately 20 seconds in each direction to determine the proper direction for the application. Once the motor determines the proper operating direction, the information is stored and the motor does not require the process for subsequent run signals. In the event of system power loss exceeding 60 seconds, the rotation sensing process is re-initiated at the next run signal after power is restored. If the motor is unable to sense the proper rotation, the motor uses default rotation, which is counter-clockwise (CCW).



- Electric Shock Hazard! The motor must be properly grounded through the furnace wiring harness.
- Be careful when touching the exterior of an operating motor. It may be hot enough to cause serious injury. This condition is normal for most motors when operated at rated load and voltage.

A motor should not be operated under conditions that cause the motor protection mode to run continually. A motor that operates continually in motor protection mode may be overloaded, or the supply voltage or frequency may be incorrect.

Actual operating speed is determined by the load applied. In general, if a motor is properly sized and connected to its load, a detectable speed difference will be noted when different speed taps are energized. When operating without a load, however, a motor will run continuously to a maximum speed and then stop and restart operation.

Operating Mode Checklist



- For air moving applications, all enclosure covers and panels must be in place before measuring the amperage.
- Voltage and moving parts around motors and motor driven equipment can cause serious or fatal injuries. Turn **OFF** electrical power before connecting or servicing the motor.

After installation, motor operation should be tested in all system modes for the following:

Check #	System Test	Description
1	Start-Up and Shut-Off Delays	Once the motor is powered ON , it is normal for a RESCUE® Select Pro™ to experience a 10-12 second delay before beginning operation and may take 30 seconds before reaching full speed. When the motor is turned OFF , it is normal for the motor to experience a 30 second delay before turning OFF .
2	Unusual Noise or Vibration	If unusual noise or vibration is detected, refer to the Troubleshooting section on page 23 .
3	Motor Amperage	The amperage reading at the highest speed setting should be within 10% of the specification shown on the nameplate.
4	Air Flow	Verify that the correct airflow is present in all operating modes.

Final Checks

- Check the mounting and fastening of both the motor and the control. Make sure the motor and control are securely attached together and mounted tightly in HVAC system.
- Check the wiring harness for shorts and detached wiring. Ensure that the wiring harness is securely connected to the control connector.
- Check the wiring harness and signal connections. Make sure both are securely connected to the control connectors.
- Check the blower motor and verify wheel rotation. Make sure it spins freely manually without effort or assisted means in both directions.
- Verify that the set screw on the blower wheel is securely tightened.
- Check that the circuit breaker is **ON**.

Maintenance



Before performing any maintenance on the motor, disconnect electrical power and allow the motor to come to a complete stop. For safety, wait four (4) minutes. This allows sufficient time for the capacitors to discharge any residual voltage.

- Periodically inspect the installation. Check for dirt accumulation, unusual noises or vibration, overheating, worn or loose couplings, high motor amps, poor wiring or overheated connections, loose mounting bolts or guards, and worn motor starter contacts. Check the wiring harnesses and control connectors. Inspect for shorts, detached wiring, or loose connections.
- Remove dirt accumulation, particularly in and around vent openings by vacuuming. Dirt accumulation can cause motor overheating and is a fire hazard.
- **Do not** use solvents! Some solvents may attack motor insulation, finish, or bearing lubricants. Solvents are highly flammable.
- Ball bearing motors are permanently lubricated. No maintenance is required.

Troubleshooting

Symptom	Possible Cause	Corrective Action
Cannot log into App.	Incorrect Username and/or Password	Username and password are case-sensitive. Double-check and retry. If the problem continues, call the Motor Hotline.
	No data connection, Wi-Fi or cellular	Establish a Wi-Fi or cellular connection and retry.
Error Code 100-113 Unable to program motor. Lost connection to motor during programming.	Motor is not powered.	Check the connections to the motor connector.
	Device connection failed.	In the Bluetooth settings for the device, un-pair any previously paired programming tools and retry pairing.
Error code 201 Wrong HP.	Wrong Motor HP Rating.	Verify that the motor is the correct HP.
Error code 202 Programming failed.	Corrupt motor data file.	Retry programming. If the problems persist, contact the Motor Hotline.
Error code 203.		
Error code 204 Wrong Motor Type.		
Error code 205.	Wrong Motor Voltage.	Verify that the motor is the correct voltage.
	Corrupt motor data file.	Contact the Motor Hotline.
Message: Connected Motor is wrong horsepower.	The motor horsepower does not match the original motor's HP.	Verify that the HP on the replacement motor is the same as the number shown in the App.
No Data Received. Make sure motor is connected to controller.	Motor not paired to the device. No power applied to motor.	Check the connections. Check the power supply.
Unable to program motor. Lost connection to motor during programming.	The motor lost connection during programming.	Check the USB cable connection to your device.

For Technical Assistance call the
Technical Hotline:
1-888-540-5540

FCC Certification / Digital Modulation

The BM78 module has received Federal Communications Commission (FCC) CFR47 Telecommunications, Part 15 Subpart C "Intentional Radiators" modular approval in accordance with Part 15.212 Modular Transmitter approval.

In addition, The BM78 module has been certified for use in Canada under Industry Canada (IC) Radio Standards Specification (RSS) RSS-247 and RSS-Gen.

United States

This equipment has been tested and found to comply with the limits for a Class B digital device, pursuant to part 15 of the FCC Rules. These limits are designed to provide reasonable protection against harmful interference in a residential installation. This equipment generates, uses and can radiate radio frequency energy, and if not installed and used in accordance with the instructions, may cause harmful interference to radio communications. However, there is no guarantee that interference will not occur in a particular installation. If this equipment does cause harmful interference to radio or television reception, which can be determined by turning the equipment off and on, the user is encouraged to try to correct the interference by one or more of the following measures:

- Reorient or relocate the receiving antenna.
- Increase the separation between the equipment and receiver.
- Connect the equipment into an outlet on a circuit different from that to which the receiver is connected.
- Consult the dealer or an experienced radio/TV technician for help.

Canada

Under Industry Canada regulations, this radio transmitter may only operate using an antenna of a type and maximum (or lesser) gain approved for the transmitter by Industry Canada. To reduce potential radio interference to other users, the antenna type and its gain should be so chosen that the equivalent isotropically radiated power (e.i.r.p.) is not more than that necessary for successful communication.

Conformément à la réglementation d'Industrie Canada, le présent émetteur radio peut fonctionner avec une antenne d'un type et d'un gain maximal (ou inférieur) approuvé pour l'émetteur par Industrie Canada. Dans le but de réduire les risques de brouillage radioélectrique à l'intention des autres utilisateurs, il faut choisir le type d'antenne et son gain de sorte que la puissance isotrope rayonnée équivalente (p.i.r.e.) ne dépasse pas l'intensité nécessaire à l'établissement d'une communication satisfaisante.

Warranty Information

LIMITED WARRANTY

Nidec Motor Corporation (NMC) extends the following LIMITED WARRANTY to the purchaser and to its customers (collectively referred to as the "Purchaser") of the enclosed motor and components: the motor and components are free from defects in materials and workmanship under normal use, service and maintenance FOR A PERIOD OF 24 MONTHS FROM THE DATE OF ORIGINAL PURCHASE FROM NMC OR THE NMC DEALER/RETAILER, NOT TO EXCEED 30 MONTHS FROM THE DATE OF MANUFACTURE BY NMC. THE FOREGOING WARRANTY IS THE ONLY WARRANTY GIVEN AND NO OTHER WARRANTY IS PROVIDED, EXPRESS OR IMPLIED, INCLUDING WITHOUT LIMITATION, MERCHANTABILITY OR FITNESS FOR A PARTICULAR PURPOSE. CERTAIN ASPECTS OF DISCLAIMERS ARE NOT APPLICABLE TO CONSUMER PRODUCTS, i.e., motors and components acquired by individuals and used for personal, family or household purposes (as distinguished from industrial or other purposes). Some states do not allow limitations on how long an implied warranty lasts, so the above limitation may not apply to you. This warranty gives you specific legal rights, and you may have other rights which vary from state to state.

Certain repairs or services are the responsibility of the Purchaser and the Purchaser is expected to pay for them. This warranty does not extend to any losses or damages due to misuse, accident, abuse, neglect, negligence, unauthorized modification or alteration, use beyond rated capacity, or improper installation, maintenance, application or use, including, without limitation, use in a manner contrary to the accompanying instructions or applicable codes.

If within thirty (30) days after Purchaser's discovery of any warranty defects within the above stated warranty period, Purchaser notifies NMC or the dealer from whom the motor was purchased in writing, NMC shall, at its option and as Purchaser's exclusive remedy, repair or replace or refund the purchase price for that portion of the motor and components found by NMC to be defective. Failure by Purchaser to give such written notice within the applicable time period shall be deemed an absolute and unconditional waiver of Purchaser's claim for such defects. Purchaser must write or call the dealer from whom the motor was purchased for directions regarding the shipment of the motor, with freight prepaid by the Purchaser, to an authorized service location for warranty service. If Purchaser is unable to contact the dealer to obtain sufficient instructions regarding the handling of the motor, Purchaser should write NMC at the address below, giving the motor model number, the dealer's name, address and number of dealer's invoice; and describing the nature of the alleged defect. Arrangements for warranty service will then be made by NMC.

If the motor is damaged in transit, Purchaser should file a claim directly with the carrier.

IN NO EVENT, REGARDLESS OF THE FORM OF THE CLAIM OR CAUSE OF ACTION (WHETHER BASED IN CONTRACT, INFRINGEMENT, NEGLIGENCE, STRICT LIABILITY, OTHER TORT OR OTHERWISE), SHALL NIDEC'S LIABILITY TO PURCHASER OR ITS CUSTOMER EXCEED THE PRICE PAID BY PURCHASER FOR THE SPECIFIC MOTOR OR OTHER GOODS PROVIDED BY GIVING RISE TO THE CAUSE OF ACTION. IN NO EVENT SHALL NIDEC'S LIABILITY TO PURCHASER OR ITS CUSTOMER EXTEND TO INCLUDE INCIDENTAL CONSEQUENTIAL OR PUNITIVE DAMAGES. WITH RESPECT TO CONSUMER PRODUCTS, SOME STATES DO NOT ALLOW THE EXCLUSION OR LIMITATION OF INCIDENTAL OR CONSEQUENTIAL DAMAGES, SO THE ABOVE LIMITATION OR EXCLUSION MAY NOT APPLY TO YOU.

© 2019 Nidec Motor Corporation. All rights reserved. U.S.
Motors®, SelecTech® and RESCUE® Select Pro™ are registered
trademarks of Nidec Motor Corporation.

For more information

Visit us at www.nidec-motor.com

Nidec Motor Corporation
8050 W. Florissant Avenue
PO Box 36912
St. Louis, MO 63136

