



EVEXIA™

Patient Bed Light



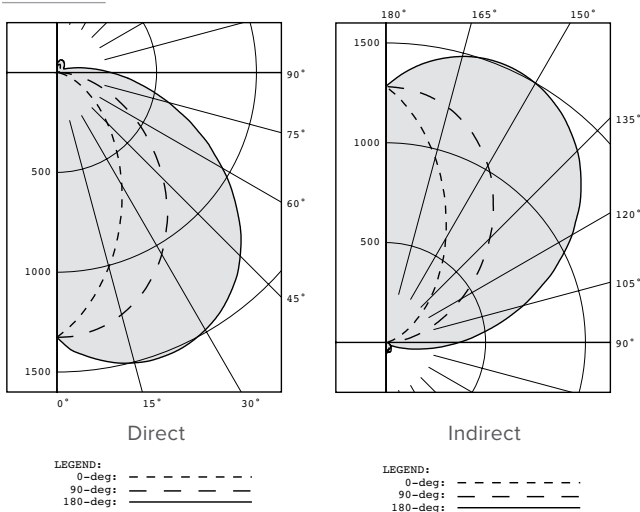
PRODUCT OVERVIEW

Evexia blends a simple design, solid state performance, and durable construction for a bed light luminaire that addresses the varied challenges of the patient bed environment. The flowing lines and gentle transitions in its form are aesthetically appealing and simplify routine cleaning. Dual optical compartments provide high quality, low glare illumination for both ambient and reading tasks while the die cast and extruded aluminum construction withstands the daily rigors of healthcare spaces.

APPLICATIONS

- Patient Rooms
- Emergency Room Examination
- Physician's Examination

CANDELA PLOT



OPTIONS



Pull Switch



Integral LVC



3-Way Night Light Switch

AVAILABLE FINISHES



White



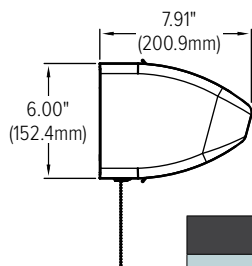
Taupe



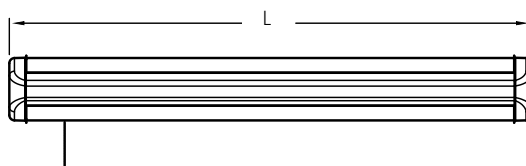
Aluminum

DIMENSIONS

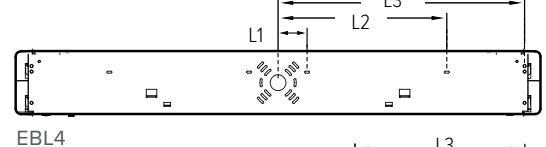
Side View



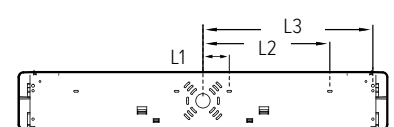
Front View



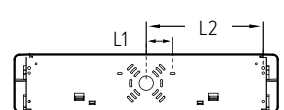
Back View



EBL4



EBL3



EBL2

	L	L1	L2	L3
EBL2	27.47" (697.738mm)	2.75" (69.85mm)	12.23" (310.642mm)	-
EBL3	38.50" (977.9 mm)	2.75" (69.85mm)	13.25" (336.55mm)	17.74" (450.596mm)
EBL4	49.76" (1263.904 mm)	2.75" (69.85mm)	16" (406.4mm)	23.38" (593.852mm)