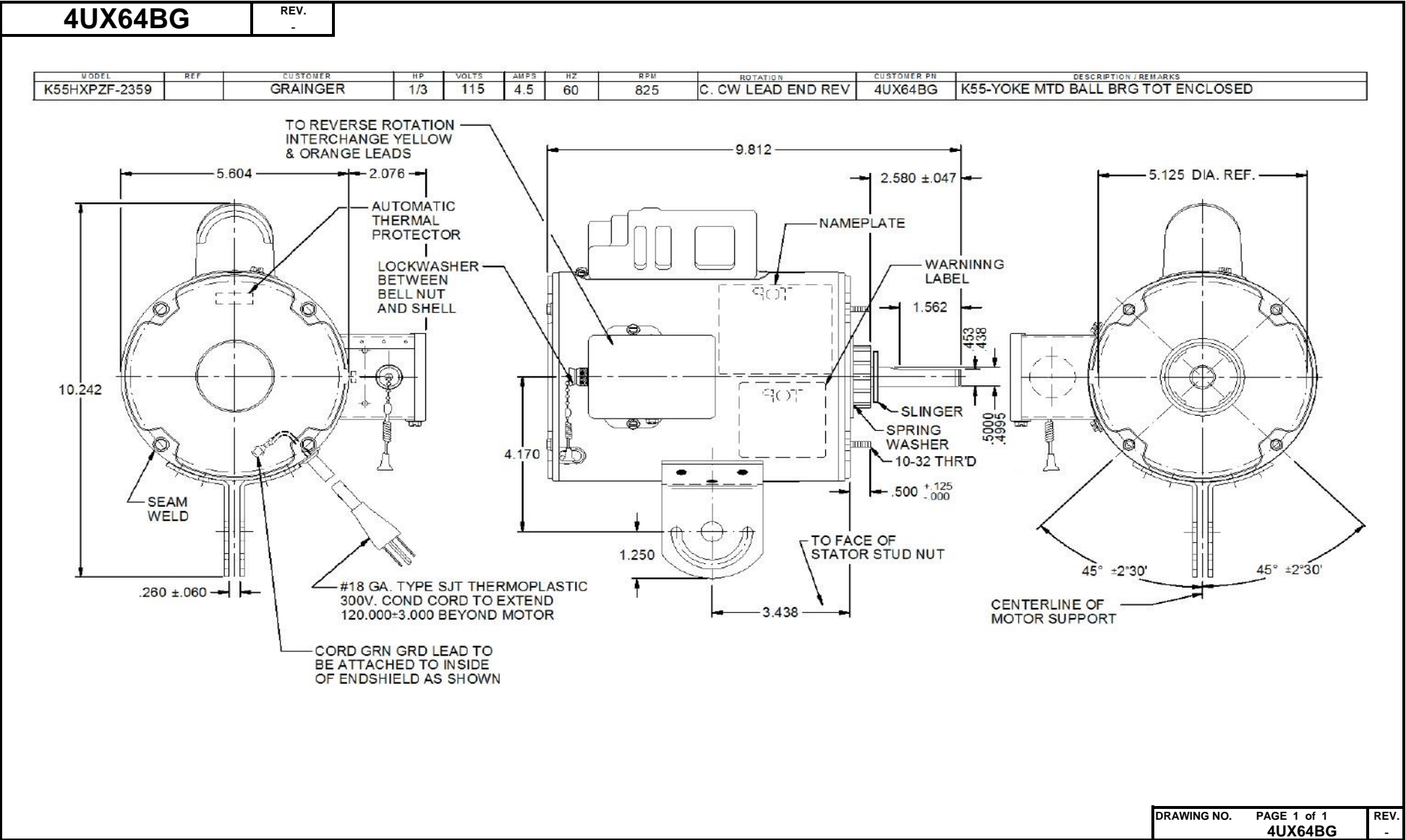


Dimensional Drawing



4UX64BG

REV.

-

SHADED-POLE & PSC MOTOR PERFORMANCE

HP:	1/3							
Poles:	8							
Ambient (°C):	40							
Altitude (FASL):								
No. of Speeds:	1							
HIGH SPEED								
Volts:	115	115						
HZ:	60	60						
Service Factor:	1							
Efficiency:	@ Rated Load	-						
Power Factor:	@ Rated Load	-						
Amps:	@ No Load							
	@ Rated Load	3.7						
	@ Locked Rotor	11						
RPM:	@ Rated Load	857						
Torques:	Breakdown	53.8						
	Locked Rotor	9						
	Pull-Up	9						
	Rated Load	32.6						
	Service Factor	N/A						
Watts:	Rated Load	395						
Temperature Rise:	@ Rated Load	N/A						
Thermal Protector:	Trip Temp (°C)	N/A						
Winding Material:	Start (Auxiliary)	Cu						
	Run (Main)	Cu						
Capacitor(s):	Run (MFD / Volts)	30MFD 370VAC						
	No. of Run Capacitors							

MEDIUM-HIGH SPEED

HP:								
Volts:								
HZ:								
Efficiency:	@ Rated Load							
Power Factor:	@ Rated Load							
Amps:	@ No Load							
	@ Rated Load							
	@ Locked Rotor							
Torques: Oz.Ft. / Lb.In. (Circle One)	Breakdown							
	Locked Rotor							
	Pull-Up							
	Rated Load							
Watts:	@ Rated Load							
Temperature Rise:	@ Rated Load							

 DRAWING NO. PAGE 1 of 1
 4UX64BG

 REV.
 -

Performance Data



4UX64BG

REV.
-

Dayton Manufacturing Company

Motor Description

Model: K055PZF2359 4UX64
Motor ID: 1/1
Poles: 8
Volts: 115
Frequency: 60
HP: 1/3
Speed: 825
Phase: 1
Protector: 7AM036-A5

Test Conditions

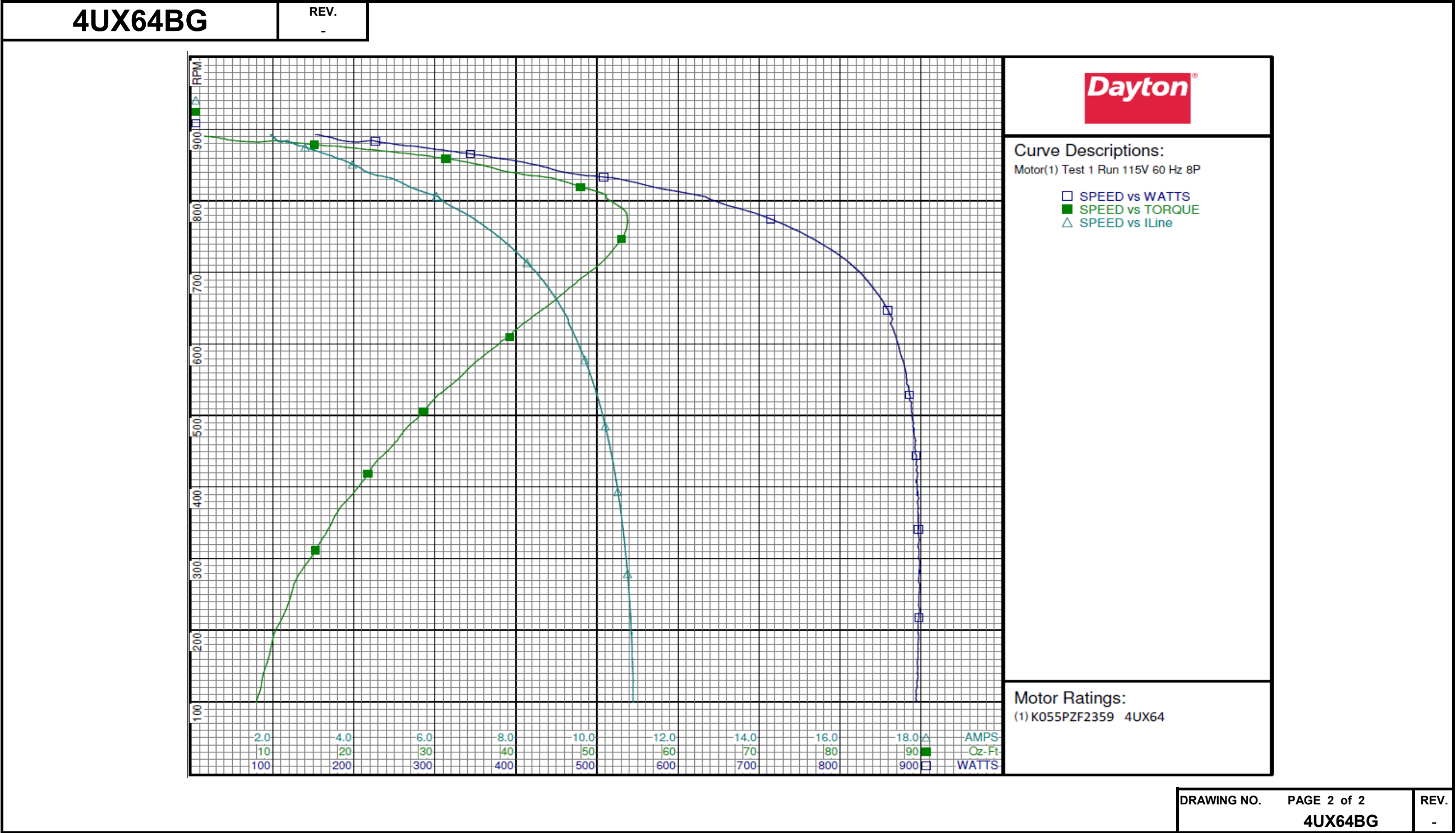
Test Type: Run
Test Number: 1
Poles: 8
Volts: 115
Hz: 60
Rotation:
Special Cond:
Speed Conn:
TestBoard: Amtps Performance Fixture #4
Run Cap: 0
Start Cap: 0µfd
Environment: 20.6 Deg C 33 % RH 989 hPa
Tested: 12/8/2015 2:23:13 PM
Tested By: Sharp, Gerald
Gear Ratio: 1:1
Bearing Friction: -0.39 Oz-Ft
Windage Torque: -1.65 Oz-Ft

Special Points	Vline (V)	Vaux (V)	Vcap (V)	Iline (A)	Imain (A)	Iaux (A)	Watts	RPM	Tq(Oz-ft)	HP	Eff(%)	PF(%)	Cap
	115.0	157.6	210.0	1.933	2.973	2.316	152.5	893	0.00	0.000	0.0	68.6	29.3
	115.0	156.3	208.1	2.023	2.906	2.296	170.7	889	2.87	0.030	13.3	73.4	29.3
	115.0	154.1	204.9	2.173	2.823	2.262	197.9	883	7.22	0.076	28.6	79.2	29.3
	115.0	151.9	201.7	2.404	2.811	2.226	230.2	882	11.71	0.123	39.8	83.3	29.3
	115.0	149.0	197.2	2.696	2.832	2.177	270.2	877	17.23	0.180	49.7	87.1	29.3
	115.0	145.4	192.6	3.010	2.939	2.126	309.4	871	22.52	0.234	56.3	89.4	29.3
	115.0	141.2	187.3	3.401	3.147	2.067	356.0	864	28.42	0.292	61.3	91.0	29.3
0.333 HP	115.0	137.5	182.8	3.735	3.371	2.016	394.6	857	32.63	0.333	63.0	91.9	29.3
	115.0	136.2	181.2	3.842	3.454	2.000	406.9	855	33.81	0.344	63.1	92.1	29.3
	115.0	130.2	174.2	4.316	3.874	1.925	457.6	841	38.99	0.390	63.6	92.2	29.3
	115.0	121.9	165.2	5.059	4.562	1.824	536.2	828	45.57	0.449	62.5	92.2	29.3
825 RPM	115.0	120.2	163.5	5.192	4.698	1.807	549.8	825	46.57	0.457	62.1	92.1	29.3
	115.0	110.3	153.7	5.988	5.548	1.698	626.1	808	51.16	0.492	58.6	90.9	29.3
	115.0	103.3	147.5	6.493	6.123	1.632	673.8	790	53.10	0.499	55.3	90.2	29.3
BDT OZ-FT	115.0	95.1	141.0	7.083	6.804	1.561	724.3	770	53.76	0.493	50.8	88.9	29.4
	115.0	90.1	137.5	7.422	7.206	1.523	750.5	757	53.48	0.482	47.9	87.9	29.4
	115.0	76.7	130.0	8.280	8.246	1.440	811.2	714	50.50	0.429	39.5	85.2	29.4
	115.0	65.7	125.8	8.949	9.081	1.395	848.6	667	45.35	0.360	31.6	82.5	29.4
	115.0	56.8	124.1	9.407	9.727	1.375	866.6	616	39.62	0.291	25.0	80.1	29.4
	115.0	50.9	123.9	9.734	10.151	1.371	878.5	573	34.86	0.238	20.2	78.5	29.3
	115.0	46.8	124.0	9.956	10.439	1.373	884.8	537	31.32	0.200	16.9	77.3	29.4
	115.0	43.8	124.5	10.113	10.646	1.376	887.9	506	28.62	0.172	14.5	76.3	29.3
	115.0	41.4	124.9	10.236	10.806	1.382	890.6	478	26.15	0.149	12.5	75.7	29.4
	115.0	39.2	125.4	10.347	10.959	1.388	892.4	448	23.90	0.128	10.7	75.0	29.4
	115.0	37.3	126.3	10.459	11.110	1.397	895.2	415	21.48	0.106	8.8	74.4	29.3
	115.0	35.3	127.1	10.554	11.246	1.406	895.4	380	18.99	0.086	7.2	73.8	29.3
	115.0	33.8	128.0	10.641	11.365	1.417	896.8	341	16.79	0.068	5.7	73.3	29.4
	115.0	32.4	129.1	10.717	11.475	1.429	896.8	302	14.71	0.053	4.4	72.8	29.4
	115.0	31.4	130.3	10.780	11.574	1.441	898.0	258	12.46	0.038	3.2	72.4	29.3
	115.0	30.2	131.3	10.830	11.656	1.452	896.0	212	10.93	0.028	2.3	71.9	29.3
	115.0	29.5	132.3	10.870	11.722	1.463	896.0	169	9.63	0.019	1.6	71.7	29.3
	115.0	28.8	133.6	10.885	11.765	1.477	893.5	115	8.41	0.012	1.0	71.4	29.3

DRAWING NO. PAGE 1 of 2 REV.
4UX64BG -

Dayton Electric Mfg. Co. Lake Forest, IL 60045 USA

Performance Data





4UX64BG	REV. -			
<p>PULL SWITCH FOR ON - OFF OPERATION</p> <p>ROTATION IS CCW LEAD END REVERSIBLE TO REVERSE ROTATION INTERCHANGE YELLOW AND ORANGE LEADS</p>				
		DRAWING NO.	PAGE 1 of 1 4UX64BG	REV. -

Dayton®

PEDESTAL FAN MOTOR

HP: 1/3**VOLTS:** 115**AMPS:** 4.5**RPM:** 825**DUTY:** CONT**SF:** 1.0**KVA CODE:****ENCL:** TEAO**THERMALLY PROTECTED:** AUTOMFG. NO. PROT. CODE: **MTR REF:** K55HXPZF-2359**BAR CODE**Part
No **4UX64BG****PH:** 1**HZ:** 60**FR:** 48YZ**INS CL:** B**AMB:** 40 °C**SFA:**AVG. F.L.
EFF.**Disconnect Power Before Making Any
Electrical Connections or Changes****PULL SWITCH FOR
ON - OFF OPERATION****ROTATION IS CCW LEAD
END REVERSIBLE TO
REVERSE ROTATION
INTERCHANGE YELLOW
AND ORANGE LEADS**

E37403



258501

Mfd for Dayton Electric Mfg. Co., Lake Forest, IL 60045 USA **Made in Mexico**