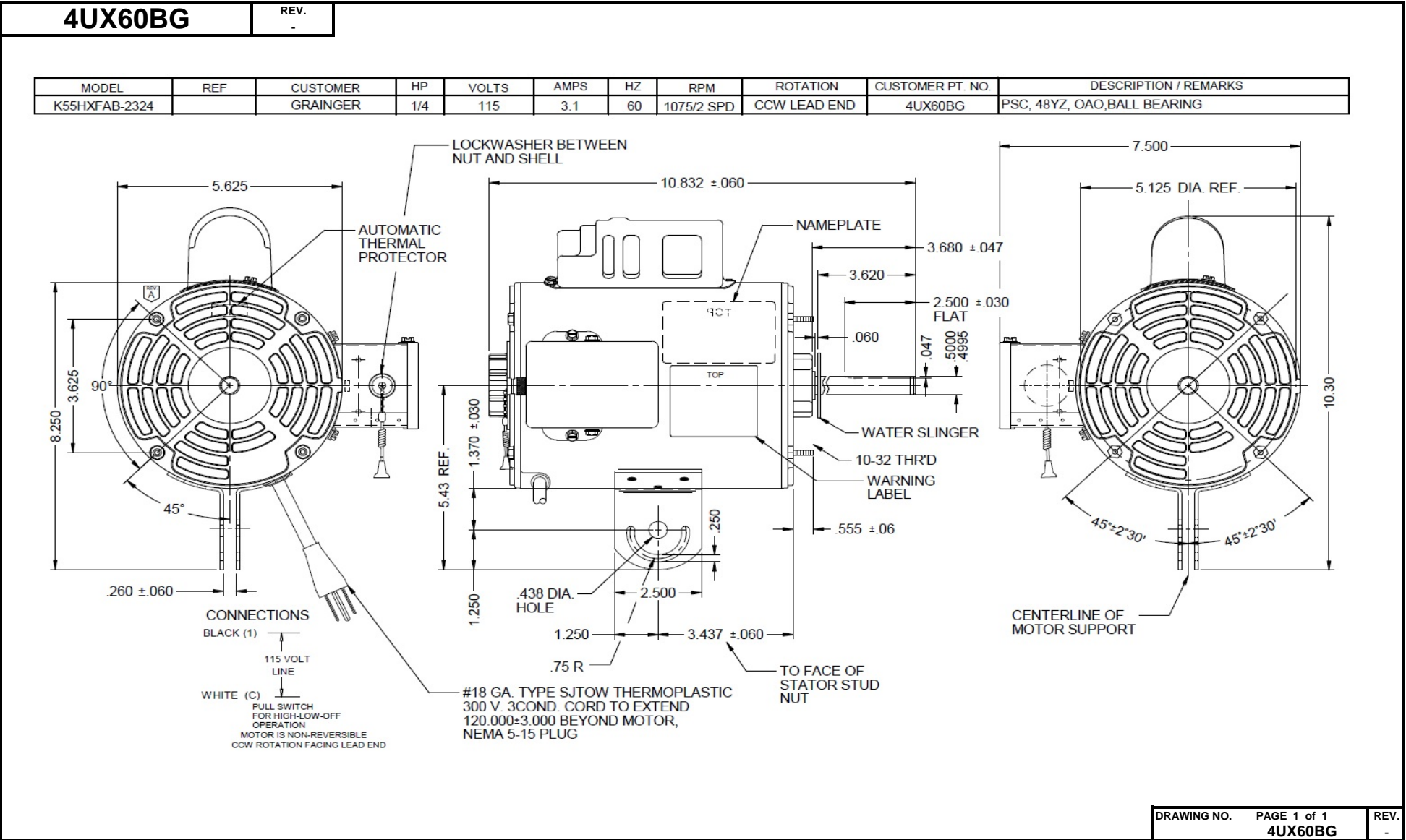


Dimensional Drawing



4UX60BG

REV.

-

SHADED-POLE & PSC MOTOR PERFORMANCE

HP:	1/4							
Poles:	6							
Ambient (°C):	40							
Altitude (FASL):								
No. of Speeds:	2							
HIGH SPEED								
Volts:	115	115						
HZ:	60	60						
Service Factor:	1							
Efficiency:	@ Rated Load	62.3						
Power Factor:	@ Rated Load	85.6						
Amps:	@ No Load							
	@ Rated Load	3.1 NP						
	@ Locked Rotor	7.3						
RPM:	@ Rated Load	1091						
Torques:	Breakdown	25.4						
	Locked Rotor	5.5						
	Pull-Up	4.9						
	Rated Load	19.5 NP						
	Service Factor	19.5 NP						
Watts:	Rated Load	304						
Temperature Rise:	@ Rated Load	-						
Thermal Protector:	Trip Temp (°C)	-						
Winding Material:	Start (Auxiliary)	Cu						
	Run (Main)	Cu						
Capacitor(s):	Run (MFD / Volts)	5 mFd, 440v						
	No. of Run Capacitors							

MEDIUM-HIGH SPEED

HP:								
Volts:								
HZ:								
Efficiency:	@ Rated Load							
Power Factor:	@ Rated Load							
Amps:	@ No Load							
	@ Rated Load							
	@ Locked Rotor							
Torques: Oz.Ft. / Lb.In. (Circle One)	Breakdown							
	Locked Rotor							
	Pull-Up							
	Rated Load							
Watts:	@ Rated Load							
Temperature Rise:	@ Rated Load							

 DRAWING NO. PAGE 1 of 1
 4UX60BG

 REV.
 -

Performance Data



4UX60BG

REV.
-

Dayton Manufacturing Company

Motor Description

Model: K055FAB2324 4UX60BG
Motor ID: 2
Poles: 6
Volts: 115
Frequency: 60
HP: 1/4
Speed: 1075
Phase: 1
Protector: 7AM036-A5

Test Conditions

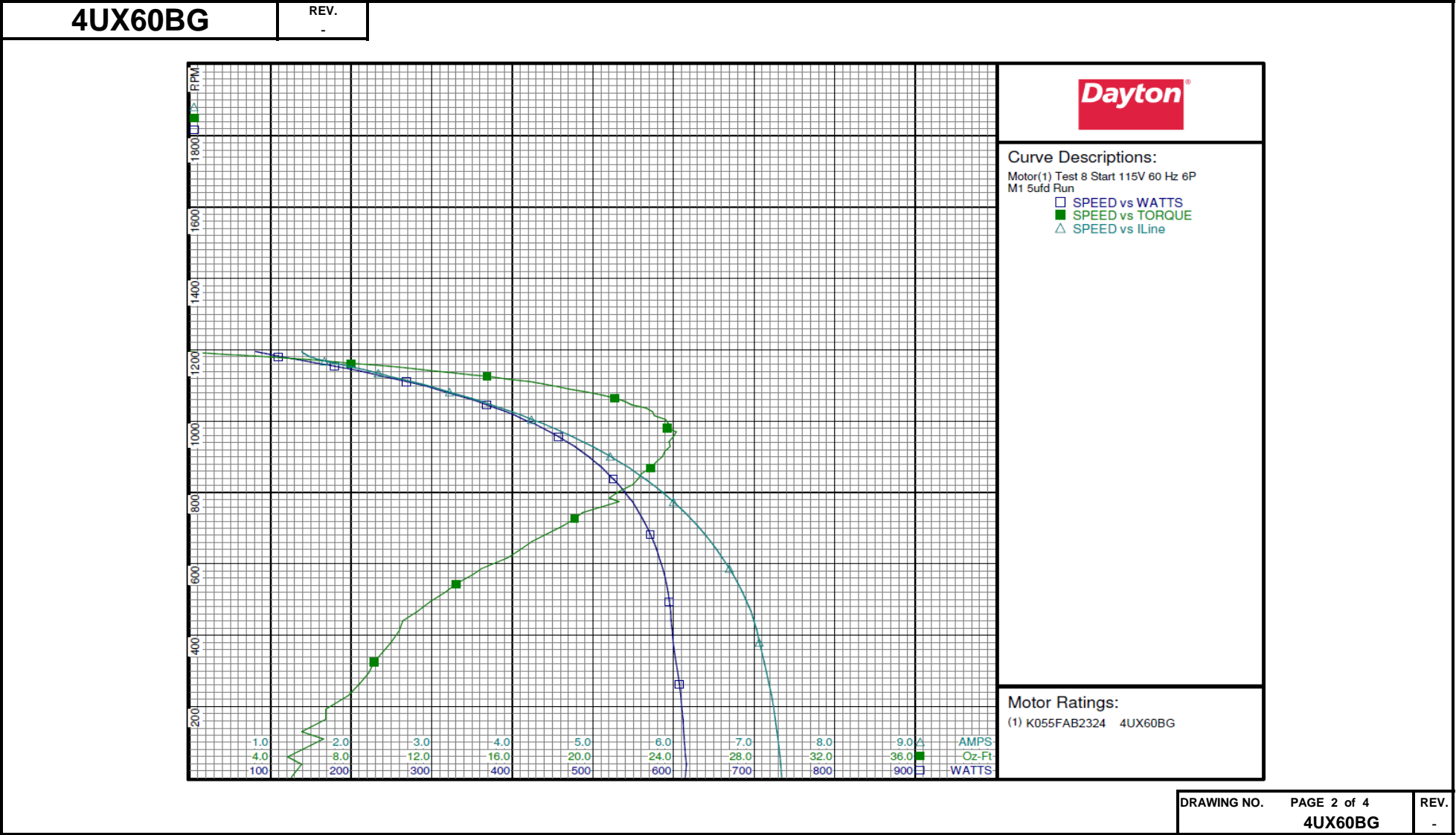
Test Type: Start Run Cap: 5
Test Number: 8 Start Cap: 0µfd
Poles: 6 Environment: 22.4 Deg C 28 % RH 968 hPa
Volts: 115 Tested: 2/12/2016 2:22:56 PM
Hz: 60 Tested By: Navarro, Susana
Rotation: Gear Ratio: 1:1
Special Cond: Bearing Friction: -0.12 Oz-Ft
Speed Conn: M1 Windage Torque: -0.83 Oz-Ft
TestBoard: CMD InLine Three Phase #2 Fixture #1

Special Points	Vline (V)	Vaux (V)	Vcap (V)	Iline (A)	Watts	RPM	Tq (Oz-ft)	HP	Eff (%)	PF (%)
PUT OZ-FT	115.0	51.2	219.5	7.330	615.9	38	5.53	0.002	0.3	73.1
	115.0	51.0	218.1	7.321	614.9	59	4.85	0.003	0.4	73.0
	115.0	51.1	214.5	7.282	612.5	129	5.54	0.009	1.0	73.1
	115.0	52.7	209.9	7.216	608.9	230	7.84	0.021	2.6	73.4
	115.0	55.1	205.4	7.124	603.0	325	9.14	0.035	4.4	73.6
	115.0	60.0	201.8	7.034	598.3	413	10.39	0.051	6.4	74.0
	115.0	68.0	200.6	6.908	594.8	494	11.93	0.070	8.8	74.9
	115.0	76.6	200.6	6.736	588.6	571	14.06	0.095	12.1	76.0
	115.0	85.4	200.7	6.531	578.9	641	16.42	0.125	16.1	77.1
	115.0	95.0	201.8	6.299	566.3	706	18.50	0.156	20.5	78.2
	115.0	106.7	204.6	6.000	549.2	774	21.29	0.196	26.6	79.6
	115.0	116.8	208.5	5.743	532.0	822	21.98	0.215	30.2	80.6
	115.0	128.3	214.0	5.446	511.2	869	22.87	0.237	34.5	81.6
	115.0	141.4	222.0	5.101	485.4	915	23.57	0.257	39.5	82.8
	115.0	154.4	231.5	4.745	457.3	957	23.99	0.273	44.6	83.8
	115.0	167.4	242.2	4.386	427.1	992	23.75	0.281	49.0	84.7
	115.0	181.1	255.0	3.997	392.5	1026	22.96	0.280	53.3	85.4
	115.0	194.4	268.5	3.614	356.6	1055	21.58	0.271	56.7	85.8
	115.0	207.5	283.2	3.222	317.4	1081	19.71	0.254	59.6	85.6
	115.0	219.3	296.8	2.865	281.1	1104	17.48	0.230	61.0	85.3
	115.0	231.8	313.0	2.461	237.1	1126	14.74	0.198	62.2	83.8
	115.0	238.6	322.3	2.240	211.9	1140	12.23	0.166	58.4	82.3
	115.0	245.6	333.8	1.964	179.5	1154	9.84	0.135	56.2	79.5
	115.0	250.9	344.9	1.724	150.0	1165	7.34	0.102	50.6	75.7
6.425 OZ-FT	115.0	252.9	349.6	1.645	139.0	1170	6.43	0.089	48.0	73.5
	115.0	255.6	355.5	1.554	125.7	1175	5.17	0.072	42.9	70.3
	115.0	259.1	362.8	1.471	108.9	1182	3.21	0.045	31.0	64.4
	115.0	262.2	368.5	1.419	94.6	1188	1.22	0.017	13.6	58.0
	115.0	264.0	371.6	1.394	85.5	1193	0.21	0.003	2.6	53.3
	115.0	264.9	372.5	1.387	81.3	1195	0.00	0.000	0.0	51.0

DRAWING NO. PAGE 1 of 4 REV.
4UX60BG -

Dayton Electric Mfg. Co. Lake Forest, IL 60045 USA

Performance Data



Performance Data



4UX60BG

REV.
-

Dayton Manufacturing Company

Motor Description

Model: K055FAB2324 4UX60BG
Motor ID: 2
Poles: 6
Volts: 115
Frequency: 60
HP: 1/4
Speed: 1075
Phase: 1
Protector: 7AM036-A5

Test Conditions

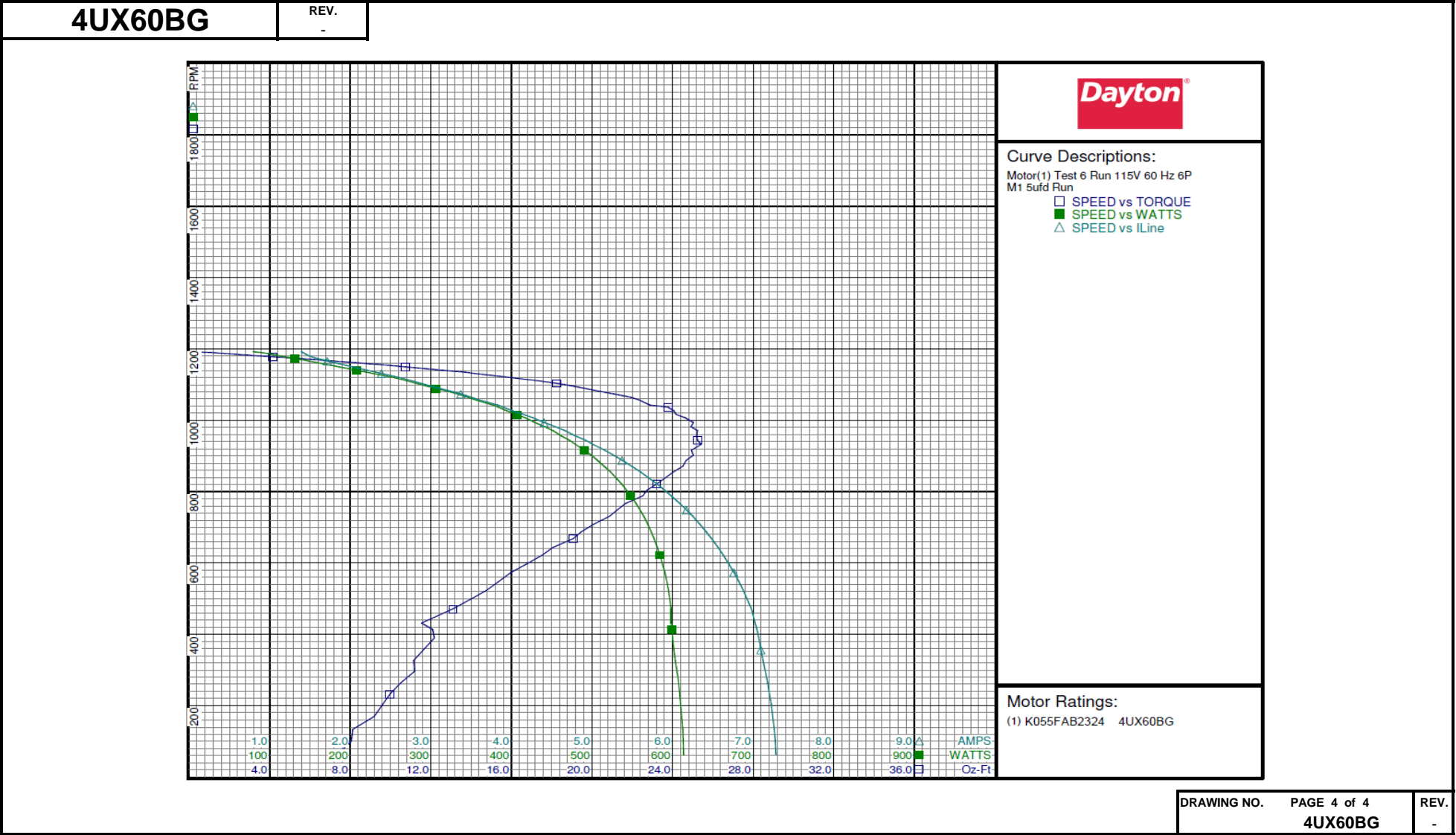
Test Type: Run
Test Number: 6
Poles: 6
Volts: 115
Hz: 60
Rotation:
Special Cond:
Speed Conn: M1
TestBoard: CMD InLine Three Phase #2 Fixture #1
Run Cap: 5
Start Cap: 0µfd
Environment: 22.4 Deg C 28 % RH 968 hPa
Tested: 2/12/2016 2:21:20 PM
Tested By: Navarro, Susana
Gear Ratio: 1:1
Bearing Friction: -0.13 Oz-Ft
Windage Torque: -0.75 Oz-Ft

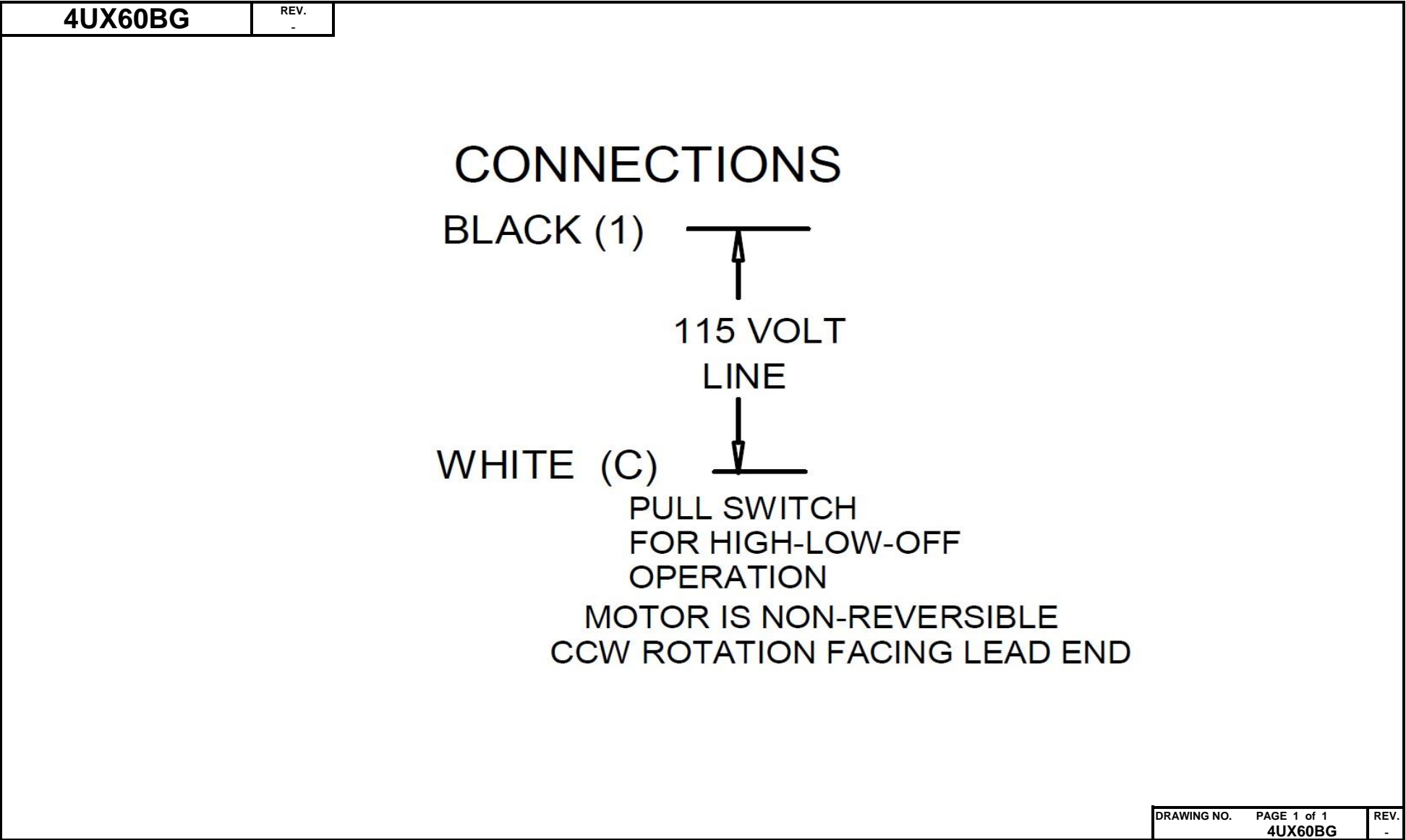
Special Points	Vline (V)	Vaux (V)	Vcap (V)	Iline (A)	Watts	RPM	Tq (Oz-ft)	HP	Eff (%)	PF (%)
	115.0	264.9	372.5	1.391	79.2	1193	0.00	0.000	0.0	49.5
	115.0	262.8	368.3	1.412	91.3	1189	1.29	0.018	15.0	56.2
	115.0	259.6	362.5	1.463	106.4	1183	2.77	0.039	27.3	63.2
	115.0	255.6	354.9	1.554	124.8	1175	4.87	0.068	40.7	69.9
	115.0	250.9	345.1	1.717	148.5	1165	7.19	0.100	50.1	75.2
7.33 OZ-FT	115.0	250.7	344.5	1.728	149.9	1165	7.33	0.102	50.6	75.4
	115.0	246.1	334.9	1.936	175.5	1154	9.84	0.135	57.5	78.8
	115.0	239.0	323.3	2.213	208.0	1140	12.61	0.171	61.4	81.7
	115.0	229.7	310.1	2.542	245.8	1123	15.42	0.206	62.6	84.1
	115.0	219.0	296.5	2.877	282.0	1103	18.27	0.240	63.5	85.2
0.25 HP	115.0	214.3	290.9	3.025	297.4	1094	19.20	0.250	62.7	85.5
19.53 OZ-FT	115.0	212.4	288.6	3.086	303.7	1091	19.53	0.254	62.3	85.6
	115.0	207.5	282.8	3.239	319.6	1082	20.30	0.261	61.0	85.8
	115.0	194.9	269.0	3.613	356.3	1056	22.37	0.281	58.9	85.7
	115.0	181.5	255.1	4.012	394.0	1026	24.05	0.294	55.7	85.4
	115.0	167.6	242.3	4.408	429.2	993	25.03	0.296	51.4	84.7
	115.0	154.3	231.0	4.787	461.2	957	25.20	0.287	46.4	83.8
BDT OZ-FT	115.0	145.9	224.8	5.011	479.3	932	25.42	0.282	43.9	83.2
	115.0	140.6	221.1	5.157	490.4	916	24.93	0.272	41.3	82.7
	115.0	128.1	213.5	5.490	515.0	871	24.50	0.254	36.8	81.6
	115.0	116.0	207.6	5.806	536.8	821	23.21	0.227	31.5	80.4
	115.0	104.7	203.7	6.089	554.5	766	21.66	0.198	26.6	79.2
	115.0	94.5	201.4	6.342	569.3	707	20.05	0.169	22.1	78.1
	115.0	85.1	200.4	6.565	581.1	643	18.05	0.138	17.7	77.0
	115.0	76.4	200.3	6.760	590.3	573	15.97	0.109	13.8	75.9
	115.0	67.9	200.6	6.924	596.4	499	14.00	0.083	10.4	74.9
	115.0	59.8	201.5	7.048	599.4	413	12.09	0.059	7.4	74.0
	115.0	55.0	204.9	7.122	603.0	327	11.14	0.043	5.4	73.6
	115.0	52.6	209.5	7.200	608.6	233	9.98	0.028	3.4	73.5
	115.0	51.1	213.8	7.261	612.6	133	8.12	0.013	1.6	73.4

DRAWING NO. PAGE 3 of 4 REV.
4UX60BG -

Dayton Electric Mfg. Co. Lake Forest, IL 60045 USA

Performance Data





Dayton®



PEDESTAL FAN MOTOR

HP: 1/4**VOLTS:** 115**AMPS:** 3.1**RPM:** 1075 / 2 SPD**DUTY:** CONT**SF:** 1.0**KVA CODE:** A**ENCL:** OAO**THERMALLY PROTECTED:** AUTOMFG. NO.

PROT. CODE :

 7A010 AVG. F.L.
EFF.**MTR REF:** K55HXFAB-2324**[BAR CODE]**Part
No **4UX60BG****Disconnect Power Before Making Any
Electrical Connections or Changes**

CONNECTIONS

BLACK (1) 115 VOLT
LINEWHITE (C) **PULL SWITCH
FOR HIGH-LOW-OFF
OPERATION****MOTOR IS NON-REVERSIBLE
CCW ROTATION FACING LEAD END****Mfd for Dayton Electric Mfg. Co., Lake Forest, IL 60045 USA****Made in Mexico**