

# Cush-A-Clip® & Cush-A-Click

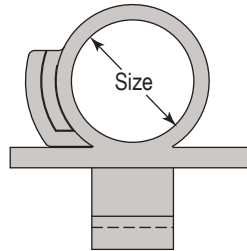


## Cush-A-Clip®



A Simple, Economical, Lightweight Hanger For Supporting Tubing

- Manufactured from polyamide alloy
- U.L. Rated
- Sizes from 3/8" to 1 1/8"
- One piece design makes installation a snap.
- No nuts to tighten, no parts to lose.
- Temperatures from -40°F to 275°F (-40°C to 135°C)
- Secure but non-tightening design allows for expansion, greatly reducing joint fractures



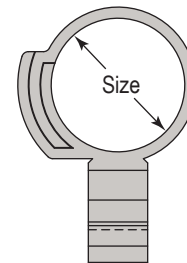
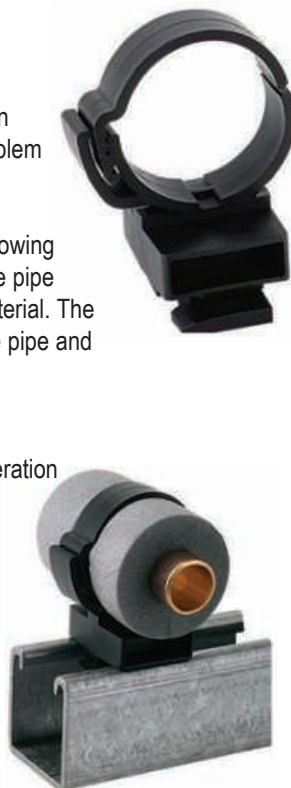
Part No.	Tube O.D.
RPC-3/8	3/8" (10mm)
RPC-1/2	1/2" (13mm)
RPC-5/8	5/8" (16mm)
RPC-3/4	3/4" (19mm)
RPC-7/8	7/8" (22mm)
RPC-1-1/8	1-1/8" (29mm)

## Cush-A-Click

The great advantage with the **Cush-A-Click** is it retains an unbroken vapor barrier seal, eliminating the problem of sweating on metal fittings.

The Cush-A-Click is ideal for the installation of refrigeration systems allowing the barrier seal to run the length of the pipe work without cutting the insulation material. The Cush-A-Click quickly secures both the pipe and the insulation.

- Time and labor savings
- Simple, secure installation of refrigeration and plumbing pipe work
- No break insulation material
- Corrosion resistance
- Light weight



Part No.	Standard Copper	Metric Copper	Copper Tube		Condensate Drain
	(no insulation)		with 3/8" (10mm) Insulation	with 1/2" (13mm) Insulation	
CAC12	3/4"	-	-	-	-
CAC14	7/8"	22mm	-	-	yes
CAC16	1"	-	1/4" tube	-	-
CAC18	1 1/8"	28mm	3/8" tube	-	-
CAC20	1 1/4"	-	1/2" tube	1/4" tube	-
CAC22	1 3/8"	-	5/8" tube	3/8" tube	yes
CAC24	1 1/2"	-	7/8" tube	5/8" tube	-
CAC26	1 5/8"	42mm	1 1/8" tube	3/4" tube	yes
CAC32	2"	-	-	7/8" tube	-
CAC34	2 1/8"	54mm	1 3/8" tube	1 1/8" tube	yes

Inside diameter: Certain clips have two or more positions to accommodate both metric and standard sizes

