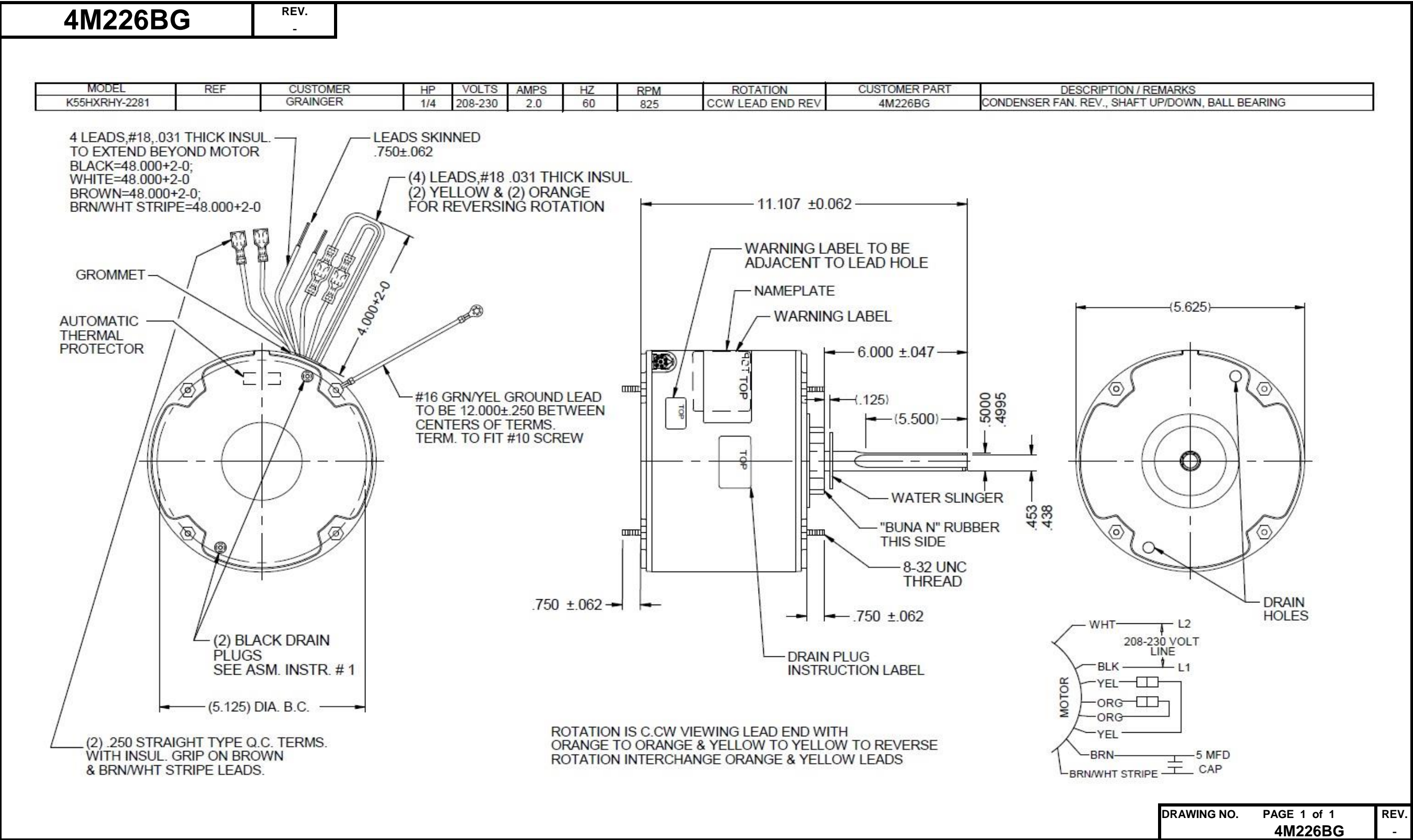


Dimensional Drawing



Performance Data



4M226BG

REV.
-

MOTOR PERFORMANCE

| | | | | | | | | |
|---------------------------|-------------------------|------|-------|--|--|--|-----|--|
| HP: | 1/4HP | | | | | | | |
| Poles: | 8P | | | | | | | |
| No. of Speeds: | 1 | | | | | | | |
| Volts: | 208 - 230 | 208 | 230 | | | | | |
| HZ: | 60 | 60 | 60 | | | | | |
| Service Factor: | 1 | | | | | | | |
| Efficiency: | @ Rated Load | | | | | | | |
| Power Factor: | @ Rated Load | | | | | | | |
| Amps: | @ No Load | | | | | | | |
| | @ Rated Load | 1.97 | 2 | | | | | |
| | @ Service Factor | 1.97 | 1.97 | | | | | |
| | @ Locked Rotor | 4.1 | 4.54 | | | | | |
| RPM: | @ Rated Load | 828 | 843 | | | | | |
| Ambient (°C): | 60 | | | | | | | |
| Altitude (FASL): | | | | | | | | |
| Torques: | Breakdown | 32.2 | 39.92 | | | | | |
| | Locked Rotor | 4 | 5.82 | | | | | |
| | Pull-Up | 4 | 5.82 | | | | | |
| | Rated Load | 26.4 | 27.4 | | | | | |
| | Service Factor | 26.4 | 26.4 | | | | | |
| Watts: | Rated Load | 340 | 367 | | | | | |
| KVA Code: | | | | | | | | |
| Temperature Rise: | @ Rated Load | TEAO | TEAO | | | | | |
| | @ Service Factor | | | | | | | |
| Thermal Protector: | Trip Temp (°C) | | | | | | | |
| Winding Material: | Start (Auxiliary) | | | | | | Cu | |
| | Run (Main) | | | | | | Cu | |
| Capacitor(s): | Start (MFD / Volts) | | | | | | N/A | |
| | No. of Start Capacitors | | | | | | | |
| | Run (MFD / Volts) | | | | | | N/A | |
| | No. of Run Capacitors | | | | | | | |

PERFORMANCE DATA:

| | | | | | | | | |
|--------------------------|------------------|--|--|--|--|--|--|--|
| HP: | | | | | | | | |
| Poles: | | | | | | | | |
| Volts: | | | | | | | | |
| HZ: | | | | | | | | |
| Efficiency: | @ Rated Load | | | | | | | |
| Power Factor: | @ Rated Load | | | | | | | |
| Amps: | @ No Load | | | | | | | |
| | @ Rated Load | | | | | | | |
| | @ Service Factor | | | | | | | |
| | @ Locked Rotor | | | | | | | |
| Torques: | @ Rated Load | | | | | | | |
| | Locked Rotor | | | | | | | |
| | Pull-Up | | | | | | | |
| | Rated Load | | | | | | | |
| | Service Factor | | | | | | | |
| Watts: | @ Rated Load | | | | | | | |
| Temperature Rise: | @ Rated Load | | | | | | | |
| | @ Service Factor | | | | | | | |

DRAWING NO. PAGE 1 of 1
4M226BG

REV.
-

Dayton Electric Mfg. Co. Lake Forest, IL 60045 USA

Performance Data



4M226BG

REV.
-

Dayton Manufacturing Company

Motor Description

Model: K055RHY228101 4M226BG
Motor ID:
Poles: 8
Volts: 208-230
Frequency: 60
HP: 0.25
Speed: 825
Phase: 1
Protector: 7AM036-A5

Test Conditions

Test Type: Start
Test Number: 3
Poles: 8
Volts: 208
Hz: 60
Rotation: ccwle
Special Cond:
Speed Conn:
TestBoard: CMD InLine Three Phase #1 Fixture #1
Run Cap: 5
Start Cap: 0µfd
Environment: 24.9 Deg C 62 % RH 963 hPa
Tested: 8/6/2015 12:14:53 PM
Tested By: Bribiesca, Griselda
Gear Ratio: 1:1
Bearing Friction: -0.47 Oz-Ft
Windage Torque: -0.97 Oz-Ft

| Special Points PUT OZ-FT | Vline (V) | Vaux (V) | Vcap (V) | Iline (A) | Watts | RPM | Tq (Oz-ft) | HP | Eff (%) | PF (%) |
|-----------------------------|-----------|----------|----------|-----------|-------|-----|------------|-------|---------|--------|
| | 208.0 | 45.9 | 238.7 | 4.066 | 588.7 | 15 | 4.00 | 0.001 | 0.1 | 69.6 |
| | 208.0 | 45.9 | 238.7 | 4.066 | 588.7 | 15 | 4.00 | 0.001 | 0.1 | 69.6 |
| | 208.0 | 47.2 | 235.6 | 4.052 | 587.5 | 95 | 5.06 | 0.006 | 0.7 | 69.7 |
| | 208.0 | 48.9 | 232.8 | 4.032 | 587.1 | 174 | 7.25 | 0.015 | 1.9 | 70.0 |
| | 208.0 | 51.3 | 229.9 | 4.003 | 586.7 | 241 | 8.18 | 0.023 | 3.0 | 70.5 |
| | 208.0 | 54.7 | 227.2 | 3.960 | 585.2 | 307 | 9.84 | 0.036 | 4.6 | 71.1 |
| | 208.0 | 58.9 | 224.8 | 3.910 | 584.0 | 369 | 12.44 | 0.055 | 7.0 | 71.8 |
| | 208.0 | 64.1 | 222.9 | 3.849 | 581.7 | 426 | 14.63 | 0.074 | 9.5 | 72.7 |
| | 208.0 | 70.8 | 221.3 | 3.771 | 577.9 | 479 | 17.04 | 0.097 | 12.5 | 73.7 |
| | 208.0 | 77.3 | 220.1 | 3.687 | 573.2 | 527 | 19.50 | 0.122 | 15.9 | 74.7 |
| | 208.0 | 85.5 | 219.5 | 3.588 | 566.4 | 573 | 21.51 | 0.147 | 19.3 | 75.9 |
| | 208.0 | 94.8 | 220.2 | 3.470 | 556.8 | 614 | 23.85 | 0.174 | 23.4 | 77.1 |
| | 208.0 | 105.0 | 222.1 | 3.338 | 544.4 | 652 | 26.12 | 0.203 | 27.8 | 78.4 |
| | 208.0 | 116.2 | 225.2 | 3.195 | 529.4 | 685 | 27.58 | 0.225 | 31.7 | 79.7 |
| | 208.0 | 123.1 | 227.4 | 3.104 | 519.6 | 704 | 28.98 | 0.243 | 34.9 | 80.5 |
| | 208.0 | 141.9 | 237.7 | 2.838 | 484.5 | 744 | 30.70 | 0.272 | 41.9 | 82.1 |
| | 208.0 | 155.4 | 247.0 | 2.641 | 455.6 | 768 | 30.75 | 0.281 | 46.1 | 82.9 |
| | 208.0 | 169.3 | 258.1 | 2.428 | 422.0 | 791 | 30.23 | 0.285 | 50.3 | 83.5 |
| | 208.0 | 182.7 | 270.6 | 2.218 | 385.4 | 810 | 28.62 | 0.276 | 53.4 | 83.5 |
| | 208.0 | 196.0 | 284.3 | 2.004 | 345.5 | 827 | 26.11 | 0.257 | 55.5 | 82.9 |
| | 208.0 | 207.9 | 298.0 | 1.808 | 305.6 | 841 | 24.05 | 0.241 | 58.8 | 81.3 |
| | 208.0 | 219.4 | 311.5 | 1.631 | 265.6 | 855 | 19.22 | 0.196 | 54.9 | 78.3 |
| | 208.0 | 228.2 | 322.9 | 1.490 | 229.4 | 865 | 15.62 | 0.161 | 52.3 | 74.0 |
| | 208.0 | 235.0 | 331.9 | 1.387 | 199.6 | 873 | 11.84 | 0.123 | 46.0 | 69.2 |
| | 208.0 | 240.3 | 339.9 | 1.315 | 172.5 | 881 | 8.39 | 0.088 | 38.1 | 63.1 |
| | 208.0 | 245.3 | 347.1 | 1.266 | 148.9 | 886 | 5.24 | 0.055 | 27.7 | 56.6 |
| | 208.0 | 247.9 | 351.9 | 1.240 | 130.8 | 891 | 2.27 | 0.024 | 13.7 | 50.7 |
| | 208.0 | 250.4 | 355.8 | 1.230 | 117.9 | 893 | 0.66 | 0.007 | 4.5 | 46.1 |
| | 208.0 | 250.9 | 356.6 | 1.227 | 115.2 | 895 | 0.27 | 0.003 | 1.8 | 45.1 |

| | | |
|-------------|-------------|------|
| DRAWING NO. | PAGE 1 of 8 | REV. |
| 4M226BG | | - |

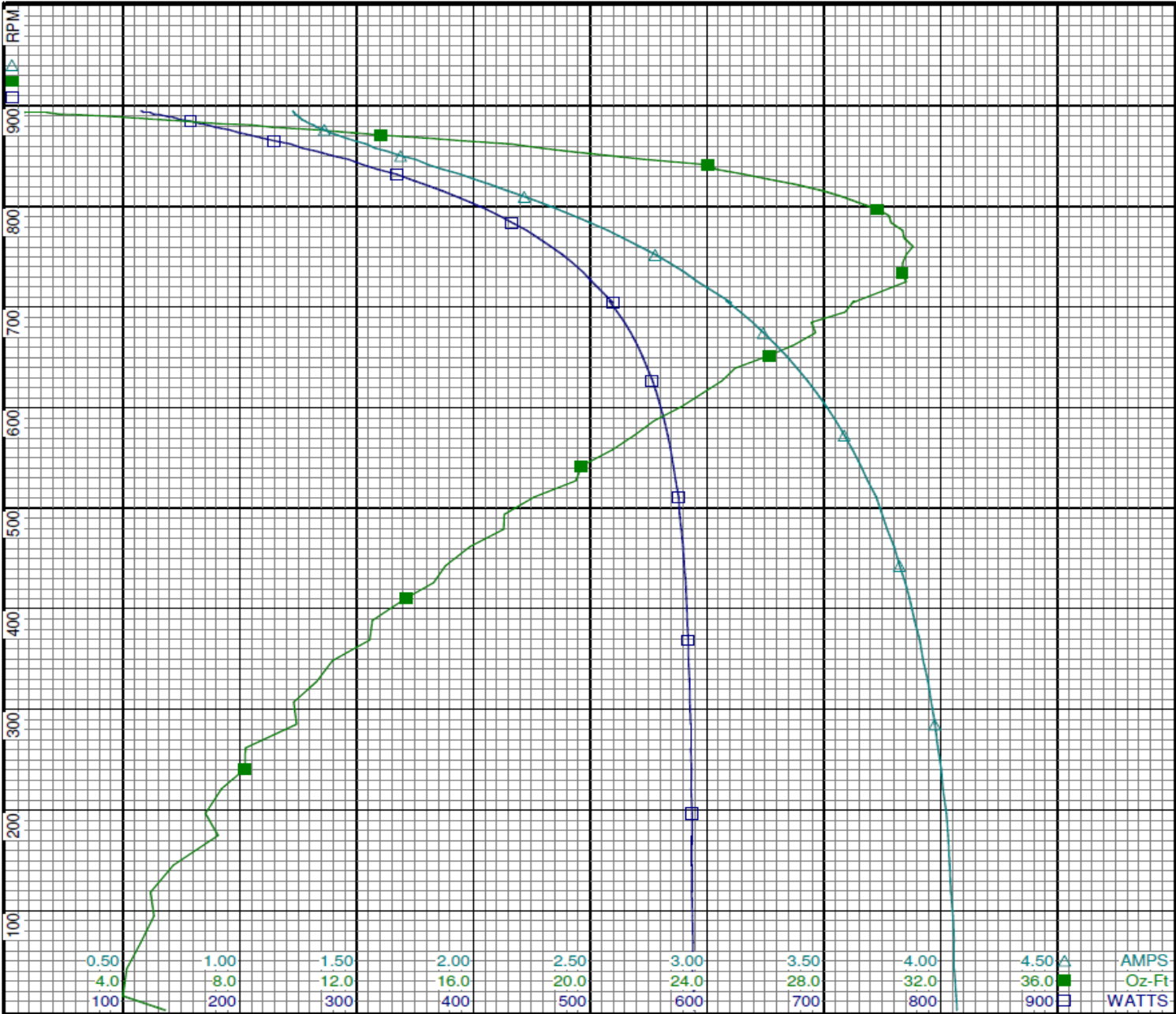
Dayton Electric Mfg. Co. Lake Forest, IL 60045 USA

Performance Data



4M226BG

REV.
-



Curve Descriptions:
Motor(1) Test 3 Start 208V 60 Hz 8P
ccwle 5ufd Run
□ SPEED vs WATTS
■ SPEED vs TORQUE
△ SPEED vs IL

Motor Ratings:
K055RHY228101 4M226BG

Performance Data



4M226BG

REV.
-

Dayton Manufacturing Company

Motor Description

Model: K055RHY228101 4M226BG
Motor ID:
Poles: 8
Volts: 208-230
Frequency: 60
HP: 0.25
Speed: 825
Phase: 1
Protector: 7AM036-A5

Test Conditions

Test Type: Run
Test Number: 7
Poles: 8
Volts: 208
Hz: 60
Rotation: ccwle
Special Cond:
Speed Conn:
TestBoard: CMD InLine Three Phase #1 Fixture #1
Run Cap: 5
Start Cap: 0µfd
Environment: 24.9 Deg C 62 % RH 963 hPa
Tested: 8/6/2015 12:13:38 PM
Tested By: Bribiesca, Griselda
Gear Ratio: 1:1
Bearing Friction: -0.51 Oz-Ft
Windage Torque: -1.07 Oz-Ft

| Special Points | Vline (V) | Vaux (V) | Vcap (V) | Iline (A) | Watts | RPM | Tq (Oz-ft) | HP | Eff (%) | PF (%) |
|----------------|-----------|----------|----------|-----------|-------|-----|------------|-------|---------|--------|
| | 208.0 | 250.7 | 356.7 | 1.229 | 112.3 | 894 | 0.00 | 0.000 | 0.0 | 43.9 |
| | 208.0 | 248.5 | 353.0 | 1.240 | 125.8 | 891 | 2.11 | 0.022 | 13.3 | 48.8 |
| | 208.0 | 245.7 | 348.0 | 1.260 | 143.9 | 887 | 4.95 | 0.052 | 27.1 | 54.9 |
| | 208.0 | 241.9 | 341.8 | 1.301 | 166.0 | 880 | 7.50 | 0.079 | 35.3 | 61.3 |
| | 208.0 | 237.1 | 334.5 | 1.370 | 193.3 | 874 | 11.30 | 0.118 | 45.3 | 67.8 |
| | 208.0 | 230.0 | 325.0 | 1.468 | 222.6 | 865 | 15.14 | 0.156 | 52.3 | 72.9 |
| | 208.0 | 220.3 | 312.2 | 1.622 | 263.8 | 854 | 19.55 | 0.199 | 56.2 | 78.2 |
| | 208.0 | 210.3 | 300.7 | 1.779 | 298.7 | 842 | 23.70 | 0.238 | 59.3 | 80.7 |
| | 208.0 | 198.2 | 286.3 | 1.976 | 340.4 | 828 | 26.47 | 0.261 | 57.2 | 82.8 |
| | 208.0 | 184.1 | 271.7 | 2.200 | 382.6 | 811 | 29.68 | 0.286 | 55.8 | 83.6 |
| | 208.0 | 170.4 | 258.8 | 2.416 | 420.3 | 791 | 31.34 | 0.295 | 52.4 | 83.6 |
| | 208.0 | 156.4 | 247.2 | 2.633 | 454.9 | 770 | 32.18 | 0.295 | 48.4 | 83.1 |
| BDT OZ-FT | 208.0 | 142.6 | 237.8 | 2.830 | 484.1 | 745 | 32.26 | 0.286 | 44.1 | 82.2 |
| | 208.0 | 142.6 | 237.8 | 2.830 | 484.1 | 745 | 32.26 | 0.286 | 44.1 | 82.2 |
| | 208.0 | 129.3 | 230.2 | 3.022 | 509.5 | 717 | 31.23 | 0.267 | 39.1 | 81.1 |
| | 208.0 | 116.8 | 224.8 | 3.190 | 529.6 | 687 | 29.83 | 0.244 | 34.4 | 79.8 |
| | 208.0 | 105.1 | 221.3 | 3.347 | 546.0 | 653 | 27.88 | 0.217 | 29.6 | 78.4 |
| | 208.0 | 94.9 | 219.6 | 3.476 | 557.9 | 616 | 25.86 | 0.190 | 25.4 | 77.2 |
| | 208.0 | 85.6 | 219.0 | 3.592 | 567.1 | 575 | 23.49 | 0.161 | 21.2 | 75.9 |
| | 208.0 | 77.4 | 219.6 | 3.691 | 573.9 | 531 | 21.24 | 0.134 | 17.4 | 74.8 |
| | 208.0 | 70.1 | 220.8 | 3.778 | 578.7 | 482 | 18.79 | 0.108 | 13.9 | 73.7 |
| | 208.0 | 64.3 | 222.6 | 3.848 | 582.0 | 430 | 16.51 | 0.084 | 10.8 | 72.7 |
| | 208.0 | 59.3 | 224.6 | 3.905 | 584.1 | 373 | 14.37 | 0.064 | 8.2 | 71.9 |
| | 208.0 | 54.6 | 227.0 | 3.956 | 585.8 | 313 | 12.71 | 0.047 | 6.0 | 71.2 |
| | 208.0 | 51.6 | 229.8 | 3.989 | 586.4 | 247 | 10.78 | 0.032 | 4.0 | 70.7 |
| | 208.0 | 49.1 | 232.6 | 4.018 | 587.2 | 177 | 8.99 | 0.019 | 2.4 | 70.3 |
| | 208.0 | 47.2 | 235.5 | 4.039 | 587.9 | 102 | 7.84 | 0.009 | 1.2 | 70.0 |

DRAWING NO. PAGE 3 of 8 REV.
4M226BG -

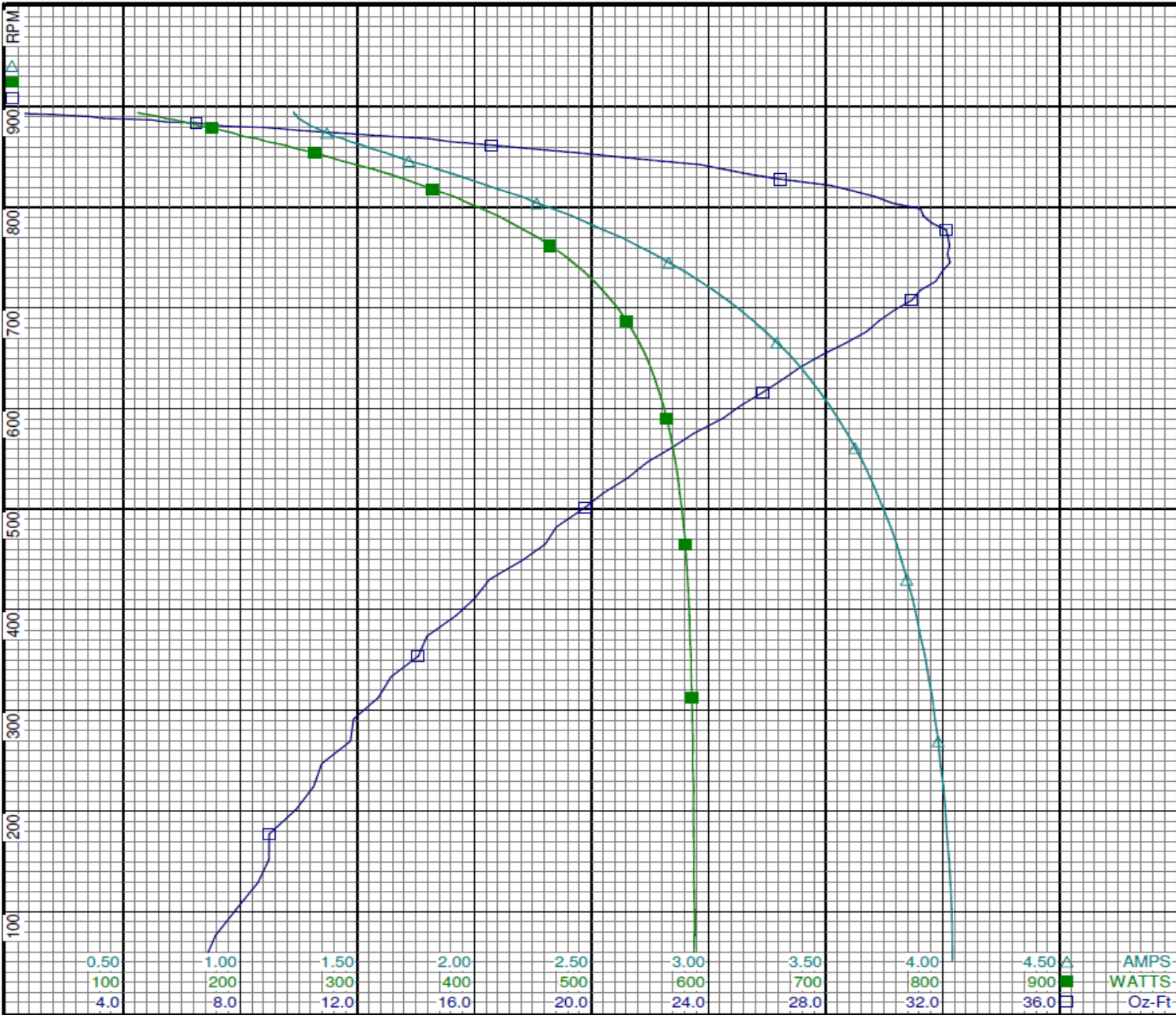
Dayton Electric Mfg. Co. Lake Forest, IL 60045 USA

Performance Data



4M226BG

REV.
-



Curve Descriptions:
Motor(1) Test 7 Run 208V 60 Hz 8P
ccwle 5ufd Run
□ SPEED vs TORQUE
■ SPEED vs WATTS
△ SPEED vs ILine

Motor Ratings:
K055RHY228101 4M226BG

AMPS
WATTS
Oz-Ft

Performance Data



4M226BG

REV.
-

Dayton Manufacturing Company

Motor Description

Model: K055RHY228101 4M226BG
Motor ID:
Poles: 8
Volts: 208-230
Frequency: 60
HP: 0.25
Speed: 825
Phase: 1
Protector: 7AM036-A5

Test Conditions

Test Type: Start
Test Number: 4
Poles: 8
Volts: 230
Hz: 60
Rotation: ccwle
Special Cond:
Speed Conn:
TestBoard: CMD InLine Three Phase #1 Fixture #1
Run Cap: 5
Start Cap: 0µfd
Environment: 24.9 Deg C 62 % RH 963 hPa
Tested: 8/6/2015 12:16:16 PM
Tested By: Bribiesca, Griselda
Gear Ratio: 1:1
Bearing Friction: -0.45 Oz-Ft
Windage Torque: -0.88 Oz-Ft

| Special Points PUT OZ-FT | Vline (V) | Vaux (V) | Vcap (V) | Iline (A) | Watts | RPM | Tq (Oz-ft) | HP | Eff (%) | PF (%) |
|-----------------------------|-----------|----------|----------|-----------|-------|-----|------------|-------|---------|--------|
| | 230.0 | 51.1 | 264.5 | 4.544 | 732.2 | 9 | 5.82 | 0.001 | 0.1 | 70.1 |
| | 230.0 | 51.1 | 264.5 | 4.544 | 732.2 | 9 | 5.82 | 0.001 | 0.1 | 70.1 |
| | 230.0 | 52.3 | 260.4 | 4.530 | 731.7 | 96 | 6.70 | 0.008 | 0.8 | 70.2 |
| | 230.0 | 54.3 | 257.1 | 4.504 | 731.3 | 173 | 8.98 | 0.018 | 1.9 | 70.6 |
| | 230.0 | 57.1 | 254.1 | 4.470 | 730.2 | 242 | 10.86 | 0.031 | 3.2 | 71.0 |
| | 230.0 | 61.4 | 251.1 | 4.418 | 728.1 | 309 | 12.92 | 0.048 | 4.9 | 71.7 |
| | 230.0 | 65.8 | 248.7 | 4.365 | 726.3 | 369 | 15.78 | 0.069 | 7.1 | 72.4 |
| | 230.0 | 71.9 | 246.5 | 4.289 | 722.4 | 428 | 19.06 | 0.097 | 10.0 | 73.2 |
| | 230.0 | 79.2 | 244.9 | 4.200 | 717.0 | 480 | 21.72 | 0.124 | 12.9 | 74.2 |
| | 230.0 | 86.5 | 243.6 | 4.104 | 710.3 | 529 | 24.51 | 0.154 | 16.2 | 75.2 |
| | 230.0 | 95.8 | 243.5 | 3.987 | 700.4 | 574 | 27.30 | 0.186 | 19.9 | 76.4 |
| | 230.0 | 106.4 | 244.5 | 3.851 | 687.2 | 615 | 30.18 | 0.221 | 24.0 | 77.6 |
| | 230.0 | 117.8 | 246.7 | 3.700 | 670.8 | 653 | 32.82 | 0.255 | 28.4 | 78.8 |
| | 230.0 | 130.1 | 250.5 | 3.536 | 650.9 | 686 | 35.24 | 0.288 | 33.0 | 80.0 |
| | 230.0 | 143.6 | 256.6 | 3.349 | 625.1 | 716 | 36.89 | 0.315 | 37.5 | 81.2 |
| | 230.0 | 158.3 | 264.9 | 3.140 | 593.6 | 745 | 38.04 | 0.337 | 42.4 | 82.2 |
| | 230.0 | 173.1 | 275.3 | 2.919 | 556.9 | 769 | 38.05 | 0.348 | 46.7 | 82.9 |
| | 230.0 | 188.5 | 287.9 | 2.678 | 513.5 | 791 | 37.36 | 0.352 | 51.1 | 83.4 |
| | 230.0 | 202.9 | 301.6 | 2.446 | 467.4 | 811 | 35.06 | 0.338 | 54.0 | 83.1 |
| | 230.0 | 213.1 | 312.7 | 2.282 | 429.9 | 826 | 31.75 | 0.312 | 54.1 | 81.9 |
| | 230.0 | 228.3 | 329.4 | 2.025 | 375.1 | 842 | 28.32 | 0.284 | 56.5 | 80.5 |
| | 230.0 | 240.0 | 344.1 | 1.845 | 326.2 | 855 | 23.42 | 0.238 | 54.5 | 76.9 |
| | 230.0 | 249.7 | 356.4 | 1.711 | 285.1 | 865 | 18.44 | 0.190 | 49.7 | 72.4 |
| | 230.0 | 256.3 | 366.1 | 1.619 | 247.7 | 874 | 14.47 | 0.151 | 45.3 | 66.5 |
| | 230.0 | 261.3 | 374.3 | 1.555 | 213.3 | 880 | 10.17 | 0.107 | 37.3 | 59.6 |
| | 230.0 | 265.0 | 380.2 | 1.523 | 188.3 | 887 | 6.13 | 0.065 | 25.6 | 53.8 |
| | 230.0 | 268.1 | 385.5 | 1.509 | 167.6 | 891 | 2.96 | 0.031 | 14.0 | 48.3 |
| | 230.0 | 270.1 | 388.7 | 1.508 | 155.0 | 894 | 0.85 | 0.009 | 4.3 | 44.7 |
| | 230.0 | 270.7 | 389.9 | 1.509 | 149.9 | 896 | 0.00 | 0.000 | 0.0 | 43.2 |

| | | |
|-------------|-------------|------|
| DRAWING NO. | PAGE 5 of 8 | REV. |
| 4M226BG | | - |

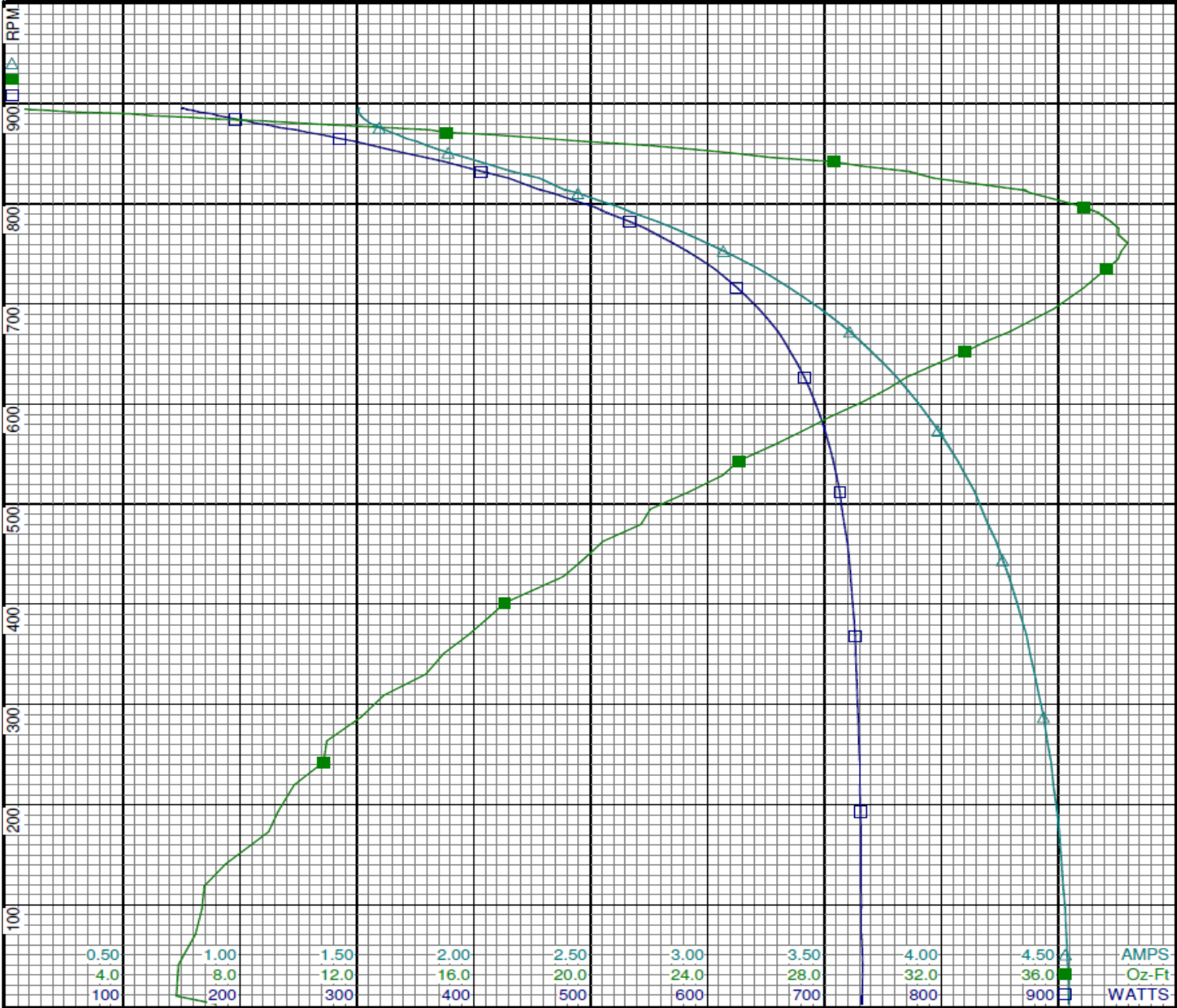
Dayton Electric Mfg. Co. Lake Forest, IL 60045 USA

Performance Data



4M226BG

REV.
-



Curve Descriptions:
Motor(1) Test 4 Start 230V 60 Hz 8P
ccwle 5ufd Run
□ SPEED vs WATTS
■ SPEED vs TORQUE
△ SPEED vs ILine

Motor Ratings:
K055RHY228101 4M226BG

Performance Data



4M226BG

REV.
-

Dayton Manufacturing Company

Motor Description

Model: K055RHY228101 4M226BG
Motor ID:
Poles: 8
Volts: 208-230
Frequency: 60
HP: 0.25
Speed: 825
Phase: 1
Protector: 7AM036-A5

Test Conditions

Test Type: Run
Test Number: 8
Poles: 8
Volts: 230
Hz: 60
Rotation: ccwle
Special Cond:
Speed Conn:
TestBoard: CMD InLine Three Phase #1 Fixture #1
Run Cap: 5
Start Cap: 0µfd
Environment: 24.9 Deg C 62 % RH 963 hPa
Tested: 8/6/2015 12:12:28 PM
Tested By: Bribiesca, Griselda
Gear Ratio: 1:1
Bearing Friction: -0.89 Oz-Ft
Windage Torque: -1.27 Oz-Ft

| Special Points | Vline (V) | Vaux (V) | Vcap (V) | Iline (A) | Watts | RPM | Tq (Oz-ft) | HP | Eff (%) | PF (%) |
|----------------|-----------|----------|----------|-----------|-------|-----|------------|-------|---------|--------|
| | 230.0 | 270.3 | 389.5 | 1.514 | 146.4 | 894 | 0.00 | 0.000 | 0.0 | 42.0 |
| | 230.0 | 268.6 | 386.0 | 1.511 | 161.7 | 891 | 2.34 | 0.025 | 11.5 | 46.5 |
| | 230.0 | 265.8 | 380.8 | 1.524 | 184.4 | 887 | 5.72 | 0.060 | 24.4 | 52.6 |
| | 230.0 | 262.5 | 375.5 | 1.550 | 206.1 | 881 | 9.23 | 0.097 | 35.0 | 57.8 |
| | 230.0 | 257.2 | 367.3 | 1.607 | 238.1 | 874 | 13.26 | 0.138 | 43.2 | 64.4 |
| | 230.0 | 251.0 | 357.9 | 1.701 | 278.6 | 865 | 18.43 | 0.190 | 50.8 | 71.2 |
| | 230.0 | 241.5 | 345.9 | 1.836 | 320.8 | 854 | 23.69 | 0.241 | 56.0 | 76.0 |
| | 230.0 | 230.7 | 332.2 | 2.003 | 366.6 | 843 | 27.45 | 0.275 | 56.0 | 79.6 |
| | 230.0 | 217.2 | 316.7 | 2.217 | 417.9 | 828 | 32.84 | 0.324 | 57.8 | 82.0 |
| | 230.0 | 202.9 | 301.3 | 2.457 | 469.0 | 811 | 36.25 | 0.350 | 55.7 | 83.0 |
| | 230.0 | 188.4 | 287.3 | 2.694 | 516.1 | 791 | 38.61 | 0.364 | 52.6 | 83.3 |
| | 230.0 | 173.3 | 274.7 | 2.935 | 559.0 | 770 | 39.71 | 0.364 | 48.5 | 82.8 |
| BDT OZ-FT | 230.0 | 168.3 | 270.8 | 3.012 | 572.4 | 762 | 39.92 | 0.362 | 47.2 | 82.6 |
| | 230.0 | 158.1 | 263.9 | 3.164 | 597.0 | 745 | 39.56 | 0.351 | 43.9 | 82.0 |
| | 230.0 | 143.4 | 255.5 | 3.374 | 628.5 | 718 | 38.77 | 0.331 | 39.3 | 81.0 |
| | 230.0 | 129.6 | 249.3 | 3.567 | 654.6 | 687 | 37.14 | 0.304 | 34.6 | 79.8 |
| | 230.0 | 116.8 | 245.3 | 3.739 | 675.0 | 653 | 34.57 | 0.269 | 29.7 | 78.5 |
| | 230.0 | 105.1 | 243.2 | 3.890 | 691.2 | 616 | 32.14 | 0.236 | 25.4 | 77.3 |
| | 230.0 | 94.9 | 242.6 | 4.020 | 703.2 | 576 | 29.21 | 0.200 | 21.2 | 76.0 |
| | 230.0 | 85.9 | 243.0 | 4.133 | 712.1 | 531 | 26.23 | 0.166 | 17.4 | 74.9 |
| | 230.0 | 77.9 | 244.3 | 4.230 | 718.5 | 483 | 23.55 | 0.135 | 14.1 | 73.9 |
| | 230.0 | 71.0 | 246.1 | 4.314 | 723.4 | 431 | 20.62 | 0.106 | 10.9 | 72.9 |
| | 230.0 | 65.2 | 248.3 | 4.382 | 726.8 | 374 | 18.15 | 0.081 | 8.3 | 72.1 |
| | 230.0 | 60.4 | 251.0 | 4.437 | 729.2 | 313 | 15.65 | 0.058 | 6.0 | 71.4 |
| | 230.0 | 56.7 | 254.0 | 4.478 | 730.4 | 247 | 13.22 | 0.039 | 4.0 | 70.9 |
| | 230.0 | 54.1 | 257.0 | 4.508 | 731.3 | 178 | 11.17 | 0.024 | 2.4 | 70.5 |
| | 230.0 | 52.0 | 260.2 | 4.529 | 732.1 | 102 | 9.96 | 0.012 | 1.2 | 70.3 |

DRAWING NO. PAGE 7 of 8 REV.
4M226BG -

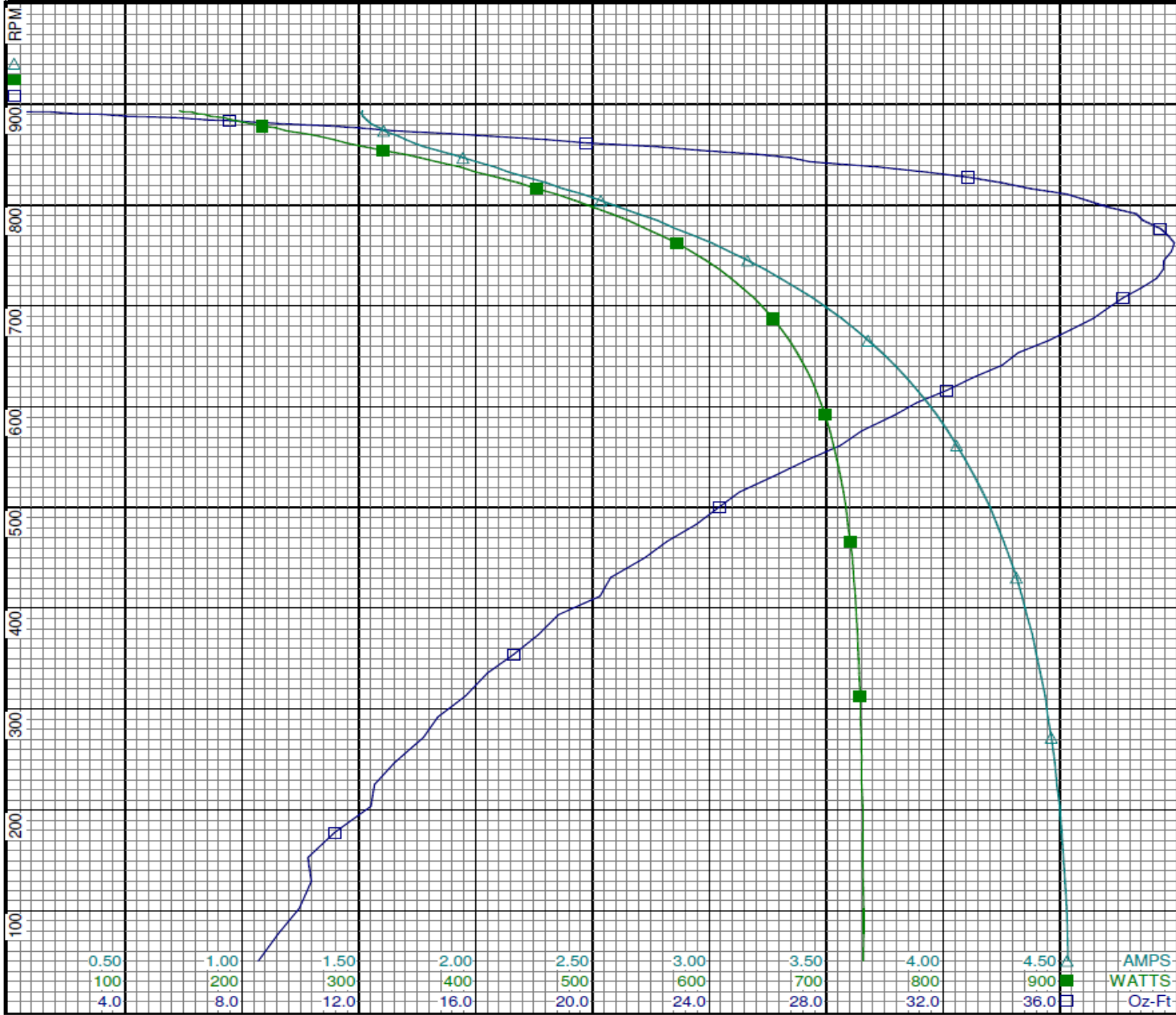
Dayton Electric Mfg. Co. Lake Forest, IL 60045 USA

Performance Data



4M226BG

REV.
-

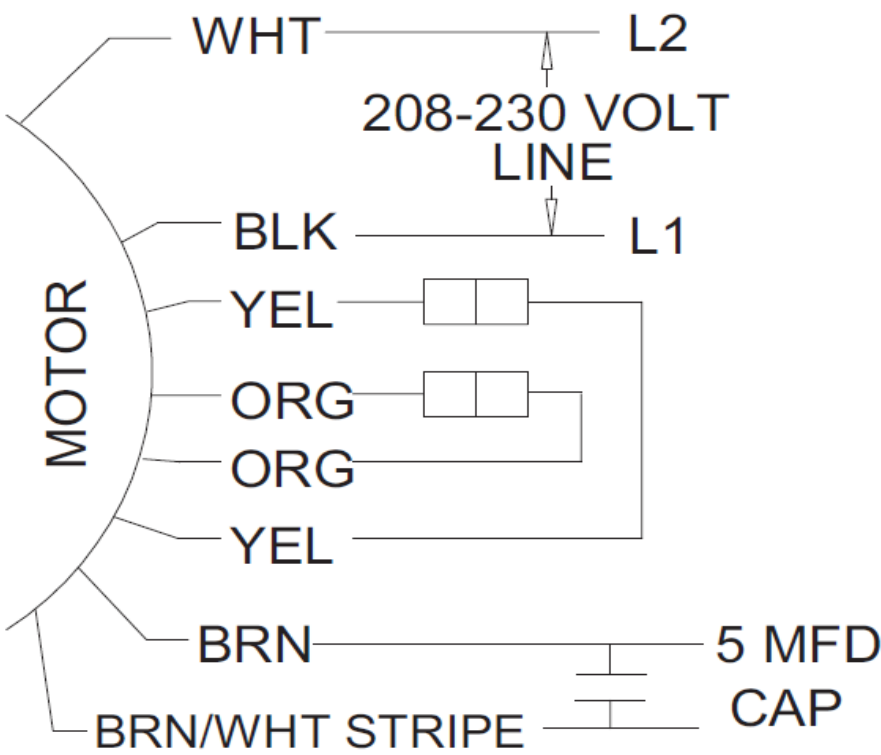


Curve Descriptions:
Motor(1) Test 8 Run 230V 60 Hz 8P
ccwle 5ufd Run
□ SPEED vs TORQUE
■ SPEED vs WATTS
△ SPEED vs ILine

Motor Ratings:
K055RHY228101 4M226BG

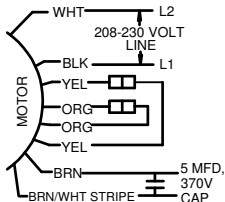
4M226BG

REV.
0



Dayton[®]

CONDENSER FAN MOTOR

HP: 1/4**VOLTS:** 208-230**AMPS:** 2.0**RPM:** 825**DUTY:** CONT**SF:** 1.00**KVA CODE:** B**ENCL:** TEAO**THERMALLY PROTECTED:** AUTO**MFG. NO.** ☐ ☐ **PROT. CODE** ☐ 7A010 **AVG. F.I.L.****MTR REF:** K55HXRHY-2281**PH:** 1**HZ:** 60**FR:** 48YZ**INS CL:** B**AMB:** 60 °C**SFA:** 2.0**RU**[®]
E37403**SP**[®]
258501**Part
No** 4M226BG**Disconnect Power Before Making Any Electrical
Connections or Changes**

ROTATION IS CCW LE
TO REVERSE ROTATION
INTERCHANGE ORG & YEL LEADS

Mfd for Dayton Electric Mfg. Co., Lake Forest, IL 60045 USA

Made in Mexico