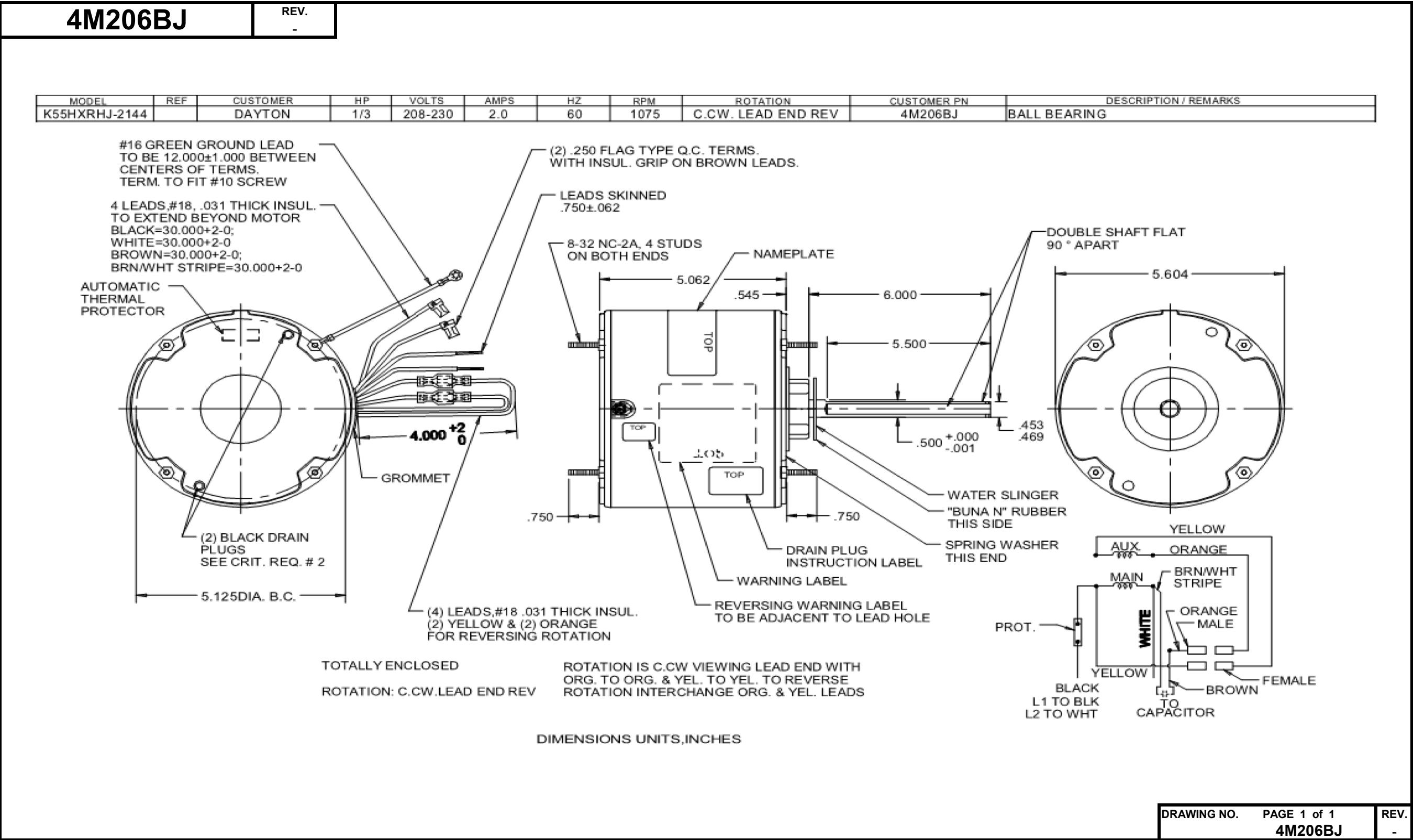


Dimensional Drawing



4M206BJ

REV.
-

SHADED-POLE & PSC MOTOR PERFORMANCE

HP:	1/3							
Poles:	4							
Ambient (°C):	40							
Altitude (FASL):	1000							
No. of Speeds:	1							
HIGH SPEED								
Volts:	208-230	115	208	230	277	460	100	200
HZ:	60	60	60	60	60	60	50	50
Service Factor:	1.0							
Efficiency:	@ Rated Load		58.2	59.0				
Power Factor:	@ Rated Load		93.9	93.0				
Amps:	@ No Load							
	@ Rated Load		2.2	2.5				
	@ Locked Rotor							
RPM:	@ Rated Load		1075	1075				
Torques: Oz.Ft. / Lb.In. (Circle One)	Breakdown		30.6	38.5				
	Locked Rotor			10.1				
	Pull-Up							
	Rated Load		26.4	32.8				
	Service Factor		1	1				
Watts:	Rated Load		433	531				
Temperature Rise:	@ Rated Load							
Thermal Protector:	Trip Temp (°C)		140~150	140~150				
Winding Material:	Start (Auxiliary)		AL	AL				
	Run (Main)		AL	AL				
Capacitor:	Run (MFD / Volts)	7.5 MFD 370V						
	No. of Run Capacitors	1						

MEDIUM-HIGH SPEED

HP:	1/3							
Volts:	208-230	115	208	230	277	460	100	200
HZ:	60	60	60	60	60	60	50	50
Efficiency:	@ Rated Load							
Power Factor:	@ Rated Load							
Amps:	@ No Load							
	@ Rated Load							
	@ Locked Rotor							
Torques: Oz.Ft. / Lb.In. (Circle One)	Breakdown							
	Locked Rotor							
	Pull-Up							
	Rated Load							
Watts:	Rated Load							
Temperature Rise:	@ Rated Load							

DRAWING NO. PAGE 1 REV.
4M206BJ -

4M206BJ

REV.
-

SHADED-POLE & PSC MOTOR PERFORMANCE

MEDIUM-LOW SPEED

HP:	1/3							
Volts:	208-230	115	208	230	277	460	100	200
HZ:	60	60	60	60	60	60	50	50
Efficiency:	@ Rated Load							
Power Factor:	@ Rated Load							
Amps:	@ No Load							
	@ Rated Load							
Torques: Oz.Ft. / Lb.In. (Circle One)	Breakdown							
	Locked Rotor							
	Pull-Up							
	Rated Load							
Watts:	Rated Load							
Temperature Rise:	@ Rated Load							
Watts:	Rated Load							
Temperature Rise:	@ Rated Load							
Thermal Protector:	Trip Temp (°C)							
Winding Material:	Start (Auxiliary)							
	Run (Main)							

LOW SPEED

HP:	1/3							
Volts:	208-230	115	208	230	277	460	100	200
HZ:	60	60	60	60	60	60	50	50
Efficiency:	@ Rated Load							
Power Factor:	@ Rated Load							
Amps:	@ No Load							
	@ Rated Load							
Torques: Oz.Ft. / Lb.In. (Circle One)	Breakdown							
	Locked Rotor							
	Pull-Up							
	Rated Load							
Watts:	Rated Load							
Temperature Rise:	@ Rated Load							

Notes:

DRAWING NO. PAGE 1 REV.
4M206BJ -

Performance Data



4M206BJ		REV. -											
Dayton Manufacturing Company													
Motor Description				Test Conditions									
Model: 4M206BJ		Test Type: Run		Run Cap: 7.5									
Motor ID: 1		Test Number: 4		Start Cap: 0µfd									
Poles: 6		Poles: 6		Environment: 19.5 Deg C 57 % RH 997 hPa									
Volts: 208-230		Volts: 230		Tested: 9/12/2013 8:25:58 AM									
Frequency: 60		Hz: 60		Tested By: Sharp, Gerald									
HP: 1/3		Rotation:		Gear Ratio: 1:1									
Speed: 1075		Special Cond:		Bearing Friction: -1.20 Oz-Ft									
Phase: 1		Speed Conn: M1		Windage Torque: -2.34 Oz-Ft									
Protector: 7AM036A5		TestBoard:		Amtps Performance Fixture #4									
Special Points	Vline(V)	Vaux(V)	Vcap(V)	Iline(A)	Imain(A)	Iaux(A)	Watts	RPM	Tq(Oz-ft)	HP	Eff(%)	PF(%)	Cap
	230.0	311.1	411.1	1.058	1.447	1.208	177.1	1184	0.00	0.000	0.0	72.8	7.8
	230.0	308.7	406.6	1.106	1.407	1.191	196.9	1172	2.47	0.034	13.1	77.4	7.8
	230.0	305.0	397.5	1.256	1.365	1.159	244.4	1168	7.38	0.103	31.3	84.6	7.7
	230.0	301.4	390.8	1.384	1.375	1.136	279.6	1158	11.18	0.154	41.1	87.9	7.7
	230.0	294.7	381.5	1.575	1.437	1.105	329.6	1147	16.25	0.222	50.2	91.0	7.7
	230.0	284.8	370.3	1.742	1.531	1.076	371.4	1134	20.41	0.276	55.4	92.7	7.7
	230.0	272.7	355.0	1.954	1.690	1.034	418.6	1118	24.73	0.329	58.7	93.1	7.7
	230.0	260.3	341.5	2.183	1.903	0.992	468.8	1099	28.76	0.376	59.9	93.4	7.7
	230.0	246.0	328.3	2.435	2.160	0.950	521.2	1079	32.19	0.414	59.2	93.1	7.7
1075 RPM	230.0	243.6	326.0	2.479	2.207	0.943	530.5	1075	32.78	0.419	59.0	93.0	7.7
	230.0	230.5	314.7	2.713	2.464	0.908	577.6	1053	35.26	0.442	57.1	92.6	7.7
	230.0	214.5	301.6	2.996	2.788	0.868	631.2	1025	37.26	0.455	53.7	91.6	7.6
	230.0	198.1	289.3	3.287	3.129	0.832	682.9	992	38.32	0.452	49.4	90.3	7.6
BDT OZ-FT	230.0	184.0	279.8	3.531	3.421	0.805	723.4	960	38.49	0.440	45.4	89.1	7.6
	230.0	182.0	278.6	3.565	3.462	0.801	728.8	955	38.48	0.438	44.8	88.9	7.6
	230.0	166.6	270.0	3.822	3.776	0.777	767.7	916	37.67	0.411	39.9	87.3	7.6
	230.0	152.2	263.4	4.055	4.064	0.760	799.5	874	36.35	0.378	35.3	85.7	7.6
	230.0	139.7	259.2	4.250	4.309	0.748	822.4	831	34.56	0.342	31.0	84.1	7.7
	230.0	128.9	256.6	4.412	4.516	0.741	839.9	786	32.56	0.305	27.1	82.8	7.7
	230.0	119.2	255.0	4.553	4.703	0.737	853.4	742	30.25	0.267	23.3	81.5	7.7
	230.0	111.0	254.2	4.669	4.860	0.735	860.0	696	27.88	0.231	20.0	80.1	7.7
	230.0	103.6	253.9	4.775	4.999	0.735	869.8	649	25.53	0.197	16.9	79.2	7.7
	230.0	96.7	254.2	4.872	5.125	0.736	875.2	601	23.35	0.167	14.2	78.1	7.7
	230.0	90.1	254.3	4.955	5.236	0.736	879.2	551	21.11	0.139	11.8	77.2	7.7
	230.0	84.3	255.3	5.028	5.335	0.738	883.3	499	18.45	0.109	9.2	76.4	7.7
	230.0	79.5	255.9	5.081	5.410	0.742	885.3	445	16.46	0.087	7.4	75.8	7.7
	230.0	74.7	258.0	5.138	5.491	0.746	887.3	388	14.70	0.068	5.7	75.1	7.7
	230.0	71.9	260.7	5.179	5.552	0.754	889.2	329	12.23	0.048	4.0	74.6	7.7
	230.0	70.0	262.7	5.222	5.609	0.761	891.9	269	11.42	0.037	3.1	74.3	7.7
	230.0	68.8	265.6	5.256	5.660	0.772	895.9	203	9.75	0.024	2.0	74.1	7.7
	230.0	68.3	269.0	5.283	5.703	0.782	897.4	136	8.18	0.013	1.1	73.9	7.7
	230.0	69.3	273.9	5.301	5.736	0.800	901.3	59	7.69	0.005	0.4	73.9	7.7
	230.0	70.5	277.9	5.314	5.763	0.816	904.6	5	11.29	0.001	0.1	74.0	7.8

DRAWING NO.

PAGE 1 of 2

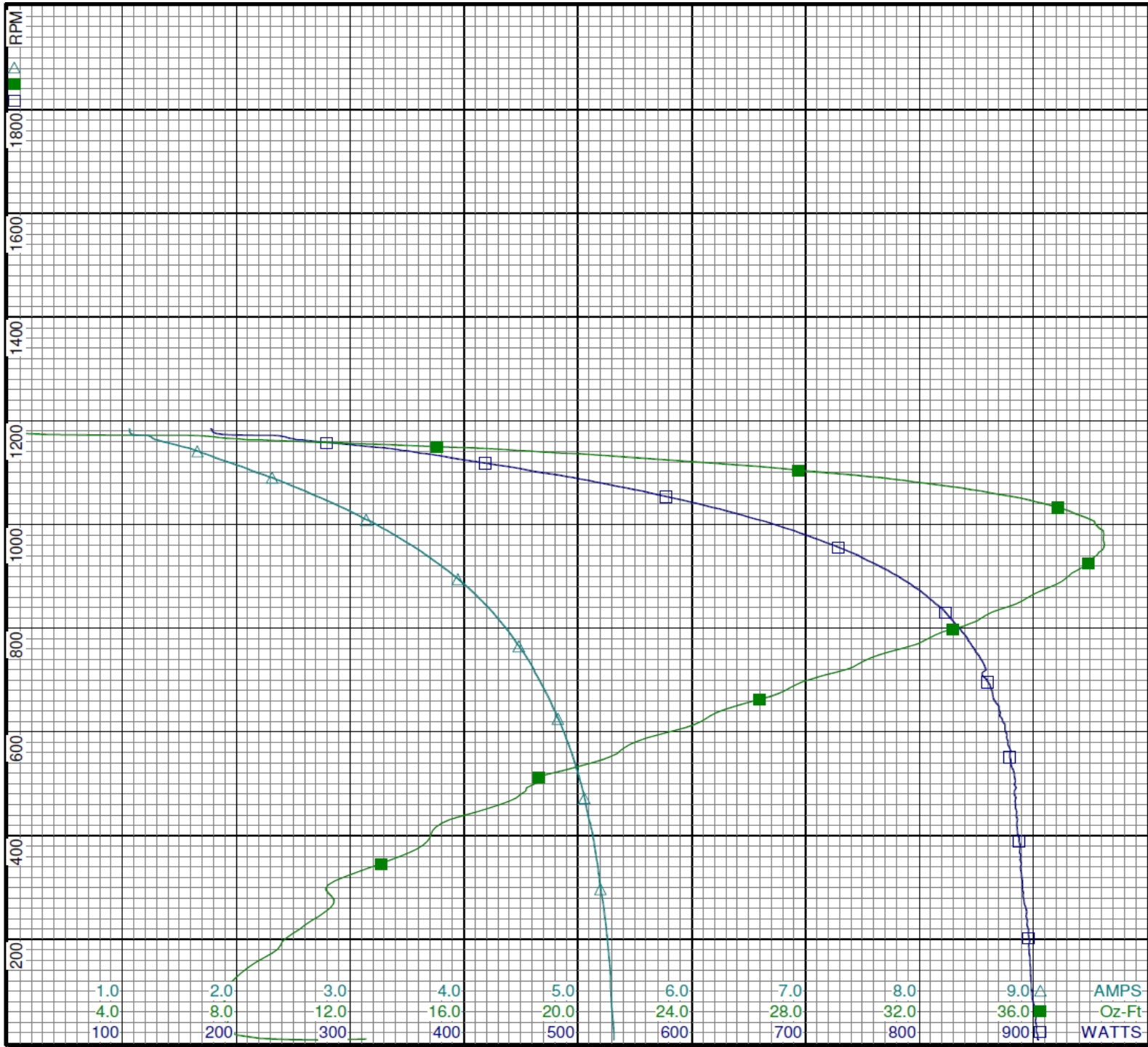
4M206BJ

RE

Performance Data



4M206BJ REV. -



Curve Descriptions:

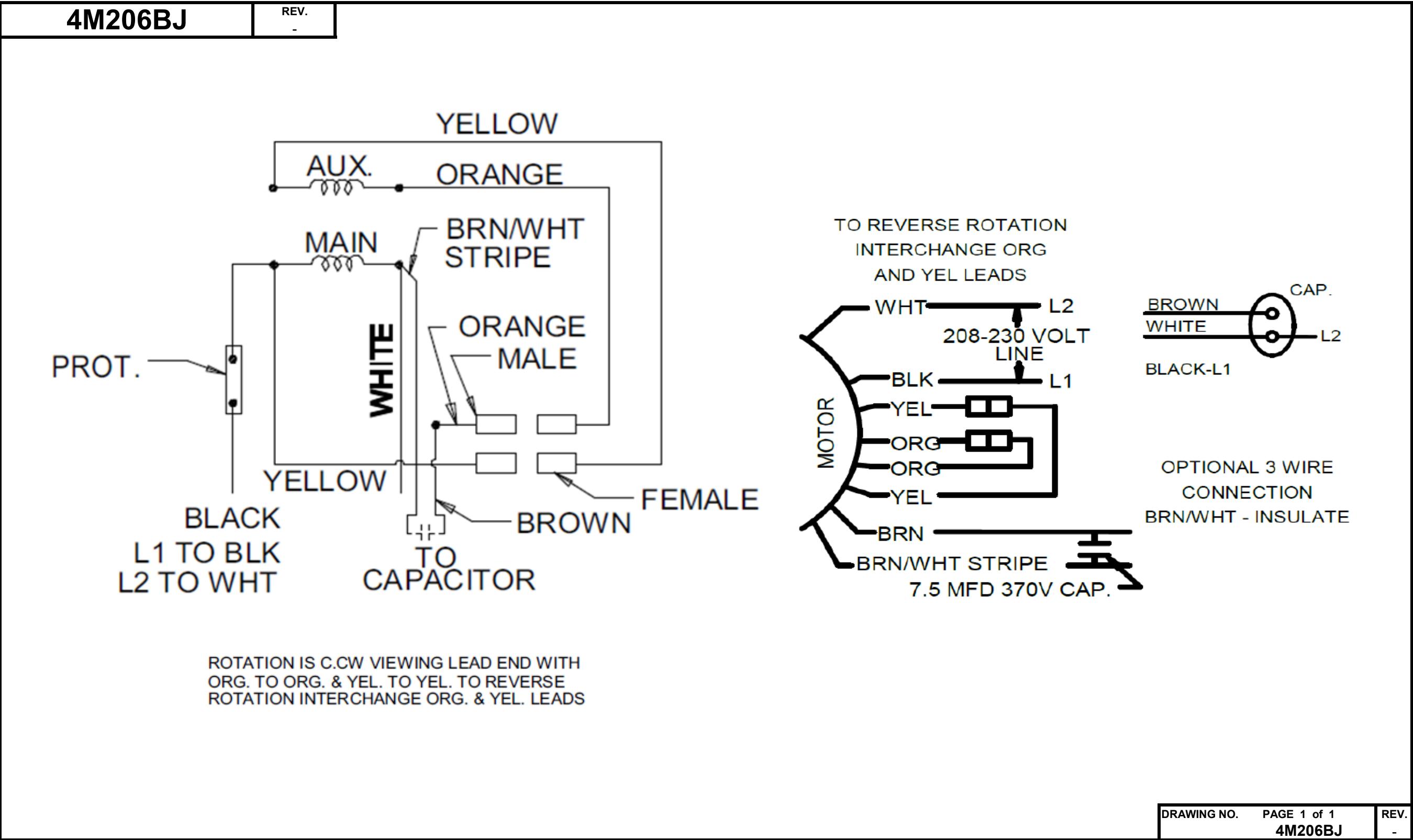
Motor(1) Test 4 Run 230V 60 Hz 6P
M1 7.5ufd Run

- SPEED vs WATTS
- SPEED vs TORQUE
- △ SPEED vs ILine

Motor Ratings:

4M206BJ

Wiring Diagram



Dayton Electric Mfg. Co. Lake Forest, IL 60045 USA

Dayton[®]

CONDENSER FAN MOTOR

HP: 1/3
VOLTS: 208-230

AMPS: 2.0

RPM: 1075

DUTY: CONT

SF: 1.0

KVA CODE:

ENCL: TEAO

THERMALLY PROTECTED: AUTO

MFG. NO. ☐ ☐ PROT. CODE: 7A010

MTR REF: K55HXRHJ-2144

PH: 1

HZ: 60

FR: 48YZ

INS CL: B

AMB: 60 °C

SFA:

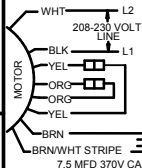
AVG.F.L
EFF.

BAR CODE

Part
No 4M206BJ

**Disconnect Power Before Making Any
Electrical Connections or Changes**

TO REVERSE ROTATION
INTERCHANGE ORG
AND YEL LEADS



E37403



258501

US PAT 7709992

Mfd for Dayton Electric Mfg. Co., Lake Forest, IL 60045 USA

Made In China