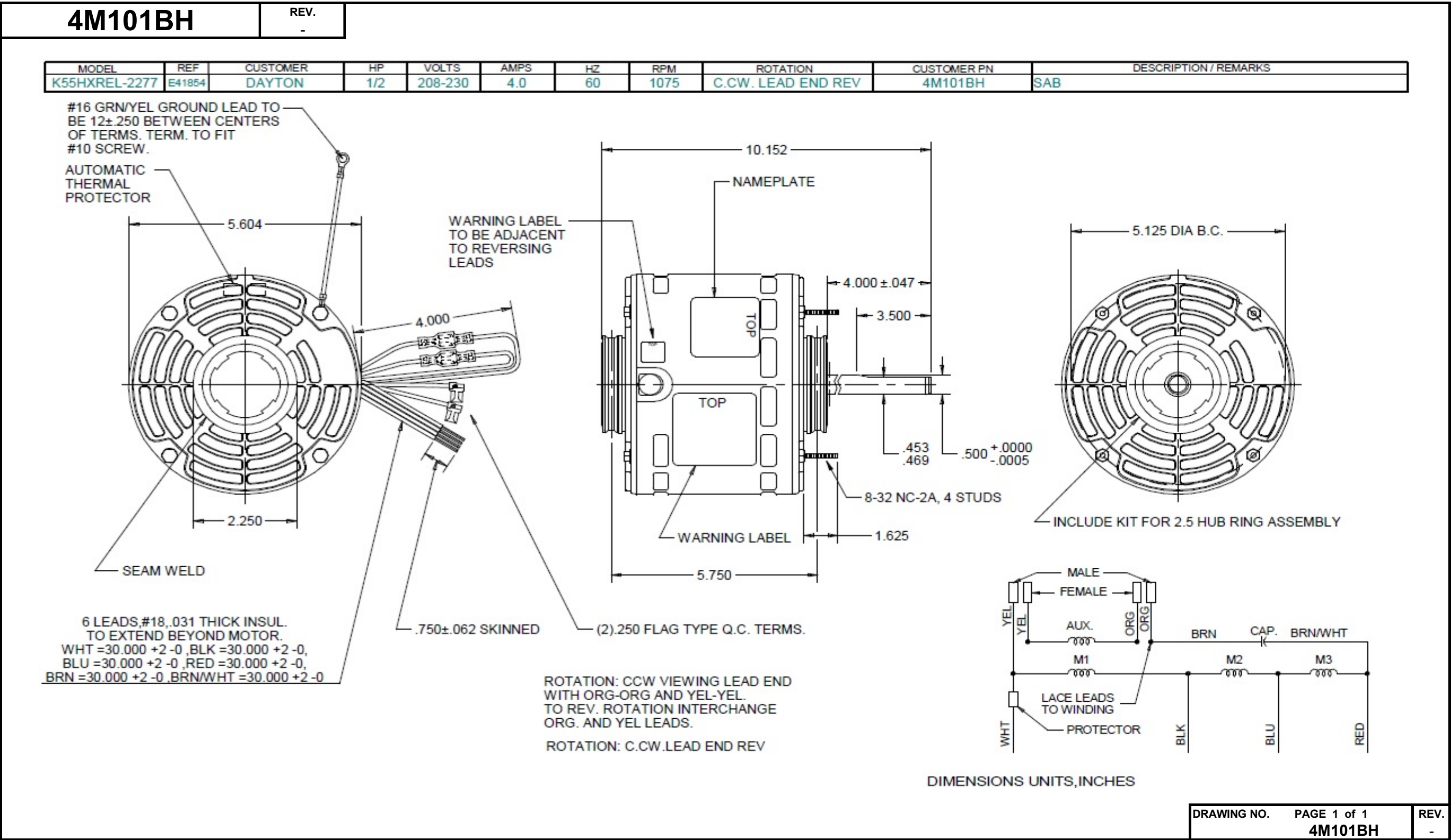


Dimensional Drawing



Performance Data



4M101BH

REV.

-

SHADED-POLE & PSC MOTOR PERFORMANCE

HP:	1/2							
Poles:	6							
Ambient (°C):	40							
Altitude (FASL):	1000							
No. of Speeds:	3							
HIGH SPEED								
Volts:	208~230	115	208	230	277	460	100	200
HZ:	60	60	60	60	60	60	50	50
Service Factor:	1.0							
Efficiency:	@ Rated Load		55.8	54.2				
Power Factor:	@ Rated Load		78.2	76.8				
Amps:	@ No Load							
	@ Rated Load		4.4	5.3				
	@ Locked Rotor			10.2				
RPM:	@ Rated Load		1075	1075				
Torques: Oz.Ft.	Breakdown		48.5	60.1				
	Locked Rotor			5				
	Pull-Up							
	Rated Load		41.9	53.2				
	Service Factor		1.0	1.0				
Watts:	Rated Load		716	936				
Temperature Rise:	@ Rated Load							
Thermal Protector:	Trip Temp (°C)		140~150	140~150				
Winding Material:	Start (Auxiliary)		Copper	Copper				
	Run (Main)		Copper	Copper				
Capacitor:	Run (MFD / Volts)	5.0 MFD 370V						
	No. of Run Capacitors	1						

MEDIUM-HIGH SPEED

HP:	1/2							
Volts:	208~230	115	208	230	277	460	100	200
HZ:	60	60	60	60	60	60	50	50
Efficiency:	@ Rated Load							
Power Factor:	@ Rated Load							
Amps:	@ No Load							
	@ Rated Load							
	@ Locked Rotor							
Torques: Oz.Ft.	Breakdown		28.5	35.5				
	Locked Rotor							
	Pull-Up							
	Rated Load							
Watts:	Rated Load							
Temperature Rise:	@ Rated Load							

DRAWING NO. PAGE 1 REV.
4M101BH -

Dayton Electric Mfg. Co. Lake Forest, IL 60045 USA

Performance Data



4M101BH

REV.

-

SHADED-POLE & PSC MOTOR PERFORMANCE

MEDIUM-LOW SPEED

HP:	1/2							
Volts:	208~230	115	208	230	277	460	100	200
HZ:	60	60	60	60	60	60	50	50
Efficiency:	@ Rated Load							
Power Factor:	@ Rated Load							
Amps:	@ No Load							
	@ Rated Load							
Torques: Oz.Ft.	Breakdown							
	Locked Rotor							
	Pull-Up							
	Rated Load							
Watts:	Rated Load							
Temperature Rise:	@ Rated Load							
Watts:	Rated Load							
Temperature Rise:	@ Rated Load							
Thermal Protector:	Trip Temp (°C)							
Winding Material:	Start (Auxiliary)							
	Run (Main)							

LOW SPEED

HP:	1/2							
Volts:	208~230	120	208	230	277	460	100	200
HZ:	60	60	60	60	60	60	50	50
Efficiency:	@ Rated Load							
Power Factor:	@ Rated Load							
Amps:	@ No Load							
	@ Rated Load							
Torques: Oz.Ft.	Breakdown		25.1	31.6				
	Locked Rotor							
	Pull-Up							
	Rated Load							
Watts:	Rated Load							
Temperature Rise:	@ Rated Load							

Notes:

DRAWING NO. PAGE 1 REV.
4M101BH -

Dayton Electric Mfg. Co. Lake Forest, IL 60045 USA

Performance Data



4M101BH		REV. -											
Dayton Manufacturing Company													
Filtered													
Motor Description				Test Conditions									
Model:		4M101BH		Test Type:		Run		Run Cap:		5			
Motor ID:		1 of 2		Test Number:		24		Start Cap:		0µfd			
Poles:		6		Poles:		6		Environment:					
Volts:		208-230		Volts:		230		Tested:		11/5/2015 4:14:58 PM			
Frequency:		60		Hz:		60		Tested By:		Liu, Bingmin			
HP:		1/2		Rotation:				Gear Ratio:		1:1			
Speed:		1075		Special Cond:				Bearing Friction:		-0.89 Oz-Ft			
Phase:		1		Speed Conn:		LOW		Windage Torque:		-1.16 Oz-Ft			
Protector:		7AM 036-A5		TestBoard:		NMQC Plotter Fixture #1							
Special Points	Vline (V)	Vaux (V)	Vcap (V)	Iline (A)	Imain (A)	Iaux (A)	Watts	RPM	Tq (Oz-ft)	HP	Eff (%)	PF (%)	Cap
	230.0	154.6	297.9	1.206	1.637	0.545	83.6	1195	0.00	0.000	0.0	0.0	4.9
	230.0	153.8	297.1	1.219	1.640	0.545	88.4	1190	0.19	0.003	2.5	0.0	4.9
	230.0	149.9	289.1	1.287	1.633	0.531	139.7	1177	5.05	0.071	33.7	0.0	4.9
	230.0	144.2	278.2	1.472	1.720	0.512	211.7	1165	11.47	0.159	57.8	0.0	4.9
	230.0	141.7	274.1	1.599	1.817	0.502	243.5	1151	13.99	0.192	59.2	0.0	4.9
	230.0	137.6	267.1	1.819	1.989	0.490	302.7	1136	18.40	0.249	61.2	0.0	4.9
	230.0	133.1	260.6	2.064	2.204	0.479	358.9	1120	22.02	0.294	61.1	0.0	4.9
	230.0	129.5	257.0	2.230	2.360	0.470	393.4	1104	24.03	0.316	59.9	0.0	4.8
	230.0	124.9	252.6	2.419	2.537	0.460	435.4	1086	26.28	0.340	58.2	0.0	4.8
1075 RPM	230.0	121.7	249.7	2.558	2.672	0.454	463.6	1075	27.58	0.353	56.8	0.0	4.8
	230.0	119.3	247.8	2.668	2.772	0.452	482.7	1067	28.43	0.361	55.8	0.0	4.8
	230.0	113.2	243.1	2.924	3.021	0.445	529.1	1046	30.12	0.375	52.9	0.0	4.9
	230.0	106.7	238.9	3.162	3.267	0.439	570.7	1024	31.08	0.379	49.5	0.0	4.9
	230.0	100.7	235.6	3.374	3.489	0.434	605.5	999	31.46	0.374	46.1	0.0	4.9
BDT OZ-FT	230.0	97.6	234.1	3.480	3.601	0.430	622.0	985	31.58	0.370	44.4	0.0	4.9
	230.0	94.7	233.0	3.581	3.707	0.428	637.0	971	31.53	0.365	42.7	0.0	4.9
	230.0	89.6	231.1	3.764	3.900	0.423	664.5	942	31.45	0.353	39.6	0.0	4.9
	230.0	82.7	229.0	3.976	4.128	0.422	692.5	910	30.26	0.328	35.3	0.0	4.9
	230.0	76.4	228.0	4.170	4.339	0.422	715.4	875	28.82	0.300	31.3	0.0	4.9
	230.0	71.5	227.7	4.330	4.513	0.421	734.5	838	27.68	0.276	28.0	0.0	4.9
	230.0	66.9	227.8	4.482	4.678	0.420	751.5	797	26.29	0.250	24.8	0.0	4.9
	230.0	62.3	228.2	4.631	4.833	0.421	768.2	754	24.85	0.223	21.6	0.0	4.9
	230.0	57.1	229.0	4.758	4.962	0.422	776.2	707	22.48	0.189	18.2	0.0	4.9
	230.0	52.7	229.9	4.865	5.068	0.425	783.1	656	20.13	0.157	15.0	0.0	4.9
	230.0	49.0	231.0	4.953	5.209	0.427	790.2	601	18.05	0.129	12.2	0.0	4.9
	230.0	45.4	232.3	5.036	5.330	0.430	797.5	543	15.92	0.103	9.6	0.0	4.9
	230.0	42.3	233.7	5.150	5.434	0.433	804.3	481	13.76	0.079	7.3	0.0	4.9
	230.0	39.2	235.2	5.216	5.499	0.436	801.9	414	11.23	0.055	5.1	0.0	4.9
	230.0	36.4	236.8	5.271	5.566	0.438	803.5	342	9.31	0.038	3.5	0.0	4.9
	230.0	34.0	238.2	5.325	5.627	0.437	806.8	266	7.40	0.023	2.2	0.0	4.9
	230.0	32.1	239.8	5.366	5.671	0.436	810.5	185	6.57	0.014	1.3	0.0	4.8
	230.0	31.0	241.7	5.389	5.702	0.442	813.2	100	5.11	0.006	0.6	0.0	4.8

DRAWING NO. PAGE 1 of 6

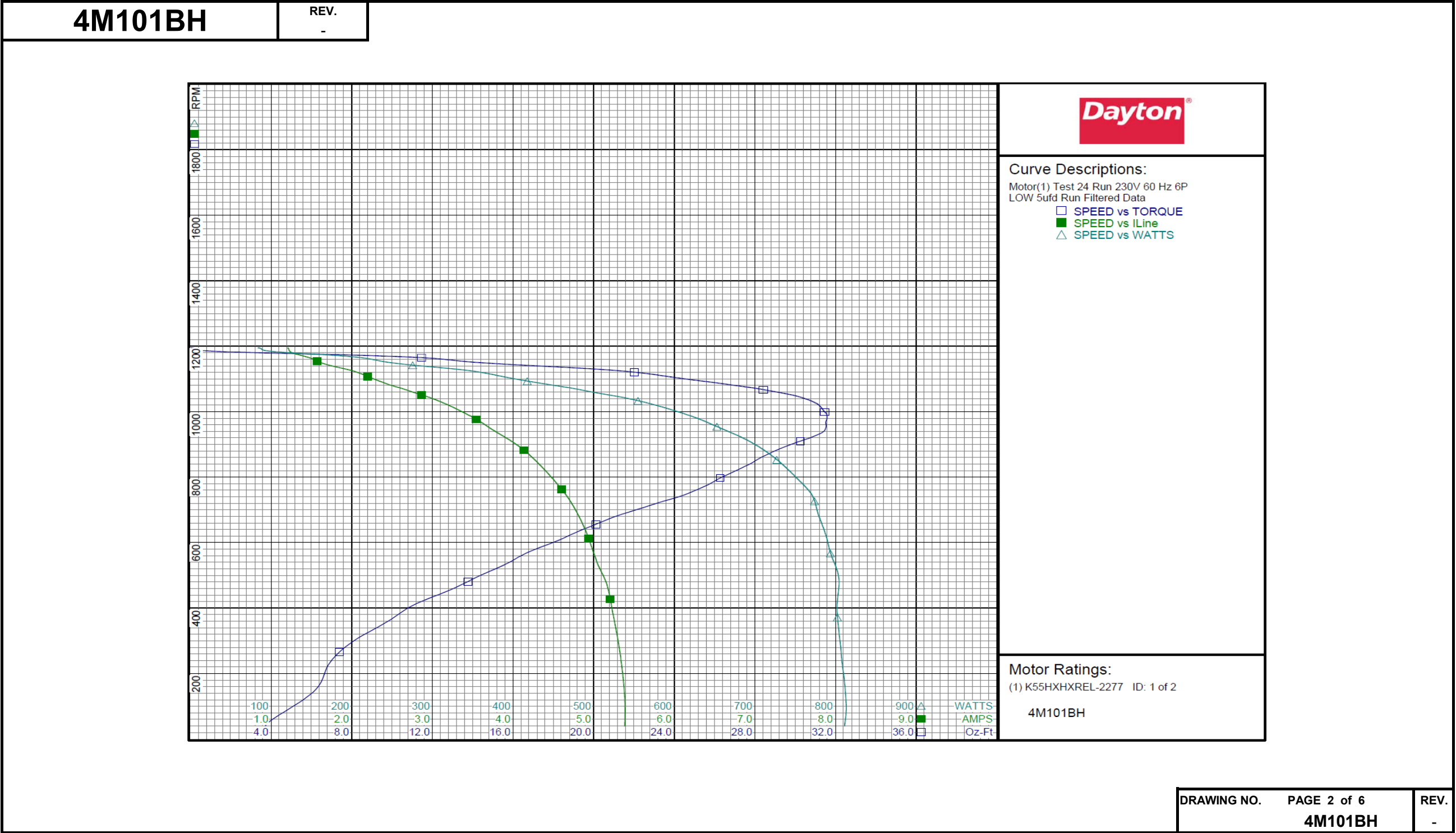
4M101BH

REV.
-

DRAWING NO.	PAGE 1 of 6	REV.
4M101BH		-

Dayton Electric Mfg. Co. Lake Forest, IL 60045 USA

Performance Data



Performance Data



4M101BH		REV. -													
Dayton Manufacturing Company															
Filtered															
Motor Description				Test Conditions											
Model:		4M101BH		Test Type:		Run		Run Cap:		5					
Motor ID:		1 of 2		Test Number:		20		Start Cap:		0µfd					
Poles:		6		Poles:		6		Environment:							
Volts:		208-230		Volts:		230		Tested:		11/5/2015 4:36:17 PM					
Frequency:		60		Hz:		60		Tested By:		Liu, Bingmin					
HP:		1/2		Rotation:				Gear Ratio:		1:1					
Speed:		1075		Special Cond:				Bearing Friction:		-0.89 Oz-Ft					
Phase:		1		Speed Conn:		MED		Windage Torque:		-0.94 Oz-Ft					
Protector:		7AM 036-A5		TestBoard:		NMQC Plotter Fixture #1									
Special Points	Vline (V)	Vaux (V)	Vcap (V)	Iline (A)	Imain (A)	Iaux (A)	Watts	RPM	Tq (Oz-ft)	HP	Eff (%)	PF (%)	Cap		
	230.0	167.4	316.4	1.406	1.865	0.581	92.4	1196	0.00	0.000	0.0	0.0	4.9		
	230.0	167.3	316.2	1.408	1.859	0.581	95.1	1191	0.02	0.000	1.1	0.0	4.9		
	230.0	164.7	312.5	1.445	1.862	0.570	120.5	1176	2.26	0.031	16.4	0.0	4.8		
	230.0	157.3	299.3	1.594	1.890	0.548	211.4	1163	10.79	0.149	53.2	0.0	4.9		
	230.0	151.2	288.9	1.855	2.063	0.534	293.2	1151	17.47	0.240	62.2	0.0	4.9		
	230.0	147.7	284.7	2.024	2.210	0.524	330.5	1136	20.13	0.272	61.5	0.0	4.9		
	230.0	144.2	280.5	2.187	2.352	0.512	369.6	1121	22.84	0.305	61.4	0.0	4.8		
	230.0	139.3	274.6	2.418	2.559	0.502	428.3	1105	26.42	0.347	60.5	0.0	4.8		
	230.0	132.5	267.5	2.745	2.852	0.492	495.1	1087	29.93	0.388	58.4	0.0	4.9		
1075 RPM	230.0	128.4	264.0	2.916	3.013	0.485	526.5	1075	31.29	0.400	56.7	0.0	4.9		
	230.0	126.6	262.6	2.986	3.082	0.483	539.6	1068	31.84	0.405	55.9	0.0	4.9		
	230.0	121.1	258.3	3.209	3.306	0.476	581.6	1046	33.37	0.416	53.3	0.0	4.9		
	230.0	114.2	253.9	3.462	3.565	0.467	627.6	1024	34.60	0.422	50.1	0.0	4.9		
	230.0	107.6	250.4	3.705	3.818	0.460	669.1	999	35.33	0.420	46.8	0.0	4.9		
BDT OZ-FT	230.0	103.5	248.1	3.851	3.972	0.456	693.6	983	35.51	0.416	44.7	0.0	4.9		
	230.0	100.6	246.7	3.951	4.076	0.455	709.2	972	35.45	0.410	43.1	0.0	4.9		
	230.0	94.1	244.2	4.172	4.312	0.450	742.0	942	35.13	0.394	39.6	0.0	4.9		
	230.0	88.4	242.4	4.373	4.525	0.446	771.0	910	34.63	0.375	36.3	0.0	4.9		
	230.0	82.0	240.9	4.582	4.748	0.443	798.9	875	33.42	0.348	32.5	0.0	4.9		
	230.0	75.6	240.0	4.786	4.960	0.444	823.6	838	31.57	0.315	28.5	0.0	4.9		
	230.0	69.7	239.7	4.950	5.133	0.445	842.0	797	29.48	0.280	24.8	0.0	4.9		
	230.0	64.7	239.9	5.082	5.330	0.446	858.5	754	27.59	0.247	21.5	0.0	4.9		
	230.0	60.1	240.4	5.253	5.496	0.446	873.1	706	25.56	0.215	18.4	0.0	4.9		
	230.0	56.1	241.1	5.407	5.648	0.446	887.0	656	23.51	0.184	15.4	0.0	4.9		
	230.0	52.3	242.3	5.532	5.789	0.448	897.0	602	21.16	0.152	12.6	0.0	4.9		
	230.0	48.7	243.5	5.626	5.895	0.451	899.4	543	18.35	0.118	9.8	0.0	4.9		
	230.0	45.6	244.8	5.726	6.007	0.453	906.7	480	15.91	0.091	7.5	0.0	4.9		
	230.0	42.7	246.2	5.822	6.116	0.455	914.5	413	13.64	0.067	5.5	0.0	4.9		
	230.0	40.4	247.9	5.897	6.202	0.459	919.0	342	11.03	0.045	3.6	0.0	4.9		
	230.0	38.7	249.7	5.933	6.248	0.462	915.8	266	8.91	0.028	2.3	0.0	4.9		
	230.0	37.5	251.7	5.950	6.273	0.464	912.4	185	7.12	0.016	1.3	0.0	4.9		
	230.0	37.0	253.5	5.985	6.311	0.465	917.4	99	5.55	0.006	0.5	0.0	4.9		
DRAWING NO.												PAGE 3 of 6		REV.	
4M101BH															

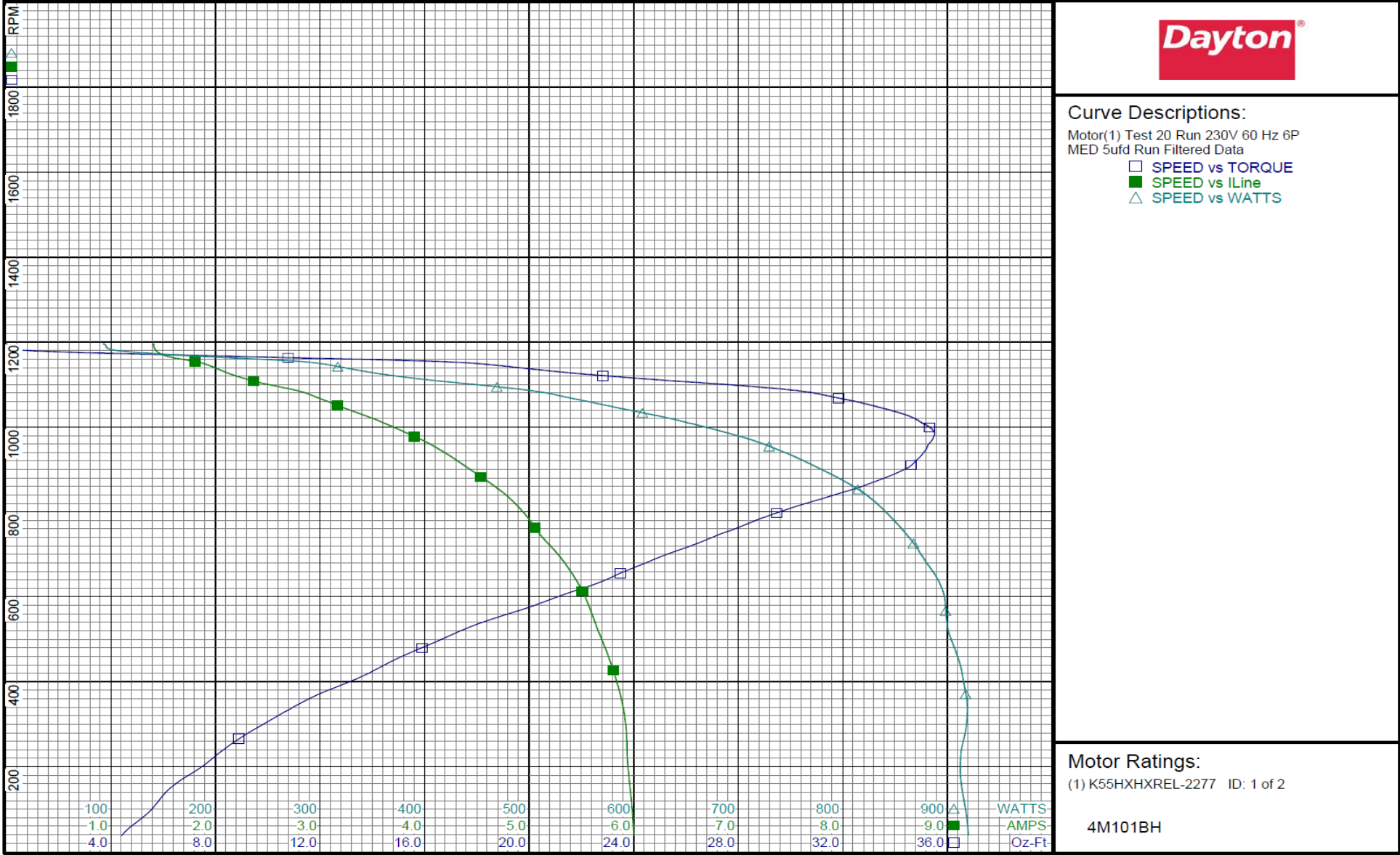
Dayton Electric Mfg. Co. Lake Forest, IL 60045 USA

Performance Data



4M101BH

REV.
-



Performance Data



4M101BH

REV.

-

Dayton Manufacturing Company

Filtered

Motor Description

Model: 4M101BH
Motor ID: 1 of 2
Poles: 6
Volts: 208-230
Frequency: 60
HP: 1/2
Speed: 1075
Phase: 1
Protector: 7AM 036-A5

Test Conditions

Test Type: Run
Test Number: 16
Poles: 6
Volts: 230
Hz: 60
Rotation:
Special Cond:
Speed Conn: HI
TestBoard: NMQC Plotter Fixture #1
Run Cap: 5
Start Cap: 0µfd
Environment:
Tested: 11/5/2015 4:41:52 PM
Tested By: Liu, Bingmin
Gear Ratio: 1:1
Bearing Friction: -0.98 Oz-Ft
Windage Torque: -1.01 Oz-Ft

Special Points	Vline (V)	Vaux (V)	Vcap (V)	Iline (A)	Imain (A)	Iaux (A)	Watts	RPM	Tq (Oz-ft)	HP	Eff (%)	PF (%)	Cap
	230.0	240.2	407.6	3.119	3.695	0.763	191.4	1197	0.00	0.000	0.0	0.0	5.0
	230.0	239.6	407.1	3.149	3.716	0.762	199.2	1193	-0.07	-0.001	0.5	0.0	5.0
	230.0	237.4	404.3	3.185	3.726	0.757	230.3	1179	2.48	0.035	9.8	0.0	5.0
	230.0	226.0	388.6	3.281	3.688	0.726	384.3	1168	17.57	0.245	47.4	0.0	5.0
	230.0	217.1	376.7	3.517	3.828	0.706	502.4	1157	27.71	0.382	57.9	0.0	5.0
	230.0	211.5	371.5	3.736	4.015	0.692	559.0	1145	31.75	0.433	57.8	0.0	4.9
	230.0	205.6	365.3	3.973	4.219	0.677	624.3	1129	36.41	0.489	58.4	0.0	4.9
0.5 HP	230.0	204.3	364.0	4.020	4.260	0.674	637.5	1126	37.31	0.500	58.5	0.0	4.9
	230.0	198.2	357.8	4.274	4.485	0.660	703.7	1112	41.62	0.551	58.4	0.0	4.9
	230.0	187.4	347.0	4.762	4.879	0.643	826.2	1094	48.32	0.629	56.9	0.0	4.9
	230.0	175.9	337.1	5.293	5.404	0.629	934.0	1076	53.09	0.680	54.3	0.0	4.9
1075 RPM	230.0	175.7	337.0	5.304	5.415	0.629	935.9	1075	53.16	0.681	54.2	0.0	4.9
	230.0	168.1	331.2	5.669	5.785	0.616	1005.2	1054	55.77	0.700	51.9	0.0	4.9
	230.0	161.5	326.8	6.000	6.118	0.604	1066.4	1030	57.66	0.707	49.5	0.0	4.9
	230.0	153.9	321.7	6.376	6.500	0.593	1136.9	1005	59.51	0.712	46.7	0.0	4.9
BDT OZ-FT	230.0	144.6	315.4	6.772	6.907	0.585	1208.1	983	60.14	0.704	43.5	0.0	4.9
	230.0	142.0	313.7	6.880	7.017	0.584	1226.1	978	60.09	0.699	42.6	0.0	4.9
	230.0	131.3	307.8	7.333	7.488	0.578	1295.6	947	59.07	0.666	38.3	0.0	5.0
	230.0	123.7	304.4	7.687	7.859	0.570	1347.7	914	58.17	0.633	35.0	0.0	5.0
	230.0	116.9	301.7	8.033	8.222	0.565	1397.9	879	56.73	0.594	31.7	0.0	5.0
	230.0	109.7	299.2	8.376	8.585	0.563	1442.8	842	54.31	0.544	28.1	0.0	5.0
	230.0	102.2	297.0	8.686	8.916	0.560	1475.7	801	50.70	0.483	24.4	0.0	5.0
	230.0	96.2	295.5	8.968	9.216	0.557	1505.5	756	47.49	0.427	21.2	0.0	5.0
	230.0	91.6	294.5	9.216	9.475	0.552	1532.7	709	45.08	0.380	18.5	0.0	5.0
	230.0	88.6	295.2	9.480	9.739	0.552	1566.1	658	41.96	0.329	15.7	0.0	5.0
	230.0	86.2	296.4	9.694	9.933	0.561	1585.5	604	37.26	0.268	12.6	0.0	5.0
	230.0	83.9	297.9	9.831	10.075	0.570	1588.7	546	32.18	0.209	9.8	0.0	5.1
	230.0	82.1	298.9	9.981	10.347	0.569	1601.5	483	28.21	0.162	7.5	0.0	5.1
	230.0	80.7	300.1	10.116	10.538	0.569	1615.9	416	24.23	0.120	5.5	0.0	5.0
	230.0	79.9	301.7	10.239	10.693	0.567	1629.0	345	20.18	0.083	3.8	0.0	5.0
	230.0	80.0	303.5	10.295	10.780	0.569	1626.7	269	15.92	0.051	2.3	0.0	5.0
	230.0	81.1	306.0	10.314	10.819	0.576	1619.5	189	12.43	0.028	1.3	0.0	5.0
	230.0	82.6	308.3	10.367	10.881	0.581	1625.7	104	9.89	0.012	0.6	0.0	5.0

DRAWING NO.	PAGE 5 of 6	REV.
4M101BH		-

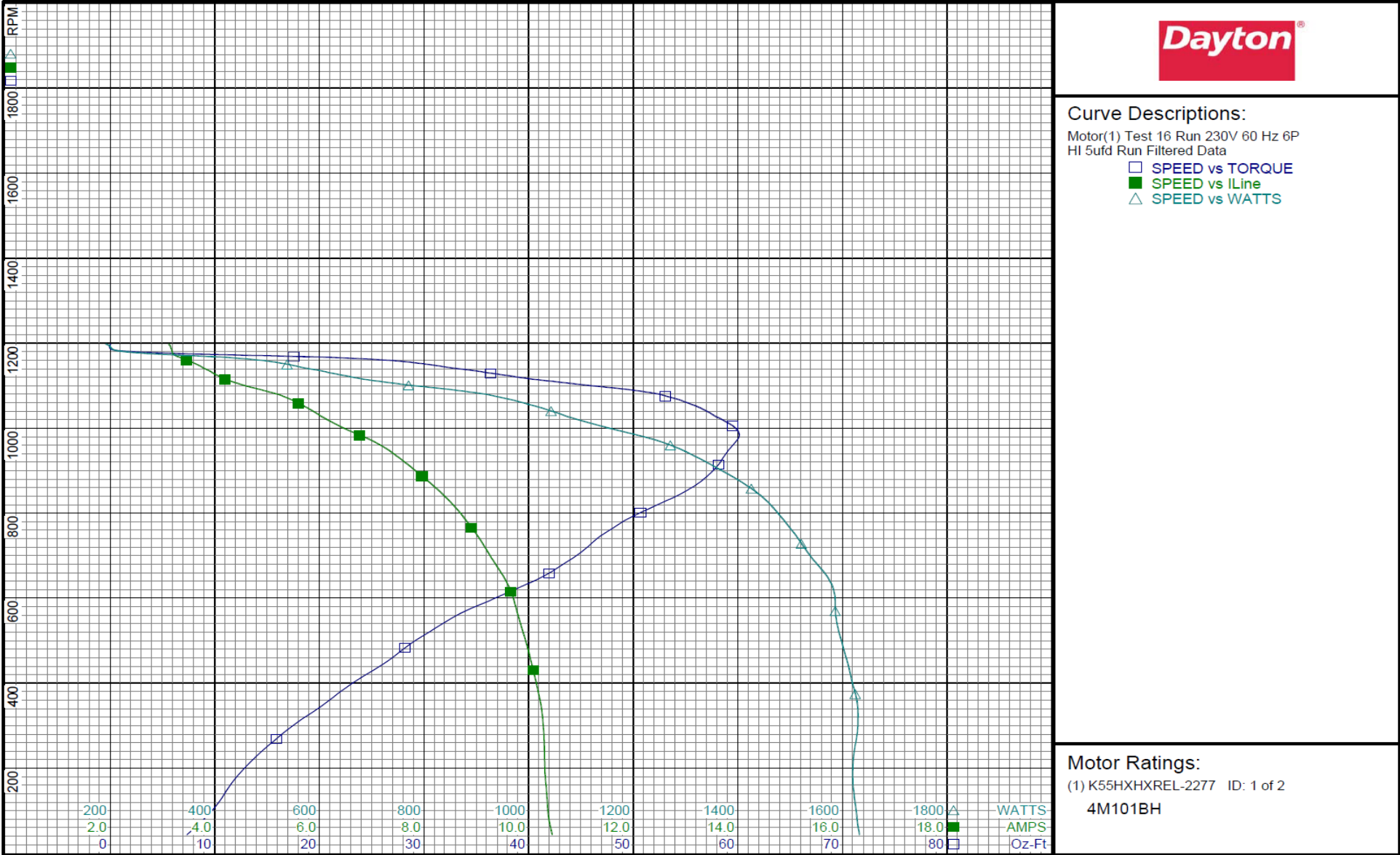
Dayton Electric Mfg. Co. Lake Forest, IL 60045 USA

Performance Data

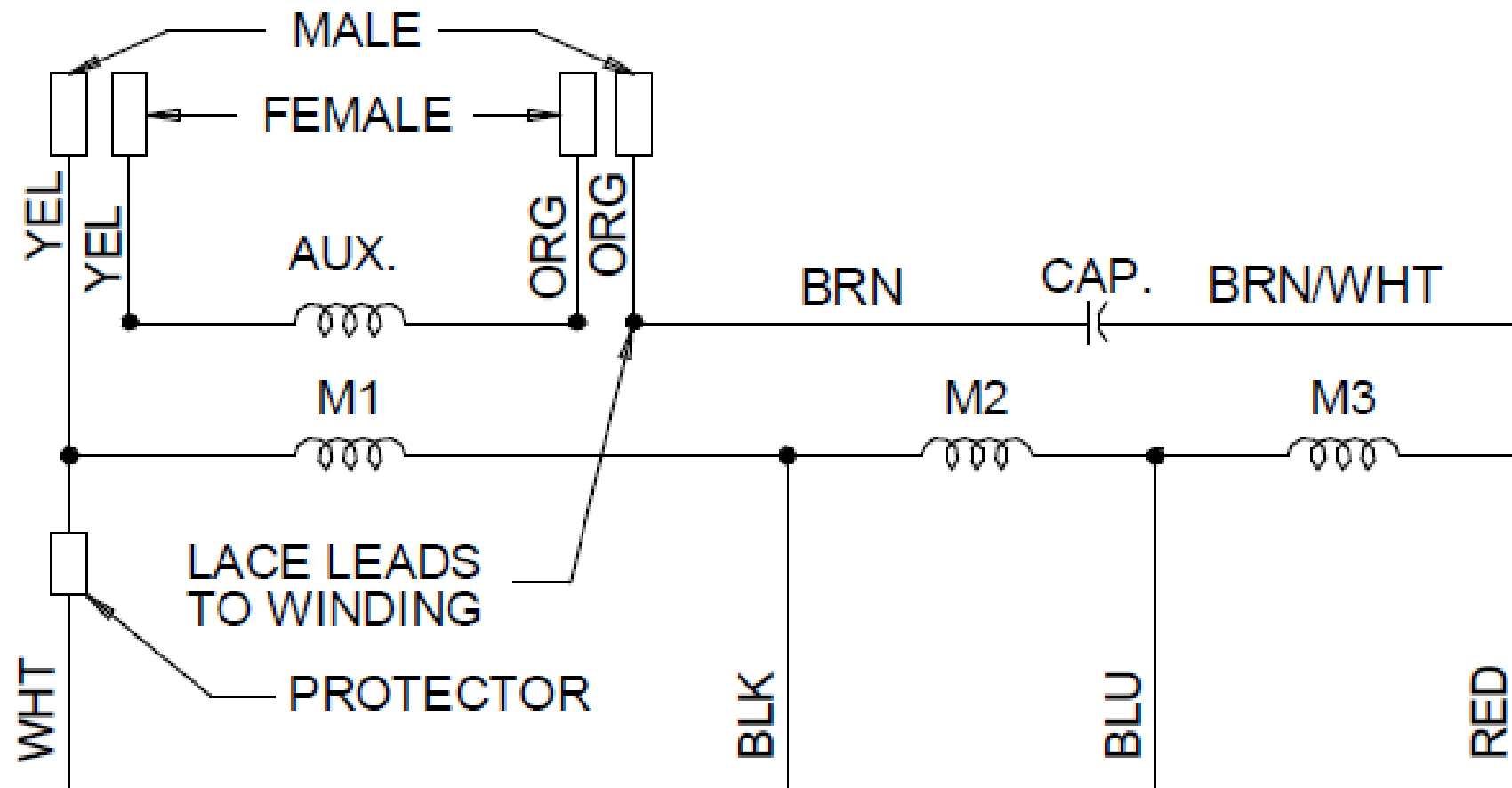


4M101BH

REV.
-



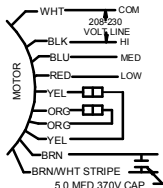
Wiring Diagram



ROTATION: CCW VIEWING LEAD END
WITH ORG-ORG AND YEL-YEL.
TO REV. ROTATION INTERCHANGE
ORG. AND YEL LEADS.

DRAWING NO.	PAGE 1 of 1	REV.
	4M101BH	-

Dayton Electric Mfg. Co. Lake Forest, IL 60045 USA

Dayton®**DIRECT DRIVE
BLOWER MOTOR****HP:** 1/2
VOLTS: 208-230**AMPS:** 4.0**RPM:** 1075 / 3SPD**DUTY:** CONT**SF:** 1.0**KVA CODE:****ENCL:** OAO**THERMALLY PROTECTED:** AUTO**MFG. NO.** **PROT. CODE:** 7A010 **AVG.F.L****MTR REF:** K55HXREL-2277 **EFF.****BAR CODE****Part**
No 4M101BH**Disconnect Power Before Making Any
Electrical Connections or Changes****TO REVERSE ROTATION
INTERCHANGE ORG AND YEL LEADS**

E37403



258501

Mfd for Dayton Electric Mfg. Co., Lake Forest, IL 60045 USA

Made in China