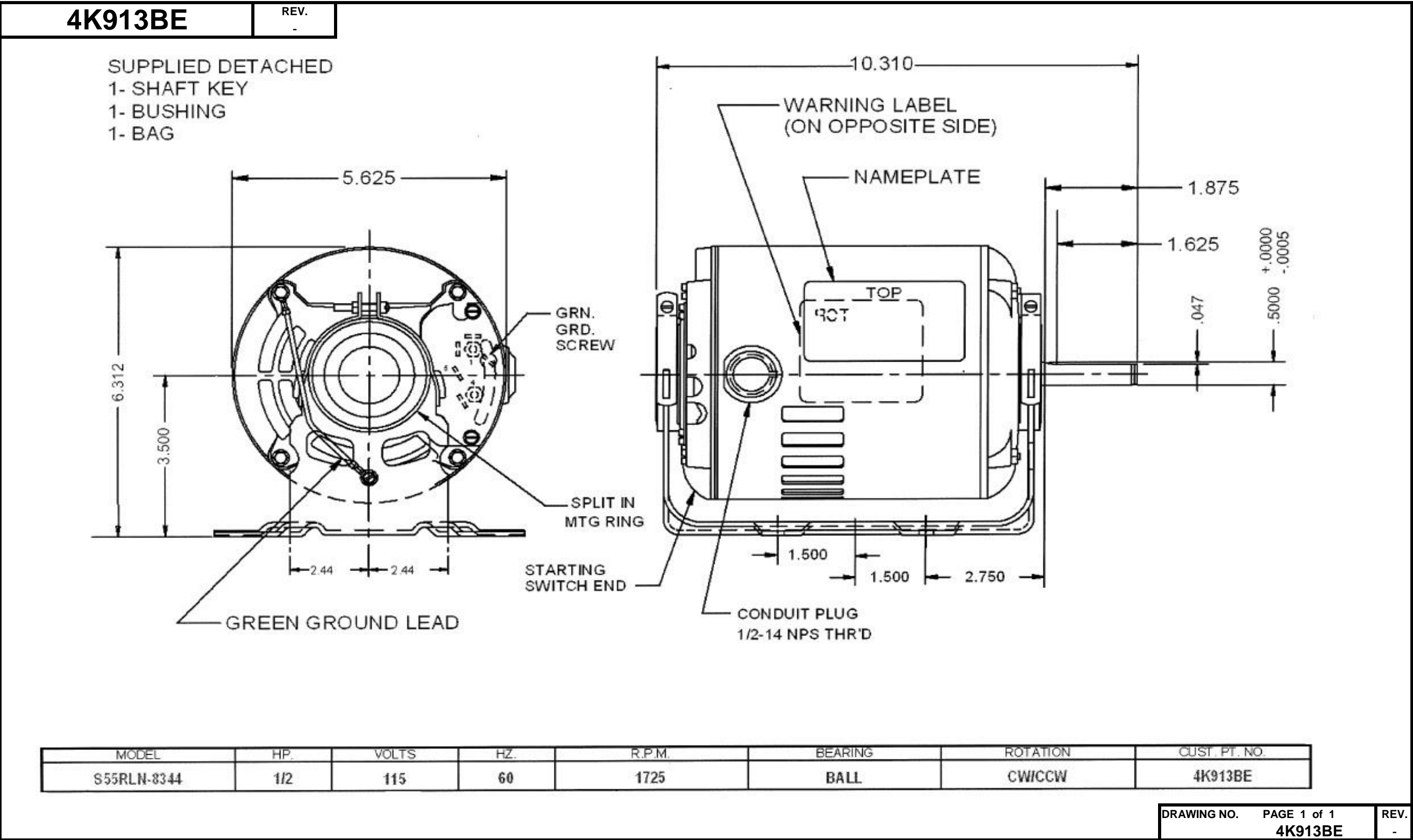


Dimensional Drawing



Performance Data



4K913BE

REV.
-

MOTOR PERFORMANCE

HP:	1/2								
Poles:	4								
No. of Speeds:	1								
Volts:	115	115							
HZ:	60	60							
Service Factor:	1.25								
Efficiency:	@ Rated Load	54.5							
Power Factor:	@ Rated Load	58.5							
Amps:	@ No Load								
	@ Rated Load								
	@ Service Factor								
	@ Locked Rotor	62.27							
RPM:	@ Rated Load								
Ambient (°C):									
Altitude (FASL):									
Torques:	Breakdown	61.58							
	Locked Rotor	44.91							
	Pull-Up	39.97							
	Rated Load								
	Service Factor								
Watts:	Rated Load								
KVA Code:									
Temperature Rise:	@ Rated Load	79.2							
	@ Service Factor	93.8							
Thermal Protector:	Trip Temp (°C)								
Winding Material:	Start (Auxiliary)								
	Run (Main)								
Capacitor(s):	Start (MFD / Volts)								
	No. of Start Capacitors								
	Run (MFD / Volts)								
	No. of Run Capacitors								
LOW SPEED PERFORMANCE DATA:									
HP:									
Poles:									
Volts:									
HZ:									
Efficiency:	@ Rated Load								
Power Factor:	@ Rated Load								
Amps:	@ No Load								
	@ Rated Load								
	@ Service Factor								
	@ Locked Rotor								
Torques:	@ Rated Load								
	Locked Rotor								
	Pull-Up								
	Rated Load								
	Service Factor								
Watts:	@ Rated Load								
Temperature Rise:	@ Rated Load								
	@ Service Factor								

DRAWING NO. PAGE 1 of 1 REV.
4K913BE -

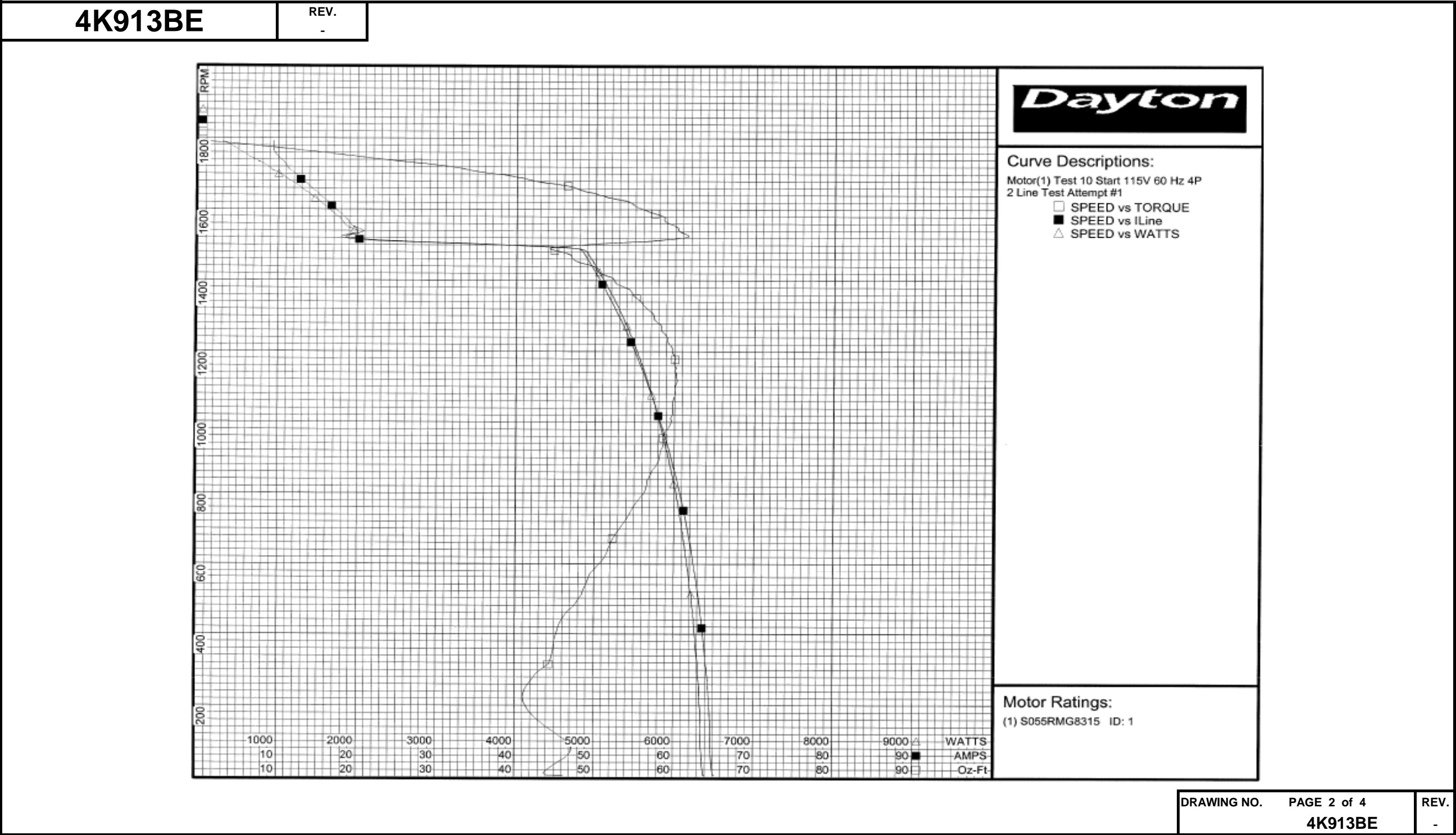
Dayton Electric Mfg. Co. Lake Forest, IL 60045 USA

Performance Data



4K913BE		REV. -						
Dayton Manufacturing Company								
Motor Description				Test Conditions				
Model: S055RMG8315		Test Type: Start		Run Cap: 0				
Motor ID: 1		Test Number: 10		Start Cap: 0µfd				
Poles: 4		Poles: 4						
Volts: 115		Volts: 115		Tested: 3/3/2012 6:55:13 AM				
Frequency: 60		Hz: 60						
HP: 1/2		Rotation:		Gear Ratio: 1:1				
Speed: 1725		Special Cond: 2 Line Test		Bearing Friction: -0.42 Oz-Ft				
Phase: 1		Speed Conn:		Windage Torque: -1.67 Oz-Ft				
Protector: NONE		TestBoard: Amps Performance		Fixture #1				
Special Points		Vline	Iline	Watts	Speed	Tq (Oz-ft)	HP	Eff (%)
		115.0	65.18	6389	4	46.17	0.002	0.0
		115.0	64.80	6360	40	45.45	0.022	0.3
		115.0	64.53	6341	183	41.85	0.091	1.1
PUT OZ-FT		115.0	64.41	6324	224	41.00	0.109	1.3
		115.0	64.06	6305	316	44.30	0.167	2.0
		115.0	63.46	6254	440	45.92	0.241	2.9
		115.0	62.76	6193	556	49.23	0.326	3.9
		115.0	61.98	6122	662	52.11	0.411	5.0
		115.0	61.11	6054	762	54.90	0.498	6.1
		115.0	60.13	5969	853	57.02	0.579	7.2
		115.0	59.07	5882	939	58.65	0.656	8.3
		115.0	57.99	5791	1018	59.65	0.723	9.3
		115.0	56.89	5695	1091	60.01	0.780	10.2
		115.0	55.74	5594	1159	59.97	0.827	11.0
		115.0	54.60	5497	1221	59.26	0.862	11.7
		115.0	53.43	5380	1279	58.05	0.884	12.3
		115.0	52.26	5274	1331	55.98	0.887	12.6
		115.0	51.08	5159	1380	53.82	0.884	12.8
		115.0	49.95	5047	1424	50.31	0.853	12.6
		115.0	48.83	4932	1465	46.95	0.819	12.4
		115.0	33.71	3270	1503	50.45	0.903	20.6
		115.0	20.67	1995	1540	60.38	1.107	41.4
		115.0	18.68	1791	1571	58.57	1.095	45.6
		115.0	17.30	1646	1600	55.94	1.066	48.3
		115.0	15.98	1496	1626	53.16	1.029	51.3
		115.0	14.73	1347	1650	48.76	0.958	53.1
		115.0	13.54	1199	1673	44.23	0.881	54.8
		115.0	12.44	1057	1695	39.03	0.788	55.6
		115.0	11.28	900	1715	33.17	0.677	56.1
		115.0	10.62	752	1734	25.72	0.531	52.7
		115.0	9.72	599	1753	18.26	0.381	47.5
		115.0	9.37	460	1771	10.35	0.218	35.4
		115.0	9.39	312	1790	0.97	0.021	4.9
		115.0	9.42	297	1792	0.00	0.000	0.0

Performance Data



Performance Data



4K913BE		REV. -						
Dayton Manufacturing Company								
Motor Description				Test Conditions				
Model:	S055RMG8315			Test Type:	Run	Run Cap:	0	
Motor ID:	1			Test Number:	20	Start Cap:	0µfd	
Poles:	4			Poles:	4			
Volts:	115			Volts:	115	Tested:	3/3/2012 6:54:21 AM	
Frequency:	60			Hz:	60			
HP:	1/2			Rotation:		Gear Ratio:	1:1	
Speed:	1725			Special Cond:		Bearing Friction:	-0.42 Oz-Ft	
Phase:	1			Speed Conn:		Windage Torque:	-1.73 Oz-Ft	
Protector:	NONE			TestBoard:	Amps Performance	Fixture #1		
Special Points	Vline	Iline	Watts	Speed	Tq (Oz-ft)	HP	Eff (%)	PF (%)
	115.0	9.60	273	1787	0.00	0.000	0.0	24.7
	115.0	9.56	424	1769	9.17	0.193	34.0	38.6
	115.0	9.83	605	1748	20.04	0.417	51.4	53.5
0.5 HP	115.0	10.16	684	1740	24.14	0.500	54.5	58.5
24.4 OZ-FT	115.0	10.19	690	1740	24.40	0.505	54.6	58.9
	115.0	10.74	785	1729	29.08	0.599	56.9	63.5
30 OZ-FT	115.0	10.88	805	1727	30.00	0.617	57.1	64.3
1725 RPM	115.0	11.00	820	1725	30.88	0.634	57.7	64.8
	115.0	11.64	929	1709	35.83	0.729	58.5	69.4
	115.0	12.93	1113	1688	43.46	0.873	58.5	74.8
	115.0	14.13	1283	1665	48.97	0.970	56.4	79.0
	115.0	15.51	1450	1639	53.92	1.052	54.1	81.3
	115.0	17.01	1616	1613	56.74	1.090	50.3	82.6
	115.0	18.52	1775	1584	60.38	1.139	47.9	83.3
	115.0	20.02	1930	1553	62.51	1.156	44.7	83.8
	115.0	21.53	2077	1519	63.28	1.144	41.1	83.9
BDT OZ-FT	115.0	22.16	2137	1505	64.11	1.149	40.1	83.8
	115.0	23.05	2219	1483	63.36	1.118	37.6	83.7
	115.0	24.57	2353	1443	63.08	1.083	34.3	83.3
	115.0	26.02	2480	1399	62.02	1.033	31.1	82.9
	115.0	27.41	2596	1351	59.55	0.958	27.5	82.3
	115.0	28.75	2704	1300	56.89	0.880	24.3	81.8
	115.0	30.04	2802	1243	53.63	0.794	21.1	81.1
	115.0	31.24	2888	1184	49.83	0.702	18.1	80.4
	115.0	32.36	2967	1117	45.84	0.610	15.3	79.7
	115.0	33.44	3033	1047	41.52	0.518	12.7	78.9
	115.0	34.38	3092	971	36.85	0.426	10.3	78.2
	115.0	35.24	3141	890	31.99	0.339	8.0	77.5
	115.0	63.77	6187	805	56.35	0.540	6.5	84.4
	115.0	64.31	6337	711	54.81	0.464	5.5	85.7
	115.0	64.82	6378	610	51.81	0.376	4.4	85.6
	115.0	65.08	6399	502	48.79	0.292	3.4	85.5
	115.0	65.29	6410	386	45.59	0.210	2.4	85.4
	115.0	65.30	6410	264	42.77	0.134	1.6	85.4
	115.0	65.20	6398	134	42.59	0.068	0.8	85.3

DRAWING NO.	PAGE 3 of 4	REV.
4K913BE		-

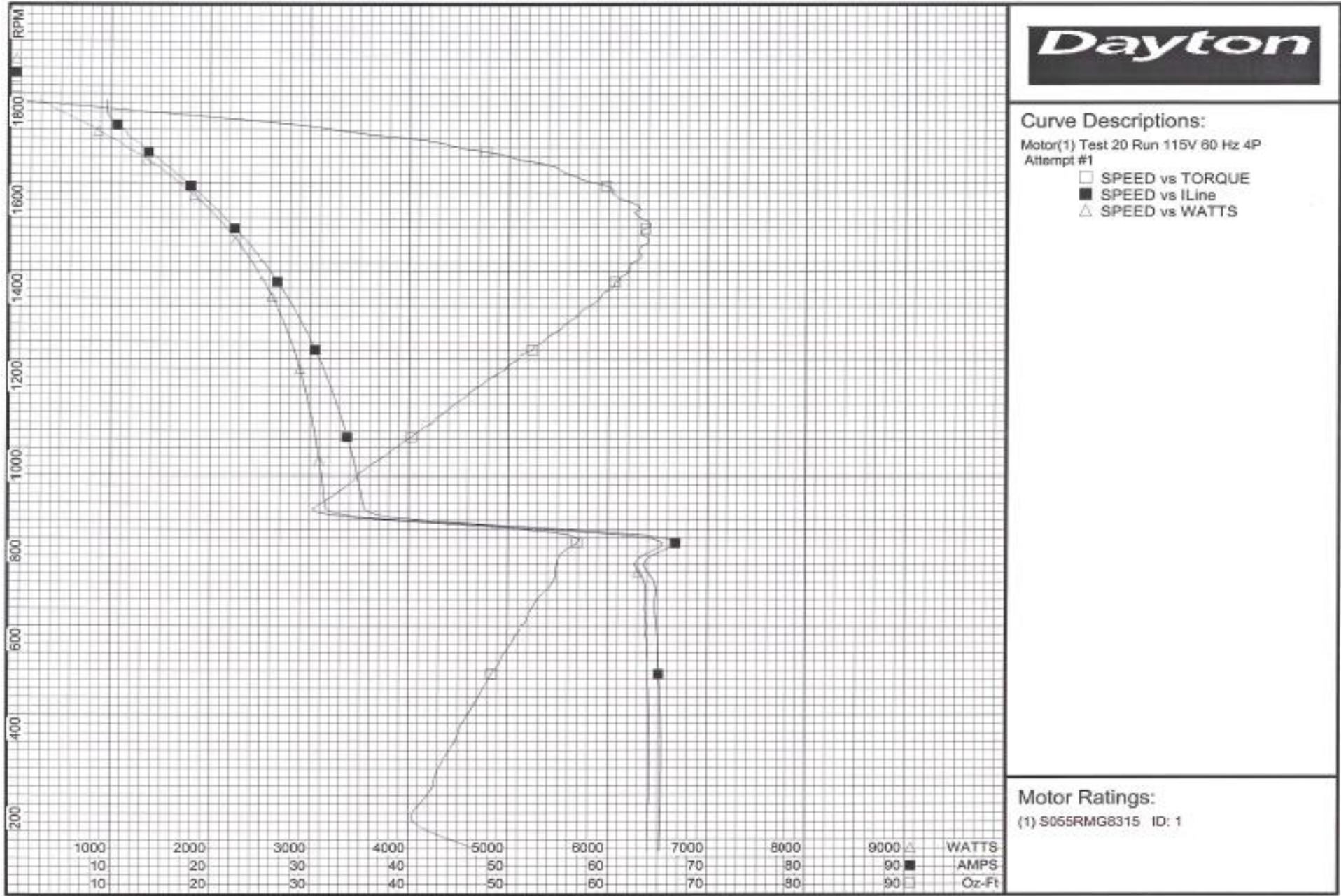
Dayton Electric Mfg. Co. Lake Forest, IL 60045 USA

Performance Data

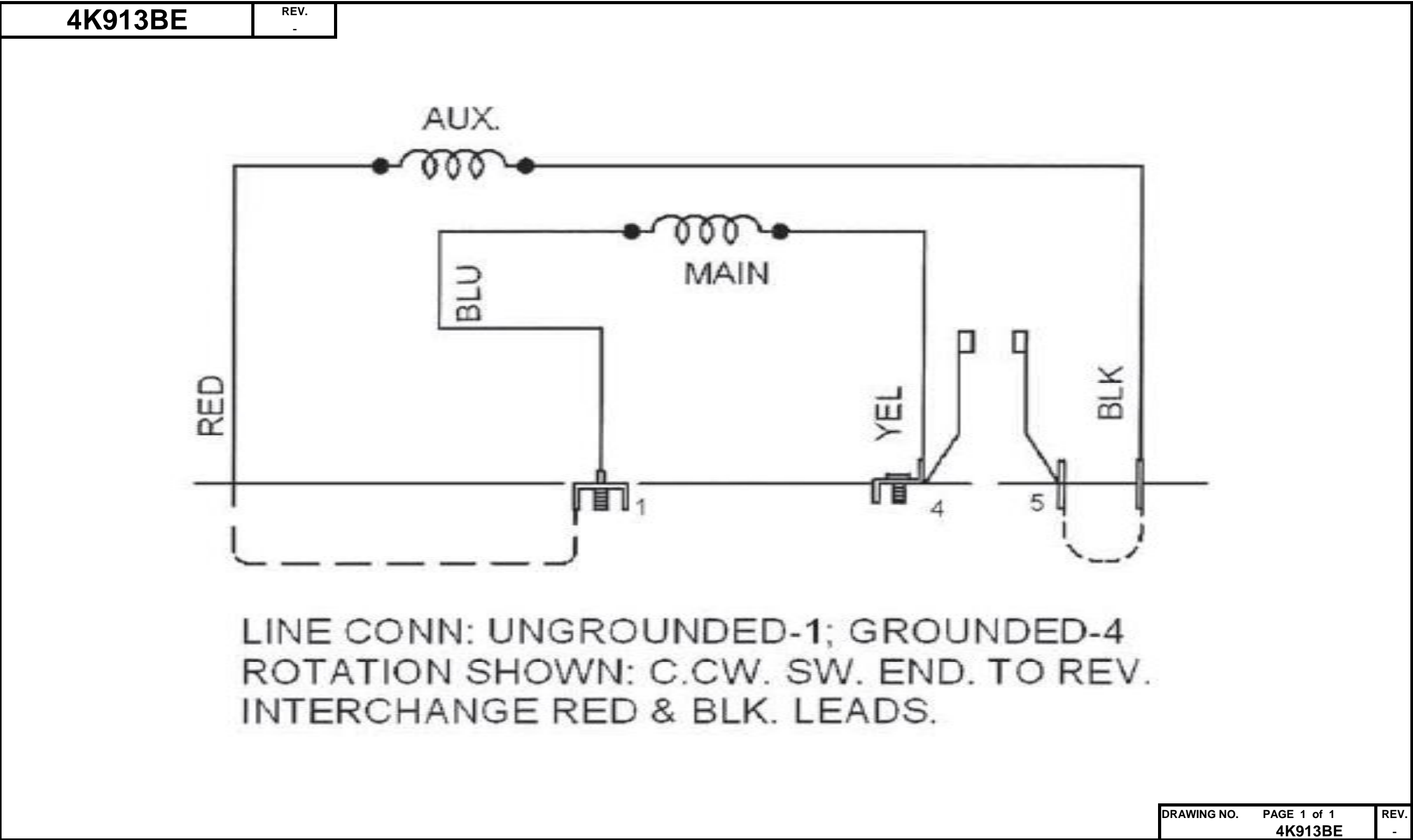


4K913BE

REV.
-



Wiring Diagram



Dayton Electric Mfg. Co. Lake Forest, IL 60045 USA



Part
No

4K913BE

SPLIT PHASE MOTOR



HP: 1/2

PH: 1

VOLTS: 115

HZ: 60

AMPS: 8.9

FR: 56Z

RPM: 1725

INS CL: F

DUTY: CONT

AMB: 40 °C

SF: 1.25


SFA: 9.6

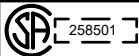
KVA CODE : R

ENCL: ODP

MTR REF: S55RLN-8344

THERMALLY PROTECTED: NONE

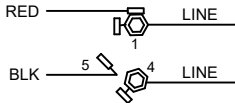
MFG. NO. 



E47479

**Disconnect Power Before Making
Any Electrical Connections or Changes**

CONNECTIONS



**TO REVERSE ROTATION
INTERCHANGE RED & BLK LEADS**

Mfd for Dayton Electric Mfg. Co., Lake Forest, IL 60045 USA

Made in Mexico