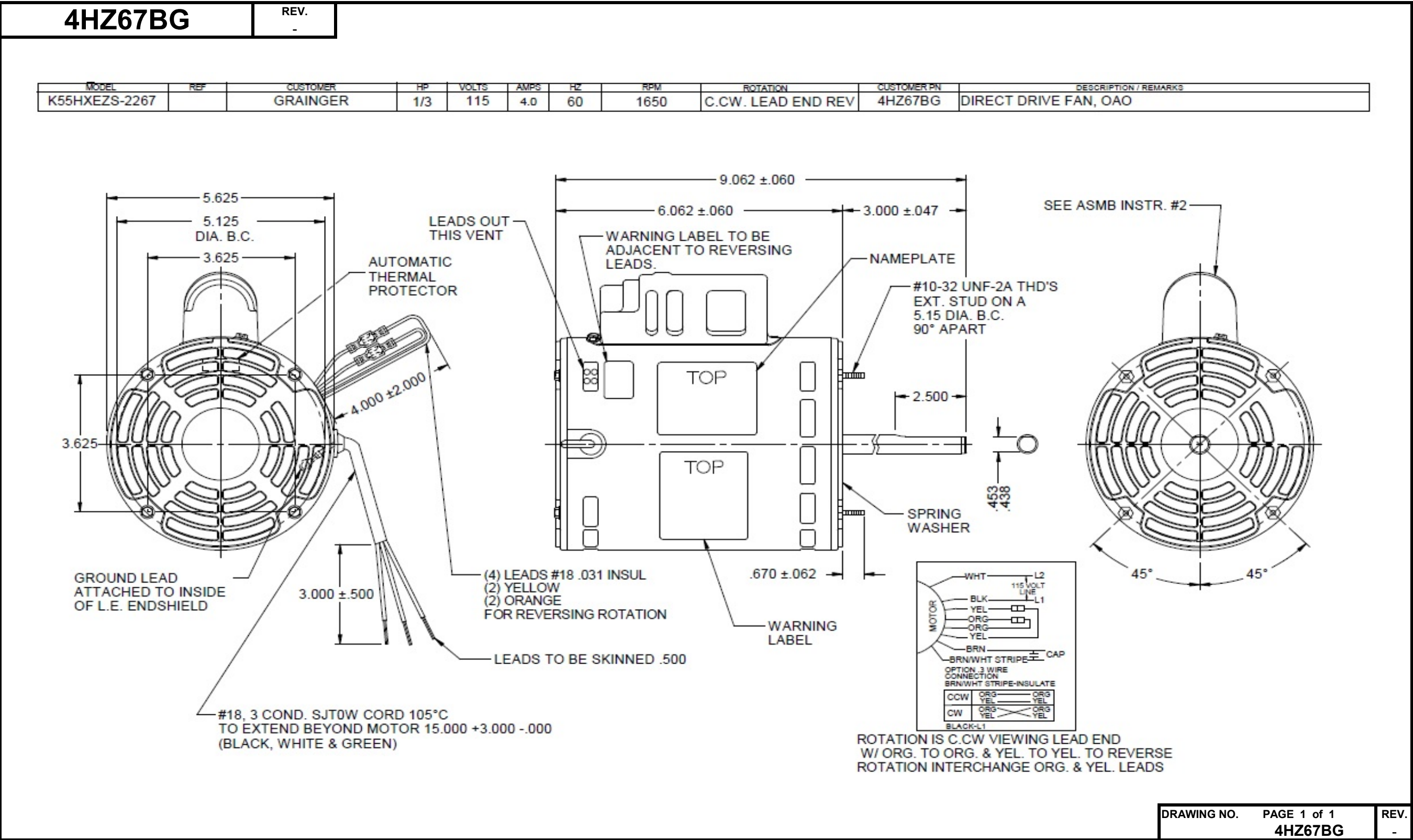


Dimensional Drawing



Performance Data



4HZ67BG

REV.
-

SHADED-POLE & PSC MOTOR PERFORMANCE

HP:	1/3							
Poles:	4							
Ambient (°C):	40							
Altitude (FASL):								
No. of Speeds:	1							
HIGH SPEED								
Volts:	115	115						
HZ:	60	60						
Service Factor:	1							
Efficiency:	@ Rated Load	70.3						
Power Factor:	@ Rated Load	82.4						
Amps:	@ No Load							
	@ Rated Load	3.8						
	@ Locked Rotor	14.3						
RPM:	@ Rated Load	1684						
Torques:	Breakdown	32.4						
	Locked Rotor	4.3						
	Pull-Up	4.1						
	Rated Load	17						
	Service Factor	17						
Watts:	Rated Load	361						
Temperature Rise:	@ Rated Load	OAO						
Thermal Protector:	Trip Temp (°C)	156.2						
Winding Material:	Start (Auxiliary)	Cu						
	Run (Main)	Cu						
Capacitor(s):	Run (MFD / Volts)	6 mFd, 370V						
	No. of Run Capacitors							

MEDIUM-HIGH SPEED

HP:								
Volts:								
HZ:								
Efficiency:	@ Rated Load							
Power Factor:	@ Rated Load							
Amps:	@ No Load							
	@ Rated Load							
	@ Locked Rotor							
Torques: Oz.Ft. / Lb.In. (Circle One)	Breakdown							
	Locked Rotor							
	Pull-Up							
	Rated Load							
Watts:	@ Rated Load							
Temperature Rise:	@ Rated Load							

DRAWING NO. PAGE 1 of 1
4HZ67BG

REV.
-

Dayton Electric Mfg. Co. Lake Forest, IL 60045 USA

Performance Data



4HZ67BG

REV.
-

Dayton Manufacturing Company

Motor Description

Model: K055E2S2267 4HZ67BG
Motor ID:
Poles: 4
Volts: 115
Frequency: 60
HP: 1/3
Speed: 1650
Phase: 1
Protector: 7AM036 A5

Test Conditions

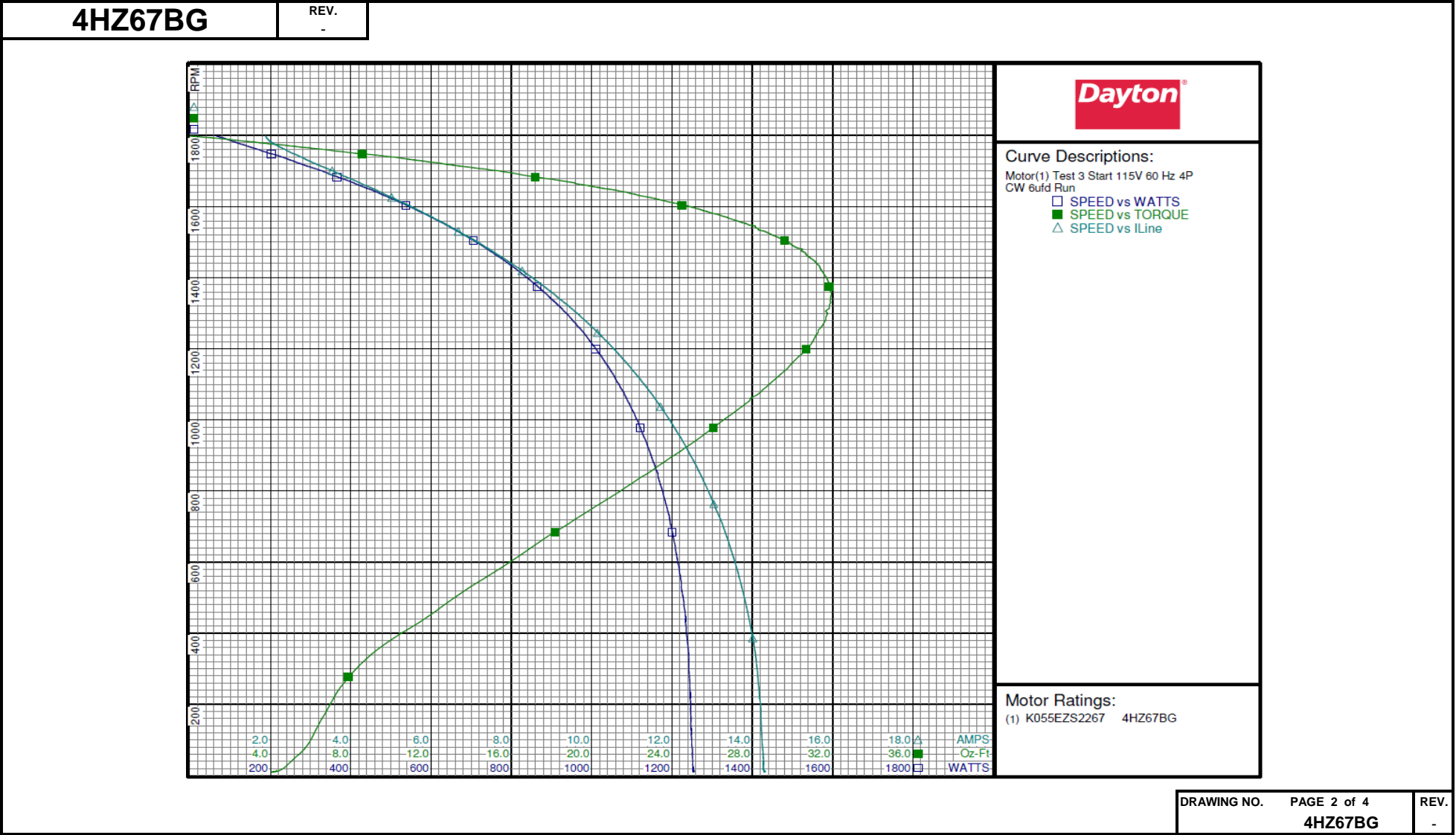
Test Type: Start Run Cap: 6
Test Number: 3 Start Cap: 0µfd
Poles: 4 Environment: 21.0 Deg C 50 % RH 1002 hPa
Volts: 115 Tested: 9/16/2015 10:25:08 AM
Hz: 60 Tested By: Sharp, Gerald
Rotation: CW Gear Ratio: 1:1
Special Cond: Bearing Friction: -0.11 Oz-Ft
Speed Conn: Windage Torque: -0.61 Oz-Ft
TestBoard: Amtps Performance Fixture #4

Special Points	Vline (V)	Vaux (V)	Vcap (V)	Iline (A)	Imain (A)	Iaux (A)	Watts	RPM	Tq (Oz-ft)	HP	Eff (%)	PF (%)	Cap
	115.0	23.3	124.5	14.317	14.437	0.297	1255.0	12	4.31	0.001	0.0	76.2	6.3
PUT OZ-FT	115.0	23.3	124.4	14.310	14.429	0.297	1253.4	10	4.05	0.000	0.0	76.2	6.3
	115.0	23.2	123.7	14.278	14.394	0.293	1251.6	30	4.85	0.002	0.1	76.2	6.3
	115.0	27.6	118.9	14.216	14.312	0.278	1247.4	159	6.55	0.012	0.7	76.3	6.2
	115.0	35.3	115.9	14.108	14.180	0.271	1242.2	309	8.42	0.031	1.9	76.6	6.2
	115.0	46.3	113.3	13.880	13.923	0.273	1232.2	461	12.21	0.067	4.1	77.2	6.4
	115.0	57.8	112.0	13.573	13.588	0.276	1214.6	597	15.87	0.113	6.9	77.8	6.5
	115.0	69.6	113.2	13.204	13.192	0.285	1194.2	719	19.16	0.164	10.2	78.6	6.7
	115.0	80.7	115.7	12.785	12.747	0.294	1168.3	828	22.17	0.219	14.0	79.5	6.7
	115.0	91.2	119.1	12.348	12.286	0.301	1139.8	923	24.70	0.271	17.8	80.3	6.7
	115.0	102.1	124.1	11.863	11.774	0.314	1107.5	1013	26.89	0.324	21.8	81.2	6.7
	115.0	112.9	129.9	11.359	11.244	0.328	1071.1	1092	28.69	0.373	26.0	82.0	6.7
	115.0	123.8	137.0	10.821	10.682	0.344	1031.5	1165	30.09	0.417	30.2	82.9	6.7
	115.0	134.5	145.0	10.262	10.098	0.363	987.8	1233	31.13	0.457	34.5	83.7	6.6
	115.0	145.3	153.7	9.683	9.493	0.384	940.7	1295	31.72	0.489	38.8	84.5	6.6
	115.0	156.0	163.2	9.076	8.883	0.404	888.5	1352	31.93	0.514	43.1	85.1	6.6
	115.0	168.5	175.0	8.344	8.124	0.430	823.3	1413	31.53	0.531	48.1	85.8	6.5
	115.0	178.5	184.9	7.743	7.500	0.452	768.5	1459	30.80	0.535	51.9	86.3	6.5
	115.0	186.6	193.1	7.246	6.986	0.468	721.5	1494	29.93	0.532	55.0	86.6	6.4
	115.0	195.7	202.7	6.679	6.403	0.488	666.4	1530	28.59	0.521	58.3	86.8	6.4
	115.0	204.8	212.7	6.090	5.800	0.508	607.3	1566	26.89	0.501	61.6	86.7	6.3
	115.0	213.4	222.2	5.529	5.227	0.527	549.7	1598	24.97	0.475	64.5	86.4	6.3
	115.0	221.4	231.6	4.964	4.659	0.545	488.7	1628	22.58	0.438	66.8	85.6	6.2
	115.0	229.4	241.0	4.426	4.120	0.562	428.5	1656	20.02	0.395	68.7	84.2	6.2
	115.0	236.5	249.8	3.923	3.629	0.577	371.3	1681	17.43	0.349	70.1	82.3	6.1
	115.0	243.4	258.3	3.449	3.178	0.591	315.5	1705	14.69	0.298	70.5	79.5	6.1
	115.0	250.3	267.2	2.987	2.758	0.606	258.5	1727	11.68	0.240	69.3	75.3	6.0
	115.0	256.6	275.8	2.583	2.426	0.622	203.1	1748	8.59	0.179	65.6	68.4	6.0
6.98 OZ-FT	115.0	259.6	280.2	2.396	2.290	0.631	175.0	1758	6.98	0.146	62.3	63.5	6.0
	115.0	262.7	285.3	2.205	2.164	0.641	144.8	1769	5.21	0.110	56.5	57.1	6.0
	115.0	268.7	295.7	1.954	2.050	0.668	97.8	1786	2.21	0.047	35.8	43.5	6.0
	115.0	274.2	304.2	1.881	2.086	0.692	65.5	1798	0.00	0.000	0.0	30.3	6.0

DRAWING NO. PAGE 1 of 4
4HZ67BG REV.
-

Dayton Electric Mfg. Co. Lake Forest, IL 60045 USA

Performance Data



Performance Data



4HZ67BG

REV.
-

Dayton Manufacturing Company

Motor Description

Model: K055E2S2267 4HZ67BG
Motor ID:
Poles: 4
Volts: 115
Frequency: 60
HP: 1/3
Speed: 1650
Phase: 1
Protector: 7AM036 A5

Test Conditions

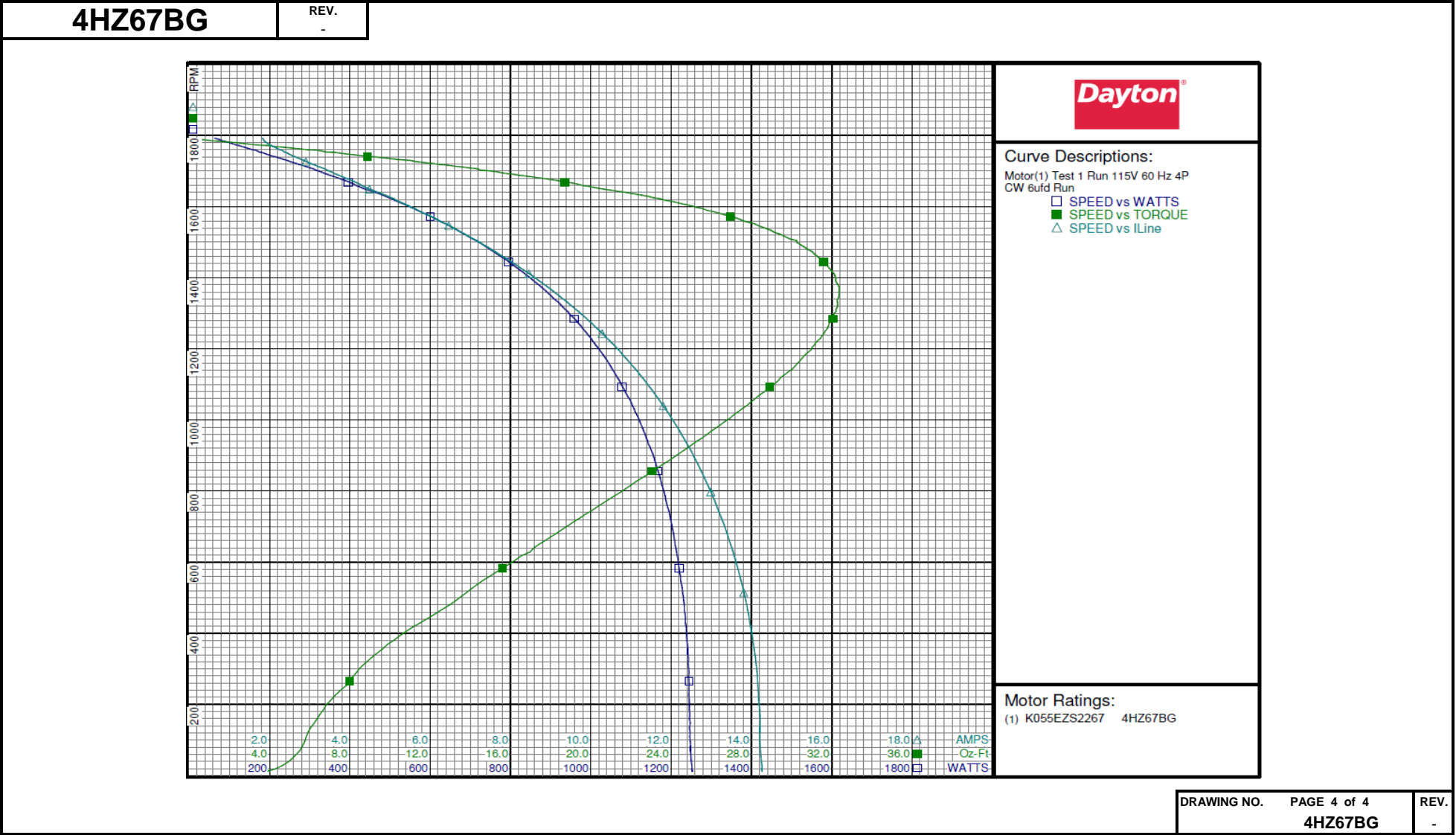
Test Type: Run
Test Number: 1
Poles: 4
Volts: 115
Hz: 60
Rotation: CW
Special Cond:
Speed Conn:
TestBoard: Amtps Performance Fixture #4
Run Cap: 6
Start Cap: 0µfd
Environment: 21.0 Deg C 50 % RH 1002 hPa
Tested: 9/16/2015 10:24:16 AM
Tested By: Sharp, Gerald
Gear Ratio: 1:1
Bearing Friction: -0.11 Oz-Ft
Windage Torque: -0.65 Oz-Ft

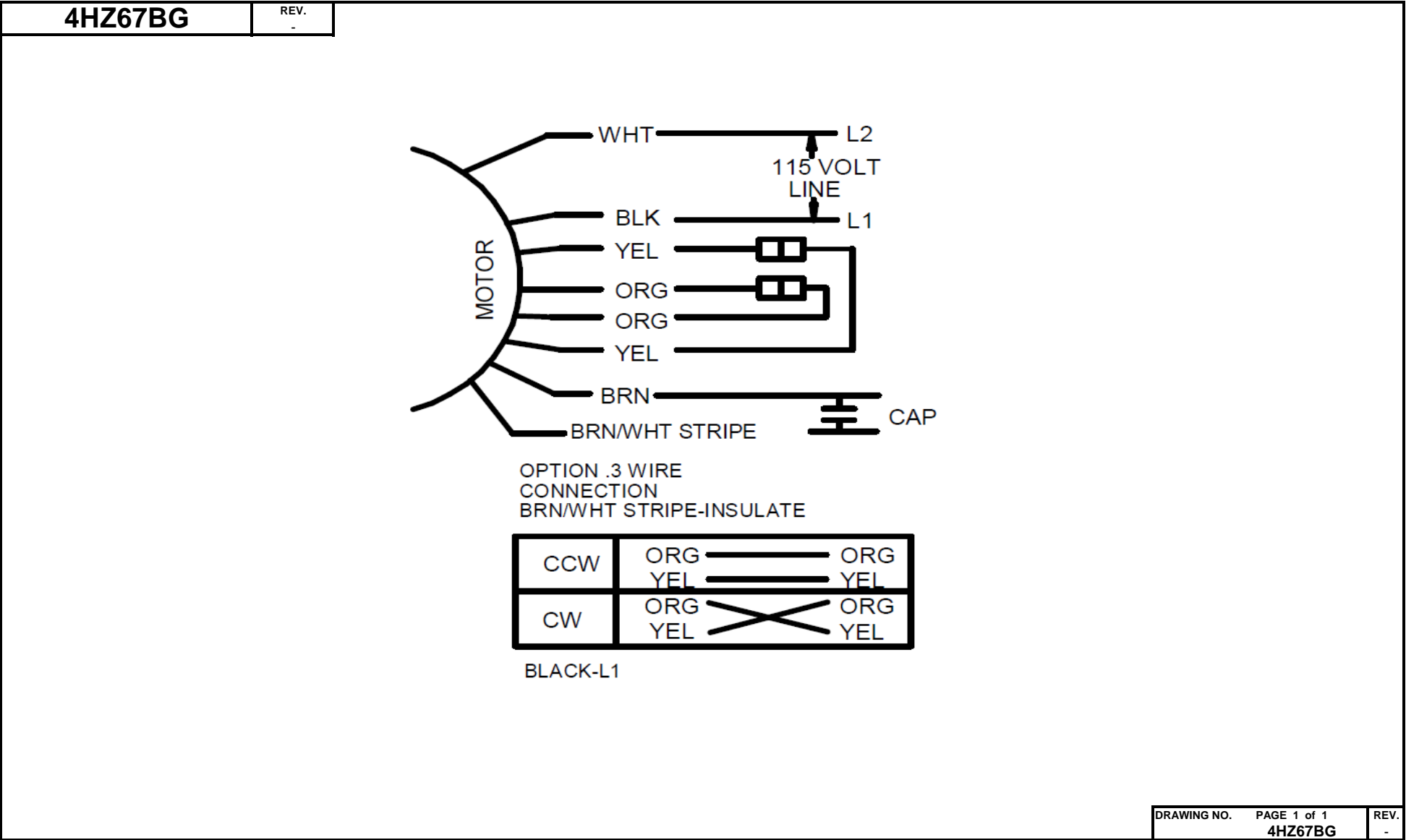
Special Points	Vline(V)	Vaux(V)	Vcap(V)	Iline(A)	Imain(A)	Iaux(A)	Watts	RPM	Tq(Oz-ft)	HP	Eff(%)	PF(%)	Cap
	115.0	274.6	304.4	1.829	2.037	0.694	63.2	1792	0.00	0.000	0.0	30.1	6.0
	115.0	267.3	293.5	1.959	2.023	0.661	106.6	1777	2.73	0.058	40.4	47.3	6.0
	115.0	261.5	282.5	2.298	2.205	0.634	164.1	1758	6.32	0.132	60.1	62.1	6.0
	115.0	255.7	274.2	2.654	2.470	0.618	216.2	1739	9.28	0.192	66.3	70.8	6.0
	115.0	248.3	263.9	3.141	2.885	0.599	280.9	1716	12.88	0.263	69.9	77.8	6.0
	115.0	240.4	253.9	3.659	3.369	0.582	343.0	1691	16.08	0.324	70.4	81.5	6.1
0.333 HP	115.0	239.2	252.4	3.743	3.448	0.579	353.1	1687	16.58	0.333	70.3	82.0	6.1
16.96 OZ-FT	115.0	238.4	251.2	3.805	3.507	0.576	360.7	1684	16.96	0.340	70.3	82.4	6.1
	115.0	232.1	243.6	4.239	3.929	0.562	409.2	1663	19.32	0.382	69.7	83.9	6.1
	115.0	222.8	232.3	4.885	4.576	0.540	482.1	1632	22.52	0.438	67.7	85.8	6.2
	115.0	213.1	221.1	5.550	5.242	0.520	552.5	1597	25.28	0.481	64.9	86.6	6.2
	115.0	202.9	209.7	6.237	5.944	0.498	623.4	1559	27.62	0.512	61.3	86.9	6.3
	115.0	192.4	198.2	6.928	6.653	0.475	691.8	1518	29.58	0.534	57.6	86.8	6.4
	115.0	181.5	186.8	7.625	7.372	0.452	758.7	1473	31.03	0.544	53.5	86.5	6.4
	115.0	170.3	175.6	8.313	8.084	0.430	821.9	1422	31.94	0.541	49.1	86.0	6.5
	115.0	158.8	164.8	8.987	8.784	0.407	881.7	1368	32.34	0.527	44.6	85.3	6.6
BDT OZ-FT	115.0	155.1	161.4	9.202	9.007	0.400	900.2	1349	32.35	0.520	43.1	85.1	6.6
	115.0	147.7	155.0	9.623	9.438	0.386	935.5	1311	32.20	0.502	40.1	84.5	6.6
	115.0	136.8	145.9	10.223	10.064	0.365	985.4	1250	31.67	0.471	35.7	83.8	6.6
	115.0	126.9	138.5	10.748	10.610	0.350	1026.5	1189	30.79	0.436	31.7	83.0	6.7
	115.0	116.3	131.4	11.280	11.164	0.332	1066.3	1119	29.46	0.392	27.5	82.2	6.7
	115.0	105.2	125.0	11.803	11.716	0.317	1103.8	1039	27.74	0.343	23.2	81.3	6.7
	115.0	95.2	120.2	12.259	12.194	0.306	1135.3	959	25.77	0.294	19.3	80.5	6.8
	115.0	85.6	116.6	12.668	12.627	0.297	1162.3	874	23.58	0.245	15.8	79.8	6.8
	115.0	76.4	114.2	13.026	13.007	0.291	1184.6	787	21.19	0.198	12.5	79.1	6.8
	115.0	67.1	112.8	13.352	13.356	0.286	1203.1	693	18.61	0.154	9.5	78.4	6.7
	115.0	57.8	112.0	13.631	13.655	0.279	1218.2	594	15.93	0.113	6.9	77.7	6.6
	115.0	48.7	112.9	13.858	13.901	0.276	1231.2	491	13.26	0.078	4.7	77.3	6.5
	115.0	40.3	114.7	14.030	14.095	0.275	1239.1	381	10.21	0.046	2.8	76.8	6.4
	115.0	32.9	116.2	14.151	14.233	0.272	1244.0	266	8.00	0.025	1.5	76.4	6.2
	115.0	26.4	118.2	14.210	14.307	0.277	1247.2	147	6.22	0.011	0.6	76.3	6.2
	115.0	23.3	123.7	14.253	14.369	0.293	1251.1	28	4.65	0.002	0.1	76.3	6.3

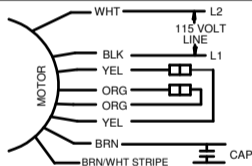
DRAWING NO. PAGE 3 of 4
4HZ67BG REV.
-

Dayton Electric Mfg. Co. Lake Forest, IL 60045 USA

Performance Data





Dayton[®]**DIRECT DRIVE FAN &
BLOWER MOTOR****HP:** 1/3**VOLTS:** 115**AMPS:** 4.0**RPM:** 1650**DUTY:** CONT**SF:** 1.0**KVA CODE:** E**ENCL:** OAO**THERMALLY PROTECTED:** AUTOMFG. NO. PROT. CODE: **MTR REF:** K55HXEZZS-2267**PH:** 1**HZ:** 60**FR:** 48Y**INS CL:** B**AMB:** 40 °C**SFA:**AVG. F.L.
EFF.Part
No **4HZ67BG****Disconnect Power Before Making Any
Electrical Connections or Changes**OPTION .3 WIRE
CONNECTION
BRN/WHT STRIPE-INSULATE

CCW	ORG	ORG
	YEL	YEL
CW	ORG	ORG
	YEL	YEL

BLACK-L1



Mfd for Dayton Electric Mfg. Co., Lake Forest, IL 60045 USA

Made in Mexico