

# Twist-Lock® Devices 20A, 125/250V AC, 3 Pole, 4 Wire Grounding Watertight Safety-Shroud® Plug

# HUBBELL

## Features

- Impact resistant shroud protects blades against bending and breaking.
- Reduces exposure to arcing when connecting or disconnecting under load.
- Superior cord grip design protects terminations from excess strain.

## Ordering Information

| Description                             | Cord Diameter       | UPC          | Catalog Number |
|---|---------------------|--------------|----------------|
| Black PBT housing,<br>white PBT clamps. | .350"-1.150" (9-29) | 783585231280 | HBL2411SW      |

## Listings

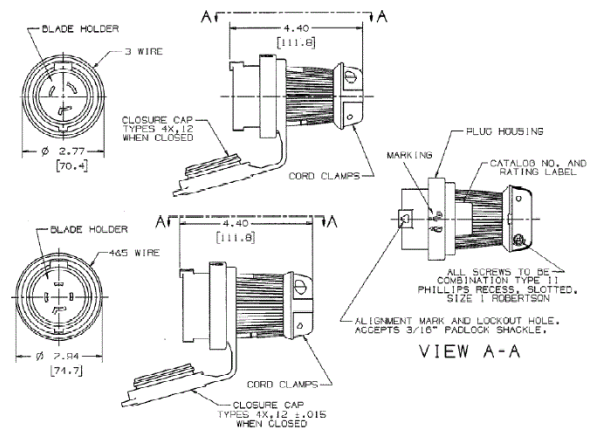
Listed to UL 498  
Fed.Spec. W-C-596  
Certified to CSA C22.2 No.42  
UL Listed, CSA Certified to Type 4, 4X and Type 12

## Specifications

|                      |   |
|----------------------|---|
| Housing / Cord Clamp | PBT   |
| Terminal Retainer    | Clear polycarbonate                           |
| Blades               | Brass   |
| Terminal Screws      | #10-32 Brass (Phillips / Slotted / Robertson) |
| Terminal Clamp       | Cold rolled steel – nickel plated             |
| Assembly Screws      | Stainless Steel                               |
| Watertight Gland     | Neoprene                                      |
| Closure Plug         | Santoprene                                    |

## Performance

|                         |  |
|-------------------------|--|
| <b>Electrical</b>       |  |
| Current Interrupting    | Certified for current interrupting at full rated current |
| Dielectric Voltage      | Withstands 2,000V minimum                                |
| <b>Mechanical</b>       |  |
| Terminal Accommodation  | #16 AWG - #8 AWG stranded copper wire only.              |
| Terminal Identification | Terminals identified in accordance with UL 498           |
| <b>Environmental</b>    |  |
| Flammability            | V0 per UL94 or CSA 22.2 No 0.17                          |
| Moisture Resistance     | Type 4, 4X, 12, IP66 suitability                         |
| Operating Temperatures  | Maximum Continuous 75°C; Minimum -40°C (w/o impact)      |



## Accessories

|                                     |           |
|-------------------------------------|-----------|
| Watertight Safety Shroud Connector  | HBL2413SW |
| Watertight Safety Shroud Receptacle | HBL2410SW |

## Resources

Customer Use Drawing  
eCatalog

Dimensions in Inches (mm)

Hubbell Wiring Device-Kellems • Hubbell Incorporated (Delaware) • 40 Waterview Drive • Shelton, CT 06484

Phone (800) 288-6000 • Fax (800) 255-1031 • Specifications subject to change without notice.

