



# PL-S

## 5PL-S/LED/13H/835/IF5/P/2P 20/1

Philips LED PL-S lamps make the transition to LED from CFL lamps as simple as replacing a lamp. The InstantFit (UL Type A) 2-pin PL-S LED lamps are available in a wide array of color temperatures. They quickly and effectively replace 13W 2-pin compact fluorescent PL-S lamps.

### Product data

General Information	
Cap-Base	GX23 [ GX23]
EU RoHS compliant	Yes
Nominal Lifetime (Nom)	50000 h
Switching Cycle	50000X
Light Technical	
Color Code	835 [ CCT of 3500K]
Beam Angle (Nom)	120 °
Luminous Flux (Nom)	560 lm
Color Designation	White (WH)
Correlated Color Temperature (Nom)	3500 K
Luminous Efficacy (rated) (Nom)	112.00 lm/W
Color Consistency	<6
Color Rendering Index (Nom)	82
LLMF At End Of Nominal Lifetime (Nom)	70 %
Operating and Electrical	
Input Frequency	50 to 60 Hz
Power (Nom)	5 W
Lamp Current (Max)	50 mA
Lamp Current (Min)	15 mA
Starting Time (Nom)	0.5 s

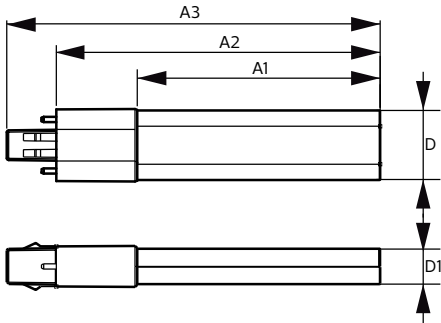
Warm Up Time to 60% Light (Nom)	0.5 s
UL Type	Type A - works on ballast
Power Factor (Nom)	0.9
Voltage (Nom)	120-277 V
Temperature	
T-Ambient (Max)	45 °C
T-Ambient (Min)	-20 °C
T-Storage (Max)	65 °C
T-Storage (Min)	-40 °C
T-Case Maximum (Nom)	75 °C
Controls and Dimming	
Dimmable	No
Mechanical and Housing	
Bulb Material	Plastic
Product Length	170 mm
Bulb Shape	Tube, single-ended
Approval and Application	
Energy Efficiency Label (EEL)	Not applicable
Energy Saving Product	Yes

# PL-S

Approval Marks	UL certificate RoHS compliance
Energy Consumption kWh/1000 h	- kWh
<b>Product Data</b>	
Order product name	5PL-S/LED/13H/835/IF5/P/2P 20/1
EAN/UPC - Product	046677529574
Order code	929001863004

Numerator - Quantity Per Pack	1
Numerator - Packs per outer box	20
Material Nr. (12NC)	929001863004
Net Weight (Piece)	0.043 kg

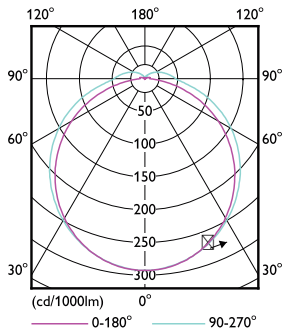
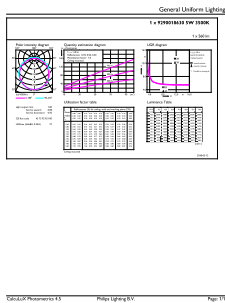
## Dimensional drawing



PLED PLS 120-277V 5-13W 580lm 3500K GX23

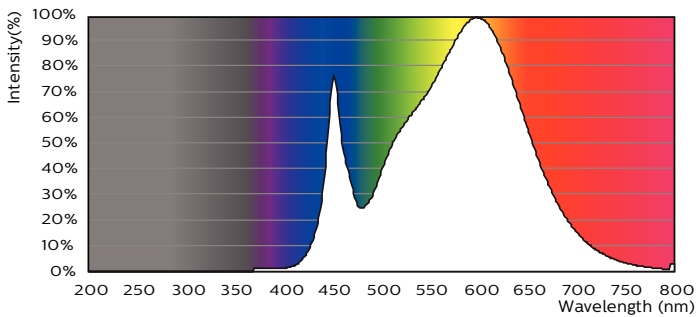
Product	D	D1	A1	A2	A3
5PL-S/LED/13H/835/IF5/P/2P	31.1 mm	15.8 mm	108 mm	144 mm	166 mm
20/1					

## Photometric data



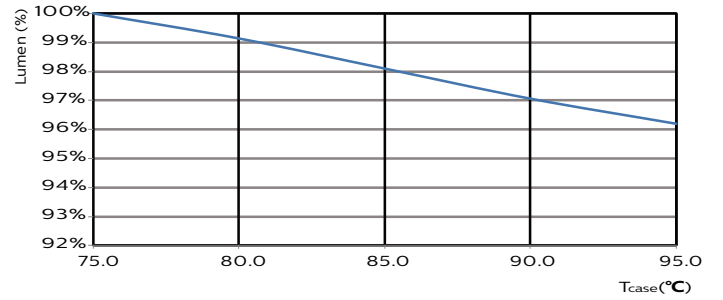
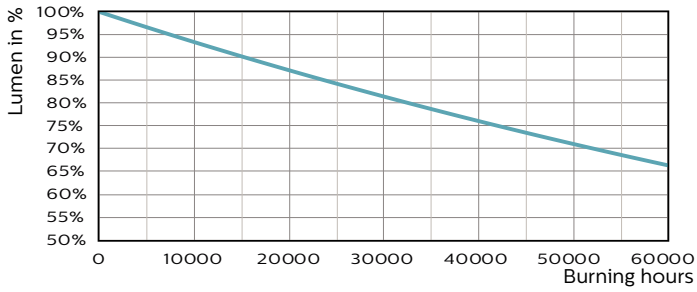
LEDtube PLS 5W GX23 835 2P 12D ND

LEDtube PLS 5W GX23 827 2P 12D ND



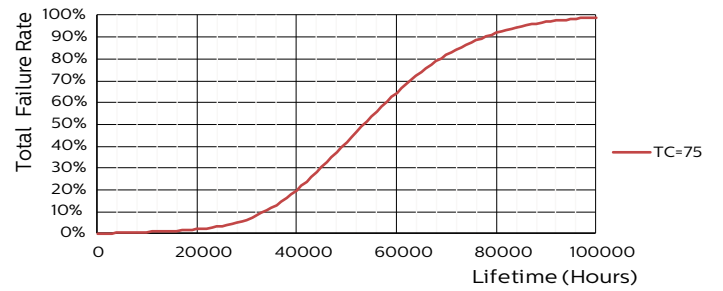
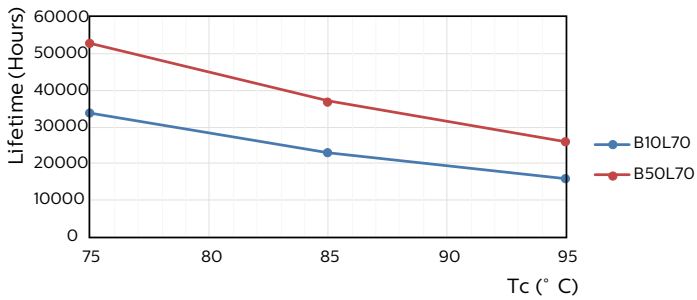
LEDtube PLS 5W GX23 835 2P 12D ND

Lifetime



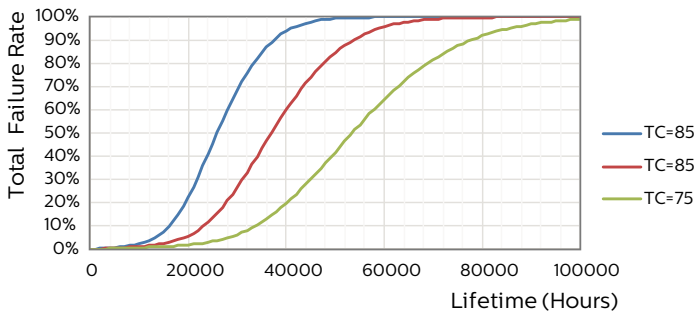
LEDtube PLS 5W GX23 827 2P 12D ND

LEDtube PLS 5W GX23 827 2P 12D ND



LEDtube PLS 5W GX23 827 2P 12D ND

LEDtube PLS 5W GX23 827 2P 12D ND



LEDtube PLS 5W GX23 827 2P 12D ND

