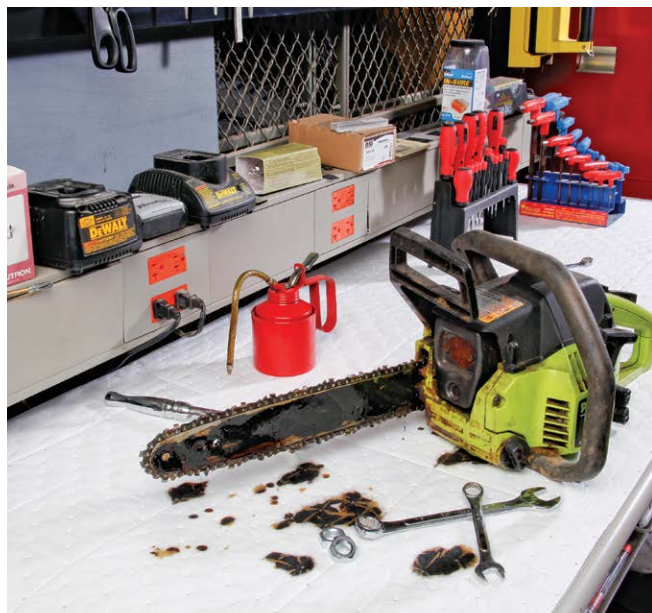


PROTECTOR

Tough multi-laminate mat stands up to punishing, oily applications

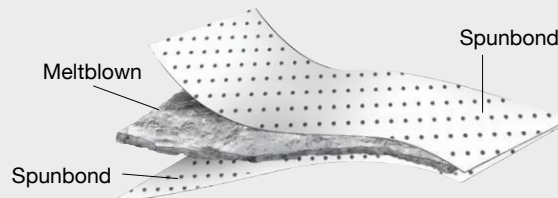


Features and Benefits

- Abrasion-resistant outer layers of SpunBond material are strong with low-lint benefits
- Mat is a great choice for lining tool benches, wiping down machinery or cleaning oily tools and parts
- Perfect for industrial applications in demanding environments where durability is most important
- In outdoor applications, the mat won't tear when pulled up from frozen ground
- Pads perforated at 7.5" up the center
- Rolls perforated every 7.5" vertically and cross-perforated at 17" horizontally

PROTECTOR Mat Construction

High-loft meltblown sorbent is ultrasonically bonded between two layers of lint-free spunbond fabric.



PROTECTOR™ Mat

White Oil-Only Pads

Grainger #	Item #	Description	Size	Units/Pkg	Absorbs/Pkg
443T25	WPL100H	HeavyWeight Pads	15" x 19"	100	28.9 gal.
443T26	WPL100M	MediumWeight Pads	15" x 19"	100	23.4 gal.
443T99	WPL-M	MediumWeight Pads	15" x 18"	100	22.2 gal.
443T27	WPL200S	LightWeight Pads	15" x 19"	200	25 gal.

White Oil-Only Rolls

Grainger #	Item #	Description	Size	Units/Pkg	Absorbs/Pkg
443T48	WRL150H	HeavyWeight Roll	30" x 150'	1	54.9 gal.
443T58	WRSL150H	HeavyWeight Split Rolls	15" x 150'	2	54.9 gal.
443T49	WRL150M	MediumWeight Roll	30" x 150'	1	44.4 gal.
443T60	WRSL150M	MediumWeight Split Rolls	15" x 150'	2	44.4 gal.
443T59	WRSL150H-1	HeavyWeight Split Roll	15" x 150'	1	27.4 gal.

HYC

Helps you comply with 29 CFR 1910.22(a)(2), 29 CFR 1910.120(j)(1), 29 CFR 1910.1450(e) and 49 CFR 173.12 (b)(2)(iv).