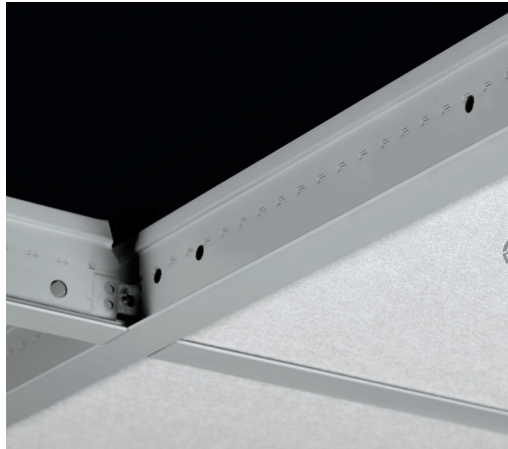


# CLEAN ROOM™

15/16" and 1-1/2" Exposed Tee Suspension System  
aluminum



▲ Clean Room™ suspension system

This suspension system with integral gasket is designed specifically for clean rooms, food processing areas, and data centers.

## KEY SELECTION ATTRIBUTES

- Suitable for use in Class 5 (Class 100 clean rooms as defined by ISO Standard 14644-1 (Federal Standard 209E) when used with Clean Room™ FL, Clean Room VL, Ultima® Health Zone™, and Optima® Health Zone™
- CleanAssure™ family of products – includes disinfectable panels, suspension systems, and trim
- Seismic Rx® Suspension System; ICC-ES approach to installations (ESR-1308)
- Integral gasket for better seal between panel and grid
- Integral main beam splice for easy connections and module control
- XL® staked-on end detail
- Rotary-stitched for additional torsion strength
- 10-year limited warranty; 30-year with HumiGuard® Plus

## TYPICAL APPLICATIONS

- Laboratories / Clean Rooms
- Pharmaceutical facilities
- Automotive and aerospace
- Computer rooms
- Hospitals
- Food processing facilities
- High-tech manufacturing
- Data Centers
- MRI suites

## COLOR



## VISUAL SELECTION

Item No.	Description	Rout Spacing	Dimensions (Inches)	HANGER SPACING* LBS./LFT			
				2 Ft.	4 Ft.	5 Ft.	
<b>CLEAN ROOM Co-Extruded Aluminum (Gasketed) 15/16"</b>	EA7900	12" ID Main Beam	12" O.C.	144 x 15/16 x 2"	N/A	12.25	N/A
	EA7940	4' Cross Tee	24" O.C.	48 x 15/16 x 2"	N/A	15.32	N/A
	EA7920	2' Cross Tee		24 x 15/16 x 2"	66.62	N/A	N/A
	EA7812	12' Hemmed Angle Molding		144 x 15/16 x 15/16"	N/A	N/A	N/A
<b>Other Sizes</b>	Main beams L: 36" - 144" / Cross tees L: 24" - 144" / Rout spacing 6" from ends, 12" thereafter						
<b>CLEAN ROOM Co-Extruded Aluminum (Gasketed) 1-1/2"</b>	EA7903	12" HD Main Beam	12" O.C.	144 x 1-1/2 x 2"	N/A	16.7	8.4
	EA7947	4' Cross Tee	24" O.C.	48 x 1-1/2 x 2"	N/A	17.66	N/A
	EA7927	2' Cross Tee		24 x 1-1/2 x 2"	60.55	N/A	N/A
	EA7813	12' Hemmed Angle Molding		144 x 15/16 x 15/16"	N/A	N/A	N/A

\* Simple Span

## PERFORMANCE

Fire Guard™	Seismic Category	CleanAssure™ Disinfectable Grid		
		Fog	Spray	Wipe
DEF	DEF	•	•	•
•	•	•	•	•
•	•	•	•	•
•	•	•	•	•
•	•	•	•	•
•	•	•	•	•

## PACKAGING

Pieces/ Carton	LFT/ Carton
20	240
60	240
60	120
30	360
Varies	Varies
12	144
36	144
36	72
30	360

Dots represent high level of performance.

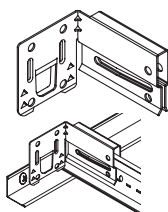
## ACCESSORIES

**BERC2 – 2" Beam End Retaining Clip** – Allows you to create a code-compliant Seismic D, E, F ceiling installation while eliminating the need to use 2" wall molding or spreader bars.

ALBERC2 (aluminum) – 200 pcs

BERC2 (Steel) – 200 pcs  
FZBERC2 (Steel) – 50 pcs

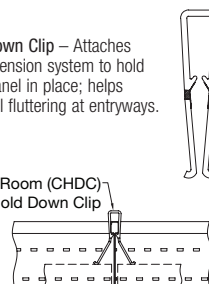
ALBERC2 (Aluminum) – 200 pcs  
FZALBERC2 (Aluminum) – 50 pcs



**CHDC – Clear Hold Down Clip** – Attaches to top bulb of the suspension system to hold 1/16" to 5/8" lay-in panel in place; helps to prevent ceiling panel fluttering at entryways.

CHDC – 50 pcs  
FZCHDC – 50 pcs

Clean Room (CHDC) Hold Down Clip



# CLEAN ROOM™

15/16" and 1-1/2" Exposed Tee Suspension System  
aluminum

**LEED® WELL™ LBC**

UP TO **50% RECYCLED CONTENT**

- energy management
- construction waste mgmt
- regional materials
- design for flexibility
- EPD
- recyclable/producer resp.
- biobased materials
- recycled content
- sourcing of raw materials
- material ingredient reporting
- low emitting materials
- lighting quality
- acoustics

LOCATION DEPENDENT

Well Building Standard™ (WELL)  
Living Building Challenge® (LBC)

## MAXIMUM FIXTURE WEIGHT

Item No.	CONFIGURATION	FIXTURE*		PLANNING MODULE		HANGER SPACING		MAXIMUM WEIGHT	
		A	B	A	B	A	B	A	B
Main Beam to Main Beam EA7903		24" x 48"	N/A	48" x 48"	N/A	48"	N/A	100.0 lbs.	N/A
		24" x 48"	12" x 48"	48" x 48"	48" x 48"	48"	48"	70.0 lbs.	100.0 lbs.
		12" x 48"	N/A	48" x 48"	N/A	48"	N/A	69.0 lbs.	N/A
Main beams tested as follows: EA7903 tested at 16.74 lbs./lin. ft. to 1/360 of 4' span.									
Cross Tee to Cross Tee EA7947		24" x 48"	24" x 24"	48" x 48"	48" x 48"	48"	48"	100.0 lbs.	100.0 lbs.
		24" x 48"	24" x 24"	48" x 48"	48" x 48"	48"	48"	100.0 lbs.	100.0 lbs.
48" cross tees tested as follows: EA7947 tested at 18.4 lbs./lin. ft. to 1/360 of 4' span.									

### Main Beam | Hanger Wire (•)

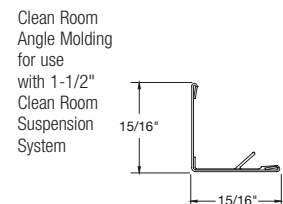
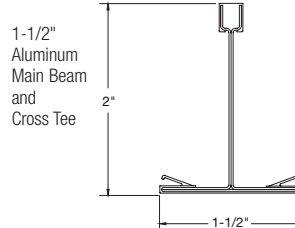
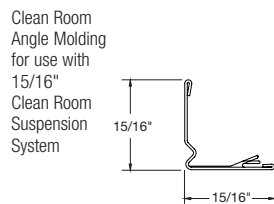
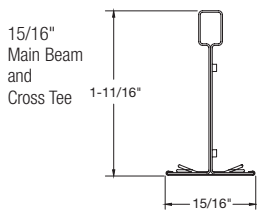
\* Fixtures weighing more than 56 lbs. should be independently supported. Fixture weight is based on single fixture only. For end-to-end fixtures or other configurations not shown, consult your Armstrong representative.  
NOTE: The above data is based on 48" hanger wire spacing, board weight of 1 lb./sq. ft., maximum deflection of tees not to exceed 1/360 of the span, and suspension system installed in accordance with ASTM C 636.

## LIGHT FIXTURES

NOTE: Specify light fixtures designed to install with 2" web height suspension systems.

Manufacturer	Item #
Lithonia	CLRM-150 SRT-2x4_F MP4270
Guth	KLEENSEAL KRT 200
Morlite	CRGHEPA24 Series

## DETAILS



## SEISMIC PERFORMANCE

**Main Beams**  
EA7903, EA7900  
Minimum Lbs. To Pull Out Compression/Tension  
294.6

**Cross Tees**  
\*\* EA7947, EA7927, EA7940, EA7920  
Minimum Lbs. To Pull Out Compression/Tension  
492.4

**ICC Reports**  
For areas under ICC jurisdiction, see ICC evaluation report number 1308 for allowable values and/or conditions of use concerning the suspension system components listed on this page. The report is subject to re-examination, revisions, and possible cancellation.  
\*\* Requires use of #6 Phillips self-tapping screw through cross tee end detail.

## PHYSICAL DATA

**Material**  
1-1/2" Co-Extruded Aluminum with PVC face – Gasketed  
15/16" Co-Extruded Aluminum with aluminum-capped face – Gasketed  
**Surface Finish**  
Textured PVC for 1-1/2"  
Baked polyester for 15/16"  
White aluminum – Capped face

Manufactured and tested in accordance with ASTM C635  
**Cross Tee/Main Beam Interface**  
Co-Extruded Aluminum Clean Room – Flush Fit  
**Cleaning and Disinfecting**  
Cleaning and CDC recommended disinfecting options available on [armstrongceilings.com/cleaning](http://armstrongceilings.com/cleaning)

**End Detail for 1-1/2"**  
Main Beam: Staked-on clip  
Cross Tee: Integral hook  
**End Detail for 15/16"**  
Main Beam: Integral  
Cross Tee: Staked-on clip