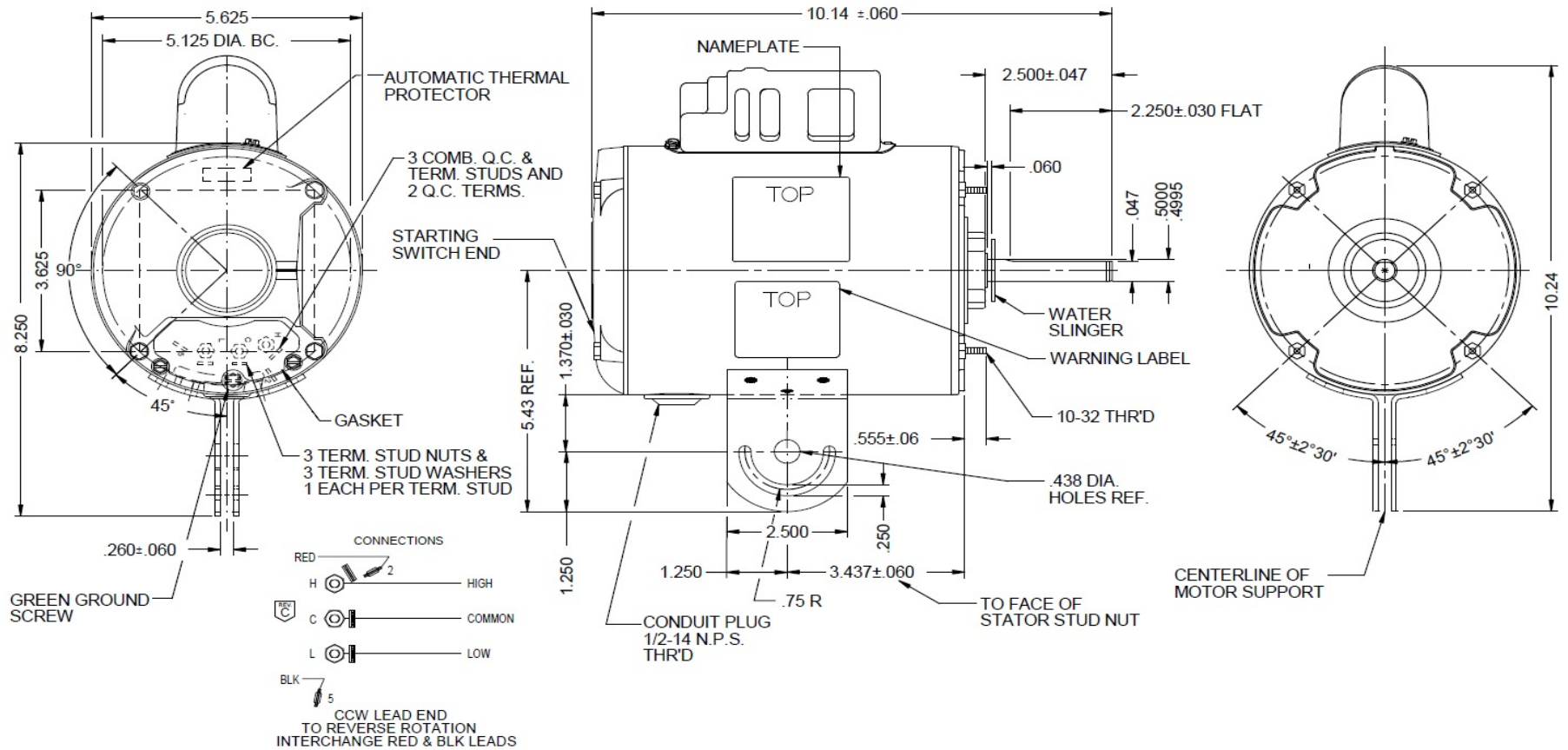


# Dimensional Drawing

## 3M504BG

REV.  
-

MODEL	REF	CUSTOMER	HP	VOLTS	AMPS	HZ	RPM	ROTATION	CUSTOMER PT. NO.	DESCRIPTION / REMARKS
K55HXFAB-2343		GRAINGER	1/4	115	3.1	60	1075/2 SPD	CCW LEAD END REV	3M504BG	PSC, 48YZ, TEAO, BALL BEARING



DRAWING NO. PAGE 1 of 1  
3M504BG REV. -

**3M504BG**

REV.

-

## SHADED-POLE & PSC MOTOR PERFORMANCE

HP:	1/4				
Poles:	6				
Ambient (°C):	40				
Altitude (FASL):					
No. of Speeds:	2				
<b>HIGH SPEED</b>					
Volts:	115	115			
HZ:	60	60			
Service Factor:	1				
Efficiency:	@ Rated Load	62.3			
Power Factor:	@ Rated Load	85.6			
Amps:	@ No Load				
	@ Rated Load	3.1	NP		
	@ Locked Rotor	7.3			
RPM:	@ Rated Load	1091			
Torques:	Breakdown	25.4			
	Locked Rotor	5.5			
	Pull-Up	4.9			
	Rated Load	19.5	NP		
	Service Factor	19.5	NP		
Watts:	Rated Load	304			
Temperature Rise:	@ Rated Load	-			
Thermal Protector:	Trip Temp (°C)	-			
Winding Material:	Start (Auxiliary)	Cu			
	Run (Main)	Cu			
Capacitor(s):	Run (MFD / Volts)	5 mFd, 440v			
	No. of Run Capacitors				

## MEDIUM-HIGH SPEED

HP:					
Volts:					
HZ:					
Efficiency:	@ Rated Load				
Power Factor:	@ Rated Load				
Amps:	@ No Load				
	@ Rated Load				
	@ Locked Rotor				
Torques: Oz.Ft. / Lb.In. (Circle One)	Breakdown				
	Locked Rotor				
	Pull-Up				
	Rated Load				
Watts:	@ Rated Load				
Temperature Rise:	@ Rated Load				

DRAWING NO. PAGE 1 of 1	REV.
<b>3M504BG</b>	-

# Performance Data



**3M504BG**

REV.

-

## Dayton Manufacturing Company

### Motor Description

### Test Conditions

Model:	K055FAB2343	3M504BG	Test Type:	Start	Run Cap:	5
Motor ID:	2		Test Number:	8	Start Cap:	0µfd
Poles:	6		Poles:	6	Environment:	22.4 Deg C 28 % RH 968 hPa
Volts:	115		Volts:	115	Tested:	2/12/2016 2:22:56 PM
Frequency:	60		Hz:	60	Tested By:	Navarro, Susana
HP:	1/4		Rotation:		Gear Ratio:	1:1
Speed:	1075		Special Cond:		Bearing Friction:	-0.12 Oz-Ft
Phase:	1		Speed Conn:	M1	Windage Torque:	-0.83 Oz-Ft
Protector:	7AM036-A5		TestBoard:	CMD InLine Three Phase #2 Fixture #1		

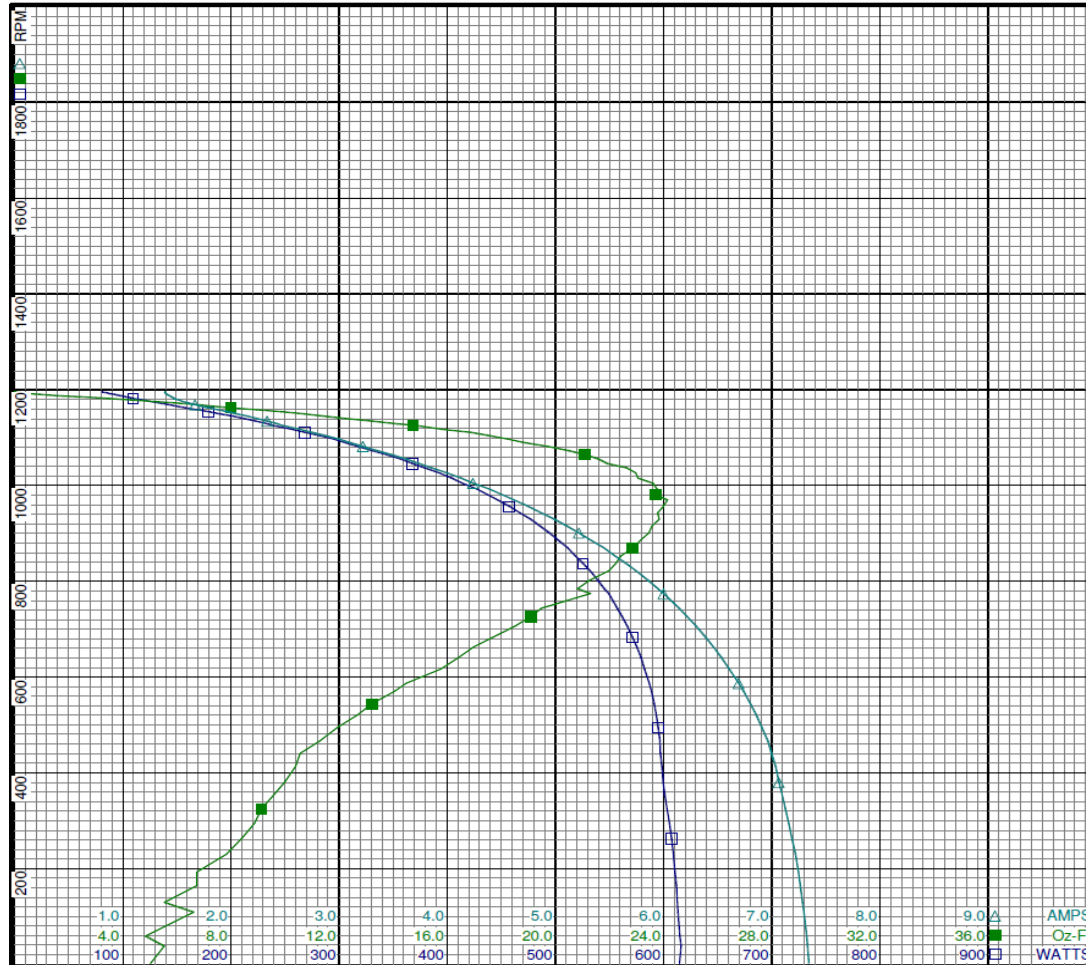
Special Points	Vline (V)	Vaux (V)	Vcap (V)	Iline (A)	Watts	RPM	Tq (Oz-ft)	HP	Eff (%)	PF (%)
PUT OZ-FT	115.0	51.2	219.5	7.330	615.9	38	5.53	0.002	0.3	73.1
	115.0	51.1	214.5	7.282	612.5	129	5.54	0.009	1.0	73.1
	115.0	52.7	209.9	7.216	608.9	230	7.84	0.021	2.6	73.4
	115.0	55.1	205.4	7.124	603.0	325	9.14	0.035	4.4	73.6
	115.0	60.0	201.8	7.034	598.3	413	10.39	0.051	6.4	74.0
	115.0	68.0	200.6	6.908	594.8	494	11.93	0.070	8.8	74.9
	115.0	76.6	200.6	6.736	588.6	571	14.06	0.095	12.1	76.0
	115.0	85.4	200.7	6.531	578.9	641	16.42	0.125	16.1	77.1
	115.0	95.0	201.8	6.299	566.3	706	18.50	0.156	20.5	78.2
	115.0	106.7	204.6	6.000	549.2	774	21.29	0.196	26.6	79.6
	115.0	116.8	208.5	5.743	532.0	822	21.98	0.215	30.2	80.6
	115.0	128.3	214.0	5.446	511.2	869	22.87	0.237	34.5	81.6
	115.0	141.4	222.0	5.101	485.4	915	23.57	0.257	39.5	82.8
	115.0	154.4	231.5	4.745	457.3	957	23.99	0.273	44.6	83.8
	115.0	167.4	242.2	4.386	427.1	992	23.75	0.281	49.0	84.7
	115.0	181.1	255.0	3.997	392.5	1026	22.96	0.280	53.3	85.4
	115.0	194.4	268.5	3.614	356.6	1055	21.58	0.271	56.7	85.8
	115.0	207.5	283.2	3.222	317.4	1081	19.71	0.254	59.6	85.6
	115.0	219.3	296.8	2.865	281.1	1104	17.48	0.230	61.0	85.3
	115.0	231.8	313.0	2.461	237.1	1126	14.74	0.198	62.2	83.8
	115.0	238.6	322.3	2.240	211.9	1140	12.23	0.166	58.4	82.3
	115.0	245.6	333.8	1.964	179.5	1154	9.84	0.135	56.2	79.5
	115.0	250.9	344.9	1.724	150.0	1165	7.34	0.102	50.6	75.7
6.425 OZ-FT	115.0	252.9	349.6	1.645	139.0	1170	6.43	0.089	48.0	73.5
	115.0	255.6	355.5	1.554	125.7	1175	5.17	0.072	42.9	70.3
	115.0	259.1	362.8	1.471	108.9	1182	3.21	0.045	31.0	64.4
	115.0	262.2	368.5	1.419	94.6	1188	1.22	0.017	13.6	58.0
	115.0	264.0	371.6	1.394	85.5	1193	0.21	0.003	2.6	53.3
	115.0	264.9	372.5	1.387	81.3	1195	0.00	0.000	0.0	51.0

# Performance Data



**3M504BG**

REV.  
-



**Curve Descriptions:**

Motor(1) Test 8 Start 115V 60 Hz 6P  
M1 5ufd Run

- SPEED vs WATTS
- SPEED vs TORQUE
- △ SPEED vs ILine

**Motor Ratings:**

(1) K055FAB2343 3M504BG

DRAWING NO.	PAGE 2 of 4	REV.
<b>3M504BG</b>		-

Dayton Electric Mfg. Co. Lake Forest, IL 60045 USA



**3M504BG**

REV.

-

## Dayton Manufacturing Company

### Motor Description

Model: K055FAB2343 3M504BG  
 Motor ID: 2  
 Poles: 6  
 Volts: 115  
 Frequency: 60  
 HP: 1/4  
 Speed: 1075  
 Phase: 1  
 Protector: 7AM036-A5

### Test Conditions

Test Type: Run Run Cap: 5  
 Test Number: 6 Start Cap: 0µfd  
 Poles: 6 Environment: 22.4 Deg C 28 % RH 968 hPa  
 Volts: 115 Tested: 2/12/2016 2:21:20 PM  
 Hz: 60 Tested By: Navarro, Susana  
 Rotation: Gear Ratio: 1:1  
 Special Cond: Bearing Friction: -0.13 Oz-Ft  
 Speed Conn: M1 Windage Torque: -0.75 Oz-Ft  
 TestBoard: CMD InLine Three Phase #2 Fixture #1

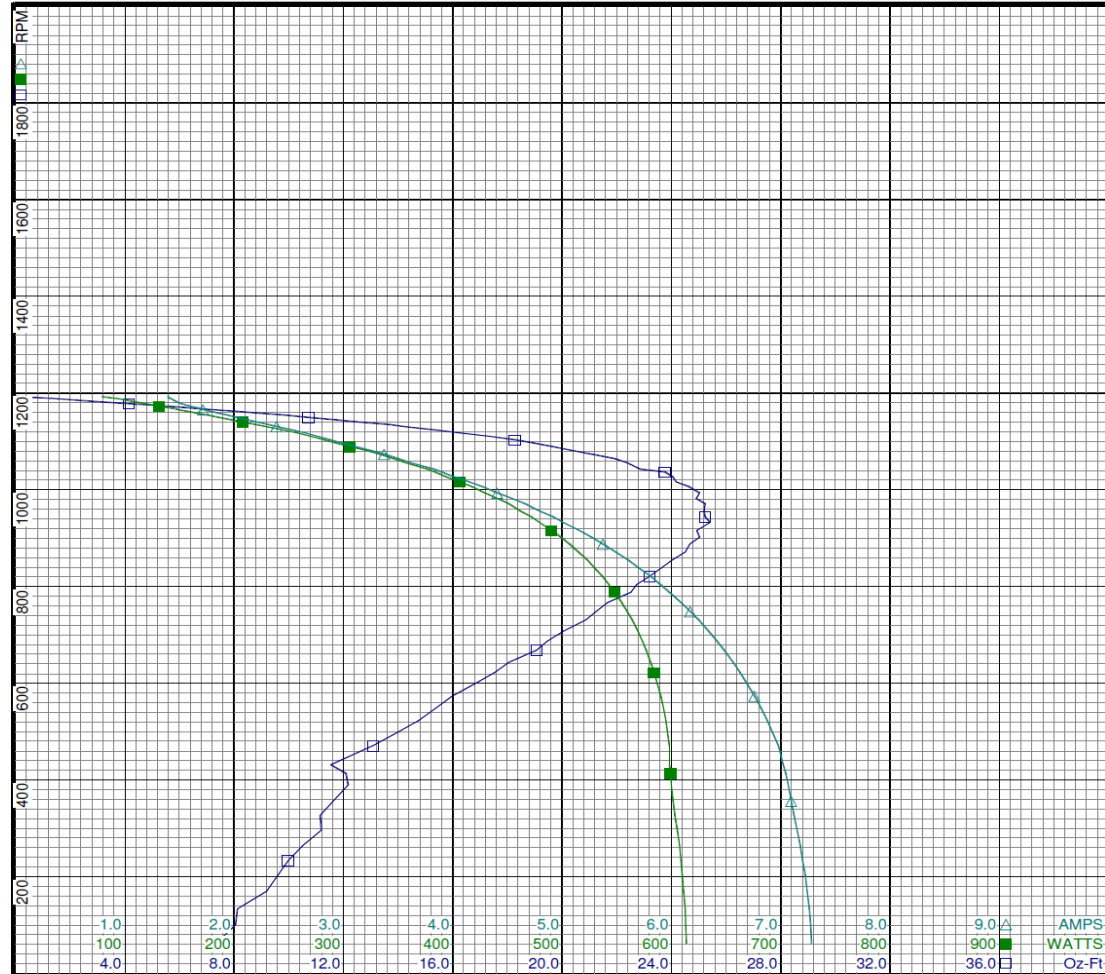
Special Points	Vline (V)	Vaux (V)	Vcap (V)	Iline (A)	Watts	RPM	Tq (Oz-ft)	HP	Eff (%)	PF (%)
	115.0	264.9	372.5	1.391	79.2	1193	0.00	0.000	0.0	49.5
	115.0	262.8	368.3	1.412	91.3	1189	1.29	0.018	15.0	56.2
	115.0	259.6	362.5	1.463	106.4	1183	2.77	0.039	27.3	63.2
	115.0	255.6	354.9	1.554	124.8	1175	4.87	0.068	40.7	69.9
	115.0	250.9	345.1	1.717	148.5	1165	7.19	0.100	50.1	75.2
<b>7.33 OZ-FT</b>	<b>115.0</b>	<b>250.7</b>	<b>344.5</b>	<b>1.728</b>	<b>149.9</b>	<b>1165</b>	<b>7.33</b>	<b>0.102</b>	<b>50.6</b>	<b>75.4</b>
	115.0	246.1	334.9	1.936	175.5	1154	9.84	0.135	57.5	78.8
	115.0	239.0	323.3	2.213	208.0	1140	12.61	0.171	61.4	81.7
	115.0	229.7	310.1	2.542	245.8	1123	15.42	0.206	62.6	84.1
	115.0	219.0	296.5	2.877	282.0	1103	18.27	0.240	63.5	85.2
<b>0.25 HP</b>	<b>115.0</b>	<b>214.3</b>	<b>290.9</b>	<b>3.025</b>	<b>297.4</b>	<b>1094</b>	<b>19.20</b>	<b>0.250</b>	<b>62.7</b>	<b>85.5</b>
<b>19.53 OZ-FT</b>	<b>115.0</b>	<b>212.4</b>	<b>288.6</b>	<b>3.086</b>	<b>303.7</b>	<b>1091</b>	<b>19.53</b>	<b>0.254</b>	<b>62.3</b>	<b>85.6</b>
	115.0	207.5	282.8	3.239	319.6	1082	20.30	0.261	61.0	85.8
	115.0	194.9	269.0	3.613	356.3	1056	22.37	0.281	58.9	85.7
	115.0	181.5	255.1	4.012	394.0	1026	24.05	0.294	55.7	85.4
	115.0	167.6	242.3	4.408	429.2	993	25.03	0.296	51.4	84.7
	115.0	154.3	231.0	4.787	461.2	957	25.20	0.287	46.4	83.8
<b>BDT OZ-FT</b>	<b>115.0</b>	<b>145.9</b>	<b>224.8</b>	<b>5.011</b>	<b>479.3</b>	<b>932</b>	<b>25.42</b>	<b>0.282</b>	<b>43.9</b>	<b>83.2</b>
	115.0	140.6	221.1	5.157	490.4	916	24.93	0.272	41.3	82.7
	115.0	128.1	213.5	5.490	515.0	871	24.50	0.254	36.8	81.6
	115.0	116.0	207.6	5.806	536.8	821	23.21	0.227	31.5	80.4
	115.0	104.7	203.7	6.089	554.5	766	21.66	0.198	26.6	79.2
	115.0	94.5	201.4	6.342	569.3	707	20.05	0.169	22.1	78.1
	115.0	85.1	200.4	6.565	581.1	643	18.05	0.138	17.7	77.0
	115.0	76.4	200.3	6.760	590.3	573	15.97	0.109	13.8	75.9
	115.0	67.9	200.6	6.924	596.4	499	14.00	0.083	10.4	74.9
	115.0	59.8	201.5	7.048	599.4	413	12.09	0.059	7.4	74.0
	115.0	55.0	204.9	7.122	603.0	327	11.14	0.043	5.4	73.6
	115.0	52.6	209.5	7.200	608.6	233	9.98	0.028	3.4	73.5
	115.0	51.1	213.8	7.261	612.6	133	8.12	0.013	1.6	73.4

# Performance Data



**3M504BG**

REV.  
-



**Curve Descriptions:**

Motor(1) Test 6 Run 115V 60 Hz 6P  
M1 5ufd Run

- SPEED vs TORQUE
- SPEED vs WATTS
- △ SPEED vs ILine

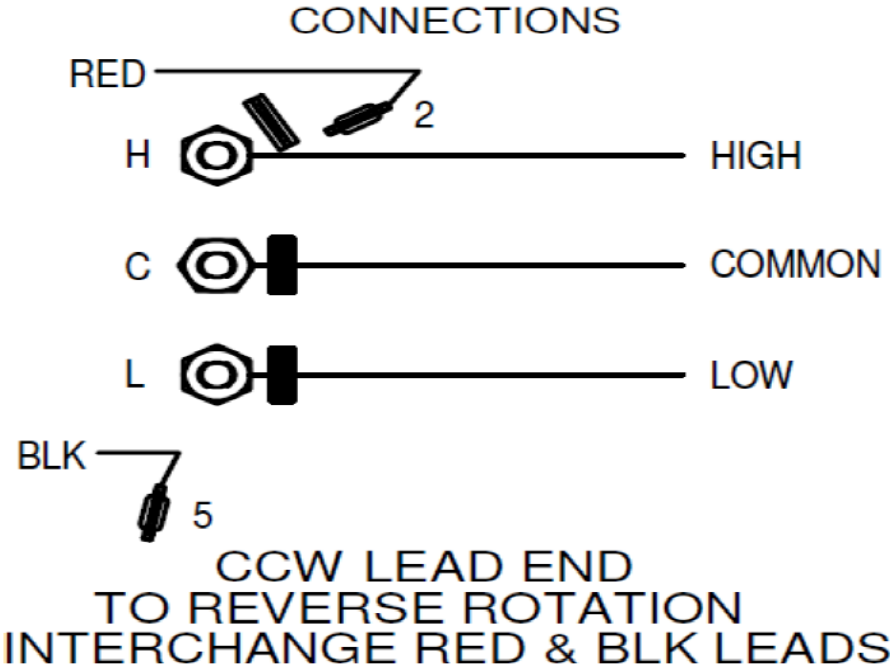
**Motor Ratings:**

(1) K055FAB2343 3M504BG

DRAWING NO.	PAGE 4 of 4	REV.
<b>3M504BG</b>		-

Dayton Electric Mfg. Co. Lake Forest, IL 60045 USA

**3M504BG**      REV.  
-



DRAWING NO.	PAGE 1 of 1	REV.
3M504BG		-

**Dayton**®

# PEDESTAL FAN MOTOR

HP: 1/4

VOLTS: 115

AMPS: 3.1

RPM: 1075/2 SPD

DUTY: CONT

SF: 1.0

KVA CODE: A

ENCL: TEAO

THERMALLY PROTECTED: AUTO

MFG. NO.   PROT. CODE:  7A010 

MTR REF: K55HXFAB-2343

PH: 1

HZ: 60

FR: 48YZ

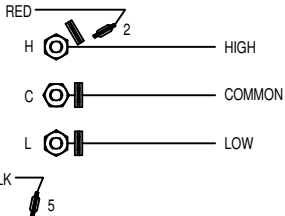
INS CL: B

AMB: 40 °C

SFA:

AVG. F.L.  
EFF.[ BAR CODE ]Part  
No 3M504BG**Disconnect Power Before Making Any  
Electrical Connections or Changes**

## CONNECTIONS



CCW LEAD END  
TO REVERSE ROTATION  
INTERCHANGE RED & BLK LEADS



Mfd for Dayton Electric Mfg. Co., Lake Forest, IL 60045 USA

[ Made in Mexico ]