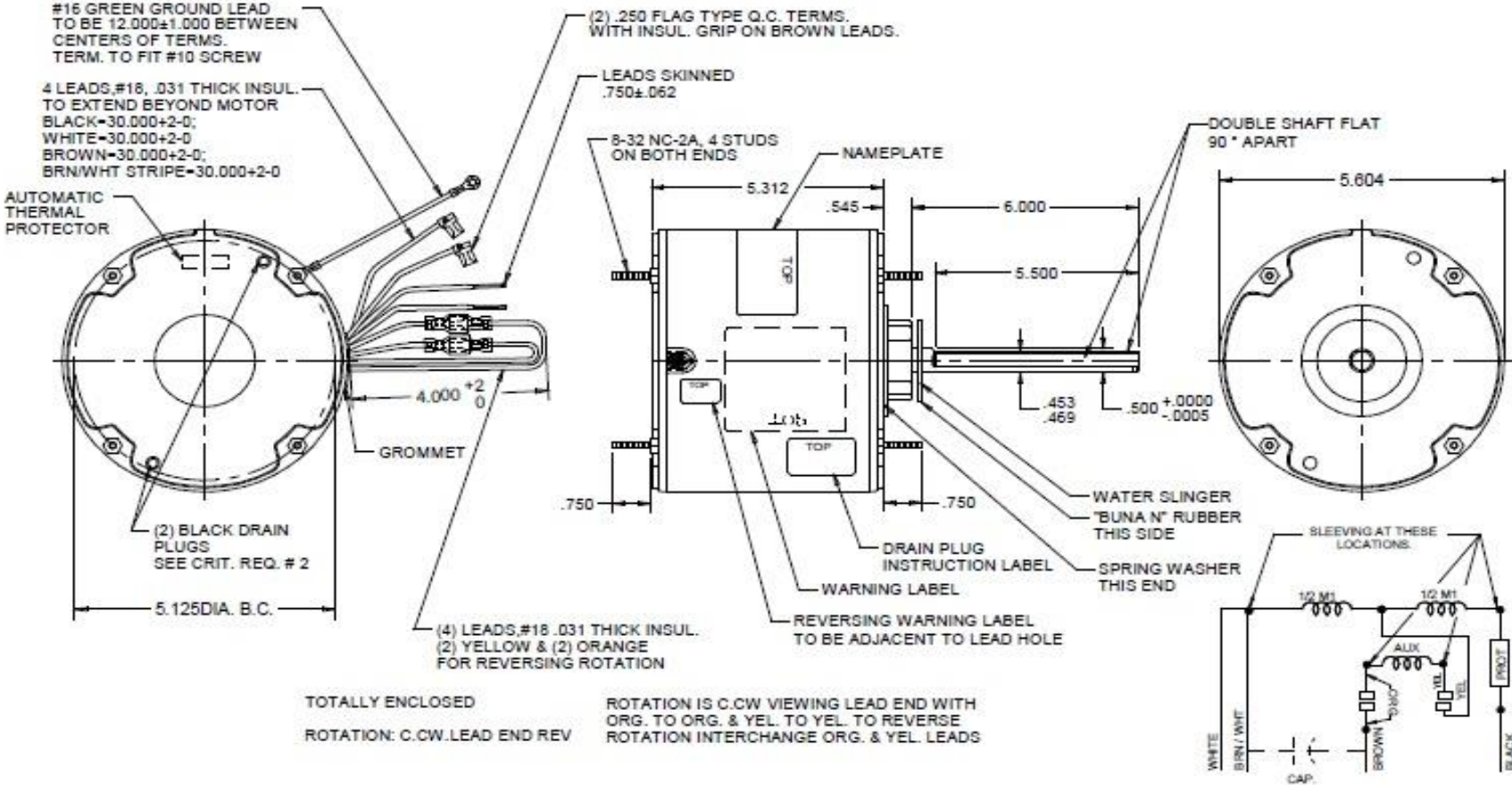


Dimensional Drawing



3LU98BJ REV. -

MODEL	REF	CUSTOMER	HP	VOLTS	AMPS	HZ	RPM	ROTATION	CUSTOMER P/N	DESCRIPTION / REMARKS
K55HXTDP-2348		DAYTON	1/2	460	1.5	60	1075	C.W. LEAD END REV	3LU98BJ	BALL BEARING



DRAWING NO. PAGE 1 of 1 REV. -
3LU98BJ

3LU98BJ

 REV.
-

SHADED-POLE & PSC MOTOR PERFORMANCE

HP:	1/2							
Poles:	6							
Ambient (°C):	40							
Altitude (FASL):	1000							
No. of Speeds:	1							
HIGH SPEED								
Volts:	460	115	208	230	277	460	100	200
HZ:	60	60	60	60	60	60	50	50
Service Factor:	1.0							
Efficiency:	@ Rated Load					63.6		
Power Factor:	@ Rated Load					88.4		
Amps:	@ No Load							
	@ Rated Load					1.8		
	@ Locked Rotor					4.2		
RPM:	@ Rated Load					1075		
Torques: Oz.Ft.	Breakdown					59.8		
	Locked Rotor					12.5		
	Pull-Up							
	Rated Load					48.8		
	Service Factor					1.0		
Watts:	Rated Load					732		
Temperature Rise:	@ Rated Load							
Thermal Protector:	Trip Temp (°C)					140~150		
Winding Material:	Start (Auxiliary)					Copper		
	Run (Main)					Copper		
Capacitor:	Run (MFD / Volts)	10.0 MFD 370V						
	No. of Run Capacitors	1						

MEDIUM-HIGH SPEED

HP:	1/2							
Volts:	460	115	208	230	277	460	100	200
HZ:	60	60	60	60	60	60	50	50
Efficiency:	@ Rated Load							
Power Factor:	@ Rated Load							
Amps:	@ No Load							
	@ Rated Load							
	@ Locked Rotor							
Torques: Oz.Ft.	Breakdown							
	Locked Rotor							
	Pull-Up							
	Rated Load							
Watts:	Rated Load							
Temperature Rise:	@ Rated Load							

 DRAWING NO. PAGE 1 REV.
 3LU98BJ -

3LU98BJ

REV.

-

SHADED-POLE & PSC MOTOR PERFORMANCE

MEDIUM-LOW SPEED

HP:	1/2							
Volts:	460	115	208	230	277	460	100	200
HZ:	60	60	60	60	60	60	50	50
Efficiency:	@ Rated Load							
Power Factor:	@ Rated Load							
Amps:	@ No Load							
	@ Rated Load							
Torques: Oz.Ft.	Breakdown							
	Locked Rotor							
	Pull-Up							
	Rated Load							
Watts:	Rated Load							
Temperature Rise:	@ Rated Load							
Watts:	Rated Load							
Temperature Rise:	@ Rated Load							
Thermal Protector:	Trip Temp (°C)							
Winding Material:	Start (Auxiliary)							
	Run (Main)							

LOW SPEED

HP:	1/2							
Volts:	460	120	208	230	277	460	100	200
HZ:	60	60	60	60	60	60	50	50
Efficiency:	@ Rated Load							
Power Factor:	@ Rated Load							
Amps:	@ No Load							
	@ Rated Load							
Torques: Oz.Ft.	Breakdown							
	Locked Rotor							
	Pull-Up							
	Rated Load							
Watts:	Rated Load							
Temperature Rise:	@ Rated Load							

Notes:

DRAWING NO.	PAGE	REV.
3LU98BJ	-	-

Dayton Electric Mfg. Co. Lake Forest, IL 60045 USA

Performance Data



3LU98BJ

REV.

-

Dayton Manufacturing Company

Motor Description

Model: 3LU98BJ
Motor ID: 1 OF 1
Poles: 6
Volts: 460
Frequency: 60
HP: 1/2
Speed: 1115
Phase: 1
Protector:

Test Conditions

Test Type: Run
Test Number: 2
Poles: 6
Volts: 460
Hz: 60
Rotation:
Special Cond:
Speed Conn: M1
TestBoard: Amtps Performance Fixture #1
Run Cap: 10
Start Cap: 0µfd
Environment:
Tested: 2/3/2007 11:03:34 AM
Tested By: Clausner, Chris
Gear Ratio: 1:1
Bearing Friction: -0.32 Oz-Ft
Windage Torque: -1.12 Oz-Ft

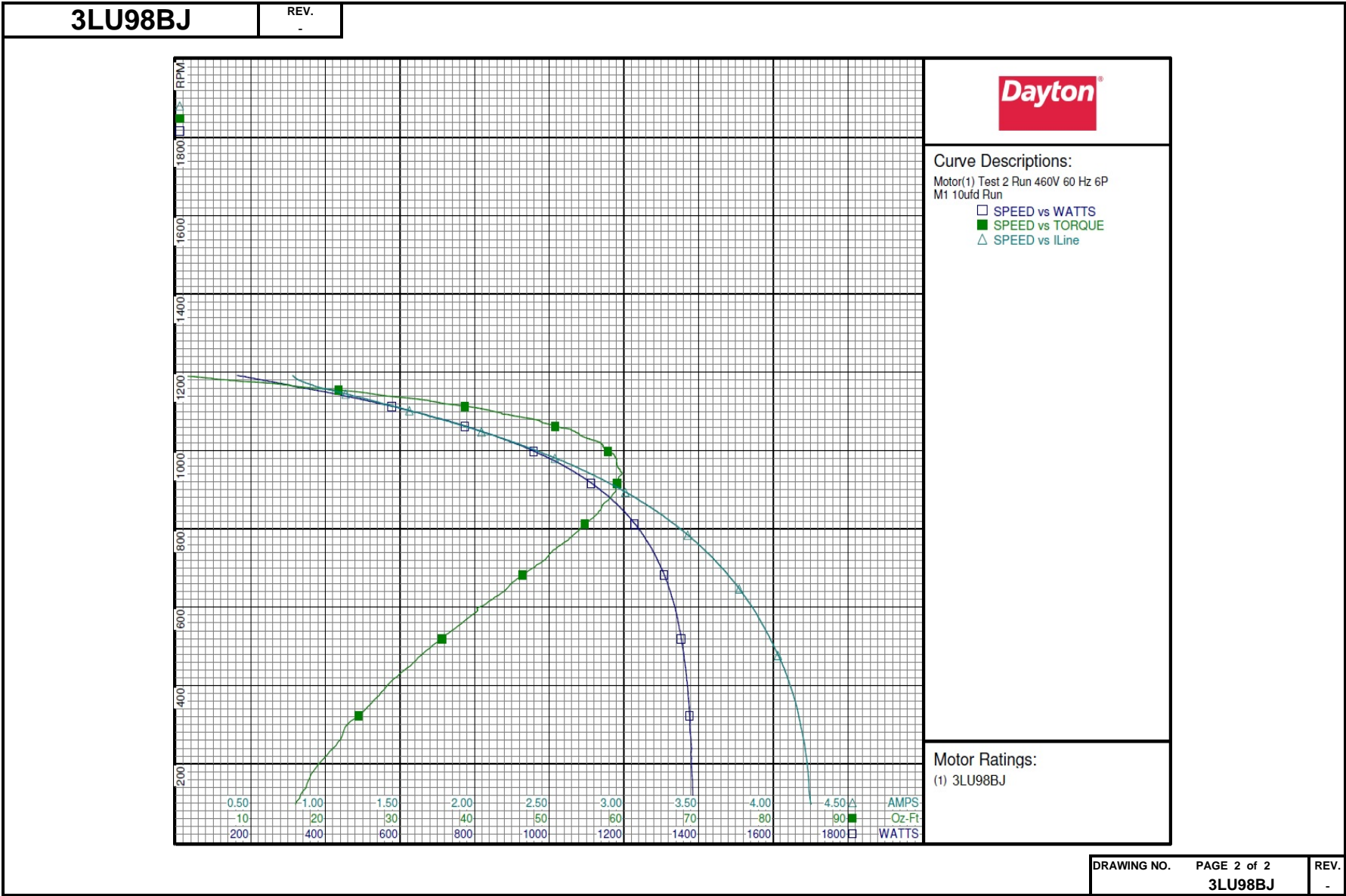
Special Points	Vline(V)	Vaux(V)	Vcap(V)	Iline(A)	Imain(A)	Iaux(A)	Watts	RPM	Tq(Oz-ft)	HP	Eff(%)	PF(%)	Cap
	460.0	312.7	370.9	0.782	1.844	1.430	163.6	1192	0.00	0.000	0.0	45.5	10.2
	460.0	315.1	362.7	0.826	1.716	1.401	235.7	1179	7.27	0.102	32.3	62.0	10.2
	460.0	317.5	353.8	0.912	1.637	1.368	302.5	1168	14.90	0.207	51.1	72.1	10.3
	460.0	320.3	343.5	1.054	1.600	1.327	382.5	1153	22.78	0.313	61.0	78.9	10.2
	460.0	321.0	335.3	1.190	1.605	1.298	452.2	1139	28.25	0.383	63.2	82.6	10.3
	460.0	319.9	326.7	1.336	1.641	1.269	522.1	1125	34.32	0.460	65.7	84.9	10.3
0.5 HP	460.0	319.1	321.3	1.431	1.677	1.251	566.0	1116	37.64	0.500	65.9	86.0	10.3
	460.0	318.3	318.0	1.490	1.706	1.239	591.9	1110	39.81	0.526	66.3	86.4	10.3
	460.0	316.2	309.6	1.647	1.802	1.212	659.8	1094	43.63	0.568	64.2	87.1	10.4
	460.0	313.9	301.0	1.814	1.929	1.184	728.9	1076	48.72	0.624	63.9	87.4	10.4
1075 RPM	460.0	313.7	300.4	1.824	1.937	1.183	732.4	1075	48.77	0.624	63.6	87.3	10.4
	460.0	311.2	292.8	1.980	2.072	1.158	794.2	1057	52.10	0.656	61.6	87.2	10.5
	460.0	308.4	285.0	2.147	2.231	1.132	858.3	1036	54.45	0.672	58.4	86.9	10.5
	460.0	305.0	277.5	2.317	2.402	1.108	922.0	1013	57.23	0.690	55.9	86.5	10.6
	460.0	301.2	270.6	2.486	2.583	1.084	980.9	989	58.66	0.691	52.5	85.8	10.6
	460.0	297.0	264.1	2.655	2.771	1.061	1035.8	962	59.08	0.677	48.8	84.8	10.7
BDT OZ-FT	460.0	294.1	260.0	2.773	2.906	1.047	1073.7	941	59.78	0.670	46.5	84.2	10.7
	460.0	293.1	258.3	2.818	2.961	1.042	1089.3	933	59.30	0.658	45.1	84.0	10.7
	460.0	288.4	253.4	2.979	3.150	1.024	1135.0	901	58.90	0.632	41.5	82.8	10.7
	460.0	283.5	249.4	3.130	3.332	1.009	1177.1	866	57.39	0.592	37.5	81.8	10.7
	460.0	278.6	246.1	3.276	3.511	0.995	1214.9	829	55.90	0.552	33.9	80.6	10.7
	460.0	273.5	243.5	3.415	3.684	0.985	1247.8	788	53.47	0.502	30.0	79.4	10.7
	460.0	268.4	241.8	3.543	3.845	0.976	1276.3	745	50.49	0.448	26.2	78.3	10.7
	460.0	263.5	240.7	3.662	3.998	0.971	1301.0	698	47.62	0.396	22.7	77.2	10.7
	460.0	258.4	240.2	3.772	4.142	0.968	1321.4	647	44.28	0.341	19.2	76.2	10.7
	460.0	253.3	240.1	3.873	4.276	0.964	1338.5	592	40.42	0.285	15.9	75.1	10.7
	460.0	248.6	240.2	3.961	4.395	0.962	1351.3	533	36.47	0.231	12.8	74.2	10.6
	460.0	243.8	241.0	4.041	4.505	0.962	1361.3	471	32.39	0.181	9.9	73.2	10.6
	460.0	238.9	242.6	4.110	4.603	0.963	1369.8	403	28.41	0.136	7.4	72.4	10.5
	460.0	233.8	244.5	4.167	4.685	0.962	1375.6	331	24.95	0.098	5.3	71.8	10.4
	460.0	229.4	246.1	4.207	4.748	0.964	1379.7	255	21.68	0.066	3.6	71.3	10.4
	460.0	225.4	248.1	4.234	4.797	0.972	1382.4	172	18.06	0.037	2.0	71.0	10.4

DRAWING NO. PAGE 1 of 2
3LU98BJ

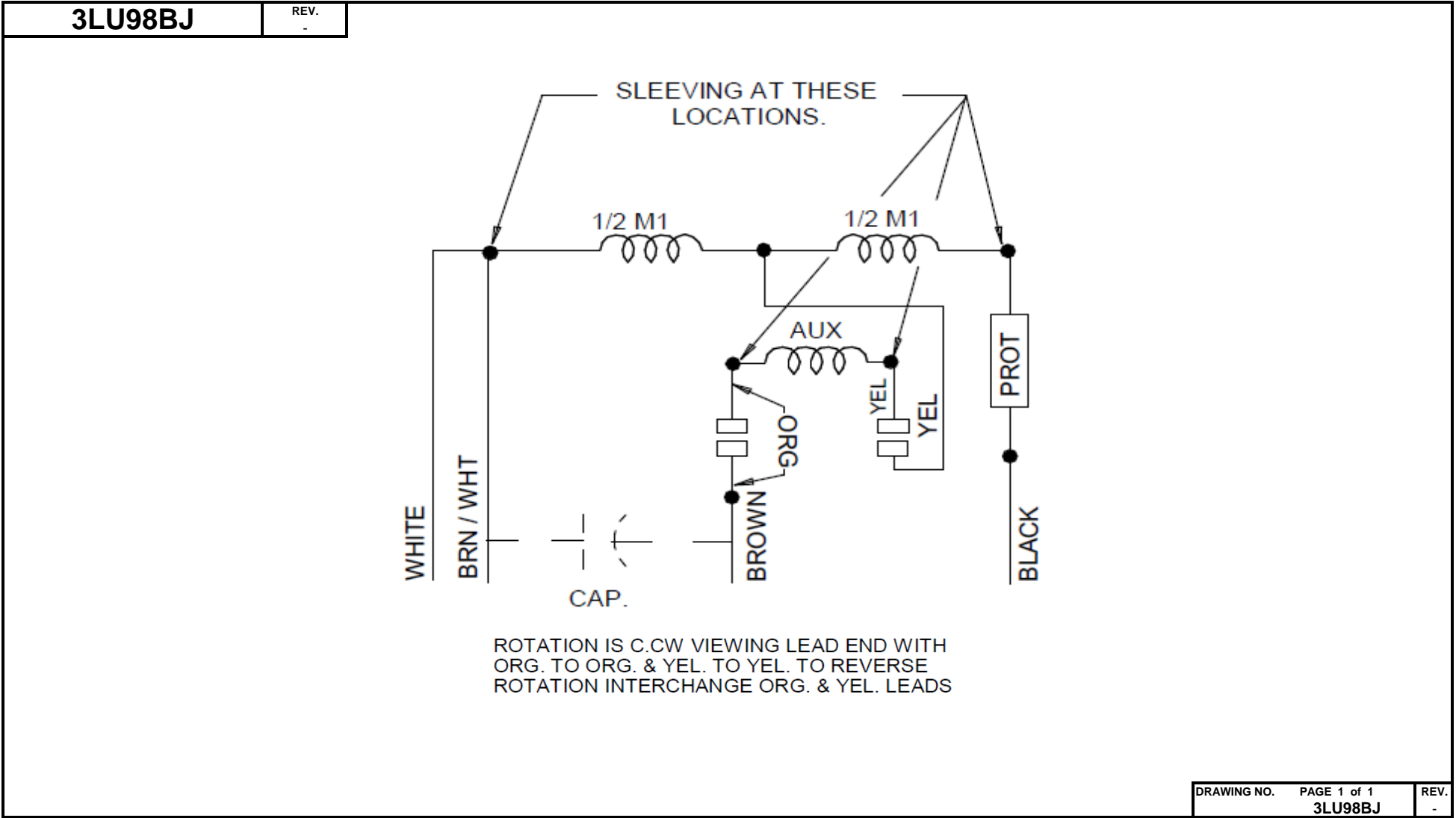
REV.
-

Dayton Electric Mfg. Co. Lake Forest, IL 60045 USA

Performance Data



Wiring Diagram



Dayton Electric Mfg. Co. Lake Forest, IL 60045 USA

Dayton®

CONDENSER FAN MOTOR

HP: 1/2
VOLTS: 460
AMPS: 1.5
RPM: 1075
DUTY: CONT
SF: 1.0
KVA CODE:
ENCL: TEAO
THERMALLY PROTECTED: AUTO

MFG. NO. PROT. CODE: 7A010

MTR REF: K55HXTDP-2346

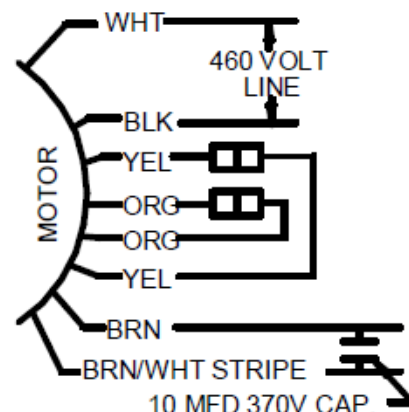
BAR CODE

Part
No 3LU98BJ

PH: 1
HZ: 60
FR: 48YZ
INS CL: B
AMB: 60 °C
SFA:

**Disconnect Power Before Making Any
Electrical Connections or Changes**

TO REVERSE ROTATION
INTERCHANGE ORG
AND YEL LEADS



E37403



258501

Mfd for Dayton Electric Mfg. Co., Lake Forest, IL 60045 USA

Made In China