

Dimensional Drawing

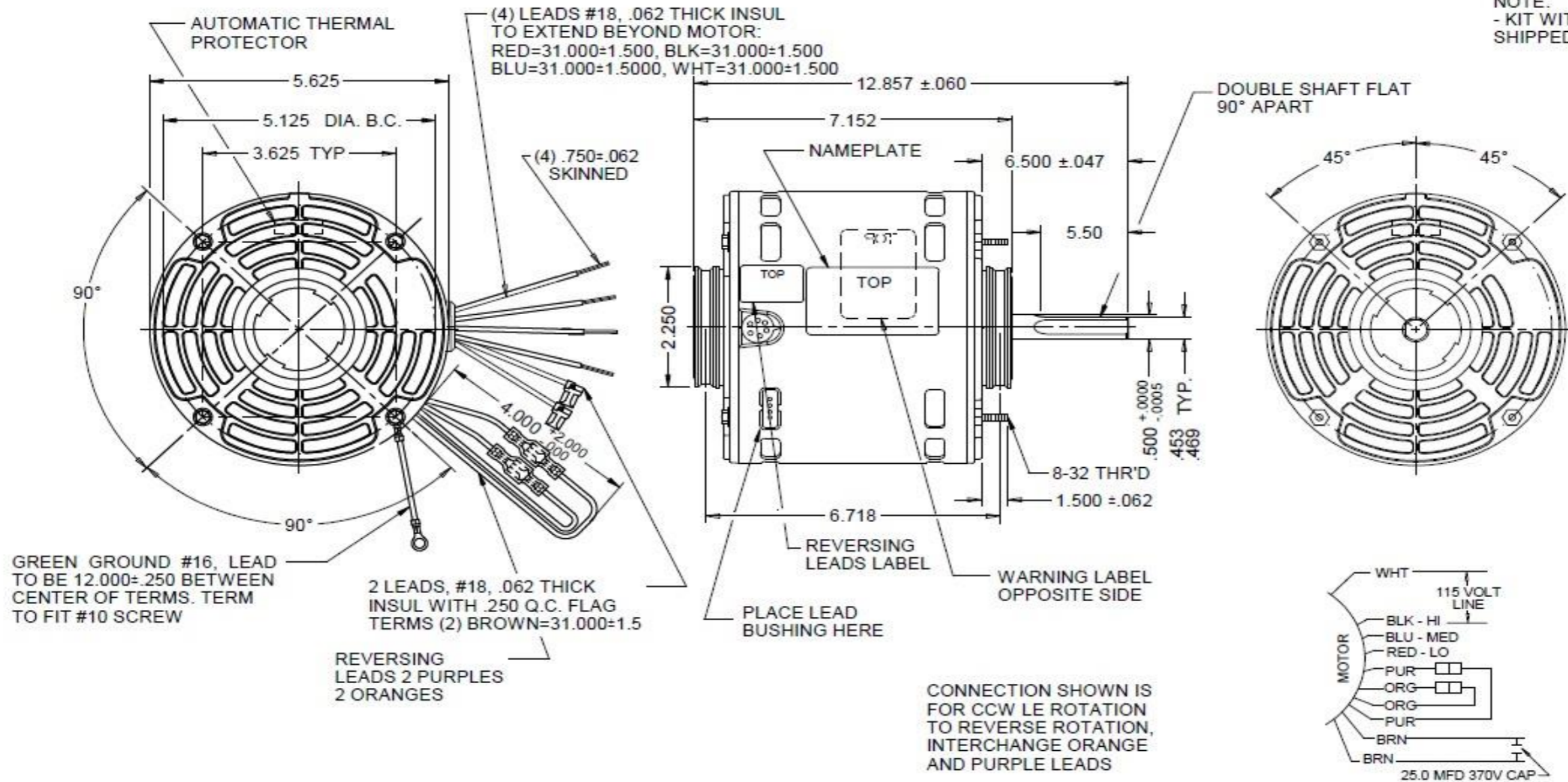


3LU89BG

REV.

MODEL	REF	CUSTOMER	HP	VOLTS	AMPS	HZ	RPM	ROTATION	CUSTOMER PT. NO.	DESCRIPTION / REMARKS
K55HXKDN-2448		GRAINGER	1.0	115	10.0	60	1625/3 SPD	CCW LE REV	3LU89BG	48YZ, OAO, DDBM, BALL BRG

NOTE:
- KIT WITH 2 1/2 RING
SHIPPED IN CARTON



CONNECTION SHOWN IS FOR CCW LE ROTATION TO REVERSE ROTATION, INTERCHANGE ORANGE AND PURPLE LEADS

DRAWING NO.	PAGE 1 of 1	REV.
3LU89BG		-

Dayton Electric Mfg. Co. Lake Forest, IL 60045 USA

Performance Data



3LU89BG

REV.
-

MOTOR PERFORMANCE

HP:	1HP						
Poles:	4P						
No. of Speeds:	3	Low	Meduim	High			
Volts:	115	115	115	115			
HZ:	60	60	60	60			
Service Factor:	1						
Efficiency:	@ Rated Load						
Power Factor:	@ Rated Load						
Amps:	@ No Load						
	@ Rated Load	4.78	7.4	10			
	@ Service Factor	4.78	7.4	10			
	@ Locked Rotor	12.48	17.6	28.6			
RPM:	@ Rated Load	1638	1608	1640			
Ambient (°C):							
Altitude (FASL):							
Torques:	Breakdown	34.1	48.6	76.6			
	Locked Rotor	11.57	13.05	19.73			
	Pull-Up	5.85	13.1	19.7			
	Rated Load	25.64	39.2	53.8			
	Service Factor	25.64	39.2	53.8			
Watts:	Rated Load	543.9	831	1127			
KVA Code:							
Temperature Rise:	@ Rated Load						
	@ Service Factor						
Thermal Protector:	Trip Temp (°C)						
Winding Material:	Start (Auxiliary)				CU		
	Run (Main)				CU		
Capacitor(s):	Start (MFD / Volts)						
	No. of Start Capacitors				N/A		
	Run (MFD / Volts)						
	No. of Run Capacitors				25 mFd, 370V		
HP:							
Poles:							
Volts:							
HZ:							
Efficiency:	@ Rated Load						
Power Factor:	@ Rated Load						
Amps:	@ No Load						
	@ Rated Load						
	@ Service Factor						
	@ Locked Rotor						
Torques:	@ Rated Load						
	Locked Rotor						
	Pull-Up						
	Rated Load						
	Service Factor						
Watts:	@ Rated Load						
Temperature Rise:	@ Rated Load						
	@ Service Factor						

DRAWING NO. PAGE 1 of 1 REV.
3LU89BG -

Dayton Electric Mfg. Co. Lake Forest, IL 60045 USA

3LU89BG

REV.

-

Dayton Manufacturing Company

Motor Description

Model: K055KDN2448 3LU89BG
 Motor ID:
 Poles: 4
 Volts: 115
 Frequency: 60
 HP: 1
 Speed: 1625
 Phase: 1
 Protector: 7AM036-A5

Test Conditions

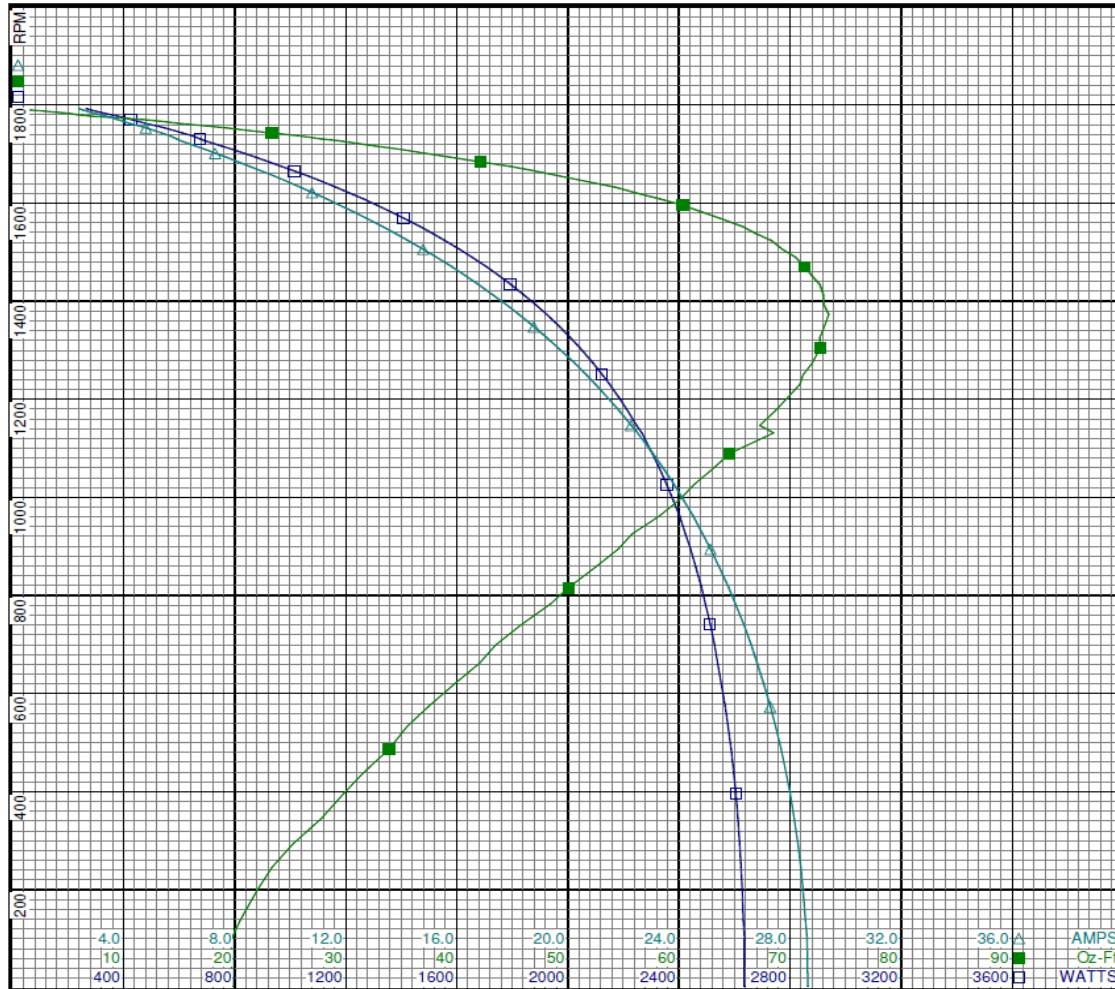
Test Type: Start
 Test Number: 1
 Poles: 4
 Volts: 115
 Hz: 60
 Rotation: CCW
 Special Cond:
 Speed Conn: M1
 TestBoard: CMD InLine Three Phase #2 Fixture #1
 Run Cap: 25
 Start Cap: 0ufd
 Environment: 25.7 Deg C 47 % RH 962 hPa
 Tested: 8/3/2016 4:57:21 PM
 Tested By: Bribiesca, Griselda
 Gear Ratio: 1:1
 Bearing Friction: -0.40 Oz-Ft
 Windage Torque: -17.07 Oz-Ft

Special Points	Vline (V)	Vaux (V)	Vcap (V)	Iline (A)	Watts	RPM	Tq(Oz-ft)	HP	Eff (%)	PF (%)
	115.0	38.2	164.9	28.64	2636	3	19.73	0.001	0.0	80.0
PUT OZ-FT	115.0	41.1	162.3	28.62	2637	100	19.70	0.023	0.7	80.1
	115.0	45.2	159.2	28.47	2628	198	22.01	0.052	1.5	80.3
	115.0	52.6	156.2	28.15	2612	345	27.81	0.114	3.3	80.7
	115.0	61.1	154.4	27.68	2588	487	33.91	0.197	5.7	81.3
	115.0	70.0	152.3	27.05	2552	619	39.77	0.293	8.6	82.0
	115.0	79.8	151.3	26.33	2512	742	45.88	0.405	12.0	83.0
	115.0	91.0	152.2	25.44	2460	858	52.50	0.536	16.3	84.1
	115.0	102.3	154.8	24.51	2402	961	58.24	0.666	20.7	85.2
	115.0	114.8	159.1	23.42	2328	1060	63.17	0.797	25.6	86.5
	115.0	126.8	164.7	22.28	2247	1146	67.27	0.918	30.5	87.7
	115.0	140.2	172.5	20.99	2150	1230	70.87	1.038	36.0	89.1
	115.0	153.8	181.6	19.63	2042	1305	72.74	1.130	41.3	90.4
	115.0	167.4	192.1	18.23	1924	1373	73.48	1.201	46.6	91.7
	115.0	181.0	203.7	16.77	1794	1434	72.66	1.240	51.6	93.0
	115.0	194.8	216.3	15.26	1654	1489	70.47	1.249	56.3	94.3
	115.0	208.0	229.1	13.80	1514	1537	66.94	1.225	60.4	95.4
	115.0	221.2	242.7	12.28	1362	1582	62.01	1.168	64.0	96.5
	115.0	234.1	256.6	10.79	1208	1621	55.96	1.080	66.7	97.4
	115.0	245.8	269.4	9.43	1065	1654	49.28	0.971	68.0	98.2
	115.0	257.1	282.3	8.12	923	1683	42.14	0.845	68.3	98.8
	115.0	267.9	294.8	6.93	791	1709	34.93	0.711	67.0	99.3
	115.0	279.3	307.8	5.91	676	1730	27.83	0.573	63.3	99.4
	115.0	289.1	319.9	5.11	583	1747	21.34	0.444	56.8	99.2
	115.0	295.4	330.3	4.20	477	1762	14.93	0.313	48.9	98.9
	115.0	298.8	336.1	3.57	405	1773	9.25	0.195	36.0	98.6
	115.0	300.9	340.5	2.94	331	1783	5.02	0.106	24.0	97.8
	115.0	302.7	343.6	2.54	283	1789	1.67	0.036	9.4	97.1
	115.0	303.4	344.9	2.37	264	1792	0.00	0.000	0.0	96.9

DRAWING NO. PAGE 1 of 12 REV.
3LU89BG -

3LU89BG

REV.
-



Curve Descriptions:

Motor(1) Test 1 Start 115V 60 Hz 4P
M1 CCW 25ufd Run
 □ SPEED vs WATTS
 ■ SPEED vs TORQUE
 △ SPEED vs ILine

Motor Ratings:

(1) K055KDN2448 3LU89BG

DRAWING NO. PAGE 2 of 12 REV.
3LU89BG -

3LU89BG		REV. -								
Dayton Manufacturing Company										
Motor Description				Test Conditions						
Model:	K055KDN2448 3LU89BG		Test Type:	Run	Run Cap:	25				
Motor ID:			Test Number:	9	Start Cap:	0µfd				
Poles:	4		Poles:	4	Environment:	25.7 Deg C 47 % RH 962 hPa				
Volts:	115		Volts:	115	Tested:	8/3/2016 4:59:51 PM				
Frequency:	60		HZ:	60	Tested By:	Bribiesca, Griselda				
HP:	1		Rotation:	CCW	Gear Ratio:	1:1				
Speed:	1625		Special Cond:		Bearing Friction:	-0.39 Oz-Ft				
Phase:	1		Speed Conn:	M1	Windage Torque:	-2.29 Oz-Ft				
Protector:	7AM036-A5		TestBoard:	CMD InLine Three Phase #2 Fixture #1						
Special Points	Vline (V)	Vaux (V)	Vcap (V)	Iline (A)	Watts	RPM	Tq (Oz-ft)	HP	Eff (%)	PF (%)
	115.0	303.7	345.1	2.33	259	1790	0.00	0.000	0.0	96.8
	115.0	302.5	342.9	2.66	297	1785	3.38	0.072	18.0	97.2
	115.0	300.9	339.7	3.11	349	1777	7.01	0.148	31.7	97.6
	115.0	300.0	338.0	3.32	375	1767	8.62	0.181	36.0	98.4
	115.0	295.9	330.5	4.18	476	1753	15.35	0.320	50.2	99.0
	115.0	287.3	316.9	5.33	608	1737	24.34	0.503	61.7	99.3
	115.0	272.9	299.8	6.53	747	1716	33.22	0.679	67.8	99.4
	115.0	261.9	287.2	7.66	873	1693	40.34	0.813	69.5	99.1
	115.0	251.3	274.9	8.88	1006	1665	48.00	0.952	70.6	98.5
53.8 OZ-FT	115.0	241.9	264.2	10.00	1127	1640	53.80	1.050	69.5	98.0
	115.0	239.6	261.6	10.27	1156	1633	55.30	1.075	69.4	97.8
	115.0	227.2	248.1	11.73	1308	1597	61.77	1.174	66.9	97.0
	115.0	211.4	231.8	13.53	1489	1547	67.44	1.242	62.2	95.7
	115.0	200.4	220.6	14.82	1616	1506	71.94	1.290	59.5	94.8
	115.0	186.5	207.6	16.35	1759	1453	75.00	1.297	55.0	93.6
	115.0	173.4	196.1	17.76	1886	1396	76.46	1.271	50.3	92.3
BDT OZ-FT	115.0	159.3	184.9	19.22	2011	1330	76.55	1.212	45.0	91.0
	115.0	159.3	184.9	19.22	2011	1330	76.55	1.212	45.0	91.0
	115.0	146.0	175.4	20.54	2118	1259	75.11	1.125	39.6	89.6
	115.0	139.1	171.3	21.10	2160	1218	72.26	1.048	36.2	89.0
	115.0	119.9	161.0	22.90	2295	1090	68.52	0.889	28.9	87.1
	115.0	107.7	156.2	23.95	2367	995	64.20	0.760	24.0	86.0
	115.0	96.2	153.1	24.87	2427	892	59.04	0.627	19.3	84.9
	115.0	84.8	151.6	25.70	2477	778	52.81	0.489	14.7	83.8
	115.0	74.7	151.9	26.36	2515	661	47.11	0.371	11.0	83.0
	115.0	65.8	153.7	26.90	2546	533	41.85	0.266	7.8	82.3
	115.0	56.9	155.9	27.32	2569	392	35.15	0.164	4.8	81.8
	115.0	47.8	158.5	27.55	2579	225	27.14	0.073	2.1	81.4
	115.0	41.9	162.4	27.61	2584	91	25.85	0.028	0.8	81.4

Performance Data



3LU89BG

REV.
-



Curve Descriptions:
 Motor(1) Test 9 Run 115V 60 Hz 4P
 M1 CCW 25ufd Run
 □ SPEED vs TORQUE
 ■ SPEED vs WATTS
 △ SPEED vs ILine

Motor Ratings:
 (1) K055KDN2448 3LU89BG

4.0 8.0 12.0 16.0 20.0 24.0 28.0 32.0 36.0 A AMPS
 400 800 1200 1600 2000 2400 2800 3200 3600 WATTS
 10 20 30 40 50 60 70 80 90 Oz-Ft

DRAWING NO. PAGE 4 of 12 REV.
3LU89BG -



3LU89BG

REV.
-

Dayton Manufacturing Company

Motor Description

Model: K055KDN2448 3LU89BG
 Motor ID:
 Poles: 4
 Volts: 115
 Frequency: 60
 HP: 1
 Speed: 1625
 Phase: 1
 Protector: 7AM036-A5

Test Conditions

Test Type: Start
 Test Number: 2
 Poles: 4
 Volts: 115
 Hz: 60
 Rotation: CCW
 Special Cond:
 Speed Conn: M2
 TestBoard: CMD InLine Three Phase #2 Fixture #1
 Run Cap: 25
 Start Cap: 0µfd
 Environment: 25.7 Deg C 47 % RH 962 hPa
 Tested: 8/3/2016 5:03:07 PM
 Tested By: Bribiesca, Griselda
 Gear Ratio: 1:1
 Bearing Friction: -0.31 Oz-Ft
 Windage Torque: -15.28 Oz-Ft

Special Points PUT OZ-FT	Vline (V)	Vaux (V)	Vcap (V)	Iline (A)	Watts	RPM	Tq (Oz-ft)	HP	Eff (%)	PF (%)
	115.0	37.2	145.4	17.588	1712.9	33	13.05	0.005	0.2	84.7
	115.0	37.2	145.4	17.588	1712.9	33	13.05	0.005	0.2	84.7
	115.0	42.0	141.6	17.434	1704.1	195	15.87	0.037	1.6	85.0
	115.0	48.0	139.4	17.180	1686.6	350	19.24	0.080	3.5	85.4
	115.0	54.6	137.8	16.839	1658.4	490	22.72	0.133	6.0	85.6
	115.0	60.6	136.2	16.516	1630.1	622	23.81	0.176	8.1	85.8
	115.0	67.4	135.4	16.186	1612.6	742	25.61	0.226	10.5	86.6
	115.0	76.4	136.1	15.689	1582.4	858	30.23	0.309	14.6	87.7
	115.0	85.5	137.8	15.121	1542.3	962	33.94	0.389	18.8	88.7
	115.0	95.3	140.8	14.472	1492.7	1059	37.30	0.470	23.5	89.7
	115.0	105.6	145.1	13.761	1436.3	1150	40.68	0.557	28.9	90.8
	115.0	116.3	150.6	12.993	1371.8	1232	42.86	0.629	34.2	91.8
	115.0	127.2	157.2	12.201	1302.9	1305	44.07	0.685	39.2	92.9
	115.0	138.8	165.2	11.337	1224.8	1374	44.99	0.736	44.8	93.9
	115.0	150.0	173.9	10.476	1143.9	1434	44.65	0.762	49.7	95.0
	115.0	161.7	183.8	9.567	1055.6	1490	43.52	0.772	54.5	95.9
	115.0	173.6	194.5	8.645	963.5	1540	41.49	0.760	58.9	96.9
	115.0	185.0	205.3	7.743	870.5	1583	38.87	0.733	62.8	97.8
	115.0	196.3	216.5	6.863	777.5	1622	35.36	0.683	65.5	98.5
	115.0	207.4	227.9	6.007	684.9	1656	30.94	0.610	66.4	99.2
	115.0	218.1	238.9	5.253	601.8	1684	26.57	0.533	66.1	99.6
	115.0	229.8	250.9	4.555	522.4	1710	22.38	0.455	65.0	99.7
	115.0	241.1	262.8	4.012	457.3	1731	17.78	0.366	59.7	99.1
	115.0	251.2	275.2	3.458	390.6	1748	13.57	0.282	53.9	98.2
	115.0	257.1	284.0	2.954	331.2	1762	8.73	0.183	41.2	97.5
	115.0	260.2	289.0	2.558	283.8	1774	6.12	0.129	34.0	96.5
	115.0	263.3	294.0	2.120	231.3	1783	2.32	0.049	15.9	94.8
	115.0	264.9	296.4	1.901	204.6	1789	0.59	0.013	4.6	93.6
	115.0	265.2	296.9	1.859	199.7	1791	0.30	0.006	2.4	93.4

DRAWING NO. PAGE 5 of 12
3LU89BG

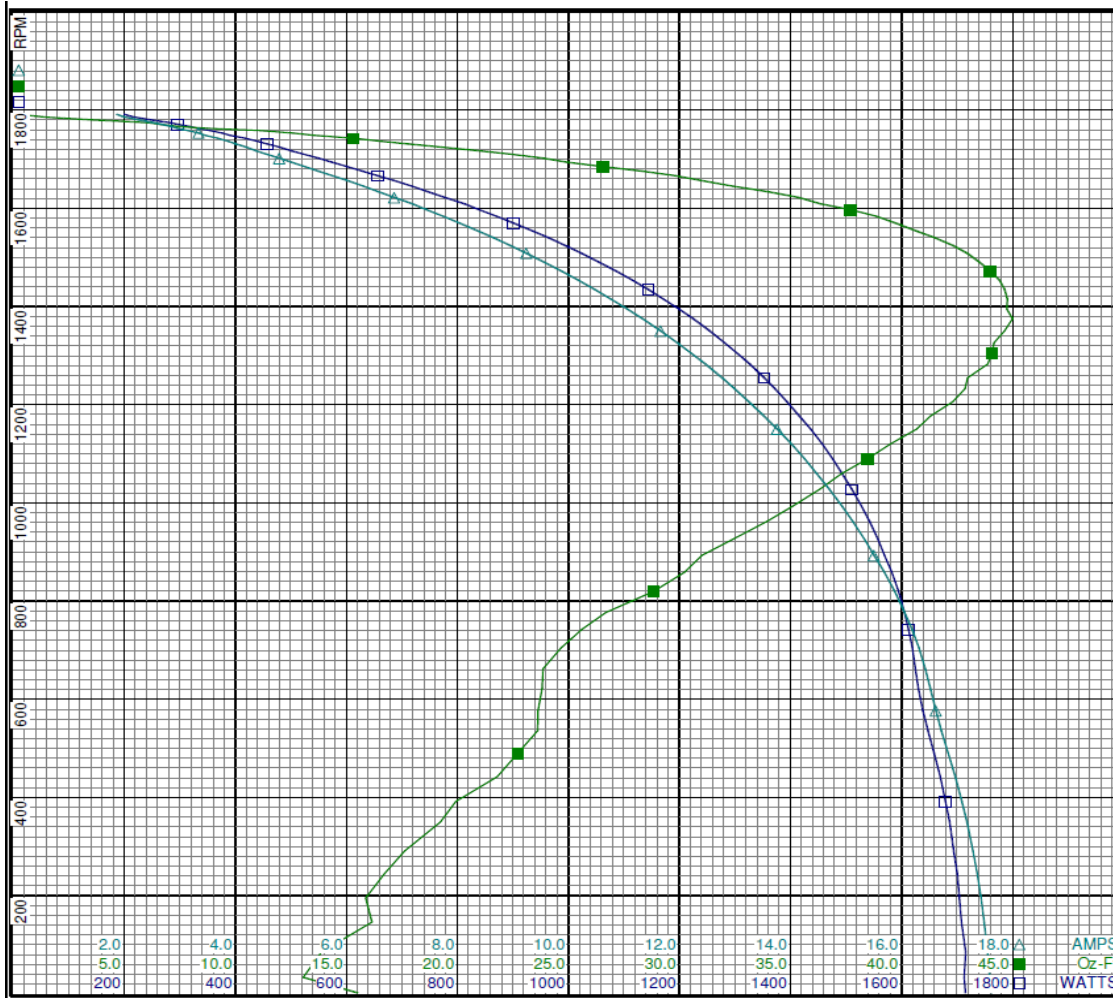
REV.
-

Performance Data



3LU89BG

REV.
-



Curve Descriptions:
 Motor(1) Test 2 Start 115V 60 Hz 4P
 M2 CCW 25ufd Run
 □ SPEED vs WATTS
 ■ SPEED vs TORQUE
 △ SPEED vs ILine

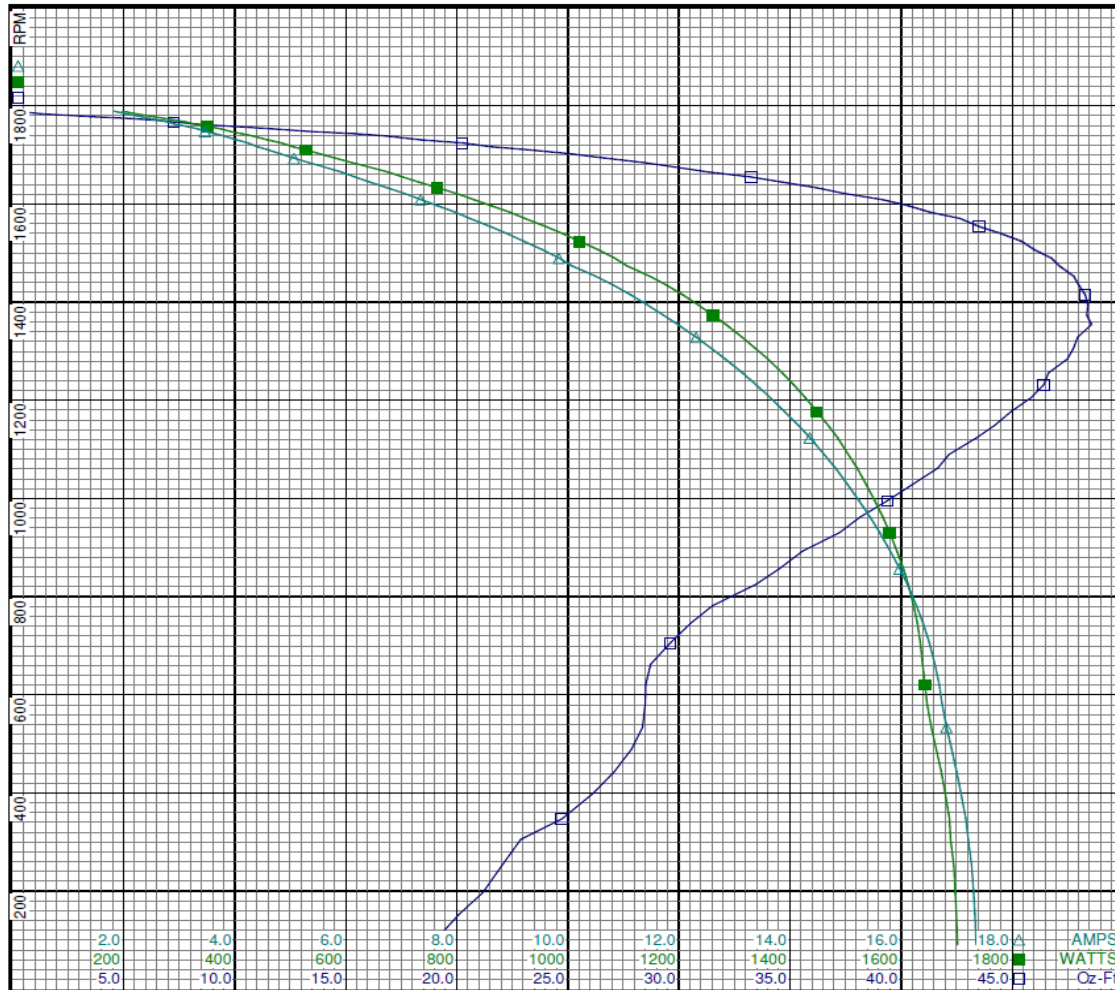
Motor Ratings:
 (1) K055KDN2448 3LU89BG

DRAWING NO. PAGE 6 of 12 REV.
3LU89BG -

3LU89BG		REV. -								
Dayton Manufacturing Company										
Motor Description				Test Conditions						
Model:	K055KDN2448 3LU89BG		Test Type:	Run	Run Cap:	25				
Motor ID:			Test Number:	10	Start Cap:	0µfd				
Poles:	4		Poles:	4	Environment:	25.7 Deg C 47 % RH 962 hPa				
Volts:	115		Volts:	115	Tested:	8/3/2016 5:09:33 PM				
Frequency:	60		Hertz:	60	Tested By:	Bribiesca, Griselda				
HP:	1		Rotation:	CCW	Gear Ratio:	1:1				
Speed:	1625		Special Cond:		Bearing Friction:	-0.35 Oz-Ft				
Phase:	1		Speed Conn:	M2	Windage Torque:	-14.47 Oz-Ft				
Protector:	7AM036-A5		TestBoard:	CMD InLine Three Phase #2 Fixture #1						
Special Points	Vline (V)	Vaux (V)	Vcap (V)	Iline (A)	Watts	RPM	Tq (Oz-ft)	HP	Eff (%)	PF (%)
	115.0	264.6	296.9	1.823	197.1	1789	0.00	0.000	0.0	94.0
	115.0	263.4	294.7	2.062	224.6	1783	1.47	0.031	10.4	94.7
	115.0	260.6	290.0	2.471	273.3	1774	5.27	0.111	30.4	96.2
	115.0	256.9	284.1	2.911	325.7	1762	8.32	0.174	40.0	97.3
	115.0	251.6	276.0	3.469	391.1	1748	13.29	0.276	52.7	98.1
	115.0	241.5	263.1	4.032	459.0	1730	18.39	0.379	61.5	99.0
	115.0	229.1	250.2	4.607	528.5	1710	23.30	0.474	66.9	99.7
	115.0	217.6	238.4	5.332	610.6	1684	28.42	0.570	69.6	99.6
	115.0	206.8	226.9	6.167	703.0	1654	33.25	0.655	69.5	99.1
	115.0	195.9	215.5	7.056	799.0	1621	37.44	0.722	67.5	98.5
0.75 HP	115.0	192.1	211.7	7.359	831.1	1608	39.18	0.750	67.3	98.2
	115.0	184.7	204.3	7.976	895.8	1582	41.32	0.778	64.8	97.7
	115.0	173.4	193.5	8.897	990.3	1539	44.49	0.815	61.4	96.8
45.87 OZ-FT	115.0	166.4	187.1	9.464	1046.8	1510	45.87	0.825	58.8	96.2
	115.0	161.8	183.0	9.842	1084.0	1489	46.76	0.829	57.1	95.8
	115.0	149.5	172.6	10.823	1178.2	1434	48.00	0.819	51.9	94.7
	115.0	137.9	163.7	11.724	1261.3	1373	48.36	0.790	46.7	93.5
BDT OZ-FT	115.0	134.7	161.4	11.976	1284.2	1354	48.57	0.783	45.5	93.2
	115.0	126.6	155.9	12.588	1338.1	1305	47.75	0.742	41.4	92.4
	115.0	115.8	149.4	13.385	1406.2	1232	46.43	0.681	36.1	91.4
	115.0	105.0	144.0	14.149	1468.7	1148	44.21	0.604	30.7	90.3
	115.0	95.0	140.0	14.818	1520.8	1061	41.65	0.526	25.8	89.2
	115.0	85.0	137.1	15.443	1567.3	961	38.15	0.437	20.8	88.2
	115.0	75.9	135.5	15.974	1604.2	856	34.52	0.352	16.4	87.3
	115.0	67.4	135.0	16.395	1629.2	745	30.53	0.271	12.4	86.4
	115.0	60.0	135.8	16.686	1643.2	620	28.50	0.210	9.6	85.6
	115.0	54.4	137.6	16.910	1663.5	489	27.86	0.162	7.3	85.5
	115.0	48.1	139.2	17.163	1687.0	347	24.73	0.102	4.5	85.5
	115.0	42.0	141.6	17.305	1697.7	196	21.17	0.049	2.2	85.3

3LU89BG

REV.
-



Curve Descriptions:
 Motor(1) Test 10 Run 115V 60 Hz 4P
 M2 CCW 25ufd Run
 □ SPEED vs TORQUE
 ■ SPEED vs WATTS
 △ SPEED vs ILine

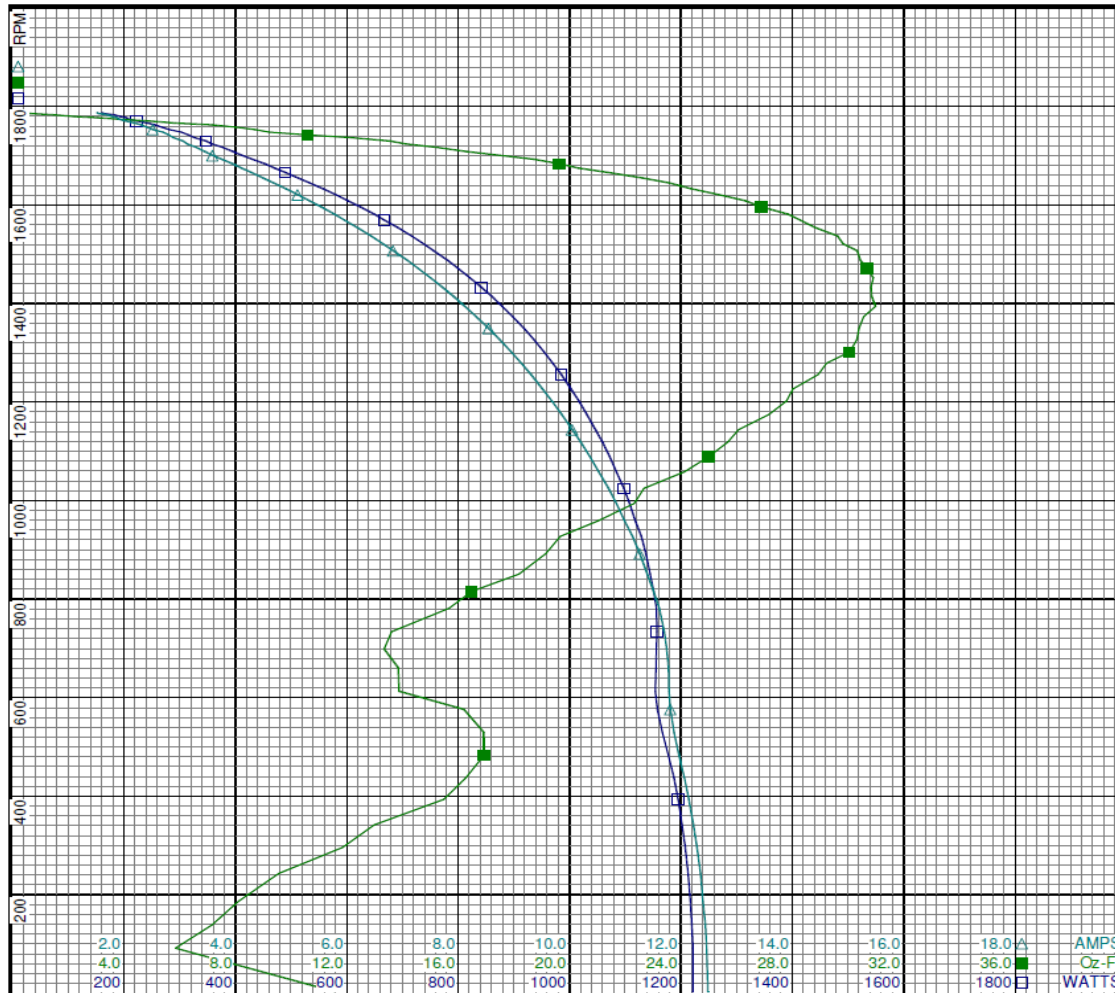
Motor Ratings:
 (1) K055KDN2448 3LU89BG

DRAWING NO. PAGE 8 of 12 REV.
3LU89BG -

3LU89BG		REV.								
		-								
Dayton Manufacturing Company										
Motor Description					Test Conditions					
Model:	K055KDN2448 3LU89BG		Test Type:	Start	Run Cap:	25				
Motor ID:			Test Number:	3	Start Cap:	0ufd				
Poles:	4		Poles:	4	Environment:	25.7 Deg C 47 % RH 962 hPa				
Volts:	115		Volts:	115	Tested:	8/3/2016 5:23:19 PM				
Frequency:	60		Hz:	60	Tested By:	Briebesca, Griselda				
HP:	1		Rotation:	CCW	Gear Ratio:	1:1				
Speed:	1625		Special Cond:		Bearing Friction:	-0.35 Oz-Ft				
Phase:	1		Speed Conn:	M3	Windage Torque:	-16.12 Oz-Ft				
Protector:	7AM036-A5		TestBoard:	CMD InLine Three Phase #2 Fixture #1						
Special Points	Vline (V)	Vaux (V)	Vcap (V)	Iline (A)	Watts	RPM	Tq (Oz-ft)	HP	Eff (%)	PF (%)
PUT OZ-FT	115.0	33.4	131.7	12.483	1221.3	3	11.57	0.000	0.0	85.1
	115.0	34.7	130.1	12.462	1221.5	91	5.85	0.006	0.4	85.2
	115.0	37.3	128.2	12.396	1216.9	186	8.11	0.018	1.1	85.4
	115.0	42.0	125.9	12.223	1202.0	341	12.98	0.053	3.3	85.5
	115.0	47.4	123.9	11.965	1177.3	483	16.94	0.097	6.2	85.6
	115.0	50.7	122.8	11.785	1153.8	613	13.88	0.101	6.5	85.1
	115.0	56.0	122.6	11.700	1157.0	733	13.60	0.119	7.7	86.0
	115.0	63.6	123.1	11.395	1144.7	850	18.18	0.184	12.0	87.4
	115.0	71.5	124.4	10.987	1118.0	958	21.03	0.240	16.0	88.5
	115.0	79.7	126.3	10.524	1084.0	1058	24.12	0.304	20.9	89.6
	115.0	87.9	129.2	10.047	1046.4	1144	26.07	0.355	25.3	90.6
	115.0	96.7	133.0	9.515	1002.5	1226	28.02	0.409	30.4	91.6
	115.0	105.9	137.8	8.951	953.9	1301	30.06	0.466	36.4	92.7
	115.0	115.9	144.0	8.326	898.0	1373	30.56	0.499	41.5	93.8
	115.0	125.6	150.8	7.719	841.6	1433	30.83	0.526	46.6	94.8
	115.0	135.5	158.5	7.091	781.3	1487	30.45	0.539	51.5	95.8
	115.0	145.8	167.0	6.433	716.2	1537	29.62	0.542	56.4	96.8
	115.0	156.1	176.2	5.779	649.4	1581	27.84	0.524	60.2	97.7
	115.0	166.5	186.0	5.120	580.0	1620	25.36	0.489	62.9	98.5
	115.0	176.5	195.8	4.495	512.6	1654	22.63	0.446	64.9	99.2
	115.0	186.0	205.1	3.948	452.4	1683	19.63	0.393	64.9	99.6
	115.0	196.6	215.5	3.448	395.4	1708	16.30	0.331	62.5	99.7
	115.0	208.3	226.9	3.059	347.4	1729	13.55	0.279	59.9	98.7
	115.0	217.6	237.9	2.696	302.7	1747	9.22	0.192	47.2	97.7
	115.0	224.3	247.2	2.305	255.9	1762	7.17	0.150	43.8	96.5
	115.0	228.7	253.8	1.922	209.3	1773	3.94	0.083	29.6	94.7
	115.0	230.6	257.2	1.687	181.9	1782	1.46	0.031	12.7	93.7
	115.0	232.1	259.5	1.512	159.8	1787	0.17	0.004	1.7	91.9

3LU89BG

REV.
-



Curve Descriptions:

Motor(1) Test 3 Start 115V 60 Hz 4P
M3 CCW 25ufd Run

- SPEED vs WATTS
- SPEED vs TORQUE
- △ SPEED vs ILine

Motor Ratings:

(1) K055KDN2448 3LU89BG

DRAWING NO. PAGE 10 of 12
3LU89BG

REV.
-

Performance Data



3LU89BG

REV.

-

Dayton Manufacturing Company

Motor Description

Model: K055KDN2448 3LU89BG
 Motor ID:
 Poles: 4
 Volts: 115
 Frequency: 60
 HP: 1
 Speed: 1625
 Phase: 1
 Protector: 7AM036-A5

Test Conditions

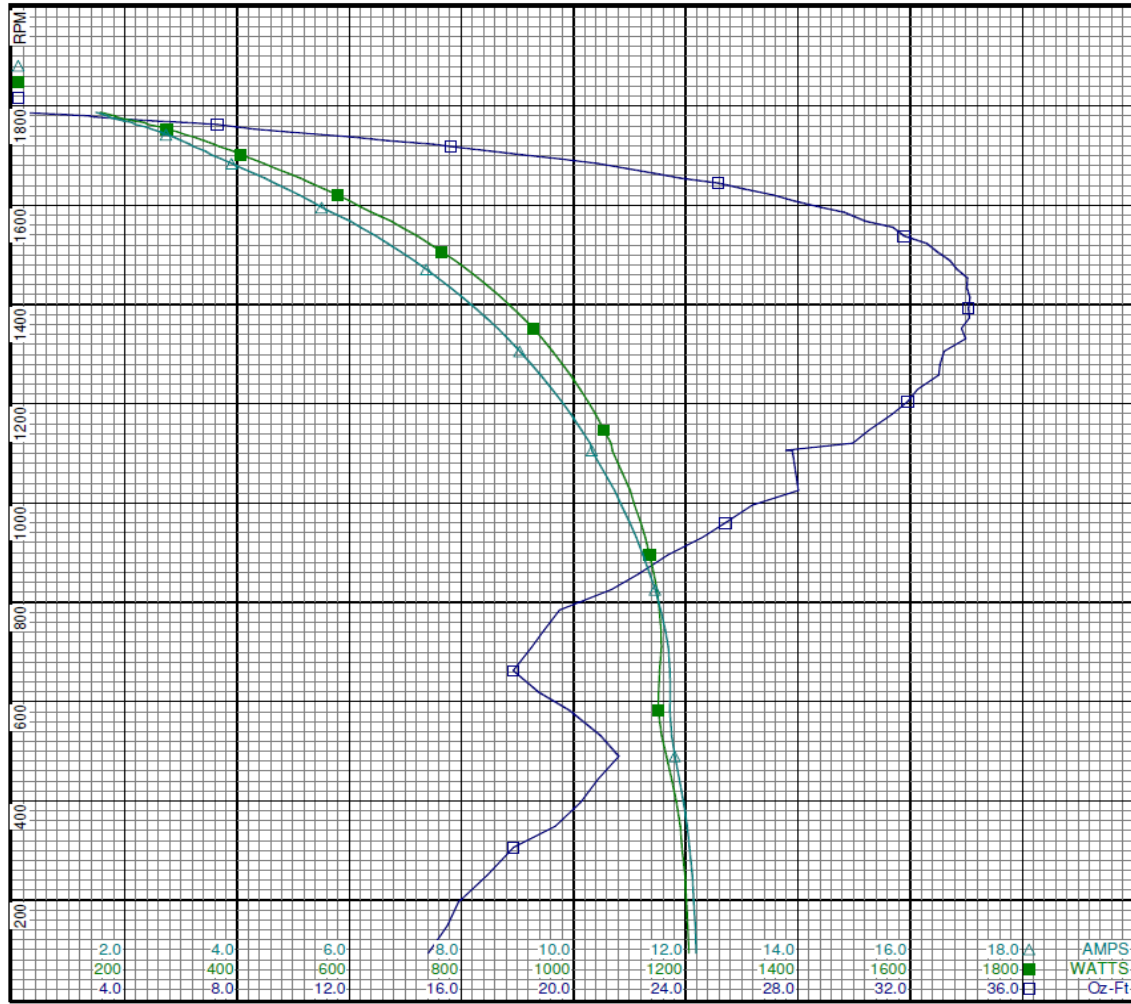
Test Type: Run
 Test Number: 11
 Poles: 4
 Volts: 115
 Hz: 60
 Rotation: CCW
 Special Cond:
 Speed Conn: M3
 TestBoard: CMD InLine Three Phase #2 Fixture #1
 Run Cap: 25
 Start Cap: 0µfd
 Environment: 25.7 Deg C 47 % RH 962 hPa
 Tested: 8/3/2016 5:25:29 PM
 Tested By: Bribiesca, Griselda
 Gear Ratio: 1:1
 Bearing Friction: -0.31 Oz-Ft
 Windage Torque: -1.72 Oz-Ft

Special Points	Vline (V)	Vaux (V)	Vcap (V)	Iline (A)	Watts	RPM	Tq(Oz-ft)	HP	Eff (%)	PF (%)
	115.0	232.4	259.8	1.483	155.3	1787	0.00	0.000	0.0	91.1
	115.0	230.2	256.7	1.689	182.3	1780	2.73	0.058	23.7	93.8
	115.0	228.1	252.8	1.976	215.7	1770	5.01	0.106	36.5	94.9
	115.0	223.6	245.8	2.366	262.4	1758	7.96	0.166	47.3	96.4
	115.0	216.7	236.5	2.737	307.5	1742	11.02	0.228	55.4	97.7
	115.0	206.8	224.9	3.153	358.5	1723	14.99	0.307	64.0	98.9
	115.0	195.4	213.8	3.539	405.8	1701	18.18	0.368	67.7	99.7
	115.0	184.6	203.1	4.093	468.6	1674	21.88	0.436	69.4	99.6
	115.0	174.9	193.5	4.667	531.8	1644	25.17	0.493	69.1	99.1
0.5 HP	115.0	173.1	191.7	4.780	543.9	1638	25.64	0.500	68.6	98.9
	115.0	164.9	183.7	5.314	601.2	1608	27.88	0.534	66.2	98.4
	115.0	154.2	173.6	6.021	674.9	1567	30.41	0.567	62.7	97.5
31.44 OZ-FT	115.0	150.8	170.5	6.237	697.0	1553	31.44	0.581	62.2	97.2
	115.0	144.2	164.6	6.686	742.4	1523	32.60	0.591	59.4	96.6
	115.0	133.7	155.9	7.374	809.8	1471	33.67	0.589	54.3	95.5
BDT OZ-FT	115.0	123.6	148.3	8.026	871.3	1414	34.13	0.574	49.2	94.4
	115.0	123.6	148.3	8.026	871.3	1414	34.13	0.574	49.2	94.4
	115.0	113.9	141.6	8.646	928.1	1352	33.83	0.544	43.8	93.3
	115.0	104.1	135.9	9.245	980.1	1280	33.07	0.504	38.3	92.2
	115.0	95.0	131.3	9.788	1025.7	1204	31.92	0.457	33.3	91.1
	115.0	86.2	127.7	10.294	1066.3	1120	29.95	0.399	27.9	90.1
	115.0	77.5	125.3	10.732	1100.6	1025	28.01	0.342	23.2	89.2
	115.0	70.0	123.7	11.115	1127.9	931	24.60	0.273	18.0	88.2
	115.0	62.6	122.9	11.454	1148.8	825	21.35	0.210	13.6	87.2
	115.0	55.4	122.5	11.688	1156.5	709	18.50	0.156	10.1	86.0
	115.0	50.2	122.9	11.715	1150.7	582	19.86	0.137	8.9	85.4
	115.0	46.2	124.3	11.884	1174.8	444	20.87	0.110	7.0	86.0
	115.0	41.3	126.4	12.066	1193.1	306	17.86	0.065	4.1	86.0
	115.0	36.9	128.9	12.167	1203.5	148	15.50	0.027	1.7	86.0

DRAWING NO. PAGE 11 of 12 REV.
3LU89BG -

3LU89BG

REV.
-



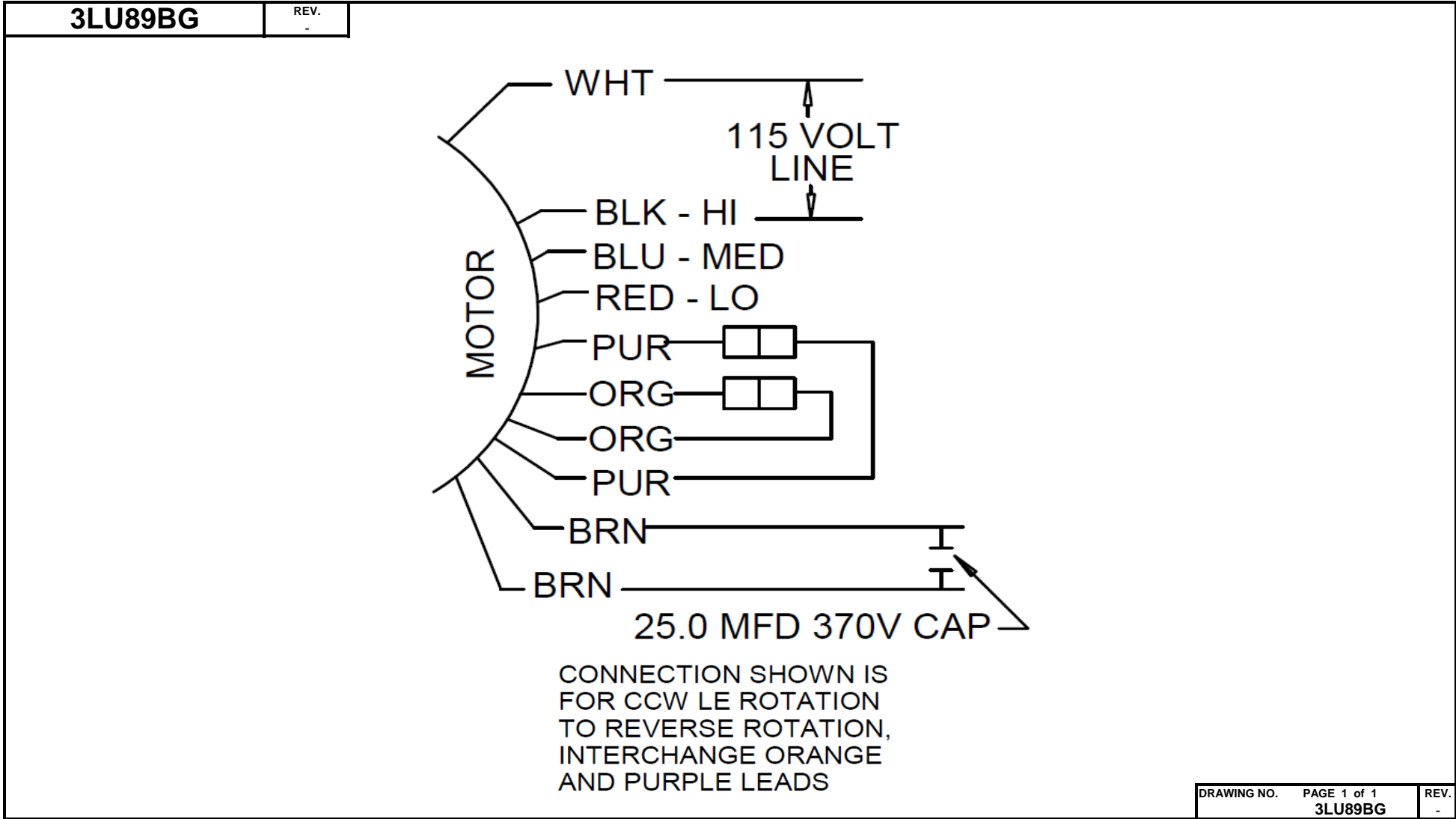
Curve Descriptions:
 Motor(1) Test 11 Run 115V 60 Hz 4P
 M3 CCW 25ufd Run
 □ SPEED vs TORQUE
 ■ SPEED vs WATTS
 △ SPEED vs ILine

Motor Ratings:
 (1) K055KDN2448 3LU89BG

2.0 4.0 6.0 8.0 10.0 12.0 14.0 16.0 18.0 A AMPS
 200 400 600 800 1000 1200 1400 1600 1800 WATTS
 4.0 8.0 12.0 16.0 20.0 24.0 28.0 32.0 36.0 Oz-Ft

DRAWING NO. PAGE 12 of 12 REV.
3LU89BG -

Wiring Diagram



Dayton[®]

DIRECT DRIVE BLOWER MOTOR

HP: 1.0

VOLTS: 115

AMPS: 10.0

RPM: 1625/3 SPD

DUTY: CONT

SF: 1.0

KVA CODE: A

ENCL: OAO

THERMALLY PROTECTED: AUTO

MFG. NO. PROT. CODE: 7A010

MTR REF: K55HXKDN-2448

PH: 1

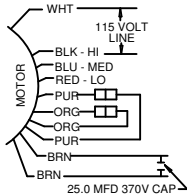
HZ: 60

FR: 48YZ

INS CL: B

AMB: 40 °C

SFA: 10.0

AVG. F.L.
EFF.Part
No 3LU89BG**Disconnect Power Before Making Any
Electrical Connections or Changes**MOTOR ROTATION IS CCW LEAD
END TO REVERSE ROTATION
INTERCHANGE ORG AND PUR LEADS
E37403
258501

Mfd for Dayton Electric Mfg. Co., Lake Forest, IL 60045 USA

Made in Mexico