

Dimensional Drawing



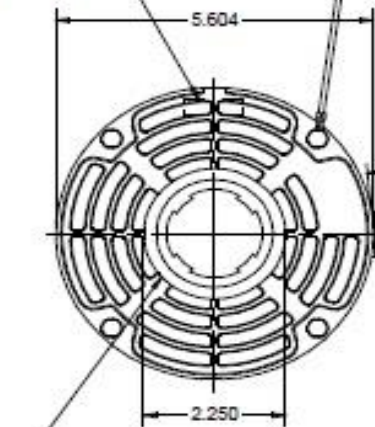
3LU88BH

REV.

MODEL	REF	CUSTOMER	HP	VOLTS	AMPS	HZ	RPM	ROTATION	CUSTOMER PN	DESCRIPTION / REMARKS
K55BWKDK-2366		DAYTON	3/4	208-230	6.1-5.8	60	1075	C.CW. LEAD END REV	3LU88BH	SAB

#16 GRNYEL GROUND LEAD TO BE 12±.250 BETWEEN CENTERS OF TERMS. TERM. TO FIT #10 SCREW.

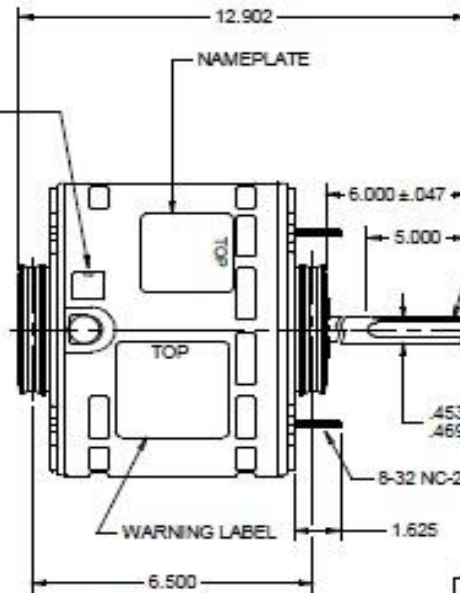
AUTOMATIC THERMAL PROTECTOR



SEAM WELD

7 LEADS, #18, .031 THICK INSUL. TO EXTEND BEYOND MOTOR.
 WHT = 30.000 +2 -0, BLK = 30.000 +2 -0,
 BLU = 30.000 +2 -0, YEL = 30.000 +2 -0, RED = 30.000 +2 -0,
 BRN = 30.000 +2 -0, BRNWHIT = 30.000 +2 -0

WARNING LABEL TO BE ADJACENT TO REVERSING LEADS



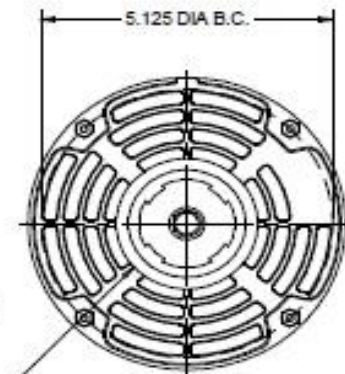
(2).250 FLAG TYPE Q.C. TERMS.

.750±.062 SKINNED

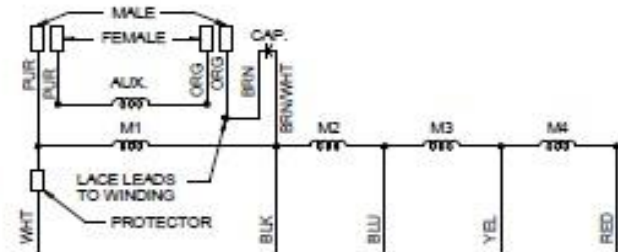
ROTATION: CCW VIEWING LEAD END WITH ORG-ORG AND PUR-PUR TO REV. ROTATION INTERCHANGE ORG. AND PUR LEADS.

ROTATION: C.CW. LEAD END REV

DOUBLE SHAFT FLAT 90° APART



INCLUDE KIT FOR 2.5 HUB RING ASSEMBLY



DIMENSIONS UNITS, INCHES

DRAWING NO.	PAGE 1 of 1	REV.
	3LU88BH	-

3LU88BH

REV.
-

SHADED-POLE & PSC MOTOR PERFORMANCE

HP:	3/4							
Poles:	6							
Ambient (°C):	40							
Altitude (FASL):	1000							
No. of Speeds:	4							
HIGH SPEED								
Volts:	208~230	115	208	230	277	460	100	200
HZ:	60	60	60	60	60	60	50	50
Service Factor:	1.0							
Efficiency:	@ Rated Load		64.8	58.6				
Power Factor:	@ Rated Load		81.5	79.0				
Amps:	@ No Load							
	@ Rated Load		4.6	5.3				
	@ Locked Rotor			11.6				
RPM:	@ Rated Load		1075	1075				
Torques: Oz.Ft.	Breakdown		64.8	80.5				
	Locked Rotor			17.8				
	Pull-Up							
	Rated Load		48.6	59.1				
	Service Factor		1.0	1.0				
Watts:	Rated Load		780	963				
Temperature Rise:	@ Rated Load							
Thermal Protector:	Trip Temp (°C)		120~130	120~130				
Winding Material:	Start (Auxiliary)		Copper	Copper				
	Run (Main)		Copper	Copper				
Capacitor:	Run (MFD / Volts)	10.0 MFD	370V					
	No. of Run Capacitors	1						
MEDIUM-HIGH SPEED								
HP:	3/4							
Volts:	208~230	115	208	230	277	460	100	200
HZ:	60	60	60	60	60	60	50	50
Efficiency:	@ Rated Load							
Power Factor:	@ Rated Load							
Amps:	@ No Load							
	@ Rated Load							
	@ Locked Rotor							
Torques: Oz.Ft.	Breakdown		44.8	56				
	Locked Rotor							
	Pull-Up							
	Rated Load							
Watts:	Rated Load							
Temperature Rise:	@ Rated Load							

DRAWING NO. PAGE REV.
3LU88BH -

3LU88BH

REV.
-

SHADED-POLE & PSC MOTOR PERFORMANCE

MEDIUM-LOW SPEED

HP:	3/4							
Volts:	208~230	115	208	230	277	460	100	200
HZ:	60	60	60	60	60	60	50	50
Efficiency:	@ Rated Load							
Power Factor:	@ Rated Load							
Amps:	@ No Load							
	@ Rated Load							
Torques: Oz.Ft.	Breakdown		36.2	45.6				
	Locked Rotor							
	Pull-Up							
	Rated Load							
Watts:	Rated Load							
Temperature Rise:	@ Rated Load							
Watts:	Rated Load							
Temperature Rise:	@ Rated Load							
Thermal Protector:	Trip Temp (°C)		120~130	120~130				
Winding Material:	Start (Auxiliary)	Copper						
	Run (Main)	Copper						

LOW SPEED

HP:	3/4							
Volts:	208~230	120	208	230	277	460	100	200
HZ:	60	60	60	60	60	60	50	50
Efficiency:	@ Rated Load							
Power Factor:	@ Rated Load							
Amps:	@ No Load							
	@ Rated Load							
Torques: Oz.Ft.	Breakdown		29.9	37.7				
	Locked Rotor							
	Pull-Up							
	Rated Load							
Watts:	Rated Load							
Temperature Rise:	@ Rated Load							

Notes:

DRAWING NO. PAGE REV.
3LU88BH -

Performance Data



3LU88BH

REV.

-

Dayton Manufacturing Company

Motor Description

Model: 3LU88BH
 Motor ID: 1
 Poles: 6
 Volts: 208-230
 Frequency: 60
 HP: .75
 Speed: 1075/4
 Phase: 1
 Protector: 7AM036 A5

Test Conditions

Test Type: Run
 Test Number: 2
 Poles: 6
 Volts: 208
 Hz: 60
 Rotation:
 Special Cond: M1 (HIGH SPD)
 Speed Conn:
 TestBoard: Amtps Performance Fixture #3
 Run Cap: 10
 Start Cap: 0µfd
 Environment:
 Tested: 9/23/2002 7:41:00 PM
 Tested By: Mitchell (Mitch), L.
 Gear Ratio: 1:1
 Bearing Friction: -1.06 Oz-Ft
 Windage Torque: -1.88 Oz-Ft

Special Points	Vline (V)	Vaux (V)	Vcap (V)	Iline (A)	Imain (A)	Iaux (A)	Watts	RPM	Tq (Oz-ft)	HP	Eff (%)	PF (%)	Cap
	208.0	241.7	346.7	2.837	3.608	1.315	203.1	1194	0.00	0.000	0.0	34.4	10.1
	208.0	238.0	340.1	2.855	3.485	1.290	269.9	1181	6.74	0.095	26.2	45.5	10.1
	208.0	234.5	333.8	2.963	3.457	1.269	335.1	1168	13.60	0.189	42.1	54.4	10.1
	208.0	230.6	326.6	3.163	3.512	1.246	412.6	1153	20.99	0.288	52.1	62.7	10.1
	208.0	226.8	320.2	3.406	3.638	1.222	486.6	1139	27.20	0.369	56.5	68.7	10.1
	208.0	222.8	314.4	3.672	3.815	1.202	558.2	1125	33.06	0.443	59.2	73.1	10.1
	208.0	217.6	307.9	3.980	4.046	1.180	633.9	1110	38.94	0.514	60.5	76.6	10.2
	208.0	211.8	301.3	4.297	4.307	1.157	707.6	1092	43.94	0.571	60.2	79.2	10.2
1075 RPM	208.0	205.5	294.2	4.629	4.599	1.132	780.3	1075	48.58	0.622	59.4	81.0	10.2
	208.0	205.3	294.0	4.639	4.608	1.132	782.5	1074	48.72	0.623	59.4	81.1	10.2
	208.0	198.0	286.5	5.008	4.951	1.105	859.6	1054	53.09	0.666	57.8	82.5	10.2
	208.0	190.4	278.9	5.389	5.321	1.078	932.8	1033	56.68	0.697	55.7	83.2	10.2
	208.0	182.2	271.4	5.787	5.717	1.051	1007.7	1009	59.83	0.719	53.2	83.7	10.3
	208.0	173.8	264.1	6.185	6.123	1.024	1080.3	984	62.19	0.729	50.3	84.0	10.3
	208.0	165.0	257.3	6.593	6.547	1.000	1151.2	956	63.75	0.726	47.0	83.9	10.3
	208.0	156.1	250.5	6.994	6.969	0.976	1219.2	926	64.29	0.709	43.4	83.8	10.3
BDT OZ-FT	208.0	148.7	245.4	7.314	7.309	0.956	1271.1	899	64.81	0.694	40.7	83.6	10.3
	208.0	147.0	244.3	7.392	7.394	0.952	1284.0	892	64.61	0.686	39.9	83.5	10.3
	208.0	138.0	238.8	7.787	7.818	0.932	1344.9	857	63.92	0.652	36.2	83.0	10.3
	208.0	128.8	233.9	8.170	8.234	0.913	1402.2	817	62.42	0.607	32.3	82.5	10.4
	208.0	120.1	229.9	8.529	8.627	0.897	1453.6	776	60.15	0.556	28.5	81.9	10.4
	208.0	111.2	226.5	8.873	9.007	0.884	1500.4	731	57.51	0.500	24.9	81.3	10.3
	208.0	102.6	223.8	9.195	9.365	0.873	1542.6	681	54.26	0.440	21.3	80.7	10.4
	208.0	94.2	221.7	9.492	9.697	0.865	1578.7	628	50.43	0.377	17.8	80.0	10.3
	208.0	85.8	220.3	9.763	10.004	0.858	1609.7	572	46.17	0.314	14.6	79.3	10.3
	208.0	77.8	219.5	10.005	10.286	0.852	1635.6	511	41.57	0.253	11.5	78.6	10.3
	208.0	70.1	218.9	10.205	10.521	0.848	1656.5	447	36.64	0.195	8.8	78.0	10.3
	208.0	62.8	220.1	10.372	10.718	0.847	1673.5	379	33.23	0.150	6.7	77.6	10.2
	208.0	56.5	222.1	10.508	10.885	0.852	1690.5	304	30.60	0.111	4.9	77.3	10.2
	208.0	51.7	224.0	10.607	11.007	0.861	1702.7	227	26.27	0.071	3.1	77.2	10.2
	208.0	46.5	225.6	10.669	11.097	0.872	1711.7	142	20.54	0.035	1.5	77.1	10.3

DRAWING NO. PAGE 1 of 16 REV.
3LU88BH -

Performance Data



3LU88BH REV.
-



Curve Descriptions:
 Motor(1) Test 2 Run 208V 60 Hz 6P
 M1 (HIGH SPD) 10ufd Run
 □ SPEED vs WATTS
 ■ SPEED vs TORQUE
 △ SPEED vs ILine

Motor Ratings:
 (1) 3LU88BH

DRAWING NO.	PAGE 2 of 16	REV.
3LU88BH		-

Performance Data



3LU88BH

REV.

-

Dayton Manufacturing Company

Motor Description

Model: 3LU88BH
 Motor ID: 1
 Poles: 6
 Volts: 208-230
 Frequency: 60
 HP: .75
 Speed: 1075/4
 Phase: 1
 Protector: 7AM036 A5

Test Conditions

Test Type: Run
 Test Number: 3
 Poles: 6
 Volts: 208
 Hz: 60
 Rotation:
 Special Cond: M2 (MED HI)
 Speed Conn:
 TestBoard: Amtps Performance Fixture #3
 Run Cap: 10
 Start Cap: 0µfd
 Environment:
 Tested: 9/23/2002 7:19:09 PM
 Tested By: Mitchell (Mitch), L.
 Gear Ratio: 1:1
 Bearing Friction: -1.00 Oz-Ft
 Windage Torque: -1.79 Oz-Ft

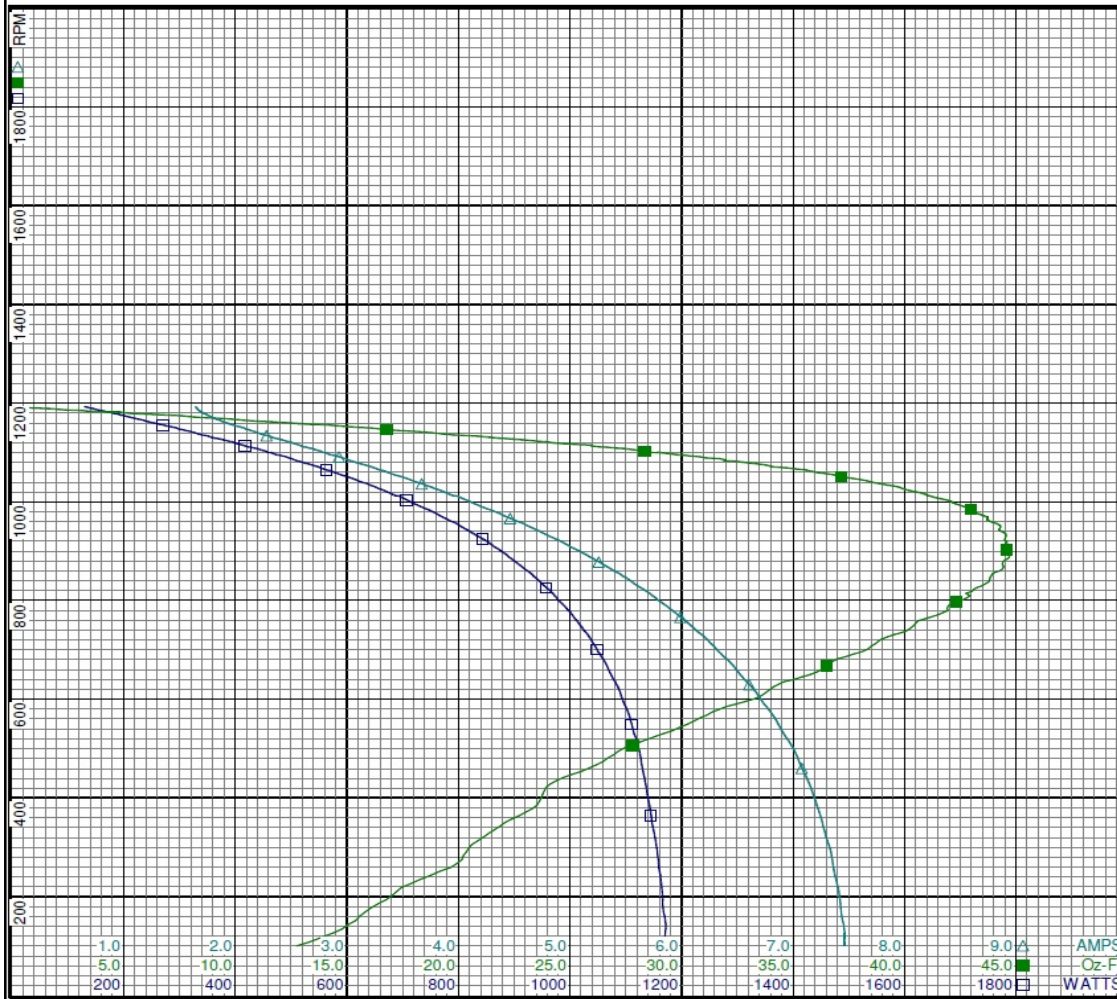
Special Points	Vline (V)	Vaux (V)	Vcap (V)	Iline (A)	Imain (A)	Iaux (A)	Watts	RPM	Tq (Oz-ft)	HP	Eff (%)	PF (%)	Cap
	208.0	204.4	294.7	1.641	2.309	1.124	129.5	1192	0.00	0.000	0.0	37.9	10.1
	208.0	201.3	287.6	1.714	2.235	1.103	181.4	1179	5.28	0.074	30.5	50.9	10.2
	208.0	198.4	280.4	1.845	2.235	1.080	230.7	1166	10.13	0.141	45.5	60.1	10.2
	208.0	195.8	273.3	2.018	2.295	1.051	280.5	1153	14.84	0.204	54.2	66.8	10.2
	208.0	193.1	266.8	2.227	2.404	1.026	333.5	1137	19.29	0.261	58.4	72.0	10.2
	208.0	189.2	260.1	2.465	2.558	1.001	389.3	1122	23.66	0.316	60.6	75.9	10.2
	208.0	185.3	253.9	2.689	2.724	0.978	439.4	1108	27.42	0.362	61.4	78.5	10.2
	208.0	180.6	247.7	2.930	2.923	0.956	490.4	1091	30.80	0.400	60.9	80.5	10.2
1075 RPM	208.0	176.2	242.1	3.151	3.120	0.936	535.4	1075	33.65	0.431	60.0	81.7	10.3
	208.0	175.5	241.2	3.190	3.154	0.934	542.7	1072	33.96	0.434	59.6	81.8	10.3
	208.0	170.0	234.9	3.452	3.399	0.912	594.3	1053	36.97	0.463	58.2	82.8	10.3
	208.0	164.1	228.2	3.731	3.672	0.888	646.9	1031	39.54	0.485	56.0	83.4	10.3
	208.0	157.9	221.9	4.010	3.953	0.865	697.6	1009	41.30	0.496	53.0	83.6	10.3
	208.0	151.3	215.6	4.294	4.247	0.842	747.9	983	43.01	0.503	50.2	83.7	10.4
	208.0	144.5	209.8	4.582	4.550	0.821	796.6	956	44.12	0.502	47.0	83.6	10.4
	208.0	137.6	204.2	4.866	4.855	0.801	842.9	925	44.49	0.490	43.3	83.3	10.4
BDT OZ-FT	208.0	134.0	201.6	5.006	5.009	0.791	864.6	908	44.77	0.484	41.8	83.0	10.4
	208.0	130.5	199.2	5.148	5.162	0.782	886.2	892	44.65	0.474	39.9	82.8	10.4
	208.0	123.5	194.6	5.422	5.461	0.764	927.4	857	44.05	0.449	36.1	82.2	10.4
	208.0	116.2	190.7	5.685	5.753	0.749	965.3	818	43.02	0.419	32.4	81.6	10.4
	208.0	108.8	187.3	5.941	6.038	0.736	1000.7	775	41.73	0.385	28.7	81.0	10.4
	208.0	101.6	184.7	6.179	6.306	0.725	1031.5	731	39.54	0.344	24.9	80.3	10.4
	208.0	94.6	182.6	6.400	6.557	0.716	1058.8	682	37.04	0.301	21.2	79.5	10.4
	208.0	87.4	181.2	6.608	6.795	0.709	1083.1	630	34.34	0.257	17.7	78.8	10.4
	208.0	80.5	180.2	6.798	7.016	0.703	1103.9	574	31.38	0.214	14.5	78.1	10.3
	208.0	73.5	179.8	6.966	7.215	0.699	1120.5	513	28.16	0.172	11.5	77.3	10.3
	208.0	67.0	179.5	7.106	7.385	0.697	1132.0	447	25.09	0.134	8.8	76.6	10.3
	208.0	60.0	180.9	7.223	7.529	0.696	1143.3	378	23.31	0.105	6.8	76.1	10.2
	208.0	53.6	182.8	7.318	7.648	0.702	1154.2	305	20.59	0.075	4.8	75.8	10.2
	208.0	48.2	184.7	7.393	7.746	0.712	1163.5	226	17.86	0.048	3.1	75.7	10.2
	208.0	43.0	186.3	7.452	7.827	0.721	1171.8	143	15.06	0.026	1.6	75.6	10.3

DRAWING NO. PAGE 3 of 16 REV.
3LU88BH -

Performance Data



3LU88BH REV.
-



Curve Descriptions:
 Motor(1) Test 3 Run 208V 60 Hz 6P
 M2 (MED HI) 10ufd Run
 □ SPEED vs WATTS
 ■ SPEED vs TORQUE
 △ SPEED vs ILine

Motor Ratings:
 (1) 3LU88BH

DRAWING NO. PAGE 4 of 16 REV.
 3LU88BH -

Dayton Electric Mfg. Co. Lake Forest, IL 60045 USA

Performance Data



3LU88BH

REV.
-

Dayton Manufacturing Company

Motor Description

Model: 3LU88BH
 Motor ID: 1
 Poles: 6
 Volts: 208-230
 Frequency: 60
 HP: .75
 Speed: 1075/4
 Phase: 1
 Protector: 7AM036 A5

Test Conditions

Test Type: Run
 Test Number: 4
 Poles: 6
 Volts: 208
 Hz: 60
 Rotation:
 Special Cond: M3 (MED LO)
 Speed Conn:
 TestBoard: Amps Performance Fixture #3
 Run Cap: 10
 Start Cap: 0µfd
 Environment:
 Tested: 9/23/2002 6:45:04 PM
 Tested By: Mitchell (Mitch), L.
 Gear Ratio: 1:1
 Bearing Friction: -1.03 Oz-Ft
 Windage Torque: -1.93 Oz-Ft

Special Points	Vline (V)	Vaux (V)	Vcap (V)	Iline (A)	Imain (A)	Iaux (A)	Watts	RPM	Tq (Oz-ft)	HP	Eff (%)	PF (%)	Cap
	208.0	185.9	266.4	1.264	1.883	1.024	102.0	1192	0.00	0.000	0.0	38.8	10.2
	208.0	183.2	259.1	1.341	1.820	1.002	146.1	1179	4.20	0.059	30.1	52.4	10.3
	208.0	181.2	251.7	1.475	1.831	0.976	189.0	1166	8.43	0.117	46.2	61.6	10.3
	208.0	179.9	245.0	1.632	1.887	0.948	229.8	1152	12.16	0.167	54.1	67.7	10.3
	208.0	177.9	238.6	1.822	1.985	0.921	275.0	1138	15.72	0.213	57.8	72.6	10.2
	208.0	175.0	232.3	2.014	2.101	0.895	319.7	1121	19.29	0.258	60.1	76.3	10.2
	208.0	171.6	226.4	2.210	2.247	0.874	361.7	1106	22.42	0.295	60.9	78.7	10.2
	208.0	167.8	220.7	2.405	2.406	0.853	402.0	1090	25.20	0.327	60.7	80.4	10.3
1075 RPM	208.0	164.3	215.5	2.587	2.569	0.835	438.4	1075	27.41	0.351	59.7	81.5	10.3
	208.0	163.7	214.8	2.618	2.595	0.832	444.4	1072	27.83	0.355	59.6	81.6	10.3
	208.0	159.3	208.8	2.842	2.804	0.812	487.2	1052	30.08	0.377	57.7	82.4	10.3
	208.0	154.4	202.9	3.069	3.025	0.791	529.4	1031	32.04	0.393	55.4	82.9	10.3
	208.0	149.2	197.2	3.302	3.262	0.770	570.9	1008	33.68	0.404	52.8	83.1	10.4
	208.0	144.0	191.4	3.537	3.506	0.750	611.5	983	34.93	0.409	49.9	83.1	10.4
	208.0	138.4	186.2	3.774	3.758	0.731	650.7	955	35.71	0.406	46.5	82.9	10.4
BDT OZ-FT	208.0	132.5	181.2	4.009	4.011	0.713	688.4	925	36.24	0.399	43.2	82.6	10.4
	208.0	132.5	181.2	4.009	4.011	0.713	688.4	925	36.24	0.399	43.2	82.6	10.4
	208.0	126.6	176.6	4.240	4.264	0.696	723.7	892	35.99	0.382	39.4	82.1	10.5
	208.0	120.5	172.5	4.465	4.514	0.680	756.6	856	35.73	0.364	35.9	81.5	10.5
	208.0	114.5	169.3	4.681	4.756	0.667	786.6	818	34.71	0.338	32.0	80.8	10.5
	208.0	108.3	166.4	4.887	4.989	0.656	814.1	777	33.26	0.308	28.2	80.1	10.5
	208.0	102.3	164.1	5.085	5.217	0.647	838.4	731	31.89	0.277	24.7	79.3	10.4
	208.0	96.1	162.5	5.268	5.427	0.639	860.0	682	29.96	0.243	21.1	78.5	10.4
	208.0	90.2	161.3	5.437	5.625	0.635	878.8	629	27.61	0.207	17.6	77.7	10.4
	208.0	84.3	160.8	5.591	5.807	0.631	894.3	573	25.07	0.171	14.3	76.9	10.4
	208.0	78.4	160.6	5.728	5.970	0.627	906.9	511	22.36	0.136	11.2	76.1	10.4
	208.0	72.4	161.1	5.846	6.115	0.622	916.9	449	19.84	0.106	8.6	75.4	10.2
	208.0	67.5	162.0	5.929	6.221	0.624	922.5	380	18.01	0.081	6.6	74.8	10.2
	208.0	61.8	164.4	6.008	6.321	0.630	932.7	306	17.17	0.063	5.0	74.6	10.2
	208.0	57.4	165.6	6.071	6.404	0.639	939.0	228	14.74	0.040	3.2	74.4	10.2
	208.0	53.0	167.3	6.116	6.471	0.649	943.8	143	11.38	0.019	1.5	74.2	10.3

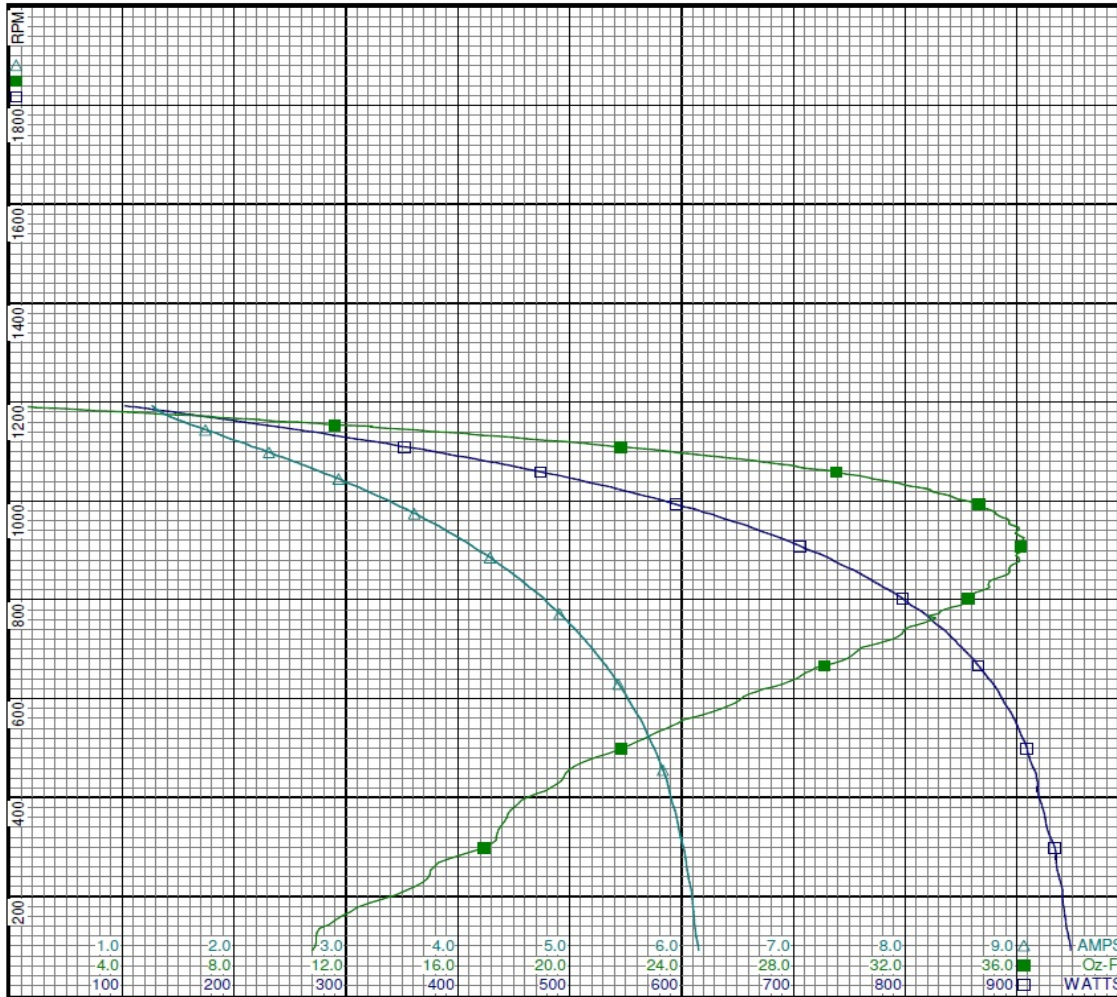
DRAWING NO. PAGE 5 of 16 REV.
3LU88BH -

Performance Data



3LU88BH

REV.
-



Curve Descriptions:
 Motor(1) Test 4 Run 208V 60 Hz 6P
 M3 (MED LO) 10ufd Run
 □ SPEED vs WATTS
 ■ SPEED vs TORQUE
 △ SPEED vs ILine

Motor Ratings:
 (1) 3LU88BH

DRAWING NO. PAGE 6 of 16 REV.
3LU88BH -

©2019 W.W. Grainger, Inc. This design may not be reproduced, modified or redistributed without written permission from W.W. Grainger, Inc.

Performance Data



3LU88BH

REV.

-

Dayton Manufacturing Company

Motor Description

Model: 3LU88BH
 Motor ID: 1
 Poles: 6
 Volts: 208-230
 Frequency: 60
 HP: .75
 Speed: 1075/4
 Phase: 1
 Protector: 7AM036 A5

Test Conditions

Test Type: Run
 Test Number: 5
 Poles: 6
 Volts: 208
 Hz: 60
 Rotation:
 Special Cond: M4 (LO)
 Speed Conn:
 TestBoard: Amps Performance Fixture #3
 Run Cap: 10
 Start Cap: 0µfd
 Environment:
 Tested: 9/23/2002 6:06:34 PM
 Tested By: Mitchell (Mitch), L.
 Gear Ratio: 1:1
 Bearing Friction: -1.13 Oz-Ft
 Windage Torque: -1.56 Oz-Ft

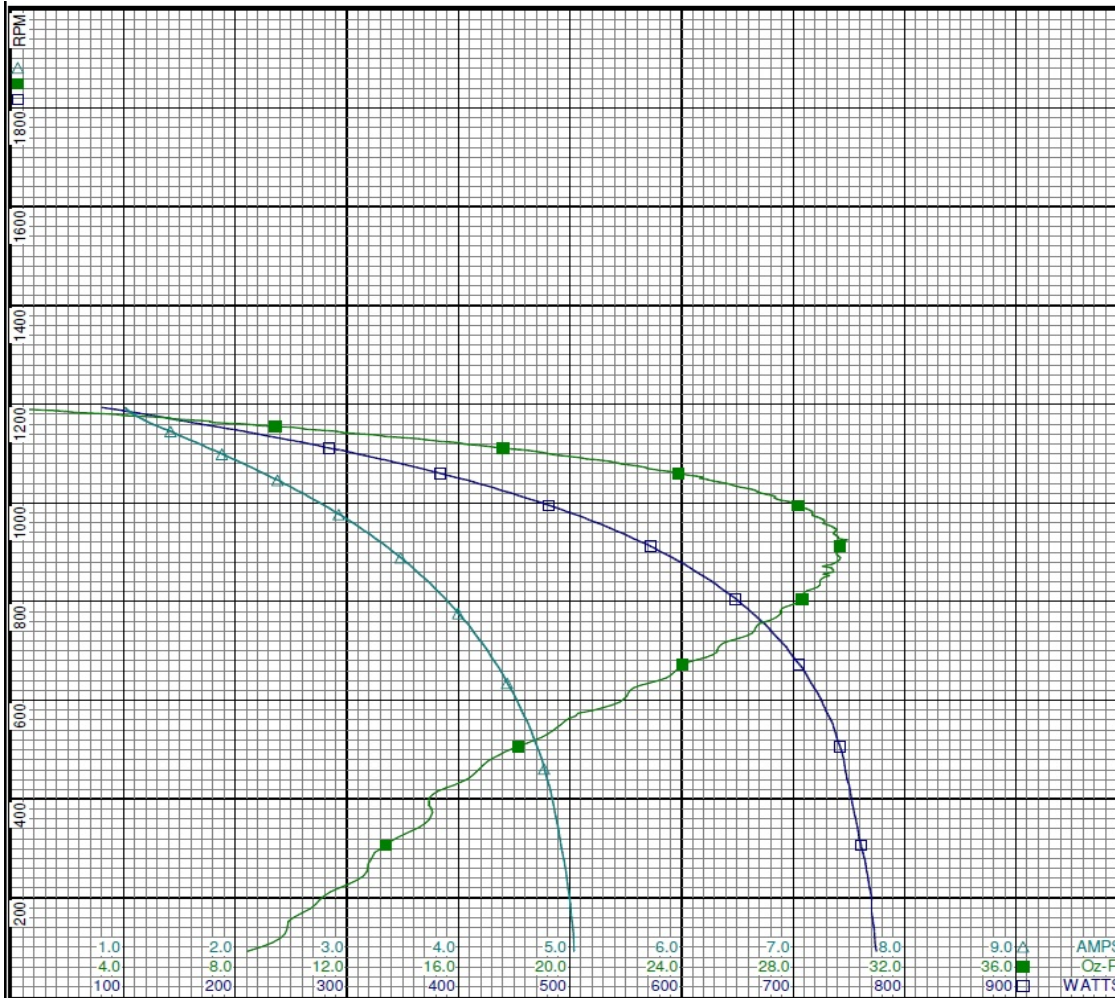
Special Points	Vline (V)	Vaux (V)	Vcap (V)	Iline (A)	Imain (A)	Iaux (A)	Watts	RPM	Tq (Oz-ft)	HP	Eff (%)	PF (%)	Cap
	208.0	171.8	243.1	1.011	1.612	0.937	80.3	1193	0.00	0.000	0.0	38.2	10.2
	208.0	170.2	236.5	1.079	1.553	0.915	116.8	1180	3.39	0.048	30.4	52.0	10.3
	208.0	169.4	229.6	1.188	1.555	0.893	151.1	1167	6.73	0.093	46.1	61.1	10.3
	208.0	169.1	222.9	1.325	1.595	0.862	185.8	1153	10.01	0.137	55.2	67.4	10.3
	208.0	168.2	217.4	1.475	1.665	0.840	220.6	1139	12.62	0.171	57.9	71.9	10.3
	208.0	166.1	211.4	1.641	1.757	0.815	258.7	1123	15.68	0.210	60.5	75.8	10.2
	208.0	163.5	206.0	1.795	1.861	0.795	292.2	1107	18.24	0.240	61.4	78.3	10.2
	208.0	160.7	200.6	1.958	1.990	0.775	326.0	1091	20.44	0.265	60.7	80.0	10.3
1075 RPM	208.0	157.7	195.8	2.112	2.120	0.758	356.4	1075	22.38	0.286	60.0	81.1	10.3
	208.0	157.3	195.3	2.129	2.136	0.756	359.6	1073	22.56	0.288	59.8	81.2	10.3
	208.0	153.9	190.0	2.302	2.294	0.738	393.0	1054	24.53	0.308	58.4	82.1	10.3
	208.0	150.1	184.5	2.487	2.471	0.718	427.2	1033	25.97	0.319	55.8	82.6	10.3
	208.0	146.0	179.2	2.676	2.659	0.700	460.5	1010	27.33	0.328	53.2	82.7	10.4
	208.0	141.6	174.1	2.868	2.857	0.681	493.7	985	28.59	0.335	50.7	82.7	10.4
	208.0	137.1	169.3	3.061	3.060	0.664	525.7	958	29.08	0.332	47.1	82.6	10.4
	208.0	132.3	164.8	3.255	3.269	0.648	556.8	927	29.61	0.327	43.8	82.2	10.4
BDT OZ-FT	208.0	131.8	164.4	3.274	3.290	0.646	560.0	925	29.94	0.330	43.9	82.2	10.4
	208.0	127.5	160.6	3.444	3.477	0.633	585.8	896	29.56	0.315	40.1	81.8	10.5
	208.0	122.3	156.9	3.630	3.683	0.619	613.3	860	29.44	0.301	36.7	81.2	10.5
	208.0	117.2	153.7	3.809	3.885	0.607	638.2	822	28.50	0.279	32.6	80.6	10.5
	208.0	112.1	151.1	3.980	4.081	0.596	661.4	781	27.55	0.256	28.9	79.9	10.5
	208.0	106.9	149.1	4.144	4.269	0.588	682.1	735	26.52	0.232	25.4	79.1	10.5
	208.0	101.7	147.6	4.297	4.446	0.582	700.3	687	24.89	0.204	21.7	78.4	10.5
	208.0	96.7	146.6	4.436	4.612	0.578	715.9	635	22.85	0.173	18.0	77.6	10.5
	208.0	91.7	146.0	4.565	4.766	0.574	729.2	579	20.81	0.143	14.7	76.8	10.4
	208.0	86.7	145.9	4.681	4.908	0.570	739.7	519	18.69	0.115	11.6	76.0	10.4
	208.0	82.0	146.1	4.777	5.027	0.568	747.1	455	16.63	0.090	9.0	75.2	10.3
	208.0	77.2	147.1	4.851	5.123	0.568	753.2	388	14.93	0.069	6.8	74.7	10.2
	208.0	73.1	148.5	4.913	5.202	0.573	760.1	314	13.58	0.051	5.0	74.4	10.2
	208.0	68.7	150.5	4.973	5.282	0.580	767.2	236	12.36	0.035	3.4	74.2	10.2
	208.0	64.5	152.5	5.016	5.345	0.591	771.5	152	9.90	0.018	1.7	73.9	10.3

DRAWING NO. PAGE 7 of 16 REV.
 3LU88BH -

Performance Data



3LU88BH REV. -



Dayton

Curve Descriptions:
 Motor(1) Test 5 Run 208V 60 Hz 6P
 M4 (LO) 10ufd Run
 □ SPEED vs WATTS
 ■ SPEED vs TORQUE
 △ SPEED vs ILine

Motor Ratings:
 (1) 3LU88BH

DRAWING NO. PAGE 8 of 16 REV.
 3LU88BH -

Performance Data



3LU88BH

REV.

-

Dayton Manufacturing Company

Motor Description

Model: 3LU88BH
 Motor ID: 1
 Poles: 6
 Volts: 208-230
 Frequency: 60
 HP: .75
 Speed: 1075/4
 Phase: 1
 Protector: 7AM036 A5

Test Conditions

Test Type: Run
 Test Number: 22
 Poles: 6
 Volts: 230
 Hz: 60
 Rotation:
 Special Cond: M1 (HIGH SPD)
 Speed Conn:
 TestBoard: Amtps Performance Fixture #3
 Run Cap: 10
 Start Cap: 0µfd
 Environment:
 Tested: 9/23/2002 7:41:51 PM
 Tested By: Mitchell (Mitch), L.
 Gear Ratio: 1:1
 Bearing Friction: -1.08 Oz-Ft
 Windage Torque: -1.86 Oz-Ft

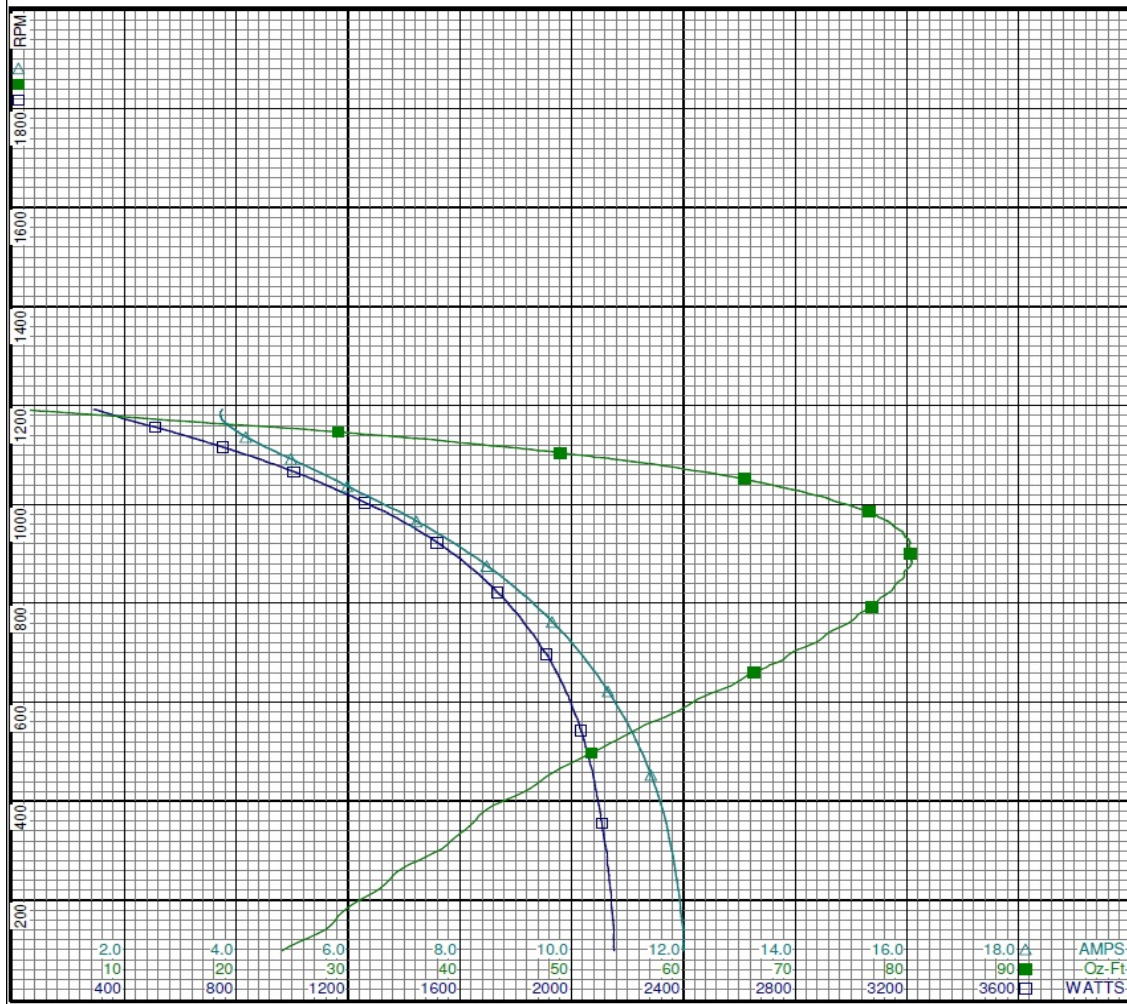
Special Points	Vline (V)	Vaux (V)	Vcap (V)	Iline (A)	Imain (A)	Iaux (A)	Watts	RPM	Tq (Oz-ft)	HP	Eff (%)	PF (%)	Cap
	230.0	260.9	378.7	3.746	4.570	1.439	289	1192	0.00	0.000	0.0	33.5	10.1
	230.0	258.0	373.2	3.711	4.430	1.418	352	1181	6.92	0.097	20.6	41.2	10.1
	230.0	255.6	368.1	3.751	4.365	1.401	416	1170	13.89	0.193	34.7	48.2	10.1
	230.0	252.3	361.9	3.873	4.355	1.380	499	1158	22.34	0.308	46.0	56.0	10.1
	230.0	248.7	355.9	4.041	4.406	1.358	578	1145	29.95	0.408	52.6	62.2	10.1
	230.0	245.0	350.2	4.236	4.500	1.336	655	1132	36.76	0.496	56.4	67.3	10.1
	230.0	240.8	344.6	4.468	4.647	1.314	732	1118	42.68	0.568	57.9	71.3	10.1
	230.0	236.1	338.6	4.738	4.846	1.292	813	1104	48.98	0.644	59.0	74.6	10.1
	230.0	230.7	332.3	5.038	5.085	1.269	896	1089	54.68	0.709	59.0	77.3	10.1
0.75 HP	230.0	226.6	327.7	5.253	5.268	1.253	953	1077	58.50	0.750	58.7	78.9	10.1
1075 RPM	230.0	225.9	326.9	5.292	5.301	1.251	963	1075	59.13	0.757	58.6	79.1	10.2
	230.0	224.7	325.6	5.356	5.356	1.246	978	1072	59.95	0.765	58.4	79.4	10.2
	230.0	218.1	318.8	5.688	5.653	1.222	1060	1053	64.97	0.815	57.3	81.1	10.2
	230.0	211.1	311.7	6.025	5.971	1.197	1139	1034	68.77	0.847	55.4	82.2	10.2
	230.0	203.3	304.5	6.405	6.341	1.171	1224	1013	72.79	0.878	53.5	83.1	10.2
	230.0	195.4	297.3	6.805	6.742	1.146	1308	990	75.78	0.894	51.0	83.6	10.2
	230.0	186.8	290.1	7.225	7.171	1.122	1393	966	78.30	0.900	48.2	83.8	10.3
	230.0	178.2	283.3	7.631	7.592	1.096	1472	939	79.71	0.891	45.2	83.9	10.3
	230.0	169.3	276.8	8.037	8.019	1.073	1548	911	80.31	0.871	42.0	83.8	10.3
BDT OZ-FT	230.0	167.4	275.5	8.129	8.116	1.068	1566	903	80.51	0.866	41.2	83.8	10.3
	230.0	160.4	270.9	8.439	8.444	1.051	1622	879	80.38	0.842	38.7	83.6	10.3
	230.0	151.3	265.4	8.832	8.865	1.030	1691	846	79.38	0.799	35.3	83.2	10.3
	230.0	142.3	260.5	9.211	9.274	1.012	1755	811	77.62	0.749	31.8	82.9	10.3
	230.0	133.3	256.2	9.572	9.669	0.998	1815	772	75.45	0.693	28.5	82.4	10.3
	230.0	124.6	252.7	9.923	10.054	0.984	1870	731	72.50	0.631	25.2	81.9	10.3
	230.0	116.1	249.6	10.245	10.428	0.972	1921	686	68.95	0.563	21.9	81.5	10.3
	230.0	107.5	247.2	10.549	10.768	0.962	1965	639	64.73	0.493	18.7	81.0	10.3
	230.0	99.1	245.3	10.829	11.082	0.954	2002	589	60.07	0.421	15.7	80.4	10.3
	230.0	91.1	244.2	11.092	11.377	0.947	2037	537	55.15	0.352	12.9	79.9	10.3
	230.0	82.9	243.4	11.327	11.642	0.941	2064	479	50.14	0.286	10.3	79.2	10.3
	230.0	75.3	243.5	11.530	11.876	0.938	2089	418	45.67	0.227	8.1	78.8	10.2
	230.0	68.3	244.4	11.692	12.066	0.940	2109	356	41.18	0.175	6.2	78.4	10.2
	230.0	62.3	246.4	11.814	12.213	0.945	2126	288	36.97	0.127	4.4	78.3	10.2
	230.0	56.9	247.8	11.915	12.341	0.954	2140	217	32.45	0.084	2.9	78.1	10.2
	230.0	51.7	250.4	11.992	12.447	0.962	2150	141	28.04	0.047	1.6	77.9	10.2

DRAWING NO. PAGE 9 of 16 REV.
 3LU88BH -

Performance Data



3LU88BH REV.
-



Curve Descriptions:
 Motor(1) Test 22 Run 230V 60 Hz 6P
 M1 (HIGH SPD) 10ufd Run
 □ SPEED vs WATTS
 ■ SPEED vs TORQUE
 △ SPEED vs ILine

Motor Ratings:
 (1) 3LU88BH

DRAWING NO. PAGE 10 of 16 REV.
3LU88BH -

Dayton Electric Mfg. Co. Lake Forest, IL 60045 USA

Performance Data



3LU88BH

REV.

-

Dayton Manufacturing Company

Motor Description

Model: 3LU88BH
 Motor ID: 1
 Poles: 6
 Volts: 208-230
 Frequency: 60
 HP: .75
 Speed: 1075/4
 Phase: 1
 Protector: 7AM036 A5

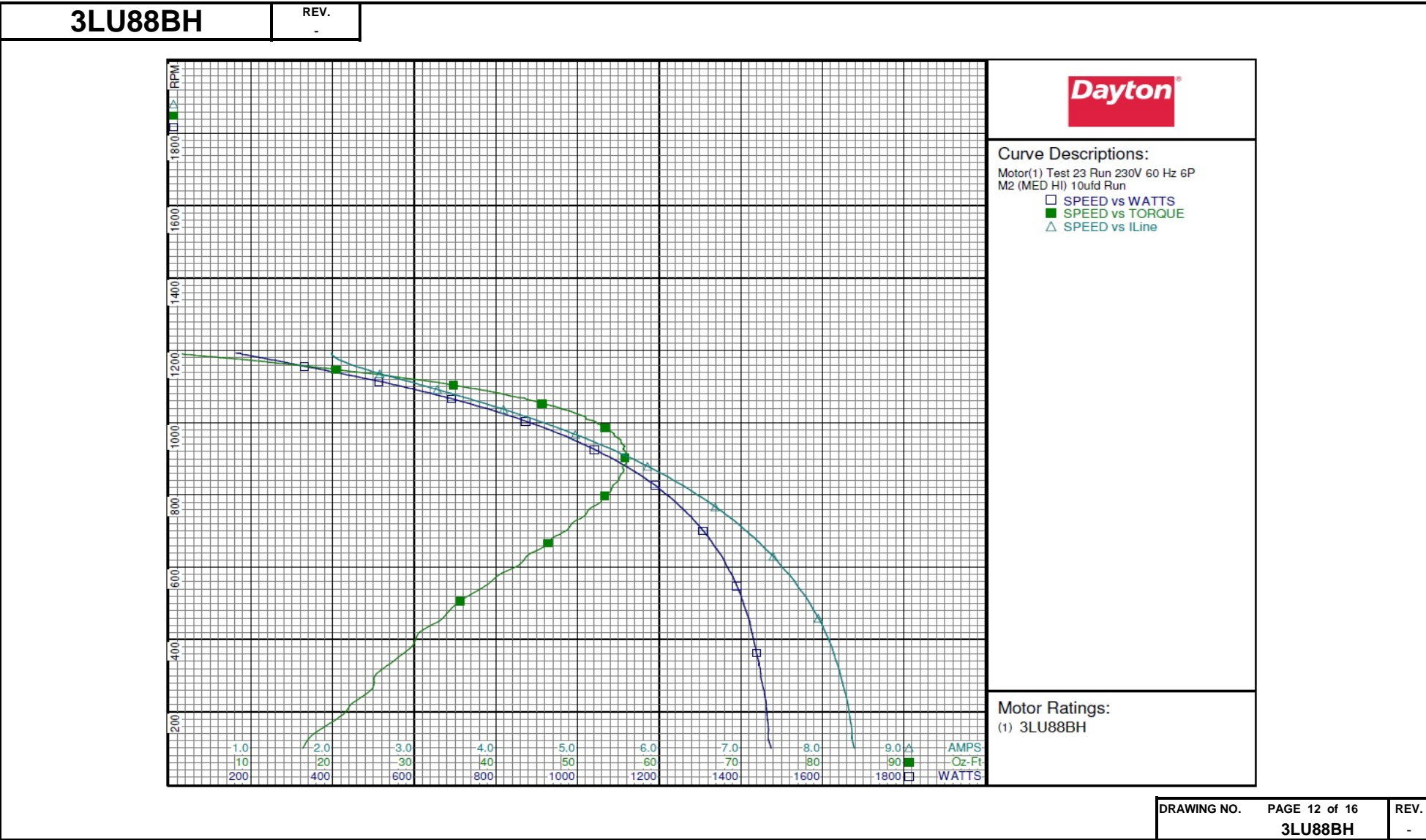
Test Conditions

Test Type: Run
 Test Number: 23
 Poles: 6
 Volts: 230
 Hz: 60
 Rotation:
 Special Cond: M2 (MED HI)
 Speed Conn:
 TestBoard: Amtps Performance Fixture #3
 Run Cap: 10
 Start Cap: 0µfd
 Environment:
 Tested: 9/23/2002 7:20:07 PM
 Tested By: Mitchell (Mitch), L.
 Gear Ratio: 1:1
 Bearing Friction: -1.14 Oz-Ft
 Windage Torque: -1.77 Oz-Ft

Special Points	Vline (V)	Vaux (V)	Vcap (V)	Iline (A)	Imain (A)	Iaux (A)	Watts	RPM	Tq(Oz-ft)	HP	Eff (%)	PF (%)	Cap
	230.0	223.6	322.2	1.985	2.722	1.223	162.4	1192	0.00	0.000	0.0	35.6	10.1
	230.0	220.8	315.3	2.033	2.626	1.200	222.2	1179	6.19	0.087	29.2	47.5	10.1
	230.0	218.1	308.5	2.152	2.606	1.177	282.3	1167	12.21	0.170	44.8	57.0	10.1
	230.0	215.5	301.6	2.326	2.654	1.155	344.7	1152	18.10	0.248	53.7	64.4	10.2
	230.0	212.9	295.4	2.523	2.745	1.130	405.7	1139	23.32	0.316	58.1	69.9	10.1
	230.0	209.3	289.0	2.768	2.898	1.107	472.9	1123	28.68	0.383	60.5	74.3	10.2
	230.0	205.2	282.6	3.020	3.080	1.086	537.5	1108	33.57	0.443	61.5	77.4	10.2
	230.0	200.3	276.0	3.283	3.291	1.063	601.3	1092	37.90	0.493	61.1	79.6	10.2
1075 RPM	230.0	195.6	269.9	3.528	3.503	1.042	659.1	1075	41.53	0.531	60.2	81.2	10.2
	230.0	194.8	269.2	3.559	3.531	1.039	665.8	1073	41.85	0.535	59.9	81.3	10.2
	230.0	189.0	262.0	3.853	3.801	1.013	731.7	1053	45.82	0.575	58.6	82.6	10.3
	230.0	182.5	255.0	4.155	4.093	0.991	796.0	1032	49.00	0.602	56.4	83.3	10.3
	230.0	175.7	248.0	4.466	4.403	0.966	859.9	1009	51.04	0.613	53.2	83.7	10.3
	230.0	168.6	241.1	4.783	4.729	0.941	923.4	983	53.50	0.626	50.6	83.9	10.4
	230.0	161.1	234.5	5.103	5.066	0.917	982.9	955	55.07	0.626	47.5	83.7	10.4
	230.0	153.4	228.2	5.424	5.406	0.893	1041.5	925	55.61	0.613	43.9	83.5	10.4
BDT OZ-FT	230.0	145.7	222.4	5.742	5.742	0.872	1099.0	892	56.04	0.595	40.4	83.2	10.4
	230.0	145.7	222.4	5.742	5.747	0.872	1099.0	892	56.04	0.595	40.4	83.2	10.4
	230.0	137.6	217.2	6.050	6.084	0.852	1150.7	857	55.32	0.564	36.6	82.7	10.4
	230.0	129.6	212.6	6.347	6.410	0.834	1199.1	818	54.17	0.527	32.8	82.1	10.4
	230.0	121.6	208.6	6.635	6.730	0.819	1244.2	775	52.54	0.485	29.1	81.5	10.4
	230.0	113.6	205.5	6.909	7.036	0.804	1284.2	731	49.92	0.434	25.2	80.8	10.4
	230.0	105.6	202.9	7.162	7.323	0.795	1321.0	682	47.01	0.382	21.6	80.2	10.4
	230.0	97.8	200.9	7.398	7.592	0.785	1353.5	630	43.74	0.328	18.1	79.5	10.4
	230.0	90.1	199.7	7.617	7.845	0.778	1380.9	573	40.03	0.273	14.8	78.8	10.3
	230.0	82.0	198.9	7.811	8.072	0.773	1401.7	513	36.07	0.220	11.7	78.0	10.3
	230.0	74.4	198.8	7.982	8.277	0.769	1422.6	447	32.75	0.174	9.1	77.5	10.3
	230.0	67.1	199.8	8.117	8.443	0.770	1436.2	377	29.57	0.133	6.9	76.9	10.2
	230.0	60.8	201.1	8.219	8.570	0.776	1449.0	305	25.32	0.092	4.7	76.7	10.2
	230.0	53.7	203.7	8.307	8.687	0.785	1462.0	226	22.54	0.061	3.1	76.5	10.2
	230.0	47.8	205.2	8.362	8.767	0.795	1467.4	142	17.90	0.030	1.5	76.3	10.3

DRAWING NO. PAGE 11 of 16 REV.
 3LU88BH -

Performance Data



DRAWING NO. 3LU88BH	PAGE 12 of 16
REV. -	

Dayton Electric Mfg. Co. Lake Forest, IL 60045 USA

Performance Data



3LU88BH

REV.
-

Dayton Manufacturing Company

Motor Description

Model: 3LU88BH
 Motor ID: 1
 Poles: 6
 Volts: 208-230
 Frequency: 60
 HP: .75
 Speed: 1075/4
 Phase: 1
 Protector: 7AM036 A5

Test Conditions

Test Type: Run
 Test Number: 24
 Poles: 6
 Volts: 230
 Hz: 60
 Rotation:
 Special Cond: M3 (MED LO)
 Speed Conn:
 TestBoard: Amps Performance Fixture #3
 Run Cap: 10
 Start Cap: 0µfd
 Environment:
 Tested: 9/23/2002 6:46:02 PM
 Tested By: Mitchell (Mitch), L.
 Gear Ratio: 1:1
 Bearing Friction: -1.02 Oz-Ft
 Windage Torque: -1.84 Oz-Ft

Special Points	Vline (V)	Vaux (V)	Vcap (V)	Iline (A)	Imain (A)	Iaux (A)	Watts	RPM	Tq (Oz-ft)	HP	Eff (%)	PF (%)	Cap
	230.0	205.2	292.9	1.477	2.164	1.118	125.1	1192	0.00	0.000	0.0	36.8	10.1
	230.0	202.9	285.8	1.542	2.085	1.097	176.9	1180	5.13	0.072	30.4	49.9	10.2
	230.0	200.6	278.1	1.668	2.077	1.070	228.8	1166	10.36	0.144	46.9	59.6	10.2
	230.0	199.1	271.4	1.831	2.129	1.045	278.9	1153	14.93	0.205	54.8	66.3	10.2
	230.0	196.9	264.4	2.030	2.222	1.015	334.9	1138	19.57	0.265	59.1	71.7	10.2
	230.0	194.0	258.4	2.233	2.349	0.995	386.6	1123	23.55	0.315	60.8	75.3	10.2
	230.0	190.5	252.1	2.448	2.504	0.973	439.7	1107	27.65	0.365	61.9	78.1	10.2
	230.0	186.5	245.8	2.673	2.683	0.950	492.3	1091	31.24	0.406	61.5	80.1	10.3
1075 RPM	230.0	182.4	239.9	2.889	2.871	0.930	540.2	1075	34.13	0.437	60.3	81.3	10.3
	230.0	181.9	239.3	2.911	2.890	0.928	545.7	1073	34.53	0.441	60.3	81.5	10.3
	230.0	177.0	232.9	3.155	3.115	0.904	598.3	1053	37.42	0.469	58.5	82.5	10.3
	230.0	171.8	226.4	3.408	3.362	0.882	651.0	1031	39.88	0.489	56.1	83.0	10.3
	230.0	166.2	220.0	3.669	3.624	0.859	703.7	1007	42.16	0.506	53.6	83.4	10.4
	230.0	160.3	213.8	3.930	3.894	0.837	754.2	983	43.72	0.512	50.6	83.4	10.4
	230.0	153.8	207.9	4.198	4.177	0.815	803.3	955	44.80	0.509	47.3	83.2	10.4
	230.0	147.7	202.2	4.461	4.458	0.794	851.4	925	45.43	0.501	43.9	83.0	10.4
BDT OZ-FT	230.0	143.0	198.5	4.649	4.658	0.780	883.9	902	45.58	0.489	41.3	82.7	10.4
	230.0	141.1	197.0	4.720	4.741	0.775	896.8	892	45.33	0.482	40.1	82.6	10.4
	230.0	134.3	192.4	4.977	5.025	0.757	938.7	857	44.96	0.459	36.5	82.0	10.4
	230.0	127.6	188.4	5.224	5.301	0.741	976.6	818	43.86	0.427	32.6	81.3	10.4
	230.0	120.8	185.0	5.458	5.564	0.728	1012.6	776	42.19	0.390	28.7	80.7	10.4
	230.0	114.2	182.4	5.681	5.817	0.717	1043.9	732	40.43	0.352	25.2	79.9	10.4
	230.0	107.5	180.3	5.892	6.058	0.708	1073.2	681	38.20	0.310	21.5	79.2	10.4
	230.0	100.7	178.8	6.086	6.283	0.702	1098.7	629	35.39	0.265	18.0	78.5	10.4
	230.0	94.2	177.9	6.262	6.490	0.697	1119.3	572	32.26	0.220	14.6	77.7	10.4
	230.0	87.8	177.4	6.422	6.680	0.692	1136.0	512	28.87	0.176	11.6	76.9	10.3
	230.0	81.0	177.8	6.562	6.850	0.686	1151.3	448	25.76	0.137	8.9	76.3	10.2
	230.0	75.1	178.9	6.663	6.978	0.690	1159.7	380	22.97	0.104	6.7	75.7	10.2
	230.0	69.1	180.6	6.753	7.091	0.694	1171.1	305	21.04	0.076	4.9	75.4	10.2
	230.0	64.1	182.6	6.825	7.186	0.704	1181.7	227	18.58	0.050	3.2	75.3	10.2
	230.0	58.4	185.0	6.884	7.270	0.714	1186.8	143	14.95	0.025	1.6	75.0	10.2

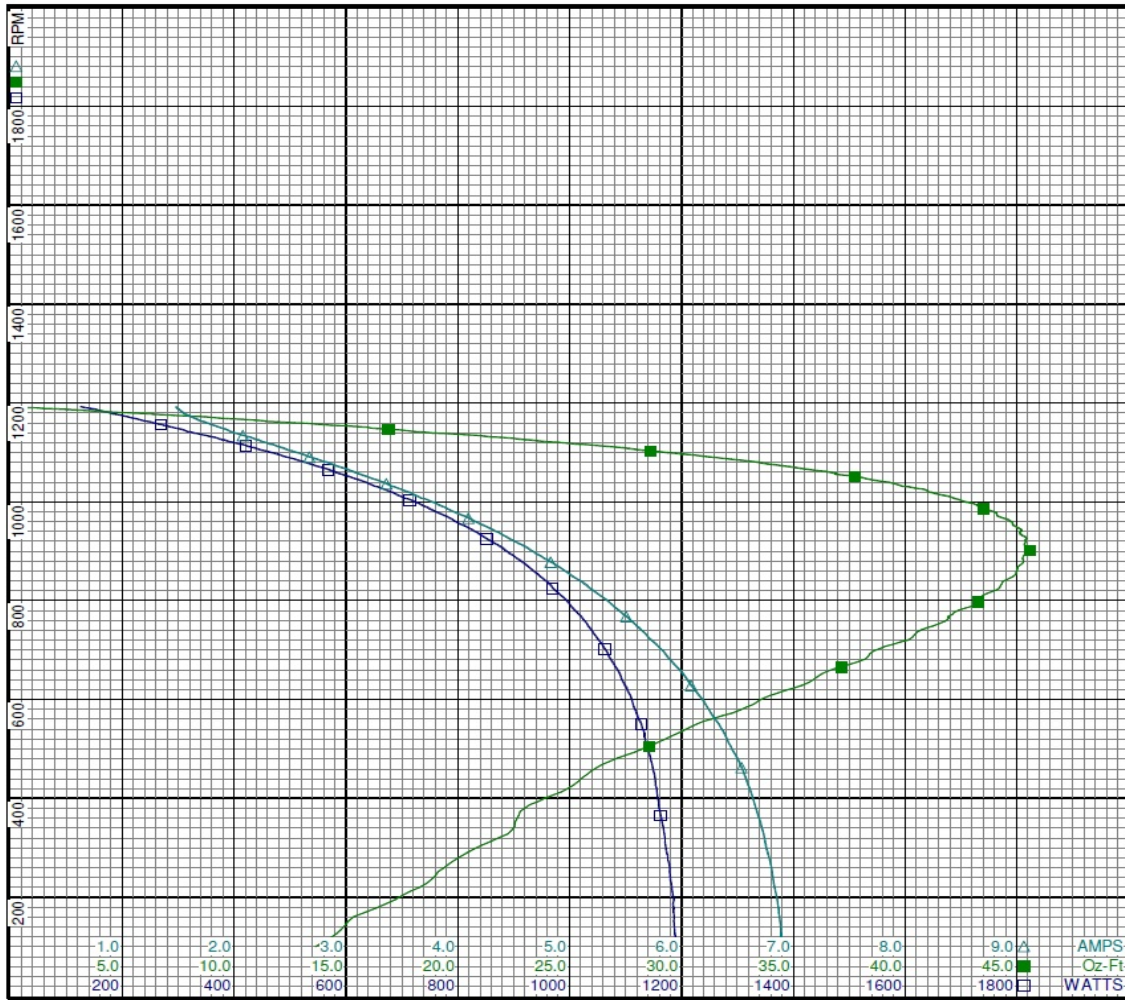
DRAWING NO. PAGE 13 of 16 REV.
3LU88BH -

©2019 W.W. Grainger, Inc. This design may not be reproduced, modified or redistributed without written permission from W.W. Grainger, Inc.

Performance Data



3LU88BH REV.
-



Curve Descriptions:
 Motor(1) Test 24 Run 230V 60 Hz 6P
 M3 (MED LO) 10ufd Run
 □ SPEED vs WATTS
 ■ SPEED vs TORQUE
 △ SPEED vs ILine

Motor Ratings:
 (1) 3LU88BH

DRAWING NO. PAGE 14 of 16 REV.
 3LU88BH -

©2019 W.W. Grainger, Inc. This design may not be reproduced, modified or redistributed without written permission from W.W. Grainger, Inc.

Performance Data



3LU88BH

REV.

-

Dayton Manufacturing Company

Motor Description

Model: 3LU88BH
 Motor ID: 1
 Poles: 6
 Volts: 208-230
 Frequency: 60
 HP: .75
 Speed: 1075/4
 Phase: 1
 Protector: 7AM036 A5

Test Conditions

Test Type: Run
 Test Number: 25
 Poles: 6
 Volts: 230
 Hz: 60
 Rotation:
 Special Cond: M4 (LO)
 Speed Conn:
 TestBoard: Amps Performance Fixture #3
 Run Cap: 10
 Start Cap: 0µfd
 Environment:
 Tested: 9/23/2002 6:05:17 PM
 Tested By: Mitchell (Mitch), L.
 Gear Ratio: 1:1
 Bearing Friction: -1.19 Oz-Ft
 Windage Torque: -1.57 Oz-Ft

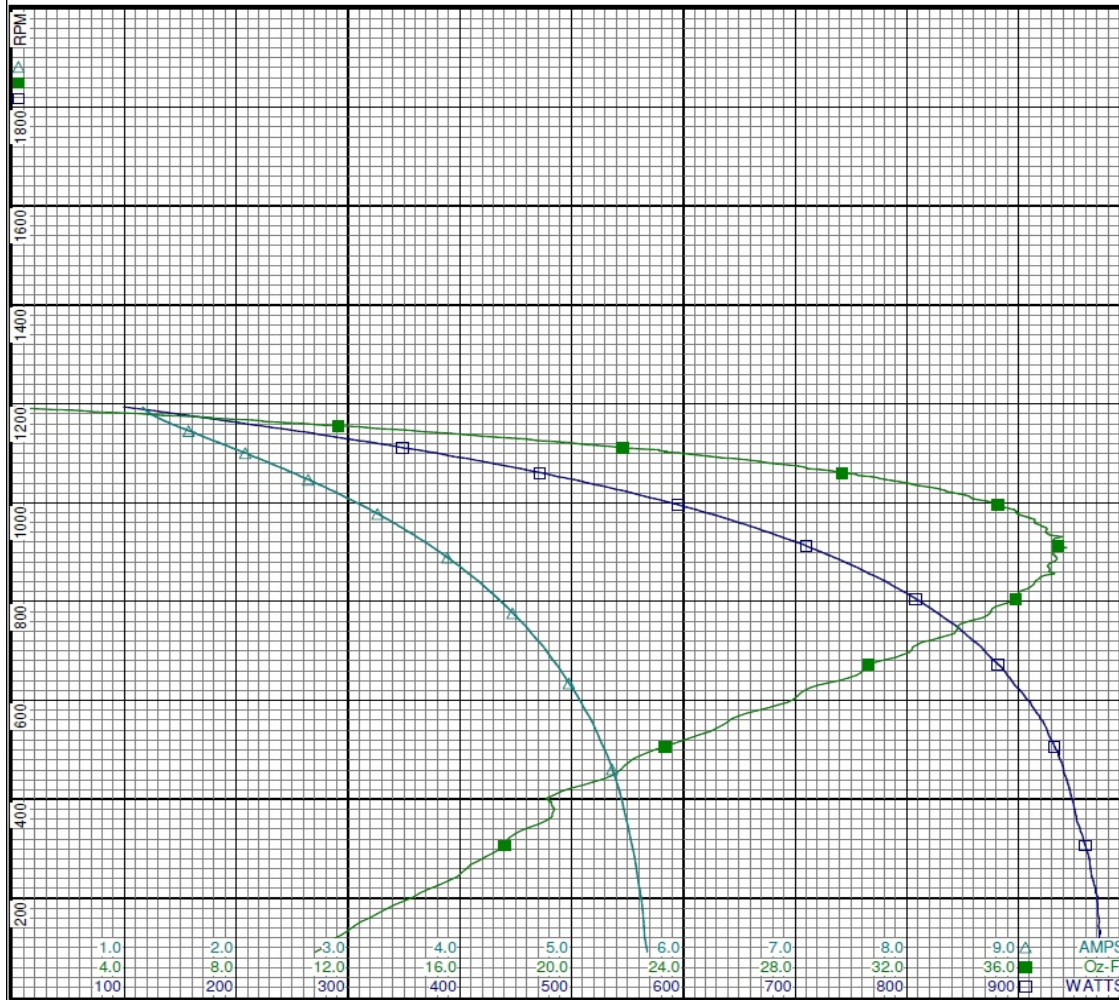
Special Points	Vline (V)	Vaux (V)	Vcap (V)	Iline (A)	Imain (A)	Iaux (A)	Watts	RPM	Tq (Oz-ft)	HP	Eff (%)	PF (%)	Cap
	230.0	191.1	268.3	1.160	1.821	1.029	99.1	1193	0.00	0.000	0.0	37.2	10.2
	230.0	189.3	261.1	1.224	1.750	1.006	143.2	1180	4.35	0.061	31.9	50.8	10.2
	230.0	188.0	253.9	1.338	1.746	0.984	185.2	1167	8.55	0.119	47.8	60.2	10.3
	230.0	187.5	247.2	1.476	1.781	0.956	226.5	1153	12.30	0.169	55.6	66.7	10.3
	230.0	186.4	241.2	1.636	1.851	0.930	268.9	1140	15.67	0.213	59.0	71.5	10.2
	230.0	184.2	234.5	1.824	1.953	0.903	317.5	1123	19.51	0.261	61.3	75.7	10.2
	230.0	181.6	229.1	1.986	2.064	0.884	356.4	1108	22.49	0.297	62.1	78.0	10.2
	230.0	178.5	223.4	2.164	2.201	0.863	397.8	1092	25.24	0.328	61.5	79.9	10.2
1075 RPM	230.0	175.1	217.8	2.346	2.354	0.843	438.7	1075	27.91	0.357	60.7	81.3	10.3
	230.0	174.8	217.4	2.359	2.365	0.841	441.5	1074	28.11	0.359	60.7	81.4	10.3
	230.0	171.0	211.6	2.558	2.544	0.821	483.3	1055	30.26	0.380	58.6	82.1	10.3
	230.0	166.8	205.6	2.767	2.743	0.800	527.1	1034	32.48	0.400	56.6	82.8	10.3
	230.0	162.3	199.8	2.978	2.953	0.780	569.4	1010	34.29	0.412	54.0	83.1	10.3
	230.0	157.5	194.1	3.197	3.177	0.759	611.3	986	35.83	0.420	51.3	83.1	10.4
	230.0	152.4	188.7	3.413	3.405	0.740	651.6	958	36.60	0.417	47.8	83.0	10.4
	230.0	147.1	183.5	3.633	3.641	0.720	691.2	928	37.29	0.412	44.4	82.7	10.4
BDT OZ-FT	230.0	143.8	180.7	3.762	3.779	0.710	713.5	909	37.71	0.408	42.6	82.5	10.4
	230.0	141.7	178.8	3.844	3.872	0.703	727.5	896	37.23	0.397	40.7	82.3	10.4
	230.0	136.1	174.6	4.056	4.106	0.688	762.9	860	37.07	0.380	37.1	81.8	10.4
	230.0	130.5	171.0	4.258	4.334	0.674	794.8	822	36.11	0.353	33.2	81.2	10.4
	230.0	124.7	167.9	4.453	4.555	0.661	824.5	781	35.00	0.325	29.4	80.5	10.4
	230.0	119.3	165.4	4.641	4.769	0.651	852.3	735	33.68	0.295	25.8	79.8	10.4
	230.0	113.3	163.6	4.815	4.971	0.643	875.1	687	31.59	0.258	22.0	79.0	10.4
	230.0	107.7	162.3	4.976	5.165	0.637	895.2	635	29.13	0.220	18.3	78.2	10.4
	230.0	102.2	161.4	5.124	5.340	0.633	914.8	579	26.62	0.184	15.0	77.6	10.4
	230.0	96.7	161.1	5.256	5.499	0.629	929.5	518	23.96	0.148	11.9	76.9	10.4
	230.0	91.0	161.6	5.373	5.641	0.625	940.4	454	21.61	0.117	9.3	76.1	10.3
	230.0	86.1	162.2	5.459	5.750	0.626	949.4	387	19.30	0.089	7.0	75.6	10.2
	230.0	80.9	164.3	5.532	5.845	0.632	958.3	314	17.69	0.066	5.1	75.3	10.2
	230.0	76.4	166.0	5.595	5.929	0.640	966.7	235	15.60	0.044	3.4	75.1	10.2
	230.0	72.2	167.5	5.644	5.997	0.650	972.1	152	12.44	0.023	1.7	74.9	10.3

DRAWING NO. PAGE 15 of 16 REV.
3LU88BH -

Performance Data



3LU88BH REV. -

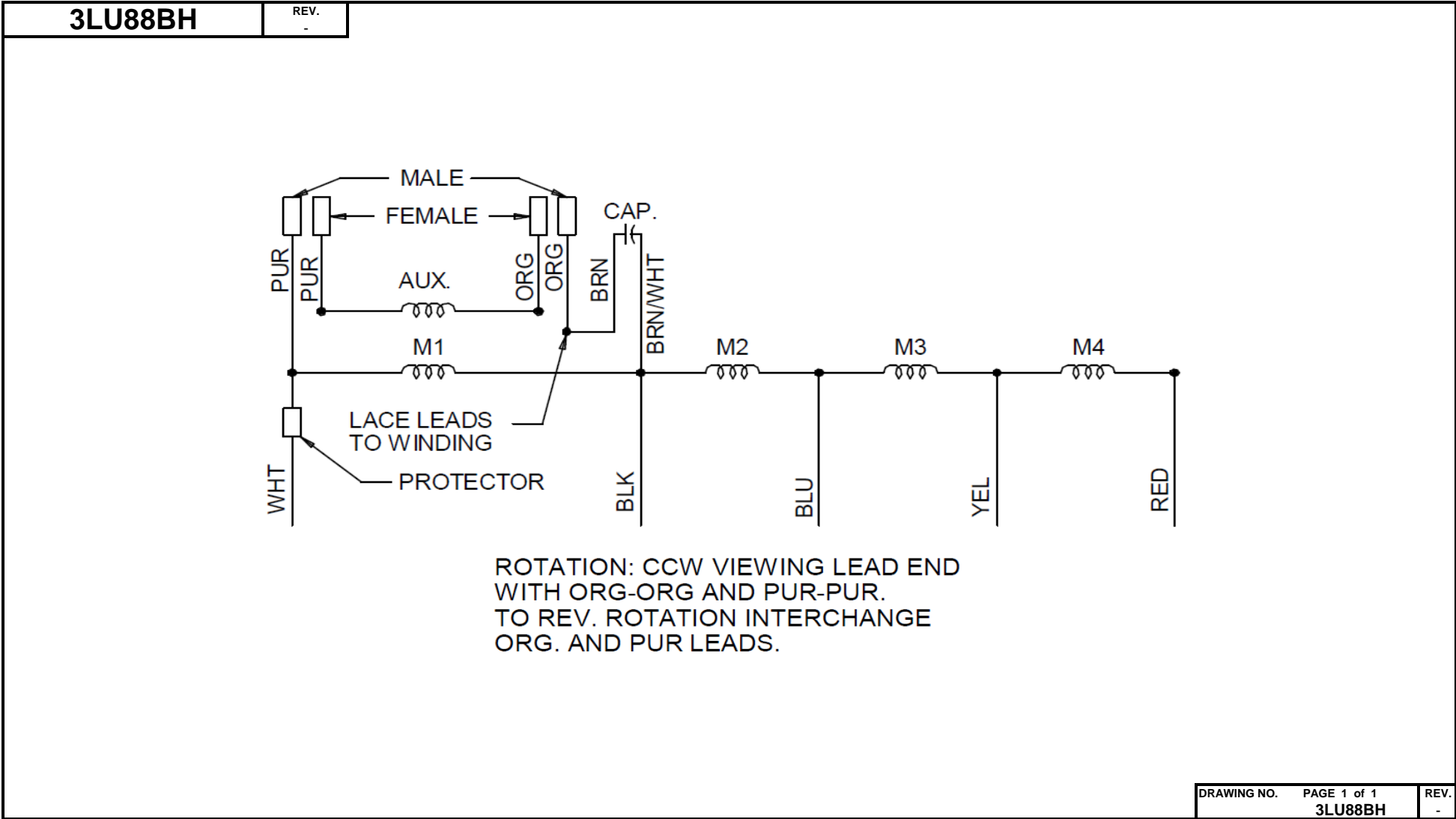


Curve Descriptions:
 Motor(1) Test 25 Run 230V 60 Hz 6P
 M4 (LO) 10ufd Run
 □ SPEED vs WATTS
 ■ SPEED vs TORQUE
 △ SPEED vs ILine

Motor Ratings:
 (1) 3LU88BH

DRAWING NO. PAGE 16 of 16 REV.
 3LU88BH -

Wiring Diagram



Dayton Electric Mfg. Co. Lake Forest, IL 60045 USA

©2019 W.W. Grainger, Inc. This design may not be reproduced, modified or redistributed without written permission from W.W. Grainger, Inc.

Dayton®

DIRECT DRIVE BLOWER MOTOR

HP: 3/4
VOLTS: 208-230
AMPS: 6.1-5.8
RPM: 1075 / 4SPD
DUTY: CONT
SF: 1.0
KVA CODE:
ENCL: OAO
THERMALLY PROTECTED: AUTO

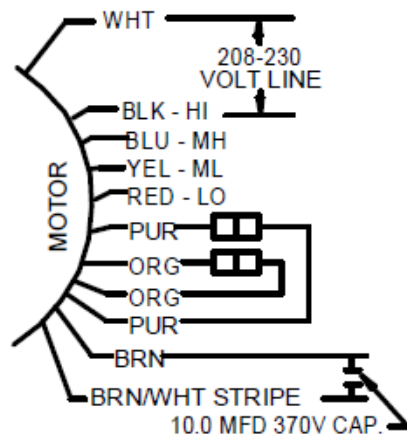
MFG. NO. [] [] **PROT. CODE:** 2A100 **AVG.F.L**
MTR REF: K55BWKDK-2366 **EFF.**

BAR CODE

Part
No 3LU88BH

**Disconnect Power Before Making Any
Electrical Connections or Changes**

TO REVERSE ROTATION
INTERCHANGE ORG
AND PUR LEADS



RU[®]
E37403

SA[®]
258501

Mfd for Dayton Electric Mfg. Co., Lake Forest, IL 60045 USA

Made in China