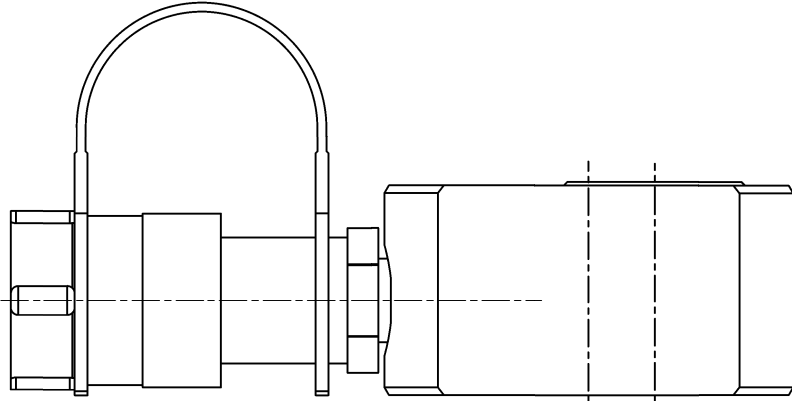
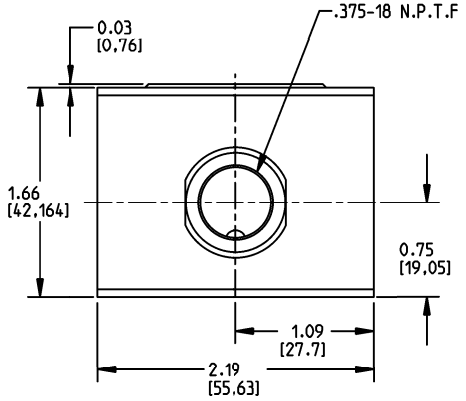
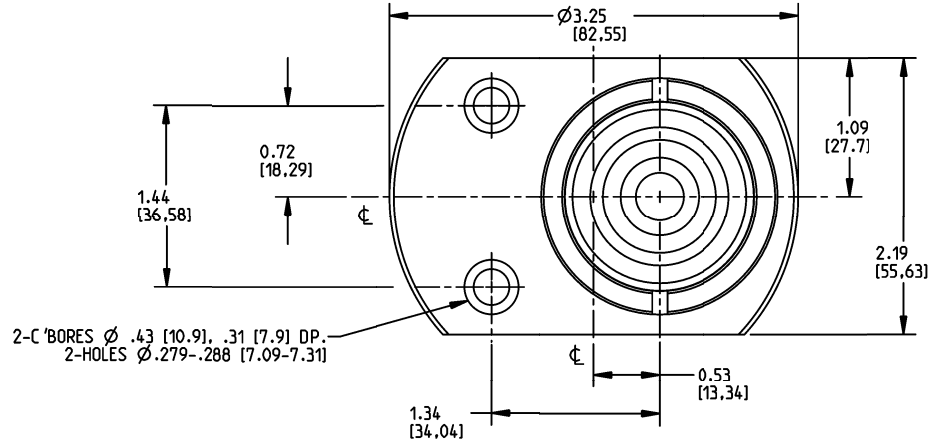


REVISION HISTORY		
REV	ECN #	DATE/INITIAL
B	ECN0025391	12FEB15/HVJ



CYLINDER SPECIFICATIONS				
MAX FORCE (ADV)	10	TON*	9.072	TONNE*
MAX FORCE (RET)	-	TON*	-	TONNE*
STROKE	.44	IN	11.2	mm
EFFECTIVE AREA (ADV)	2.236	IN <sup>2</sup>	14.43	cm <sup>2</sup>
EFFECTIVE AREA (RET)	-	IN <sup>2</sup>	-	cm <sup>2</sup>
OIL CAPACITY (ADV)	1.54	IN <sup>3</sup>	25.24	cm <sup>3</sup>
OIL CAPACITY (RET)	-	IN <sup>3</sup>	-	cm <sup>3</sup>
COLLAPSED HEIGHT	1.69	IN	42.9	mm
EXTENDED HEIGHT	2.12	IN	53.8	mm
BORE DIAMETER	1.69	IN	42.9	mm
PLUNGER DIAMETER	1.50	IN	38.1	mm
WEIGHT	3.5	LBS	1.6	Kg
MAX PRESSURE	8944	PSI	616.8	BAR
MAJORITY MATERIAL	-			
*TON =	SHORT TON			
*TONNE =	METRIC TON			
ALL DIMENSIONS ARE REFERENCE ONLY				

<b>THIRD ANGLE PROJECTION</b> 	UNLESS OTHERWISE SPECIFIED DIMENSIONS ARE IN INCHES TOLERANCES ARE: ENGLISH METRIC .XX ± .01 X.X ± 0.25mm .XXX ± .005 X.XX ± 0.1mm ANGLES ± 1° DO NOT SCALE DRAWING	UNLESS OTHERWISE SPECIFIED ALL UNDIMENSIONED DIMENSIONS ARE BASIC. ASME Y14.5-1994 DATE 06OCT14	<b>ENERPAC</b>		
			DRAWN BY: HVJ CHECKER: MW ENGR:	APPROVALS DATE 12FEB15	TITLE ID SPEC FOR 10T CYL RSM100
MATERIAL: - FINISH: - TREATMENT: -	THIS PRINT AND INFORMATION HEREIN IS CONFIDENTIAL AND PROPRIETARY AND IS THE PROPERTY OF ENERPAC. IT IS NOT TO BE COPIED OR REPRODUCED WITHOUT WRITTEN PERMISSION.		SCALE 1:1	DWG FORMAT Pro/E	SHEET 1 of 1