

Hubbellock® Devices
 20A, 125V, 2 Pole, 3 Wire Grounding
 Hubbellock® Receptacle

HUBBELL

Features

- Spring loaded safety shutter contains arcing when mating or un-mating devices under load
- Spring loaded safety shutter automatically ejects the plug eliminating contact teasing
- Box terminals in conjunction with screws with pressure pads provide maximum termination strength and dependability
- Thermoset molded housing provides maximum heat resistance

Ordering Information

Description	Device Color	UPC	Catalog Number
Black phenolic, back wired	Black	783585015712	HBL23000HG



Specifications

Housing / Shutter	Phenolic
Contacts	Bronze
Terminal Clamp	Brass
Terminal Screws	Brass
End Plates	Zinc plated steel
Spring	Steel

Performance

Electrical

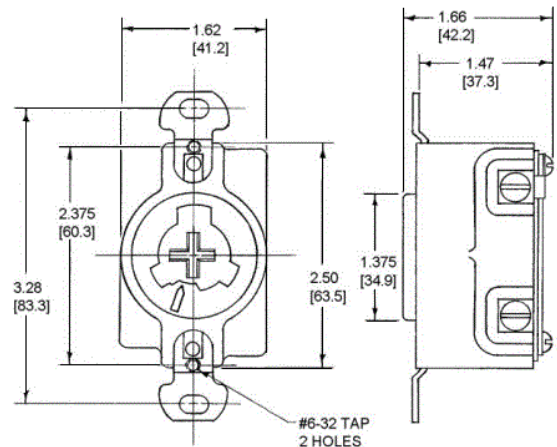
Current Interrupting	Certified for current interrupting at full rated current
Dielectric Voltage	Withstands 2,000V minimum

Mechanical

Terminal Accommodation	#14 AWG - #10 AWG solid or stranded copper wire only.
Terminal Identification	Terminals identified in accordance with UL 498

Environmental

Flammability	UL 94 V0
Moisture Resistance	IP30 Suitability
Operating Temperatures	Maximum Continuous 75°C; Minimum -40°C (w/o impact)



Accessories

Plug	HBL23005GB
Wallplate or Weatherproof Cover	1.40" Opening

Resources

Customer Use Drawing
 eCatalog

Dimensions in Inches (mm)

Hubbell Wiring Device-Kellems • Hubbell Incorporated (Delaware) • 40 Waterview Drive • Shelton, CT 06484

Phone (800) 288-6000 • Fax (800) 255-1031 • Specifications subject to change without notice.

