



BOWMAN WARNING: DO NOT INSTALL ON  
 SURFACES THAT ARE NOT  
 DESIGNED FOR THIS PURPOSE  
 AT THIS LOAD TIME  
 TUBERAIL HANGER SYSTEM DISPENSER & LOAD PRODUCT  
 © 2015 Bowman Manufacturing Company, Inc. All rights reserved. MB510TDS



### Product Description:

- Hanger - Wall
- Holds BOWMAN® Protection Systems
- Screw holes for wall mounting
- Made of quartz beige powder-coated steel

### Primary Area for Product Usage:

- Anywhere a wall hanger is needed to mount a dispenser for personal protection equipment

### Accessories:

- |              |              |              |
|--------------|--------------|--------------|
| • FM002-0213 | • LP-004     | • PS016-0111 |
| • GN001-0212 | • PS012-0512 | • PS016-0212 |
| • LD-007     | • PS014-0212 | • PS016-0223 |
| • LD-037     | • PS014-0512 | • PS016-0233 |
| • LD-064     | • PS015-0212 | • PS016-0300 |
| • LD-070     | • PS015-0512 | • PS016-0512 |

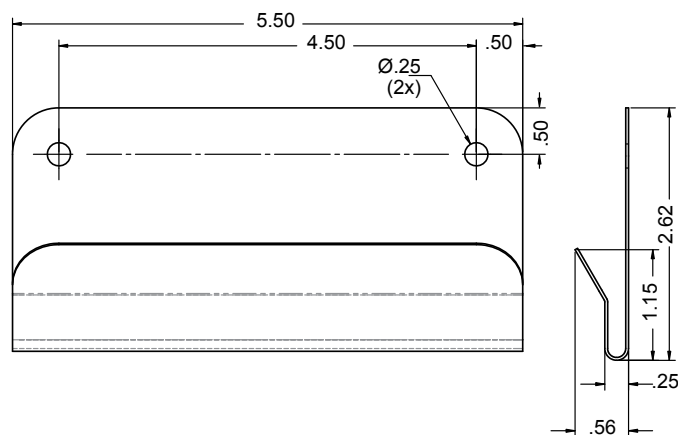
### Package Specifications:

- Package Quantity: 12 per case
- 10"L x 6"W x 4"H (25.4 cm x 15.2 cm x 10.2 cm)
- 4.0 lbs (1.8 kg) - approximated

### Product Specifications (overall external dimensions):

- 5.50"W x 2.62"H x 0.56"D (14.0 cm x 6.7 cm x 1.4 cm)
- 0.20 lbs (0.1 kg) - approximated

### Mounting Specifications:



### Proper Hanging Procedure:

- 1) Attach hanger securely - back of hanger must lay flush against surface.
- 2) Hang protection system on hanger.
- 3) Load product.
- 4) To remove, reverse order of steps.



## Advantage

### Designed for Long-Term Use

Dispensers and stands made of powder coated steel are both attractive and functional, providing years of service.

## Major Benefits

### *Durable*

Our powder coated steel dispensers and stands provide long-lasting products that hold up well in tough environments.

### *Cleaning*

The powder coated finish resists common chemicals and cleaning agents and can be easily wiped clean with soap and water.

### *Strength*

Powder coated steel is ideal for dispensers used in a healthcare or an industrial setting. It is impact resistant and is not effected by extremes in temperature.

### *Appearance*

The clean, bright appearance of quartz powder coated steel looks attractive and provides a professional image in all environments.

