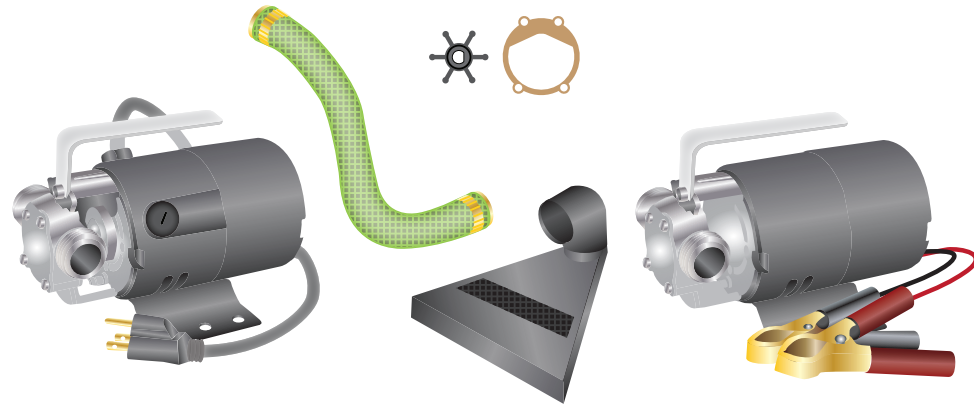


# GARDEN HOSE UTILITY PUMP



115V Model

12V Model

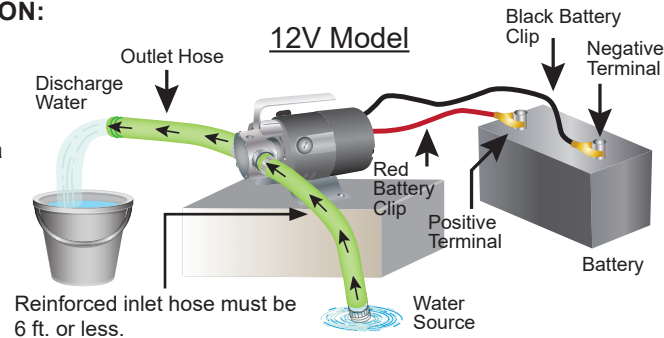
Description	Quantity
Pump 115V or 12V	1
Reinforced Inlet Hose	1
Puddle Vac	1
Impeller/Gasket	1

**QUICK REFERENCE GUIDE. SEE INSTRUCTION MANUAL FOR COMPLETE DETAILS.**

## 4 TURNING PUMP ON:

**12V Model:** Attach red battery clip to positive terminal and black battery clip to negative terminal of a fully charged battery.

**115V Model:** Turn on pump by plugging the cord into a 115 volt, 60 Hz grounded A/C outlet protected by a ground-fault circuit-interruptor (GFCI). If the outlet hose is restricted or raised, pump will deliver less water.

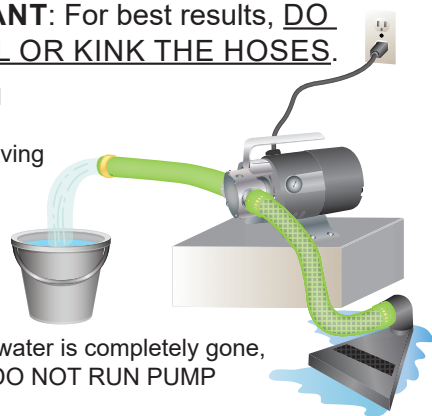


If pump does not start to pump water within 30 seconds, stop pump and repeat step 3. **CAUTION:** Be sure inlet hose is reinforced. Do not use any hoses that expand and contract.

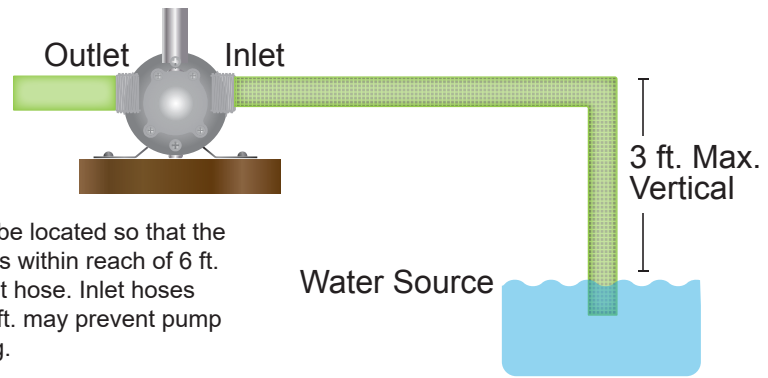
## 5 OPERATING INSTRUCTIONS: IMPORTANT: For best results, DO NOT COIL OR KINK THE HOSES.

This unit is shipped with a Puddle Vac accessory for removing water from flat surfaces.

**CAUTION:** Before water is completely gone, unplug the pump. **DO NOT RUN PUMP DRY!**

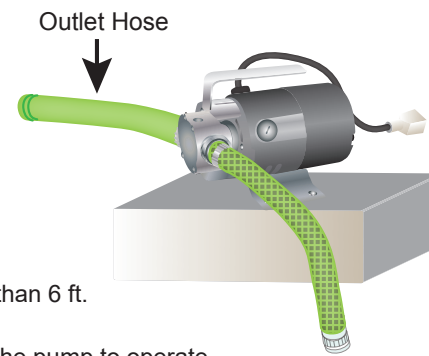


## 1 PUMP LOCATION:



Pump should be located so that the water source is within reach of 6 ft. reinforced inlet hose. Inlet hoses longer than 6 ft. may prevent pump from operating.

## 2 ATTACHING HOSES:



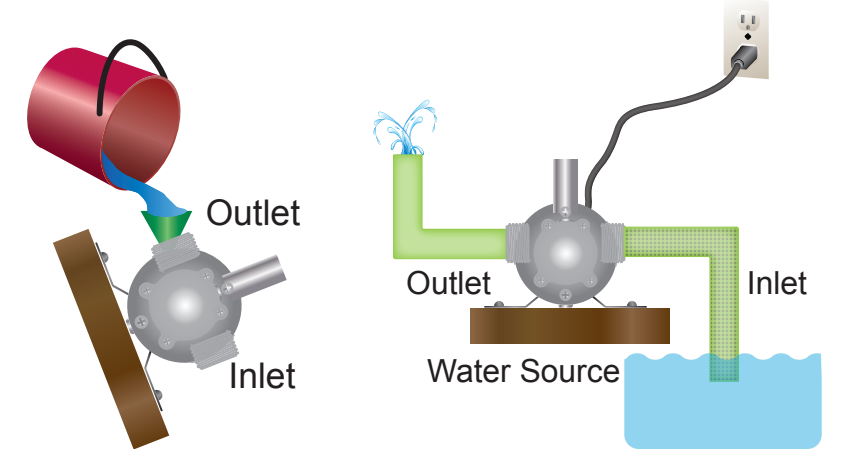
Install reinforced inlet hose on the inlet side of pump.

### CAUTION:

Inlet hose **MUST** be reinforced and no longer than 6 ft. Outlet hose must be no longer than 25 ft. Hoses that expand and contract will not allow the pump to operate.

## 3 PRIMING INSTRUCTIONS:

**IMPORTANT:** Pump **MUST** be primed before it is turned on.



To prime pump, tilt pump up to fill the pump cavity to wet the impeller. Install a 5/8 in. outlet hose (not included) on the outlet side of pump. Inlet hose must reach below the surface of the water and the outlet hose must be kept above water.

**NOTE:** Outlet hose should be as short as possible and no longer than 25 ft.

## 6 MAINTENANCE AND REPAIR

### HOW TO REPLACE BRUSHES

**NOTE:** Motor brushes (not included) are normal wear items and must be replaced periodically.

- Be sure pump is disconnected from power source.
- Unscrew brush cap located along the side of the motor. Remove brush and

spring and spring cover by pulling them straight out of the brush holder.

- Install new brush and spring assembly (not included), keeping the new brush curvature aligned the same as the previous brush.
- Replace cap.

### HOW TO REPLACE IMPELLER

**NOTE:** Replace the impeller when it has been worn or damaged by foreign objects, improper liquid or running dry.

- Remove four face plate screws, face plate and gasket.
- Remove damaged or worn impeller.
- Clean the inside of the pump cavity and remove any foreign materials that might prevent the impeller from moving easily.

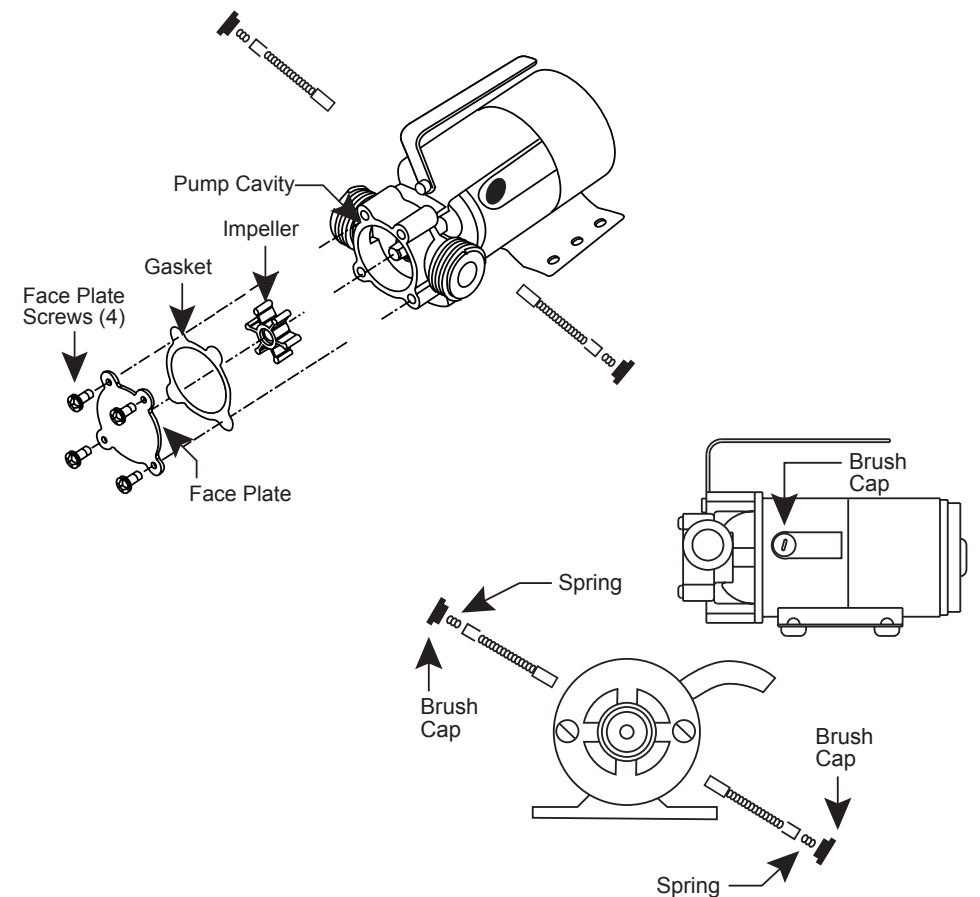
- Apply petroleum jelly (not included) to the inside of the pump cavity and the outside of the new impeller.

- Align the flat on the new impeller with the flat on the motor shaft. Push into place while twisting blades in a clockwise direction.
- Place new gasket on pump cavity face, align holes and replace cover. Tighten all four screws evenly and snugly.

### MAINTENANCE

Always drain pump when not in use. If pump is going to be out of use for a month or longer, flush with fresh water and remove face plate cover. Remove impeller, clean inside pump cavity and apply a generous coating of petroleum jelly (not included) to the inside of the

cavity and the impeller before replacing the impeller. The pump should be checked frequently for proper operation. If anything has changed since the pump was new, it should be repaired or replaced.



## 7 SAFETY INFORMATION



### DANGER

#### ELECTRICAL SHOCK HAZARD.

This pump is non-submersible. Keep the motor dry at all times. Do not wash the motor. Do not immerse. Protect the motor from wet weather. Do not allow any part of cord or receptacle ends to sit in water or in damp locations. Failure to follow these warnings will result in death or serious injury and/or property damage.

#### FIRE/EXPLOSION HAZARD.

Pump only clear water. Do not pump flammable or explosive fluids such as gasoline, fuel oil, kerosene, etc. Do not use in a flammable and/or explosive atmosphere. Failure to follow these warnings could result in death or serious injury and/or property damage.

#### RISK OF ELECTRIC SHOCK.

These pumps have not been investigated for use in swimming pool areas.



### WARNING

#### ELECTRICAL SHOCK ALERT.

Before installing this product, have the electrical circuit checked by an electrician to ensure proper grounding.

All wiring should be performed by a qualified electrician.

Connect to a properly-grounded 115 volt circuit equipped with a Ground fault Circuit Interrupter (GFCI) device.

Do not handle pump or pump motor with wet hands or when standing on a wet or damp surface or in water.

Protect pump from extreme heat, cold and humidity. This unit is not waterproof and is not intended to be used in showers, saunas, or other potentially wet locations. The motor is designed to be used in a clean, dry location with access to an adequate supply of cooling air. Ambient temperature around the motor should not exceed 104°F (40°C). For outdoor installations, motor must be protected by a cover that does not block airflow to and around the motor. This unit is not weatherproof, nor is it able to be submersed in water or any other liquid. Do not use in or near swimming pool or spa.

BE CERTAIN the pump power source is disconnected before installing or servicing pump.

In any installations where property damage and/or personal injury might result from an inoperative or leaking pump due to power outages, discharge line blockage, or any other reason, a backup system(s) should be used. In order to safely use this product, familiarize yourself with this pump.

Protect electrical cord from sharp objects, hot surfaces, oil and chemicals. Avoid kinking the cord. Replace or repair damaged or worn cords immediately.

#### PERSONAL INJURY ALERT.

Pump is equipped with an automatic resetting thermal protector and may restart unexpectedly. Refer to troubleshooting.

**PROP65 WARNING FOR CALIFORNIA RESIDENTS:**  
Cancer and Reproductive Harm – www.P65Warnings.ca.gov.



### CAUTION

#### PERSONAL INJURY OR PRODUCT DAMAGE MAY RESULT

Pump operates on 115 volts. Make certain that the power source conforms to the requirements of your equipment.

#### PRODUCT DAMAGE MAY RESULT

This pump is not designed to handle salt water, brine, laundry discharge or any other liquid that may contain caustic chemicals and/or foreign materials.

The maximum temperature of the pumped liquid must not exceed 130°F (54°C). The minimum allowable temperature is 40°F (4°C).

Be sure the water source and piping are clear of sand, dirt and scale. Debris will clog the pump and void the warranty.

Failure to protect the pump and piping from freezing will cause damage and void the warranty.

Do not run pump dry. Impeller and seal damage will result.

#### PERSONAL INJURY MAY RESULT

Release all pressure within the system before servicing any component. Provide a means of pressure relief for installations where the discharge line can be shut off or obstructed.

Do not touch motor while operating pump. Motor is designed to operate at high temperatures.

#### PROPERTY DAMAGE MAY RESULT

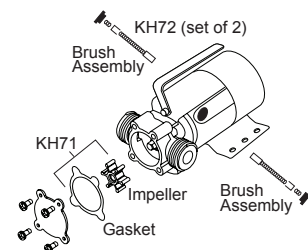
Drain all liquids from the system before servicing.

#### PERSONAL INJURY AND/OR PROPERTY DAMAGE MAY RESULT

Secure the discharge line before starting the pump. An unsecured discharge line will whip, possibly causing personal injury and/or property damage.

## 9 REPAIR PARTS

Part #	Description
023740	Gasket & impeller kit
024794	Brush kit
023754	Pump Head Kit (Includes face plate, seal, impeller and pump head)



## 8 TROUBLESHOOTING

Problem	Possible Cause	Corrective Action
Pump will not prime or retain prime after operating.	<ol style="list-style-type: none"> <li>1. Pump won't prime.</li> <li>2. Suction lift too high.</li> <li>3. Hose kinked.</li> <li>4. Hose fitting not tight on inlet.</li> <li>5. Air leak in suction hose.</li> </ol>	<ol style="list-style-type: none"> <li>1. See priming instructions on page 6.</li> <li>2. Move pump closer to water source.</li> <li>3. Straighten hose.</li> <li>4. Tighten fitting.</li> <li>5. Repair or replace hose.</li> </ol>
Pump runs but no water is discharged.	<ol style="list-style-type: none"> <li>1. Hose kinked.</li> <li>2. Pump is not primed.</li> <li>3. Defective impeller.</li> <li>4. Suction lift too high.</li> <li>5. Discharge height too great.</li> <li>6. Clogged inlet.</li> </ol>	<ol style="list-style-type: none"> <li>1. Straighten hose.</li> <li>2. See priming instructions on page 6.</li> <li>3. Replace impeller.</li> <li>4. Move pump closer to water source.</li> <li>5. Reduce discharge height.</li> <li>6. Clean inlet.</li> </ol>
Motor runs too hot.	<ol style="list-style-type: none"> <li>1. Voltage incorrect.</li> <li>2. Restricted discharge hose.</li> <li>3. Impeller damaged.</li> <li>4. Liquid too viscous.</li> <li>5. Plugged or kinked discharge.</li> <li>6. Insufficient air flow on motor.</li> </ol>	<ol style="list-style-type: none"> <li>1. Connect to 115 volt outlet for AC and 12V battery for DC.</li> <li>2. Increase hose diameter to 3/4 in.</li> <li>3. Replace impeller.</li> <li>4. Reduce viscosity of liquid.</li> <li>5. Clean and straighten hose.</li> <li>6. Make sure ample fresh air is available at the motor.</li> </ol>
Flow rate is low.	<ol style="list-style-type: none"> <li>1. Hose kinked.</li> <li>2. Clogged impeller.</li> <li>3. Worn impeller.</li> <li>4. Excessive length of hose.</li> </ol>	<ol style="list-style-type: none"> <li>1. Straighten hose.</li> <li>2. Clear obstruction.</li> <li>3. Replace impeller.</li> <li>4. Reduce length of inlet and outlet hose.</li> </ol>
Pump will not run.	<ol style="list-style-type: none"> <li>1. No power.</li> <li>2. Impeller jammed.</li> <li>3. Motor overheated.</li> </ol>	<ol style="list-style-type: none"> <li>1. Verify that unit is plugged into 115 volt outlet for AC or attached to a 12V battery for DC.</li> <li>2. Clean pump cavity and impeller.</li> <li>3. Motor has automatic thermal protector. Wait fifteen minutes for motor to cool.</li> </ol>

## 10 WARRANTY

This product is warranted for one year from the date of purchase. Subject to the conditions hereinafter set forth, the manufacturer will repair or replace to the original consumer, any portion of the product which proves defective due to defective materials or workmanship. This warranty does not cover replacement parts for failure due to normal wear and tear. To obtain warranty service, contact the dealer from whom the product was purchased. The manufacturer retains the sole right and option to determine whether to repair or replace defective equipment, parts or components. Damage due to conditions beyond the control of the manufacturer is not covered by this warranty.

THIS WARRANTY WILL NOT APPLY: (a) To defects or malfunctions resulting from failure to properly install, operate or maintain the unit in accordance with printed instructions provided; (b) to failures resulting from abuse, accident or negligence or use of inappropriate chemicals or additives in the water; (c) to normal maintenance services and the parts used in connection with such service; (d) to units which are not installed in accordance with normal applicable local codes, ordinances and good trade practices; and (e) if the unit is used for purposes other than for what it was designed and manufactured.

#### RETURN OF WARRANTED COMPONENTS:

Any item to be repaired or replaced under this warranty must be returned to the manufacturer at Kendallville, Indiana or such other place as the manufacturer may designate, freight prepaid.

THE WARRANTY PROVIDED HEREIN IS IN LIEU OF ALL OTHER EXPRESS WARRANTIES, AND MAY NOT BE EXTENDED OR MODIFIED BY ANYONE. ANY IMPLIED WARRANTIES SHALL BE LIMITED TO THE PERIOD OF THE LIMITED WARRANTY AND THEREAFTER ALL SUCH IMPLIED WARRANTIES ARE DISCLAIMED AND EXCLUDED. THE MANUFACTURER SHALL NOT, UNDER ANY CIRCUMSTANCES, BE LIABLE FOR INCIDENTAL, CONSEQUENTIAL OR SPECIAL DAMAGES, SUCH AS, BUT NOT LIMITED TO DAMAGE TO, OR LOSS OF, OTHER PROPERTY OR EQUIPMENT, LOSS OF PROFITS, INCONVENIENCE, OR OTHER INCIDENTAL OR CONSEQUENTIAL DAMAGES OF ANY TYPE OR NATURE. THE LIABILITY OF THE MANUFACTURER SHALL NOT EXCEED THE PRICE OF THE PRODUCT UPON WHICH SUCH LIABILITY IS BASED.

This warranty gives you specific legal rights, and you may have other rights which vary from state to state. Some states do not allow limitations on duration of implied warranties or exclusion of incidental or consequential damages, so the above limitations may not apply to you.

**In those instances where damages are incurred as a result of an alleged pump failure, the Homeowner must retain possession of the pump for investigation purposes.**